



DELAWARE VALLEY
REGIONAL PLANNING
COMMISSION

DOTs & DASHes!

piecing together transit's future

*Funded through the Federal Transit Administration
Public Transportation Participation (PTP) Pilot Program*



Welcome to Dots & Dashes!



Why are you here?

This is your opportunity to express preferences and priorities for public transit capital improvements through the year 2030.

Purpose:

- Meaningful discussion on transit and planning topics
- Inform priorities for DVRPC's next Long Range Plan
- Ideas for a new Regional Vision Plan project



Step One



1. Introduce yourselves
2. Select a team leader
3. Select a team name
4. Complete the Group Survey Sheet

DOTS & DASHES – Group Survey

Date: _____ Team Name: _____

Zip code of residence _____ (required)
Name _____ (optional)

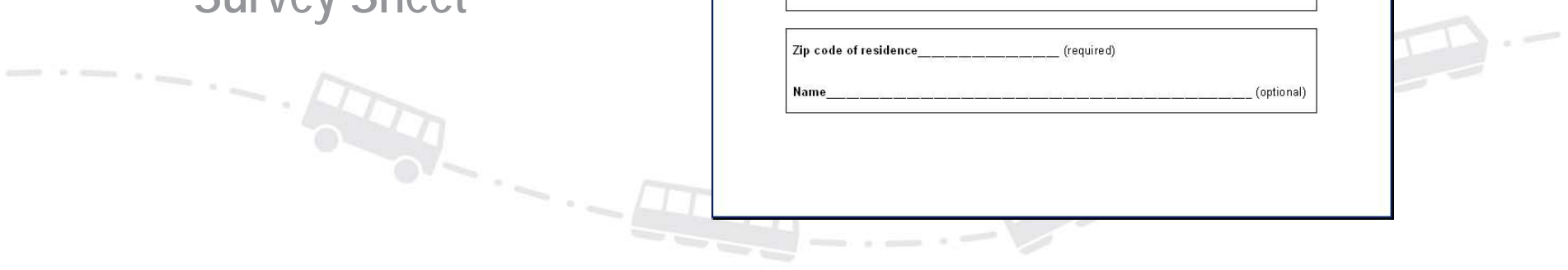
Zip code of residence _____ (required)
Name _____ (optional)

Zip code of residence _____ (required)
Name _____ (optional)

Zip code of residence _____ (required)
Name _____ (optional)

Zip code of residence _____ (required)
Name _____ (optional)

Zip code of residence _____ (required)
Name _____ (optional)



Guides for the Game

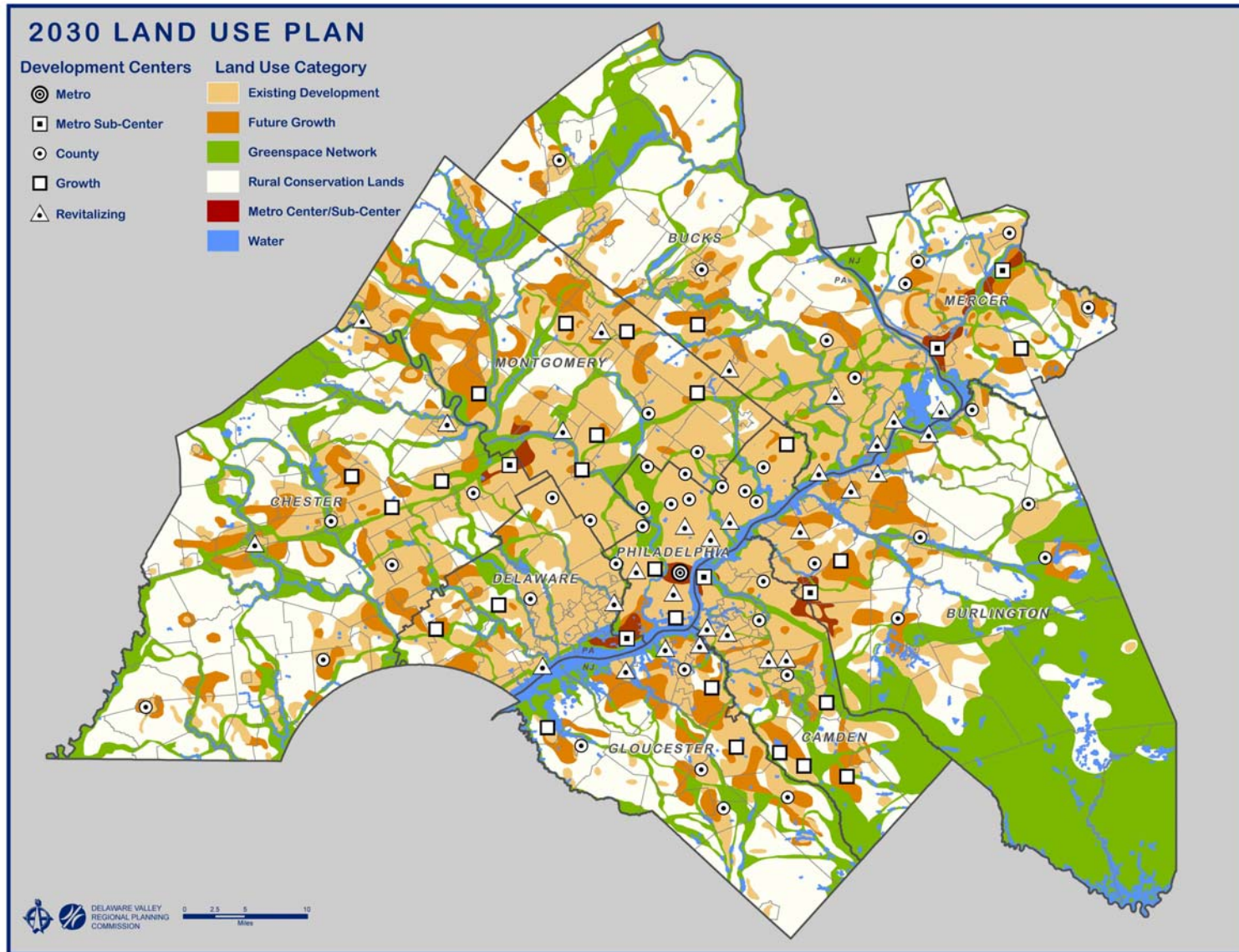


Central tenets of DVRPC's Destination 2030 Long Range Plan and its goals for regional growth & development.

- Link transportation investments to land use and economic development
- “Fix it First” policy – maintenance / repair / reinvestment before system expansion
- Focus growth in already-developed areas



Destination 2030 Land Use Plan



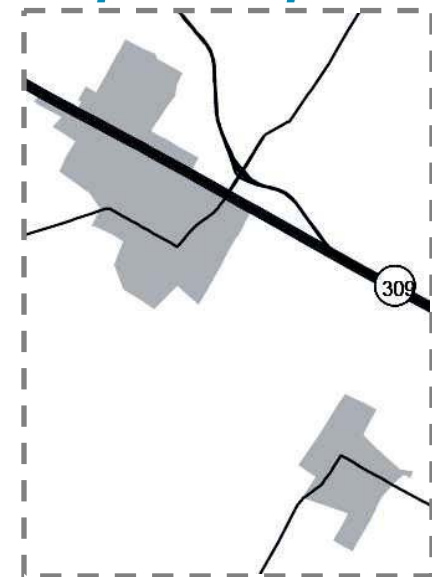
DVRPC Transit Score



DVRPC's transit score links developed places with transit potential

- Transit works best where population and jobs are concentrated - the Transit Score identifies locations by their levels of these concentrations.
- The gray shaded areas on your Dots & Dashes game board are the top transit score locations in the region.

Map Example:



Step Two



Game introduction:

- The goal is for each group to reach consensus on how to spend their Dots & Dashes Dollars on transit projects.
- Play begins with a \$5 billion budget in Dots & Dashes Dollars, to be used on system improvements beyond basic maintenance/upkeep.
- The costs in this game are based on real costs of transit projects (adjusted to 2030 dollars), though real world costs and funding are always changing. Please view costs and funding in the context of the game (as a 'Dots & Dashes reality').



Step Three



Complete the Group Decision Sheet:

● Decide as a group how much of your \$5 Billion budget to spend on:

System Improvements

versus

System Expansion

● The amount you direct to system expansion is your group's Dots & Dashes System Expansion Budget

DOTS & DASHES – Group Decision Sheet

Date: _____ Team Name: _____

Dots & Dashes Dollars budget to spend between now and 2030: **\$5.0 Billion**

1. Decide as a group how much of your budget, if any, you would like to spend on System Improvements (i.e. improvements to the existing transit system). If you choose to invest money in System Improvements, you need *at least a billion dollars to make a noticeable difference over 20+ years*. Examples include:

- Modern fare systems, including 'smart cards'
- Faster or more frequent train and/or bus service
- Fares that can be used on SEPTA, PATCO, and NJ TRANSIT
- Real-time information and better signage (e.g. "next bus/train in X minutes") throughout the system
- Trains and/or buses with more amenities

System Improvements Budget: \$ _____

2. If your group has chosen to allocate money to System Improvements (Step 1), please list up to three (3) priorities for improvements you'd like to see this money spent on:

- _____
- _____
- _____

3. The remaining money after System Improvements (Step 1) are subtracted from the initial \$5 Billion is available for System Expansion. This is the Dots & Dashes budget to be spent over 20+ years on transit system expansion projects such as:

- New rail lines and/or 'rapid bus' routes
- New transportation centers
- New stations and/or parking garages

This is your Dots & Dashes System Expansion Budget: \$ _____

Please carry over this dollar amount to the Game Log on the next page.

Step Four: Intro to Dots & Dashes Game Pieces



Small dots:

\$25m

- Stations
- Parking garages
- Station parking lots

Big dots:

\$100m

- Major stations with structured parking
- Transportation Centers (i.e. Norristown, Paoli)
- Transit Oriented Developments (TOD)



Step Four: Intro to Dots & Dashes Game Pieces



Rapid bus dashes:

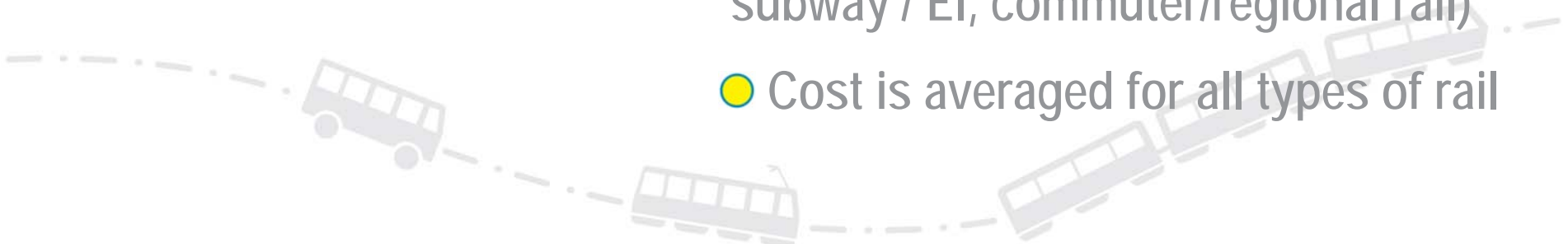
rapid bus - \$10 m

- 3" = \$10 Million, 1" = \$3.3 Million
- In street BRT projects OR
- Express bus lines with stations

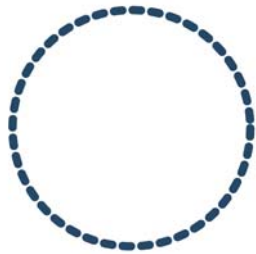
Rail dashes:

rail - \$500 m

- 3" = \$500 Million, 1" = \$170 Million
- Used for all types of rail (light rail, subway / EI, commuter/regional rail)
- Cost is averaged for all types of rail



Step Four: Game Piece Notes



- Within 4 miles of Philadelphia City Hall, dot and dash costs should be doubled to reflect higher land, labor, and other costs

● All costs are in 2030 dollars

● Station and vehicle costs are included in rail and bus dashes



Step Five: Game Instructions



1. Go around the board twice nominating projects and adding them to your Game Log
2. Estimate project costs by sketching them out and measuring
3. Once your group agrees on a set of projects, make your selections permanent with your Dots & Dashes stickers

DOTS & DASHES – Game Instructions

1. Complete the Group Survey Sheet
2. Choose a leader and complete the Group Decision Sheet to determine how much to spend on System Improvement versus System Expansion.
3. Starting with your System Expansion budget and moving clockwise, each player nominates a transit project to be added to the Game Log.
 - a. Players nominate their own idea or a project from the Destination 2030 project list.
 - b. Players may skip their turn if they wish (or agree with an already-nominated project), but each group should go around the board twice nominating projects.
4. Project costs should be estimated by sketching them out on the game board using a marker and measuring sketched lines with a ruler.
 - a. Costs per inch for rail and bus are included on the game board's cost menu (remember to double the costs for projects within the center city circle).
 - b. The leader should add up the total estimated cost of all nominated projects on the game log.
 - c. If the total cost is less than the Dots & Dashes System Expansion budget, go around the board again (but you are not required to spend all of your available dollars).
 - c. As projects are eliminated, they should be crossed off.
5. Once your group has an agreed set of projects:
 - a. Complete the 'running total' column on your game log to Dots & Dashes dollars from your project budget on that
 - b. Make your selections final by placing Dots & Dashes stickers on top of your sketched marks and lines for those projects.
6. Completion: When all the Dots & Dashes Dollars have been spent, sign your final map and turn in your materials.

DOTS & DASHES – Game Log

Re-write Dots & Dashes System Expansion Budget here: \$ _____

As projects are agreed among the group as final, subtract each from the number above in the running total column.

Nominated Project Description	Project location (from / to)	Estimated Cost (measured)	Running Total (to that project)



Step Six: Begin the Game!



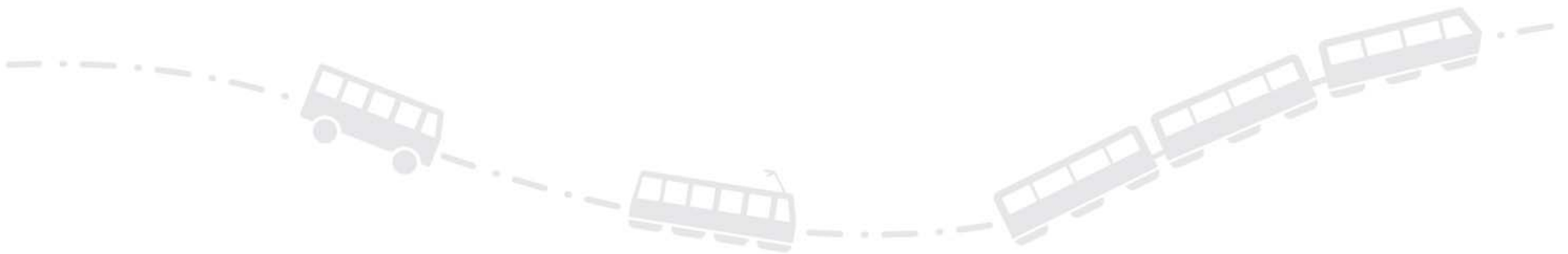
- Your group has **1 hour** to spend your Dots & Dashes project budget on transit projects throughout the region.
- Raise your hand to call over a facilitator if you have questions or need help.



Time Remaining



- There are now 30 minutes remaining



Time Remaining



- There are now **10 minutes** remaining
- Your group should be finalizing project selections and affixing your Dots & Dashes



Time's Up!



- When your group is finished, please sign or initial your game board to show that your group members agree on your final results
- Thank You for playing Dots & Dashes!
- Please complete the participant survey on your way out
- Results and updates will be posted on our website:

www.dotsanddashes.org

