



Appendix F

Environmental Justice Appendix

This Page Intentionally Left Blank

# APPENDIX F: TITLE VI AND ENVIRONMENTAL JUSTICE (EJ) SUPPORTING DATA AND MAPPING

This appendix includes detailed tables and maps to complement the information provided in Chapter 3. All tables include data for the DVRPC-PA region of Bucks, Chester, Delaware, Montgomery, and Philadelphia Counties.

## Demographic Analysis

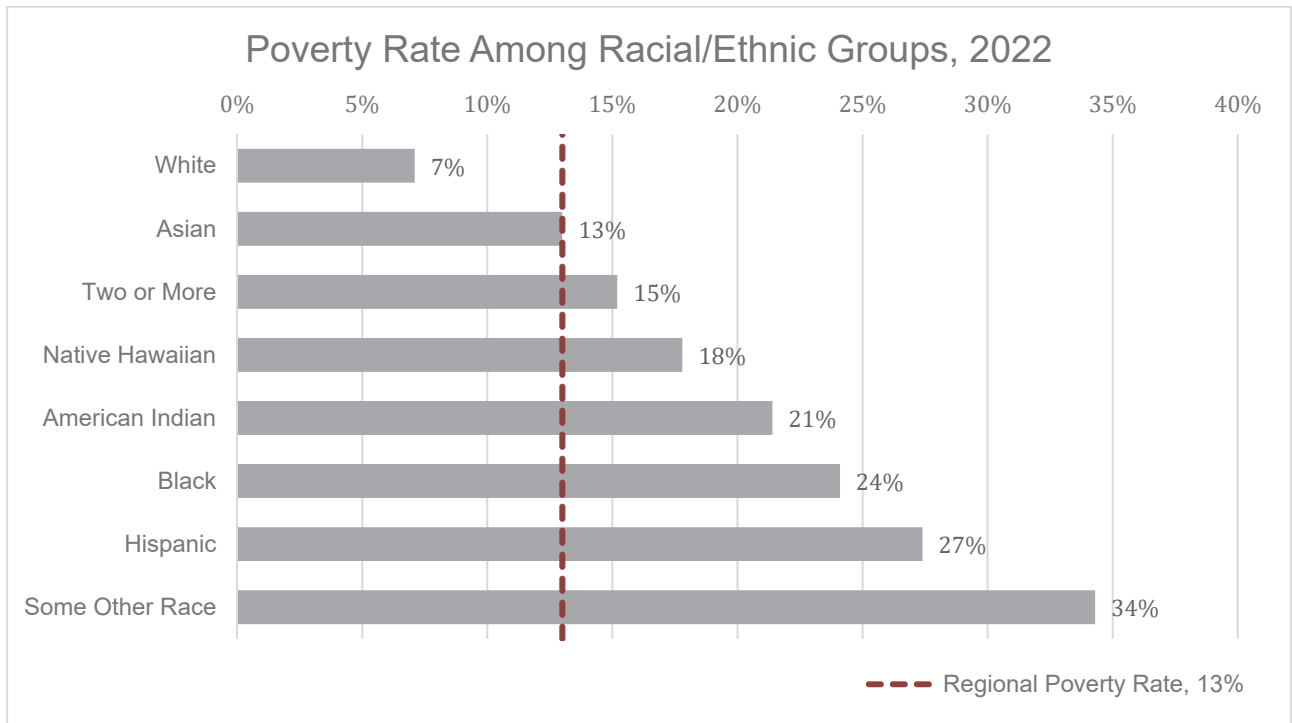
**Table F1:** Populations Estimates in the DVRPC-PA Region (2018-2022)

| Population for Five DVRPC Pennsylvania Counties | Population Estimate | Regional Percentage |
|---|---------------------|---------------------|
| <b>Total</b>                                    | 4,206,556           | 100%                |
| White, Non-Hispanic                             | 2,476,647           | 60%                 |
| <b>Minority</b>                                 | 1,705,215           | 40%                 |
| Black or African American, Non-Hispanic         | 873,519             | 21%                 |
| Asian, Non-Hispanic                             | 286,887             | 7%                  |
| Two or more races, Non-Hispanic                 | 142,545             | 3%                  |
| Hispanic  | 402,264             | 10%                 |
| <b>Low-Income Population*</b>                   | 1,074,068           | 26%                 |
| <b>Other Communities of Concern</b>             |                     |                     |
| Limited English Proficiency (LEP)               | 278,515             | 7%                  |
| Persons with a Disability                       | 538,310             | 27%                 |
| Female Head of Household with Child             | 95,385              | 6%                  |
| Elderly (65 years or older)                     | 691,650             | 16%                 |
| Carless Households                              | 244,629             | 15%                 |

Source: American Community Survey, U.S. Census Bureau, 2018-2022.

\*DVRPC's IPD analysis defines Low-Income Populations as 200% of the poverty level or below.

**Table F2: Cross-tabulations of Low-Income and Minority Populations**



Source: American Community Survey, U.S. Census Bureau, 2018-2022.

\*DVRPC's IPD analysis defines Low-Income Populations as 200% of the poverty level or below.

**Figure F1: Concentrations of Low-Income Populations**

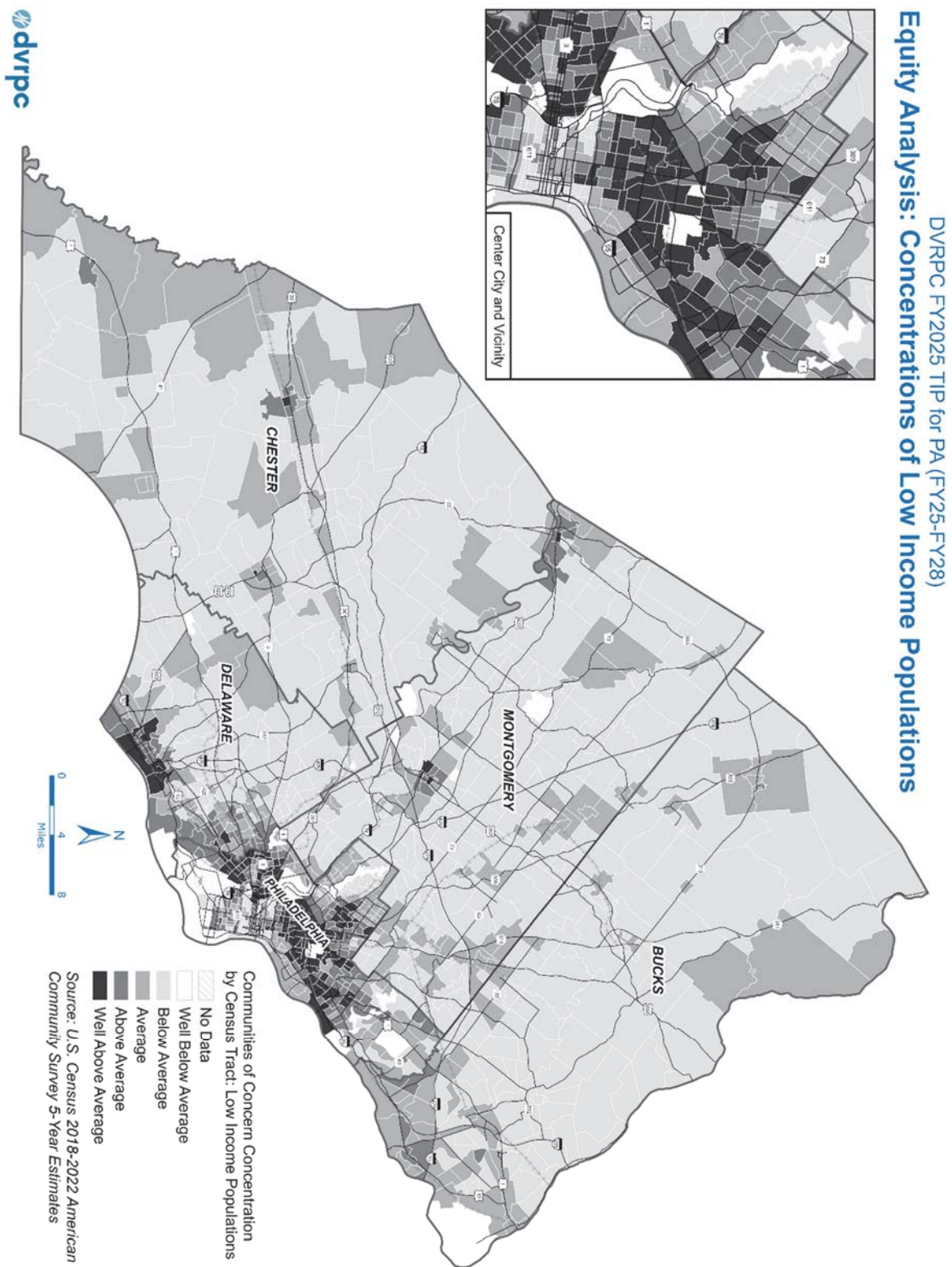


Figure F2: Concentrations of Racial Minority Populations

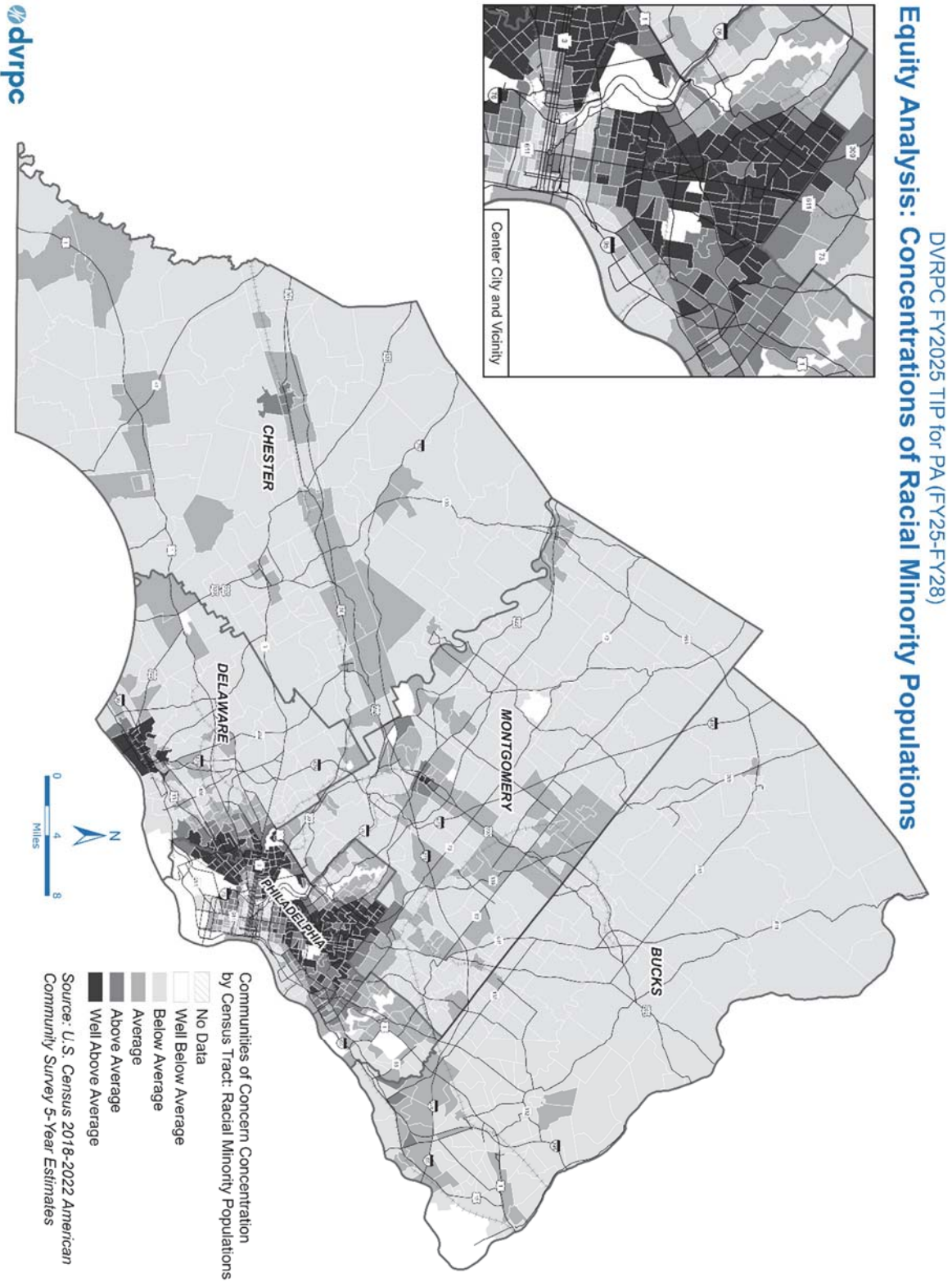
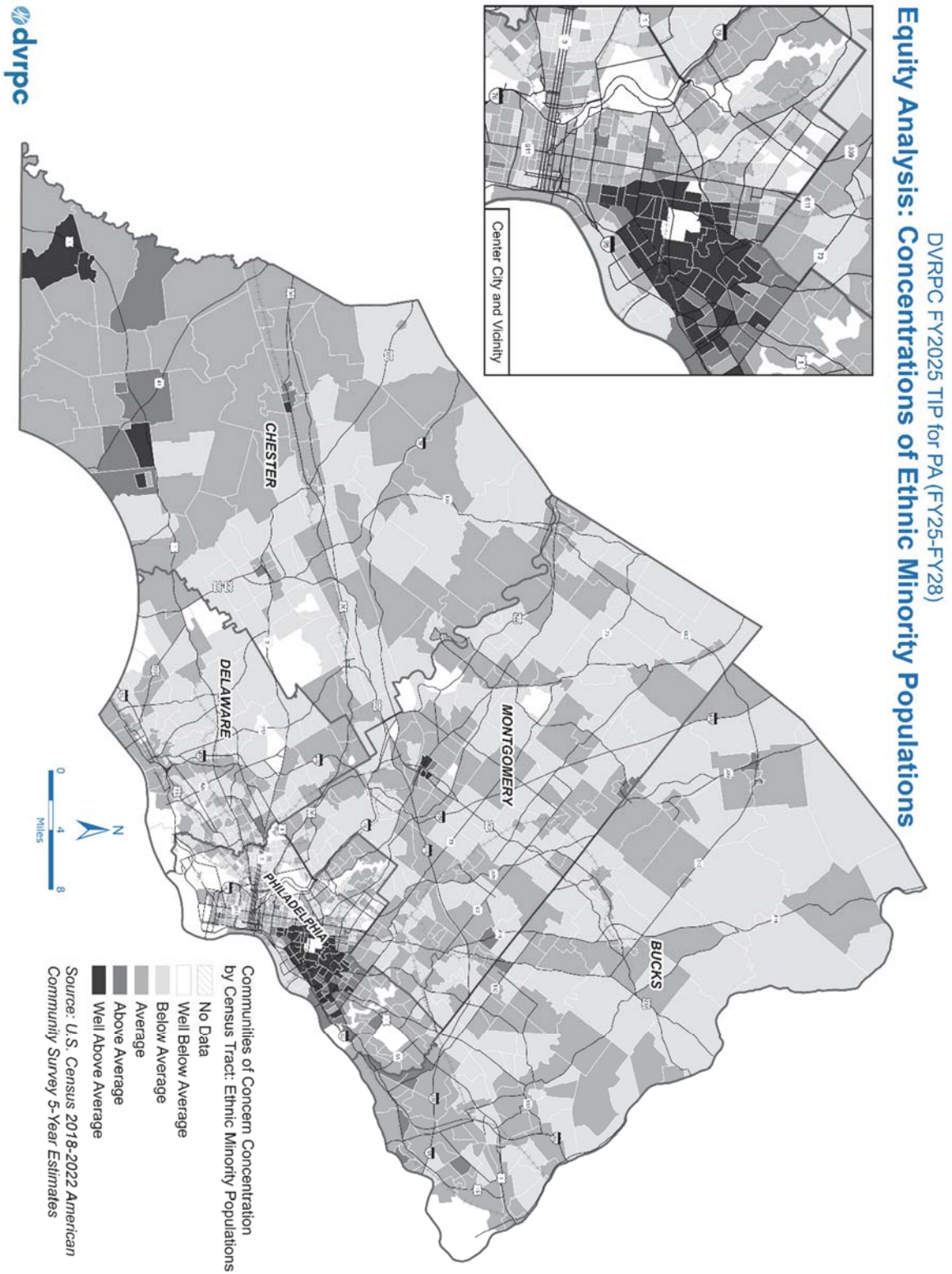




Figure F3: Concentrations of Ethnic Minority Populations



## Assessing Conditions and Needs

Data included in the tables and maps below were acquired from the US Census Bureau, 2018-2022 American Community Survey 5-year estimates and PennDOT. The International Roughness Index (IRI) data for pavement condition is collected by PennDOT for about 30,000 miles of state road network across Pennsylvania. The bridge condition data was collected from PennDOT’s Bridge Management System (BMS). Low-income and minority population intervals were based on the breaks used for DVRPC’s Indicators of Potential Disadvantage (IPD). Note that this analysis defined “Low-Income” as 200 percent of the federal poverty level or less, and data was analyzed at the census tract level. DVRPC utilized data provided by PennDOT and sourced from the US Census Bureau data to calculate and compile the results shown in the following tables and maps.

Table and map representations of asset condition data shown alongside demographic data are consistent with methodology put forth in the [South Central Pennsylvania Environmental Justice Unified Process and Methodology Guide](#).

**Table F3:** Distribution of Poor Condition Bridges by Low-Income Population Intervals

| Low-Income Intervals      | Population       | Population as a Percent of the Region | Total Bridges in Poor Condition | Percent Bridges in Poor Condition | Total Deck Area in Poor Condition | Percent of Deck Area in Poor Condition |
|---------------------------|------------------|---------------------------------------|---------------------------------|-----------------------------------|-----------------------------------|--|
| Well Above Average        | 545,212          | 13.0%                                 | 37                              | 20.1%                             | 429,617                           | 13.1%                                  |
| Above Average             | 710,636          | 16.9%                                 | 70                              | 22.5%                             | 609,641                           | 14.2%                                  |
| Average                   | 1,177,761        | 28.0%                                 | 177                             | 14.5%                             | 972,175                           | 10.1%                                  |
| Below Average             | 1,767,679        | 42.1%                                 | 328                             | 13.3%                             | 823,900                           | 6.7%                                   |
| <b>DVRPC- PA Regional</b> | <b>4,201,288</b> | <b>100%</b>                           | <b>527</b>                      | <b>14.0%</b>                      | <b>2,328,525</b>                  | <b>7.9%</b>                            |

Source: American Community Survey, U.S. Census Bureau, 2018-2022; PennDOT. DVRPC’s IPD analysis defines Low-Income Populations as 200% of the poverty level or below.



**Table F4:** Distribution of Poor Condition Bridges (State and Local) by Racial Minority Population Intervals

| Racial Minority Intervals | Population       | Population as a Percent of the Region | Total Bridges in Poor Condition | Percent Bridges in Poor Condition | Total Deck Area in Poor Condition | Percent of Deck Area in Poor Condition |
|---------------------------|------------------|---------------------------------------|---------------------------------|-----------------------------------|-----------------------------------|--|
| Well Above Average        | 685,144          | 16.3%                                 | 39                              | 21.0%                             | 488,509                           | 27.5%                                  |
| Above Average             | 534,907          | 12.7%                                 | 43                              | 20.9%                             | 252,667                           | 12.9%                                  |
| Average                   | 1,069,545        | 25.5%                                 | 135                             | 12.4%                             | 720,346                           | 6.9%                                   |
| Below Average             | 1,911,692        | 45.5%                                 | 385                             | 14.5%                             | 1,276,380                         | 8.1%                                   |
| <b>DVRPC- PA Regional</b> | <b>4,201,288</b> | <b>100%</b>                           | <b>527</b>                      | <b>14.0%</b>                      | <b>2,328,525</b>                  | <b>7.9%</b>                            |

Source: American Community Survey, U.S. Census Bureau, 2018-2022; PennDOT.

**Table F5:** Distribution of Poor Condition Bridges (State and Local) by Ethnic Minority Population Intervals

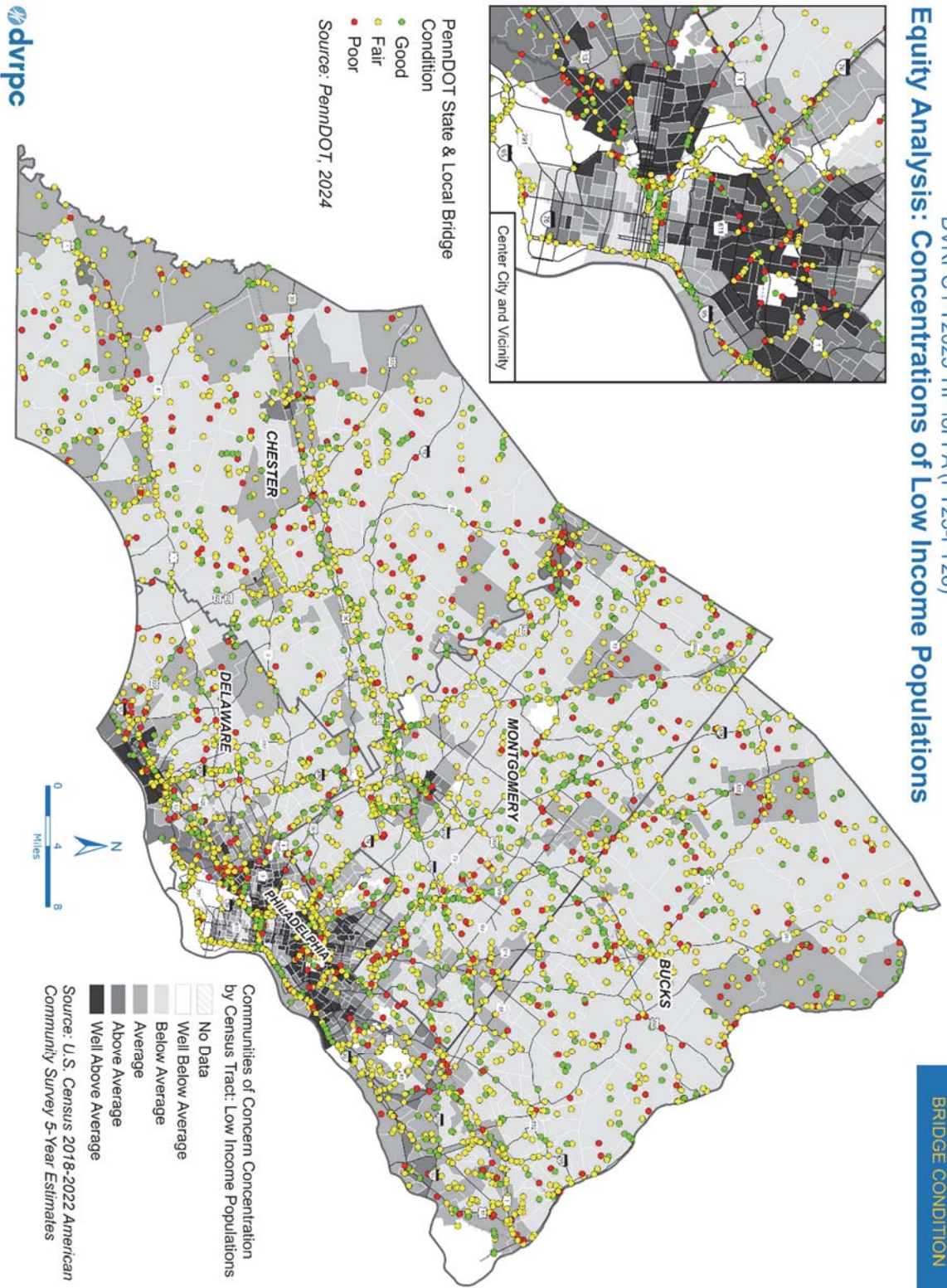
| Ethnic Minority Intervals | Population       | Population as a Percent of the Region | Total Bridges in Poor Condition | Percent Bridges in Poor Condition | Total Deck Area in Poor Condition | Percent of Deck Area in Poor Condition |
|---------------------------|------------------|---------------------------------------|---------------------------------|-----------------------------------|-----------------------------------|--|
| Well Above Average        | 291,054          | 6.9%                                  | 17                              | 18.5%                             | 207,877                           | 25.9%                                  |
| Above Average             | 269,236          | 6.4%                                  | 31                              | 17.9%                             | 206,427                           | 14.1%                                  |
| Average                   | 2,163,073        | 51.5%                                 | 311                             | 14.6%                             | 1,191,541                         | 7.5%                                   |
| Below Average             | 1,406,561        | 33.5%                                 | 255                             | 13.8%                             | 1,252,988                         | 11.5%                                  |
| Well Below Average*       | 71,364           | 1.7%                                  | 11                              | 19.6%                             | 70,795                            | 7.7%                                   |
| <b>DVRPC- PA Regional</b> | <b>4,201,288</b> | <b>100%</b>                           | <b>527</b>                      | <b>14.0%</b>                      | <b>2,328,525</b>                  | <b>7.9%</b>                            |

Source: American Community Survey, U.S. Census Bureau, 2018-2022; PennDOT.

\*DVRPC's Indicators of Potential Disadvantage (IPD) includes a fifth interval for Well Below Average concentrations of ethnic minority populations.

DVRPC FY2025 TIP for PA (FY25-FY28)  
**Equity Analysis: Concentrations of Low Income Populations**

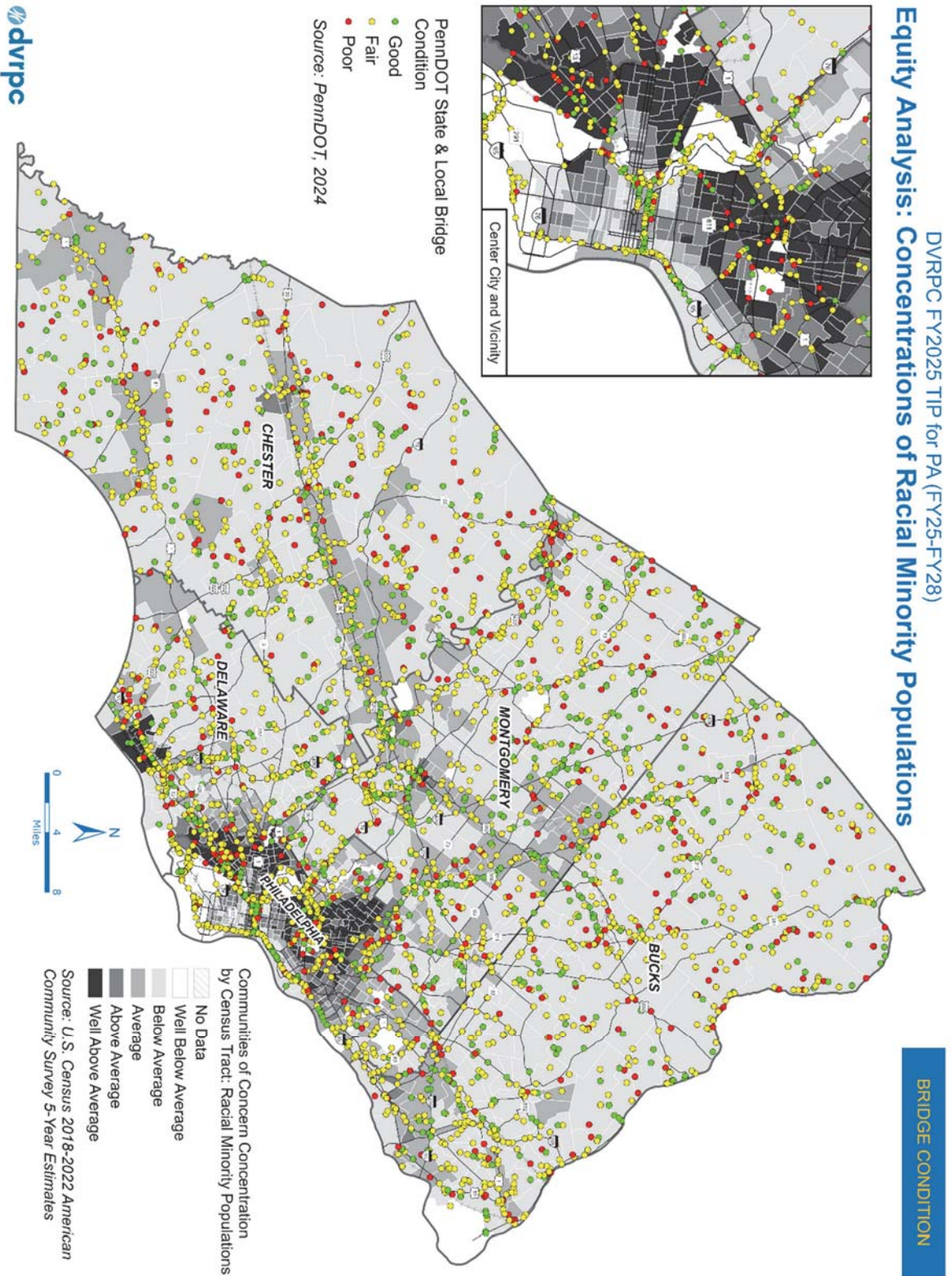
BRIDGE CONDITION



**Figure F4: Bridge Condition and Concentrations of Low-Income Populations**



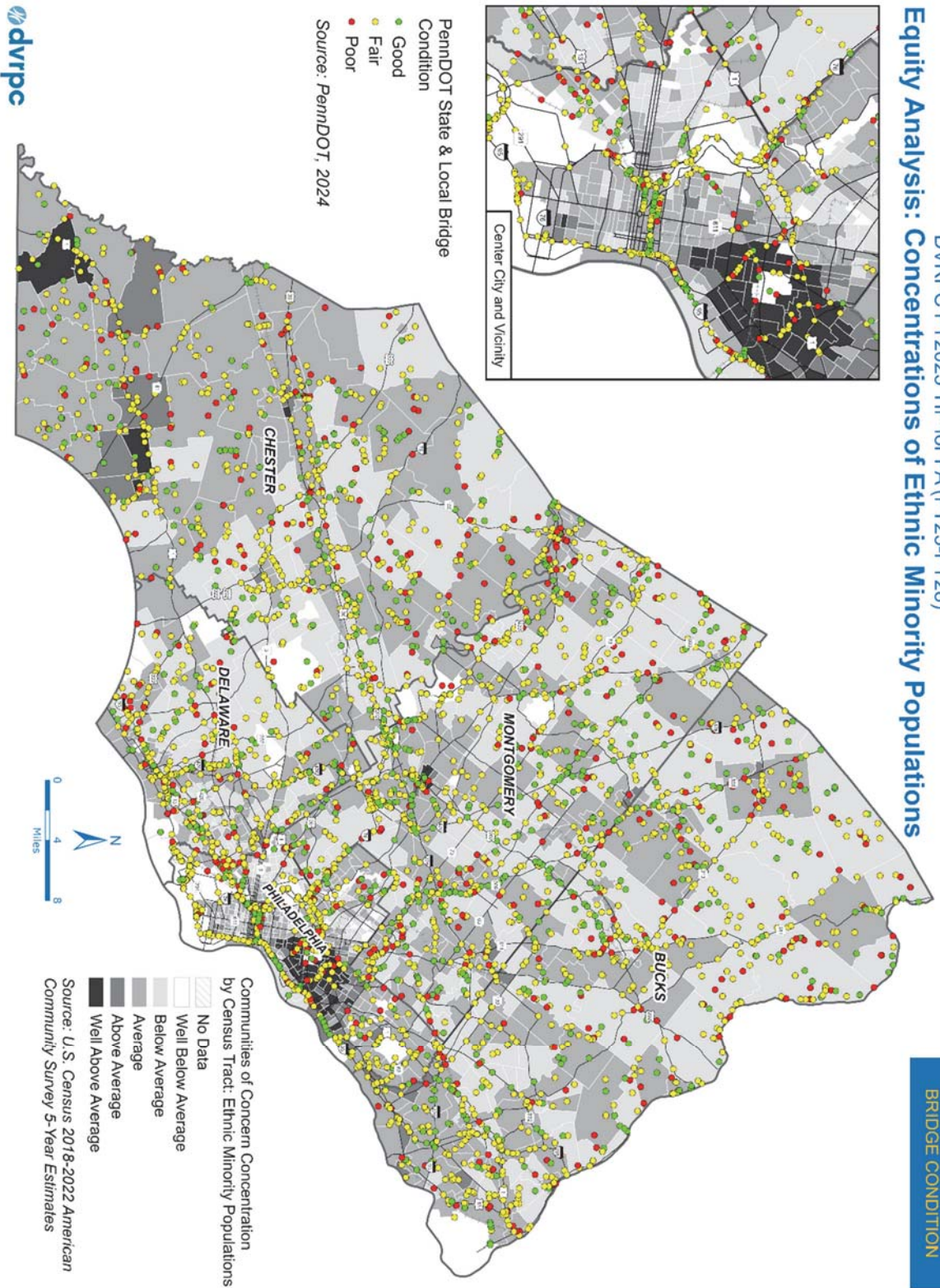
Figure F5: Bridge Condition and Concentrations of Racial Minority Populations





DVRPC FY2025 TIP for PA (FY25-FY28)  
**Equity Analysis: Concentrations of Ethnic Minority Populations**

BRIDGE CONDITION



**Figure F6: Bridge Condition and Concentrations of Ethnic Minority Populations**

**Table F6:** Distribution of International Roughness Index (IRI) Values by Low-Income Population Intervals

| Low-Income Intervals      | Population       | Population as a Percent of the Region | Pavement in Excellent Condition (%) | Pavement in Good Condition (%) | Pavement in Fair Condition (%) | Pavement in Poor Condition (%) |
|---------------------------|------------------|---------------------------------------|-------------------------------------|--------------------------------|--------------------------------|--------------------------------|
| Well Above Average        | 545,212          | 13.0%                                 | 3.3%                                | 18.5%                          | 24.9%                          | 48.7%                          |
| Above Average             | 710,636          | 16.9%                                 | 2.9%                                | 18.3%                          | 32.9%                          | 40.3%                          |
| Average                   | 1,177,761        | 28.0%                                 | 8.5%                                | 28.8%                          | 31.8%                          | 25.4%                          |
| Below Average             | 1,767,679        | 42.1%                                 | 10.0%                               | 29.9%                          | 32.6%                          | 17.6%                          |
| <b>DVRPC- PA Regional</b> | <b>4,201,288</b> | <b>100%</b>                           | <b>9.2%</b>                         | <b>29.2%</b>                   | <b>32.3%</b>                   | <b>21.3%</b>                   |

Source: American Community Survey, U.S. Census Bureau, 2018-2022; PennDOT.  
DVRPC's IPD analysis defines Low-Income Populations as 200% of the poverty level or below.

**Table F7:** Distribution of International Roughness Index (IRI) Values by Racial Minority Population Intervals

| Racial Minority Intervals | Population       | Population as a Percent of the Region | Pavement in Excellent Condition (%) | Pavement in Good Condition (%) | Pavement in Fair Condition (%) | Pavement in Poor Condition (%) |
|---------------------------|------------------|---------------------------------------|-------------------------------------|--------------------------------|--------------------------------|--------------------------------|
| Well Above Average        | 685,144          | 16.3%                                 | 2.3%                                | 10.1%                          | 27.6%                          | 51.9%                          |
| Above Average             | 534,907          | 12.7%                                 | 3.4%                                | 16.2%                          | 29.0%                          | 46.5%                          |
| Average                   | 1,069,545        | 25.5%                                 | 9.5%                                | 26.6%                          | 28.6%                          | 24.5%                          |
| Below Average             | 1,911,692        | 45.5%                                 | 9.8%                                | 31.5%                          | 33.2%                          | 17.5%                          |
| <b>DVRPC- PA Regional</b> | <b>4,201,288</b> | <b>100%</b>                           | <b>9.2%</b>                         | <b>29.2%</b>                   | <b>32.3%</b>                   | <b>21.3%</b>                   |

Source: American Community Survey, U.S. Census Bureau, 2018-2022; PennDOT.

**Table F8:** Distribution of International Roughness Index (IRI) Values by Ethnic Minority Population Intervals

| Ethnic Minority Intervals | Population       | Population as a Percent of the Region | Pavement in Excellent Condition (%) | Pavement in Good Condition (%) | Pavement in Fair Condition (%) | Pavement in Poor Condition (%) |
|---------------------------|------------------|---------------------------------------|-------------------------------------|--------------------------------|--------------------------------|--------------------------------|
| Well Above Average        | 291,054          | 6.9%                                  | 2.4%                                | 33.8%                          | 34.1%                          | 28.0%                          |
| Above Average             | 269,236          | 6.4%                                  | 11.2%                               | 27.5%                          | 30.8%                          | 30.2%                          |
| Average                   | 2,163,073        | 51.5%                                 | 8.6%                                | 27.3%                          | 32.3%                          | 22.8%                          |
| Below Average             | 1,406,561        | 33.5%                                 | 9.3%                                | 30.2%                          | 32.2%                          | 19.5%                          |
| Well Below Average*       | 71,364           | 1.7%                                  | 4.3%                                | 23.0%                          | 35.9%                          | 30.7%                          |
| <b>DVRPC- PA Regional</b> | <b>4,201,288</b> | <b>100%</b>                           | <b>9.2%</b>                         | <b>29.2%</b>                   | <b>32.3%</b>                   | <b>21.3%</b>                   |

Source: American Community Survey, U.S. Census Bureau, 2018-2022; PennDOT.

\*DVRPC's Indicators of Potential Disadvantage (IPD) includes a fifth interval for Well Below Average concentrations of ethnic minority populations.



Figure F8: Pavement Condition and Concentrations of Low-Income Populations

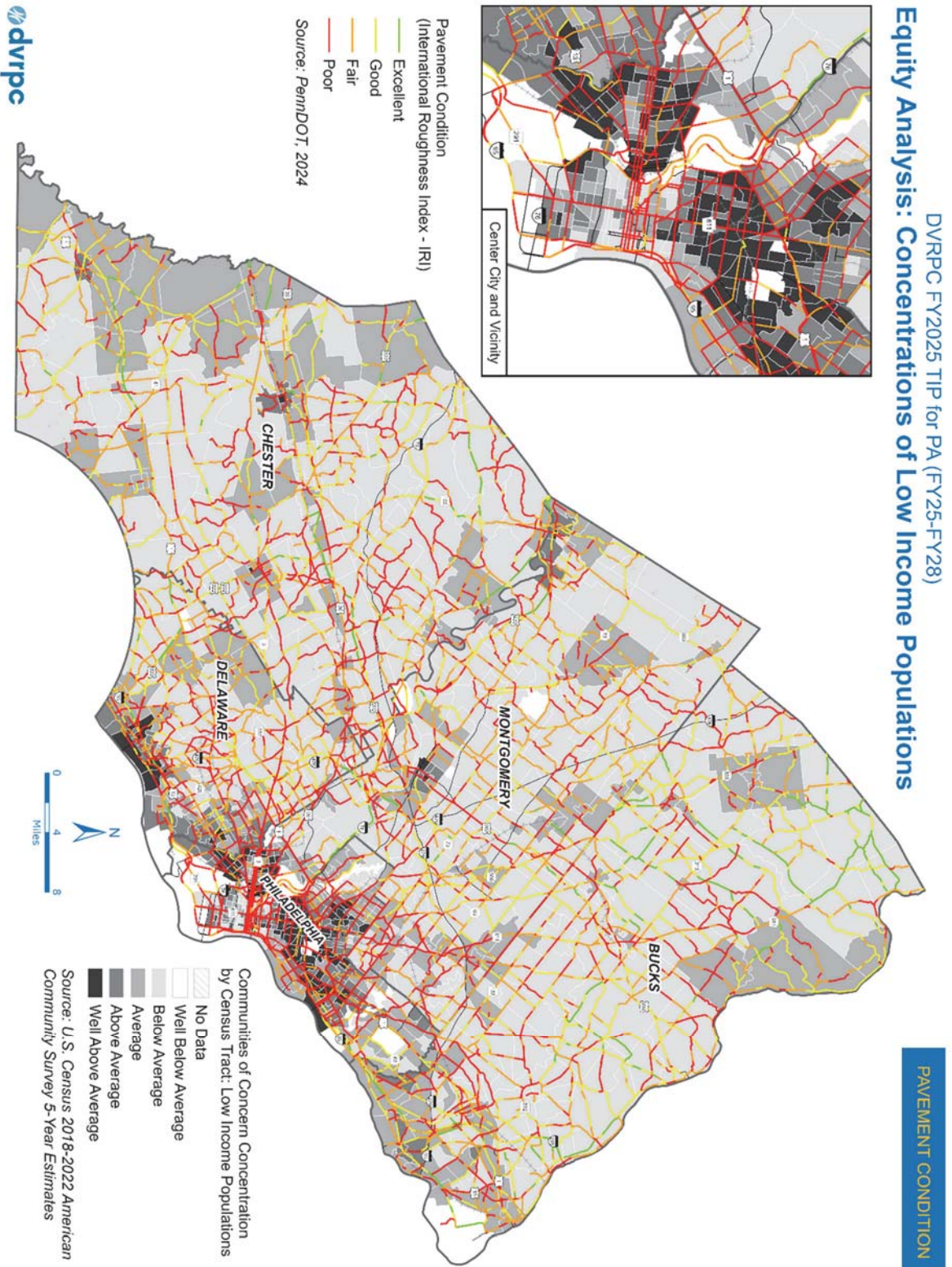




Figure F9: Pavement Condition and Concentrations of Racial Minority Populations

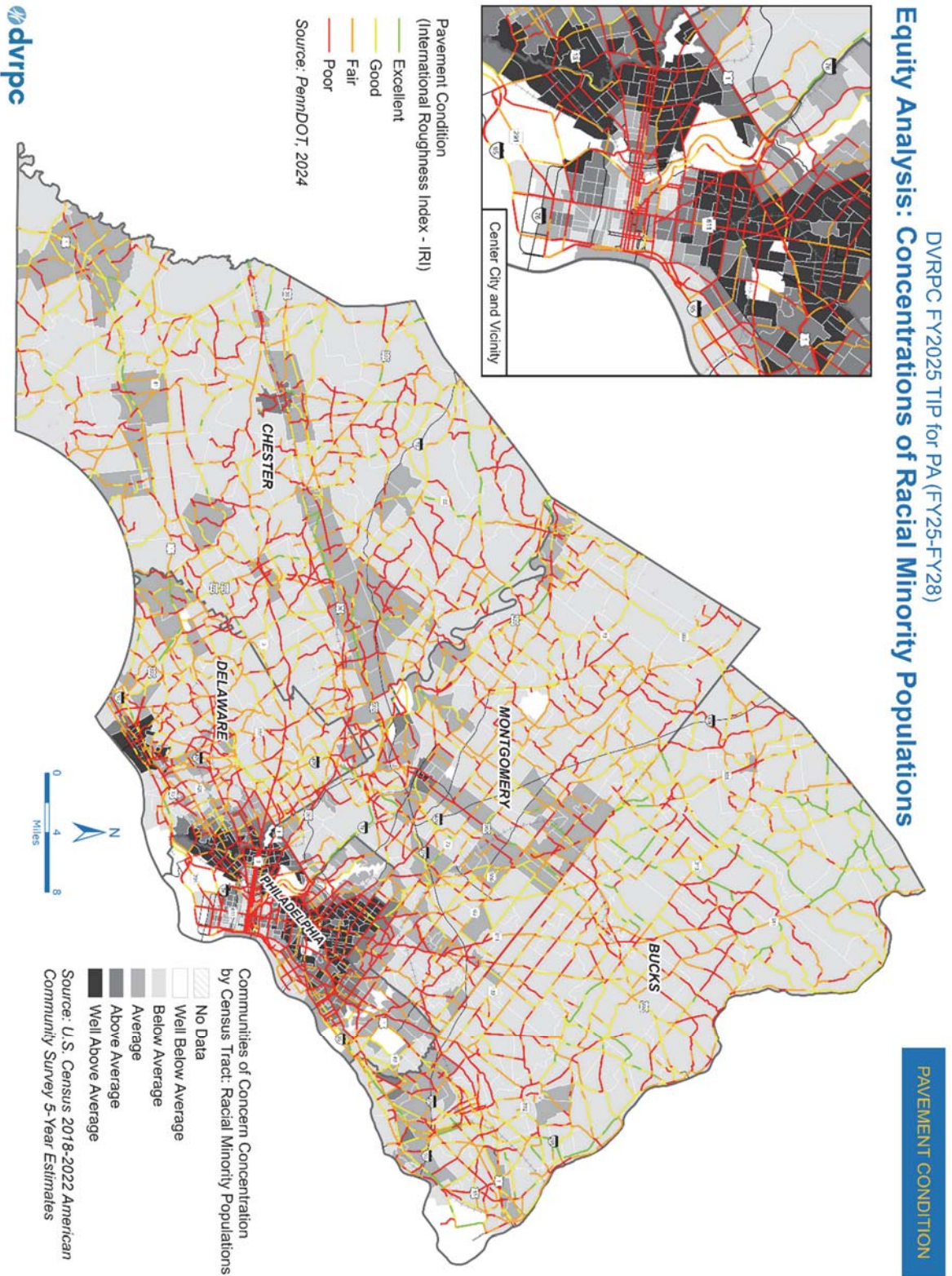
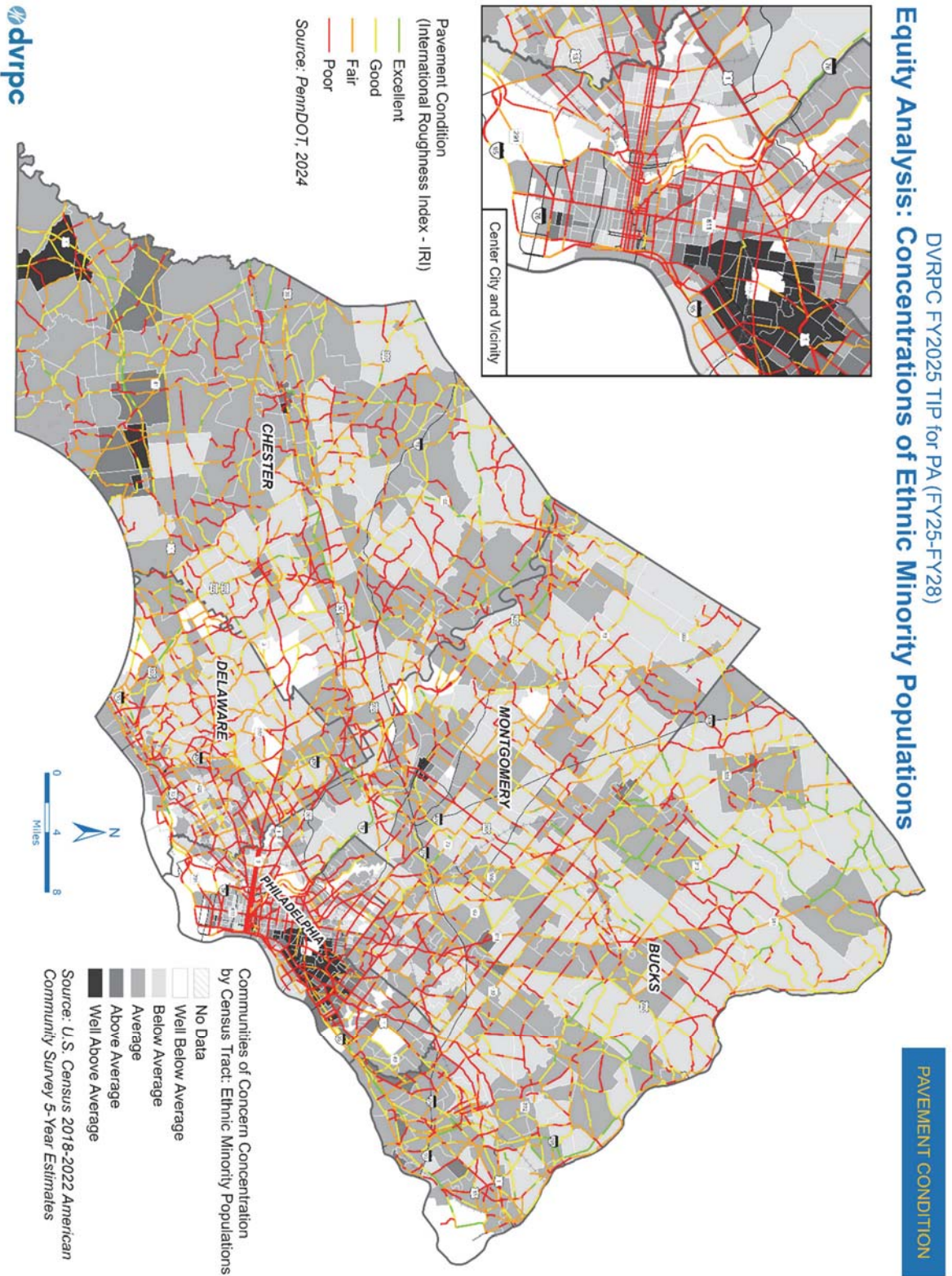




Figure F9: Pavement Condition and Concentrations of Ethnic Minority Populations



**Table F9:** Distribution of Crashes (2018-2022) by Low-Income Population Intervals

| Low-Income Intervals      | Population       | Population as a Percent of the Region | Total Crashes  | Crashes Per 10K People | Fatalities per 10K People | Serious Injuries per 10K People |
|---------------------------|------------------|---------------------------------------|----------------|------------------------|---------------------------|---------------------------------|
| Well Above Average        | 545,212          | 13.0%                                 | 18,909         | 346.8                  | 4.3                       | 8.3                             |
| Above Average             | 710,636          | 16.9%                                 | 22,018         | 309.8                  | 3.3                       | 6.2                             |
| Average                   | 1,177,761        | 28.0%                                 | 45,527         | 386.6                  | 3                         | 6.9                             |
| Below Average             | 1,767,679        | 42.1%                                 | 71,618         | 405.2                  | 2.7                       | 6.3                             |
| <b>DVRPC- PA Regional</b> | <b>4,201,288</b> | <b>100%</b>                           | <b>166,950</b> | <b>397.4</b>           | <b>3.3</b>                | <b>7</b>                        |

Source: American Community Survey, U.S. Census Bureau, 2018-2022; PennDOT.  
DVRPC's IPD analysis defines Low-Income Populations as 200% of the poverty level or below.

**Table F10:** Distribution of Crashes (2018-2022) by Racial Minority Population Intervals

| Racial Minority Intervals | Population       | Population as a Percent of the Region | Total Crashes  | Crashes Per 10K People | Fatalities per 10K People | Serious Injuries per 10K People |
|---------------------------|------------------|---------------------------------------|----------------|------------------------|---------------------------|---------------------------------|
| Well Above Average        | 685,144          | 16.3%                                 | 21,037         | 307                    | 3.6                       | 7.8                             |
| Above Average             | 534,907          | 12.7%                                 | 16,688         | 312                    | 3.7                       | 6.2                             |
| Average                   | 1,069,545        | 25.5%                                 | 41,976         | 392.5                  | 3                         | 6                               |
| Below Average             | 1,911,692        | 45.5%                                 | 78,371         | 410                    | 2.8                       | 6.9                             |
| <b>DVRPC- PA Regional</b> | <b>4,201,288</b> | <b>100%</b>                           | <b>166,950</b> | <b>397.4</b>           | <b>3.3</b>                | <b>7</b>                        |

Source: American Community Survey, U.S. Census Bureau, 2018-2022; PennDOT.

**Table F11:** Distribution of Crashes (2018-2022) by Ethnic Minority Population Intervals

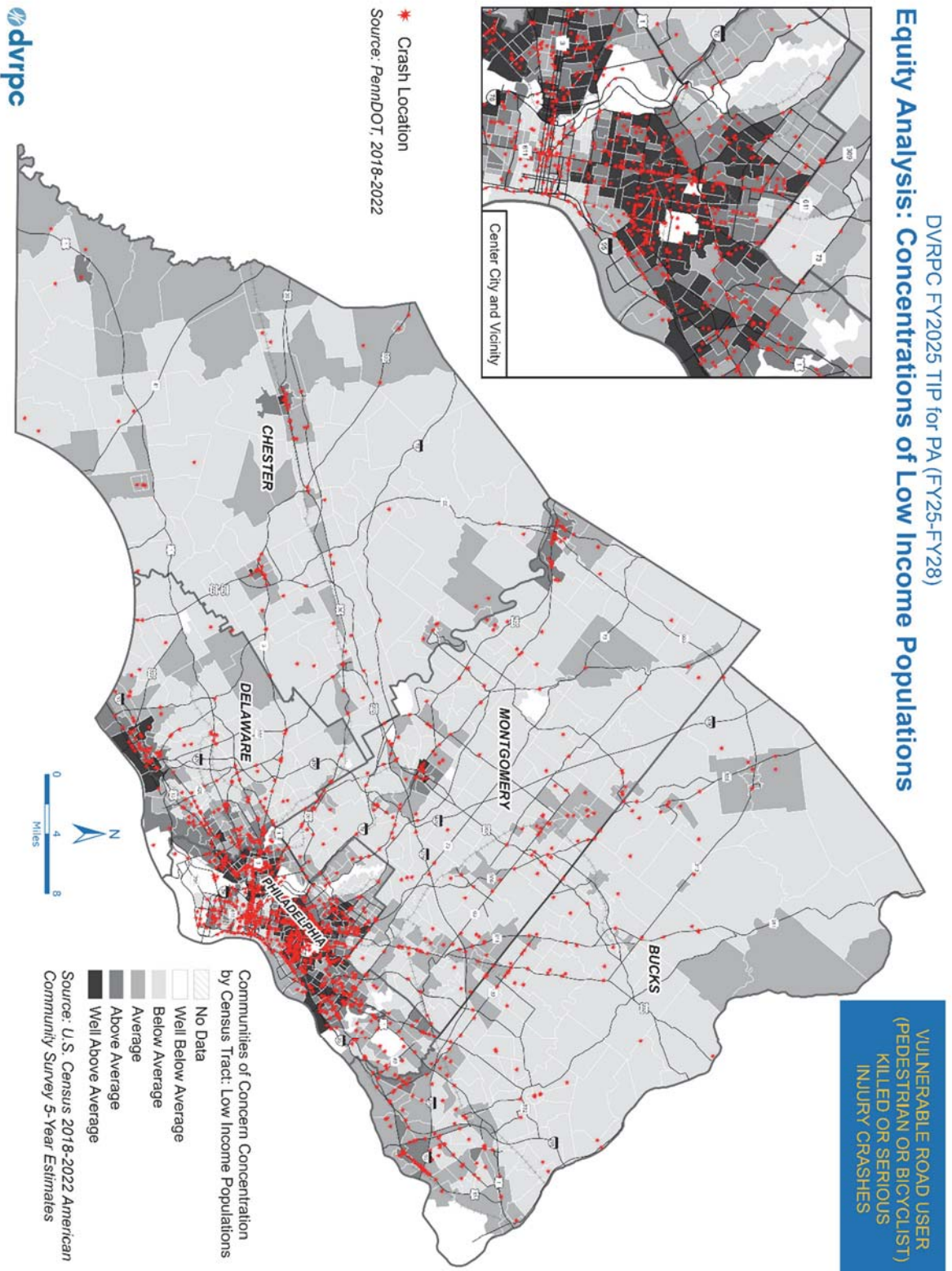
| Ethnic Minority Intervals | Population       | Population as a Percent of the Region | Total Crashes  | Crashes Per 10K People | Fatalities per 10K People | Serious Injuries per 10K People |
|---------------------------|------------------|---------------------------------------|----------------|------------------------|---------------------------|---------------------------------|
| Well Above Average        | 291,054          | 6.9%                                  | 8,545          | 293.6                  | 4.9                       | 7.2                             |
| Above Average             | 269,236          | 6.4%                                  | 10,187         | 378.4                  | 4.5                       | 6.8                             |
| Average                   | 2,163,073        | 51.5%                                 | 80,291         | 371.2                  | 2.8                       | 6.5                             |
| Below Average             | 1,406,561        | 33.5%                                 | 56,370         | 400.8                  | 3                         | 6.9                             |
| Well Below Average*       | 71,364           | 1.7%                                  | 2,679          | 375.4                  | 2.7                       | 7.3                             |
| <b>DVRPC- PA Regional</b> | <b>4,201,288</b> | <b>100%</b>                           | <b>166,950</b> | <b>397.4</b>           | <b>3.3</b>                | <b>7</b>                        |

Source: American Community Survey, U.S. Census Bureau, 2018-2022; PennDOT.

\*DVRPC's Indicators of Potential Disadvantage (IPD) includes a fifth interval for Well Below Average concentrations of ethnic minority populations.

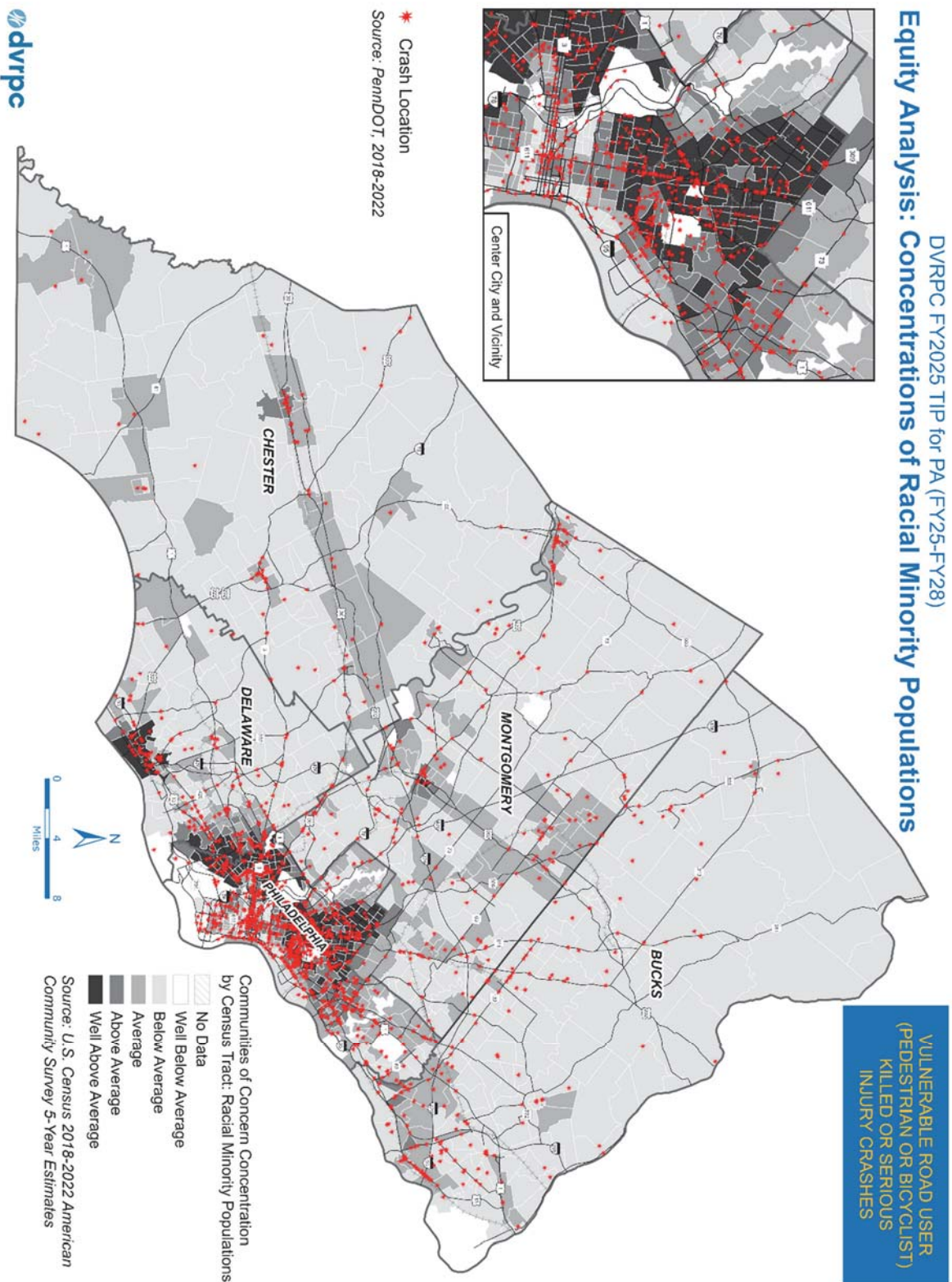


**Figure F10:** Bicyclist and Pedestrian Related Crashes, Killed and Severely-Injured (KSI) (2018-2022) and Concentrations of Low-Income Populations

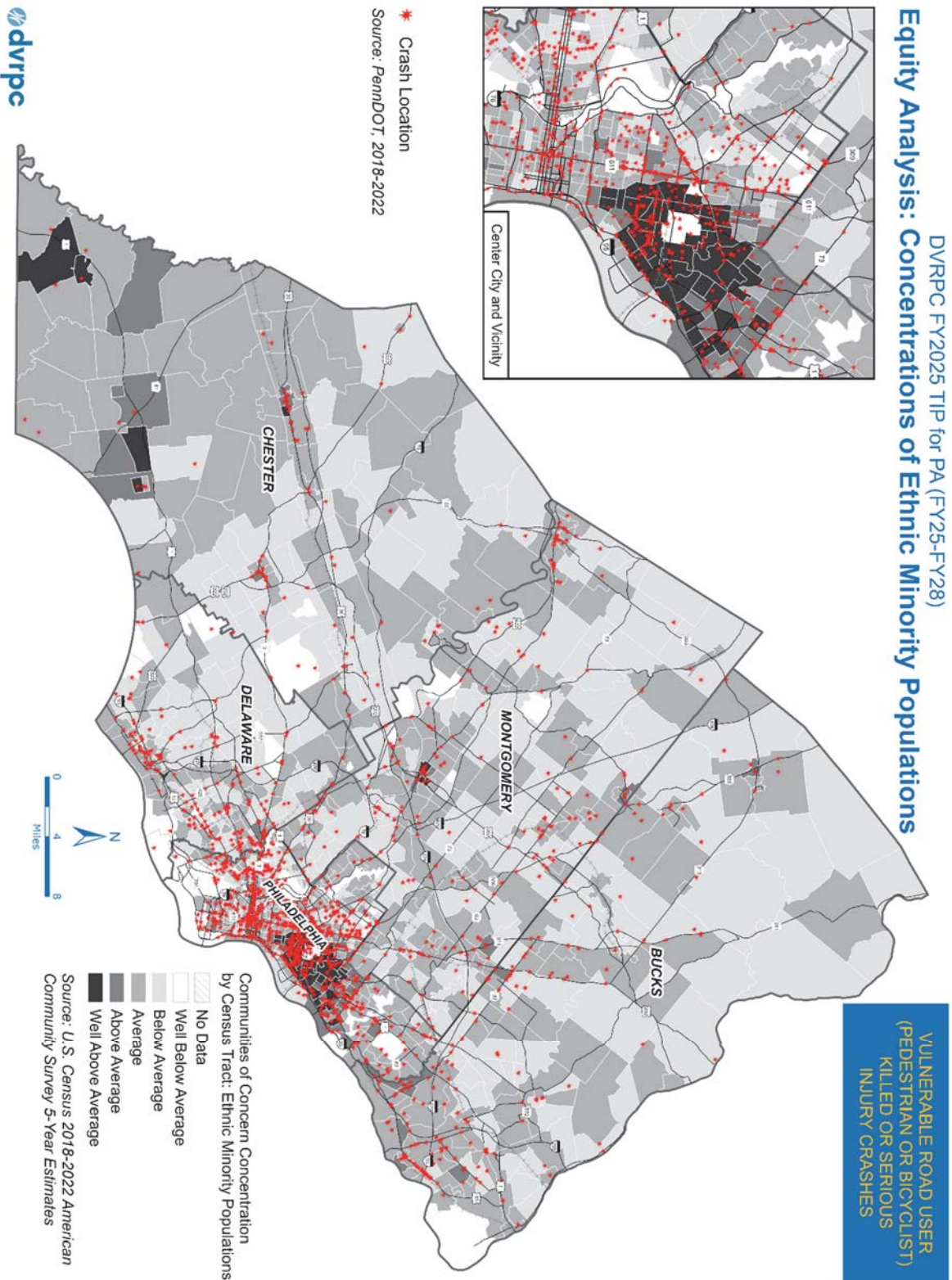




**Figure F11:** Bicyclist and Pedestrian Related Crashes, Killed and Severely-Injured (KSI (2018-2022) and Concentrations of Racial Minority Populations



**Figure F12:** Bicyclist and Pedestrian Related Crashes, Killed and Severely-Injured (KSI (2018-2022) and Concentrations of Ethnic Minority Populations



**Table F12:** Distribution of Bicyclist and Pedestrian Related Crashes (2018-2022) by Low-Income Population Intervals

| Low-Income Intervals      | Population       | Population as a Percent of the Region | Total VRU* KSI** Crashes | VRU* KSI** Crashes per 10K People | VRU* Fatalities per 10K People | VRU* Serious Injuries per 10K People |
|---------------------------|------------------|---------------------------------------|--------------------------|-----------------------------------|--------------------------------|--------------------------------------|
| Well Above Average        | 545,212          | 13.0%                                 | 259                      | 4.8                               | 1.4                            | 3.6                                  |
| Above Average             | 710,636          | 16.9%                                 | 246                      | 3.5                               | 0.9                            | 2.6                                  |
| Average                   | 1,177,761        | 28.0%                                 | 220                      | 1.9                               | 0.4                            | 1.5                                  |
| Below Average             | 1,767,679        | 42.1%                                 | 184                      | 1                                 | 0.3                            | 0.8                                  |
| <b>DVRPC- PA Regional</b> | <b>4,201,288</b> | <b>100%</b>                           | <b>952</b>               | <b>2.3</b>                        | <b>0.6</b>                     | <b>1.7</b>                           |

Source: American Community Survey, U.S. Census Bureau, 2018-2022; PennDOT.

DVRPC's IPD analysis defines Low-Income Populations as 200% of the poverty level or below.

\*Vulnerable Road Users (VRUs) include bicycle users and pedestrians

\*\*Killed and Severely Injured (KSI)

**Table F13:** Distribution of Bicyclist and Pedestrian Related Crashes (2018-2022) by Racial Minority Population Intervals

| Racial Minority Intervals | Population       | Population as a Percent of the Region | Total VRU* KSI** Crashes | VRU* KSI** Crashes per 10K People | VRU* Fatalities per 10K People | VRU* Serious Injuries per 10K People |
|---------------------------|------------------|---------------------------------------|--------------------------|-----------------------------------|--------------------------------|--------------------------------------|
| Well Above Average        | 545,212          | 13.0%                                 | 292                      | 4.3                               | 1.2                            | 3.3                                  |
| Above Average             | 710,636          | 16.9%                                 | 181                      | 3.4                               | 1                              | 2.5                                  |
| Average                   | 1,177,761        | 28.0%                                 | 221                      | 2.1                               | 0.5                            | 1.6                                  |
| Below Average             | 1,767,679        | 42.1%                                 | 215                      | 1.1                               | 0.3                            | 0.9                                  |
| <b>DVRPC- PA Regional</b> | <b>4,201,288</b> | <b>100%</b>                           | <b>952</b>               | <b>2.3</b>                        | <b>0.6</b>                     | <b>1.7</b>                           |

Source: American Community Survey, U.S. Census Bureau, 2018-2022; PennDOT.

**Table F14:** Distribution of Bicyclist and Pedestrian Related Crashes (2018-2022) by Ethnic Minority Population Intervals

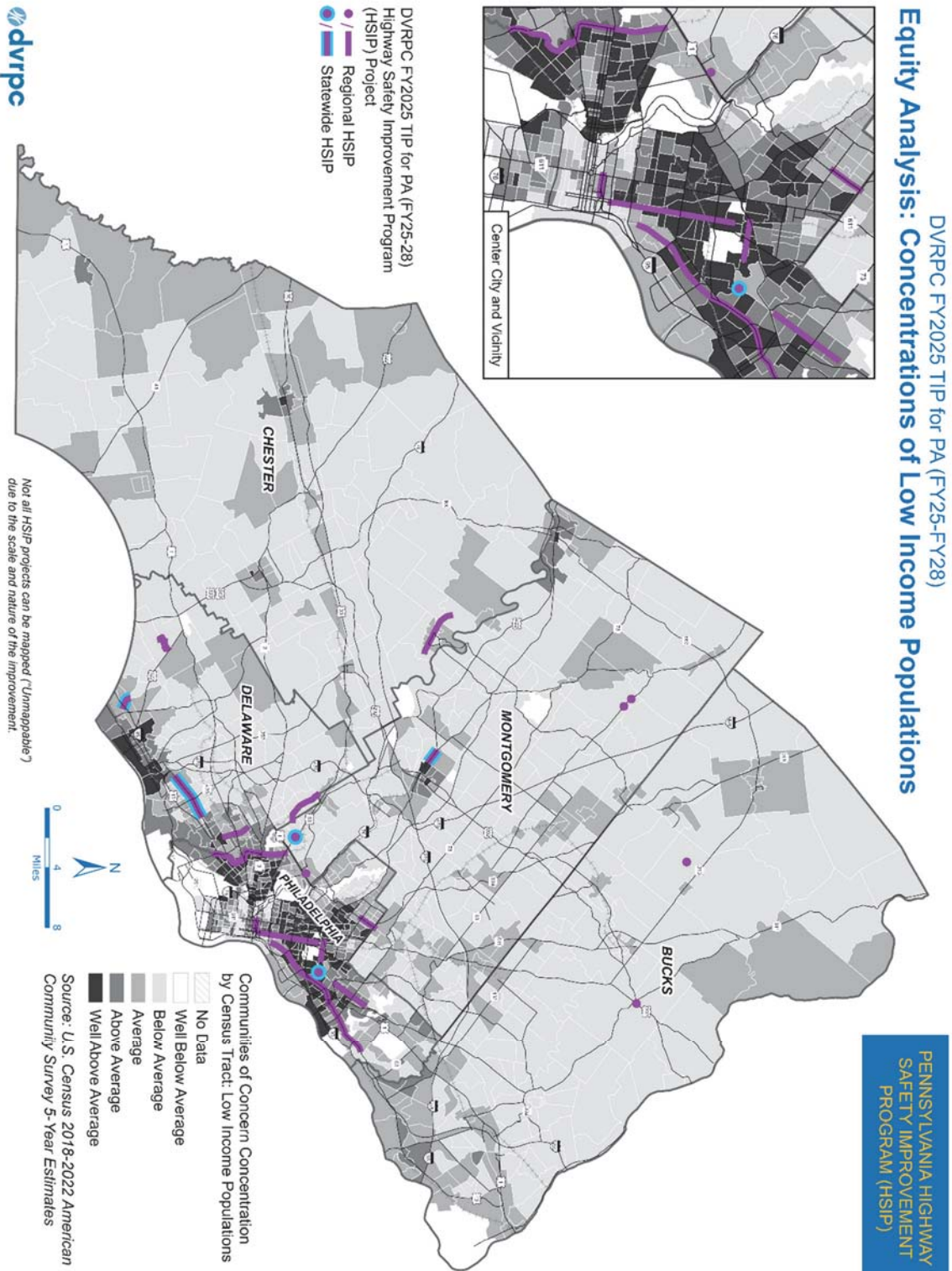
| Ethnic Minority Intervals | Population       | Population as a Percent of the Region | Total VRU* KSI** Crashes | VRU* KSI** Crashes per 10K People | VRU* Fatalities per 10K People | VRU* Serious Injuries per 10K People |
|---------------------------|------------------|---------------------------------------|--------------------------|-----------------------------------|--------------------------------|--------------------------------------|
| Well Above Average        | 545,212          | 13.0%                                 | 142                      | 4.9                               | 1.4                            | 3.6                                  |
| Above Average             | 710,636          | 16.9%                                 | 92                       | 3.4                               | 1.1                            | 2.4                                  |
| Average                   | 1,177,761        | 28.0%                                 | 424                      | 2                                 | 0.5                            | 1.5                                  |
| Below Average             | 1,767,679        | 42.1%                                 | 238                      | 1.7                               | 0.5                            | 1.3                                  |
| Well Below Average*       | 71,364           | 1.7%                                  | 13                       | 1.8                               | 0.6                            | 1.3                                  |
| <b>DVRPC- PA Regional</b> | <b>4,201,288</b> | <b>100%</b>                           | <b>952</b>               | <b>2.3</b>                        | <b>0.6</b>                     | <b>1.7</b>                           |

Source: American Community Survey, U.S. Census Bureau, 2018-2022; PennDOT.

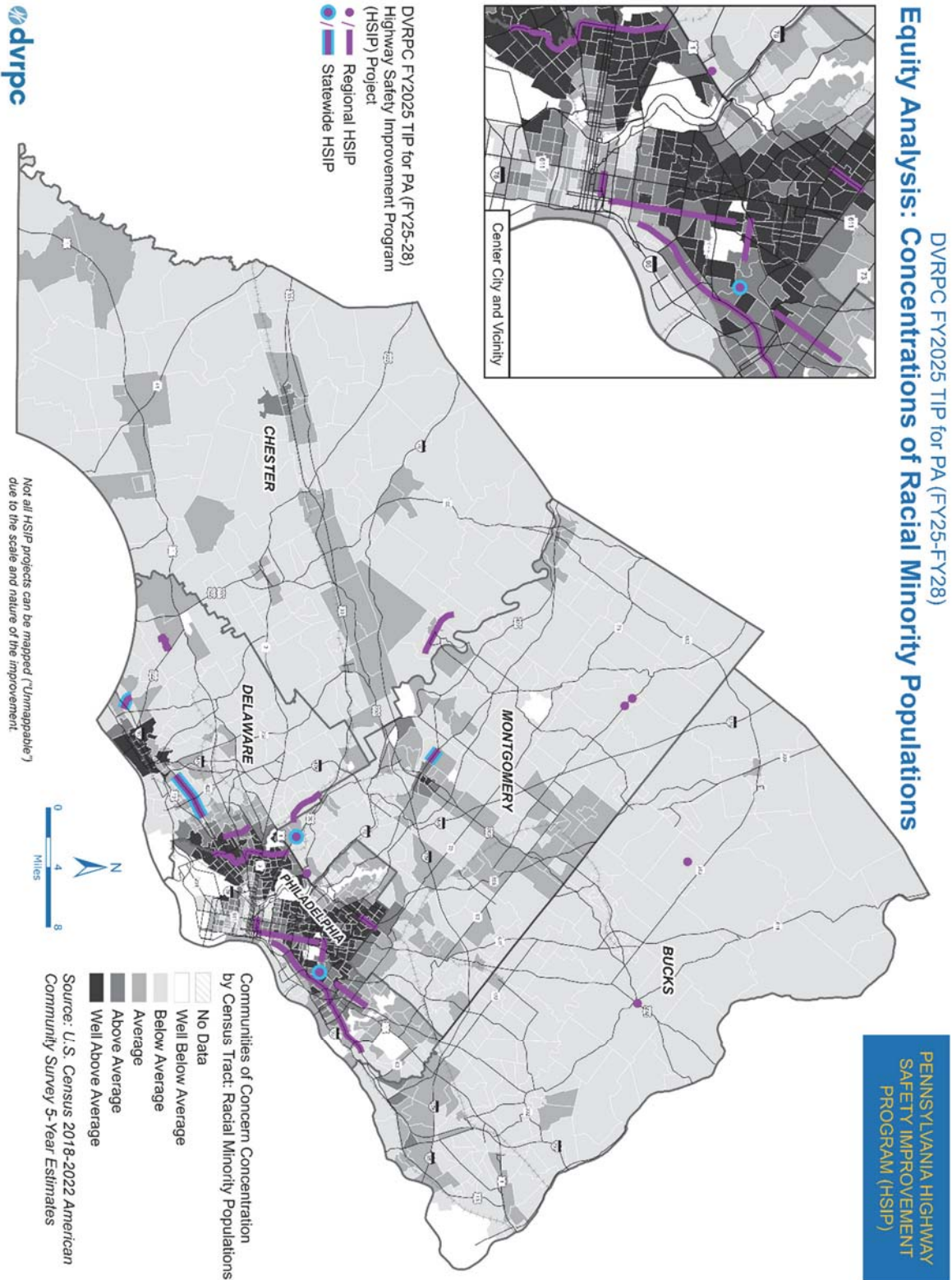
\*DVRPC's Indicators of Potential Disadvantage (IPD) includes a fifth interval for Well Below Average concentrations of ethnic minority populations.



**Figure F13: Pennsylvania Highway Safety Improvement Program (HSIP) and Concentrations of Low-Income Populations**



**Figure F14:** Pennsylvania Highway Safety Improvement Program (HSIP) and Concentrations of Racial Minority Populations





**Figure F15: Pennsylvania Highway Safety Improvement Program (HSIP) and Concentrations of Ethnic Minority Populations**

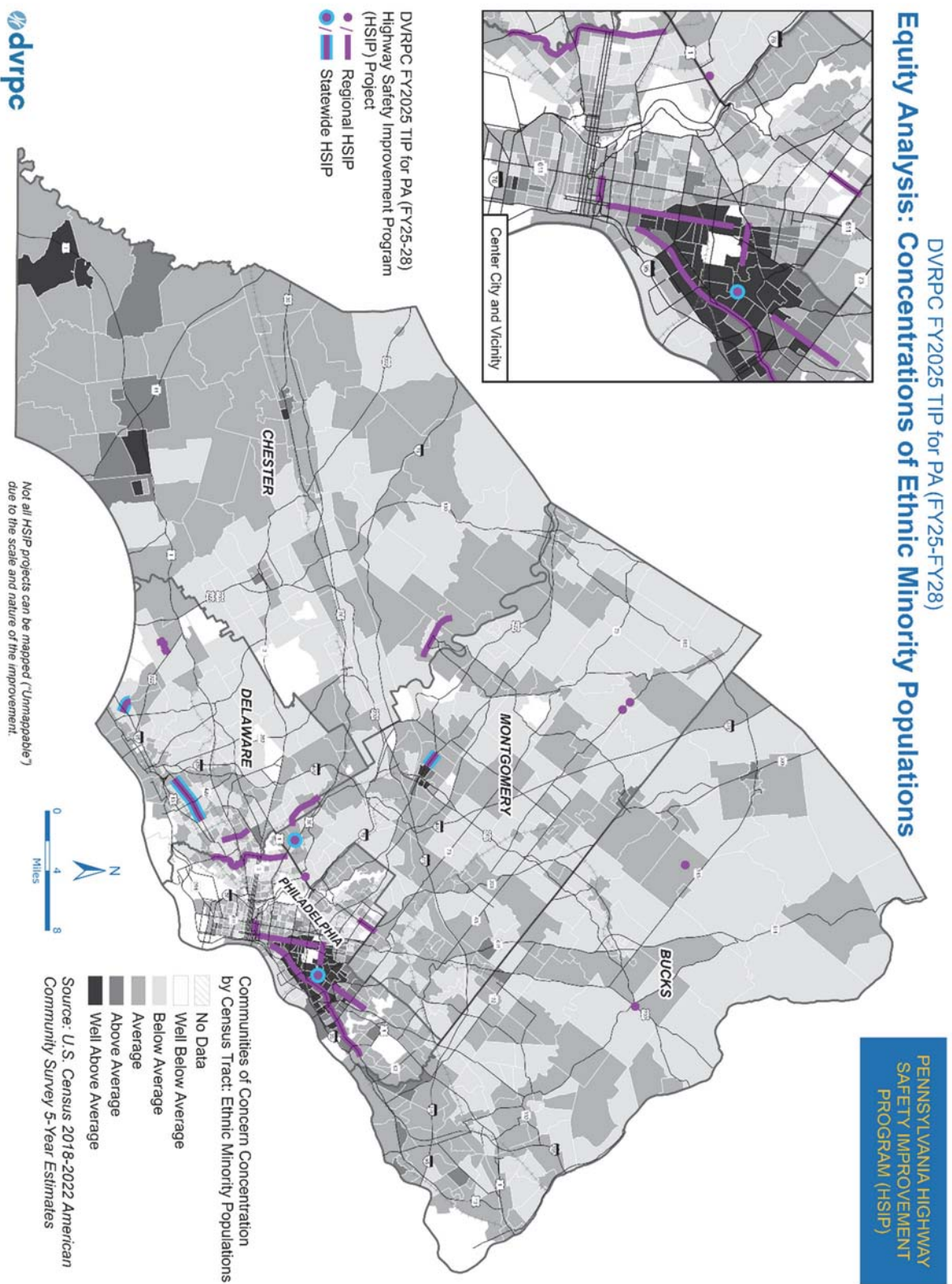


Figure F16: TIP “Highway Program” Projects and Concentrations of Low-Income Populations

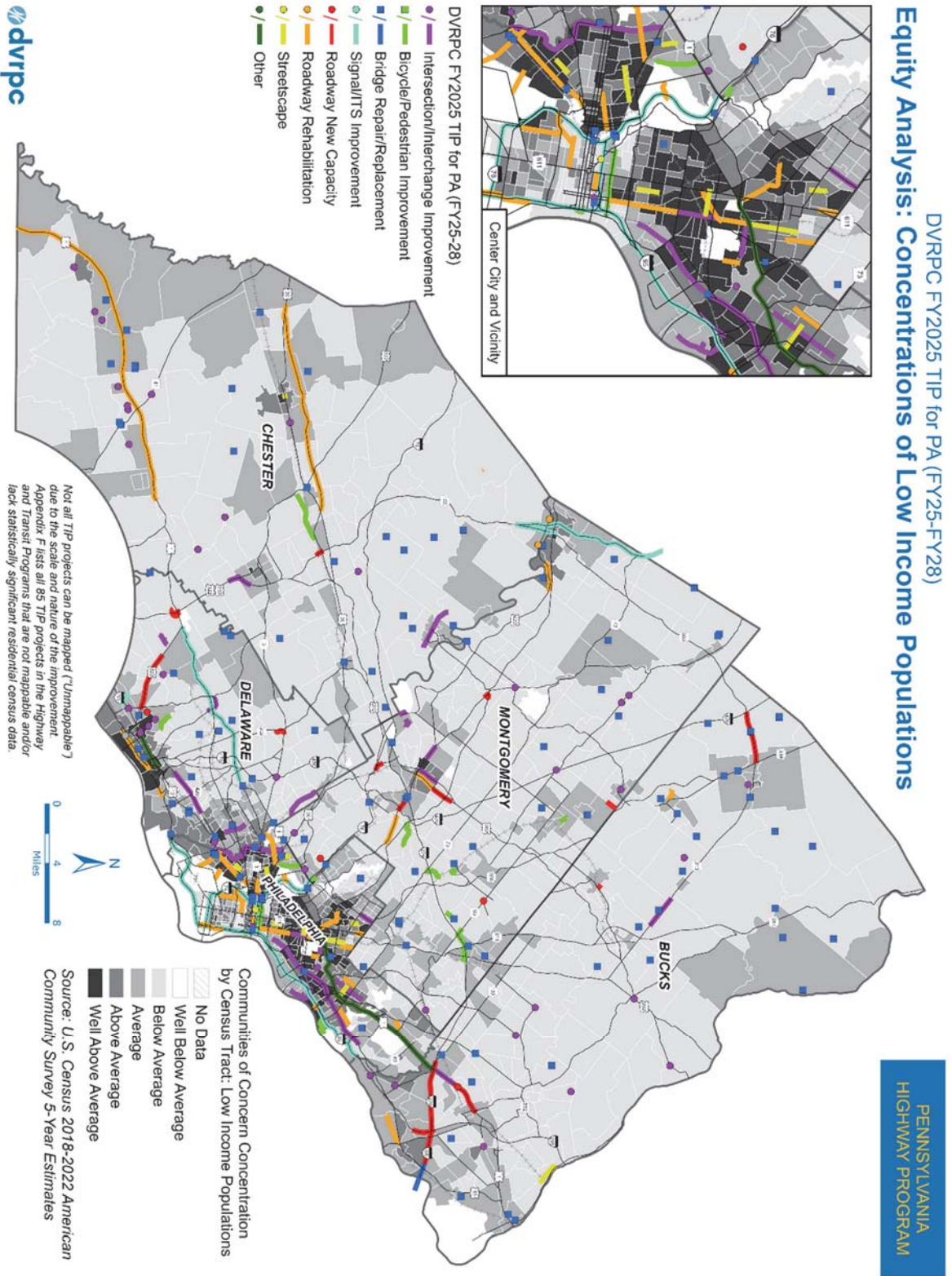




Figure F17: TIP “Highway Program” Projects and Concentrations of Racial Minority Populations

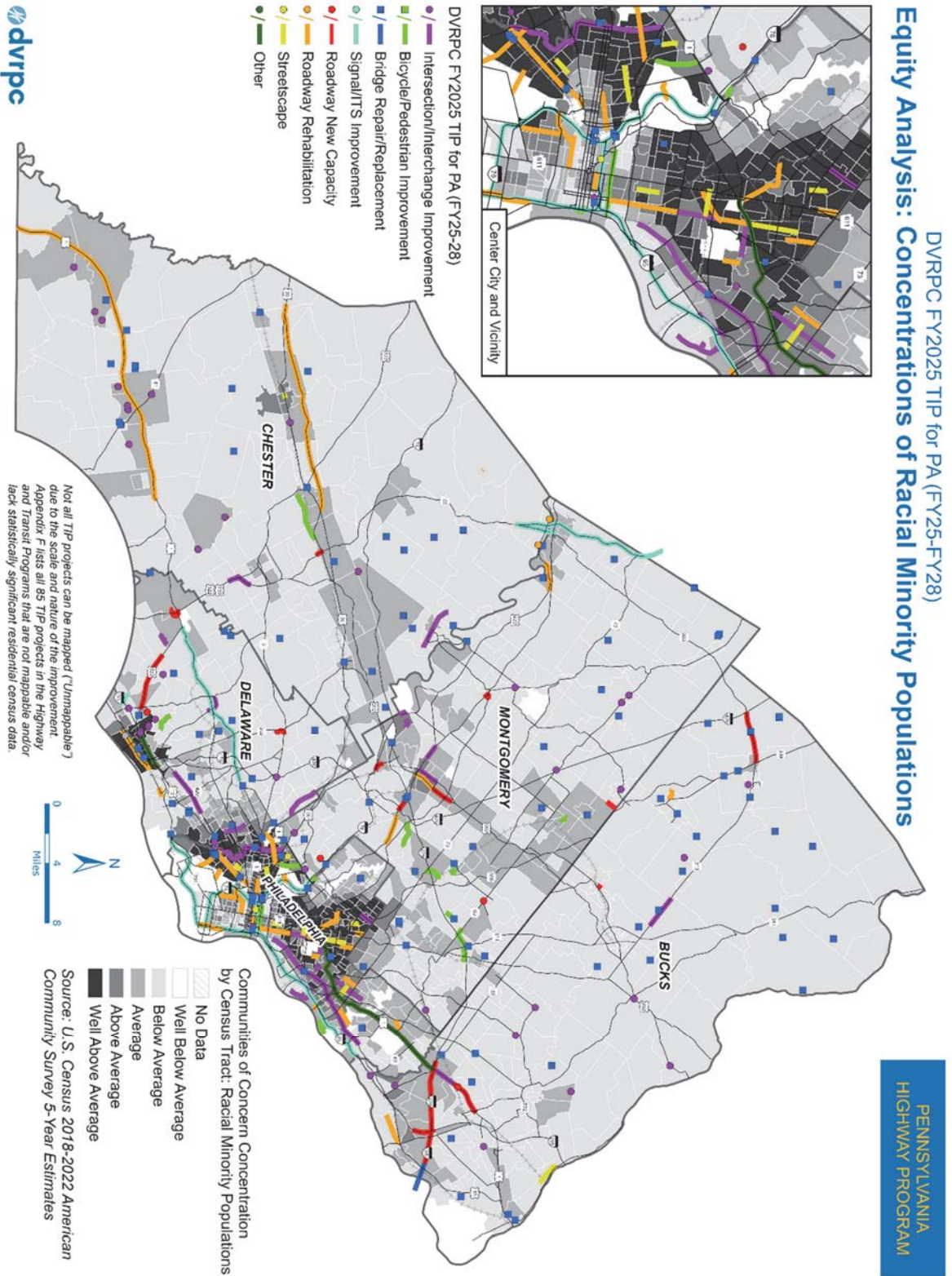


Figure F18: TIP “Highway Program” Projects and Concentrations of Ethnic Minority Populations

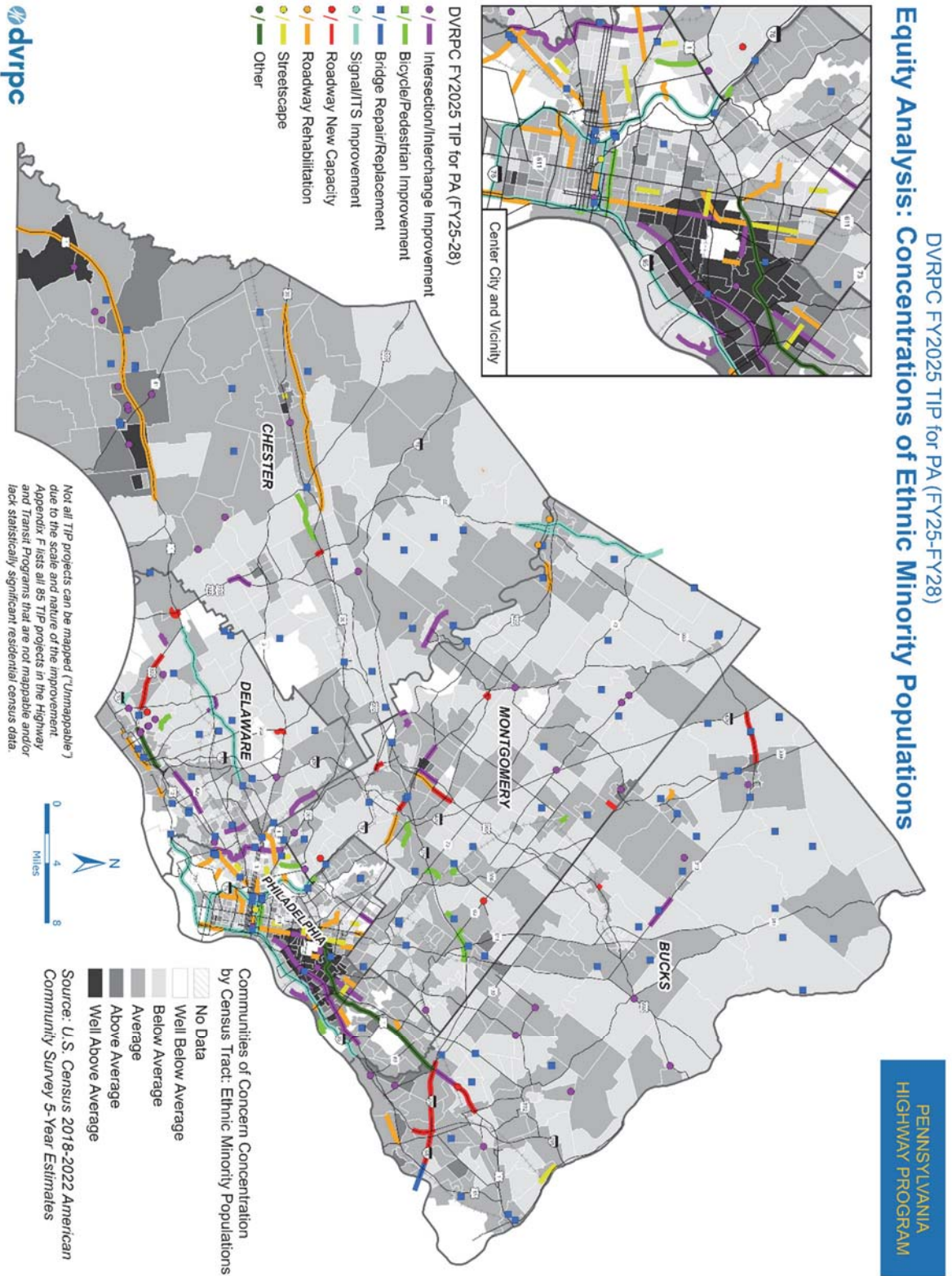




Figure F19: Transit Projects and Concentrations of Low-Income Populations

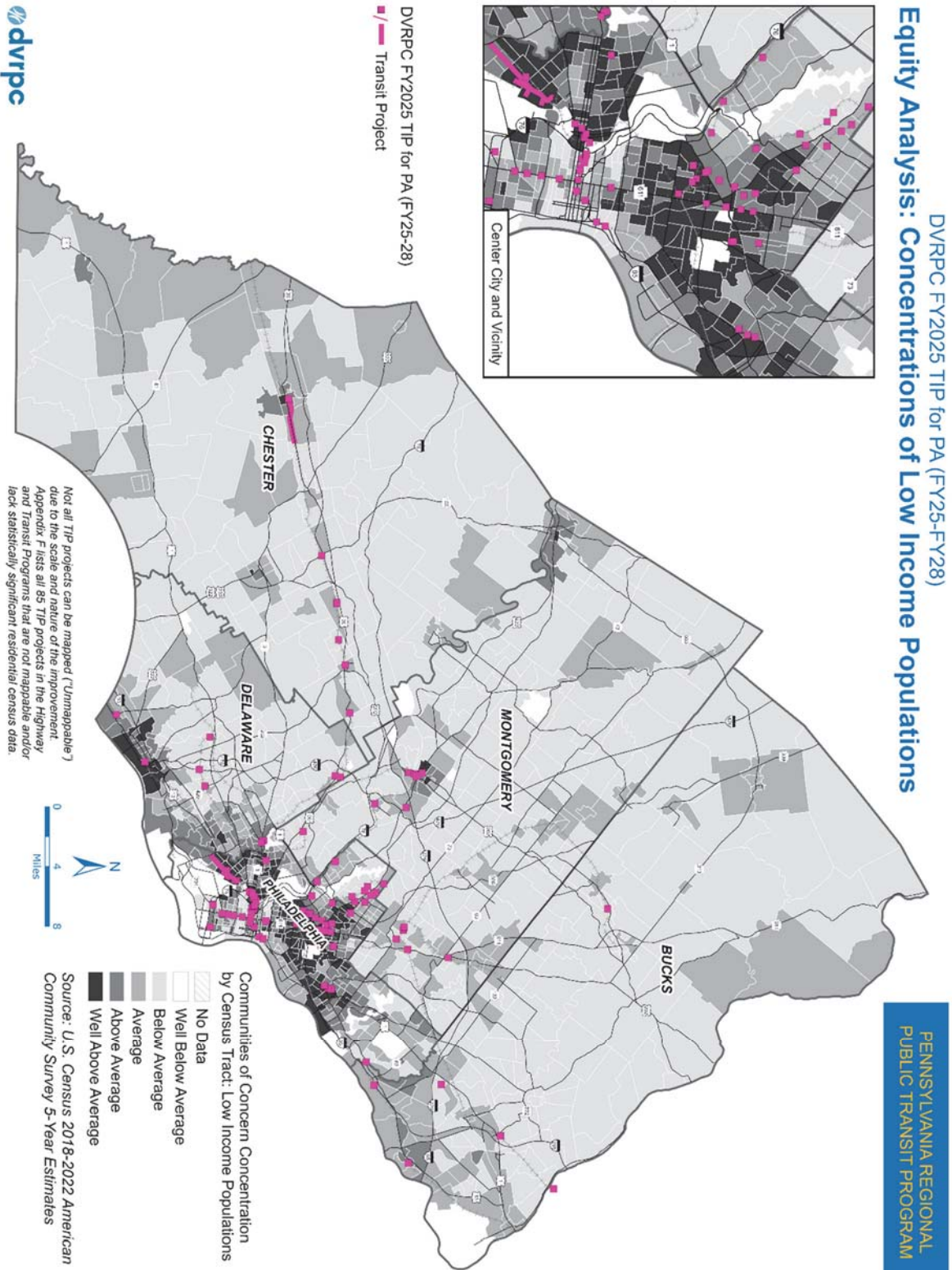


Figure F20: Transit Projects and Concentrations of Racial Minority Populations

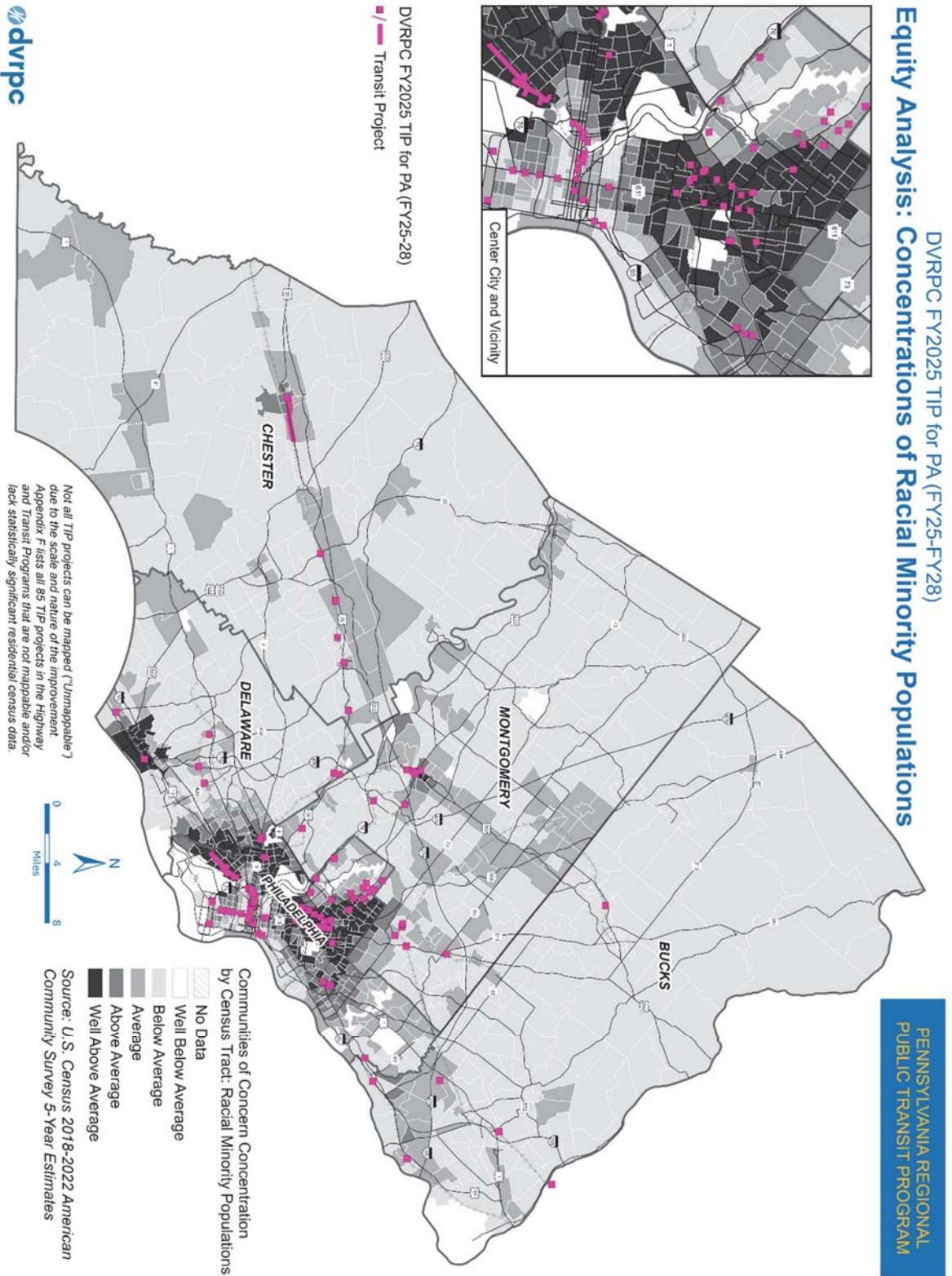




Figure F21: Transit Projects and Concentrations of Ethnic Minority Populations

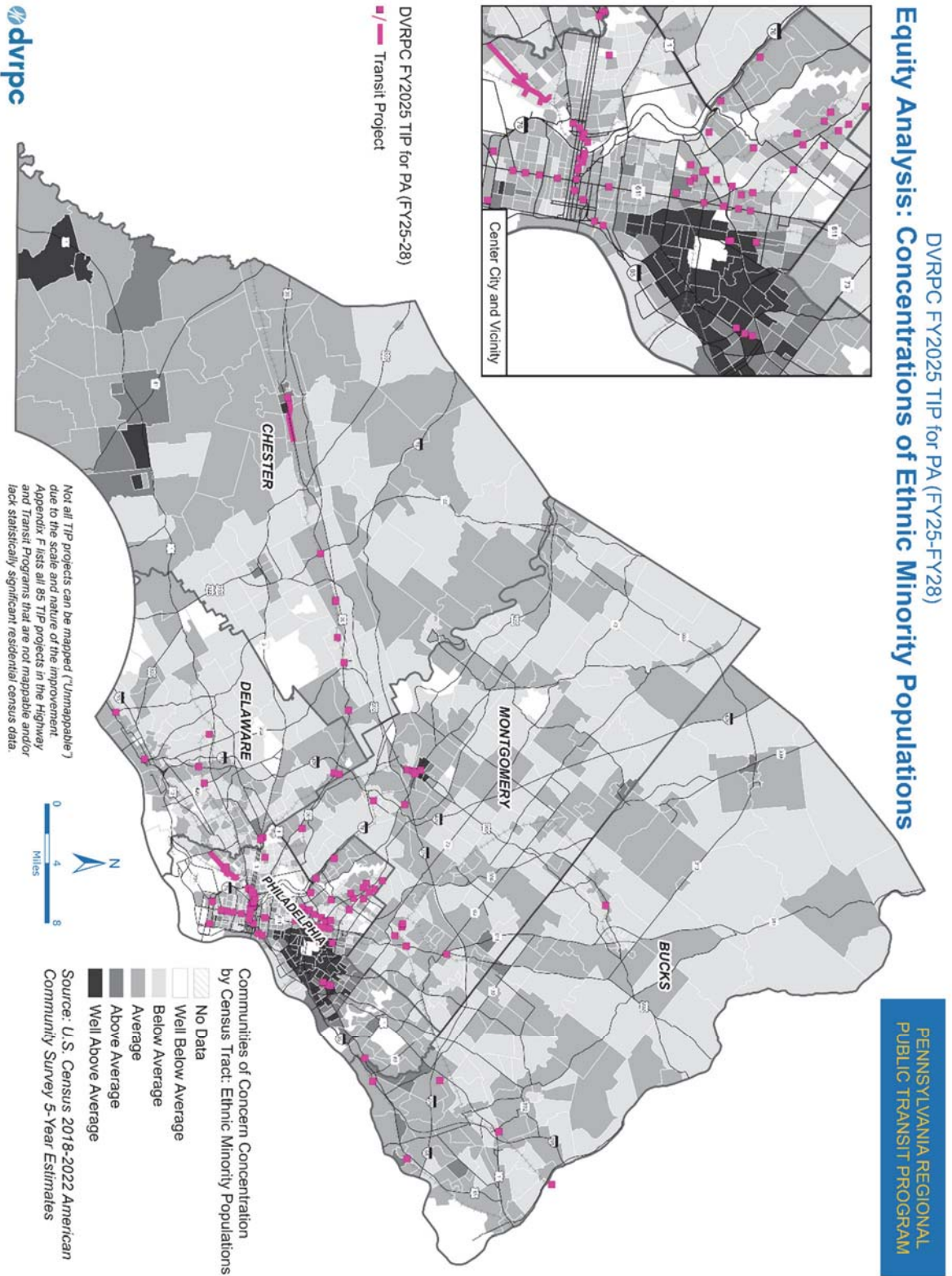


Figure F22: Candidate Projects and Concentrations of Low-Income Populations

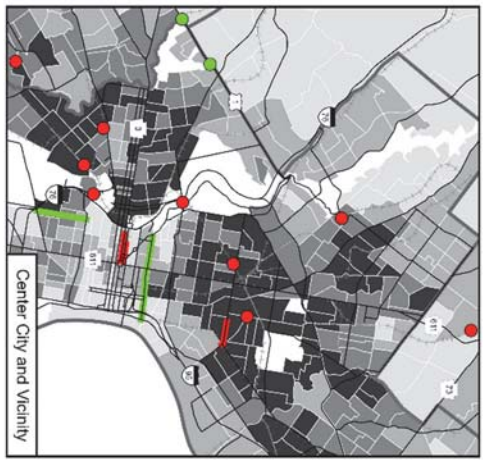
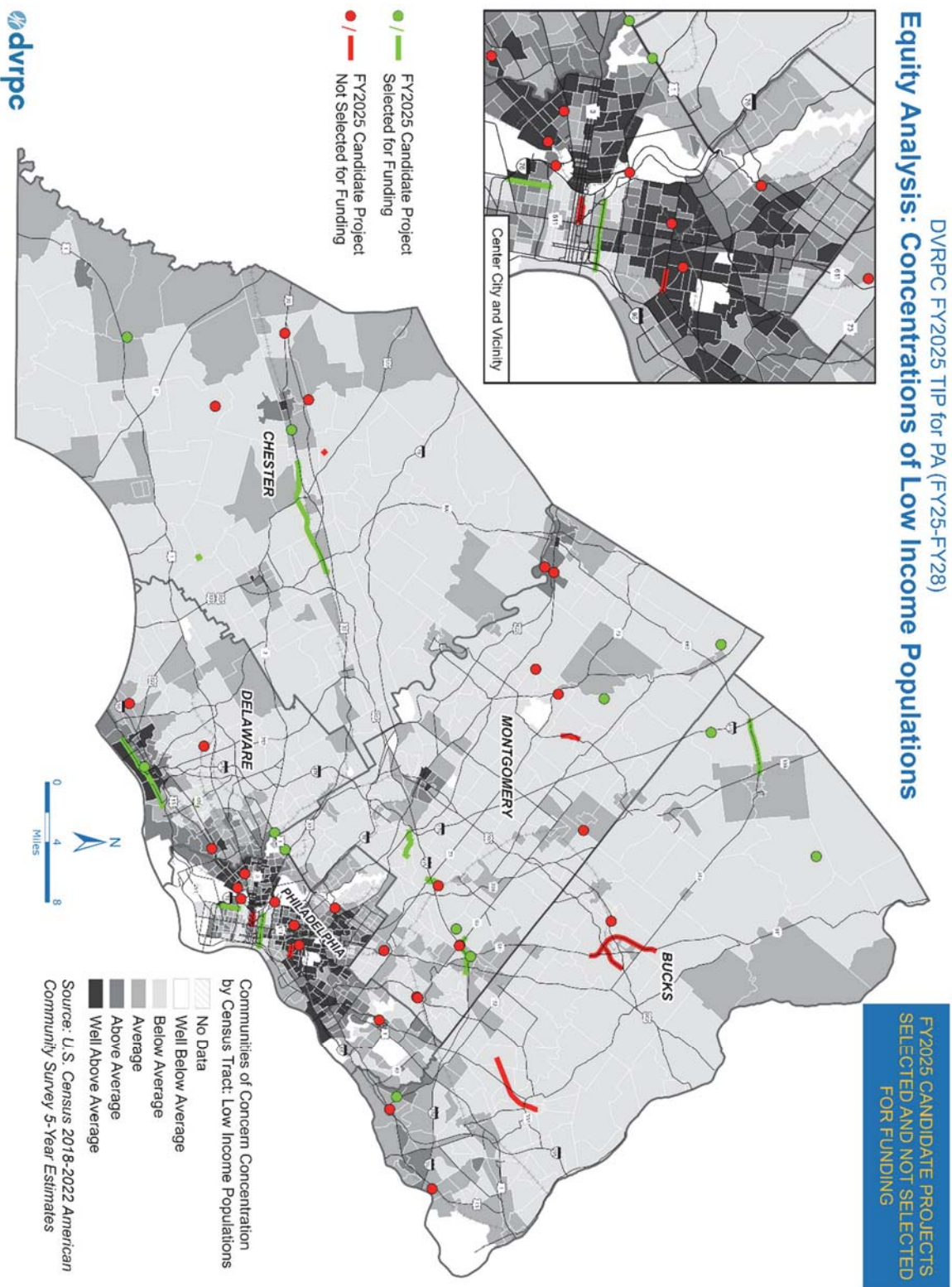




Figure F23: Candidate Projects and Concentrations of Racial Minority Populations

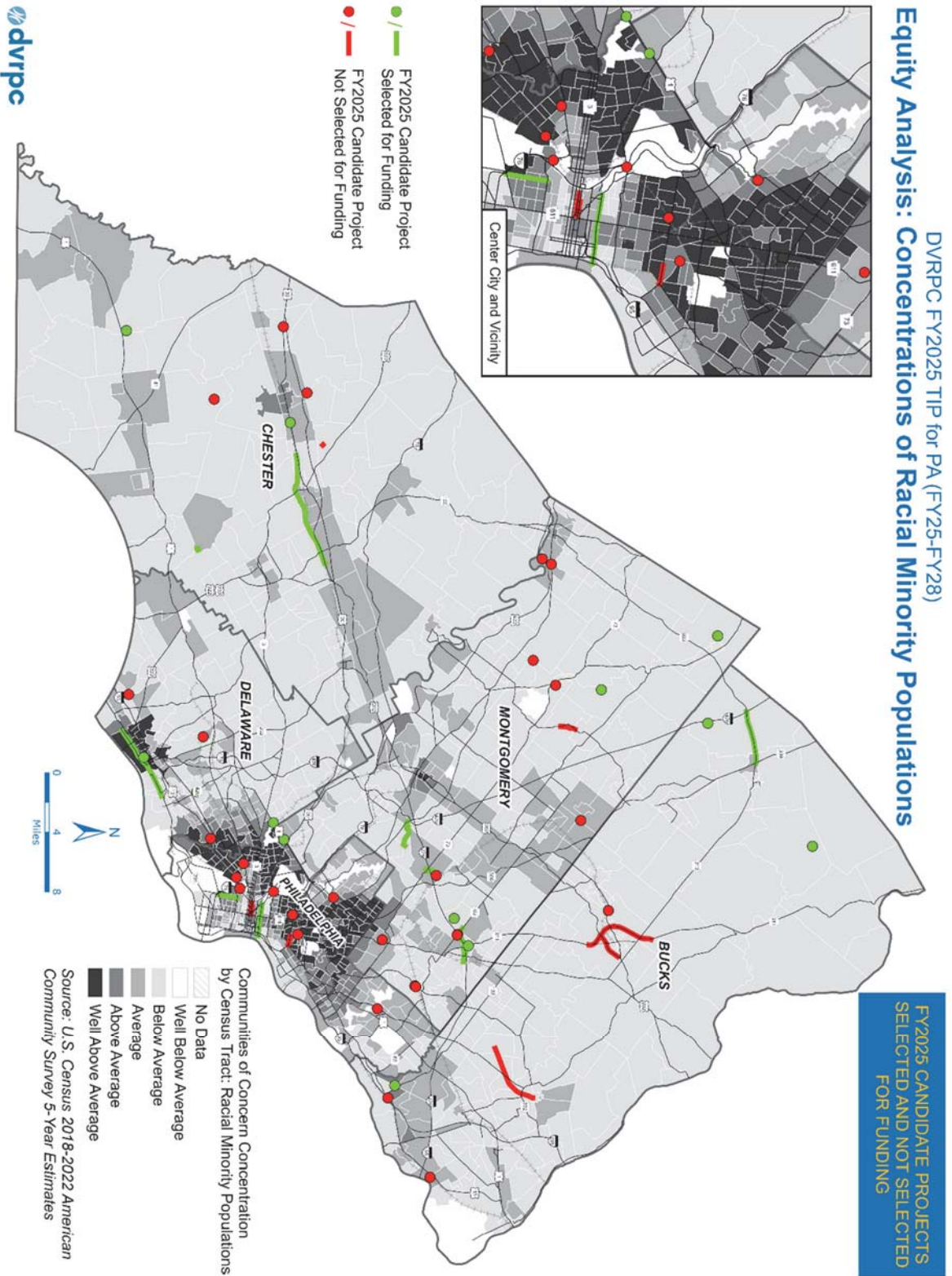
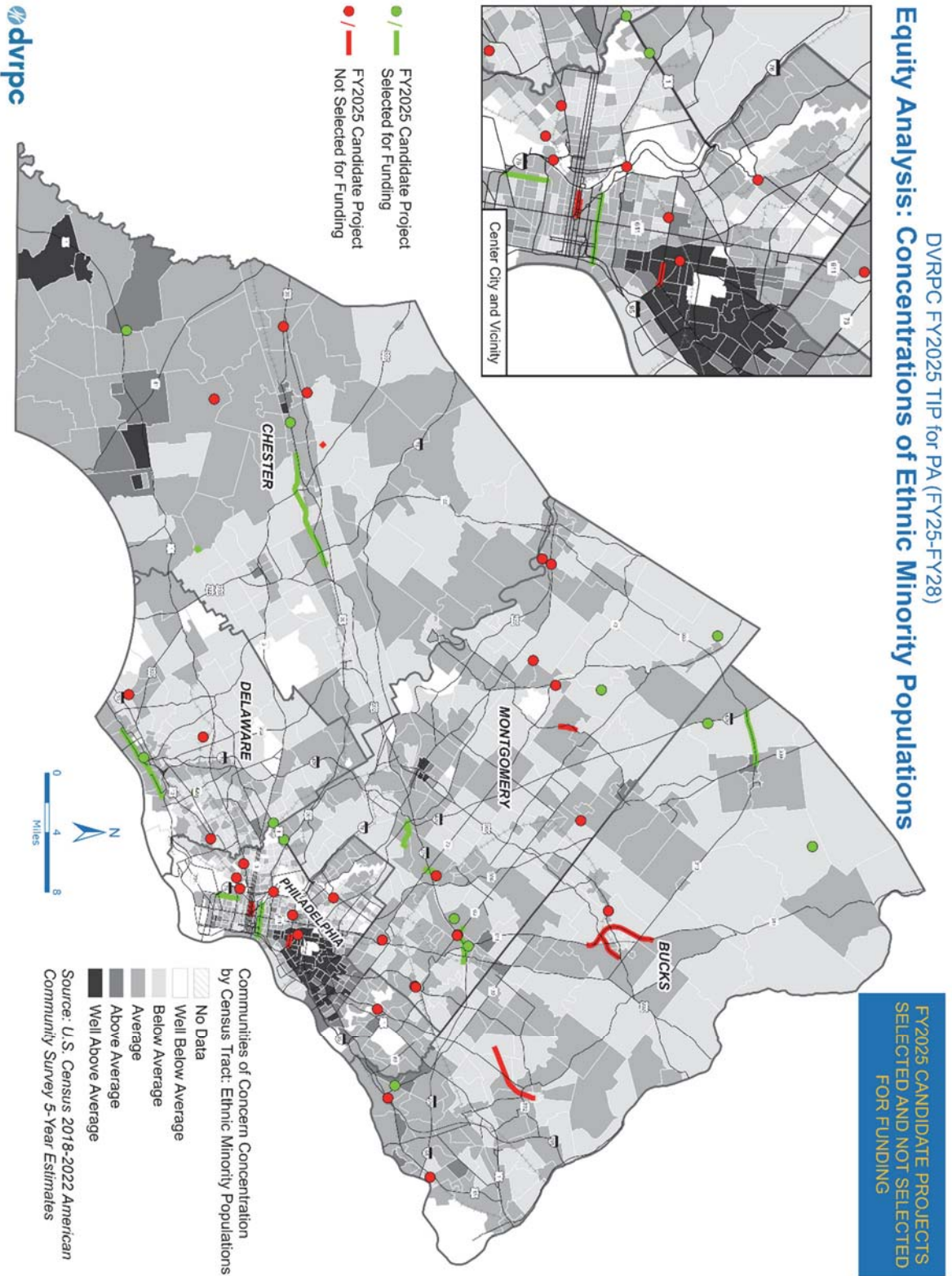
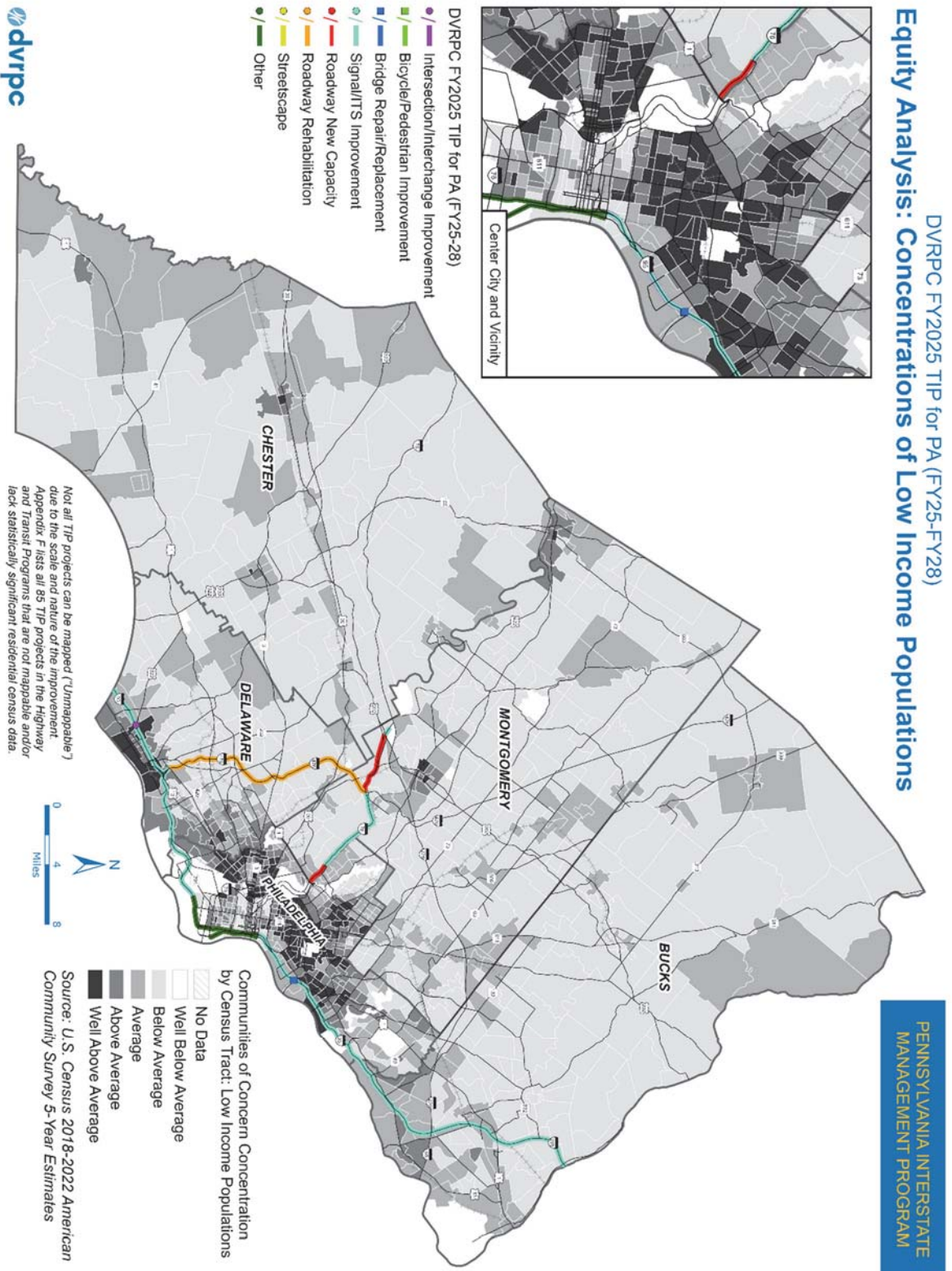




Figure F24: Candidate Projects and Concentrations of Ethnic Minority Populations

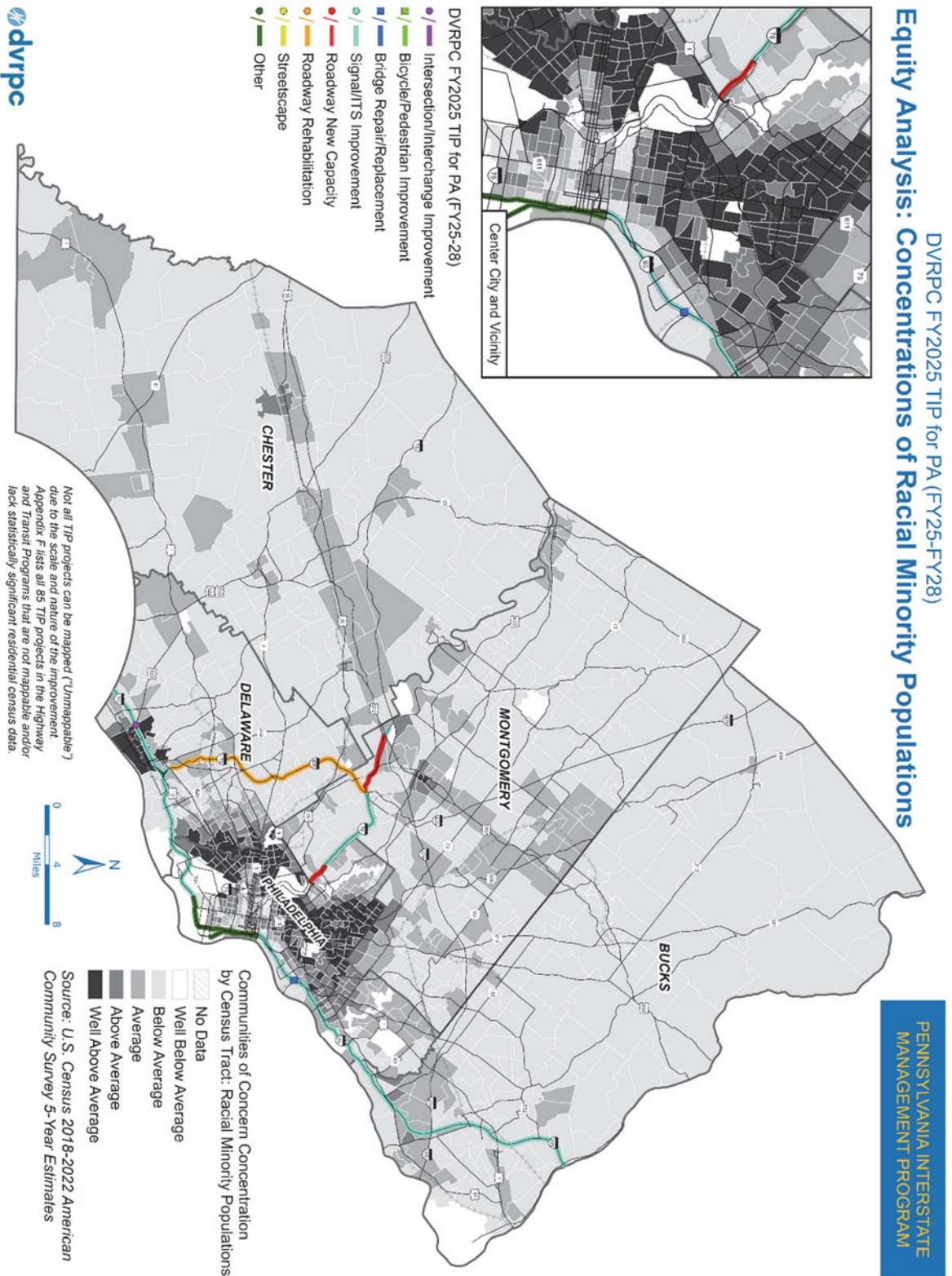


**Figure F25:** Pennsylvania Interstate Management Program Projects and Concentrations of Low-Income Populations



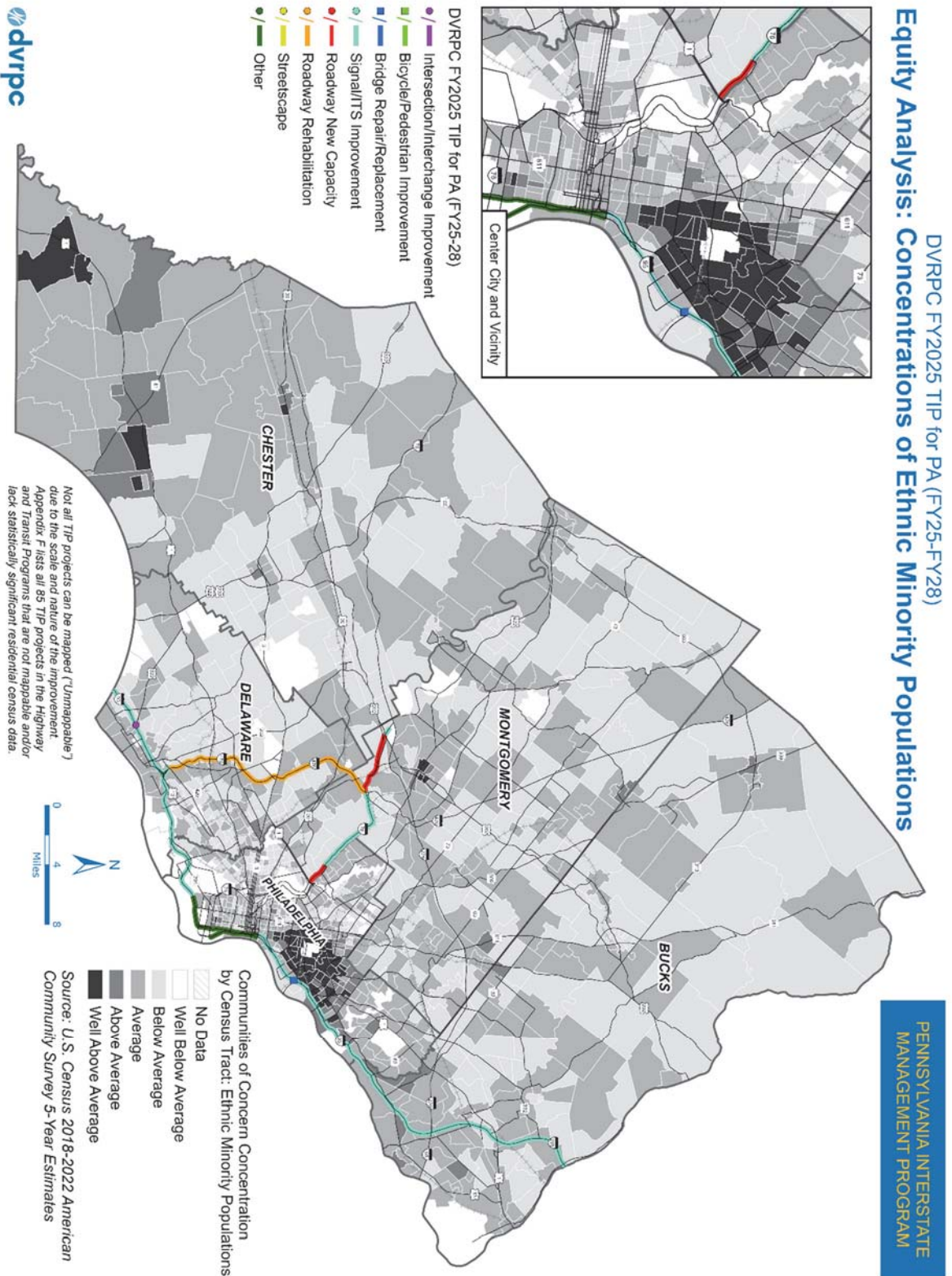


**Figure F26: Pennsylvania Interstate Management Program Projects and Concentrations of Racial Minority Populations**





**Figure F27: Pennsylvania Interstate Management Program Projects and Concentrations of Ethnic Minority Populations**



**Table F15:** List of Unmappable TIP Projects

| MPMS # | Project Name   | Project Type                          |
|--------|--|---------------------------------------|
| 16178  | Construction Management Tasks                                      | Other                                 |
| 16438  | PA 309, Connector Project - Phase I                                | Roadway New Capacity                  |
| 46959  | I-95 Design Review Manager   | Other                                 |
| 48201  | DVRPC Competitive CMAQ Program                                     | Other                                 |
| 51095  | ITS Program Integrator   | Signal/ITS Improvements               |
| 57902  | City Wide 3R Betterments Line Item                                 | Roadway Rehabilitation                |
| 57927  | Regional Safety Initiatives (HSIP) Line Item                       | Intersection/Interchange Improvements |
| 59935  | Capital Operating Assistance - Pottstown Area Rapid Transit (PART) | Transit Improvements                  |
| 59966  | Capital Asset Lease Program  | Transit Improvements                  |
| 59973  | Utility Fleet Renewal Program - Non Revenue Vehicles               | Transit Improvements                  |
| 60275  | Debt Service   | Transit Improvements                  |
| 60582  | Vehicle Overhaul Program   | Transit Improvements                  |
| 60599  | Paratransit Vehicle Purchase                                       | Transit Improvements                  |
| 60611  | SEPTA Key (Fare Collection System/New Payment Technologies)        | Transit Improvements                  |
| 60638  | Regional Rail Car and Locomotive Acquisition                       | Transit Improvements                  |
| 63406  | Retrofit for Bike Lanes and Shoulders                              | Bicycle/Pedestrian Improvement        |
| 64984  | Transportation Alternatives - Urban (TAU) Line Item                | Bicycle/Pedestrian Improvement        |
| 65109  | Transit Flex - SEPTA   | Transit Improvements                  |
| 75854  | District Program Management Services "A"                           | Other                                 |
| 75855  | District Program Management Services "B"                           | Other                                 |
| 79927  | Highway Reserve Line Item-STP                                      | Other                                 |
| 79929  | Bridge Reserve Line Item   | Other                                 |
| 79980  | STU Reserve Line Item  | Other                                 |
| 82087  | Systemic Intersection Improvement Program                          | Intersection/Interchange Improvements |
| 82088  | Systemic Vulnerable User Improvements                              | Intersection/Interchange Improvements |
| 82089  | Systemic Improvements: Wrong Way Countermeasures                   | Intersection/Interchange Improvements |
| 82091  | ITS Network Arch Tech Refresh Ph1 - PA 309 Hubs                    | Signal/ITS Improvements               |
| 82095  | Systemic Improvements: High Friction Surface Treatments            | Intersection/Interchange Improvements |

|        |   |                                |
|--------|---|--------------------------------|
| 82216  | NHPP Reserve Line Item                                  | Other                          |
| 83743  | ADA Ramps Line Item                                     | Bicycle/Pedestrian Improvement |
| 84318  | CAQ Reserve Line Item                                   | Other                          |
| 84457  | Signal Retiming Program                                 | Signal/ITS Improvements        |
| 90497  | Infrastructure Safety and Renewal Program               | Transit Improvements           |
| 90512  | SEPTA Bus Purchase Program                              | Transit Improvements           |
| 92182  | Expressway Service Patrol 13-16 Suburban Counties       | Signal/ITS Improvements        |
| 95739  | Transportation Capital Improvements                     | Transit Improvements           |
| 96223  | Philadelphia Signal Retiming                            | Signal/ITS Improvements        |
| 102105 | Municipal Bridge Line Item                              | Bridge Repair/Replacement      |
| 102275 | Study Line Item   | Other                          |
| 102565 | Track Improvement Program                               | Transit Improvements           |
| 102571 | Communications, Signals, & Technology Improvements      | Transit Improvements           |
| 102665 | Signal Upgrade Line Item                                | Signal/ITS Improvements        |
| 106648 | Sink Holes Line Item                                    | Roadway Rehabilitation         |
| 106649 | Stormwater Permits/Environmental Mitigation Design      | Roadway Rehabilitation         |
| 106654 | I-95 Transportation Demand Mgt (TMA)                    | Other                          |
| 109847 | ROW Divestment 6-0                                      | Other                          |
| 112525 | Citywide 3R 111   | Roadway Rehabilitation         |
| 112527 | Citywide ADA Ramps 3                                    | Roadway Rehabilitation         |
| 113257 | Outdoor Advertising Control                             | Other                          |
| 113813 | Group HB1 Bridge Rehabilitation                         | Bridge Repair/Replacement      |
| 115687 | I-95: Allegheny & Castor Ave Int.                       | Other                          |
| 115964 | Transportation Operations 2022-23                       | Other                          |
| 115965 | TAP Project Engineering/Management 2022-23              | Other                          |
| 115966 | CMAQ Project Engineering/Management 2022-23             | Other                          |
| 115968 | Travel Monitoring 2022-23                               | Other                          |
| 115969 | Regional GIS Coordination 2022-23                       | Other                          |
| 115970 | Air Quality Action Supplemental Services 2022-23        | Other                          |
| 115971 | Transportation Systems Management and Operations (TSMO) | Other                          |
| 115972 | I-95 Planning Assistance 2022-23                        | Other                          |
| 115973 | Enhance and Maintain Travel Forecasting Tools 2022-23   | Other                          |
| 115974 | District 6 Modeling Assistance 2022-23                  | Other                          |



|        |   |                                |
|--------|---|--------------------------------|
| 116807 | Citywide ADA Ramps 4  | Roadway Rehabilitation         |
| 117341 | Penn's Landing Project Development - Local  | Other                          |
| 117904 | PA Transportation and Community Development Initiative (TCDI) 2022-23                               | Other                          |
| 117912 | PA SHRPP 2022-23  | Other                          |
| 117928 | Travel Options Program (TOP) 2022-23  | Other                          |
| 117929 | PA Transportation Demand Management (TDM) Base Program 2022-23                                      | Other                          |
| 117930 | PA Transportation Demand Management (TDM) Base Program Administration and Commuter Services 2022-23 | Other                          |
| 117931 | Regional TOP Competitive Administration 2022-23   | Other                          |
| 117966 | Overbrook Education Center Slow Zone  | Bicycle/Pedestrian Improvement |
| 117997 | Bridge Investment Program Line Item   | Other                          |
| 118014 | 2023 Bridge Painting Pkge   | Bridge Repair/Replacement      |
| 118015 | CMAQ Flex for SEPTA Projects of Significance Line Item  | Transit Improvements           |
| 118036 | HSIP Supportive Line Item   | Other                          |
| 118494 | Eastern Delaware County Bikeway Implementation Plan (TOP)   | Bicycle/Pedestrian Improvement |
| 118496 | The Woodland Avenue Trolley Portal Complete Streets Project (TOP)                                   | Bicycle/Pedestrian Improvement |
| 119299 | Carbon Reduction Program Line Item  | Other                          |
| 119476 | I-76 Arterial Corridor ITS  | Signal/ITS Improvements        |
| 120934 | Bucks and Montgomery Counties ADA Ramps   | Bicycle/Pedestrian Improvement |
| 120938 | Chester and Delaware Counties ADA Ramps   | Bicycle/Pedestrian Improvement |
| 120940 | Philadelphia County ADA Ramps   | Bicycle/Pedestrian Improvement |
| 120942 | MS4 and 105 Remediation   | Streetscape                    |
| 120993 | North Philadelphia School Zones RAISE 23  | Bicycle/Pedestrian Improvement |
| 121366 | Resiliency and Sustainability Program   | Transit Improvements           |
| 121367 | Safe, Clean, and Secure Program   | Transit Improvements           |

Source: DVRPC, 2024.