



TUESDAY | 6.10.14

PA

SAFETY SYMPOSIUM
REDUCING INJURIES & SAVING LIVES
ON PENNSYLVANIA ROADS

Mark Alonge

North Central Highway Safety Network, Inc.

malonge@nchsn.org

570.628.2414

There is nothing wrong with today's teenager that twenty years won't cure. ~Author Unknown



buckleuppa.org




Pennsylvania Traffic Safety Enforcement Resource Center

This website is designed for law enforcement use. For general traffic safety information, visit [Just Drive PA](#).

[REIMBURSEMENTS](#)
[CONTACT NCHSN](#)

Saving Lives by Enforcing the Law

[Home](#) | [BUPA](#) | [Aggressive Driving](#) | [PATSN](#) | [Crash Records](#) | [Impaired Driving](#)

 BUPA Buckle Up Pennsylvania Dedicated to raising the seat belt use rate in Pennsylvania	 PAADEEP PA Aggressive Driving Enforcement and Education Program Dedicated to reducing aggressive driving behaviors in Pennsylvania	Impaired Driving Home of the North Central Regional DUI Enforcement Program
 Traffic Safety Ed. Traffic safety education curricula for students from kindergarten through grade 12	Crash Records Transitioning PA law enforcement agencies from paper to electronic crash recording	PATSN Home of North Central Highway Safety Network, Central PA Traffic Safety Network and Southwest Regional Traffic Safety Network

About Us

The Pennsylvania Traffic Safety Enforcement Resource Center is the hub for traffic safety programs run through the North Central Highway Safety Network in Pottsville, PA. This site is primarily for use by law enforcement and traffic safety partners, as well as people looking for information about Buckle Up PA's three [educational programs](#) for K-12 students.



Buckle Up PA

- Pennsylvania's Municipal Occupant Protection Enforcement and Education Project
- Funded through The Pennsylvania Department of Transportation
- Created in 1999 first Mobilization in 2000
- Presenting 3 Initiatives
 - ✓ Teen School Programs
 - ✓ Teen SB Enforcement
 - ✓ Nighttime SB Enforcement



OP Success

(Despite our Secondary Law)

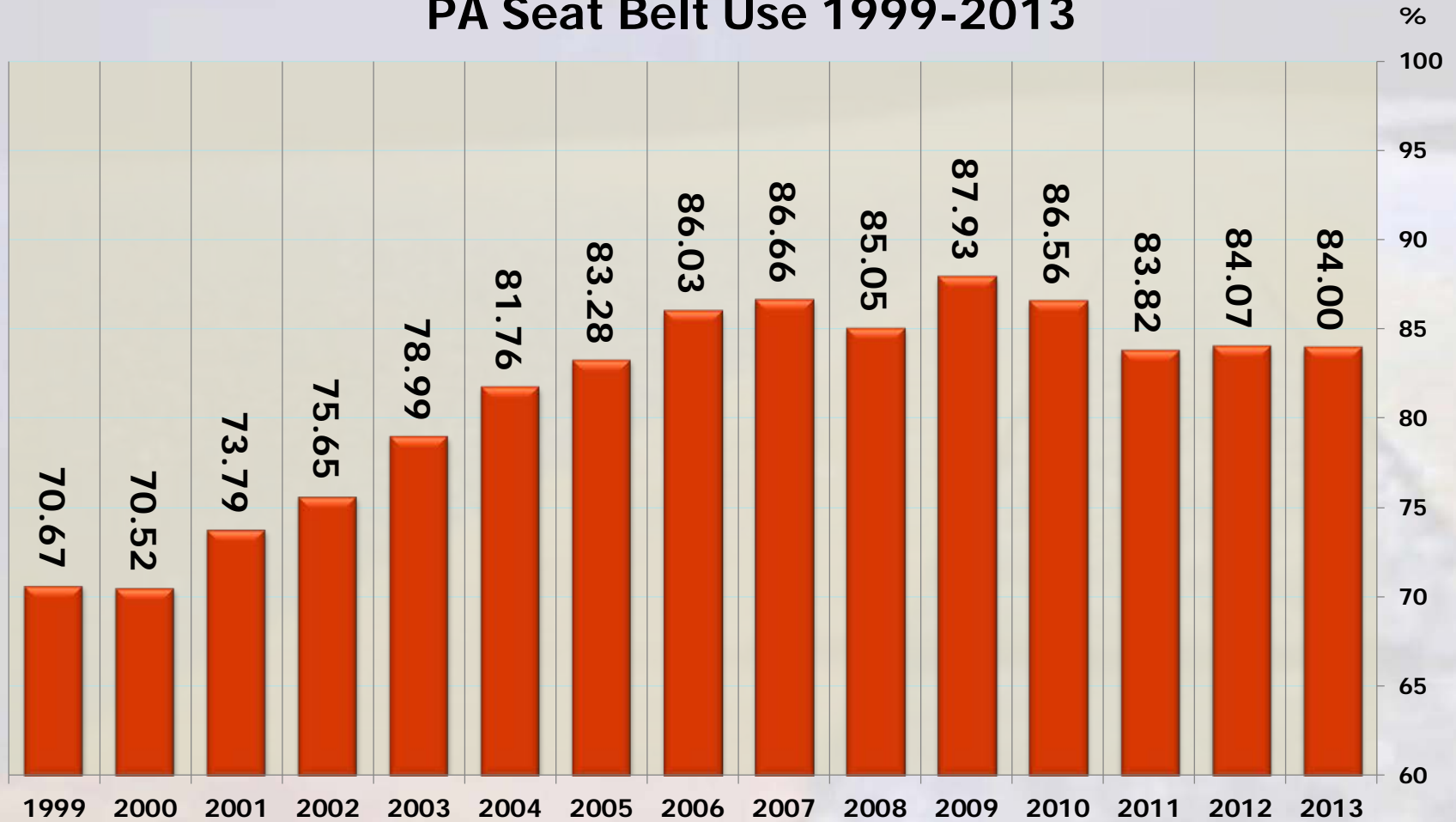
- Decline in OP Crashes and Fatalities
- Significant Reductions in Teen Crashes and Deaths

Need Work

- Observed Seat Belt Use
- Low OP Citations

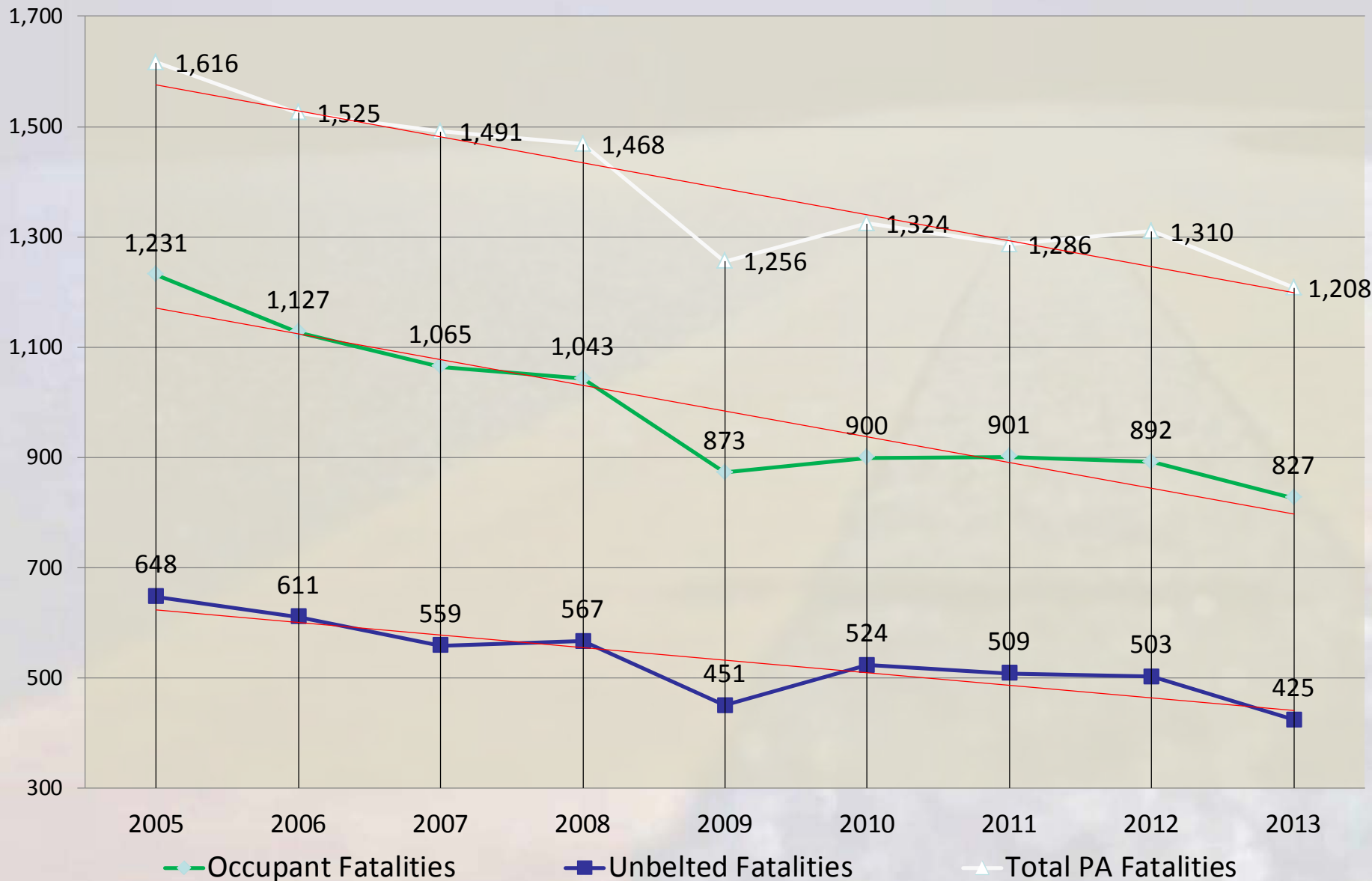
Seat Belt Use in PA

PA Seat Belt Use 1999-2013



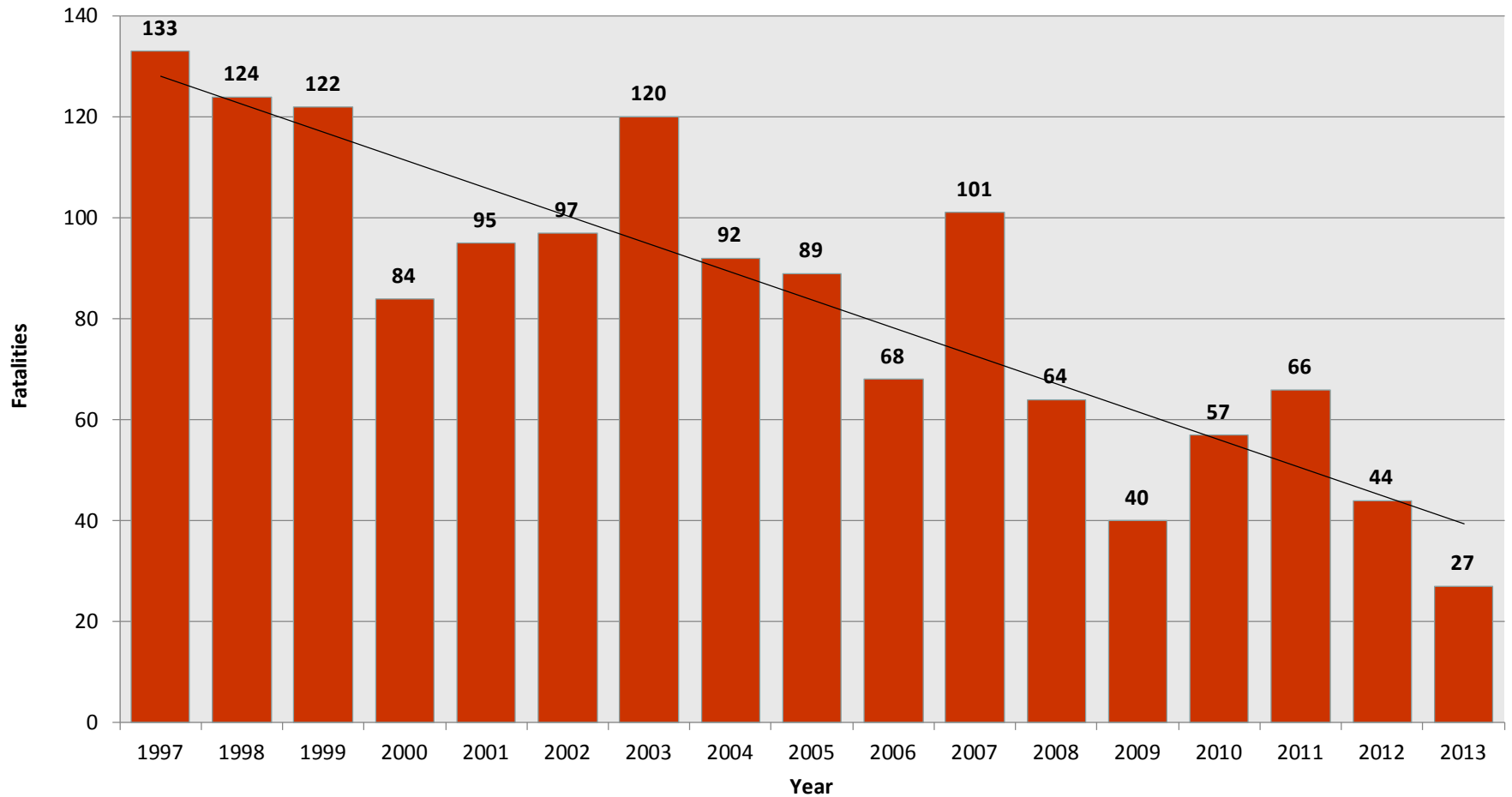
Total PA Fatalities- Occupant Only Fatalities - Unbelted Fatalities

Fatalities

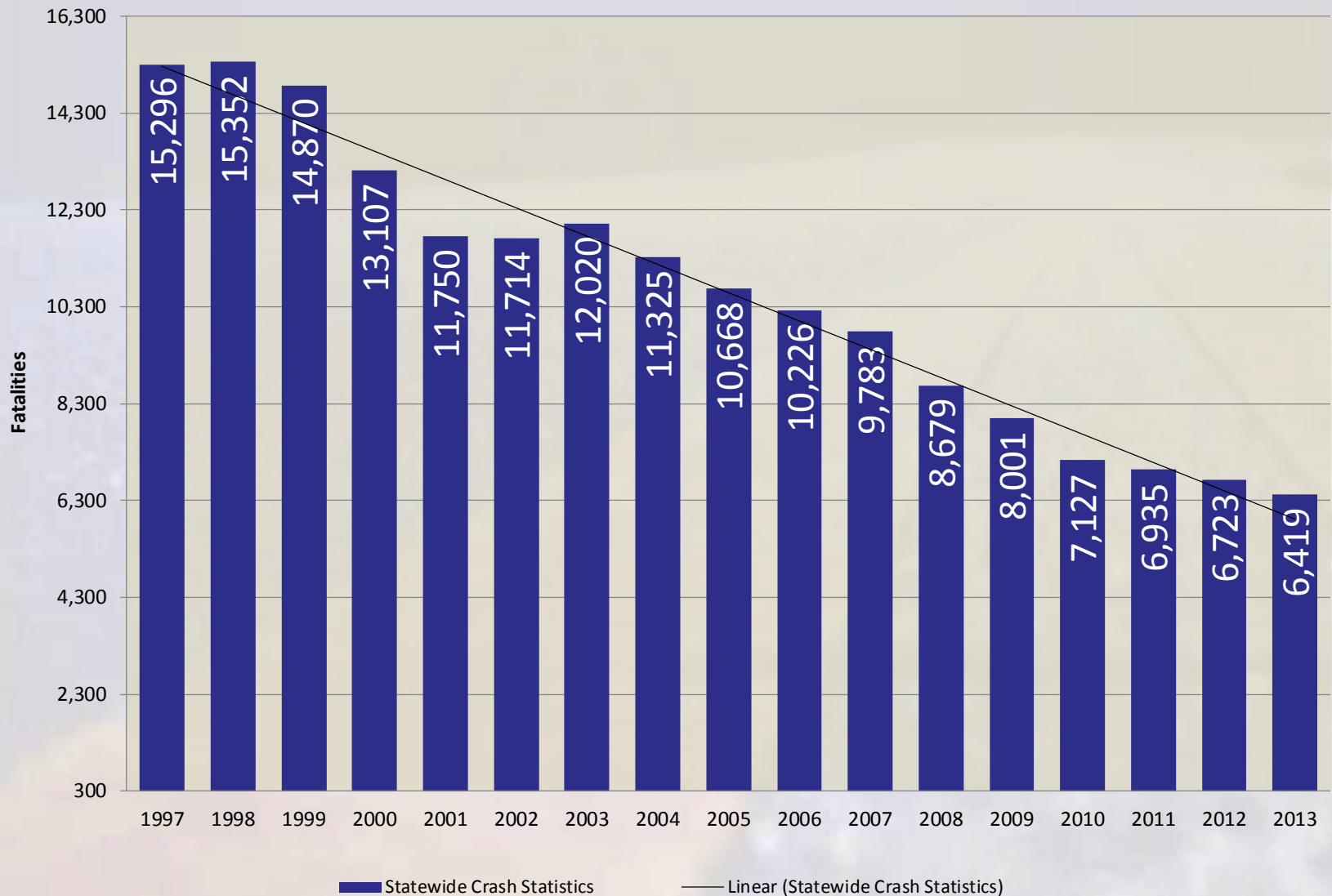


Young Driver Deaths

Fatalities in Crashes Involving a 16-17 Year Old Driver



Total PA Teen Crashes (16-17)



Working with Schools

- Survival 101
- 16 Minutes
- Back is Where It's At / Sit Back It's Elementary
- 17,000 Programs
- 700,000 students reached

Education Web Site

patrafficsafety.org
pasafetyedu.org



Pennsylvania K-12
Traffic Safety
Educational Programs

PRESENTER

[Home](#)

[Elementary](#)

[Middle/High](#)

[New Drivers](#)

[About](#)

[Contact](#)



Free Traffic Safety Presentations for Pennsylvania Students in Grades K-12

Effective Presentations by Local Law Enforcement

Pennsylvania law enforcement is pleased to present traffic safety curricula for students from kindergarten through grade 12. Created specifically to be presented by uniformed law enforcement officers, these programs put students and law enforcement in the same room to discuss the importance of being safe and secure when riding in or driving a vehicle.

The presentations are tailor-made for students at elementary and secondary levels. The elementary program focuses mainly on the proper seats for age, weight and height, seat belt use and the importance of children riding in the back seat until age 13. Pedestrian and school bus modules also are available. The secondary program dives deeper into unsafe behaviors like speeding, DUI and distracted driving. It also cements the seat belt message for older children and teens. This program is available in versions for middle and high school. Finally, the 16 Minutes program is for students

Schedule a Presentation

We'll match you with a participating law enforcement agency in your region and set up the program.

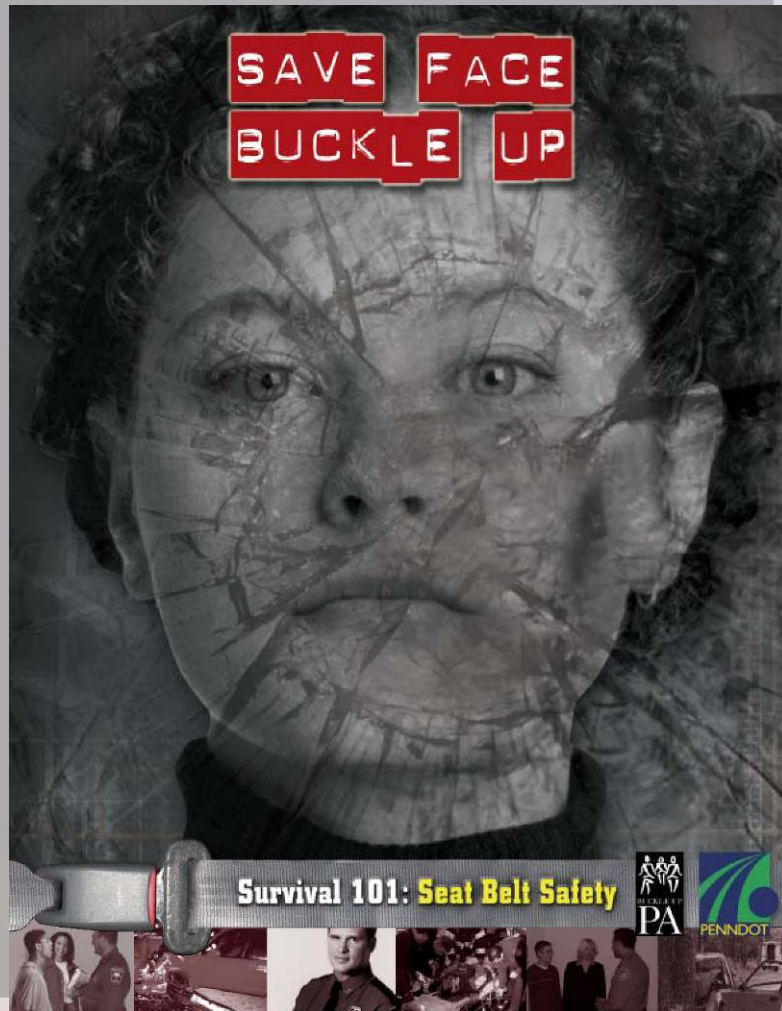
[CONTACT US](#)

or call **570-628-2416** to learn more.

Pennsylvania's Traffic Safety Educational Programs are Sponsored by These Agencies:

SURVIVAL 101

A Student's Guide to Staying Alive

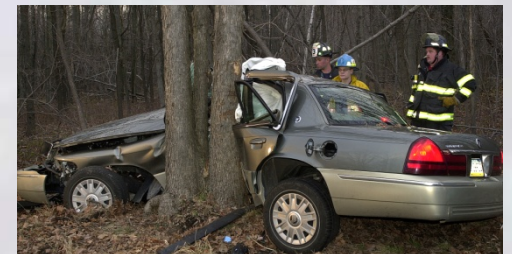


Survival 101

- Created 2003 Updated 2006 and 2010
- 2012-2013 school year 406 Survival presentations reaching 25,426 students statewide.

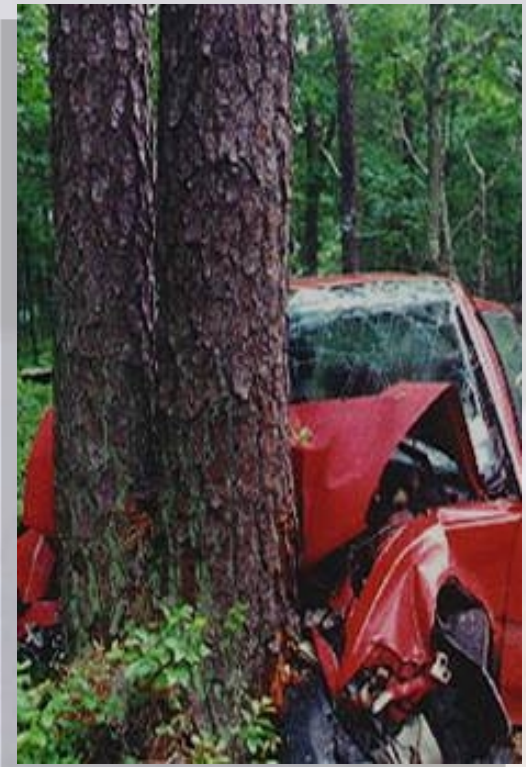


Survival 101: Is a police-driven curriculum designed to encourage appropriate decision making among middle and high school students .



6th–12th Grades

- Choices as a Passenger
- Crash Dynamics
- Occupant Protection
- Inexperience
- Preparing to Drive
- Distracted Driving
- Impaired Driving
- Drowsy Driving



“16 Minutes”



16 Minutes-- a unique intervention program that focuses on selected high risk behaviors that lead to youth crashes, injuries and deaths. “Sixteen Minutes of Your Life” or “Sixteen Minutes” involves a one on one or a small group meeting with a police officer, the month the student turns 16.



Fifteen turning Sixteen

- Perception and Reality behind the wheel
- Driving characteristics, and how seat belts save lives
- "CIOT" and consequences
- Driving is a privilege, not a right

How Effective?

- Significant improvements:

Elementary Schools	13 %
Junior High Schools	17%
High Schools	20%

- Back seat positioning for elementary school children (12 years-of-age and under) improved by 23 percentage points.
- If drivers were belted, 90 percent of Tweens were belted

Teen Mobilization

- The 3rd Teen Seat Belt Mobilization was completed on March 3rd through March 21, 2014.
- 122 Law Enforcement Agencies.
- 180 secondary schools.
- A total of 32,432 direct enforcement contacts were completed.
- 1,962 seat belt citations were issued. This includes both primary and secondary citations.
- PA Announcement, 100,000 handouts, Informational site details and Campus Activities.



Teen Mobilization Surveys

LEA Grantees pre and post seat belt surveys.

- *175 surveys were completed.*
- *Seat Belt Use increase **11.3%**.*
(73.4% to 84.7%)



BUPA LELs completed Pre and Post Teen Mobilization SB surveys at 24 Secondary Schools 12 treatment and 12 control schools.

Seat belt use increased:

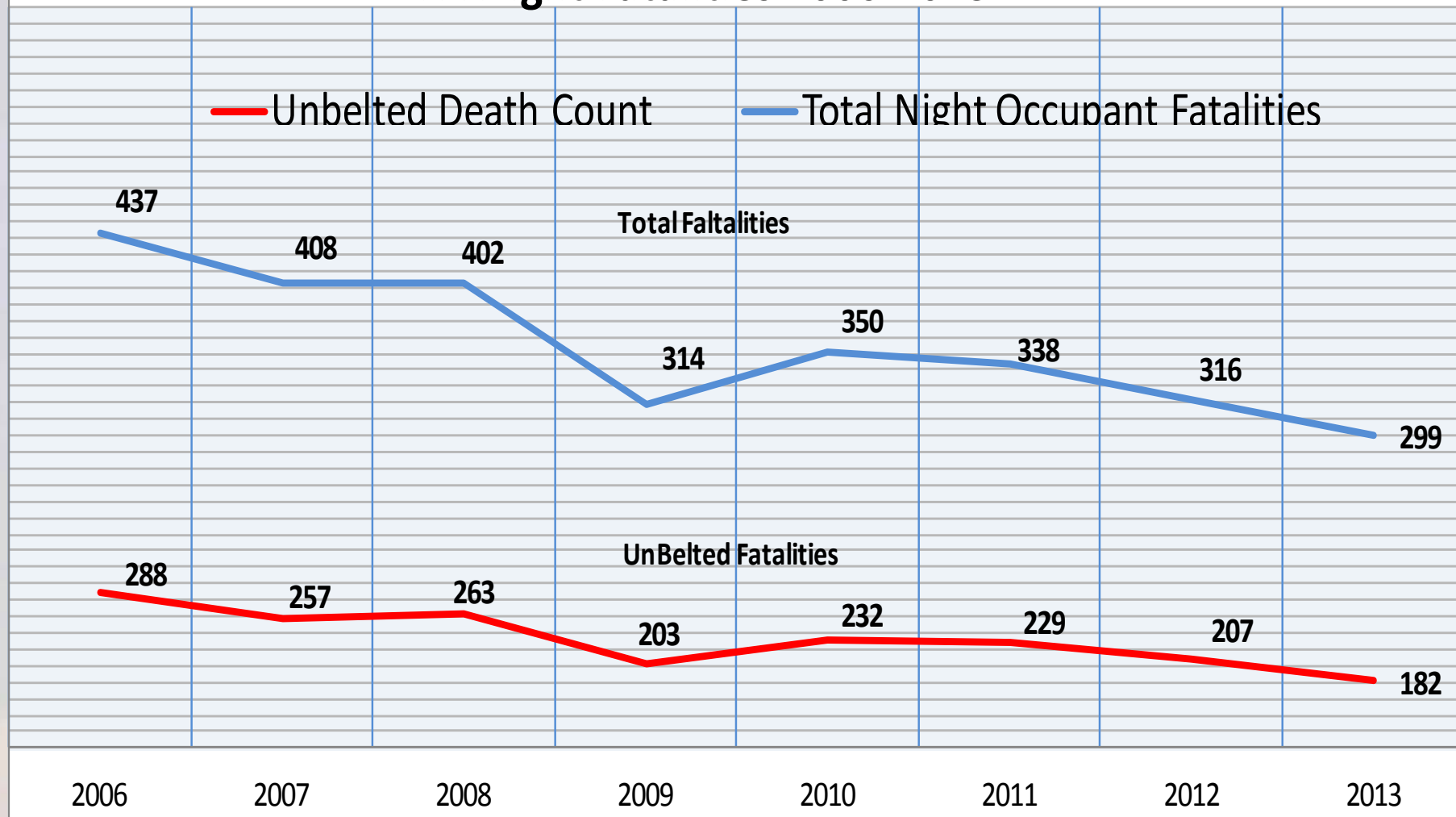
- *7% (73.7% to 80.7%) (treatment)*
- *3.7% from 69.9% and post survey 73.7% (control)*

Increasing Seat Belt Use At Night



Nighttime Belt Use

PA Night Fatalities 2006-2013



Converting the Remaining 16%

Converting the remaining 16 % will require enforcement, education, public information and more enforcement.

This group is not only the most resistant, but is also responsible for other high risk driving behaviors and crashes.



What Can We Do?

- *Pass a primary enforcement seat belt law.*
- *Make sure that seat belt laws apply to everyone in the car, not just those in the front seat.*
- *Ensure that fines for not wearing a seat belt are high enough to be effective.*
- *Make sure that law enforcement enforce all seat belt laws.*
- *Continue to support seat belt laws with visible police presence and awareness campaigns for the public.*
- *Educate the public to make seat belt use a norm*

Questions ?

