

# DVRPC's Sidewalk Inventory Project

Kim Korejko  
Manager, Data Coordination  
Updated March 2018

# Three Components

1. Regional GIS Dataset
2. Online public engagement platform
3. Pedestrian Facilities and Planning Portal

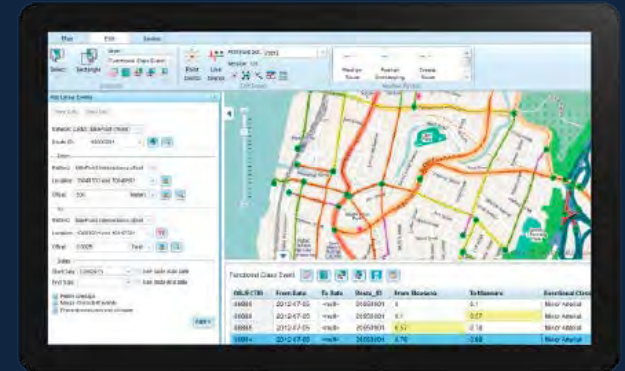
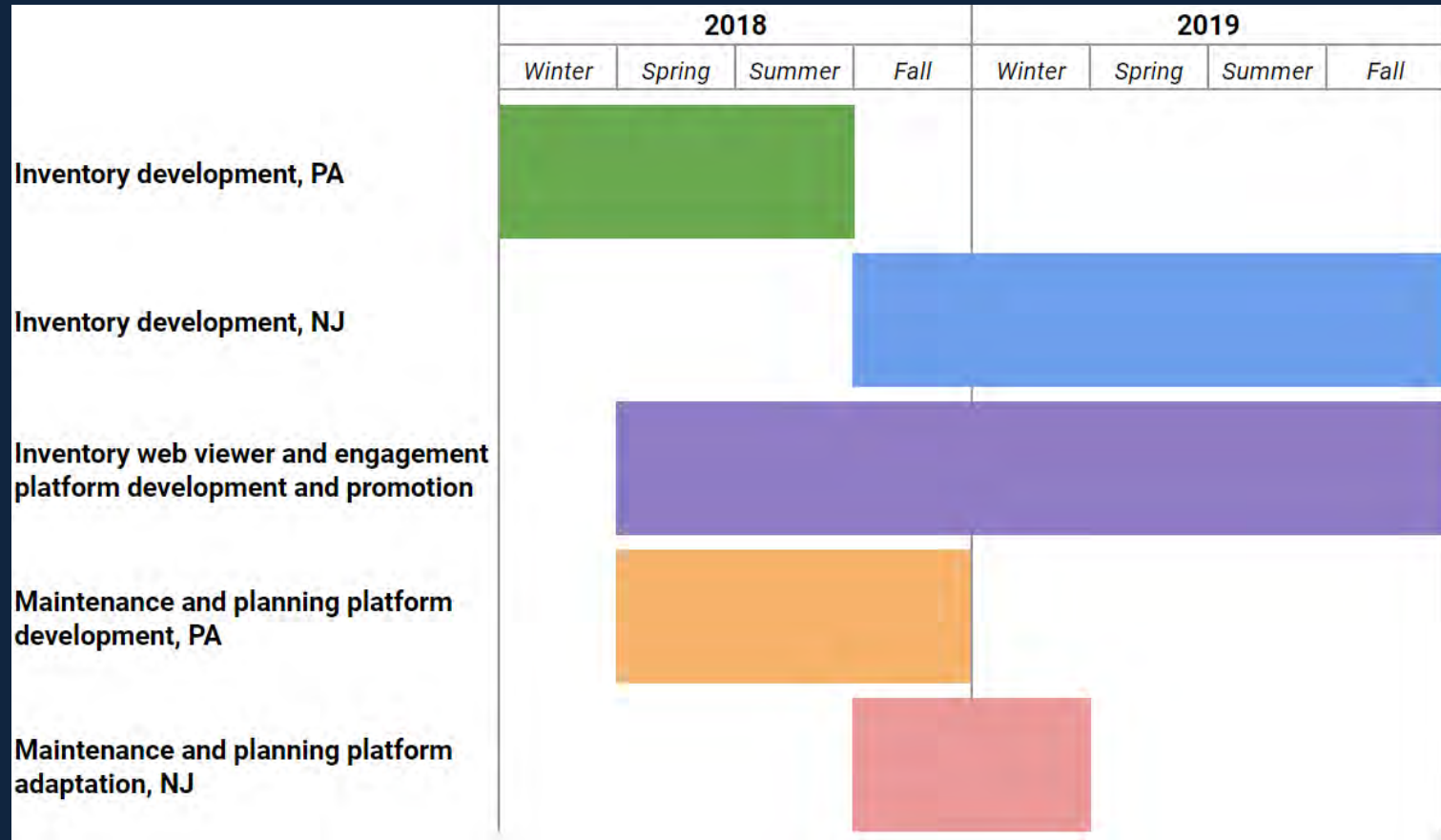


Photo credit:  
Mark Mathosian - <https://www.flickr.com/photos/markgregory/28197098672>

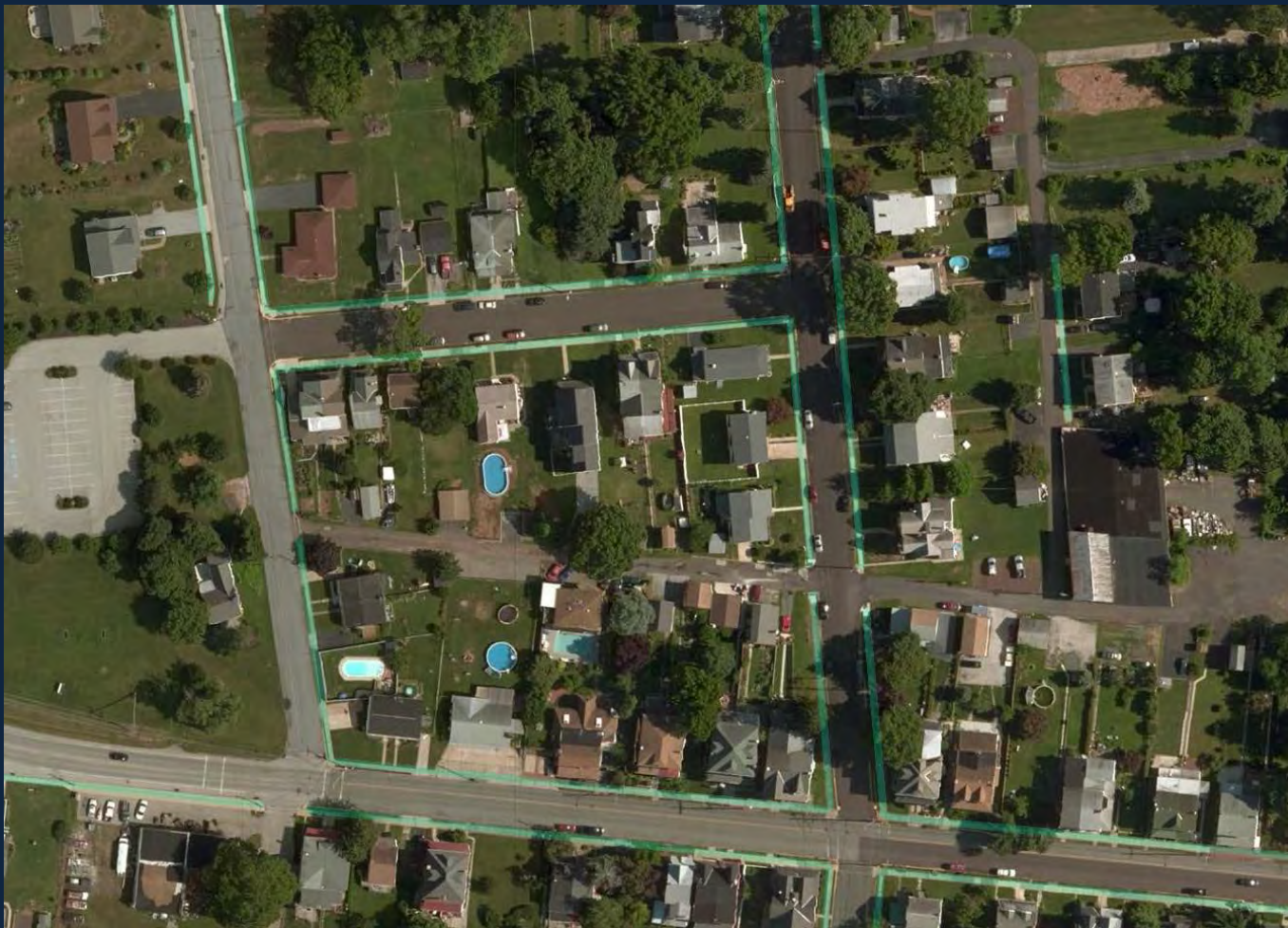
# Timeline



**To assist with planning efforts to help communities in the region become more pedestrian-friendly and accessible, DVRPC is developing a new **regional sidewalk inventory** and an **online platform** for a shared regional conversation on local and regional walkability.**

# Examples of Sidewalk Inventories

Chester County, PA



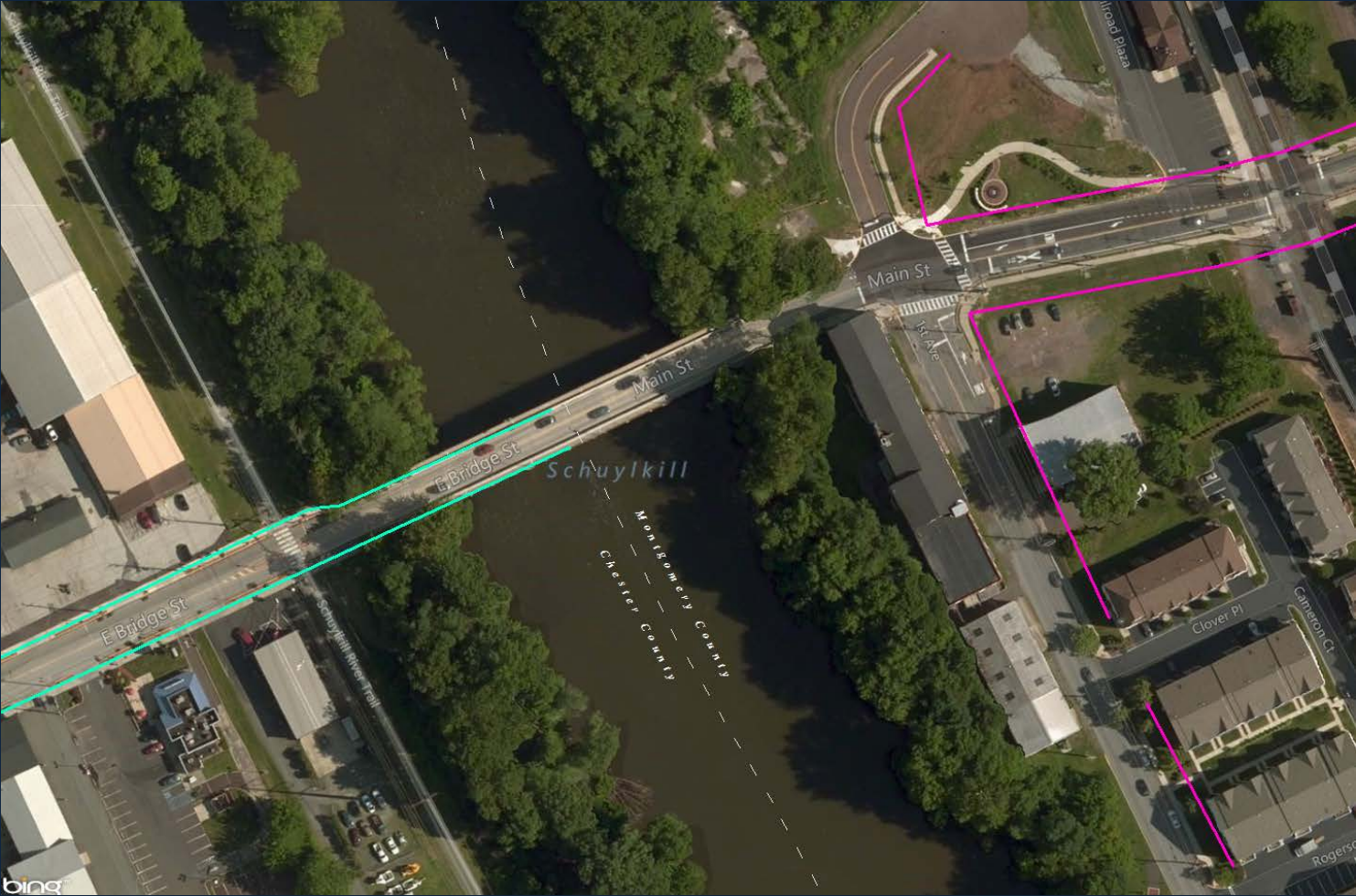
# Examples of Sidewalk Inventories

## Montgomery County, PA



# Examples of Sidewalk Inventories

In our region: Where the sidewalk ends...



# What do stakeholders want in a sidewalk inventory? SURVEY RESULTS

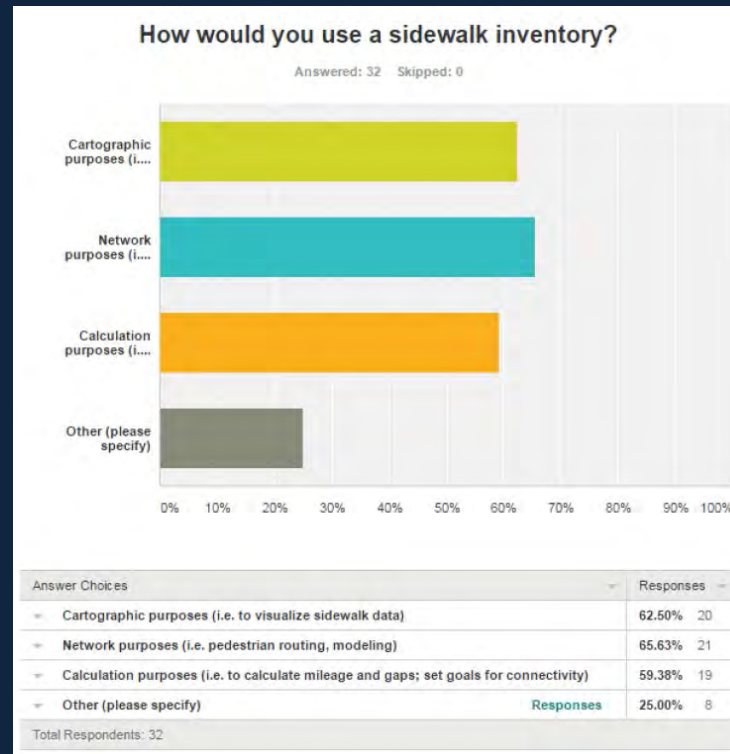
We surveyed DVRPC staff in Winter 2017 and received 32 responses

We surveyed municipalities/related organizations in Summer 2017 and received 140 responses



# SURVEY RESULTS

Staff responses



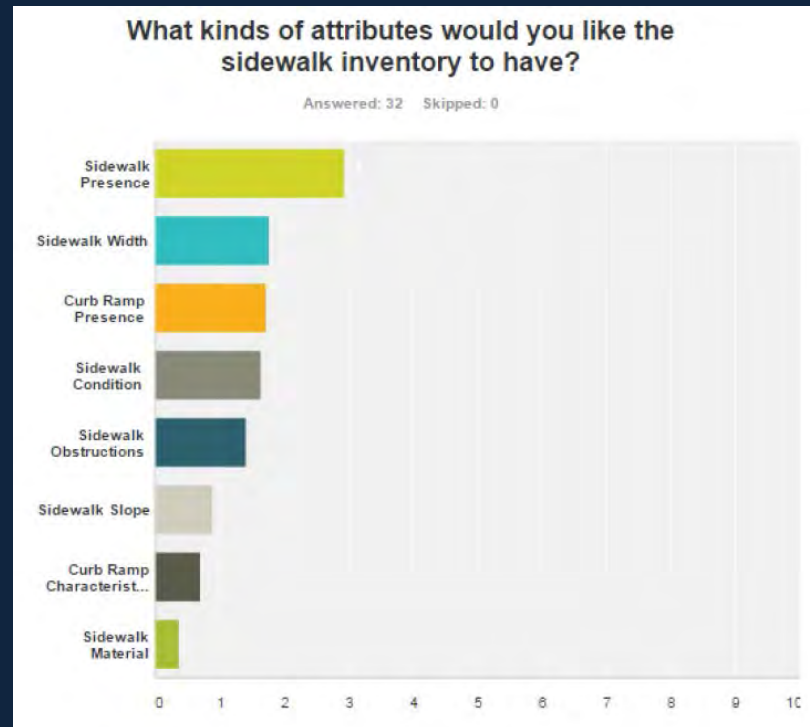
Municipality responses

8. If you had access to a sidewalk inventory, what would you use it for? (Check all that apply.) **{136 responses}**

- Asset management **42%**
- Cartographic mapping (i.e. to visualize sidewalk data) **51%**
- Network routing (i.e. pedestrian routing, modeling) **57%**
- Calculation purposes (i.e. to calculate mileage and gaps; set goals for connectivity) **60%**
- Other **16%**

# SURVEY RESULTS

Staff responses



9. What attributes of a sidewalk inventory are most important to you? (Check all that apply.) {140 responses}

- Sidewalk Presence **83%**
- Sidewalk Condition **70%**
- Sidewalk Obstructions **47%**
- Sidewalk Width **47%**
- Sidewalk Material **29%**
- Sidewalk Slope **24%**
- Curb Ramp Presence **59%**
- Curb Ramp Characteristics (Material, Type, Slope) **29%**
- Other **10%**

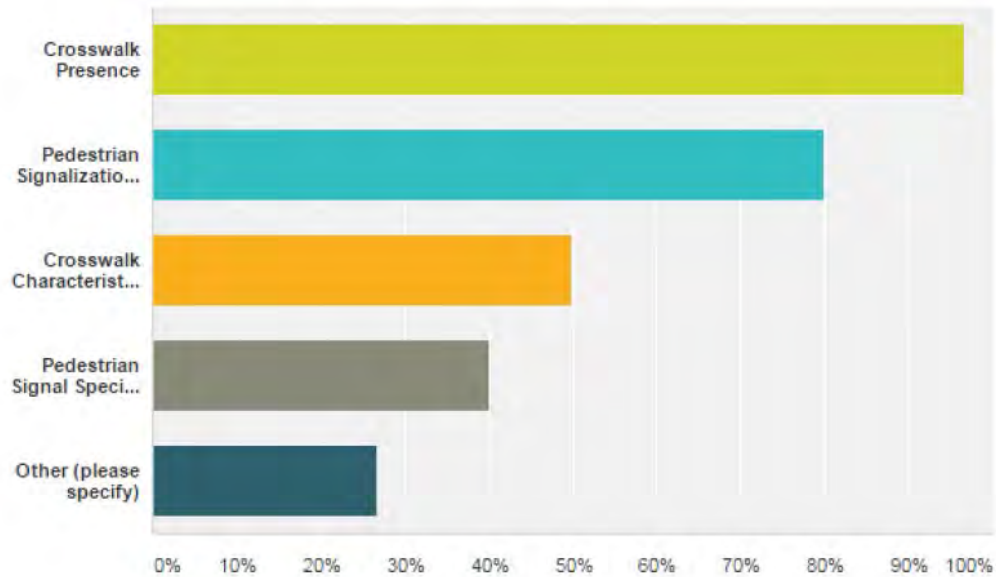
Municipality responses

# SURVEY RESULTS

Staff responses

For future reference, what additional pedestrian facility data would like to have?

Answered: 30 Skipped: 2



Answer Choices	Responses
▼ Crosswalk Presence	96.67% 29
▼ Pedestrian Signalization Type	80.00% 24
▼ Crosswalk Characteristics (Material, Type, Width)	50.00% 15
▼ Pedestrian Signal Special Features	40.00% 12
▼ Other (please specify)	<a href="#">Responses</a> 26.67% 8

Total Respondents: 30

# DVRPC's Sidewalk Inventory

## THE PLAN

- **Select a consultant to create seamless, standardized GIS dataset of sidewalks in the DVRPC region**
- **Build from existing networks**
- **Create new features where datasets don't exist**
- **Includes the following pedestrian facilities**
  - Crosswalks
  - Multipurpose trails and other non-sidewalk pedestrian facilities
  - Curb ramps/ADA pedestrian facilities

FY18: DVRPC's PA Counties

FY19: DVRPC's NJ Counties

# What we'd like to do with the regional sidewalk inventory

- Continue to improve the inventory
- Share the product with our planning partners through an online platform

# Pedestrian Facilities and Planning Portal

This portal will provide a space to allow collaboration between local and regional planning partners working on pedestrian improvements. This secure online interface will (1) provide access to and accommodate maintenance of the regional sidewalk inventory by local entities and (2) to allow local and regional planning partners to share their pedestrian facility priorities (such as those identified in their comprehensive/master plans or those for which they seek grant funding) on an interactive map. Work will begin in Pennsylvania to support PennDOT Connects, and later be adapted as the sidewalk inventory extends into our New Jersey counties.

# Questions?

Kim Korejko  
[kkorejko@dvrpc.org](mailto:kkorejko@dvrpc.org)  
215-238-2936