



This bulletin provides an annual snapshot of road safety in CHESTER COUNTY and its 73 municipalities. It highlights and compares trends at the state, county, and local levels.

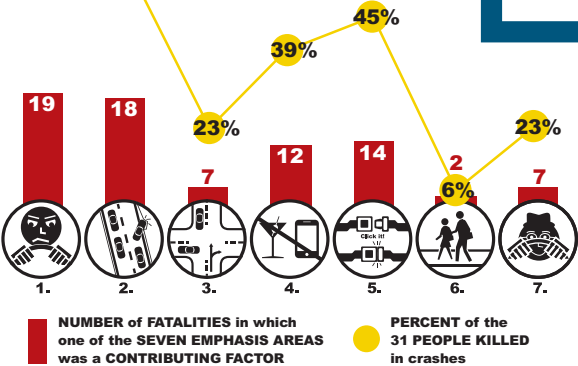
What Contributed to Fatalities in 2012?

Aggressive driving contributed to 19 of the 31 crash fatalities. Improvements in the following seven emphasis areas could eliminate almost all crash fatalities in the future.

1. Curb Aggressive Driving
2. Keep Vehicles on the Roadway and Minimize the Consequences of Leaving the Roadway
3. Improve the Design and Operation of Intersections
4. Reduce Impaired and Distracted Driving
5. Increase Seat Belt Usage
6. Ensure Pedestrian Safety
7. Sustain Safe Senior Mobility

These seven emphasis areas were identified in the 2012 *Transportation Safety Action Plan: Improving Safety in the Delaware Valley*, (DVRPC publication #12030) and were contributing factors in 95 percent of crash fatalities in the Delaware Valley for the period 2008 through 2010.

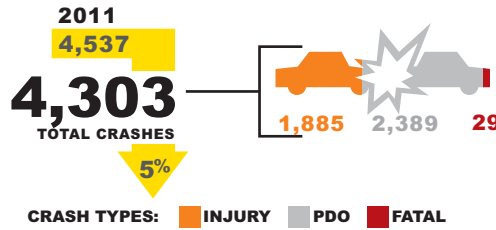
61% 58% Crashes often have multiple contributing circumstances.



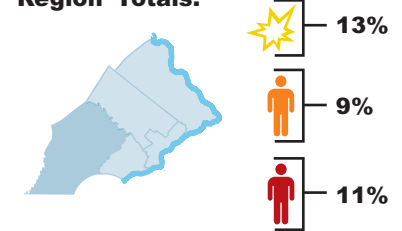
2012 Quick Crash Stats: Chester County

The following figures summarize total crashes [🚗💥], number of people injured [👤], and killed [👤], and Property Damage Only (PDO)¹ crashes for Chester County in 2012. Compared to 2011, crashes and fatalities are down, and injuries are up.

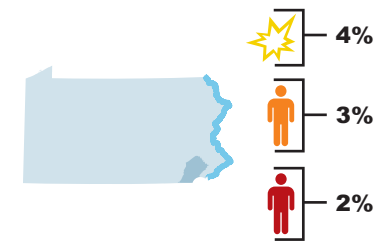
CRASHES



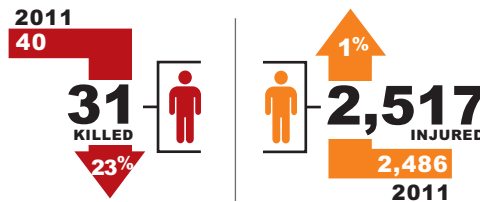
Chester County, Compared to DVRPC's Pennsylvania Five-County Region² Totals:



Chester County, Compared to the Rest of Pennsylvania's Totals:



PEOPLE INVOLVED

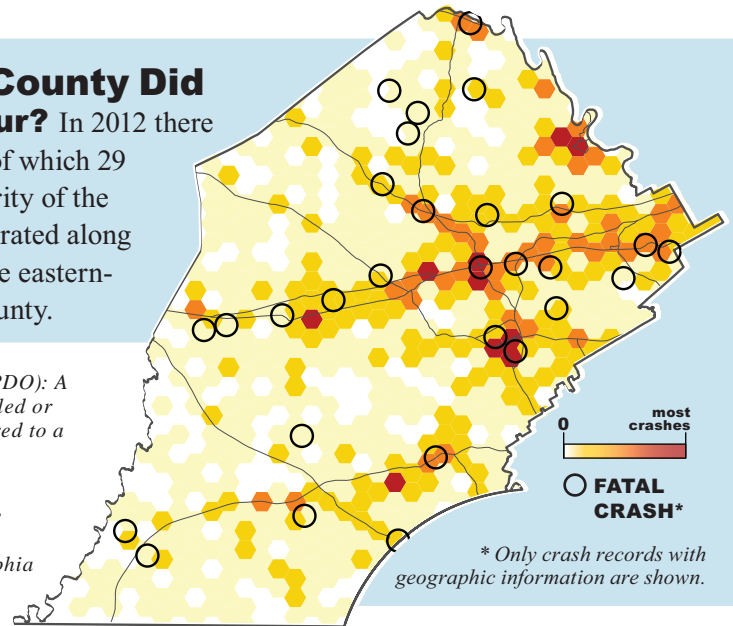


Where in the County Did Crashes Occur?

In 2012 there were 4,303 crashes, of which 29 were fatal. The majority of the crashes were concentrated along major highways in the eastern-central part of the county.

¹Property Damage Only (PDO): A crash where no one was killed or injured, but damage occurred to a vehicle or other property.

²DVRPC's Pennsylvania five-county region includes Bucks, Chester, Delaware, Montgomery, and Philadelphia counties.



Resources to Improve Safety:

DVRPC pursues a wide-ranging approach to improve traffic safety. The Regional Safety Task Force, road safety audits, intersection safety studies, local road newsletters, and funding strategies are available resources: www.dvrpc.org/Transportation/Safety/

See the back for an inside look at crash trends for each municipality.

What Are the Crash Trends in My Municipality?

of CRASHES

of PEOPLE INJURED

of PEOPLE KILLED

MUNICIPALITY	2008			2009			2010			2011			2012			TOTALS: 2008-2012		
ATGLEN BORO.	12	10	0	3	2	0	4	1	0	4	4	0	3	2	0	2	19	0
AVONDALE BORO.	18	5	0	16	10	0	11	3	0	17	10	0	13	5	0	75	33	0
BIRMINGHAM TWP.	47	26	0	41	23	1	46	21	0	57	31	0	34	13	0	225	114	1
CALN TWP.	108	52	0	127	81	0	130	75	1	145	109	0	108	81	1	618	398	2
CHARLESTOWN TWP.	78	36	1	92	36	0	89	50	0	98	45	1	85	41	1	442	208	3
COATESVILLE CITY	54	36	0	79	43	0	89	58	1	60	36	0	64	50	0	346	223	1
DOWNINGTOWN BORO.	49	21	0	49	30	0	50	21	0	58	31	2	51	26	0	257	129	2
EAST BRADFORD TWP.	72	34	2	82	37	0	80	49	1	68	32	0	75	45	0	377	197	3
EAST BRANDYWINE TWP.	62	20	0	45	12	1	33	19	0	35	21	0	35	16	1	210	88	2
EAST CALN TWP.	82	53	0	96	64	0	85	51	0	64	26	1	90	64	0	417	258	1
EAST COVENTRY TWP.	55	33	2	44	24	2	54	32	0	51	31	1	23	16	0	227	136	5
EAST FALLOWFIELD TWP.	43	23	1	40	22	0	34	23	0	29	14	0	60	37	0	206	119	1
EAST GOSHEN TWP.	96	37	0	82	54	0	67	38	0	91	40	1	85	42	2	421	211	3
EAST MARLBOROUGH TWP.	81	36	0	72	26	0	80	44	0	59	24	0	63	31	1	355	161	1
EAST NANTMEAL TWP.	48	24	0	37	20	0	53	31	0	36	19	1	34	16	2	208	110	3
EAST NOTTINGHAM TWP.	49	30	0	58	43	1	46	23	0	46	31	0	36	29	0	235	156	1
EAST PIKELAND TWP.	69	27	0	83	36	0	92	31	0	92	35	2	72	41	0	408	170	2
EAST VINCENT TWP.	55	27	1	52	27	1	38	28	0	49	21	0	48	25	1	242	128	3
EAST WHITELAND TWP.	220	108	4	161	79	0	197	88	1	187	94	0	156	83	0	921	452	5
EASTTOWN TWP.	89	41	0	80	48	1	87	45	0	93	33	0	108	68	2	457	235	3
ELK TWP.	15	10	2	12	3	0	10	6	0	13	10	0	16	21	0	66	50	2
ELVERSON BORO.	9	5	0	11	6	0	5	3	0	7	2	0	5	4	0	37	20	0
FRANKLIN TWP.	54	36	0	37	23	0	38	23	0	41	19	0	46	20	0	216	121	0
HIGHLAND TWP.	29	28	0	27	21	0	28	19	1	37	27	0	28	18	0	149	113	1
HONEY BROOK BORO.	6	4	0	8	5	0	11	8	0	10	5	0	5	2	0	40	24	0
HONEY BROOK TWP.	58	38	2	68	54	1	57	51	2	46	34	0	60	46	0	289	223	5
KENNETT SQUARE BORO.	45	11	0	28	12	0	39	14	0	43	11	0	41	13	0	196	61	0
KENNETT TWP.	114	53	1	91	53	0	83	49	0	124	74	1	90	41	2	502	270	4
LONDON BRITAIN TWP.	29	12	0	28	10	0	26	18	0	29	10	0	21	12	0	133	62	0
LONDON GROVE TWP.	97	57	2	66	29	1	64	41	5	74	33	0	73	46	1	374	206	9
LONDONDERRY TWP.	14	12	1	14	7	0	14	12	0	24	18	0	20	12	0	86	61	1
LOWER OXFORD TWP.	37	24	0	41	17	0	45	35	1	36	31	1	48	31	2	207	138	4
MALVERN BORO.	19	7	0	12	4	0	12	2	0	8	4	0	8	5	0	59	22	0
MODENA BORO.	0	0	0	5	4	0	1	0	0	3	1	0	4	1	0	13	6	0
NEW GARDEN TWP.	130	65	2	122	74	3	113	54	1	124	48	2	124	85	0	613	326	8
NEW LONDON TWP.	46	27	1	36	28	0	30	22	0	32	16	0	34	20	0	178	113	1
NEWLIN TWP.	18	12	0	11	9	0	10	4	0	17	10	0	19	8	0	75	43	0
NORTH COVENTRY TWP.	117	53	1	103	68	2	112	70	2	92	60	1	86	59	1	510	310	7
OXFORD BORO.	26	13	1	16	9	0	8	3	0	5	3	0	11	11	1	66	39	2
PARKESBURG BORO.	14	11	0	13	10	0	12	7	0	18	7	0	9	9	0	66	44	0
PENN TWP.	52	24	0	39	31	0	43	30	0	47	25	0	43	25	0	224	135	0
PENNSBURY TWP.	60	31	2	41	23	0	33	21	1	34	23	1	52	35	0	220	133	4
PHOENIXVILLE BORO.	129	78	0	111	54	0	119	53	0	112	66	1	125	60	0	596	311	1
POCOXON TWP.	20	6	0	31	12	0	17	10	0	25	13	0	19	10	0	112	51	0
SADSBURY TWP.	46	31	0	56	55	1	37	17	0	45	39	0	35	33	1	219	175	2
SCHUYLKILL TWP.	65	52	0	40	24	0	64	26	0	78	42	0	82	52	0	329	196	0
SOUTH COATESVILLE BORO.	11	9	0	12	5	0	9	6	1	14	12	0	16	7	0	62	39	1
SOUTH COVENTRY TWP.	43	31	0	32	30	0	28	12	0	41	31	2	33	25	0	177	129	2
SPRING CITY BORO.	2	0	0	13	7	0	17	15	0	19	8	0	14	4	0	65	34	0
THORNBURY TWP.	33	21	1	21	11	1	19	5	0	32	12	0	32	21	0	137	70	2
TREDYFFRIN TWP.	317	160	0	217	115	0	297	164	0	310	150	0	300	177	0	1,441	766	0
UPPER OXFORD TWP.	34	24	0	44	19	2	33	25	1	30	19	0	30	23	0	171	110	3
UPPER UWCHLAN TWP.	76	35	0	92	62	0	83	33	1	89	43	1	99	79	1	439	252	3
UWCHLAN TWP.	147	80	2	158	82	0	131	63	1	147	75	3	144	65	1	727	365	7
VALLEY TWP.	45	23	2	71	38	0	50	30	1	69	42	1	41	26	1	276	159	5
WALLACE TWP.	49	42	0	52	21	0	38	26	1	47	14	0	44	40	0	230	143	1
WARWICK TWP.	20	7	0	23	10	0	18	10	2	21	16	0	23	11	1	105	54	3
WEST BRADFORD TWP.	104	66	1	114	66	3	97	65	0	98	62	0	89	31	0	502	290	4
WEST BRANDYWINE TWP.	49	47	0	73	47	2	52	29	0	60	34	5	55	36	0	289	193	7
WEST CALN TWP.	58	33	0	67	36	2	58	40	3	62	33	1	44	26	0	289	168	6
WEST CHESTER BORO.	113	70	0	102	52	0	113	94	0	102	72	0	104	60	1	534	348	1
WEST FALLOWFIELD TWP.	20	21	0	23	20	2	25	13	0	22	17	1	25	12	0	115	83	3
WEST GOSHEN TWP.	308	172	3	309	152	0	152	96	1	209	122	4	203	117	1	1,181	659	9
WEST GROVE BORO.	9	6	0	13	5	0	12	7	0	12	7	0	14	8	0	60	33	0
WEST MARLBOROUGH TWP.	38	24	0	36	10	0	31	16	1	37	18	0	40	23	1	182	91	2
WEST NANTMEAL TWP.	32	17	1	36	19	0	39	33	1	43	24	0	43	28	0	193	121	2
WEST NOTTINGHAM TWP.	15	5	1	15	5	0	19	12	1	23	48	1	15	10	0	87	80	3
WEST PIKELAND TWP.	43	16	0	57	20	0	49	20	0	54	22	0	63	26	1	266	104	1
WEST SADSBURY TWP.	36	21	0	41	30	0	40	29	0	43	36	0	40	31	1	200	147	1
WEST VINCENT TWP.	30	7	0	54	19	0	28	15	0	42	27	1	48	23	0	202	91	1
WEST WHITELAND TWP.	234	103	3	225	111	2	231	103	0	279	136	2	228	123	2	1,197	576	9
WESTTOWN TWP.	93	36	0	84	36	0	106	57	0	93	40	2	74	34	0	450	203	2
WILLISTOWN TWP.	101	60	0	92	62	2	79	43	0	76	48	0	95	41	1	443	254	3
COUNTY-WIDE TOTALS	4,696	2,515	40	4,482	2,452	31	4,250	2,390	32	4,537	2,486	40	4,303	2,517	31	22,268	12,360	174

This bulletin provides an annual snapshot of road safety in Chester County and its 73 municipalities. It highlights and compares trends at the state, county, and local levels. This document complements the 2012 Annual Crash Data Bulletin for the Delaware Valley (DVRPC Publication #14015) and is a supplement to the 2012 Transportation Safety Action Plan: Improving Transportation Safety in the Delaware Valley (DVRPC Publication #12030). Analysis in this document was derived from the PennDOT crash database unless otherwise noted. For more information contact: Regina Moore at rmoore@dvrpc.org or 215.238.2862

