



**CONNECTING OUR REGION'S
PRESENT AND FUTURE**



CONNECTIONS 2040

PLAN FOR GREATER PHILADELPHIA

fostering sustainability, equity, and innovation



WHAT DO WE WANT FOR GREATER PHILADELPHIA'S FUTURE?

How do we want our region to grow?
How will it thrive? How will it move forward?

We can let time answer these questions or we can address them now to ensure that Greater Philadelphia has the resources it needs to sustain us into the years ahead.

DVRPC has developed a long-range plan for the nine-county Greater Philadelphia region. Created through collaborative efforts, the Connections 2040 Plan for Greater Philadelphia links our history to the present. It shows how our region, and its residents and businesses can help create a more prosperous, innovative, equitable, and sustainable future by investing in our established communities.

It will take many collective actions to preserve our quality of life and to ensure that Greater Philadelphia realizes its potential.

DVRPC's Long-Range Plan Focuses on Four Key Principles:



Manage growth and development while protecting our natural resources



Create thriving communities where we can live, work, and play



Build a resilient, prosperous economy with greater opportunities for all



Establish a modern and diverse transportation system that serves all users

SHARING A VISION

The vision for Greater Philadelphia is clear. Make our region more resilient and resourceful; reduce our energy dependency; maximize our mobility; make our communities more livable; protect our farms, food sources, open space, and natural resources; enhance our communities and employment centers; and improve our quality of life.

DVRPC developed Connections 2040 in collaboration with multiple partners in Pennsylvania and New Jersey, including state transportation agencies and city and county planning departments. DVRPC also worked with local partners such as the business community, economic development organizations, environmental and transportation groups, and the general public to ensure the Plan addresses the needs of our diverse interests.

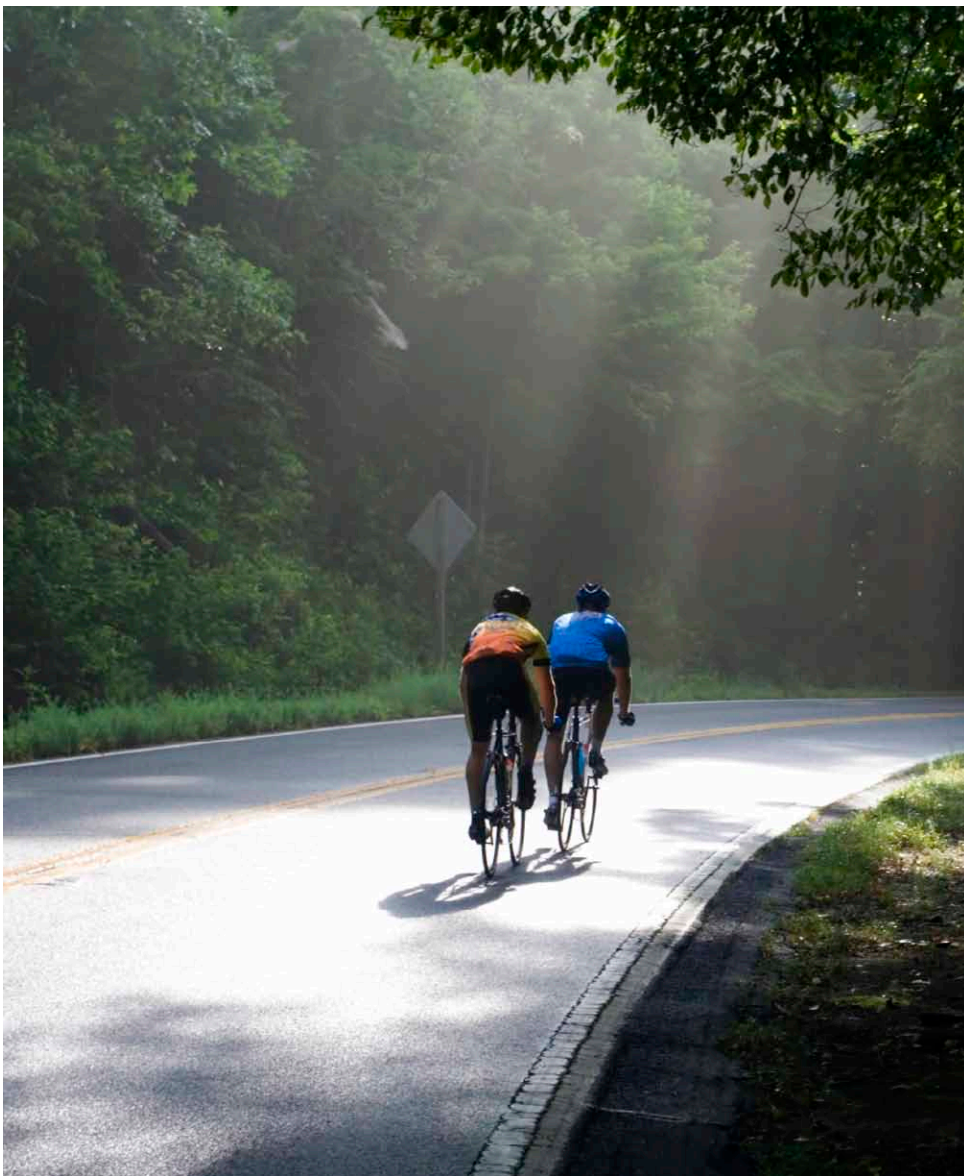


**SUSTAINABILITY.
EQUITY. INNOVATION.**

Sustainability, equity, and innovation are critical to creating a vibrant future for our region. Sustainability is a necessity as we continue to grow and evolve. Equity is essential in creating shared opportunities and successes. And innovation is an imperative as we look to gain efficiencies in everything we do. The Plan highlights a number of programs and initiatives throughout the region that advance these ideals.

A commitment to environmental justice has, and continues to be, reflected in DVRPC's plans and programs, public involvement efforts, and general way of doing business. Connections 2040 furthers DVRPC's commitment to environmental justice and planning for all residents of the region.





MEASURING PROGRESS

Properly planning for the future requires understanding where we are now, where we've been, and where we're going. By constantly monitoring current trends and forecasts, DVRPC can gauge opportunities to positively shape our future.



SUSTAINABILITY. EQUITY. INNOVATION.

DVRPC is currently working with partners in Chester City to assess the city's vulnerability to climate related hazards and implement strategies that improve air and water quality, maintain infrastructure, and redevelop communities.

DVRPC tracks progress using 31 indicators that inform the Long-Range Plan. Key indicators include:

- Population growth and changes
- Employment and economic forecasts
- Transportation
- Land use and development
- Community livability
- The Environment

HOW WILL WE LIVE?

Create thriving communities where we can live, work, and play.

Much of our region's growth over the past several decades has been single use, auto dependent, and unconnected to existing development and infrastructure. This has impacted our environment, energy needs, and transportation system. Development like this causes vital natural resources and farmland to disappear. It also increases energy needs and costs, and forces us to spend more to connect residents and businesses to necessary infrastructure.

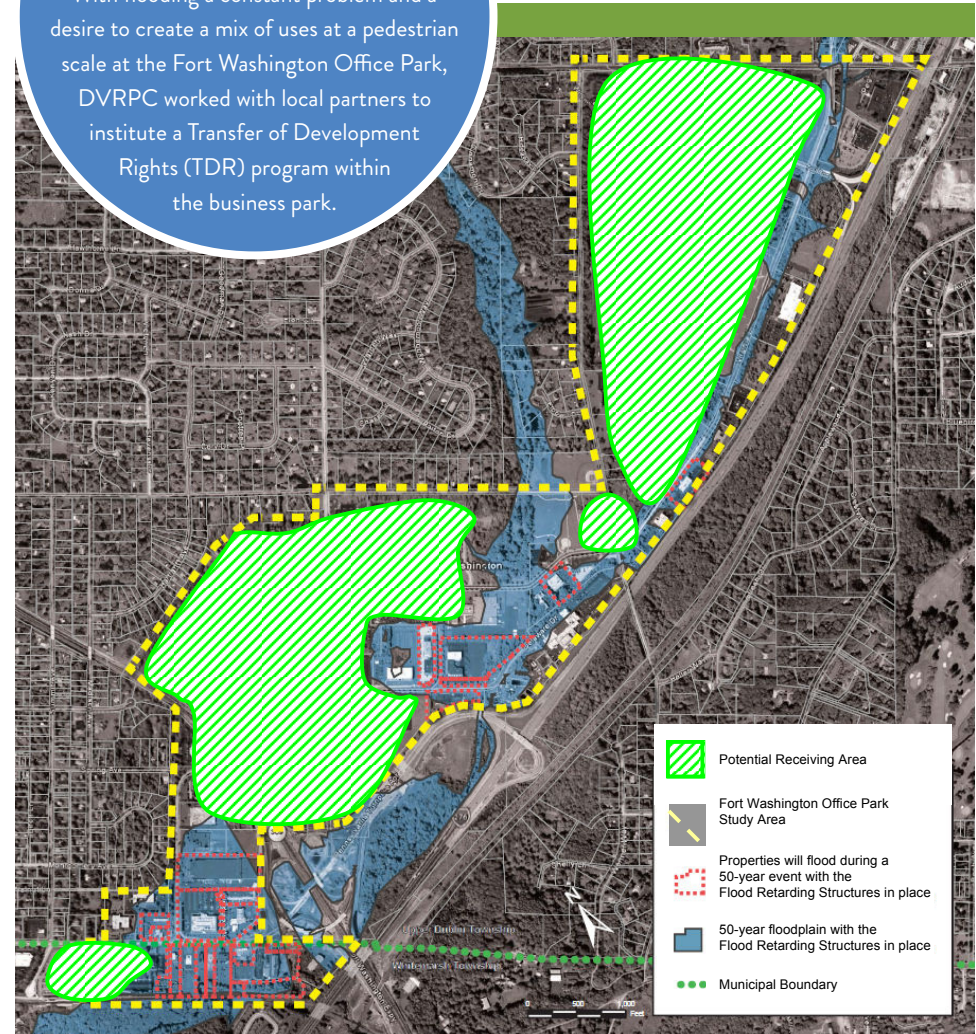
With over 600,000 new residents and 300,000 new jobs forecast by 2040, we must look to meet more of our needs closer to home. Connections 2040 outlines a plan to create livable, pedestrian-friendly communities where people can live, work, and play.

The Plan for Greater Philadelphia concentrates growth within and around more than 120 Centers. Ranging from large to small, suburban to rural, each Center offers a unique sense of place, existing infrastructure, and opportunities for development, revitalization, and community connectivity in a variety of settings.

By focusing development in Centers, we can protect open space, save money, and reduce the need to construct costly drinking water, wastewater, schools, and transportation infrastructure that are expensive to build and maintain.

SUSTAINABILITY. EQUITY. INNOVATION.

With flooding a constant problem and a desire to create a mix of uses at a pedestrian scale at the Fort Washington Office Park, DVRPC worked with local partners to institute a Transfer of Development Rights (TDR) program within the business park.



FORT WASHINGTON OFFICE PARK TDR PLAN

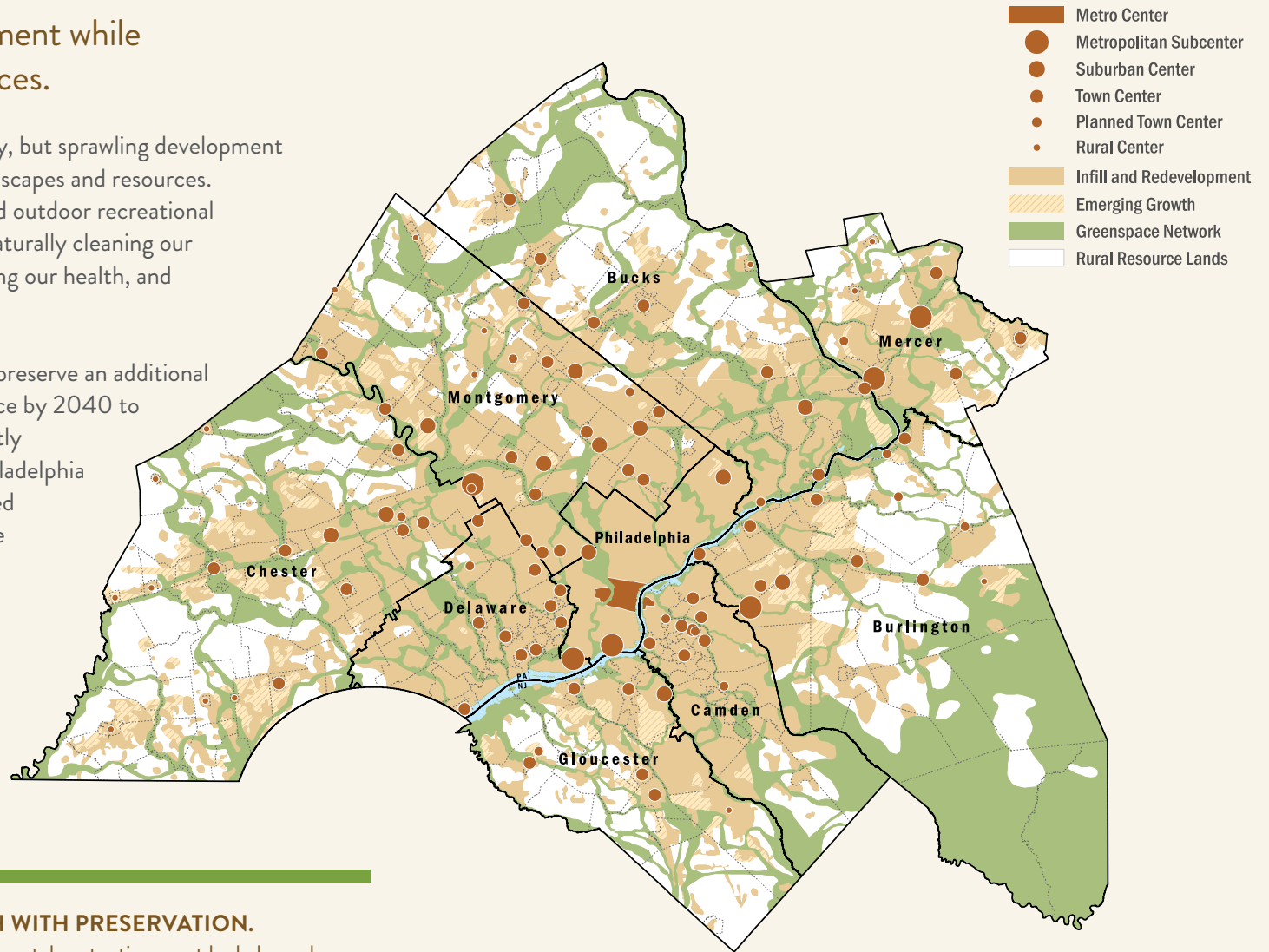
HOW CAN WE GROW RESPONSIBLY?

Manage growth and development while protecting our natural resources.

Our region is home to breathtaking beauty, but sprawling development patterns threaten our region's natural landscapes and resources. Our land is a source of local food, jobs, and outdoor recreational opportunities. It also saves us money by naturally cleaning our air and water, mitigating flooding, improving our health, and enhancing our quality of life.

Connections 2040 outlines strategies to preserve an additional 450,000 acres of farmland and open space by 2040 to help reach a goal of one million permanently protected acres in our region. Greater Philadelphia has already made progress having preserved more than 75,000 acres over the past five years. The Plan's land use vision continues this progress.

LAND USE VISION



BALANCING GROWTH WITH PRESERVATION.

Development and environmental protection must be balanced. Growth should be encouraged where infrastructure already exists to limit the cost of new transportation facilities and reduce energy use and environmental impacts.

The Land Use Vision Map defines areas for open space preservation (Rural Resource Lands and Greenspace Network) as well as development (Centers, Infill and Redevelopment, and Emerging Growth).

WHERE WILL WE WORK?

Build a resilient, prosperous economy with greater opportunities for all.

Thanks to Greater Philadelphia's diverse economy, the region has remained steady, resilient, and ready to grow. We see opportunities in biotechnology, health services, higher education, and the creative industries. We also see positive signs in our region's alternative and clean energy sector that is charged for expansion in the coming years.

While there are many positives, there are some challenges. Despite the high level of college graduates who make their home in the region, educational attainment is low in many of our core cities and developed communities. Unless we address this deficit, qualified employees may not be as easy to find as compared to other regions, and employers may look elsewhere. Access is another concern, as more and more jobs are situated at suburban employment sites not served by transit.



Connections 2040 closes these gaps by prioritizing investments in key economic sectors and locations. Investing in our Centers also supports economic growth since this development approach consumes less energy and places people closer to economic opportunities. It makes it easier for people to access jobs and services without relying on cars.



SUSTAINABILITY. EQUITY. INNOVATION.

Through the Regional Circuit Rider for Energy Efficiency in Local Government Operations, DVRPC is working with municipal partners to identify and implement cost-effective strategies that help reduce energy use in municipal operations.

HOW WILL WE MOVE FORWARD?

Establish a modern and diverse transportation system that serves all users.

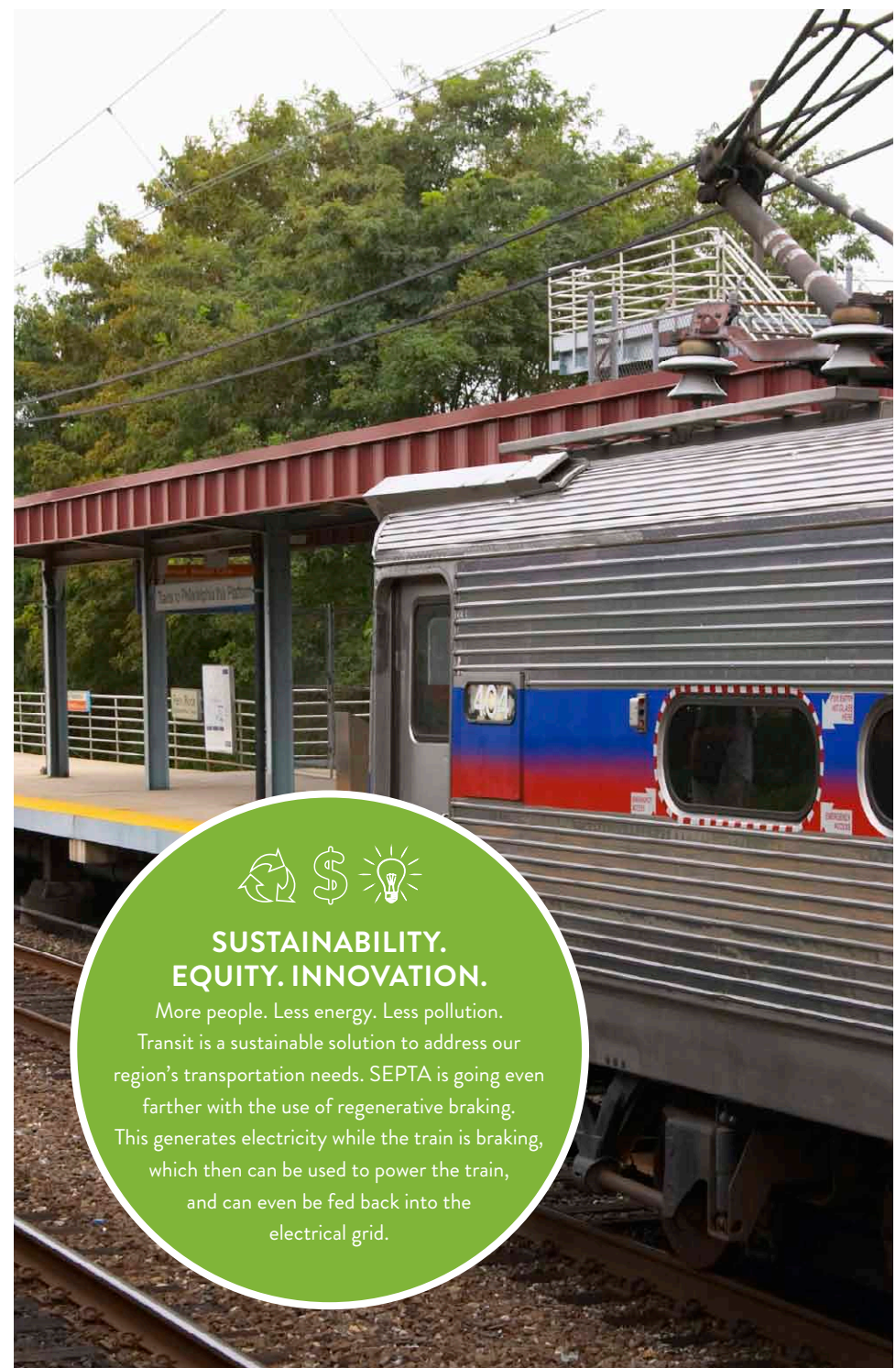
Our ability to advance as a region depends largely on our transportation network. We need roads, rails, and bike and pedestrian trails to take full advantage of all that our region has to offer. It's a challenge, though. Throughout the region there are congested highways with pavement in poor condition, deficient road and transit bridges, and an aging transit system that slow our region's ability to make meaningful progress.



Alternative forms of commuting are growing.
Between 2000 and 2010, transit ridership increased by 10% and biking to work increased by nearly 50%.

For Greater Philadelphia to remain competitive locally and globally, we must do more than simply maintain what we have now. Connections 2040 identifies the steps that are necessary to maximize the safety, efficiency, reliability, and mobility of our region's transportation network. The vision includes:

- Keep people safe and systems moving by eliminating all structurally deficient road and transit bridges and pavement in our region, rebuilding our transportation infrastructure, and replacing older transit vehicles
- Reduce congestion and help travelers make smart, real time transportation decisions through better technology and transportation network design
- Reduce traffic congestion by extending or building 14 new rail and express bus lines that will serve growing parts of our region
- Provide healthier commuting alternatives and reduce traffic and congestion by completing The Circuit, a network of more than 750 miles of walking and biking trails
- Better connect Greater Philadelphia to the global economy by expanding the capacity and efficiency of our freight and aviation network



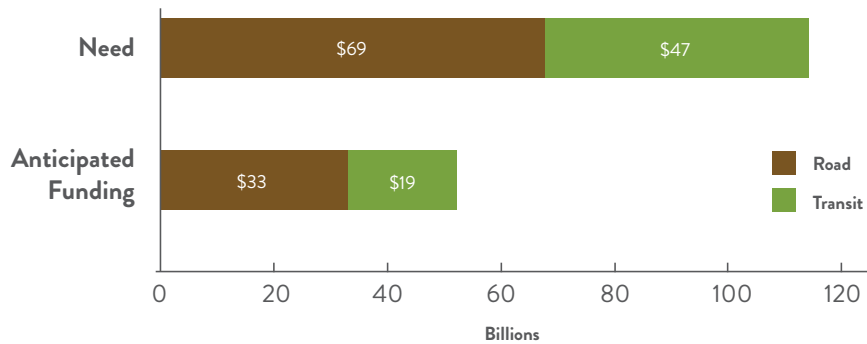
SUSTAINABILITY. EQUITY. INNOVATION.

More people. Less energy. Less pollution.
Transit is a sustainable solution to address our region's transportation needs. SEPTA is going even farther with the use of regenerative braking. This generates electricity while the train is braking, which then can be used to power the train, and can even be fed back into the electrical grid.

INVESTING IN OUR FUTURE

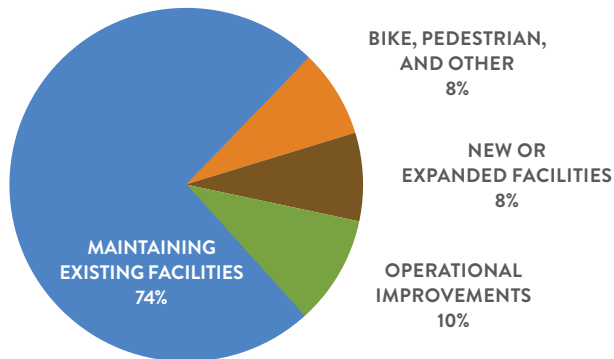
We face funding challenges but continue to move forward.

Our region is vast. Its infrastructure is aging and complex and requires considerable investment to assure that we can continue to move throughout our region and enjoy everything it has to offer. Over the life of the Plan, DVRPC estimates a \$64 billion gap between transportation needs and anticipated funding.



Connections 2040 prioritizes the region's transportation projects to be funded by 2040. The Plan looks first to rebuild and preserve our existing system, and also identifies critical projects that help our system operate more efficiently and increase capacity.

Connections 2040 Transportation Investments by Project Type



While we face considerable challenges in maintaining our region's roads and bridges, there have been improvements in recent years. Greater Philadelphia's number of deficient bridges has decreased by 22% since 2007. SEPTA is also moving forward by managing to purchase new rail cars and fare payment systems in the face of severe cuts to its capital budget.



The transportation research group TRIP estimates that poor road conditions in Greater Philadelphia cost the average driver \$572 annually through wear and tear, repairs, and increased fuel consumption.

As we look for solutions, we increasingly will look to technology and innovation. Technological innovation such as alternative fuels, improved fuel efficiency, adaptive traffic signals, and connected and driverless cars will help lower costs, reduce emissions, make travel safer and less congested, and make vehicles more efficient and reliable.



HELP MAKE THE PLAN A REALITY

DVRPC is working with our member governments and agencies, and regional stakeholders to implement the Connections 2040 Plan, but everyone can play a part in making our region a better place to live and work, and help Greater Philadelphia realize a prosperous and sustainable future. Here are some simple things you can do to support the Plan and enhance life in our region.

- Live, work, shop, and play in our region's Centers.
- Leave the car at home whenever possible. Take transit, take a walk, or ride a bike.
- Carpool and try to travel during off peak hours if possible.
- Be green while driving. No jack rabbit starts or hard braking, keep tires properly inflated, travel light, use cruise control, keep your engine tuned up, and don't idle for more than 30 seconds.
- Be green at home and work. Ensure your home is properly insulated and consider more energy efficient options when replacing your appliances and vehicles. And don't forget to turn off your lights when not in use.
- Purchase fresh food from local sources to help support our region's farms, protect the land, and grow the economy.
- Plant a tree. Grow a garden. Use native plants to reduce stormwater runoff and consider collecting water in a rain barrel for use later.
- Take advantage of all the recreational opportunities our region has to offer. Hike a trail. Picnic in a park. Just enjoy the great outdoors.
- Help create more integrated and convenient communities by supporting mixed use development in your neighborhoods.
- Support efforts to improve, expand, or modernize the transportation network in your community, and to secure the necessary funding to build the system of the future.
- Participate in the planning process. Come to public meetings, review our website and publications, and submit comments on our plans and programs.

ABOUT DVRPC

The Delaware Valley Regional Planning Commission is dedicated to uniting the region's elected officials, planning professionals, and the public with a common vision of making a great region even greater. Shaping the way we live, work, and play, DVRPC builds consensus on improving transportation, promoting smart growth, protecting the environment, and enhancing the economy.

We serve a diverse region of nine counties: Bucks, Chester, Delaware, Montgomery, and Philadelphia in Pennsylvania; and Burlington, Camden, Gloucester, and Mercer in New Jersey. DVRPC is the federally designated Metropolitan Planning Organization for the Greater Philadelphia Region — leading the way to a better future.

DVRPC fully complies with Title VI of the Civil Rights Act of 1964 and related statutes and regulations in all programs and activities. DVRPC's website (www.dvrpc.org) may be translated into multiple languages. Publications and other public documents can be made available in alternative languages and formats, if requested. For more information, please call (215) 238-2871.



Go to www.dvrpc.org/connections2040 for more information or to download the **Connections 2040 Plan for Greater Philadelphia**.

190 N. Independence Mall West
8th Floor
Philadelphia, PA 19106-1520

p 215.592.1800
f 215.592.9125

www.dvrpc.org

PUBLICATION NUMBER: 13071

PHOTO CREDITS:

Cover: Katie Binder, Page 2-3: Jamie Gusrang
Page 9 Map: URS and Urban Partners
Page 18: R. Kennedy for GPTMC