



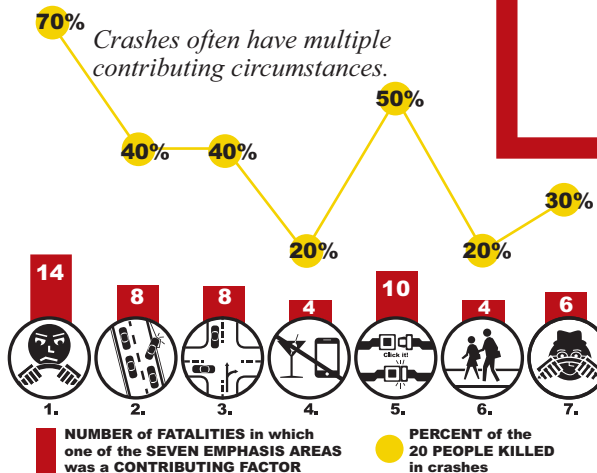
This bulletin provides an annual snapshot of road safety in DELAWARE COUNTY and its 49 municipalities. It highlights and compares trends at the state, county, and local levels.

## What Contributed to Fatalities in 2011?

Aggressive driving contributed to 14 of the 20 crash fatalities. Improvements in the following seven emphasis areas could eliminate almost all crash fatalities like these in the future.

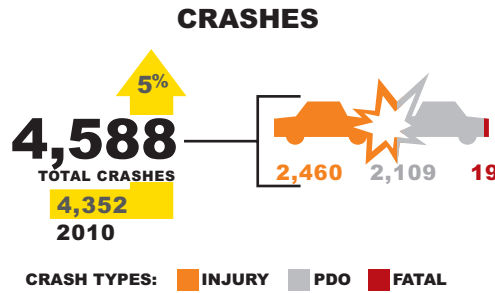
1. Curb Aggressive Driving
2. Keep Vehicles on the Roadway and Minimize the Consequences of Leaving the Roadway
3. Improve the Design and Operation of Intersections
4. Reduce Impaired and Distracted Driving
5. Increase Seat Belt Usage
6. Ensure Pedestrian Safety
7. Sustain Safe Senior Mobility

These seven emphasis areas were identified in the 2012 Transportation Safety Action Plan: Improving Safety in the Delaware Valley, and were contributing factors in 95 percent of crash fatalities in the Delaware Valley, for the period 2008 through 2010.



## 2011 Quick Crash Stats: Delaware County

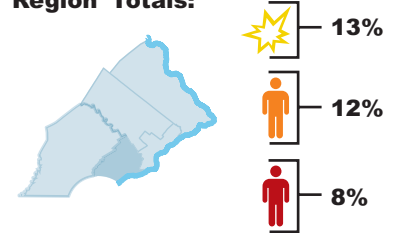
The following figures summarize total crashes [🌟], number of people injured [👤] and killed [👤], and Property Damage Only (PDO)<sup>1</sup> crashes for Delaware County in 2011. Compared to 2010, crashes and injuries are up, and fatalities are down.



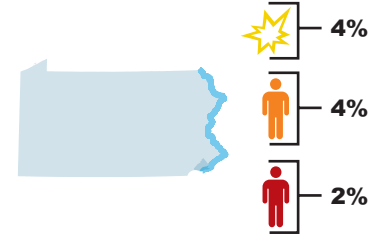
<sup>1</sup>Property Damage Only (PDO): A crash where no one was killed or injured, but damage occurred to a vehicle or other property.

<sup>2</sup>DVRPC's Pennsylvania five-county region includes Bucks, Chester, Delaware, Montgomery, and Philadelphia counties.

### Delaware County, Compared to DVRPC's Pennsylvania Five-County Region<sup>2</sup> Totals:

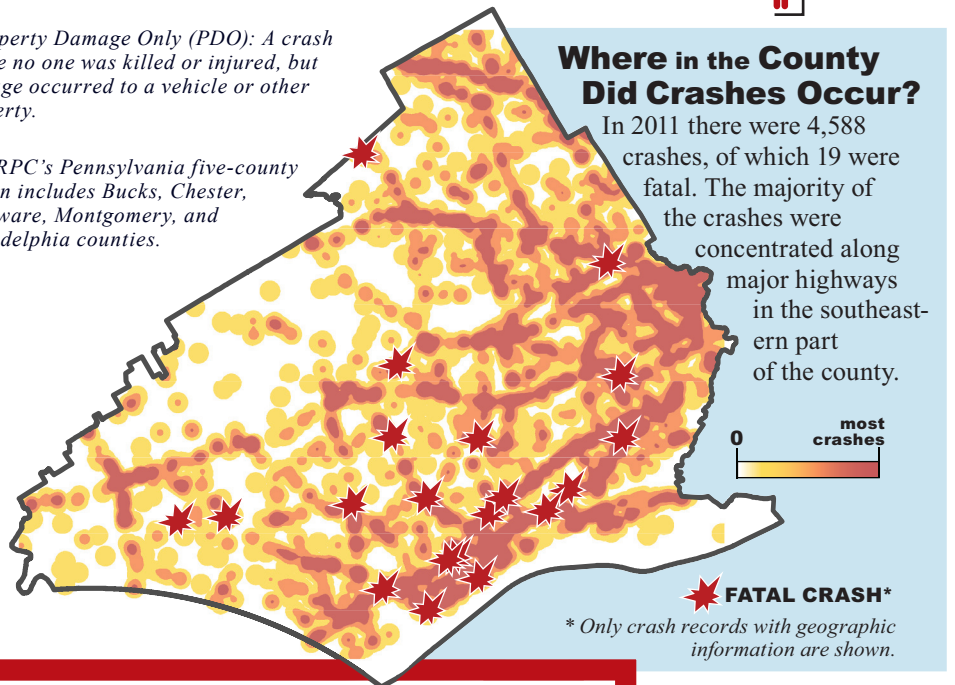


### Delaware County, Compared to the Rest of Pennsylvania's Totals:



### Where in the County Did Crashes Occur?

In 2011 there were 4,588 crashes, of which 19 were fatal. The majority of the crashes were concentrated along major highways in the southeastern part of the county.



## Resources to Improve Safety:

DVRPC pursues a wide-ranging approach to improve traffic safety. The Regional Safety Task Force, road safety audits, intersection safety studies, local road newsletters, and funding strategies are available resources:

[www.dvrpc.org/Transportation/Safety/](http://www.dvrpc.org/Transportation/Safety/)

See the back for an inside look at crash trends for each municipality.

# What Are the Crash Trends in My Municipality?



# of CRASHES



# of PEOPLE INJURED



# of PEOPLE KILLED

MUNICIPALITY	2007			2008			2009			2010			2011			TOTALS: 2007-2011		
ALDAN BORO.	37	30	0	39	28	0	44	33	0	45	56	0	38	26	1	203	173	1
ASTON TWP.	134	113	1	120	92	0	101	80	0	116	83	0	103	78	1	574	446	2
BETHEL TWP.	51	22	0	52	17	0	37	30	0	36	17	0	61	30	0	237	116	0
BROOK HAVEN BORO.	60	53	0	62	56	0	57	53	0	56	61	0	59	52	1	294	275	1
CHADDS FORD TWP.	89	62	0	81	38	1	91	50	0	59	28	1	87	63	0	407	241	2
CHESTER CITY	427	414	4	324	257	3	384	342	3	355	306	2	358	311	4	1,848	1,630	16
CHESTER HEIGHTS BORO.	36	19	0	34	17	0	39	16	0	38	36	0	35	25	0	182	113	0
CHESTER TWP.	29	19	0	42	26	0	58	28	1	46	29	0	70	48	0	245	150	1
CLIFTON HEIGHTS BORO.	0	0	0	5	4	0	17	24	0	24	19	0	22	26	0	68	73	0
COLLINGDALE BORO.	29	27	0	48	52	1	47	51	0	59	54	0	54	37	0	237	221	1
COLWYN BORO.	6	5	0	3	2	0	2	2	0	0	0	0	0	0	0	11	9	0
CONCORD TWP.	205	144	1	191	145	1	186	132	1	142	92	1	170	128	2	894	641	6
DARBY BORO.	6	4	0	14	5	1	18	16	0	13	16	0	7	7	0	58	48	1
DARBY TWP.	41	47	0	39	32	0	10	6	0	17	15	0	31	33	0	138	133	0
EAST LANSDOWNE BORO.	21	11	0	43	31	0	23	26	0	27	25	0	21	20	0	135	113	0
EDDYSTONE BORO.	14	17	0	18	14	0	13	13	0	17	15	0	23	16	0	85	75	0
EDGMONT TWP.	63	40	0	60	40	1	55	45	1	45	35	0	39	26	0	262	186	2
FOLCROFT BORO.	9	12	0	0	0	0	6	7	0	22	15	0	21	14	0	58	48	0
GLENOLDEN BORO.	88	54	0	92	76	1	90	89	0	92	79	3	98	72	2	460	370	6
HAVERTOWN TWP.	294	204	0	292	225	0	307	230	1	302	252	2	265	188	0	1,460	1,099	3
LANSDOWNE BORO.	62	45	0	49	49	1	55	50	0	66	62	1	78	75	0	310	281	2
LOWER CHICHESTER TWP.	24	17	0	16	11	0	26	12	2	20	15	0	31	20	0	117	75	2
MARCUS HOOK BORO.	0	0	0	0	0	0	4	3	0	11	7	0	12	10	0	27	20	0
MARPLE TWP.	263	194	1	231	156	2	219	168	0	244	172	6	272	213	0	1,229	903	9
MEDIA BORO.	1	1	0	0	0	0	30	23	1	26	18	0	46	23	0	103	65	1
MIDDLETOWN TWP.	280	200	3	241	185	0	256	172	1	208	156	1	196	161	1	1,181	874	6
MILLBOURNE BORO.	3	4	0	0	0	0	7	8	0	4	1	0	4	3	0	18	16	0
MORTON BORO.	1	1	0	1	1	0	2	1	0	0	0	0	1	0	0	5	3	0
NETHER PROVIDENCE TWP.	169	100	3	125	71	0	121	81	0	99	76	0	111	87	1	625	415	4
NEWTOWN TWP.	143	105	1	160	112	1	141	88	1	132	95	1	129	90	1	705	490	5
NORWOOD BORO.	11	10	0	8	7	0	15	11	0	12	15	0	30	31	0	76	74	0
PARKSIDE BORO.	4	2	0	1	0	0	4	1	0	10	16	0	7	7	0	26	26	0
PROSPECT PARK BORO.	48	24	0	1	0	1	14	7	0	25	18	0	46	33	0	134	82	1
RADNOR TWP.	371	172	0	388	219	1	323	158	1	319	196	1	365	227	0	1,766	972	3
RIDLEY PARK BORO.	21	22	0	12	7	0	20	13	0	15	7	0	22	22	2	90	71	2
RIDLEY TWP.	291	184	2	308	235	1	306	208	3	288	226	0	285	161	1	1,478	1,014	7
ROSE VALLEY BORO.	11	7	0	10	7	0	10	8	0	2	2	0	5	2	0	38	26	0
RUTLEDGE BORO.	2	1	0	2	1	0	4	2	0	2	1	0	3	1	0	13	6	0
SHARON HILL BORO.	31	21	0	36	32	1	26	20	0	27	32	0	31	24	0	151	129	1
SPRINGFIELD TWP.	277	214	2	276	229	0	256	172	0	254	200	0	223	155	0	1,286	970	2
SWARTHMORE BORO.	46	28	0	35	19	1	32	15	0	28	16	0	29	19	0	170	97	1
THORNBURY TWP.	39	21	0	48	27	0	40	15	0	38	44	0	24	21	0	189	128	0
TINICUN TWP.	191	133	0	153	146	0	118	97	0	136	101	1	167	121	0	765	598	1
TRAINER BORO.	0	0	0	1	0	0	0	0	0	0	0	0	0	0	0	1	0	0
UPLAND BORO.	21	16	0	20	15	0	23	19	0	27	28	0	25	23	0	116	101	0
UPPER CHICHESTER TWP.	262	166	2	221	175	1	133	77	2	212	131	1	236	180	1	1,064	729	7
UPPER DARBY TWP.	417	411	1	434	366	0	429	397	2	471	374	2	490	402	1	2,241	1,950	6
UPPER PROVIDENCE TWP.	3	1	0	111	66	2	101	45	0	117	61	0	99	53	1	431	226	3
YEADON BORO.	3	0	1	71	51	0	44	37	0	48	47	0	59	55	0	225	190	1
<b>COUNTY-WIDE TOTALS</b>	<b>4,634</b>	<b>3,397</b>	<b>22</b>	<b>4,518</b>	<b>3,344</b>	<b>21</b>	<b>4,344</b>	<b>3,181</b>	<b>20</b>	<b>4,352</b>	<b>3,350</b>	<b>23</b>	<b>4,588</b>	<b>3,419</b>	<b>20</b>	<b>22,436</b>	<b>16,691</b>	<b>106</b>

This bulletin provides an annual snapshot of road safety in Delaware County and its 49 municipalities. It highlights and compares trends at the state, county, and local levels. This document complements the 2011 Annual Crash Data Bulletin for the Delaware Valley (DVRPC Publication #13010) and is a supplement to the 2012 Transportation Safety Action Plan: Improving Transportation Safety in the Delaware Valley (DVRPC Publication #12030). Analysis in this document was derived from the NJDOT and PennDOT crash databases unless otherwise noted. **For more information contact: Regina Moore at rmoore@dvrpc.org or 215.238.2862**

