



This bulletin provides an annual snapshot of road safety in CHESTER COUNTY and its 73 municipalities. It highlights and compares trends at the state, county, and local levels.

## What Contributed to Fatalities in 2011?

Aggressive driving contributed to 25 of the 40 crash fatalities. Improvements in the following seven emphasis areas could eliminate almost all crash fatalities like these in the future.

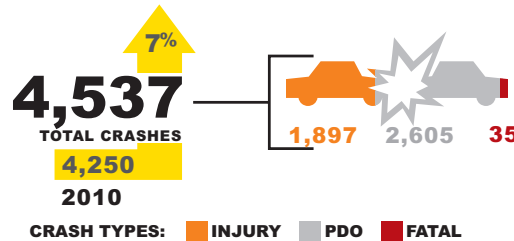
1. Curb Aggressive Driving
2. Keep Vehicles on the Roadway and Minimize the Consequences of Leaving the Roadway
3. Improve the Design and Operation of Intersections
4. Reduce Impaired and Distracted Driving
5. Increase Seat Belt Usage
6. Ensure Pedestrian Safety
7. Sustain Safe Senior Mobility

These seven emphasis areas were identified in the 2012 *Transportation Safety Action Plan: Improving Safety in the Delaware Valley*, and were contributing factors in 95 percent of crash fatalities in the Delaware Valley, for the period 2008 through 2010.

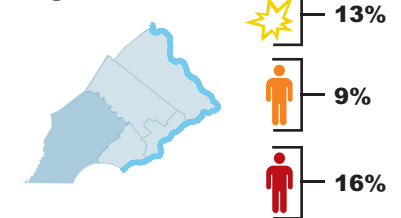
## 2011 Quick Crash Stats: Chester County

The following figures summarize total crashes [🌟], number of people injured [👤] and killed [👤], and Property Damage Only (PDO)<sup>1</sup> crashes for Chester County in 2011. Compared to 2010, crashes, injuries, and fatalities are up.

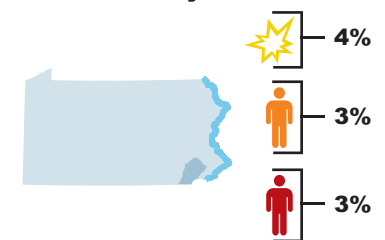
### CRASHES



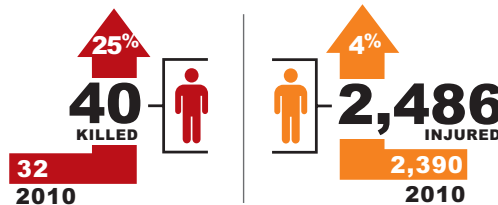
### Chester County, Compared to DVRPC's Pennsylvania Five-County Region<sup>2</sup> Totals:



### Chester County, Compared to the Rest of Pennsylvania's Totals:



### PEOPLE INVOLVED

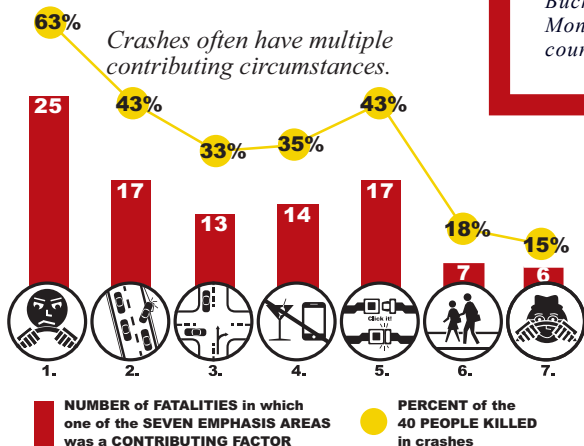
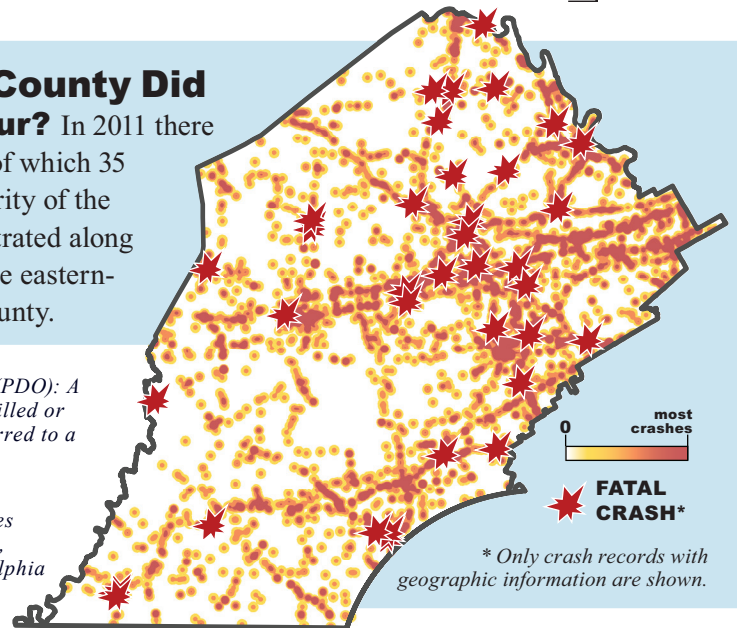


## Where in the County Did Crashes Occur?

In 2011 there were 4,537 crashes, of which 35 were fatal. The majority of the crashes were concentrated along major highways in the eastern-central part of the county.

<sup>1</sup>Property Damage Only (PDO): A crash where no one was killed or injured, but damage occurred to a vehicle or other property.

<sup>2</sup>DVRPC's Pennsylvania five-county region includes Bucks, Chester, Delaware, Montgomery, and Philadelphia counties.



## Resources to Improve Safety:

DVRPC pursues a wide-ranging approach to improve traffic safety. The Regional Safety Task Force, road safety audits, intersection safety studies, local road newsletters, and funding strategies are available resources:

[www.dvrpc.org/Transportation/Safety/](http://www.dvrpc.org/Transportation/Safety/)

See the back for an inside look at crash trends for each municipality.

# What Are the Crash Trends in My Municipality?

# of CRASHES | # of PEOPLE INJURED | # of PEOPLE KILLED

MUNICIPALITY	2007			2008			2009			2010			2011			TOTALS: 2007-2011		
ATGLEN BORO.	7	3	0	12	10	0	3	2	0	4	1	0	4	4	0	30	20	0
AVONDALE BORO.	13	7	1	18	5	0	16	10	0	11	3	0	17	10	0	75	35	1
BIRMINGHAM TWP.	65	16	0	47	26	0	41	23	1	46	21	0	57	31	0	256	117	1
CALN TWP.	81	52	1	108	52	0	127	81	0	130	75	1	145	109	0	591	369	2
CHARLESTOWN TWP.	112	44	1	78	36	1	92	36	0	89	50	0	98	45	1	469	211	3
COATESVILLE CITY	55	32	1	55	37	0	79	43	0	89	58	1	60	36	0	338	206	2
DOWNINGTOWN BORO.	58	39	3	49	21	0	49	30	0	50	21	0	58	31	2	264	142	5
EAST BRADFORD TWP.	36	25	0	72	34	2	82	37	0	80	49	1	68	32	0	338	177	3
EAST BRANDYWINE TWP.	72	25	0	62	20	0	45	12	1	33	19	0	35	21	0	247	97	1
EAST CALN TWP.	84	49	2	82	53	0	96	64	0	85	51	0	64	26	1	411	243	3
EAST COVENTRY TWP.	45	14	2	55	33	2	44	24	2	54	32	0	51	31	1	249	134	7
EAST FALLOWFIELD TWP.	68	50	0	43	23	1	40	22	0	34	23	0	29	14	0	214	132	1
EAST GOSHEN TWP.	85	48	1	96	37	0	82	54	0	67	38	0	91	40	1	421	217	2
EAST MARLBOROUGH TWP.	89	54	0	81	36	0	72	26	0	80	44	0	59	24	0	381	184	0
EAST NANTMEAL TWP.	35	14	0	48	24	0	37	20	0	53	31	0	36	19	1	209	108	1
EAST NOTTINGHAM TWP.	44	20	1	49	30	0	58	43	1	46	23	0	46	31	0	243	147	2
EAST PIKELAND TWP.	74	32	0	69	27	0	83	36	0	92	31	0	92	35	2	410	161	2
EAST VINCENT TWP.	68	45	1	55	27	1	52	27	1	38	28	0	49	21	0	262	148	3
EAST WHITELAND TWP.	238	135	2	220	108	4	161	79	0	197	88	1	187	94	0	1,003	504	7
EASTTOWN TWP.	94	59	0	89	41	0	80	48	1	87	45	0	93	33	0	443	226	1
ELK TWP.	10	5	1	15	10	2	12	3	0	10	6	0	13	10	0	60	34	3
ELVERSON BORO.	6	7	0	9	5	0	11	6	0	5	3	0	7	2	0	38	23	0
FRANKLIN TWP.	42	30	0	54	36	0	37	23	0	38	23	0	41	19	0	212	131	0
HIGHLAND TWP.	36	30	1	29	28	0	27	21	0	28	19	1	37	27	0	157	125	2
HONEY BROOK BORO.	7	5	0	6	4	0	8	5	0	11	8	0	10	5	0	42	27	0
HONEY BROOK TWP.	64	38	0	58	38	2	68	54	1	57	51	2	46	34	0	293	215	5
KENNETT SQUARE BORO.	56	24	1	45	11	0	28	12	0	39	14	0	43	11	0	211	72	1
KENNETT TWP.	133	79	1	114	53	1	91	53	0	83	49	0	124	74	1	545	308	3
LONDON BRITAIN TWP.	37	15	0	29	12	0	28	10	0	26	18	0	29	10	0	149	65	0
LONDON GROVE TWP.	94	53	1	97	57	2	66	29	1	64	41	5	74	33	0	395	213	9
LONDONDERRY TWP.	18	15	0	14	12	1	14	7	0	14	12	0	24	18	0	84	64	1
LOWER OXFORD TWP.	42	31	1	37	24	0	41	17	0	45	35	1	36	31	1	201	138	3
MALVERN BORO.	12	5	0	19	7	0	12	4	0	12	2	0	8	4	0	63	22	0
MODENA BORO.	5	3	0	0	0	0	5	4	0	1	0	0	3	1	0	14	8	0
NEW GARDEN TWP.	134	69	3	130	65	2	122	74	3	113	54	1	124	48	2	623	310	11
NEW LONDON TWP.	36	22	0	46	27	1	36	28	0	30	22	0	32	16	0	180	115	1
NEWLIN TWP.	7	6	0	18	12	0	11	9	0	10	4	0	17	10	0	63	41	0
NORTH COVENTRY TWP.	106	52	1	117	53	1	103	68	2	112	70	2	92	60	1	530	303	7
OXFORD BORO.	15	5	0	26	13	1	16	9	0	8	3	0	5	3	0	70	33	1
PARKESBURG BORO.	9	8	1	14	11	0	13	10	0	12	7	0	18	7	0	66	43	1
PENN TWP.	45	41	1	52	24	0	39	31	0	43	30	0	47	25	0	226	151	1
PENNSBURG TWP.	52	38	0	60	31	2	41	23	0	33	21	1	34	23	1	220	136	4
PHOENIXVILLE BORO.	96	57	1	129	78	0	111	54	0	119	53	0	112	66	1	567	308	2
POCOPSON TWP.	28	26	2	20	6	0	31	12	0	17	10	0	25	13	0	121	67	2
SADSBURY TWP.	30	18	2	46	31	0	56	55	1	37	17	0	45	39	0	214	160	3
SCHUYLKILL TWP.	58	30	1	65	52	0	40	24	0	64	26	0	78	42	0	305	174	1
SOUTH COATESVILLE BORO.	17	11	0	11	9	0	12	5	0	9	6	1	14	12	0	63	43	1
SOUTH COVENTRY TWP.	28	24	2	43	31	0	32	30	0	28	12	0	41	31	2	172	128	4
SPRING CITY BORO.	0	0	0	2	0	0	13	7	0	17	15	0	19	8	0	51	30	0
THORNBURY TWP.	21	11	0	33	21	1	21	11	1	19	5	0	32	12	0	126	60	2
TREDYFFRIN TWP.	314	210	7	318	160	0	217	115	0	297	164	0	310	150	0	1,456	799	7
UPPER OXFORD TWP.	32	22	0	34	24	0	44	19	2	33	25	1	30	19	0	173	109	3
UPPER UWCHLAN TWP.	86	43	1	76	35	0	92	62	0	83	33	1	89	43	1	426	216	3
UWCHLAN TWP.	141	68	0	147	80	2	158	82	0	131	63	1	147	75	3	724	368	6
VALLEY TWP.	50	29	0	45	23	2	71	38	0	50	30	1	69	42	1	285	162	4
WALLACE TWP.	46	64	0	49	42	0	52	21	0	38	26	1	47	14	0	232	167	1
WARWICK TWP.	25	18	0	20	7	0	23	10	0	18	10	2	21	16	0	107	61	2
WEST BRADFORD TWP.	108	57	0	104	66	1	114	66	3	97	65	0	98	62	0	521	316	4
WEST BRANDYWINE TWP.	60	44	0	49	47	0	73	47	2	52	29	0	60	34	5	294	201	7
WEST CALN TWP.	62	28	2	58	33	0	67	36	2	58	40	3	62	33	1	307	170	8
WEST CHESTER BORO.	61	34	0	113	70	0	102	52	0	113	94	0	102	72	0	491	322	0
WEST FALLOWFIELD TWP.	12	5	0	20	21	0	23	20	2	25	13	0	22	17	1	102	76	3
WEST GOSHEN TWP.	288	214	4	308	172	3	309	152	0	152	96	1	209	122	4	1,266	756	12
WEST GROVE BORO.	10	3	0	9	6	0	13	5	0	12	7	0	12	7	0	56	28	0
WEST MARLBOROUGH TWP.	44	28	1	38	24	0	36	10	0	31	16	1	37	18	0	186	96	2
WEST NANTMEAL TWP.	55	34	4	32	17	1	36	19	0	39	33	1	43	24	0	205	127	6
WEST NOTTINGHAM TWP.	25	8	0	15	5	1	15	5	0	19	12	1	23	48	1	97	78	3
WEST PIKELAND TWP.	63	19	0	43	16	0	57	20	0	49	20	0	54	22	0	266	97	0
WEST SADSBURY TWP.	57	34	0	36	21	0	41	30	0	40	29	0	43	36	0	217	150	0
WEST VINCENT TWP.	59	24	0	30	7	0	54	19	0	28	15	0	42	27	1	213	92	1
WEST WHITELAND TWP.	258	144	0	234	103	3	225	111	2	231	103	0	279	136	2	1,227	597	7
WESTTOWN TWP.	88	33	0	93	36	0	84	36	0	106	57	0	93	40	2	464	202	2
WILLISTOWN TWP.	112	69	0	101	60	0	92	62	2	79	43	0	76	48	0	460	282	2
<b>COUNTY-WIDE TOTALS</b>	<b>4,723</b>	<b>2,753</b>	<b>55</b>	<b>4,698</b>	<b>2,516</b>	<b>40</b>	<b>4,482</b>	<b>2,452</b>	<b>31</b>	<b>4,250</b>	<b>2,390</b>	<b>32</b>	<b>4,537</b>	<b>2,486</b>	<b>40</b>	<b>22,690</b>	<b>12,597</b>	<b>198</b>

This bulletin provides an annual snapshot of road safety in Chester County and its 73 municipalities. It highlights and compares trends at the state, county, and local levels. This document complements the 2011 Annual Crash Data Bulletin for the Delaware Valley (DVRPC Publication #13010) and is a supplement to the 2012 Transportation Safety Action Plan: Improving Transportation Safety in the Delaware Valley (DVRPC Publication #12030). Analysis in this document was derived from the NJDOT and PennDOT crash databases unless otherwise noted. **For more information contact: Regina Moore at [rmoore@dvrpc.org](mailto:rmoore@dvrpc.org) or 215.238.2862**

