



This bulletin provides an annual snapshot of road safety in BURLINGTON COUNTY and its 40 municipalities. It highlights and compares trends at the state, county, and local levels.

What Contributed to Fatalities in 2011?

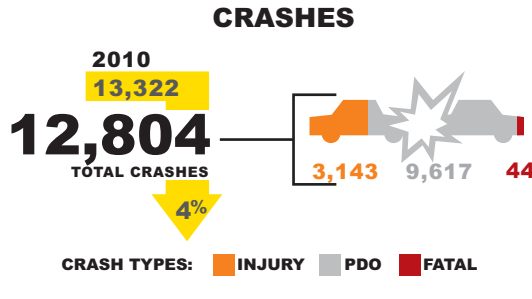
Vehicles leaving the roadway contributed to 21 of the 45 crash fatalities. Improvements in the following seven emphasis areas could eliminate almost all crash fatalities like these in the future.

1. Curb Aggressive Driving
2. Keep Vehicles on the Roadway and Minimize the Consequences of Leaving the Roadway
3. Improve the Design and Operation of Intersections
4. Reduce Impaired and Distracted Driving
5. Increase Seat Belt Usage
6. Ensure Pedestrian Safety
7. Sustain Safe Senior Mobility

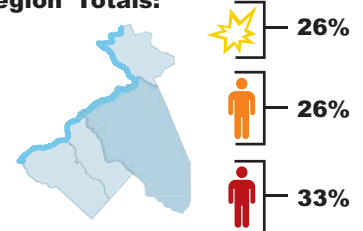
These seven emphasis areas were identified in the 2012 *Transportation Safety Action Plan: Improving Safety in the Delaware Valley*, and were contributing factors in 95 percent of crash fatalities in the Delaware Valley, for the period 2008 through 2010.

2011 Quick Crash Stats: Burlington County

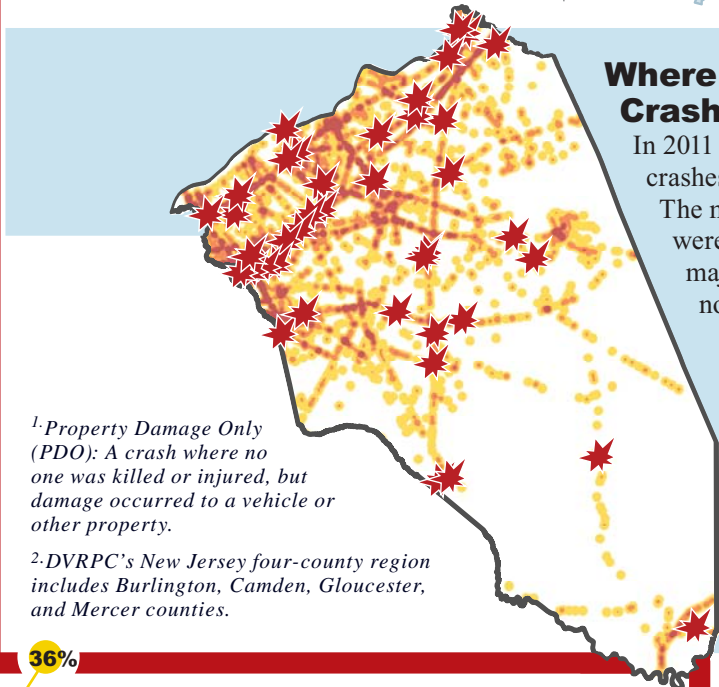
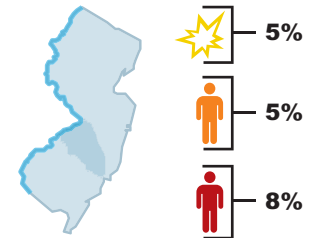
The following figures summarize total crashes [💥], number of people injured [👤] and killed [👤], and Property Damage Only (PDO)¹ crashes for Burlington County in 2011. Compared to 2010, crashes and injuries are down, however fatalities are up.



Burlington County, Compared to DVRPC's New Jersey Four-County Region² Totals:

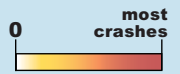


Burlington County, Compared to the Rest of New Jersey's Totals:



Where in the County Did Crashes Occur?

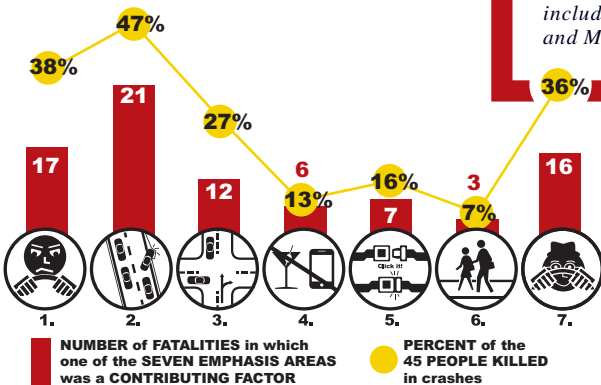
In 2011 there were 12,804 crashes, of which 44 were fatal. The majority of the crashes were concentrated along major highways in the northern part of the county.



★ FATAL CRASH*
 * Only crash records with geographic information are shown.

¹Property Damage Only (PDO): A crash where no one was killed or injured, but damage occurred to a vehicle or other property.

²DVRPC's New Jersey four-county region includes Burlington, Camden, Gloucester, and Mercer counties.



Crashes often have multiple contributing circumstances.

Resources to Improve Safety:

DVRPC pursues a wide-ranging approach to improve traffic safety. The Regional Safety Task Force, road safety audits, intersection safety studies, local road newsletters, and funding strategies are available resources: www.dvrpc.org/Transportation/Safety/

See the back for an inside look at crash trends for each municipality.

What Are the Crash Trends in My Municipality?



of CRASHES



of PEOPLE INJURED



of PEOPLE KILLED

MUNICIPALITY	2007			2008			2009			2010			2011			TOTALS: 2007-2011		
BASS RIVER TWP.	186	66	0	124	56	0	169	75	1	179	72	2	160	73	1	818	342	4
BEVERLY CITY	26	14	0	39	9	0	27	7	0	23	17	0	28	6	1	143	53	1
BORDENTOWN CITY	95	17	0	97	21	0	83	20	0	83	17	0	74	12	0	432	87	0
BORDENTOWN TWP.	653	155	1	554	137	2	586	161	2	598	157	3	550	160	3	2,941	770	11
BURLINGTON CITY	514	140	1	469	108	1	496	176	1	491	173	2	422	142	0	2,392	739	5
BURLINGTON TWP.	737	226	3	720	219	0	679	237	3	762	289	0	672	243	0	3,570	1,214	6
CHESTERFIELD TWP.	156	41	1	170	87	1	161	69	0	161	49	1	178	68	1	826	314	4
CINNAMINSON TWP.	335	161	4	304	143	0	257	142	1	260	138	1	259	133	3	1,415	717	9
DELANCO TWP.	0	0	0	0	0	0	2	1	0	2	0	0	12	2	0	16	3	0
DELRAN TWP.	439	105	0	450	84	0	503	154	2	470	142	1	507	141	0	2,369	626	3
EASTAMPTON TWP.	91	51	0	104	49	1	149	44	0	103	39	1	118	55	0	565	238	2
EDGEWATER PARK TWP.	144	39	1	163	73	1	146	47	0	150	47	0	126	46	2	729	252	4
EVESHAM TWP.	1,459	473	3	1,360	425	2	1,304	441	3	1,309	407	1	1,255	350	2	6,687	2,096	11
FIELDSBORO BORO.	4	3	0	3	0	0	6	0	0	7	0	0	7	1	0	27	4	0
FLORENCE TWP.	287	92	0	275	93	1	282	86	0	374	94	1	272	86	0	1,490	451	2
HAINESPORT TWP.	209	79	0	204	56	1	221	79	2	197	53	0	212	51	0	1,043	318	3
LUMBERTON TWP.	319	75	2	332	90	1	366	116	2	295	104	1	304	105	0	1,616	490	6
MANSFIELD TWP.	483	154	0	449	134	3	450	124	4	500	195	3	435	138	3	2,317	745	13
MAPLE SHADE TWP.	647	234	2	534	165	2	596	216	0	712	222	1	642	217	0	3,131	1,054	5
MEDFORD LAKES BORO.	144	13	0	149	18	0	40	13	0	40	5	0	29	6	0	402	55	0
MEDFORD TWP.	685	207	2	630	233	2	644	169	5	681	184	1	662	187	0	3,302	980	10
MOORESTOWN TWP.	700	261	1	678	268	4	667	241	0	697	256	1	687	236	2	3,429	1,262	8
MOUNT HOLLY TWP.	276	101	0	225	95	1	405	124	0	372	121	1	381	130	0	1,659	571	2
MOUNT LAUREL TWP.	1,328	545	4	1,402	510	6	1,327	489	8	1,341	501	1	1,432	598	8	6,830	2,643	27
NEW HANOVER TWP.	146	13	1	181	31	0	31	6	0	10	3	2	7	2	0	375	55	3
NORTH HANOVER TWP.	84	39	1	78	17	1	71	29	1	95	39	1	107	26	0	435	150	4
PALMYRA BORO.	192	68	0	172	62	0	184	51	0	217	74	0	213	56	0	978	311	0
PEMBERTON BORO.	114	20	2	81	16	0	75	20	1	59	17	1	15	0	0	344	73	4
PEMBERTON TWP.	504	208	4	479	228	4	582	243	0	618	241	0	630	260	2	2,813	1,180	10
RIVERSIDE TWP.	174	25	0	141	28	0	86	16	0	125	19	0	108	26	0	634	114	0
RIVERTON BORO.	24	4	0	16	5	0	34	4	0	34	17	0	20	10	0	128	40	0
SHAMONG TWP.	86	31	3	100	45	3	83	33	3	86	32	0	90	45	2	445	186	11
SOUTHAMPTON TWP.	357	147	5	384	134	1	401	183	1	385	184	2	371	155	7	1,898	803	16
SPRINGFIELD TWP.	316	111	5	306	144	2	366	109	0	352	137	3	361	135	2	1,701	636	12
TABERNACLE TWP.	149	55	0	161	60	1	110	49	1	108	41	1	105	45	2	633	250	5
WASHINGTON TWP.	50	16	0	58	17	0	52	23	0	66	20	0	60	24	1	286	100	1
WESTAMPTON TWP.	516	217	2	448	164	0	517	142	4	576	176	0	550	164	1	2,607	863	7
WILLINGBORO TWP.	760	225	2	714	241	4	706	252	0	648	201	1	631	193	1	3,459	1,112	8
WOODLAND TWP.	97	41	2	80	21	2	117	50	3	114	49	4	86	30	1	494	191	12
WRIGHTSTOWN BORO.	34	4	0	23	3	0	24	8	0	22	4	0	26	3	0	129	22	0
COUNTY-WIDE TOTALS	13,520	4,476	52	12,857	4,289	47	13,005	4,449	48	13,322	4,536	37	12,804	4,360	45	65,508	22,110	229

This bulletin provides an annual snapshot of road safety in Burlington County and its 40 municipalities. It highlights and compares trends at the state, county, and local levels. This document complements the 2011 Annual Crash Data Bulletin for the Delaware Valley (DVRPC Publication #13010) and is a supplement to the 2012 Transportation Safety Action Plan: Improving Transportation Safety in the Delaware Valley (DVRPC Publication #12030). Analysis in this document was derived from the NJDOT and PennDOT crash databases unless otherwise noted. For more information contact: Regina Moore at rmoore@dvrpc.org or 215.238.2862

