

**OPERATIONS  
FOR EIGHT  
NON-TOWERED  
AIRPORTS**



**JANUARY 2014**



# **2012/13 AIRCRAFT OPERATIONS COUNTING PROGRAM**

**CHESTER COUNTY**

**DOYLESTOWN**

**HERITAGE FIELD**

**PERKIOMEN  
VALLEY**

**POTTSTOWN  
MUNICIPAL**

**SOUTH JERSEY  
REGIONAL**

**SUMMIT**

**WINGS FIELD**

3-42-0125-013-2012



*The Delaware Valley Regional Planning Commission is dedicated to uniting the region's elected officials, planning professionals, and the public with a common vision of making a great region even greater. Shaping the way we live, work, and play, DVRPC builds consensus on improving transportation,*

*promoting smart growth, protecting the environment, and enhancing the economy. We serve a diverse region of nine counties: Bucks, Chester, Delaware, Montgomery, and Philadelphia in Pennsylvania; and Burlington, Camden, Gloucester, and Mercer in New Jersey. DVRPC is the federally designated Metropolitan Planning Organization for the Greater Philadelphia Region — leading the way to a better future.*



The symbol in our logo is adapted from the official DVRPC seal and is designed as a stylized image of the Delaware Valley. The outer ring symbolizes the region as a whole while the

diagonal bar signifies the Delaware River. The two adjoining crescents represent the Commonwealth of Pennsylvania and the State of New Jersey.

DVRPC is funded by a variety of funding sources including federal grants from the U.S. Department of Transportation's Federal Highway Administration (FHWA) and Federal Transit Administration (FTA), the Pennsylvania and New Jersey departments of transportation, as well as by DVRPC's state and local member governments. The authors, however, are solely responsible for the findings and conclusions herein, which may not represent the official views or policies of the funding agencies.

DVRPC fully complies with Title VI of the Civil Rights Act of 1964 and related statutes and regulations in all programs and activities. DVRPC's website ([www.dvrpc.org](http://www.dvrpc.org)) may be translated into multiple languages. Publications and other public documents can be made available in alternative languages and formats, if requested. For more information, please call (215) 238-2871.

### **Acknowledgements**

This report is funded by the U.S. Federal Aviation Administration (FAA) under Award Number 3-42-0125-012-2011

# Table of Contents

Executive Summary.....	1
<b>C H A P T E R 1</b>	
Annual Operations Summaries.....	3
■ Annual Aircraft Operations.....	4
■ Annual Fixed-Wing Operations.....	5
■ Annual Helicopter Operations.....	6
<b>C H A P T E R 2</b>	
Airport Activity Reports.....	7
■ Chester County Airport (MQS).....	8
■ Doylestown Airport (DYL).....	19
■ Heritage Field Airport (PTW).....	30
■ Perkiomen Valley Airport (N10).....	41
■ Pottstown Municipal Airport (N47).....	52
■ South Jersey Regional Airport (VAY).....	63
■ Summit Airport (EVY).....	74
■ Wings Field Airport (LOM).....	85

## Figures and Tables

Figure ES-1: Delaware Valley Regional Airport System.....	2
Figure 1: 2009/2010 Counts vs. 2012/2013 Counts.....	4
Figure 2: 2009/2010 Counts vs. 2012/2013 Counts.....	5
Figure 3: 2009/2010 Counts vs. 2012/2013 Counts.....	6
Figure 4: Chester County Airport (MQS) Aerial Photo.....	9
Figure 5: Chester County Airport (MQS) Seasonal Summary.....	10
Figure 6: Doylestown Airport (DYL) Aerial Photo.....	20
Figure 7: Doylestown Airport (DYL) Seasonal Summary.....	21
Figure 8: Heritage Field Airport (PTW) Aerial Photo.....	31
Figure 9: Heritage Field Airport (PTW) Seasonal Summary.....	32
Figure 10: Perkiomen Valley Airport (N10) Aerial Photo.....	42
Figure 11: Perkiomen Valley Airport (N10) Seasonal Summary.....	43
Figure 12: Pottstown Municipal Airport (N47) Aerial Photo.....	53
Figure 13: Pottstown Municipal Airport (N47) Seasonal Summary.....	54
Figure 14: South Jersey Regional Airport (VAY) Aerial Photo.....	64
Figure 15: South Jersey Regional Airport (VAY) Seasonal Summary.....	65

Figure 16: Summit Airport (EVY) Aerial Photo.....	75
Figure 17: Summit Airport (EVY) Seasonal Summary.....	76
Figure 18: Wings Field Airport (LOM) Aerial Photo .....	86
Figure 19: Wings Field Airport (LOM) Seasonal Summary.....	87
Table 1: 2009/2010 Counts vs. 2012/2013 Counts .....	4
Table 2: 2009/2010 Counts vs. 2012/2013 Counts .....	5
Table 3: 2009/2010 Counts vs. 2012/2013 Counts .....	6
Table 4: Chester County Airport (MQS) Based Aircraft.....	8
Table 5: Chester County Airport (MQS) Annual Summary.....	10
Table 6: Doylestown Airport (DYL) Based Aircraft.....	19
Table 7: Doylestown Airport (DYL) Annual Summary.....	21
Table 8: Heritage Field Airport (PTW) Based Aircraft.....	30
Table 9: Heritage Field Airport (PTW) Annual Summary.....	32
Table 10: Perkiomen Valley Airport (N10) Based Aircraft.....	41
Table 11: Perkiomen Valley Airport (N10) Annual Summary.....	43
Table 12: Pottstown Municipal Airport (N47) Based Aircraft.....	52
Table 13: Pottstown Municipal Airport (N47) Annual Summary.....	54
Table 14: South Jersey Regional Airport (VAY) Based Aircraft.....	63
Table 15: South Jersey Regional Airport (VAY) Annual Summary.....	65
Table 16: Summit Airport (EVY) Based Aircraft.....	74
Table 17: Summit Airport (EVY) Annual Summary.....	76
Table 18: Wings Field Airport (LOM) Based Aircraft.....	85
Table 19: Wings Field Airport (LOM) Annual Summary.....	87

## Executive Summary

The Delaware Valley Regional Planning Commission (DVRPC) has conducted aircraft operations counts at the non-towered airports in the 12-county, four-state Delaware Valley Regional Airport System Plan (RASP) since 1986 (see RASP map on page 2). In 2011, the Federal Aviation Administration (FAA) continued funding this program to include eight of the 20 non-towered facilities (all general aviation airports and all reliever airports except Northeast Philadelphia are non-towered). From April 2012 to March 2013, the following airports were surveyed: Chester County, Doylestown, Heritage Field, Perkiomen Valley, Pottstown Municipal, and Wings Field in Pennsylvania; South Jersey Regional in New Jersey; and Summit in Delaware.

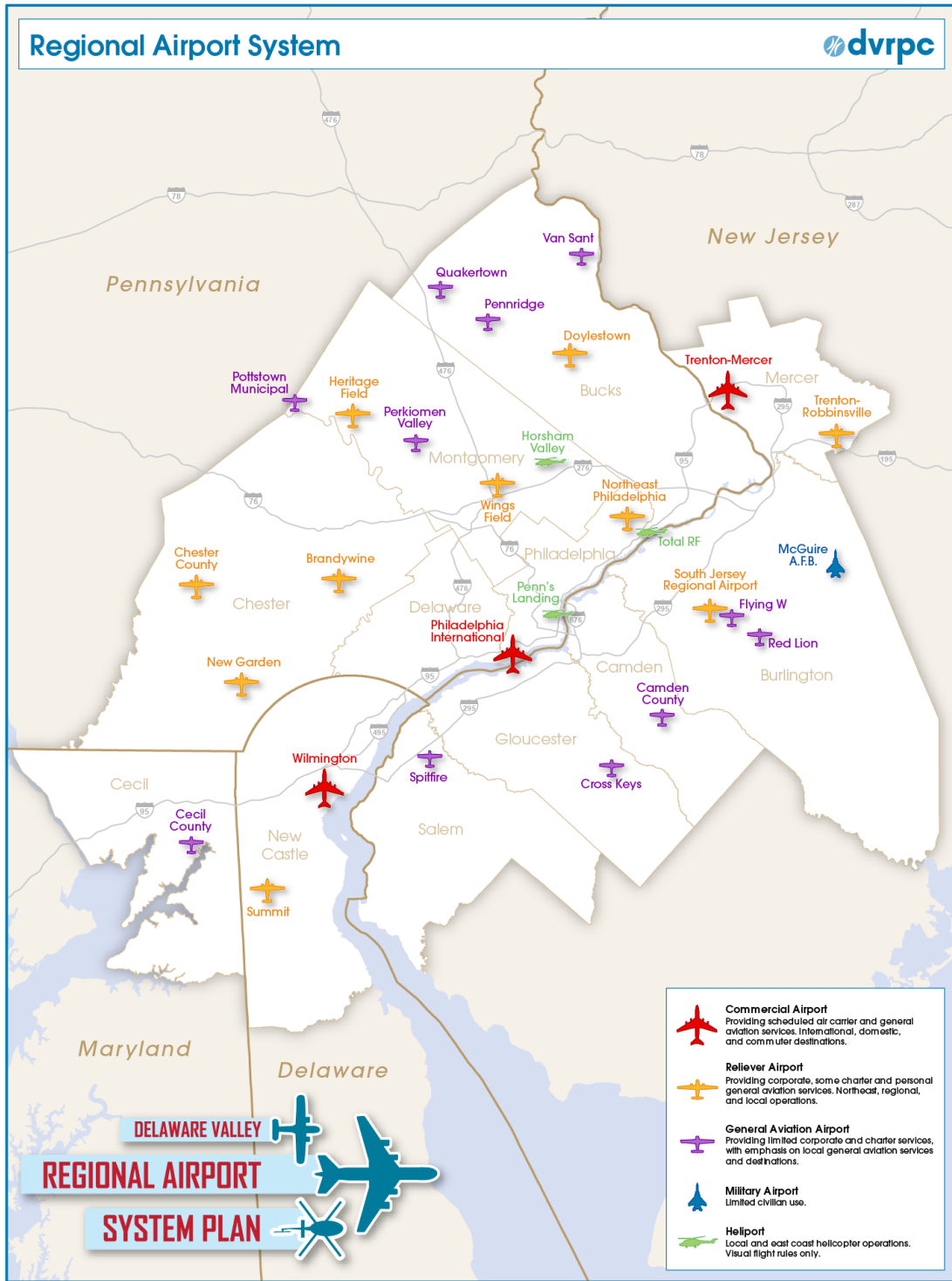
This report uses the Larson Davis Acoustic Counter Software to monitor weekly takeoff data at each airport for eight weeks apportioned throughout the year. This data is reviewed and compiled into Airport Activity Reports. The Airport Activity Reports are then used to project seasonal and annual takeoff and landing totals, as estimated by DVRPC counting software, for each surveyed airport during 2012/2013.

In the 2012/2013 counting period, there were 208,361 annual aircraft operations estimated for the eight regional airports. The DVRPC report for the same eight airports in the 2009/2010 counting program had 246,547 annual aircraft operations, which indicates a 15 percent decrease in total operations over a three-year period.

Historic counting data since 1986 is available through the DVRPC Office of Freight and Aviation Planning web site at [www.dvrpc.org/Aviation/AircraftTrafficCounts.htm](http://www.dvrpc.org/Aviation/AircraftTrafficCounts.htm)

2012/13 Aircraft Operations Counting Program

Figure ES-1: Delaware Valley Regional Airport System



## Annual Operations Summaries

As an integral part of its ongoing aviation planning efforts, the Delaware Valley Regional Planning Commission (DVRPC) has conducted aircraft operations counts at non-towered airports in a 12-county, four-state region since 1986. In 2011, the Federal Aviation Administration (FAA) continued funding this program to include eight of 20 DVRPC Regional Airport System Plan (RASP) facilities. From April 2012 to March 2013, the following airports were surveyed: Chester County, Doylestown, Heritage Field, Perkiomen Valley, Pottstown Municipal, and Wings Field in Pennsylvania; South Jersey Regional in New Jersey; and Summit in Delaware.

The Annual Operations Summaries provide tabular and graphical displays of annual aircraft operations for fixed-wing aircraft, helicopters, and their combined totals (see pp. 4-6). The data is projected based on the daily flight counts collected during eight one-week sampling periods throughout the year.

The following procedure is applied to all counts during the entire program. Eight one-week counting surveys are taken over the course of one year. These counting surveys are scheduled twice each season at four-to six-week intervals for each airport. Keeping the intervals between setting and resetting of the counters at each airport as consistent as possible ensures the most accurate statistical operations estimate. At the start of each interval, a DVRPC staff member selects a location near the airport runway to base an LDL 820 Sound Level Meter. The meter is activated by set minimum noise levels only during aircraft takeoff activity. The data collected is saved to the LDL 820 memory and the staff member retrieves the meter after each week of counts.

After equipment retrieval, the data is downloaded to the Aircraft Counting System software and then checked manually for event-related errors. The Aircraft Counting System report displays weekly aircraft takeoffs (since most propeller landings are nearly silent) by hour and day for each week counted. Finally, the data is entered into and extrapolated by DVRPC counting formulas, which estimate seasonal and annual total takeoffs and landings.

In the 2012/2013 counting period, there were 208,361 annual aircraft operations estimated for the eight regional airports. The DVRPC report for the same eight airports in the 2009/2010 counting program had 246,547 annual aircraft operations, which indicates a 15 percent decrease in total operations over a three-year period.

**2012/13 Aircraft Operations Counting Program**

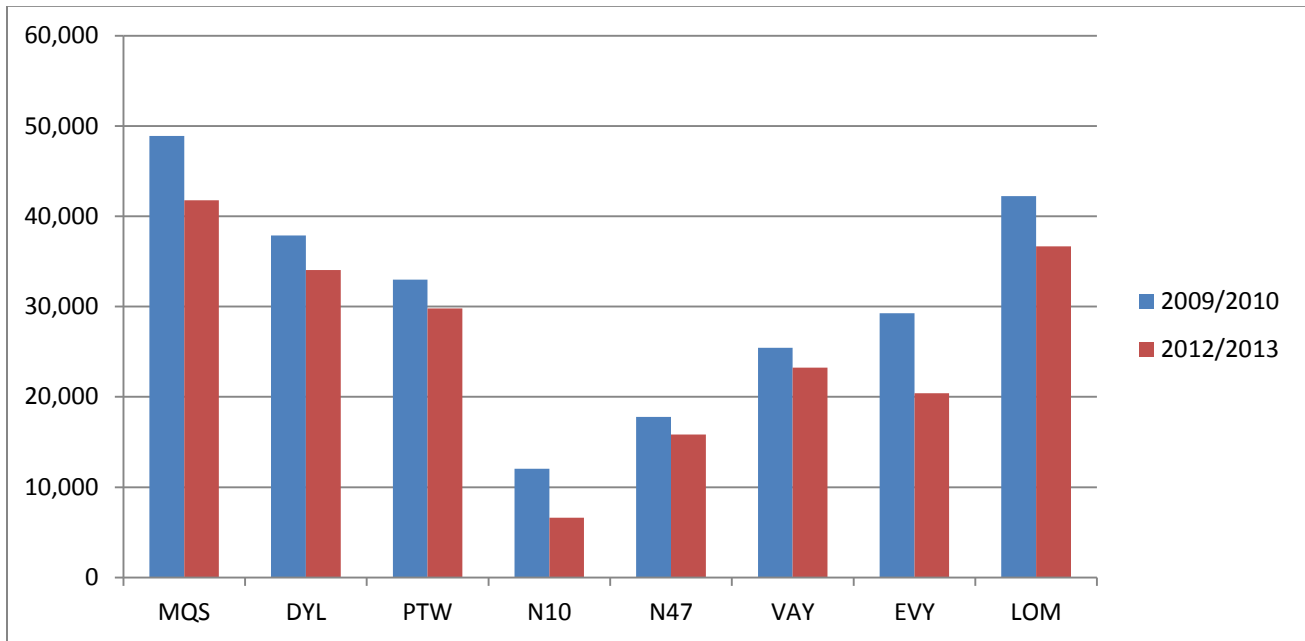
Annual Aircraft Operations

**Table 1: 2009/2010 Counts vs. 2012/2013 Counts**

Airport	2009/2010 Operations	2012/2013 Operations	Absolute Change	Percent Change
Chester County (MQS)	48,875	41,774	-7,101	-15%
Doylestown (DYL)	37,888	34,046	-3,842	-10%
Heritage Field (PTW)	32,981	29,795	-3,186	-10%
Perkiomen Valley (N10)	12,051	6,608	-5,443	-45%
Pottstown Municipal (N47)	17,798	15,848	-1,950	-11%
South Jersey Regional (VAY)	25,443	23,229	-2,214	-9%
Summit (EVY)	29,272	20,409	-8,863	-30%
Wings Field (LOM)	42,239	36,652	-5,587	-13%
<b>Total Operations</b>	<b>246,547</b>	<b>208,361</b>	<b>-38,186</b>	<b>-15%</b>

Source: DVRPC

**Figure 1: 2009/2010 Counts vs. 2012/2013 Counts**



Source: DVRPC



## 2012/13 Aircraft Operations Counting Program

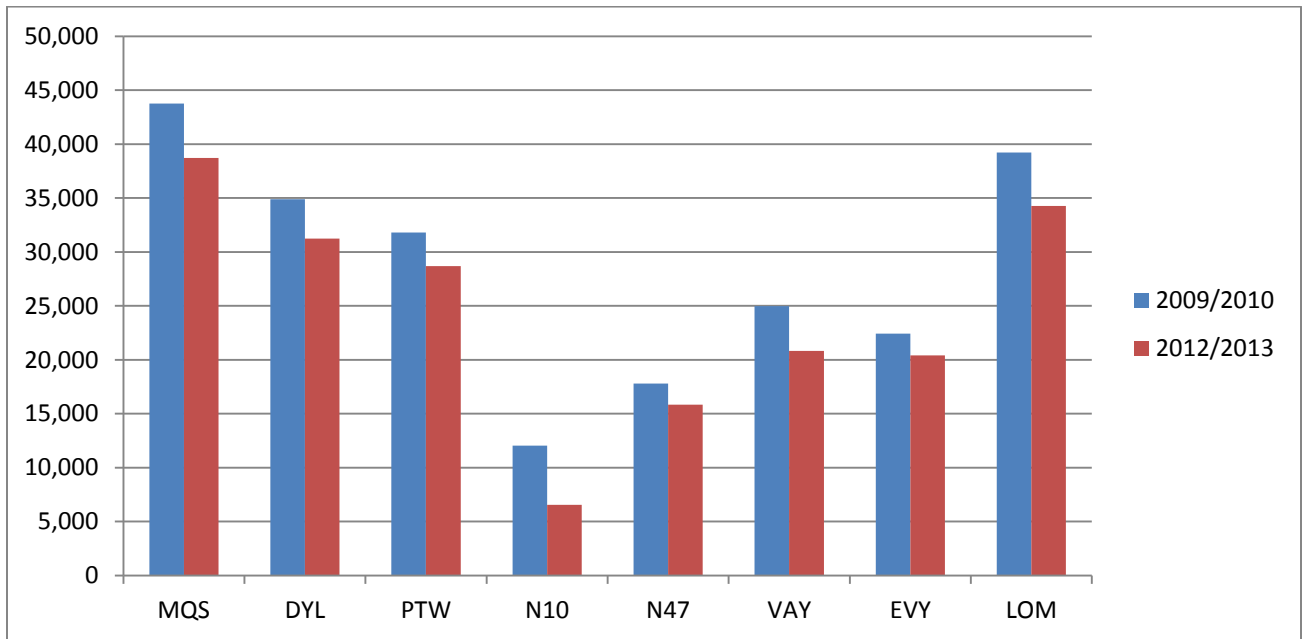
### Annual Fixed-Wing Operations

**Table 2: 2009/2010 Counts vs. 2012/2013 Counts**

Airport	2009/2010 Operations	2012/2013 Operations	Absolute Change	Percent Change
Chester County (MQS)	43,765	38,710	-5,055	-12%
Doylestown (DYL)	34,888	31,246	-3,642	-10%
Heritage Field (PTW)	31,799	28,683	-3,116	-10%
Perkiomen Valley (N10)	12,051	6,560	-5,491	-46%
Pottstown Municipal (N47)	17,798	15,848	-1,950	-11%
South Jersey Regional (VAY)	24,963	20,829	-4,134	-17%
Summit (EVY)	22,414	20,409	-2,005	-9%
Wings Field (LOM)	39,227	34,252	-4,975	-13%
<b>Total Operations</b>	<b>226,905</b>	<b>196,537</b>	<b>-30,368</b>	<b>-13%</b>

Source: DVRPC

**Figure 2: 2009/2010 Counts vs. 2012/2013 Counts**



Source: DVRPC

**2012/13 Aircraft Operations Counting Program**

Annual Helicopter Operations

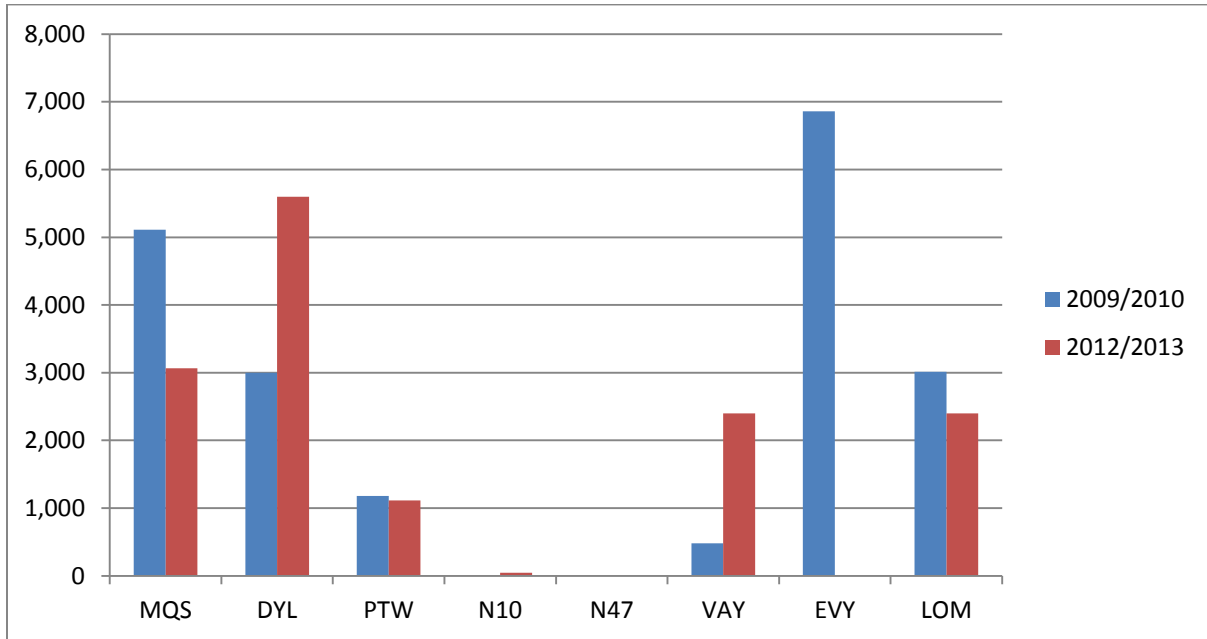
**Table 3: 2009/2010 Counts vs. 2012/2013 Counts**

Airport	2009/2010 Operations	2012/2013 Operations	Absolute Change*	Percent Change*
Chester County (MQS)	5,110	3,064	-2,046	-40%
Doylestown (DYL)	3,000	2,800	-200	-7%
Heritage Field (PTW)	1,182	1,112	-70	-6%
Perkiomen Valley (N10)	0	48	48	n/a
Pottstown Municipal (N47)	0	Not Available	n/a	n/a
South Jersey Regional (VAY)	480	2,400	1,920	400%
Summit (EVY)	6,858	Not Available	n/a	n/a
Wings Field (LOM)	3,012	2,400	-612	-20%
<b>Total Operations</b>	<b>19,642</b>	<b>11,824</b>	<b>-960</b>	<b>-8%</b>

\*Total Absolute Change and Total Percent Change excludes 2009/2010 figures for Summit, as current figures were not available

Source: DVRPC

**Figure 3: 2009/2010 Counts vs. 2012/2013 Counts**



Source: DVRPC

## Airport Activity Reports

This section of the report displays the weekly activity data collected during the eight-week counting surveys conducted for each of the eight individual airports. Each airport summary provides a brief narrative along with an inventory of based aircraft and an airport aerial photo. Airport activity summaries list estimated annual flight operations and a seasonal operations chart. Daily takeoffs collected from each airport are displayed in spreadsheet format by season, date, and time of day. Helicopter data is not collected by the Acoustic Counter Software devices, but is prorated from the annual estimate given by the airport operator at the completion of the counting cycle and is only expressed as a subtotal for each day.

All weekly activity data pages express only aircraft takeoffs and do not include the landing phase of flight due to the near silence of propeller landings. At the bottom of each weekly activity data page, subtotals of aircraft activity are also expressed as takeoffs only. In the activity summary at the beginning of each Airport Activity Report, takeoffs are converted into estimated annual and seasonal operations, which include takeoffs and landings, by the DVRPC counting software.

## Chester County Airport (MQS)

Chester County

Coatesville, PA 19320

Runway Orientation: 11/29

Runway Length: 5,400 ft.

**Table 4: Chester County Airport (MQS) Based Aircraft**

Based Aircraft Fleet Mix	
Single Engine	75
Multi-engine	10
Jet	28
Helicopter	1
Glider	0
Total	114

Source: Chester County Airport

Chester County G. O. Carlson Airport had a 15 percent decline in overall flight operations for this counting cycle. This is attributed to a reduction of 15 based aircraft and the current economic conditions. Sikorsky Aircraft Corporation is based adjacent to Chester County Airport and continues to contribute to overall flight operations and the local economy.

Chester County Airport continues to be one of the busiest non-towered airports in the region for business jets and turboprop aircraft and with its 5,400-foot runway, continues to be a strong part of the RASP reliever airports. With a modern terminal building, a flight school, and a full-service restaurant, the “Flying Machine Café,” Chester County Airport provides not only a service to aviation, but also to the local community.

Figure 4: Chester County Airport (MQS) Aerial Photo



Aerial Imagery: DVRPC, 2010

**2012/13 Aircraft Operations Counting Program**

---

**DVRPC Aircraft Counting Program**

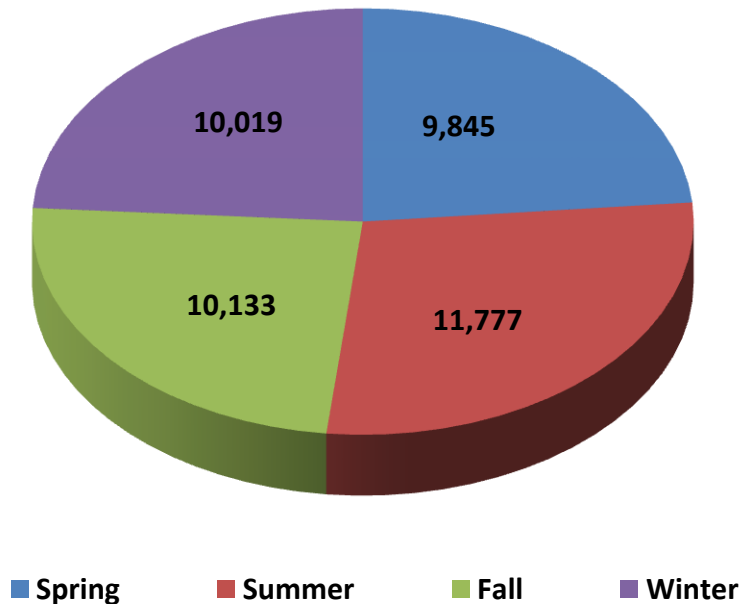
Airport: Chester County Airport (MQS)

County: Chester

**Table 5: Chester County Airport (MQS) Annual Summary**

Season	Year	Average Daily Operations	Total Operations	Percentage of Annual Operations
Spring	2012	106	9,845	24%
Summer	2012	125	11,777	28%
Fall	2012	114	10,133	24%
Winter	2013	113	10,019	24%
<b>Annual Operations: 2012/13</b>			<b>41,774</b>	
Margin of Error: 10 at 95% confidence				
Source: DVRPC				

**Figure 5: Chester County Airport (MQS) Seasonal Summary**



Source: DVRPC

## 2012/13 Aircraft Operations Counting Program

---

Weekly Activity Report  
 MQS Chester County Airport  
 MQS Spring I 2012

For: 26 April 2012 - 02 May 2012

Day->	Thurs 26-Apr	Fri 27-Apr	Sat 28-Apr	Sun 29-Apr	Mon 30-Apr	Tues 1-May	Wed 2-May
12 am							
1 am							
2 am							
3 am							
4 am							
5 am							
6 am	2		2		3		
7 am	3	4	4		3	1	4
8 am	3	2	2	2	3		3
9 am	1	2	11	6	4		3
10 am	5	1	12	12	11	3	
11 am	2	11	14	11	6	1	2
12 pm	2	6	10	10	3	2	3
1 pm	2	8	13	6	4		4
2 pm	5	2	6	6	5	2	3
3 pm	2	1	5	2	8	5	7
4 pm	1	4	3	2	5	2	5
5 pm		3	2	4	5	6	2
6 pm	2	3	3	2	5	7	1
7 pm		3			2	5	1
8 pm		1	1	1	1	1	
9 pm							
10 pm							
11 pm				2	1		
<b>Daily</b>							
Prorated Helicopter Takeoffs	1	1	1		1	1	1
Total Aircraft Takeoffs	31	52	89	66	70	36	39
<b>Weekly</b>							
Prorated Helicopter Takeoffs	6						
Fixed-wing Takeoffs	377						
Total Aircraft Takeoffs	383						

Source: DVRPC

## 2012/13 Aircraft Operations Counting Program

---

Weekly Activity Report                      For: 1 June 2012 - 7 June 2012  
 MQS Chester County Airport  
 MQS Spring II 2012

Day->	Fri 1-Jun	Sat 2-Jun	Sun 3-Jun	Mon 4-Jun	Tues 5-Jun	Wed 6-Jun	Thurs 7-Jun
12 am	1					1	
1 am							
2 am							
3 am							
4 am							
5 am	1			1	1		1
6 am	2			1	1		1
7 am	1	2			4	1	
8 am	1	4	1	4	1		3
9 am		4	9	2		7	13
10 am	1	6	10	8	3	7	8
11 am	5	7		6	2	1	3
12 pm	2	8	6	2	6	3	11
1 pm	3	6	6	3	2	1	9
2 pm	6	5	2	2	1	1	6
3 pm	1		5	2	3	1	9
4 pm	4	3	3	2		7	1
5 pm			4		7	9	5
6 pm		1			8	10	8
7 pm	1		3	1	8	8	
8 pm				1	2	4	
9 pm		2				1	
10 pm					1		
11 pm					1		
<b>Daily</b>							
Prorated Helicopter Takeoffs	1	1		1	1	1	1
Total Aircraft Takeoffs	30	49	49	36	52	63	79
<b>Weekly</b>							
Prorated Helicopter Takeoffs	6						
Fixed-wing Takeoffs	352						
Total Aircraft Takeoffs	358						

Source: DVRPC



## 2012/13 Aircraft Operations Counting Program

---

Weekly Activity Report  
 MQS Chester County Airport  
 MQS Summer I 2012

For: 25 July 2012 - 31 July 2012

Day->	Wed 25-Jul	Thurs 26-Jul	Fri 27-Jul	Sat 28-Jul	Sun 29-Jul	Mon 30-Jul	Tues 31-Jul
12 am							
1 am							
2 am							
3 am							
4 am							
5 am			1			1	
6 am	1		1	2		1	
7 am	5	2	1	2		3	1
8 am	6	1	1	3		2	1
9 am	7	5	6	8			2
10 am	9	1	10	2		2	1
11 am	3	1	4	4	3	4	2
12 pm	7	3	10	4	7	2	5
1 pm	10	3	1	6	6	11	1
2 pm	5	2	1	5	3	1	2
3 pm	6	6	8	3	3	2	6
4 pm	6	6	10	2	4	4	3
5 pm	7	9	4	2	3	1	7
6 pm	6	3	1		4	5	11
7 pm	6	5	2		4	3	4
8 pm	3	2	3		1	1	
9 pm	1	1				2	
10 pm	1						
11 pm			2				

**Daily**

Prorated Helicopter Takeoffs	5	5	5	5	5	6	6
Total Aircraft Takeoffs	94	55	71	48	43	51	52

**Weekly**

Prorated Helicopter Takeoffs	37
Fixed-wing Takeoffs	377

Total Aircraft Takeoffs 414

Source: DVRPC

## 2012/13 Aircraft Operations Counting Program

---

Weekly Activity Report  
 MQS Chester County Airport  
 MQS Summer II 2012

For: 6 September 2012 - 12 September 2012

Day->	Thurs 6-Sep	Fri 7-Sep	Sat 8-Sep	Sun 9-Sep	Mon 10-Sep	Tues 11-Sep	Wed 12-Sep
12 am							
1 am							
2 am							
3 am							
4 am							
5 am							1
6 am	1	3	1		1	3	8
7 am	2	2			3		4
8 am	3	2		2	6	2	19
9 am	11	3	3	9	8	3	4
10 am	6	7		5	10	2	2
11 am	2	8	4	13		9	5
12 pm	5	2	2	9	6	3	3
1 pm	5	3	2	12	4	6	5
2 pm	3	3	2	11	2	4	5
3 pm	5	7	9	11	3	3	6
4 pm	4	6	6	9	5	6	5
5 pm	2	5	8	4	3	4	1
6 pm	1	3	4	2		3	3
7 pm		1	2	4		7	
8 pm	4	1			1	2	
9 pm					1		
10 pm						1	
11 pm							

**Daily**

Prorated Helicopter Takeoffs	5	5	5	5	6	6	5
Total Aircraft Takeoffs	59	61	48	96	59	64	76

**Weekly**

Prorated Helicopter Takeoffs	37
Fixed-wing Takeoffs	426
Total Aircraft Takeoffs	463

Source: DVRPC

## 2012/13 Aircraft Operations Counting Program

---

Weekly Activity Report                      For: 22 October 2012 - 28 October 2012  
 MQS Chester County Airport  
 MQS Fall I 2012

Day->	Mon 22-Oct	Tues 23-Oct	Wed 24-Oct	Thurs 25-Oct	Fri 26-Oct	Sat 27-Oct	Sun 28-Oct
12 am			1				
1 am							
2 am							
3 am							
4 am							
5 am							
6 am							
7 am	1				1	5	
8 am	3	2	7	2	3	4	1
9 am	2	2	2	1	1	2	
10 am	5	2	10	4	3	3	1
11 am	4	2	8	3	2	5	4
12 pm	3	2	4	6	3	5	5
1 pm	3	2	3	2	3	7	10
2 pm	11	5	6	2	4	4	5
3 pm	9	1	6	7	10	5	8
4 pm	1	3	10	1	7	1	6
5 pm	6	5	9	3	3	3	3
6 pm	5	5	1	3	1	5	4
7 pm	2	3	1	1	3	1	2
8 pm		2	2		2		
9 pm			3	2			
10 pm						1	
11 pm							

**Daily**

Prorated Helicopter Takeoffs	4	4	4	4	4	4	3
Total Aircraft Takeoffs	59	40	77	41	50	55	52

**Weekly**

Prorated Helicopter Takeoffs	27
Fixed-wing Takeoffs	347
 Total Aircraft Takeoffs	 374

Source: DVRPC

## 2012/13 Aircraft Operations Counting Program

---

Weekly Activity Report  
 MQS Chester County Airport  
 MQS Fall II 2012

For: 11 December 2012 - 17 December 2012

Day->	Tues 11-Dec	Wed 12-Dec	Thurs 13-Dec	Fri 14-Dec	Sat 15-Dec	Sun 16-Dec	Mon 17-Dec
12 am							
1 am							
2 am							
3 am							
4 am							
5 am					1		
6 am		1	1				
7 am		2		1			1
8 am	1	3	3	2	2	2	3
9 am	2	6	1	2	13	1	3
10 am	4	7	5	4	13	1	4
11 am	3	2	4	8	10	5	2
12 pm	2	1	2	10	18	5	6
1 pm	6	5	12	2	14		7
2 pm	3	2	17	2	14		4
3 pm	3	5	8	7	22	1	2
4 pm	2	2	4	4	6	2	2
5 pm	1	2	2	4	8	3	1
6 pm	12	4	2	1	2	1	1
7 pm	3	3		1	2		3
8 pm	1	2	2			1	1
9 pm		2	2	1			
10 pm	1						
11 pm				1	1		

**Daily**

Prorated Helicopter Takeoffs	4	4	4	4	4	3	4
Total Aircraft Takeoffs	48	53	69	54	130	25	44

**Weekly**

Prorated Helicopter Takeoffs	27
Fixed-wing Takeoffs	396
Total Aircraft Takeoffs	423

Source: DVRPC

## 2012/13 Aircraft Operations Counting Program

---

Weekly Activity Report  
 MQS Chester County Airport  
 MQS Winter I 2013

For: 1 February 2013 - 7 February 2013

Day->	Fri 1-Feb	Sat 2-Feb	Sun 3-Feb	Mon 4-Feb	Tues 5-Feb	Wed 6-Feb	Thurs 7-Feb
12 am							
1 am							
2 am							
3 am							
4 am			1				
5 am						3	
6 am			1	1	1	3	1
7 am	1			2		3	
8 am	1	1	3	2	2	2	2
9 am	1	5	5	1	1	1	2
10 am	1	19	7	2	1	3	4
11 am	2	17	4	3	2	3	1
12 pm	2	16	4	2	3	6	1
1 pm	3	13	7	2	1	2	3
2 pm	2	4	10	5	1	1	1
3 pm	1	2	11	4	3	2	5
4 pm	3	3	7	3	3	8	2
5 pm	4	3	3	1	1	8	4
6 pm	1	1	2	1	1	2	3
7 pm			3	1	8	2	1
8 pm	1		1		1	4	
9 pm			1				1
10 pm	1						
11 pm							

**Daily**

Prorated Helicopter Takeoffs	7	7	6	7	7	7	7
Total Aircraft Takeoffs	31	91	76	37	36	60	38

**Weekly**

Prorated Helicopter Takeoffs	48
Fixed-wing Takeoffs	321
 Total Aircraft Takeoffs	 369

Source: DVRPC

## 2012/13 Aircraft Operations Counting Program

---

Weekly Activity Report  
 MQS Chester County Airport  
 MQS Winter II 2013

For: 8 March 2013 - 14 March 2013

Day->	Fri 8-Mar	Sat 9-Mar	Sun 10-Mar	Mon 11-Mar	Tues 12-Mar	Wed 13-Mar	Thurs 14-Mar
12 am	1						
1 am							
2 am							
3 am							
4 am				1		1	
5 am		1					
6 am	1		3	1	1	1	
7 am	1	5	3	2	1	4	2
8 am	3	2	5		1	1	3
9 am	3	7	11	3	3	5	2
10 am	1	10	16	1	4	11	1
11 am	1	14	12		1	5	1
12 pm	2	10	4	2	1	9	2
1 pm	4	8	9	9	1	1	1
2 pm	3	15	6	4	5	2	1
3 pm	7	9	6	6	4	6	1
4 pm	3	7	12	1	1	1	2
5 pm	2	7	6	2	2	4	2
6 pm	1	1	3	1	1		
7 pm		1	1	1	1		1
8 pm		2	2				1
9 pm	2	1		1			
10 pm	2						1
11 pm	1						

**Daily**

Prorated Helicopter Takeoffs	7	7	6	7	7	7	7
Total Aircraft Takeoffs	45	107	105	42	34	58	28

**Weekly**

Prorated Helicopter Takeoffs	48
Fixed-wing Takeoffs	371
 Total Aircraft Takeoffs	 419

Source: DVRPC

---

## 2012/13 Aircraft Operations Counting Program

---

### Doylestown Airport (DYL)

**Bucks County**

**Doylestown, PA 18901**

Runway Orientation: 05/23

Runway Length: 3,004 ft.

**Table 6: Doylestown Airport (DYL) Based Aircraft**

Based Aircraft Fleet Mix	
Single Engine	166
Multi-engine	12
Jet	0
Helicopter	3
Glider	0
Total	181

Source: Doylestown Airport

Doylestown Airport flight operations are 10 percent lower than those reported three years ago. While based aircraft have increased to 181 from 177, the reduction in flight operations is on par with the rest of the airports in the region.

Leading Edge Aviation is the fixed base operator (FBO) at Doylestown Airport and offers an active flight school, Aero Summer Camp, aircraft maintenance services, aircraft rental fleet, and aircraft charter operations—all of which contribute to overall flight operations and the long-term stability of this airport.

Doylestown Airport remains an important reliever airport within the RASP, and the current moderate flight operations decline should recover as the economy recovers.

Figure 6: Doylestown Airport (DYL) Aerial Photo





**2012/13 Aircraft Operations Counting Program**

---

**DVRPC Aircraft Counting Program**

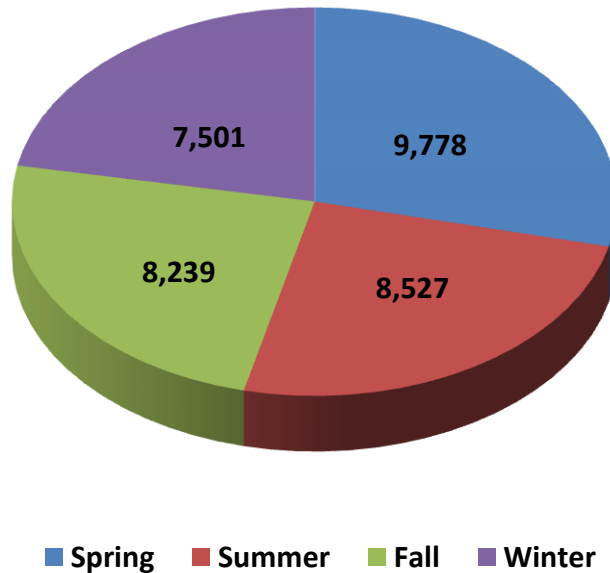
Airport: Doylestown Airport (DYL)

County: Bucks

**Table 7: Doylestown Airport (DYL) Annual Summary**

Season	Year	Average Daily Operations	Total Operations	Percentage of Annual Operations
Spring	2012	105	9,778	29%
Summer	2012	91	8,527	25%
Fall	2012	93	8,239	24%
Winter	2013	84	7,501	22%
<b>Annual Operations:</b>		<b>2012/13</b>	<b>32,695</b>	
Margin of Error: 11 at 95% confidence				
Source: DVRPC				

**Figure 7: Doylestown Airport (DYL) Seasonal Summary**



Source: DVRPC

## 2012/13 Aircraft Operations Counting Program

---

Weekly Activity Report  
 DYL Doylestown Airport  
 DYL Spring I 2012

For: 9 April 2012 - 15 April 2012

Day->	Mon 9-Apr	Tues 10-Apr	Wed 11-Apr	Thurs 12-Apr	Fri 13-Apr	Sat 14-Apr	Sun 15-Apr
12 am							
1 am							
2 am							
3 am							
4 am							
5 am							
6 am					1		1
7 am				2		1	2
8 am			3	5	5	12	5
9 am	1	3	3	5	11	15	8
10 am	3	4	4	3	7	12	4
11 am	2	1	1	3	5	11	5
12 pm	1	2	6		11	14	4
1 pm	3	2	2		9	4	6
2 pm	3	3		6	11	7	5
3 pm	1	2	2	1	4	1	6
4 pm	4	1	6	3	10	4	4
5 pm	2	1	2	1	9	3	5
6 pm	1	2	1	2	12		3
7 pm		1		6	4	1	1
8 pm	1		1	8			1
9 pm							
10 pm					1		
11 pm							

**Daily**

Prorated Helicopter Takeoffs	4	4	4	4	3	4	4
Total Aircraft Takeoffs	26	26	35	49	103	89	64

**Weekly**

Prorated Helicopter Takeoffs	27
Fixed-wing Takeoffs	365
Total Aircraft Takeoffs	392

Source: DVRPC

## 2012/13 Aircraft Operations Counting Program

---

Weekly Activity Report  
 DYL Doylestown Airport  
 DYL Spring II 2012

For: 18 May 2012 - 24 May 2012

Day->	Fri 18-May	Sat 19-May	Sun 20-May	Mon 21-May	Tues 22-May	Wed 23-May	Thurs 24-May
12 am							
1 am							
2 am							
3 am							
4 am							
5 am							
6 am		1					1
7 am		2	3			1	
8 am	1	2	3	2		2	1
9 am		15	6	1	1	3	3
10 am	2	12	12	3	2		3
11 am	2	11	8	1	3	3	1
12 pm	5	15	5	5	7	5	5
1 pm	2	9	6	1	9	2	6
2 pm	1	7	4	3		1	3
3 pm	3	8	4	1		1	2
4 pm	9	3	3	2		5	1
5 pm	9	3		1		1	2
6 pm	2	3	1	1		2	2
7 pm	4	6	4			2	
8 pm	2	1	3				
9 pm			12				
10 pm			1				
11 pm	1						
<b>Daily</b>							
Prorated Helicopter Takeoffs	4	3	4	4	4	4	4
Total Aircraft Takeoffs	47	101	79	25	26	32	34
<b>Weekly</b>							
Prorated Helicopter Takeoffs	27						
Fixed-wing Takeoffs	317						
Total Aircraft Takeoffs	344						

Source: DVRPC

## 2012/13 Aircraft Operations Counting Program

---

Weekly Activity Report  
 DYL Doylestown Airport  
 DYL Summer I 2012

For: 12 July 2012 - 18 July 2012

Day->	Thurs 12-Jul	Fri 13-Jul	Sat 14-Jul	Sun 15-Jul	Mon 16-Jul	Tues 17-Jul	Wed 18-Jul
12 am		1					
1 am							
2 am							
3 am							
4 am							
5 am						1	
6 am							1
7 am	1	2			5	2	
8 am		3	2		4	1	
9 am	1	4	2	1	4	4	6
10 am		5	8		1	2	1
11 am	2	6	4	1		4	5
12 pm	3	11	6	4	3	6	4
1 pm	3	5	2	6	6	2	3
2 pm	1	13	7	2	2	2	1
3 pm	2	2	4	3	1		1
4 pm	1	4		4	1	3	2
5 pm	3	4	6	3	1	3	1
6 pm	3	4	2	5	5	2	2
7 pm	5	1		1	3	1	3
8 pm	2	1			2		2
9 pm						3	1
10 pm					3		
11 pm					1	3	

**Daily**

Prorated Helicopter Takeoffs	4	3	4	4	4	4	4
Total Aircraft Takeoffs	31	69	47	34	46	43	37

**Weekly**

Prorated Helicopter Takeoffs	27
Fixed-wing Takeoffs	280
 Total Aircraft Takeoffs	 307

Source: DVRPC

## 2012/13 Aircraft Operations Counting Program

---

Weekly Activity Report  
 DYL Doylestown Airport  
 DYL Summer II 2012

For: 23 August 2012 - 29 August 2012

Day->	Thurs 23-Aug	Fri 24-Aug	Sat 25-Aug	Sun 26-Aug	Mon 27-Aug	Tues 28-Aug	Wed 29-Aug
12 am							
1 am							
2 am							
3 am							
4 am							
5 am		1			1		
6 am	1					1	
7 am	1	1	1	1	2	2	
8 am	1	2	4	2	4	5	3
9 am	2	4	10	1	5	1	3
10 am	1	4	4	15	8	6	6
11 am	3	10	11	2	1	1	5
12 pm	4	4	4	2	3	4	3
1 pm	2	2	7	3	1	2	2
2 pm	7		3	6	3	3	3
3 pm	4	3	3	5		2	1
4 pm	1	9	5	2	1	1	1
5 pm	5	6	2	2	1	1	2
6 pm	6	8	1				1
7 pm	5	2		1	2	2	3
8 pm	1	4				2	
9 pm						2	
10 pm							
11 pm							

**Daily**

Prorated Helicopter Takeoffs	4	3	4	4	4	4	4
Total Aircraft Takeoffs	48	63	59	46	36	39	37

**Weekly**

Prorated Helicopter Takeoffs	27
Fixed-wing Takeoffs	301
<b>Total Aircraft Takeoffs</b>	<b>328</b>

Source: DVRPC

## 2012/13 Aircraft Operations Counting Program

---

Weekly Activity Report  
 DYL Doylestown Airport  
 DYL Fall I 2012

For: 11 October 2012 - 17 October 2012

Day->	Thurs 11-Oct	Fri 12-Oct	Sat 13-Oct	Sun 14-Oct	Mon 15-Oct	Tues 16-Oct	Wed 17-Oct
12 am							
1 am							
2 am							
3 am							
4 am			1				
5 am							
6 am					1	1	
7 am	1	1	1		1		
8 am		3	3	2			5
9 am	2	2	7	4	2	2	4
10 am	1	2	2	1		1	1
11 am	5	1	6	1	1	1	8
12 pm	3	1	4	4	5		3
1 pm	2	1	7	16	1	2	4
2 pm	3	1	8	3	2	2	4
3 pm	2	1	8	8	1	1	2
4 pm	8		19	3	2	1	2
5 pm	9	2	8	3	3	1	10
6 pm	2	4		2	2		1
7 pm		1		3		1	1
8 pm	1	1	1	1	1		
9 pm							
10 pm		1					
11 pm							

**Daily**

Prorated Helicopter Takeoffs	4	4	3	4	4	4	4
Total Aircraft Takeoffs	43	26	78	55	26	17	49

**Weekly**

Prorated Helicopter Takeoffs	27
Fixed-wing Takeoffs	267
 Total Aircraft Takeoffs	 294

Source: DVRPC

## 2012/13 Aircraft Operations Counting Program

---

Weekly Activity Report  
 DYL Doylestown Airport  
 DYL Fall II 2012

For: 9 November 2012 - 15 November 2012

Day->	Fri 9-Nov	Sat 10-Nov	Sun 11-Nov	Mon 12-Nov	Tues 13-Nov	Wed 14-Nov	Thurs 15-Nov
12 am			1				
1 am							
2 am							
3 am							
4 am							
5 am							
6 am	1					1	1
7 am	1	3			2	1	
8 am	2	5		1		2	7
9 am	1	9			2		6
10 am	1	5	8	1	4	1	4
11 am	4	13	7		3	6	7
12 pm	3	3	5	9	2	3	3
1 pm	4	4	6	13	3	4	
2 pm	1	7	8	2	3	6	5
3 pm	1	11	11	5	2	7	7
4 pm	2	5	12	3	4	5	3
5 pm	1	5	8	1	3		1
6 pm	2	2	1	2	1		2
7 pm	3		1	1		1	
8 pm			2	2			2
9 pm				1		1	
10 pm		1			1		
11 pm							

**Daily**

Prorated Helicopter Takeoffs	4	3	4	4	4	4	4
Total Aircraft Takeoffs	31	76	74	45	34	42	52

**Weekly**

Prorated Helicopter Takeoffs	27
Fixed-wing Takeoffs	327
 Total Aircraft Takeoffs	 354

Source: DVRPC

## 2012/13 Aircraft Operations Counting Program

---

Weekly Activity Report  
 DYL Doylestown Airport  
 DYL Winter I 2013

For: 18 January 2013 - 24 January 2013

Day->	Fri 18-Jan	Sat 19-Jan	Sun 20-Jan	Mon 21-Jan	Tues 22-Jan	Wed 23-Jan	Thurs 24-Jan
12 am							
1 am							
2 am							
3 am							
4 am							
5 am							
6 am					1		1
7 am	1		1		1	1	3
8 am	3	2	4	3	3	2	3
9 am	3	4	3	1	3	4	3
10 am	2	9	11	1	1	5	8
11 am	1	2	7	6	3	1	3
12 pm	1	6	3	13	2	3	2
1 pm	2	2	2	9	5	5	3
2 pm	2	6	5	3	2	1	1
3 pm	2	8	3	1	1	3	3
4 pm	1	4	1	8	1	3	1
5 pm	3	7	1	4	3	2	
6 pm	2			1	2		
7 pm							
8 pm							
9 pm							
10 pm	1						
11 pm							
<b>Daily</b>							
Prorated Helicopter Takeoffs	4	3	4	4	4	4	4
Total Aircraft Takeoffs	28	53	45	54	32	34	35
<b>Weekly</b>							
Prorated Helicopter Takeoffs	27						
Fixed-wing Takeoffs	254						
Total Aircraft Takeoffs	281						

Source: DVRPC



## 2012/13 Aircraft Operations Counting Program

---

Weekly Activity Report  
 DYL Doylestown Airport  
 DYL Winter II 2013

For: 13 February 2013 - 19 February 2013

Day->	Wed 13-Feb	Thurs 14-Feb	Fri 15-Feb	Sat 16-Feb	Sun 17-Feb	Mon 18-Feb	Tues 19-Feb
12 am							
1 am							
2 am							
3 am							
4 am							
5 am							
6 am							
7 am			1				1
8 am	4	3	1		1		
9 am	15	2	4	2	1		6
10 am	9	2	8	10	3	1	5
11 am	5	5	9	13	3	2	1
12 pm		2	6	10	1	3	4
1 pm	3		6	3	2	4	2
2 pm	7	5	9	13	5	4	5
3 pm		2	6	4	7	4	2
4 pm		4	3	5	3	3	3
5 pm	1		4	5	3	5	1
6 pm	1	1	1		1		
7 pm						1	
8 pm			1				
9 pm							
10 pm							
11 pm							
<b>Daily</b>							
Prorated Helicopter Takeoffs	4	4	4	3	4	4	4
Total Aircraft Takeoffs	49	30	63	68	34	31	34
<b>Weekly</b>							
Prorated Helicopter Takeoffs	27						
Fixed-wing Takeoffs	282						
Total Aircraft Takeoffs	309						

Source: DVRPC

**2012/13 Aircraft Operations Counting Program**

**Heritage Field Airport (PTW)**

**Montgomery County**

**Limerick, PA 19464**

Runway Orientation: 10/28

Runway Length: 3,371 ft.

**Table 8: Heritage Field Airport (PTW) Based Aircraft**

Based Aircraft Fleet Mix	
Single Engine	92
Multi-engine	13
Jet	2
Helicopter	3
Glider	1
Total	111

Source: Heritage Field Airport

Heritage Field had a decline in overall flight operations of 10 percent during this survey period. This decline is in line with the other airports surveyed during this same time period. While based aircraft declined slightly from the 116 reported three years ago to 111 for this year, it had little impact on the overall flight operations, which should recover as the economy expands.

Heritage Field offers flight training through two flight schools: Fare Share Ltd. and Limerick Flight Center. In addition, Heritage Field is home to an active Experimental Aircraft Association (EAA) chapter, which has several popular fly-in breakfast events each year.

Heritage Field is a major component in the RASP and is expected to continue its success in the coming years.

**2012/13 Aircraft Operations Counting Program**

**Figure 8: Heritage Field Airport (PTW) Aerial Photo**



**2012/13 Aircraft Operations Counting Program**

---

**DVRPC Aircraft Counting Program**

Airport: Heritage Field Airport (PTW)

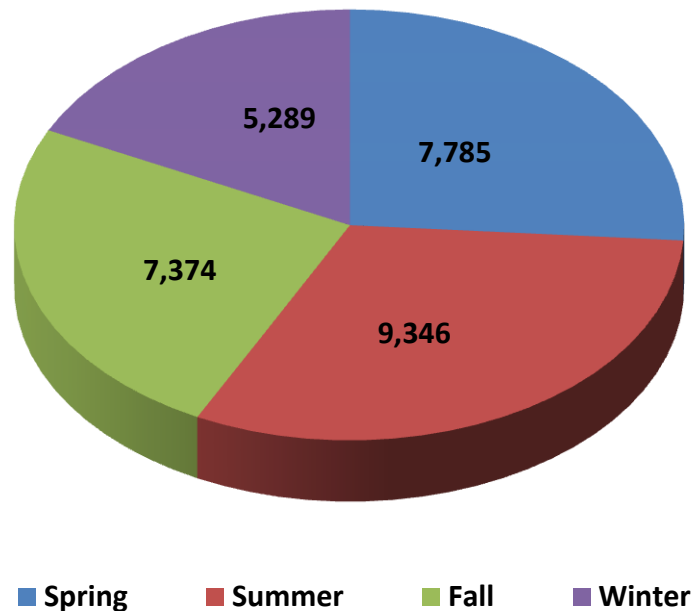
County: Montgomery

**Table 9: Heritage Field Airport (PTW) Annual Summary**

Season	Year	Average Daily Operations	Total Operations	Percentage of Annual Operations
Spring	2012	84	7,785	26%
Summer	2012	99	9,346	31%
Fall	2012	83	7,374	25%
Winter	2013	59	5,289	18%
<b>Annual Operations:</b>		<b>2012/13</b>	<b>29,795</b>	

Margin of Error: 10 at 95% confidence  
Source: DVRPC

**Figure 9: Heritage Field Airport (PTW) Seasonal Summary**



Source: DVRPC

## 2012/13 Aircraft Operations Counting Program

---

Weekly Activity Report  
PTW Heritage Field  
PTW Spring I 2012

For: 26 April 2012 - 2 May 2012

Day->	Thurs 26-Apr	Fri 27-Apr	Sat 28-Apr	Sun 29-Apr	Mon 30-Apr	Tues 1-May	Wed 2-May
12 am		2					
1 am		2	1				
2 am		4	5			5	
3 am		1					
4 am							
5 am							
6 am			1		1		
7 am							1
8 am	2	4	6	4	3	1	2
9 am	2	1	6	5	3		3
10 am	4	3	5	7	1	1	1
11 am	3	1	3	7	9	2	5
12 pm	3	3	7	5	1	3	3
1 pm	2	5	6	7	5	3	2
2 pm	5	1	12	3	5	4	1
3 pm	3	2	3	8		3	4
4 pm	2	1	4	25	1	1	3
5 pm	1	1	3	3	6	2	3
6 pm	3	3	3	2		4	1
7 pm		1	5	1		1	2
8 pm	1					2	
9 pm							
10 pm							
11 pm		1			1	2	
<b>Daily</b>							
Prorated Helicopter Takeoffs	1	1			1	1	1
Total Aircraft Takeoffs	32	37	70	77	37	35	32
<b>Weekly</b>							
Prorated Helicopter Takeoffs	5						
Fixed-wing Takeoffs	315						
Total Aircraft Takeoffs	320						

Source: DVRPC

## 2012/13 Aircraft Operations Counting Program

---

Weekly Activity Report  
 PTW Heritage Field  
 PTW Spring II 2012

For: 31 May 2012 - 6 June 2012

Day->	Thurs 31-May	Fri 1-Jun	Sat 2-Jun	Sun 3-Jun	Mon 4-Jun	Tues 5-Jun	Wed 6-Jun
12 am							
1 am		1					
2 am		2	2				
3 am		2	3				
4 am							
5 am							
6 am	2	1				1	
7 am	1	2	2	1	2		1
8 am		3	8	3	1	2	
9 am	3	6	3	2			2
10 am		2	4	3	3	2	3
11 am		5	3	9	1	5	1
12 pm	2	1		9	2	3	2
1 pm	6	3	3	5	5	5	3
2 pm	3	2	4	5	2	3	3
3 pm		5	2	1	1	4	2
4 pm	2	2	4	1	3	2	1
5 pm	11	1		2	3	5	3
6 pm	4		4	4	1	1	3
7 pm	4			1		1	2
8 pm	5				2		1
9 pm			2			1	
10 pm			2				
11 pm							

**Daily**

Prorated Helicopter Takeoffs			1	1	1	1	1
Total Aircraft Takeoffs	43	38	47	47	27	36	28

**Weekly**

Prorated Helicopter Takeoffs	5
Fixed-wing Takeoffs	261
Total Aircraft Takeoffs	266

Source: DVRPC

## 2012/13 Aircraft Operations Counting Program

---

Weekly Activity Report  
PTW Heritage Field  
PTW Summer I 2012

For: 25 July 2012 - 31 July 2012

Day->	Wed 25-Jul	Thurs 26-Jul	Fri 27-Jul	Sat 28-Jul	Sun 29-Jul	Mon 30-Jul	Tues 31-Jul
12 am							1
1 am	2	1	1	1			1
2 am	3	3	4	2			3
3 am	1	1		1	1		1
4 am							
5 am							2
6 am			1				
7 am	2	1	1			3	
8 am	6	3	1	2	1		1
9 am	4	9	2	3	1	5	3
10 am	3	2	2	5	5	2	3
11 am	1	3	2	7	4	6	2
12 pm	3	4	1	5	3		2
1 pm	2	3	5	7	5	1	6
2 pm	1	1	3	3	4	4	1
3 pm	3	5	1	3	3	4	6
4 pm	1	1	2	4	1	2	3
5 pm	3	3	2	5	1	3	6
6 pm	1	1	10	1	3	1	1
7 pm	7		1			1	3
8 pm	5	1		1	1		5
9 pm							
10 pm	1						
11 pm							
<b>Daily</b>							
Prorated Helicopter Takeoffs	3	3	3	3	4	3	3
Total Aircraft Takeoffs	52	45	42	53	37	35	52
<b>Weekly</b>							
Prorated Helicopter Takeoffs	22						
Fixed-wing Takeoffs	294						
Total Aircraft Takeoffs	316						

Source: DVRPC

## 2012/13 Aircraft Operations Counting Program

---

Weekly Activity Report  
 PTW Heritage Field  
 PTW Summer II 2012

For: 5 September 2012 - 11 September 2012

Day->	Wed 5-Sep	Thurs 6-Sep	Fri 7-Sep	Sat 8-Sep	Sun 9-Sep	Mon 10-Sep	Tues 11-Sep
12 am							
1 am			2				1
2 am		3	4	3			2
3 am		2		2			2
4 am							
5 am							
6 am						1	
7 am	1				1	1	1
8 am	3	3	6	2	1	2	5
9 am	5	5	9	6	9	2	6
10 am	3		2	3	20	1	1
11 am	4	5	4	8	30	1	9
12 pm		1		1	8		5
1 pm	3	3	2	6	9		4
2 pm	4	1	2	3	10	1	1
3 pm	3	4		8	1	2	
4 pm	6	9	2	7	1		3
5 pm	1	3	6	1	5	1	3
6 pm	2	2	5	2	1	1	4
7 pm	2	2	5	1	3	1	2
8 pm	1	3	1	1	4	1	
9 pm	2		1				
10 pm							
11 pm							

**Daily**

Prorated Helicopter Takeoffs	3	3	3	3	3	4	3
Total Aircraft Takeoffs	43	49	54	57	106	19	52

**Weekly**

Prorated Helicopter Takeoffs	22
Fixed-wing Takeoffs	358
 Total Aircraft Takeoffs	 380

Source: DVRPC



## 2012/13 Aircraft Operations Counting Program

---

Weekly Activity Report  
 PTW Heritage Field  
 PTW Fall I 2012

For: 22 October 2012 - 28 October 2012

Day->	Mon 22-Oct	Tues 23-Oct	Wed 24-Oct	Thurs 25-Oct	Fri 26-Oct	Sat 27-Oct	Sun 28-Oct
12 am							
1 am	1		1			2	
2 am		3	3		3	3	
3 am	2	2	1		2	1	
4 am							1
5 am							
6 am			1	1	1	1	
7 am			1	3	1	4	1
8 am	2	1		4		3	3
9 am	3	2	3	2	3	4	5
10 am	2	4	3	3	3	1	2
11 am	2	2	2	2	5	8	1
12 pm	3	1	2		6	5	3
1 pm	2	3	3	1	1	5	5
2 pm	2	2		3	5	4	8
3 pm	1	1	1	1	3	2	3
4 pm	1	1	9	3	1	1	4
5 pm		2	11	1	6	3	2
6 pm	3	5	2	1	1		1
7 pm	2		3				
8 pm	1						
9 pm							
10 pm				1			
11 pm							

**Daily**

Prorated Helicopter Takeoffs	1	1	1	2	2	1	1
Fixed-wing Takeoffs	28	30	47	28	43	48	40

**Weekly**

Prorated Helicopter Takeoffs	9
Fixed Wing Takeoffs	255

Total Aircraft Takeoffs            264

Source: DVRPC

## 2012/13 Aircraft Operations Counting Program

---

Weekly Activity Report  
 PTW Heritage Field  
 PTW Fall II 2012

For: 11 December 2012 - 17 December 2012

Day->	Tues 11-Dec	Wed 12-Dec	Thurs 13-Dec	Fri 14-Dec	Sat 15-Dec	Sun 16-Dec	Mon 17-Dec
12 am							
1 am			2	2	1		
2 am		2	1	2	3		
3 am		1	1	2	1		
4 am							
5 am							
6 am							
7 am	1	2	1		1	1	1
8 am	3	7	3		7	4	2
9 am	2	1	3	6	3	8	6
10 am	3	3	2	1	6	3	4
11 am	3	3	4	3	6	5	4
12 pm	2	4	6	3	12	8	5
1 pm	6	5	2	4	10	2	3
2 pm	1	4	2	1	11	3	2
3 pm	2	3	6	4	4	7	5
4 pm	1	4	1	3	5	6	3
5 pm	3		1	6	2	3	1
6 pm		4					1
7 pm					3		
8 pm				1	2		
9 pm							
10 pm							
11 pm							

**Daily**

Prorated Helicopter Takeoffs	2	1	1	1	1	1	2
Total Aircraft Takeoffs	29	44	36	39	78	51	39

**Weekly**

Prorated Helicopter Takeoffs	9
Fixed-wing Takeoffs	307
Total Aircraft Takeoffs	316

Source: DVRPC

## 2012/13 Aircraft Operations Counting Program

---

Weekly Activity Report  
PTW Heritage Field  
PTW Winter I 2013

For: 31 January 2013 - 6 February 2013

Day->	Thurs 31-Jan	Fri 1-Feb	Sat 2-Feb	Sun 3-Feb	Mon 4-Feb	Tues 5-Feb	Wed 6-Feb
12 am							
1 am		1	1				
2 am		2	3				
3 am		2		11			
4 am							
5 am				6			
6 am	1	1		1		1	6
7 am	1		1			1	
8 am		1	1	1	5	1	
9 am	2	2	3	1	1		1
10 am	6	1	3	3	1	3	1
11 am	3	3	9	3		1	
12 pm			2	2	2	2	9
1 pm	1		3	4	4	1	8
2 pm		1	1	2	7	4	1
3 pm	2	1	2	4		7	1
4 pm	1	3		7	3		
5 pm	1	1		1	1		1
6 pm					2	1	3
7 pm		1			1		
8 pm							
9 pm							
10 pm						1	
11 pm							

**Daily**

Prorated Helicopter Takeoffs	1	1	1	1	1	1	1
Total Aircraft Takeoffs	19	21	30	47	28	24	32

**Weekly**

Prorated Helicopter Takeoffs	7
Fixed-wing Takeoffs	194
 Total Aircraft Takeoffs	 201

Source: DVRPC

## 2012/13 Aircraft Operations Counting Program

---

Weekly Activity Report  
 PTW Heritage Field  
 PTW Winter II 2013

For: 8 March 2013 - 14 March 2013

Day->	Fri 8-Mar	Sat 9-Mar	Sun 10-Mar	Mon 11-Mar	Tues 12-Mar	Wed 13-Mar	Thurs 14-Mar
12 am			1		1	1	2
1 am	3	3			1	4	2
2 am	2	3			4		2
3 am	2	1					
4 am							
5 am						2	
6 am							1
7 am	1	1	2				2
8 am		2			2	1	
9 am		2	7	1	1	1	
10 am		1	12		1	2	1
11 am		9	5			1	1
12 pm		3	18			1	1
1 pm		6	13	10	1		
2 pm	1	10	5	6	1		
3 pm		6	5	1		1	2
4 pm	1	7	3			1	1
5 pm	1	1	3	1	1	1	1
6 pm	1	1				1	
7 pm							
8 pm							
9 pm			1				
10 pm							
11 pm							

**Daily**

Prorated Helicopter Takeoffs	1	1	1	1	1	1	1
Total Aircraft Takeoffs	13	57	76	20	14	18	17

**Weekly**

Prorated Helicopter Takeoffs	7
Fixed-wing Takeoffs	208
 Total Aircraft Takeoffs	 215

Source: DVRPC

**2012/13 Aircraft Operations Counting Program**

---

Perkiomen Valley Airport (N10)

Montgomery County

Collegeville, PA 19436

Runway Orientation: 09/27

Runway Length: 2,960 ft.

**Table 10: Perkiomen Valley Airport (N10) Based Aircraft**

Based Aircraft Fleet Mix	
Single Engine	20
Multi-engine	0
Jet	0
Helicopter	0
Glider	0
Total	20

Source: Perkiomen Valley Airport

Flight operations at Perkiomen Valley Airport have declined 45 percent since the last survey three years ago. This can be partially attributed to the reduction in based aircraft, from 41 reported in the last survey to 20 for this period. In addition, the sky-diving school based at the airport has ceased operations after several years, resulting in further reduced flight operations. Flight instruction remains available, along with fuel sales and an aircraft rental. There is also hangar space available for aircraft.

**2012/13 Aircraft Operations Counting Program**

**Figure 10: Perkiomen Valley Airport (N10) Aerial Photo**



**2012/13 Aircraft Operations Counting Program**

---

**DVRPC Aircraft Counting Program**

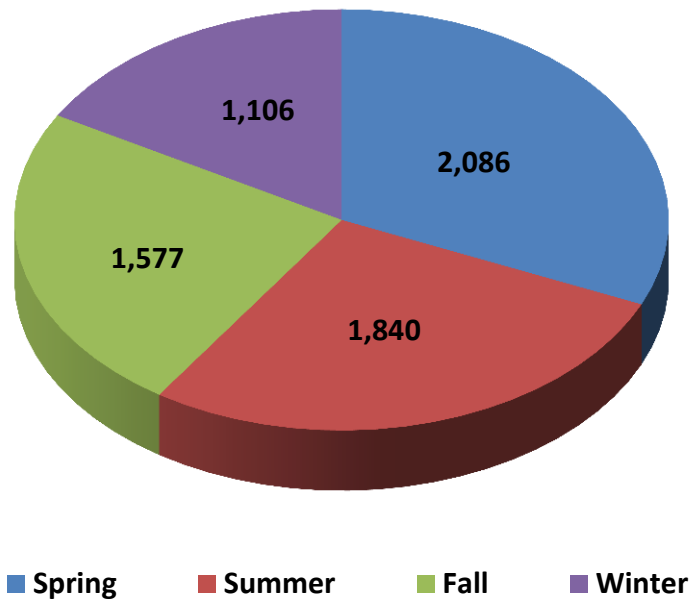
Airport: Perkiomen Valley Airport (N10)

County: Montgomery

**Table 11: Perkiomen Valley Airport (N10) Annual Summary**

Season	Year	Average Daily Operations	Total Operations	Percentage of Annual Operations
Spring	2012	22	2,086	32%
Summer	2012	20	1,840	28%
Fall	2012	18	1,577	24%
Winter	2013	12	1,106	17%
<b>Annual Operations:</b>		<b>2012/13</b>	<b>6,608</b>	
Margin of Error: 21 at 95% confidence				
Source: DVRPC				

**Figure 11: Perkiomen Valley Airport (N10) Seasonal Summary**



Source: DVRPC

## 2012/13 Aircraft Operations Counting Program

---

Weekly Activity Report  
 N10 Perkiomen Valley  
 N10 Spring I 2012

For: 25 April 2012 - 1 May 2012

Day->	Wed 25-Apr	Thurs 26-Apr	Fri 27-Apr	Sat 28-Apr	Sun 29-Apr	Mon 30-Apr	Tues 1-May
12 am							
1 am							
2 am							
3 am							
4 am							
5 am							
6 am							
7 am						1	
8 am					1	1	1
9 am			1	3	1	2	
10 am				3	1		
11 am	1		2	4	2		1
12 pm			1	1	3		1
1 pm		1		5	6		1
2 pm	1		1	4	4	1	
3 pm	1			6	1		
4 pm				5			1
5 pm		1		1	1		
6 pm						1	
7 pm					3		
8 pm					1		2
9 pm							
10 pm							
11 pm							
Daily							
Prorated Helicopter Takeoffs		1					
Total Aircraft Takeoffs	3	3	5	32	24	6	7
Weekly							
Prorated Helicopter Takeoffs	0						
Fixed-wing Takeoffs	80						
Total Aircraft Takeoffs	80						

Source: DVRPC



## 2012/13 Aircraft Operations Counting Program

---

Weekly Activity Report  
 N10 Perkiomen Valley  
 N10 Spring II 2012

For: 1 June 2012 - 7 June 2012

Day->	Fri 1-Jun	Sat 2-Jun	Sun 3-Jun	Mon 4-Jun	Tues 5-Jun	Wed 6-Jun	Thurs 7-Jun
12 am							
1 am							
2 am							
3 am							
4 am							
5 am							
6 am			1				
7 am							
8 am			1				
9 am	1	1	1		2		
10 am	4	2		1			
11 am			4	2			3
12 pm			2	2		1	
1 pm	2	2	3				
2 pm		2	1	1			1
3 pm		2	3		1		
4 pm	1	1	1		1	1	
5 pm	1	3	2	1			
6 pm		1	1		2	1	1
7 pm		2	2		2		
8 pm		1			5		
9 pm							
10 pm							
11 pm							

**Daily**

Prorated Helicopter Takeoffs						1	
Total Aircraft Takeoffs	9	17	22	7	13	4	5

**Weekly**

Prorated Helicopter Takeoffs	0
Fixed-wing Takeoffs	77
Total Aircraft Takeoffs	77

Source: DVRPC

## 2012/13 Aircraft Operations Counting Program

---

Weekly Activity Report  
 N10 Perkiomen Valley  
 N10 Summer I 2012

For: 25 July 2012 - 31 July 2012

Day->	Wed 25-Jul	Thurs 26-Jul	Fri 27-Jul	Sat 28-Jul	Sun 29-Jul	Mon 30-Jul	Tues 31-Jul
12 am							
1 am							
2 am							
3 am							
4 am							
5 am							
6 am							
7 am							
8 am							
9 am				3			
10 am				2	2	1	
11 am			1	6	3		
12 pm				3	1		
1 pm				2	2		
2 pm		1	1	2	3	1	
3 pm	1			4	2		1
4 pm		2		2	2		
5 pm	1		1	2	2	2	
6 pm	1			2	4		
7 pm		1			1		
8 pm				2			3
9 pm							
10 pm							
11 pm							

**Daily**

Prorated Helicopter Takeoffs						1	
Total Aircraft Takeoffs	3	4	3	30	22	5	4

**Weekly**

Prorated Helicopter Takeoffs	0
Fixed-wing Takeoffs	71
Total Aircraft Takeoffs	71

Source: DVRPC

## 2012/13 Aircraft Operations Counting Program

---

Weekly Activity Report  
 N10 Perkiomen Valley  
 N10 Summer II 2012

For: 5 September 2012 - 11 September 2012

Day->	Wed 5-Sep	Thurs 6-Sep	Fri 7-Sep	Sat 8-Sep	Sun 9-Sep	Mon 10-Sep	Tues 11-Sep
12 am							
1 am							
2 am							
3 am							
4 am							
5 am							
6 am							
7 am					1		
8 am							1
9 am			1				2
10 am	1	2	1	1	2	1	
11 am				3	2		
12 pm				3	3		
1 pm		1		5	3	1	
2 pm			1	3	5		
3 pm	1			1	1		1
4 pm		5		3	2		
5 pm		1	1	1	1		
6 pm					1		2
7 pm			1				
8 pm							
9 pm							
10 pm							
11 pm							

**Daily**

Prorated Helicopter Takeoffs						1	
Total Aircraft Takeoffs	2	9	5	20	21	3	6

**Weekly**

Prorated Helicopter Takeoffs	0
Fixed-wing Takeoffs	66
Total Aircraft Takeoffs	66

Source: DVRPC

## 2012/13 Aircraft Operations Counting Program

---

Weekly Activity Report  
 N10 Perkiomen Valley  
 N10 Fall I 2012

For: 22 October 2012 - 28 October 2012

Day->	Mon 22-Oct	Tues 23-Oct	Wed 24-Oct	Thurs 25-Oct	Fri 26-Oct	Sat 27-Oct	Sun 28-Oct
12 am							
1 am							
2 am							
3 am							
4 am							
5 am							
6 am							
7 am							
8 am							
9 am	1					1	3
10 am						2	2
11 am					2	3	2
12 pm				1		3	1
1 pm			1	1	1	1	3
2 pm		5	2		2	3	2
3 pm		1	1	1		1	2
4 pm					1	1	1
5 pm						1	
6 pm							1
7 pm							
8 pm							
9 pm							
10 pm							
11 pm							

**Daily**

Prorated Helicopter Takeoffs				1			
Total Aircraft Takeoffs	1	6	4	4	6	16	17

**Weekly**

Prorated Helicopter Takeoffs	0
Fixed-wing Takeoffs	54
Total Aircraft Takeoffs	54

Source: DVRPC

## 2012/13 Aircraft Operations Counting Program

---

Weekly Activity Report  
 N10 Perkiomen Valley  
 N10 Fall II 2012

For: 11 December 2012 - 17 December 2012

Day->	Tues 11-Dec	Wed 12-Dec	Thurs 13-Dec	Fri 14-Dec	Sat 15-Dec	Sun 16-Dec	Mon 17-Dec
12 am							
1 am							
2 am							
3 am							
4 am							
5 am							
6 am							
7 am							
8 am					1		
9 am	1	1		2	1		1
10 am	2	2		1		1	1
11 am	1	1	2	1	2	3	2
12 pm	1		2			1	1
1 pm	1	1		2	6	3	
2 pm	1		1	1	6	1	1
3 pm		2		1			
4 pm		1		3	4		
5 pm							
6 pm	2						
7 pm							
8 pm							
9 pm	1						
10 pm							
11 pm							

**Daily**

Prorated Helicopter Takeoffs						1	
Total Aircraft Takeoffs	10	8	5	11	20	10	6

**Weekly**

Prorated Helicopter Takeoffs	0
Fixed-wing Takeoffs	70
Total Aircraft Takeoffs	70

Source: DVRPC

## 2012/13 Aircraft Operations Counting Program

---

Weekly Activity Report  
 N10 Perkiomen Valley  
 N10 Winter I 2013

For: 31 January 2013 - 6 February 6 2013

Day->	Thurs 31-Jan	Fri 1-Feb	Sat 2-Feb	Sun 3-Feb	Mon 4-Feb	Tues 5-Feb	Wed 6-Feb
12 am							
1 am							
2 am							
3 am							
4 am							
5 am							
6 am							
7 am							
8 am							
9 am							
10 am				1			1
11 am	1	2	2				
12 pm	1		1	2		1	2
1 pm	1			1	1		2
2 pm	2	3	1	3		1	1
3 pm			3	1	3	2	
4 pm							
5 pm							
6 pm							
7 pm							
8 pm							
9 pm							
10 pm							
11 pm							

**Daily**

Prorated Helicopter Takeoffs		1					
Total Aircraft Takeoffs	5	6	7	8	4	4	6

**Weekly**

Prorated Helicopter Takeoffs	0
Fixed-wing Takeoffs	40
Total Aircraft Takeoffs	40

Source: DVRPC

## 2012/13 Aircraft Operations Counting Program

---

Weekly Activity Report  
 N10 Perkiomen Valley  
 N10 Winter II 2013

For: 9 March 2013 - 15 March 2013

Day->	Sat 9-Mar	Sun 10-Mar	Mon 11-Mar	Tues 12-Mar	Wed 13-Mar	Thurs 14-Mar	Fri 15-Mar
12 am							
1 am							
2 am							
3 am							
4 am							
5 am							
6 am							
7 am							
8 am	1	1			6		
9 am						1	
10 am						1	1
11 am	2			1		1	1
12 pm		1		1			3
1 pm	1	1	1			2	
2 pm		9					1
3 pm	1	5					
4 pm			4				
5 pm							
6 pm							
7 pm							
8 pm							
9 pm							
10 pm							
11 pm							

**Daily**

Prorated Helicopter Takeoffs						1	
Total Aircraft Takeoffs	5	17	5	2	6	6	6

**Weekly**

Prorated Helicopter Takeoffs	0
Fixed-wing Takeoffs	47
Total Aircraft Takeoffs	47

Source: DVRPC

**2012/13 Aircraft Operations Counting Program**

**Pottstown Municipal Airport (N47)**

**Montgomery County**

**Pottstown, PA 19464**

Runway Orientation: 08/26

Runway Length: 2,704 ft.

**Table 12: Pottstown Municipal Airport (N47) Based Aircraft**

Based Aircraft Fleet Mix	
Single Engine	43
Multi-engine	1
Jet	0
Helicopter	0
Glider	0
Total	44

Source: Pottstown Municipal Airport

Flight Operations have declined 11 percent in this survey period, which is in line with other airports covered during this period. Based aircraft also declined from 56 in the last survey to 44 reported on the latest FAA 5010 report. This 12 percent decline in based aircraft closely matches the overall flight operations decline of 11 percent.

Pottstown Municipal Airport continues to maintain an active flight school, which includes a full-motion flight simulator. The simulator is available for both student pilots in training and for active pilots to maintain instrument rating currency.



**2012/13 Aircraft Operations Counting Program**

**Figure 12: Pottstown Municipal Airport (N47) Aerial Photo**



Aerial Imagery: DVRPC, 2010

**2012/13 Aircraft Operations Counting Program**

---

**DVRPC Aircraft Counting Program**

Airport: Pottstown Municipal Airport

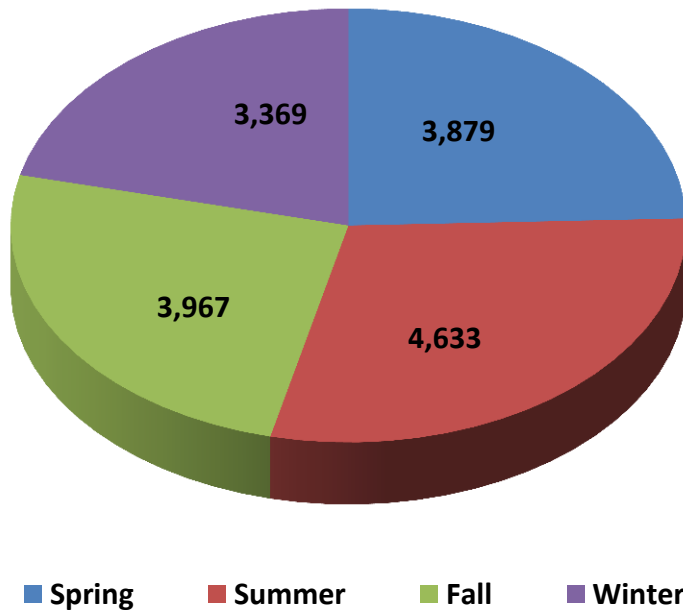
County: Montgomery

**Table 13: Pottstown Municipal Airport (N47) Annual Summary**

Season	Year	Average Daily Operations	Total Operations	Percentage of Annual Operations
Spring	2012	42	3,879	24%
Summer	2012	49	4,633	29%
Fall	2012	45	3,967	25%
Winter	2013	38	3,369	21%
<b>Annual Operations:</b>		<b>2012/13</b>	<b>15,848</b>	

Margin of Error: 12 at 95% confidence  
Source: DVRPC

**Figure 13: Pottstown Municipal Airport (N47) Seasonal Summary**



Source: DVRPC

## 2012/13 Aircraft Operations Counting Program

---

Weekly Activity Report      For: 26 April 2012 - 2 May 2012  
 N47 Pottstown Municipal Airport  
 N47 Spring I 2012

Day->	Thurs 26-Apr	Fri 27-Apr	Sat 28-Apr	Sun 29-Apr	Mon 30-Apr	Tues 1-May	Wed 2-May
12 am							
1 am							
2 am							
3 am							
4 am							
5 am							
6 am							
7 am							
8 am	1	1	1	2		1	1
9 am	2	1		4	3	1	2
10 am	3	1	7	5	3	5	2
11 am			8	1	3	1	3
12 pm	1	1	2	1	3	3	1
1 pm		3	3	3	1		3
2 pm	3	3	2	2	2	3	2
3 pm	1	2	2	3	3		1
4 pm	1	1	4	3	9	1	
5 pm				1			1
6 pm		1			1		
7 pm				2		1	
8 pm			3			1	
9 pm							
10 pm							
11 pm							

### Daily

Prorated Helicopter Takeoffs				<i>Not Available</i>			
Total Aircraft Takeoffs	12	14	32	27	28	17	16

### Weekly

Prorated Helicopter Takeoffs	n/a
Fixed-wing Takeoffs	146
Total Aircraft Takeoffs	146

Source: DVRPC

## 2012/13 Aircraft Operations Counting Program

---

Weekly Activity Report      For: 18 June 2012 - 24 June 2012  
 N47 Pottstown Municipal Airport  
 N47 Spring II 2012

Day->	Mon 18-Jun	Tues 19-Jun	Wed 20-Jun	Thurs 21-Jun	Fri 22-Jun	Sat 23-Jun	Sun 24-Jun
12 am							
1 am							
2 am							
3 am							
4 am							
5 am							
6 am							
7 am				1		1	
8 am						1	2
9 am	1		2	6	1	4	3
10 am	3	1	1	6	2	5	4
11 am	1	1	3	2	1	2	7
12 pm	1	3	2		1	3	1
1 pm	1	2	7	2	3	6	3
2 pm			1		1	3	4
3 pm	2	2	1	1	4	2	3
4 pm	1	1	1	2	3	3	1
5 pm		2			2	1	
6 pm	4			1	1	1	
7 pm							1
8 pm			1				
9 pm							
10 pm							
11 pm							

**Daily**

Prorated Helicopter Takeoffs				<i>Not Available</i>			
Total Aircraft Takeoffs	14	12	19	21	19	32	29

**Weekly**

Prorated Helicopter Takeoffs	n/a
Fixed-wing Takeoffs	146
Total Aircraft Takeoffs	146

Source: DVRPC

## 2012/13 Aircraft Operations Counting Program

---

Weekly Activity Report            For: 24 July 2012 - 30 July 2012  
 N47 Pottstown Municipal Airport  
 N47 Summer I 2012

Day->	Tues 24-Jul	Wed 25-Jul	Thurs 26-Jul	Fri 27-Jul	Sat 28-Jul	Sun 29-Jul	Mon 30-Jul
12 am							
1 am							
2 am							
3 am							
4 am							
5 am							
6 am							
7 am							
8 am		1		2	1	2	
9 am		1		3	5	10	
10 am		1	2	2	3	3	
11 am	3	2	1	1	5	8	3
12 pm	2	1	2	2	3	4	2
1 pm	4	3		1	5	3	1
2 pm	4	3	2	3	6	1	2
3 pm	3	2		1	4	5	3
4 pm	1	1	2	1	3	3	2
5 pm		1	2	4	1		1
6 pm			1		1	1	2
7 pm		3	3		2		
8 pm	1	1					
9 pm							
10 pm							1
11 pm							

### Daily

Prorated Helicopter Takeoffs				<i>Not Available</i>			
Total Aircraft Takeoffs	18	20	15	20	39	40	17

### Weekly

Prorated Helicopter Takeoffs	n/a
Fixed-wing Takeoffs	169
 Total Aircraft Takeoffs	 169

Source: DVRPC

## 2012/13 Aircraft Operations Counting Program

---

Weekly Activity Report      For: 5 September 2012 - 11 September 2012  
 N47 Pottstown Municipal Airport  
 N47 Summer II 2012

Day->	Wed 5-Sep	Thurs 6-Sep	Fri 7-Sep	Sat 8-Sep	Sun 9-Sep	Mon 10-Sep	Tues 11-Sep
12 am							
1 am							
2 am							
3 am							
4 am							
5 am							
6 am						1	
7 am				2			
8 am		3		3	1	1	5
9 am	2		1	2	4		7
10 am	1		3	1	4	1	6
11 am	3	1	1	5	3	3	5
12 pm	1	3	1	2	5	2	1
1 pm	1	1	1	3	2	3	1
2 pm	2	3	3	1	4	3	9
3 pm	1		2	2	1	2	1
4 pm	2		3	3	4	3	1
5 pm			12	3	2	1	6
6 pm			1	1			1
7 pm	1		1				1
8 pm							
9 pm							
10 pm							
11 pm							

**Daily**

Prorated Helicopter Takeoffs				<i>Not Available</i>			
Total Aircraft Takeoffs	14	11	29	28	30	20	44

**Weekly**

Prorated Helicopter Takeoffs	n/a
Fixed-wing Takeoffs	176
 Total Aircraft Takeoffs	 176

Source: DVRPC

## 2012/13 Aircraft Operations Counting Program

---

Weekly Activity Report      For: 22 October 2012 - 28 October 2012  
 N47 Pottstown Municipal Airport  
 N47 Fall I 2012

Day->	Mon 22-Oct	Tues 23-Oct	Wed 24-Oct	Thurs 25-Oct	Fri 26-Oct	Sat 27-Oct	Sun 28-Oct
12 am							
1 am							
2 am							
3 am							
4 am							
5 am							
6 am							
7 am							
8 am	1			1			1
9 am			1	2	1	4	2
10 am	2	1	3	2	3		4
11 am	3	2	2	1	1	13	5
12 pm	1	4		3		12	7
1 pm	1	3		1	1		9
2 pm	1	1			3	1	3
3 pm	1		6	3	2	11	1
4 pm		1	5	1	3		3
5 pm		3	5	1	1		1
6 pm	2	1	2	2	3		
7 pm	1		1	3			
8 pm							
9 pm							
10 pm							
11 pm							

### Daily

Prorated Helicopter Takeoffs				<i>Not Available</i>			
Total Aircraft Takeoffs	13	16	25	20	18	41	36

### Weekly

Prorated Helicopter Takeoffs	n/a
Fixed-wing Takeoffs	169
 Total Aircraft Takeoffs	 169

Source: DVRPC

## 2012/13 Aircraft Operations Counting Program

---

Weekly Activity Report      For: 11 December 2012 - 17 December 2012  
 N47 Pottstown Municipal Airport  
 N47 Fall II 2012

Day->	Tues 11-Dec	Wed 12-Dec	Thurs 13-Dec	Fri 14-Dec	Sat 15-Dec	Sun 16-Dec	Mon 17-Dec
12 am							
1 am							
2 am							
3 am							
4 am							
5 am							
6 am							
7 am					1		
8 am	2	1		2	5	3	1
9 am	3	1	2	2	2	4	2
10 am	1	3	3	3	10	2	1
11 am	2	1	1	1	4	3	1
12 pm	1	2	2	3	2	3	2
1 pm	3	1	1	2	2	5	
2 pm	5		3	3	9	6	
3 pm		3	1	1	6	2	
4 pm	1		1	1	2		
5 pm							
6 pm					1		
7 pm					2		
8 pm							
9 pm							
10 pm							
11 pm							

### Daily

Prorated Helicopter Takeoffs				<i>Not Available</i>			
Total Aircraft Takeoffs	18	12	14	18	46	28	7

### Weekly

Prorated Helicopter Takeoffs	n/a
Fixed-wing Takeoffs	143
Total Aircraft Takeoffs	143

Source: DVRPC



## 2012/13 Aircraft Operations Counting Program

---

Weekly Activity Report      For: 1 February 2013 - 7 February 2013  
 N47 Pottstown Municipal Airport  
 N47 Winter I 2013

Day->	Fri 1-Feb	Sat 2-Feb	Sun 3-Feb	Mon 4-Feb	Tues 5-Feb	Wed 6-Feb	Thurs 7-Feb
12 am							
1 am							
2 am							
3 am							
4 am							
5 am							
6 am							
7 am		1					
8 am		2	1	1	17		
9 am	1	1	2	1	4	2	1
10 am		3	3		3	2	1
11 am	2	3	5	1			2
12 pm	1	3	3	3	1	3	3
1 pm	3	3	5	1		1	1
2 pm		3	4	5	1	1	3
3 pm	1	9	2				1
4 pm		3	2				1
5 pm	1	1		1			
6 pm							
7 pm							
8 pm							
9 pm							
10 pm							
11 pm							

### Daily

Prorated Helicopter Takeoffs				<i>Not Available</i>			
Total Aircraft Takeoffs	9	32	27	13	26	9	13

### Weekly

Prorated Helicopter Takeoffs	n/a/
Fixed-wing Takeoffs	129
 Total Aircraft Takeoffs	 129

Source: DVRPC

## 2012/13 Aircraft Operations Counting Program

---

Weekly Activity Report      For: 9 March 2013 - 15 March 2013  
 N47 Pottstown Municipal Airport  
 N47 Winter II 2013

Day->	Sat 9-Mar	Sun 10-Mar	Mon 11-Mar	Tues 12-Mar	Wed 13-Mar	Thurs 14-Mar	Fri 15-Mar
12 am							
1 am							
2 am							
3 am							
4 am							
5 am							
6 am					1		
7 am	3			1	2	3	2
8 am	2	2		2	8	1	1
9 am	1	8	3	1	1	3	3
10 am	3	3	1	2	8	1	5
11 am	3	2	1			1	3
12 pm	2			1	3		3
1 pm	7	6	1	2			1
2 pm	4	4	3		1		1
3 pm	3	4	1				
4 pm	1	4					2
5 pm	1						
6 pm							
7 pm							
8 pm							
9 pm							
10 pm							
11 pm							

**Daily**

Prorated Helicopter Takeoffs				<i>Not Available</i>			
Total Aircraft Takeoffs	30	33	10	9	24	9	21

**Weekly**

Prorated Helicopter Takeoffs	n/a
Fixed-wing Takeoffs	136
Total Aircraft Takeoffs	136

Source: DVRPC

## South Jersey Regional Airport (VAY)

**Burlington County**

**Medford, NJ 08055**

Runway Orientation: 08/26

Runway Length: 3,911 ft.

**Table 14: South Jersey Regional Airport (VAY) Based Aircraft**

Based Aircraft Fleet Mix	
Single Engine	84
Multi-engine	7
Jet	0
Helicopter	5
Glider	0
Total	96

Source: South Jersey Regional Airport

Flight Operations at South Jersey Regional Airport have declined nine percent since the last survey three years ago. This decline is well within the norm for airports counted in this period. Based aircraft have also declined by seven percent from 103 reported three years ago to 96 currently, which would account for the flight operations decline.

Several aircraft maintenance operations are based at South Jersey Regional Airport, and one of them, BP Air, has the maintenance contract for all regional Civil Air Patrol (CAP) aircraft. The airport remains a busy reliever airport with multiple successful businesses on-site.

**2012/13 Aircraft Operations Counting Program**

**Figure 14: South Jersey Regional Airport (VAY) Aerial Photo**



**2012/13 Aircraft Operations Counting Program**

---

**DVRPC Aircraft Counting Program**

Airport: South Jersey Regional Airport (VAY)

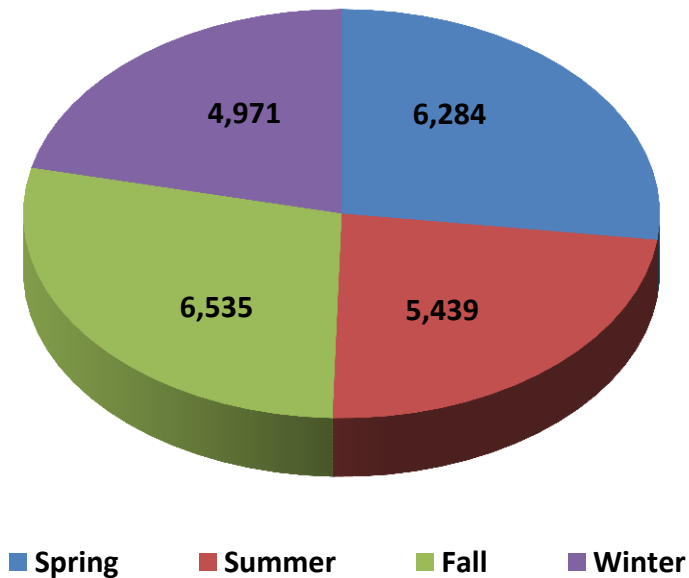
County: Burlington

**Table 15: South Jersey Regional Airport (VAY) Annual Summary**

Season	Year	Average Daily Operations	Total Operations	Percentage of Annual Operations
Spring	2012	68	6,284	27%
Summer	2012	58	5,439	23%
Fall	2012	73	6,535	28%
Winter	2013	56	4,971	21%
<b>Annual Operations:</b>		<b>2012/13</b>	<b>23,229</b>	

Margin of Error: 11 at 95% confidence  
Source: DVRPC

**Figure 15: South Jersey Regional Airport (VAY) Seasonal Summary**



Source: DVRPC

## 2012/13 Aircraft Operations Counting Program

---

Weekly Activity Report      For: 12 April 2012 - 18 April 2012  
 VAY South Jersey Regional Airport  
 VAY Spring I 2012

Day->	Thurs 12-Apr	Fri 13-Apr	Sat 14-Apr	Sun 15-Apr	Mon 16-Apr	Tues 17-Apr	Wed 18-Apr
12 am							
1 am							
2 am							
3 am							
4 am							
5 am							
6 am	1						
7 am		4					
8 am	1		5				
9 am		2	8	2	1		1
10 am	2	4	9	2		1	1
11 am	2	13	5	1	1		4
12 pm	1	4	2	2	2		4
1 pm	3	3	5	3			1
2 pm		3	7	1	1		1
3 pm	1	4	3	1	2		2
4 pm		8	3	11			
5 pm		6	13		1		4
6 pm		1	2	10		2	2
7 pm	1	1		1		1	3
8 pm				1	2		
9 pm							
10 pm							
11 pm							

**Daily**

Prorated Helicopter Takeoffs	3	3	3	3	4	4	3
Total Aircraft Takeoffs	15	56	65	38	14	8	26

**Weekly**

Prorated Helicopter Takeoffs	23
Fixed-wing Takeoffs	199
 Total Aircraft Takeoffs	 222

Source: DVRPC

## 2012/13 Aircraft Operations Counting Program

---

Weekly Activity Report      For: 18 May 2012 - 24 May 2012  
 VAY South Jersey Regional Airport  
 VAY Spring II 2012

Day->	Fri 18-May	Sat 19-May	Sun 20-May	Mon 21-May	Tues 22-May	Wed 23-May	Thurs 24-May
12 am							
1 am							
2 am							
3 am							
4 am							
5 am							
6 am	1						1
7 am	3	1	2	1	1	1	
8 am	2	2	2	2		2	
9 am	3	9	4	1	2	2	
10 am	1	7	7			3	
11 am	10	8	2	2	1	1	2
12 pm	3	5	3	1	3	2	5
1 pm	4	6	5	2	2	4	1
2 pm	2	4	4	1	1	1	2
3 pm	5	4	5	3		3	1
4 pm	5	6	3	4	7		2
5 pm	2	1	1	2		2	3
6 pm		1	3	1	1	1	
7 pm	1			2			2
8 pm	4		1			1	1
9 pm	1						2
10 pm							
11 pm							
<b>Daily</b>							
Prorated Helicopter Takeoffs	3	3	3	4	4	3	3
Total Aircraft Takeoffs	50	57	45	26	22	26	25
<b>Weekly</b>							
Prorated Helicopter Takeoffs	23						
Fixed-wing Takeoffs	228						
Total Aircraft Takeoffs	251						

Source: DVRPC

## 2012/13 Aircraft Operations Counting Program

---

Weekly Activity Report      For: 12 July 2012 - 18 July 2012  
 VAY South Jersey Regional Airport  
 VAY Summer I 2012

Day->	Thurs 12-Jul	Fri 13-Jul	Sat 14-Jul	Sun 15-Jul	Mon 16-Jul	Tues 17-Jul	Wed 18-Jul
12 am							
1 am							
2 am							
3 am							
4 am							
5 am							
6 am							
7 am		1				1	
8 am	2			1		1	1
9 am	1	6	4	3			2
10 am	1		3	7	1	3	
11 am	3	2	2		2	2	1
12 pm	1			1	1	3	1
1 pm	2	1		2	1	4	3
2 pm	2			4	2	1	3
3 pm	2		2	6	3	1	1
4 pm	1	1	2		1	1	1
5 pm	3	8	3	1	2	1	2
6 pm	1	3	3		1	1	3
7 pm	2	1		1			1
8 pm							
9 pm							
10 pm	2			1			
11 pm							

**Daily**

Prorated Helicopter Takeoffs	3	3	3	3	4	4	3
Total Aircraft Takeoffs	26	26	22	30	18	23	22

**Weekly**

Prorated Helicopter Takeoffs	23
Fixed-wing Takeoffs	144
 Total Aircraft Takeoffs	 167

Source: DVRPC



## 2012/13 Aircraft Operations Counting Program

---

Weekly Activity Report      For: 23 August 2012 - 29 August 2012  
 VAY South Jersey Regional Airport  
 VAY Summer II 2012

Day->	Thurs 23-Aug	Fri 24-Aug	Sat 25-Aug	Sun 26-Aug	Mon 27-Aug	Tues 28-Aug	Wed 29-Aug
12 am			1				
1 am							
2 am							
3 am							
4 am							
5 am							
6 am	1	1					
7 am	1	1		1		1	1
8 am	1	2	1			1	2
9 am	3	3	3	3	2	3	2
10 am	3	2	4	5	3	3	3
11 am	3	1	2	2	3	2	5
12 pm	2	3	3	1	4	2	3
1 pm	2	1	5	2	2	1	4
2 pm	7	5	2	5	5	2	3
3 pm	1	7	3	7	1	2	4
4 pm	1	7	5	3	1	1	2
5 pm	1	1	3	3		3	1
6 pm	4	1	1	2		2	3
7 pm	1		1	1			1
8 pm							
9 pm		2					
10 pm							
11 pm							

**Daily**

Prorated Helicopter Takeoffs	3	3	3	4	3	4	3
Total Aircraft Takeoffs	34	40	37	39	24	27	37

**Weekly**

Prorated Helicopter Takeoffs	23
Fixed-wing Takeoffs	215
<b>Total Aircraft Takeoffs</b>	<b>238</b>

Source: DVRPC

## 2012/13 Aircraft Operations Counting Program

---

Weekly Activity Report      For: 11 October 2012 - 17 October 2012  
 VAY South Jersey Regional Airport  
 VAY Fall I 2012

Day->	Thurs 11-Oct	Fri 12-Oct	Sat 13-Oct	Sun 14-Oct	Mon 15-Oct	Tues 16-Oct	Wed 17-Oct
12 am							
1 am							
2 am							
3 am							
4 am							
5 am							
6 am						1	
7 am	1	1	1	1		1	
8 am	2	3	1	3		3	2
9 am	1	1	6	4	2	3	2
10 am		1	6	5	2	1	2
11 am	2	3	4	1	2	5	4
12 pm	6	1	3	2		3	7
1 pm	5	2	4	5	2	1	
2 pm	9	3	2	4	1	1	3
3 pm	5	5	1		5	3	8
4 pm	8	1	5	1	3	1	8
5 pm	3	1	2	6	3		
6 pm		1	1		2	1	1
7 pm						2	
8 pm						2	
9 pm							
10 pm							
11 pm							

**Daily**

Prorated Helicopter Takeoffs	3	4	3	3	4	3	3
Total Aircraft Takeoffs	45	27	39	35	26	31	40

**Weekly**

Prorated Helicopter Takeoffs	23
Fixed-wing Takeoffs	220
 Total Aircraft Takeoffs	 243

Source: DVRPC

## 2012/13 Aircraft Operations Counting Program

---

Weekly Activity Report      For: 9 November 2012 - 15 November 2012  
 VAY South Jersey Regional Airport  
 VAY Fall II 2012

Day->	Fri 9-Nov	Sat 10-Nov	Sun 11-Nov	Mon 12-Nov	Tues 13-Nov	Wed 14-Nov	Thurs 15-Nov
12 am							
1 am			3				
2 am							
3 am							
4 am							
5 am							
6 am	6						
7 am	7	1			1	1	
8 am	1	2		1	1	3	2
9 am	2	4	4	1	3	1	2
10 am	6	8	8	1	3	2	1
11 am	1	3	7	1	4	1	2
12 pm	2	8	13	3	1	1	3
1 pm	3	2	5	1	2	3	1
2 pm	3	6	4		2	1	3
3 pm	5	15	5	3		1	2
4 pm	8	17	9			2	3
5 pm	1	2	1	1		1	1
6 pm	3	2				1	
7 pm		2	1	1			
8 pm							
9 pm							
10 pm							
11 pm							

**Daily**

Prorated Helicopter Takeoffs	3	3	3	4	3	4	3
Total Aircraft Takeoffs	51	75	63	17	20	22	23

**Weekly**

Prorated Helicopter Takeoffs	23
Fixed-wing Takeoffs	248
 Total Aircraft Takeoffs	 271

Source: DVRPC

## 2012/13 Aircraft Operations Counting Program

---

Weekly Activity Report      For: 17 January - 23 January  
 VAY South Jersey Regional Airport  
 VAY Winter I 2013

Day->	Thurs 17-Jan	Fri 18-Jan	Sat 19-Jan	Sun 20-Jan	Mon 21-Jan	Tues 22-Jan	Wed 23-Jan
12 am							
1 am							
2 am							
3 am							
4 am							
5 am							
6 am							
7 am	1						
8 am		2		1	1	1	
9 am	3	1	2	3			1
10 am	1	4	3	4		1	
11 am	5	1	6	3	1	1	1
12 pm	4	3	5	3			4
1 pm	1	3	4	3		3	11
2 pm	2	1	6	4	3	1	2
3 pm	4	3	2	3	1	1	
4 pm	2	2	2	3	1	2	3
5 pm		2	1	2	1	1	
6 pm							1
7 pm			1				
8 pm							
9 pm							
10 pm							
11 pm							

**Daily**

Prorated Helicopter Takeoffs	3	3	3	3	4	4	3
Total Aircraft Takeoffs	26	25	35	32	12	15	26

**Weekly**

Prorated Helicopter Takeoffs	23
Fixed-wing Takeoffs	148
 Total Aircraft Takeoffs	 171

Source: DVRPC

## 2012/13 Aircraft Operations Counting Program

---

Weekly Activity Report      13 February 2013 - 19 February 2013  
 VAY South Jersey Regional Airport  
 VAY Winter II 2013

Day->	Wed 13-Feb	Thurs 14-Feb	Fri 15-Feb	Sat 16-Feb	Sun 17-Feb	Mon 18-Feb	Tues 19-Feb
12 am							
1 am							
2 am							
3 am							
4 am							
5 am							
6 am							
7 am							
8 am							1
9 am	5			2	1		
10 am	11	8	2	1	3	1	2
11 am	3	2	9	3	3	5	3
12 pm	2	2	2	4	5	3	3
1 pm	8	4	6	3	2		5
2 pm	10	1	8	5	7	5	8
3 pm		1	5	3	3	1	5
4 pm		1	5	2	1		2
5 pm		3	1		1		1
6 pm		1				1	
7 pm		1			1		
8 pm							
9 pm							
10 pm							
11 pm							

**Daily**

Prorated Helicopter Takeoffs	3	3	3	4	4	3	3
Total Aircraft Takeoffs	42	27	41	27	31	19	33

**Weekly**

Prorated Helicopter Takeoffs	23
Fixed-wing Takeoffs	197
 Total Aircraft Takeoffs	 220

Source: DVRPC

## Summit Airport (EVY)

New Castle County

Middletown, DE 19709

Runway Orientation: 17/36

Runway Length: 4,500 ft.

**Table 16: Summit Airport (EVY) Based Aircraft**

Based Aircraft Fleet Mix	
Single Engine	39
Multi-engine	2
Jet	0
Helicopter	0
Glider	0
Total	41

Source: Summit Airport

Summit Airport is owned and operated by Summit Aviation, which is a division of Greenwich Aero Group. The airport is located in Middletown, Delaware, just below the Chesapeake and Delaware canal. The airport serves government agencies, law enforcement, and general aviation customers. Heavy maintenance of both airframe and power plants, along with avionics sales and services, is available.

During the current counting cycle, Summit Airport is shown to be down 30 percent in overall flight operations. However, airport management did not provide helicopter flight operations data to DVRPC despite several requests. Helicopter flight data is not counted by DVRPC's data collection equipment and must be estimated by the airport operator. Therefore, the reported total Annual Aircraft Operations at Summit do not include any helicopter operations—in the previous reports, helicopter operations have been about 20 percent of overall operations.

Although Summit is a National Plan of Integrated Airport Systems (NPIAS) airport, it has not received any grants from FAA for more than 20 years.

Figure 16: Summit Airport (EVY) Aerial Photo



**2012/13 Aircraft Operations Counting Program**

---

**DVRPC Aircraft Counting Program**

Airport: Summit Airport (EVY)

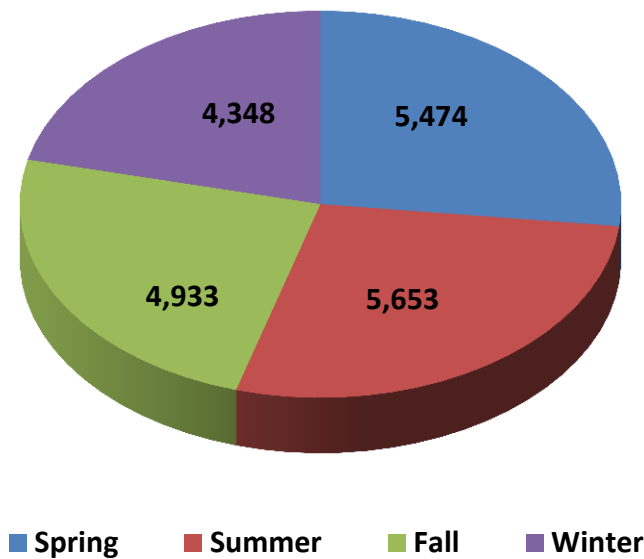
County: New Castle

**Table 17: Summit Airport (EVY) Annual Summary**

Season	Year	Average Daily Operations	Total Operations	Percentage of Annual Operations
Spring	2012	59	5,474	27%
Summer	2012	60	5,653	28%
Fall	2012	55	4,933	24%
Winter	2013	49	4,348	21%
<b>Annual Operations:</b>		<b>2012/13</b>	<b>20,409</b>	

Margin of Error: 13 at 95% confidence  
Source: DVRPC

**Figure 17: Summit Airport (EVY) Seasonal Summary**



Source: DVRPC



## 2012/13 Aircraft Operations Counting Program

---

Weekly Activity Report  
 EVY Summit Airport  
 EVY Spring I 2012

For: 26 April 2012 - 2 May 2012

Day->	Thurs 26-Apr	Fri 27-Apr	Sat 28-Apr	Sun 29-Apr	Mon 30-Apr	Tues 1-May	Wed 2-May
12 am							
1 am							
2 am							
3 am							
4 am							
5 am							
6 am							
7 am					4		1
8 am			1	5	6		4
9 am	2		7	7	6	1	3
10 am	2		10	2	4		5
11 am	2		7	4	6	3	2
12 pm	3	3	4	3	2		
1 pm	2	2	2	5	3	1	3
2 pm	4	1	3	2	3	3	
3 pm	7		5	3			1
4 pm	1	1	1	6	1	4	3
5 pm		1	2		2	1	
6 pm					4	11	2
7 pm						4	
8 pm					4		
9 pm					2		
10 pm							
11 pm							

### Daily

Prorated Helicopter Takeoffs				<i>Not Available</i>			
Total Aircraft Takeoffs	23	8	42	37	47	28	24

### Weekly

Prorated Helicopter Takeoffs	n/a
Fixed-wing Takeoffs	209
Total Aircraft Takeoffs	209

Source: DVRPC

## 2012/13 Aircraft Operations Counting Program

---

Weekly Activity Report  
 EVY Summit Airport  
 EVY Spring II 2012

For: 1 June 2012 - 7 June 2012

Day->	Fri 1-Jun	Sat 2-Jun	Sun 3-Jun	Mon 4-Jun	Tues 5-Jun	Wed 6-Jun	Thurs 7-Jun
12 am							
1 am							
2 am							
3 am							
4 am							
5 am							
6 am					1	1	
7 am				1			4
8 am	2	3	1		1		3
9 am	5	6	4	2		4	1
10 am	3	6	3	1	3		2
11 am	5		10	4	1		1
12 pm	3	2	2	4	3	1	7
1 pm	2	2	1	2	3	2	4
2 pm	4	5	1	3	3	3	
3 pm	1	1	2	3	2	2	2
4 pm	3	2	3	1	8	1	2
5 pm	1	2	3	1	2		
6 pm	1	1	2	1	7	3	
7 pm		1			2	2	
8 pm		5					
9 pm		1					
10 pm							
11 pm							

**Daily**

Prorated Helicopter Takeoffs				<i>Not Available</i>			
Total Aircraft Takeoffs	30	37	32	23	36	19	26

**Weekly**

Prorated Helicopter Takeoffs	n/a
Fixed-wing Takeoffs	203
Total Aircraft Takeoffs	203

Source: DVRPC

## 2012/13 Aircraft Operations Counting Program

---

Weekly Activity Report  
 EVY Summit Airport  
 EVY Summer I 2012

For: 25 July 2012 - 31 July 2012

Day->	Wed 25-Jul	Thurs 26-Jul	Fri 27-Jul	Sat 28-Jul	Sun 29-Jul	Mon 30-Jul	Tues 31-Jul
12 am							
1 am							
2 am							
3 am							
4 am							
5 am							
6 am	1	1	2	1		2	1
7 am			1				1
8 am	2		3	4	2	1	
9 am	1	2	3	2	3	1	1
10 am	1	2	3	5	3	9	2
11 am	3	7	2	2	2	2	1
12 pm	7	5	5	2	1	1	
1 pm	6	3	3	1	2	2	
2 pm	3	1	1	3	2	2	
3 pm	2	1	2	2	3		1
4 pm	2	2	2	4	4	1	
5 pm		1	2	2	3	1	
6 pm	5	1		3	2	1	2
7 pm	7	2			1		6
8 pm	1			1		1	
9 pm	2						
10 pm							
11 pm							

### Daily

Prorated Helicopter Takeoffs				<i>Not Available</i>			
Total Aircraft Takeoffs	43	28	29	32	28	24	15

### Weekly

Prorated Helicopter Takeoffs	n/a
Fixed-wing Takeoffs	199
 Total Aircraft Takeoffs	 199

Source: DVRPC

## 2012/13 Aircraft Operations Counting Program

---

Weekly Activity Report  
 EVY Summit Airport  
 EVY Summer II 2012

For: 6 September 2012 - 12 September 2012

Day->	Thurs 6-Sep	Fri 7-Sep	Sat 8-Sep	Sun 9-Sep	Mon 10-Sep	Tues 11-Sep	Wed 12-Sep
12 am							
1 am							
2 am							
3 am							
4 am							
5 am							
6 am							
7 am						1	2
8 am		1	1	2	1		1
9 am	4	4	3	3		2	2
10 am	2			4	3	5	3
11 am		2	7	1	3	3	3
12 pm		4		2	3	8	2
1 pm		1	3	7	3	5	1
2 pm		5	3	3		4	3
3 pm	5		4	2	2	5	2
4 pm	9	9	2	5	2	2	1
5 pm			2	6		1	1
6 pm		2	1	13	1	5	1
7 pm	1	1		6		8	
8 pm		1					
9 pm						2	
10 pm							
11 pm							

**Daily**

Prorated Helicopter Takeoffs				<i>Not Available</i>			
Total Aircraft Takeoffs	21	30	26	54	18	51	22

**Weekly**

Prorated Helicopter Takeoffs	n/a
Fixed-wing Takeoffs	222
Total Aircraft Takeoffs	222

Source: DVRPC

## 2012/13 Aircraft Operations Counting Program

---

Weekly Activity Report  
 EVY Summit Airport  
 EVY Fall I 2012

For: 22 October 2012 - 28 October 2012

Day->	Mon 22-Oct	Tues 23-Oct	Wed 24-Oct	Thurs 25-Oct	Fri 26-Oct	Sat 27-Oct	Sun 28-Oct
12 am							
1 am							
2 am							
3 am							
4 am				1			
5 am							
6 am							
7 am							
8 am	1	1					2
9 am				1	3	5	3
10 am	5	5		1	3	8	1
11 am	4	3	2	5	5	3	1
12 pm	2	3	1	1	2	9	3
1 pm	1	2	3	2	1	3	1
2 pm	1		3		2	1	2
3 pm	2		2	5	2	4	4
4 pm	2	3	3			1	5
5 pm	4	2	6	1	2		2
6 pm	9	3	2	2	4		3
7 pm		1		1			2
8 pm	4	4					1
9 pm							
10 pm							
11 pm							

**Daily**

Prorated Helicopter Takeoffs				<i>Not Available</i>			
Total Aircraft Takeoffs	35	27	22	20	24	34	30

**Weekly**

Prorated Helicopter Takeoffs	n/a
Fixed-wing Takeoffs	192
 Total Aircraft Takeoffs	 192

Source: DVRPC

## 2012/13 Aircraft Operations Counting Program

---

Weekly Activity Report  
 EVY Summit Airport  
 EVY Fall II 2012

For: 11 December 2012 - 17 December 2012

Day->	Tues 11-Dec	Wed 12-Dec	Thurs 13-Dec	Fri 14-Dec	Sat 15-Dec	Sun 16-Dec	Mon 17-Dec
12 am							
1 am							
2 am							
3 am							
4 am							
5 am							
6 am	1	1					
7 am		2			1	2	
8 am	2		1		1	1	
9 am	1	2	2	2	2	3	2
10 am	1	1	1	1	6	5	3
11 am	1		3	2	8	7	2
12 pm	3	4	5	5	2	4	5
1 pm	1	10	2	3	8	5	3
2 pm	3	7		1	6	2	2
3 pm	2	2	1	5	2	1	2
4 pm	4	6		5	1	3	1
5 pm	1				2	1	1
6 pm					2		
7 pm				4			
8 pm				2			
9 pm							
10 pm							
11 pm							

**Daily**

Prorated Helicopter Takeoffs				<i>Not Available</i>			
Total Aircraft Takeoffs	20	35	15	30	41	34	21

**Weekly**

Prorated Helicopter Takeoffs	n/a
Fixed-wing Takeoffs	196
Total Aircraft Takeoffs	196

Source: DVRPC

## 2012/13 Aircraft Operations Counting Program

---

Weekly Activity Report  
 EVY Summit Airport  
 EVY Winter I 2013

For: 31 January 2013 - 6 February 2013

Day->	Thurs 31-Jan	Fri 1-Feb	Sat 2-Feb	Sun 3-Feb	Mon 4-Feb	Tues 5-Feb	Wed 6-Feb
12 am							
1 am							
2 am							
3 am							
4 am							
5 am							
6 am							
7 am			1	2			
8 am	1	2	4	5	1	1	
9 am	3	2	5	3	2	1	1
10 am	2	2	3	1	1	1	4
11 am	4	3	4	12	1	1	3
12 pm	3	5	7	1	2	3	
1 pm	3	5	6	3	3	2	2
2 pm	3	6	5	3		3	
3 pm	3	3	4	5			4
4 pm	2		1	1		4	
5 pm							4
6 pm	1						2
7 pm							
8 pm							
9 pm							
10 pm							
11 pm							

**Daily**

Prorated Helicopter Takeoffs			<i>Not Available</i>				
Total Aircraft Takeoffs	25	28	40	36	10	16	20

**Weekly**

Prorated Helicopter Takeoffs	n/a
Fixed-wing Takeoffs	175
 Total Aircraft Takeoffs	 175

Source: DVRPC

## 2012/13 Aircraft Operations Counting Program

---

Weekly Activity Report  
 EVY Summit Airport  
 EVY Winter II 2013

For: 7 March 2013 - 13 March 2013

Day->	Thurs 7-Mar	Fri 8-Mar	Sat 9-Mar	Sun 10-Mar	Mon 11-Mar	Tues 12-Mar	Wed 13-Mar
12 am							
1 am							
2 am							
3 am							
4 am							
5 am							
6 am		1					
7 am							1
8 am	3			1			
9 am	1	1	2	5		2	3
10 am	3	2	4	3		1	
11 am		2	7	8			3
12 pm	1	1	17	2		3	1
1 pm	11	3	3	2		1	
2 pm	2	1	3	7	1		
3 pm	5		3	4	9	1	1
4 pm	1		11	3	2		1
5 pm	1	2	4	2			2
6 pm							
7 pm			1			2	
8 pm							
9 pm							
10 pm							
11 pm							

**Daily**

Prorated Helicopter Takeoffs				<i>Not Available</i>			
Total Aircraft Takeoffs	28	13	55	37	12	10	12

**Weekly**

Prorated Helicopter Takeoffs	n/a
Fixed-wing Takeoffs	167
Total Aircraft Takeoffs	167

Source: DVRPC



---

**2012/13 Aircraft Operations Counting Program**

---

**Wings Field Airport (LOM)**

**Montgomery County**

**Blue Bell, PA 19422**

Runway Orientation: 06/24

Runway Length: 3,700 ft.

**Table 18: Wings Field Airport (LOM) Based Aircraft**

Based Aircraft Fleet Mix	
Single Engine	101
Multi-engine	5
Jet	3
Helicopter	2
Glider	0
Total	111

Source: Wings Field Airport

Flight operations have declined 13 percent since the last survey three years ago. This is in line with most of the airports counted in this period. However, based aircraft were reported to have increased to 111 from the previous 102, which presents a positive indication of airport vitality.

Many changes have taken place at Wings Field during this survey period. Several older hangars have been replaced by new ones, helicopter operations were moved to a new paved transient area, and a new FBO, Fly Advanced, was selected to manage the airport operations. In addition, during the past year, the terminal building was remodeled to provide better services to chartered flight operations.

Figure 18: Wings Field Airport (LOM) Aerial Photo



**2012/13 Aircraft Operations Counting Program**

---

**DVRPC Aircraft Counting Program**

Airport: Wings Field Airport (LOM)

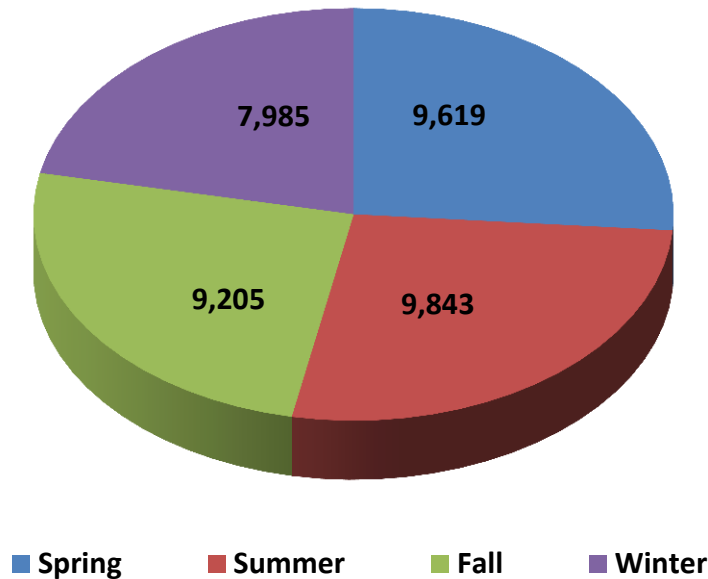
County: Montgomery

**Table 19: Wings Field Airport (LOM) Annual Summary**

Season	Year	Average Daily Operations	Total Operations	Percentage of Annual Operations
Spring	2012	103	9,619	26%
Summer	2012	105	9,843	27%
Fall	2012	103	9,205	25%
Winter	2013	90	7,985	22%
<b>Annual Operations:</b>		<b>2012/13</b>	<b>36,652</b>	

Margin of Error: 8 at 95% confidence  
Source: DVRPC

**Figure 19: Wings Field Airport (LOM) Seasonal Summary**



Source: DVRPC

## 2012/13 Aircraft Operations Counting Program

---

Weekly Activity Report  
 LOM Wings Field  
 LOM Spring I 2012

For: 12 April 2012 -18 April 2012

Day->	Thurs 12-Apr	Fri 13-Apr	Sat 14-Apr	Sun 15-Apr	Mon 16-Apr	Tues 17-Apr	Wed 18-Apr
12 am							
1 am							
2 am							
3 am							
4 am							
5 am							
6 am		1	1				
7 am		3	3	2		1	1
8 am	3	2	3	2		1	3
9 am	2	6	2	3	8	1	7
10 am		10	5	6	10	3	2
11 am	2	8	3	2	5	1	1
12 pm	1	3	7	2	3	3	2
1 pm	3	4	4	8	3	2	5
2 pm	1	2	3	5	2	1	5
3 pm	4	5	4	3	6	3	4
4 pm	3	4	10	5	9	3	2
5 pm	1	5	7	2	9	5	5
6 pm	2	3	1	3	2	5	1
7 pm		1		1	1	5	2
8 pm	4		1	1		1	2
9 pm	1						
10 pm							
11 pm							

**Daily**

Prorated Helicopter Takeoffs	4	3	3	4	3	3	3
Total Aircraft Takeoffs	31	60	57	49	61	38	45

**Weekly**

Prorated Helicopter Takeoffs	23
Fixed-wing Takeoffs	318
Total Aircraft Takeoffs	341

Source: DVRPC

## 2012/13 Aircraft Operations Counting Program

---

Weekly Activity Report  
 LOM Wings Field  
 LOM Spring II 2012

For: 19 May 2012 - 25 May 2012

Day->	Sat 19-May	Sun 20-May	Mon 21-May	Tues 22-May	Wed 23-May	Thurs 24-May	Fri 25-May
12 am							
1 am							
2 am							2
3 am							
4 am							
5 am				1			
6 am			1	1		1	
7 am	2		2		1	1	
8 am	9	12	1				
9 am	6	13	5	1	7	3	
10 am	5	6	2		2	1	1
11 am	8	9	2	1	6	2	2
12 pm	4	8	1		8	3	5
1 pm	6	9	3	1	2	4	3
2 pm	8	3	5	9	5		6
3 pm	12	7	5	8	5		13
4 pm	5	6		5	9	3	13
5 pm	5	6	1	9	2	2	4
6 pm	4	3	1	3		1	3
7 pm	1	2	1	1		1	1
8 pm	1	1					1
9 pm			1	2			
10 pm	1	1		1			
11 pm							

**Daily**

Prorated Helicopter Takeoffs	3	3	4	3	3	4	3
Total Aircraft Takeoffs	80	89	35	46	50	26	57

**Weekly**

Prorated Helicopter Takeoffs	23
Fixed-wing Takeoffs	360
<b>Total Aircraft Takeoffs</b>	<b>383</b>

Source: DVRPC

## 2012/13 Aircraft Operations Counting Program

---

Weekly Activity Report  
 LOM Wings Field  
 LOM Summer I 2012

For: 12 July 2012 - 18 July 2012

Day->	Thurs 12-Jul	Fri 13-Jul	Sat 14-Jul	Sun 15-Jul	Mon 16-Jul	Tues 17-Jul	Wed 18-Jul
12 am		1					
1 am				1			
2 am							
3 am							
4 am							
5 am				1			
6 am							5
7 am		4	2	3		4	1
8 am	1	7	3	1	3	3	3
9 am	3	7	3	3	2	3	7
10 am	3	2	2	2	3	4	14
11 am	2	2	7	6	6	4	5
12 pm	1	5	1	1	6	2	1
1 pm	4	5	5	6	2	1	6
2 pm	3	8	12	3	3	2	5
3 pm	7	2	7	3	4		5
4 pm	10	1	10	5	5	3	
5 pm	8	2	4	7	1		
6 pm	9	4	3	1		1	
7 pm	3	1		3		1	3
8 pm			1			1	
9 pm	1	5		1		3	
10 pm	1	1				6	
11 pm	2					1	

**Daily**

Prorated Helicopter Takeoffs	3	3	3	4	4	3	3
Total Aircraft Takeoffs	61	59	63	51	39	42	58

**Weekly**

Prorated Helicopter Takeoffs	23
Fixed-wing Takeoffs	350
 Total Aircraft Takeoffs	 373

Source: DVRPC

## 2012/13 Aircraft Operations Counting Program

---

Weekly Activity Report  
 LOM Wings Field  
 LOM Summer II 2012

For: 23 August 2012 - 29 August 2012

Day->	Thurs 23-Aug	Fri 24-Aug	Sat 25-Aug	Sun 26-Aug	Mon 27-Aug	Tues 28-Aug	Wed 29-Aug
12 am							
1 am							1
2 am							
3 am							
4 am							
5 am	1		1				
6 am						2	2
7 am	2		3	2	2	3	2
8 am	1	2	3	3		5	4
9 am	6	7	3	3	1	1	3
10 am	8	4	8	6	3	4	4
11 am	1	6	7	3	1	1	2
12 pm	3	6	4	2	2	1	5
1 pm	5	4	6	4	3	4	3
2 pm	10	4	5	5	2	5	2
3 pm	5	3	3	3	5	2	6
4 pm	13	3	4	3	2	4	2
5 pm	12	11	2	1	1	2	3
6 pm	7	4		3	1	2	1
7 pm	3				4	1	4
8 pm	1			2		1	
9 pm	4			2			
10 pm				1			
11 pm							

**Daily**

Prorated Helicopter Takeoffs	3	3	3	3	4	4	3
Total Aircraft Takeoffs	85	57	52	46	31	42	47

**Weekly**

Prorated Helicopter Takeoffs	23
Fixed-wing Takeoffs	337
<b>Total Aircraft Takeoffs</b>	<b>360</b>

Source: DVRPC

## 2012/13 Aircraft Operations Counting Program

---

Weekly Activity Report  
 LOM Wings Field  
 LOM Fall I 2012

For: 12 October 2012 - 18 October 2012

Day->	Fri 12-Oct	Sat 13-Oct	Sun 14-Oct	Mon 15-Oct	Tues 16-Oct	Wed 17-Oct	Thurs 18-Oct
12 am							
1 am							
2 am							
3 am							
4 am							
5 am							
6 am			1				
7 am	1	1	1	1	1		1
8 am	2	2	2		1	1	3
9 am	3	9	1	1	2	5	10
10 am	7	5	4	2	3	7	13
11 am	1	4	7	2	4	4	3
12 pm	2	2	9	5	1	3	5
1 pm	4	5	2	6	5	6	1
2 pm	7	13	6	2	3	7	6
3 pm	3	5	4	2	3	3	5
4 pm	6	10	1	8	3	8	5
5 pm	4	5	3	3	3	5	3
6 pm	1	1	3	1	2	3	1
7 pm			1	2		2	2
8 pm			3			1	1
9 pm							
10 pm							
11 pm		1				1	

**Daily**

Prorated Helicopter Takeoffs	3	3	3	4	4	3	3
Total Aircraft Takeoffs	44	66	51	39	35	59	62

**Weekly**

Prorated Helicopter Takeoffs	23
Fixed-wing Takeoffs	333
 Total Aircraft Takeoffs	 356

Source: DVRPC



## 2012/13 Aircraft Operations Counting Program

---

Weekly Activity Report  
 LOM Wings Field  
 LOM Fall II 2012

For: 8 November 2012 - 14 November 2012

Day->	Thurs 8-Nov	Fri 9-Nov	Sat 10-Nov	Sun 11-Nov	Mon 12-Nov	Tues 13-Nov	Wed 14-Nov
12 am							
1 am							
2 am							
3 am							
4 am					1		
5 am							
6 am	1					2	1
7 am	3	3	1			1	1
8 am	2		6	3	1	3	6
9 am	1	2	3	2	5	1	10
10 am	4	3	11	6	2	1	
11 am	2	2	7	6	3	2	1
12 pm	5	1	11	4	4	3	2
1 pm	4	7	10	4	2	3	2
2 pm	3	7	6	11	10	1	4
3 pm	3	2	1	10	4	1	6
4 pm	5	5	4	11	2	4	4
5 pm	3	1	3	10	3	4	5
6 pm	2	6		8	4	1	
7 pm	1	1	2	2		3	
8 pm		2	2		1	1	
9 pm			2	2			
10 pm							
11 pm			1				

**Daily**

Prorated Helicopter Takeoffs	4	3	3	3	3	4	3
Total Aircraft Takeoffs	43	45	73	82	45	35	45

**Weekly**

Prorated Helicopter Takeoffs	23
Fixed-wing Takeoffs	345
 Total Aircraft Takeoffs	 368

Source: DVRPC

## 2012/13 Aircraft Operations Counting Program

---

Weekly Activity Report  
 LOM Wings Field  
 LOM Winter I 2013

For: 17 January 2013 - 23 January 2013

Day->	Thurs 17-Jan	Fri 18-Jan	Sat 19-Jan	Sun 20-Jan	Mon 21-Jan	Tues 22-Jan	Wed 23-Jan
12 am				1			
1 am							
2 am							
3 am							
4 am							
5 am							
6 am	1				1		
7 am		1	1	1			
8 am	3	4	3	3	3	1	1
9 am	3	6	5	6	2	3	1
10 am	2	1	6	7	5	1	3
11 am	1	2	4	4	8	3	1
12 pm	1	2	7	8	5	3	4
1 pm	2	4	8	11	10	1	1
2 pm	9	6	7	7	12	3	5
3 pm	3	4	10	5	8	2	4
4 pm	7	6	7	3	1	1	3
5 pm	2	7	3	2	3	2	
6 pm	1	2	2	3			1
7 pm	1		1				1
8 pm							
9 pm		1					
10 pm							
11 pm							

**Daily**

Prorated Helicopter Takeoffs	3	3	3	4	3	4	3
Total Aircraft Takeoffs	39	49	67	65	61	24	28

**Weekly**

Prorated Helicopter Takeoffs	23
Fixed-wing Takeoffs	310
 Total Aircraft Takeoffs	 333

Source: DVRPC

## 2012/13 Aircraft Operations Counting Program

---

Weekly Activity Report      13 February 2013 - 19 February 2013  
 LOM Wings Field  
 LOM Winter II 2013

Day->	Wed 13-Feb	Thurs 14-Feb	Fri 15-Feb	Sat 16-Feb	Sun 17-Feb	Mon 18-Feb	Tues 19-Feb
12 am							
1 am							
2 am							
3 am							
4 am							
5 am						1	1
6 am							
7 am	2	1	1	1	3	1	3
8 am	5	1	4	3	3	2	1
9 am	3	5	8	5	5	2	3
10 am	3	2	5	7	9	2	2
11 am	8	4	6	4	6	7	3
12 pm	5	6	7	2	7	3	2
1 pm	4	4	8	3	5	1	3
2 pm	5	3	7	6	3	2	5
3 pm	2	7	2	3	4	2	1
4 pm	2	1	3	1	2	3	1
5 pm	1	1	1	1	1	1	1
6 pm						1	2
7 pm		1	1			2	1
8 pm							
9 pm							
10 pm							
11 pm							

**Daily**

Prorated Helicopter Takeoffs	3	3	3	3	4	3	4
Total Aircraft Takeoffs	43	39	56	39	52	33	33

**Weekly**

Prorated Helicopter Takeoffs	23
Fixed-wing Takeoffs	272
 Total Aircraft Takeoffs	 295

Source: DVRPC



**Publication Title:** 2012/13 Aircraft Operations Counting Program: Operations for Eight Non-Towered Airports

**Publication Number:** 12082

**Date Published:** January 2014

**Geographic Area Covered:** New Castle County in Delaware; Burlington County in New Jersey; Bucks, Chester, and Montgomery counties in Pennsylvania.

**Key Words:** Aircraft operations, helicopter operations, airports, fixed-wing airplane, rotorcraft, takeoffs, landings, count, activity, estimate, seasonal, annual, acoustic counter, based aircraft, runway length.

**Abstract:** This technical report presents aircraft operations estimates for eight non-towered airports in the Delaware Valley aviation planning area. Eight acoustic counts were taken at each airport, starting in April 2012 and ending in March 2013; each sample covered seven continuous days. The samples were extrapolated over the entire year and the results are presented in this report. Results are used by multiple sources to monitor aircraft activity levels in the Delaware Valley and as a base for planning and forecasting documents.

**Staff Contact:**

Kale Driemeier  
Transportation Planner  
Office of Freight and Aviation  
Phone: (215) 238-2887  
kdriemeier@dvrpc.org

Delaware Valley Regional Planning Commission  
190 N. Independence Mall West, 8th Floor  
Philadelphia PA 19106  
Phone: (215) 592-1800  
Fax: (215) 592-9125  
www.dvrpc.org



**190 N. INDEPENDENCE MALL WEST**  
**8TH FLOOR**  
**PHILADELPHIA, PA 19106**  
**P:215-592-1800**  
**[www.dvrpc.org](http://www.dvrpc.org)**