

Engaging the Public Successfully in Regional Planning

Mark Butala
Manager, Comprehensive Planning
Southern California Association of Governments



New Partners for Smart Growth
February 3, 2011

SCAG Region



- 6 Counties
- 190 Cities
- 38,000 square miles
- 19 million people
- 16th largest economy in the world

**Regional Population is forecast
to increase by 5,500,000
people to 24,000,000 between
2008 & 2035**

Challenges:

- **Traffic Congestion**
- **Goods Movement**
- **Air Quality**
- **Income**
- **Housing Affordability**
- **Shrinking Financial Resources**



**Like adding two
cities the size of
Chicago**



Forum for Regional Dialogue

- Regional Council of elected officials (83 members)
- Three policy committees (transportation, housing, environment)
- Over 15 subcommittees, task forces and working groups
- 6 County Transportation Commissions (CTCs)
- 14 Subregions
- Dozens of other partner & stakeholder organizations

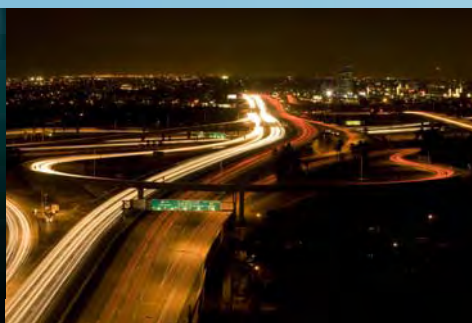


Regional Transportation Plan

- Required by federal government to develop and update Regional Transportation Plan (RTP) every four years
- Must be long-range (~20 years)
- Must be financially constrained
- Must meet air quality conformity
- Transportation projects must be included to receive federal & state funds, & federal environmental clearance
- And...



ASSOCIATION of GOVERNMENTS
Metrolink. Image courtesy of Metro © 2010
LACMTA



Port: Image courtesy of Port of Long Beach



www.compassblueprint.org
Metro Gold Line. Image courtesy of Metro
© 2010 LACMTA



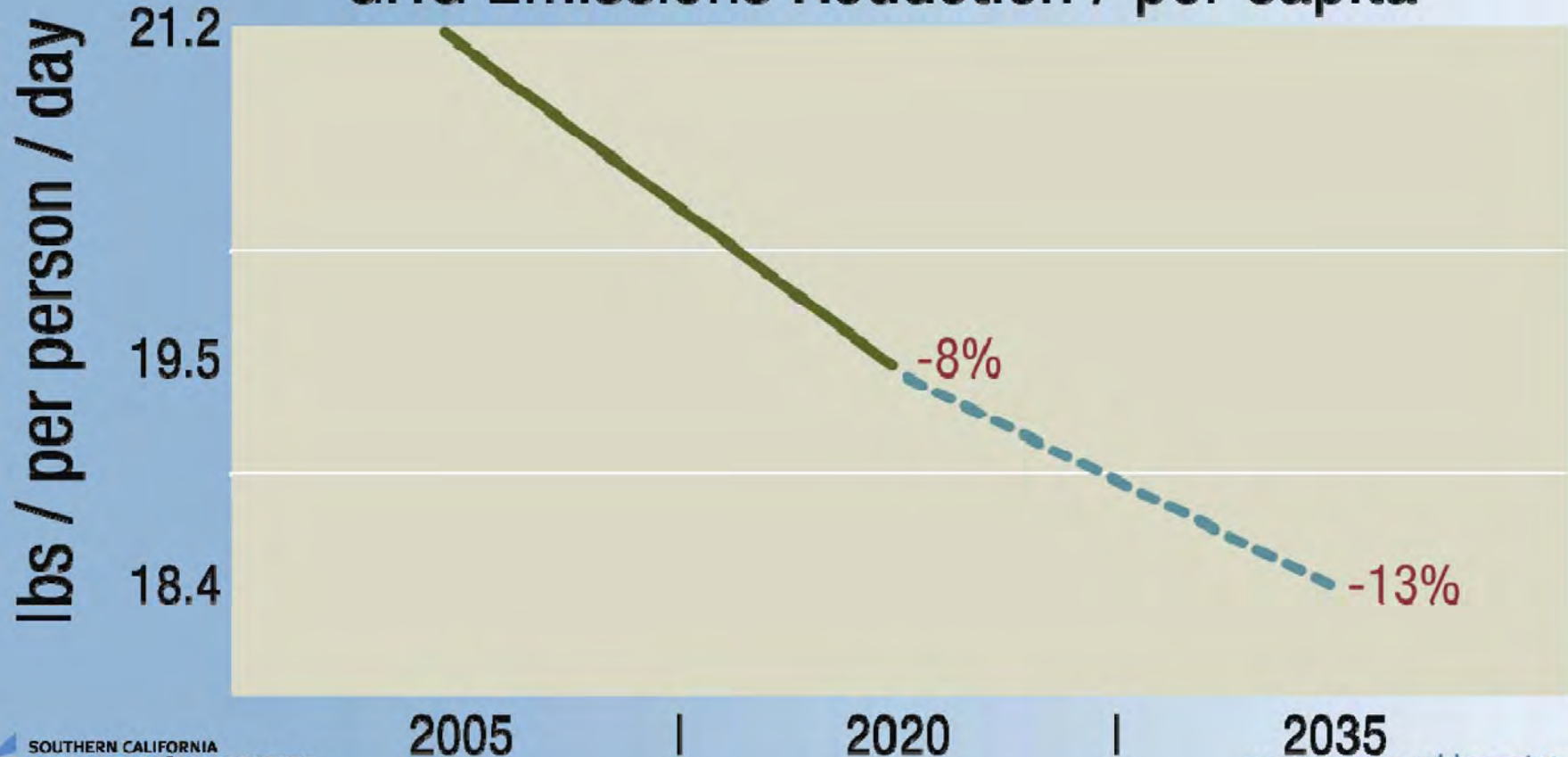
SB 375



Sustainable Communities Strategy (SCS)

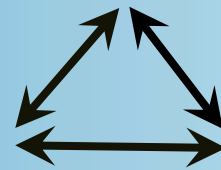
RTP must now incorporate a SCS that will meet the regional Greenhouse Gas emission target.

GHG Emissions Reduction / per capita



Sustainable Communities Strategy (SCS)

- The SCS includes eight required elements aiming to better integrate regional and local land use & housing strategies with transportation investments and transportation policies to achieve the state's Greenhouse Gas Emissions (GHG) reduction targets.



Menu of Policies

Land Use Residential Density
Land Use Mix
Street Connectivity
Regional Access to Employment
Jobs-Housing Balance

Infrastructure Distance to Transit
Transit Service
Bicycle Infrastructure

Policies Telecommuting
Employer-Based Trip Reduction

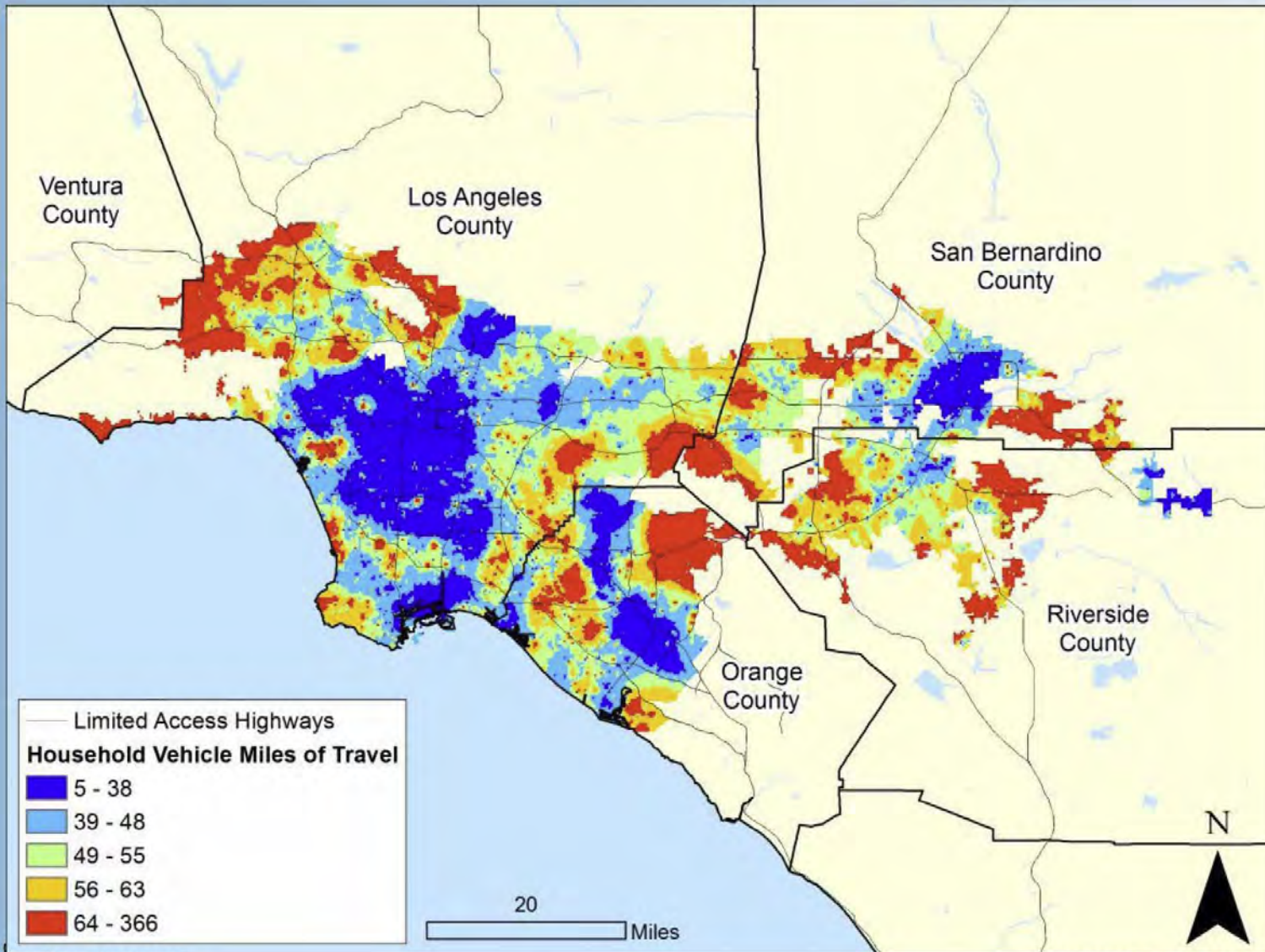
Pricing Parking Pricing
Road Pricing

Behavior Change Voluntary Travel Behavior Change

Operational Efficiency Traffic Incident Clearance programs

Travel Variations

Household Vehicle Miles of Travel, SCAG region



VMT Impacts from Various Policies

Policy	% Change in Policy	% Change in VMT
Land Use		
Residential Density	1% increase	-0.05 to -0.12%
Land Use Mix	1% increase	-0.02 to -0.11%
Street Connectivity	1% increase	-0.06 to -0.185%
Regional Accessibility	1% increase	-0.13 to -0.25%
Jobs-Housing Balance	1% increase	-0.29 to -0.35%
Infrastructure		
Distance to Transit	1 mile closer	-1.3 to -5.8%
Transit Service	1% improvement	-0.04 to -0.05%
Bicycle Infrastructure	1% increase	-0.01 to -0.02%
Policies		
Telecommuting	1.5% workers telecommute	-1.1%
Employer-Based Trip Reduction	firms > 100 employees	-1 to -1.6%
Traffic Incident Clearance	current program	-1.14%
Pricing		
Parking Pricing	workplace pricing = \$4.90/day	-1.9 to -2.6%
Road Pricing	1% increase	-0.1 to -0.15%
Behavior Change		
Voluntary Travel Behavior Change	for program participants	-0.05 to -0.08%



Use the SCS Process to Match Policy Context

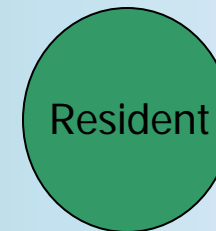
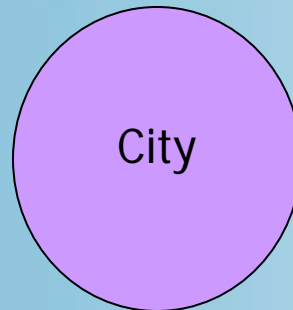
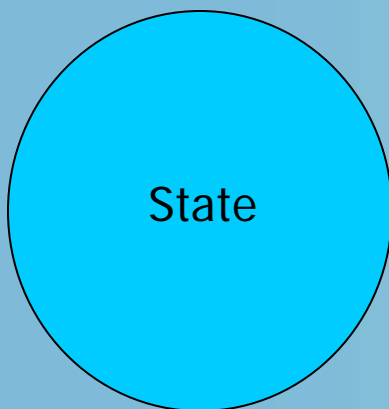
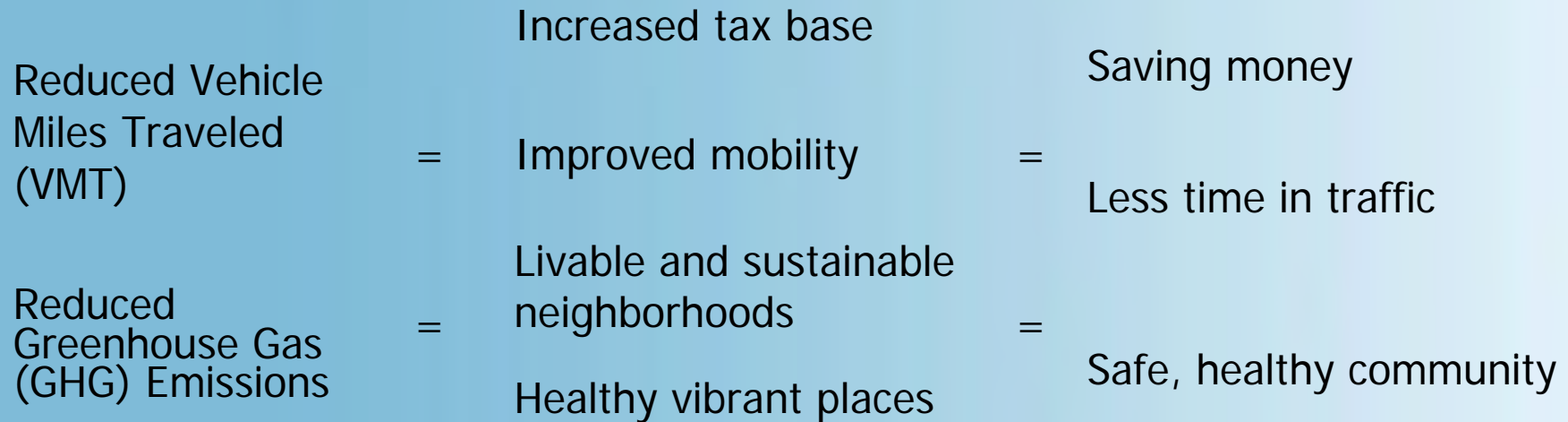
- A menu of policies
- With differing effects in different places
- The next step: Using the SCS to allow an amalgamation of plans,
 - fit to local needs
 - and local travel realities
 - and encourage innovation

Public Engagement

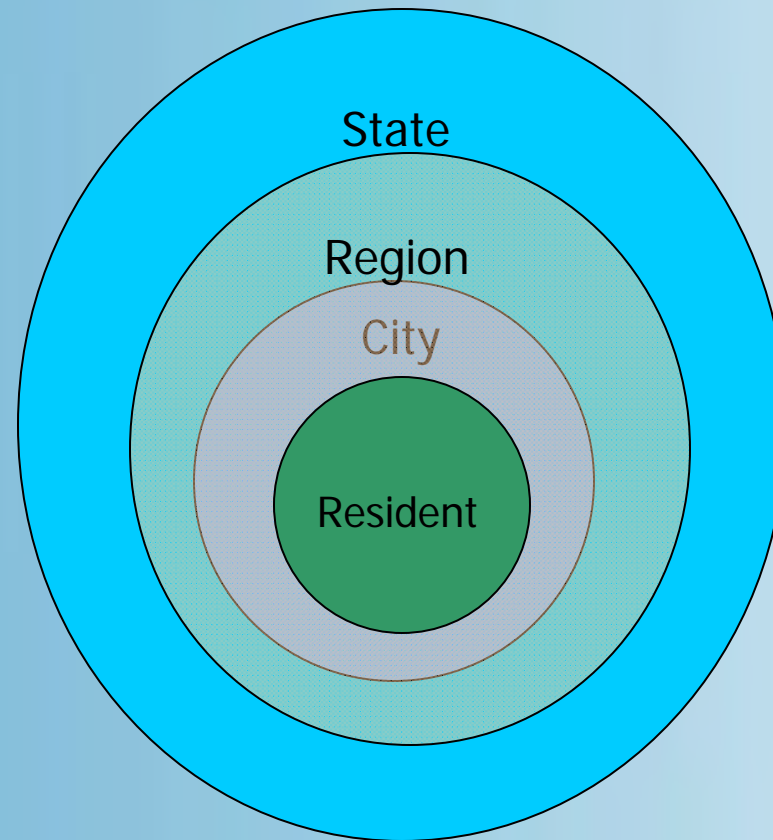
Our work plan includes:

- 196 one-on-one data gathering meetings
- 15 Subregional planning sessions
- 18 Stakeholder workshops
- 12 Workshops with elected officials
- 3 Public hearings
- Dozens of Policy Committee/Regional Council meetings

Different Words = Common Goals



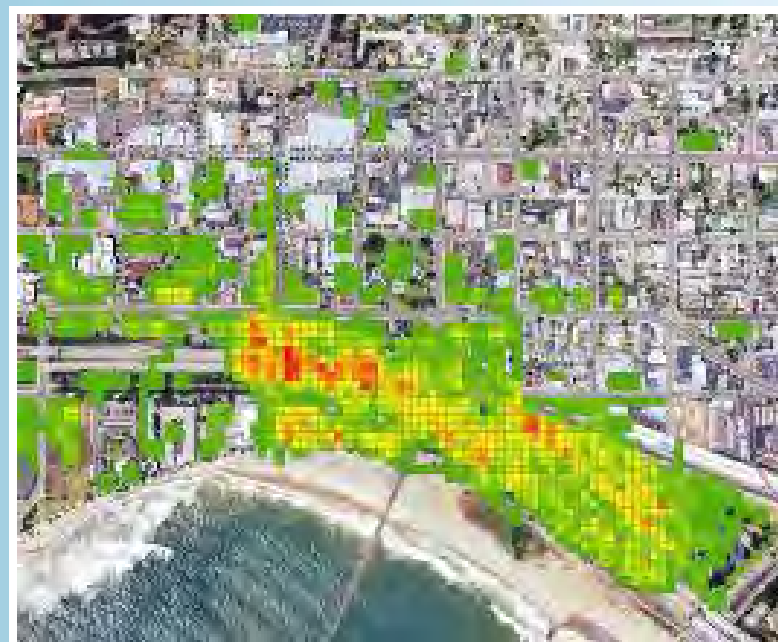
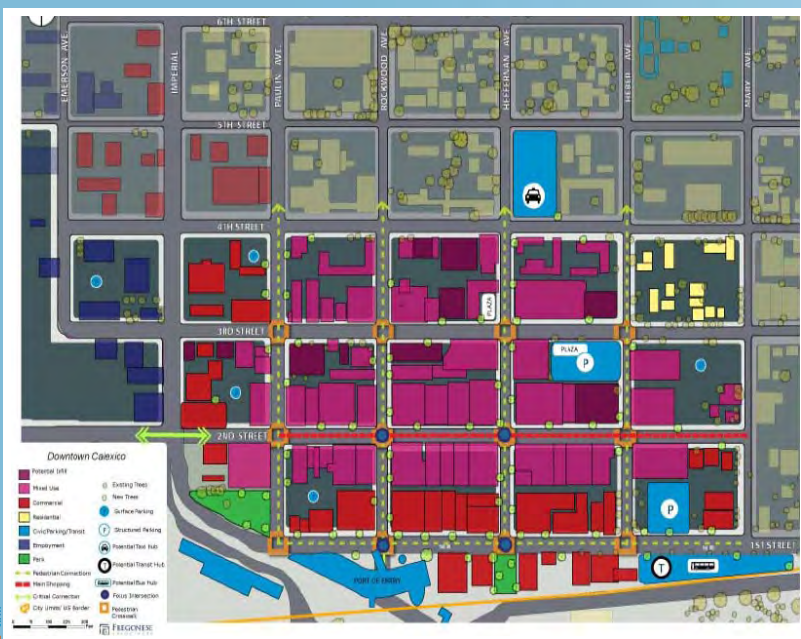
Different Words = Common Goals





Local Sustainability Planning Tool (LSPT)

A GIS-based sketch planning tool that local jurisdictions can use to analyze the impact of different land use scenarios on vehicle ownership, vehicle miles traveled (VMT), mode use, and their associated effects on GHG emissions.



Local Sustainability Planning Tool (LSPT)

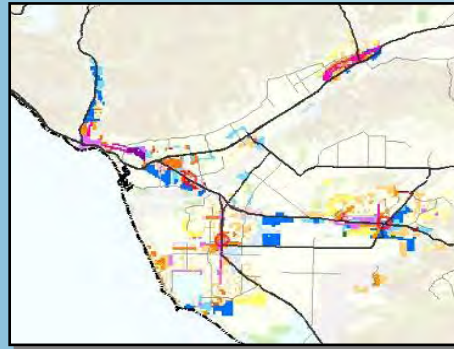
What can the LSPT do?

- ArcGIS based scenario development and visualization
- “Instant feedback” on results of scenarios
- Sensitive to key land use strategies
- Geographically scalable
- Easy to customize
- Understandable to non-technical audiences

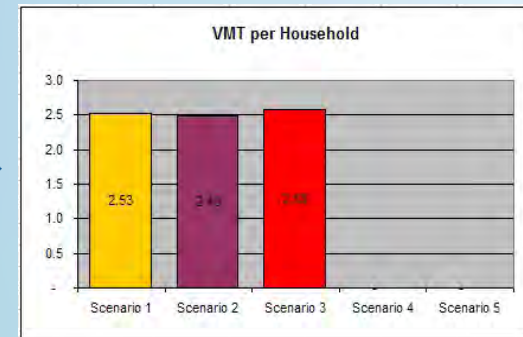
3 Step Process



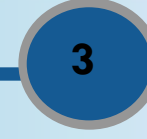
Development Types



Scenario Development



Evaluation



STEP 1: Select a Development Type

24 default types

Variety of buildings, streets,
and amenities create a “Place”



➔ “Development Type”

Generic place types for the region that group and categorize land uses for 196 local jurisdictions that have distinct land use designations.

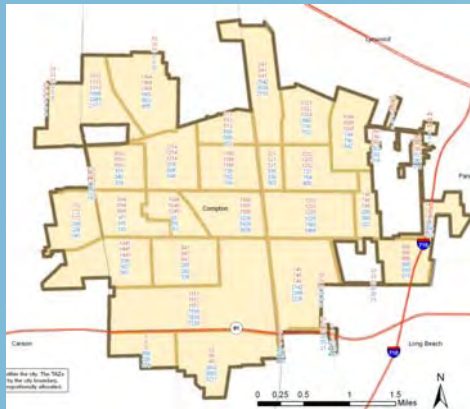
Each development type has a specific land area, housing and employment mix, density (housing and employment) and land mix.

Spatial Unit for Scenario Planning

Utilization of 5.5 acres Grid Cell

Preparation of growth forecast at the Grid cell level:

SCAG Growth Forecast



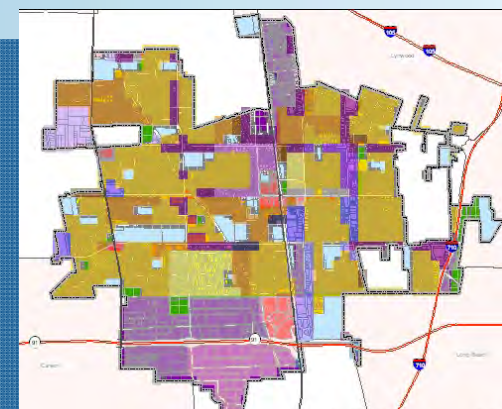
Household and Employment estimates and forecasts approved by local jurisdictions

Local Land Use Data



2008 Existing and General Plan land use datasets updated with local input

Grid Cell Data

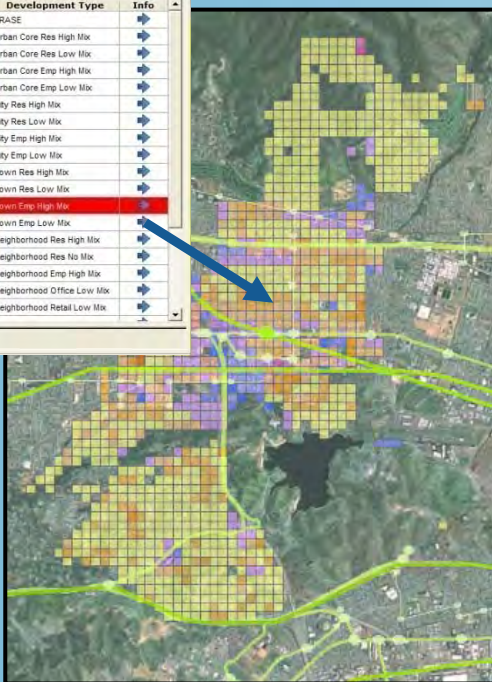


Household and Employment estimates and forecasts represented as Development Types

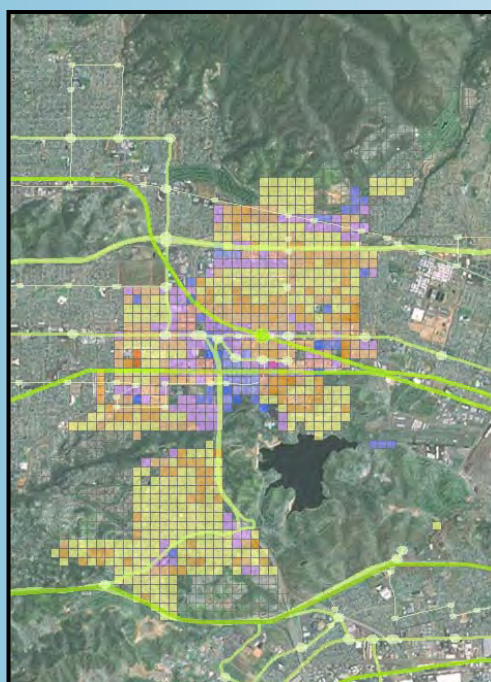
Manageable size for capturing local land use benefits on transportation while maintaining instant feedback capability

STEP 2: Paint a Scenario

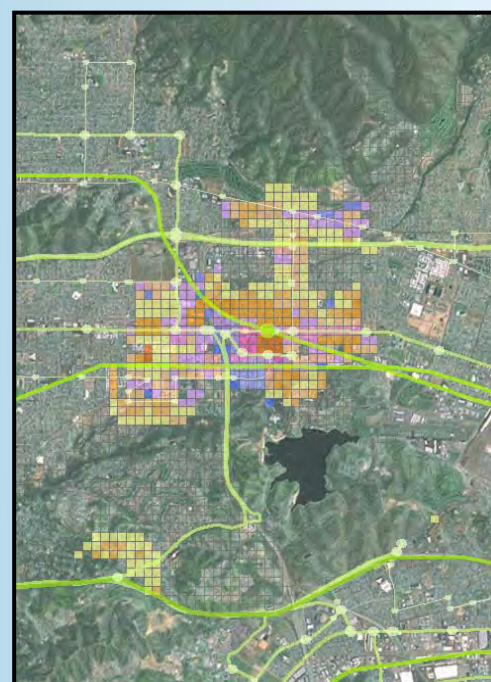
Design scenarios by painting Development Types on to the landscape



Base Year



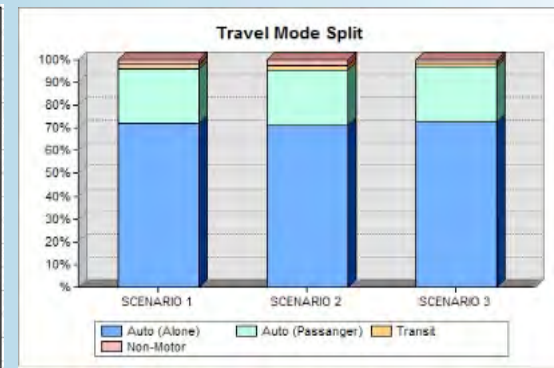
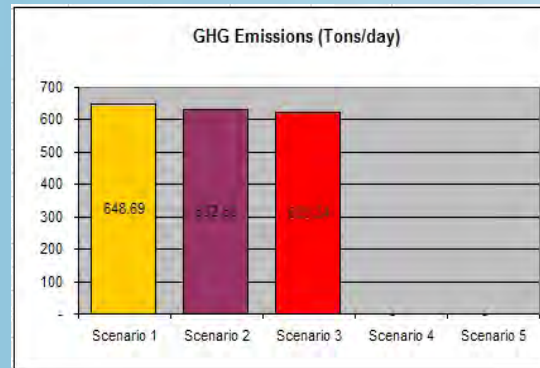
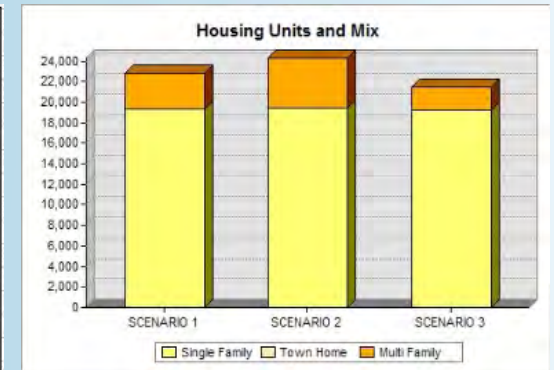
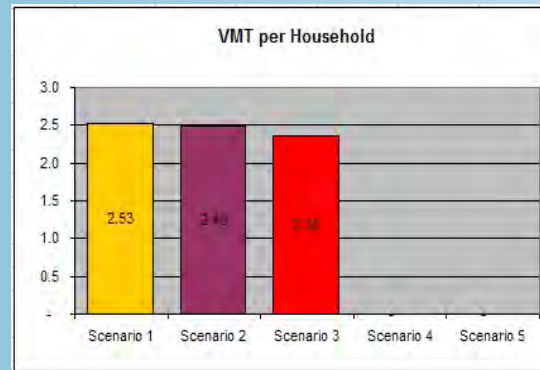
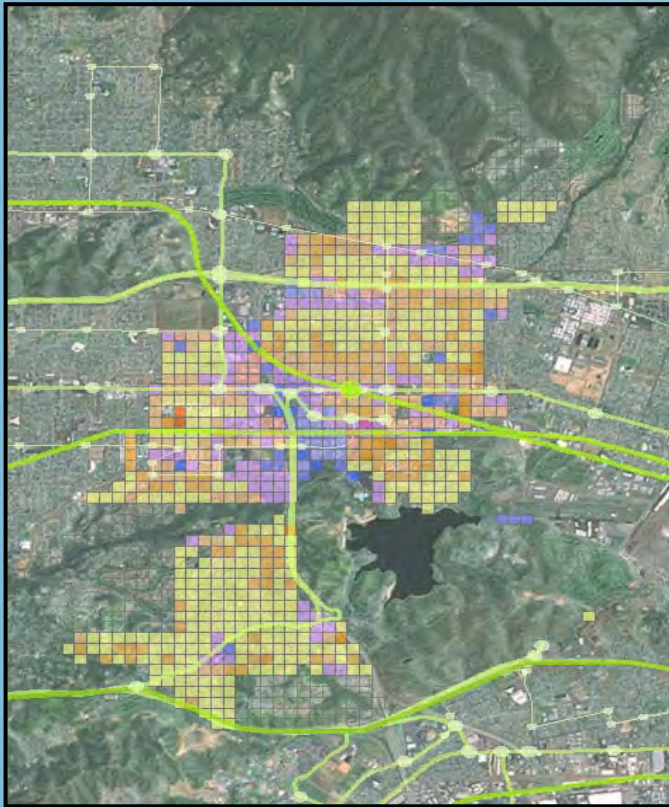
Compact Design



Transit Oriented

STEP 3: Monitor Indicators on-the-fly

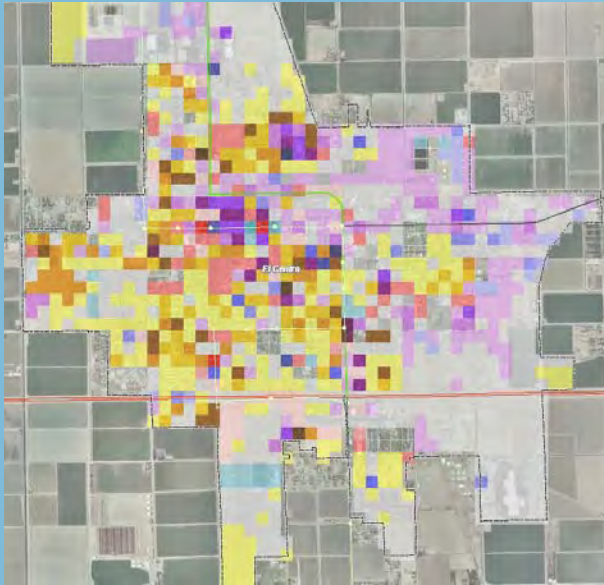
Compare the scenarios and monitor the impact of land use decisions in real time



Local Example: City of El Centro

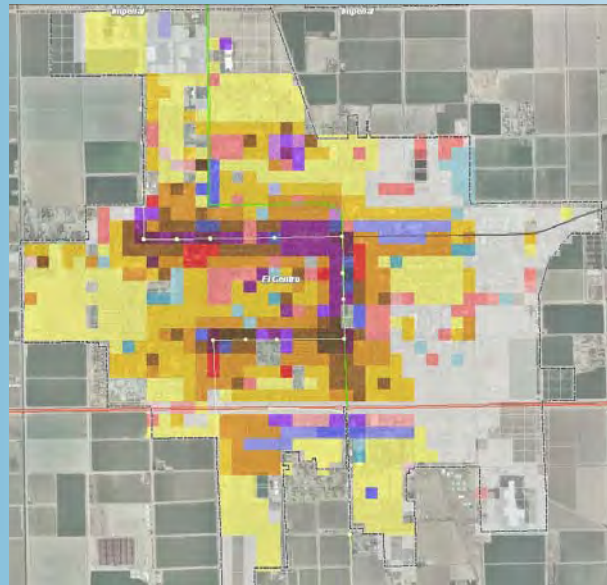
2035 Land Use Scenarios

SCENARIO 1



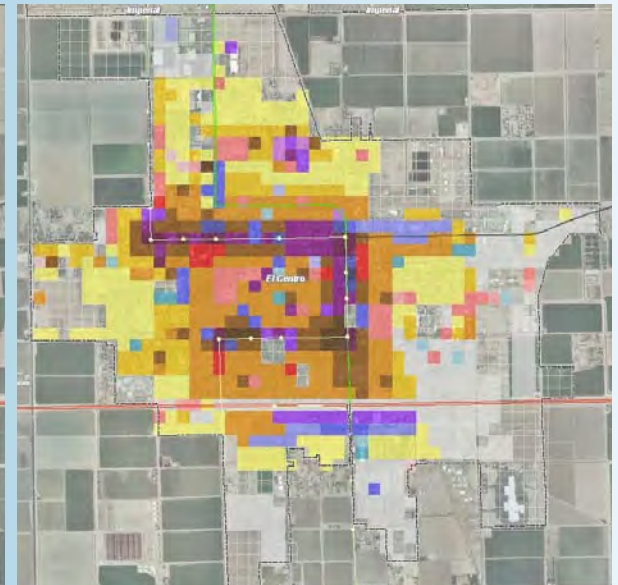
**Preliminary:
General Plan based**

SCENARIO 2



**Alternative 1:
Transit Oriented Development**

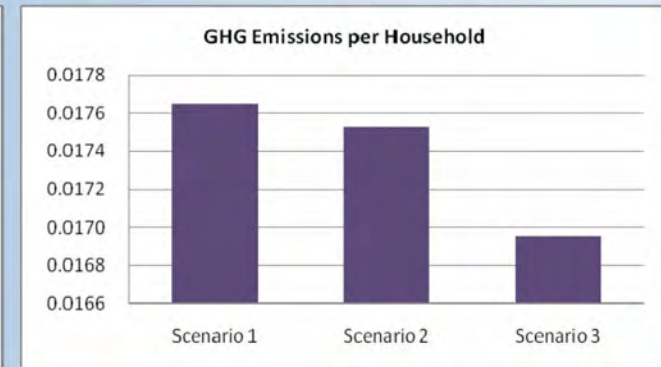
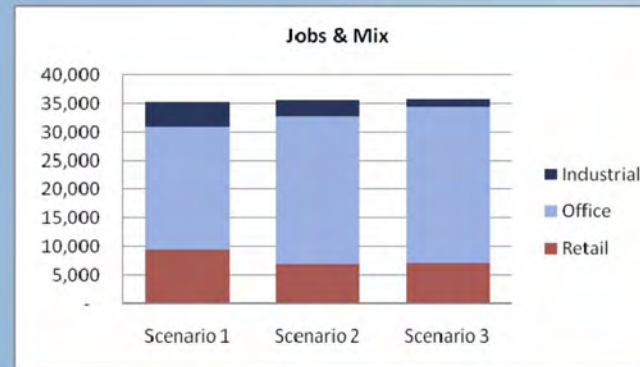
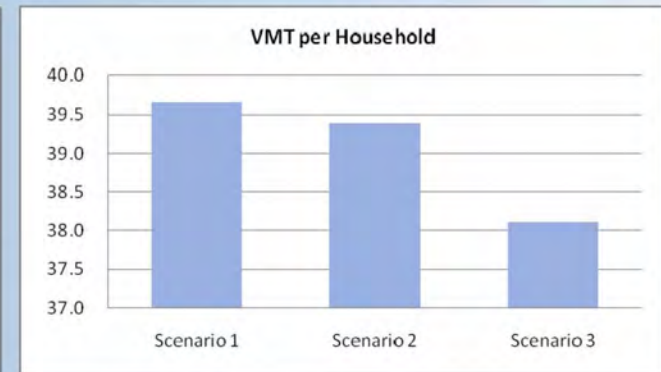
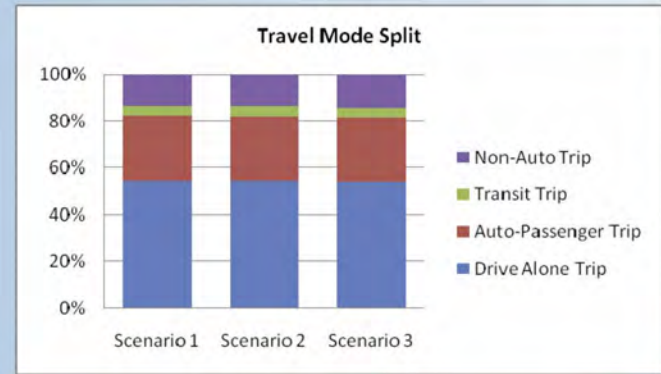
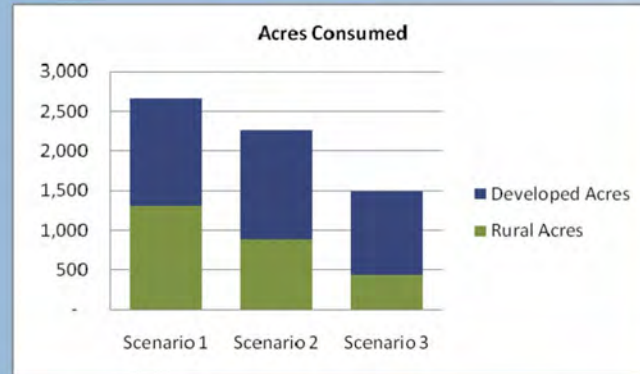
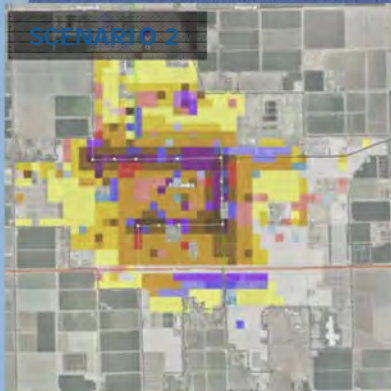
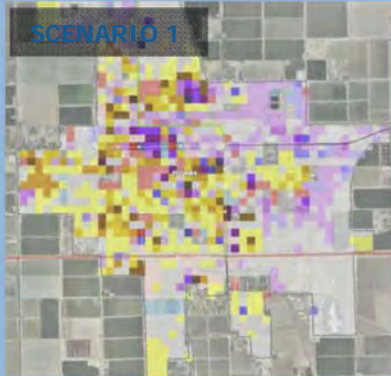
SCENARIO 3



**Alternative 2:
Compact Development**

Local Example: City of El Centro

Scenario Results



Strategies for Success

- Customize
- Partner
- Set expectations
- Engage
- Listen
- Follow up



SB 375 Timeline

2009



Research & Analysis



Regional Discussion
& Collaboration

2010



*SCAG Receives
Target from CARB



Regional/Subregional
Development of Draft
SCS or APS

2011



Draft RHNA



Regional Review
of Draft SCS



Draft RTP

2012



Submit SCS
to the State



CARB Decision
on SCS



RC Adopts RTP