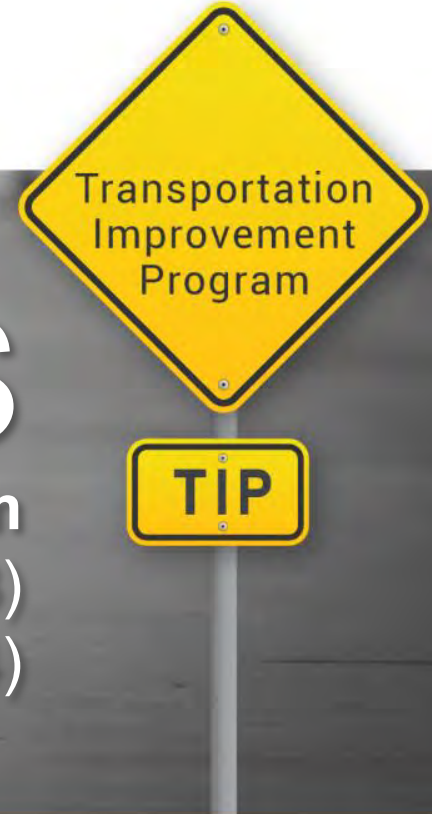


October 6, 2020 | DVRPC RTC



# TIP ACTIONS

Transportation Improvement Program  
New Jersey TIP (FY2020-FY2023)  
Pennsylvania TIP (FY2021-FY2024)



# Route 1 Improvement – South (RC1)

Bucks County | Reduce Funding

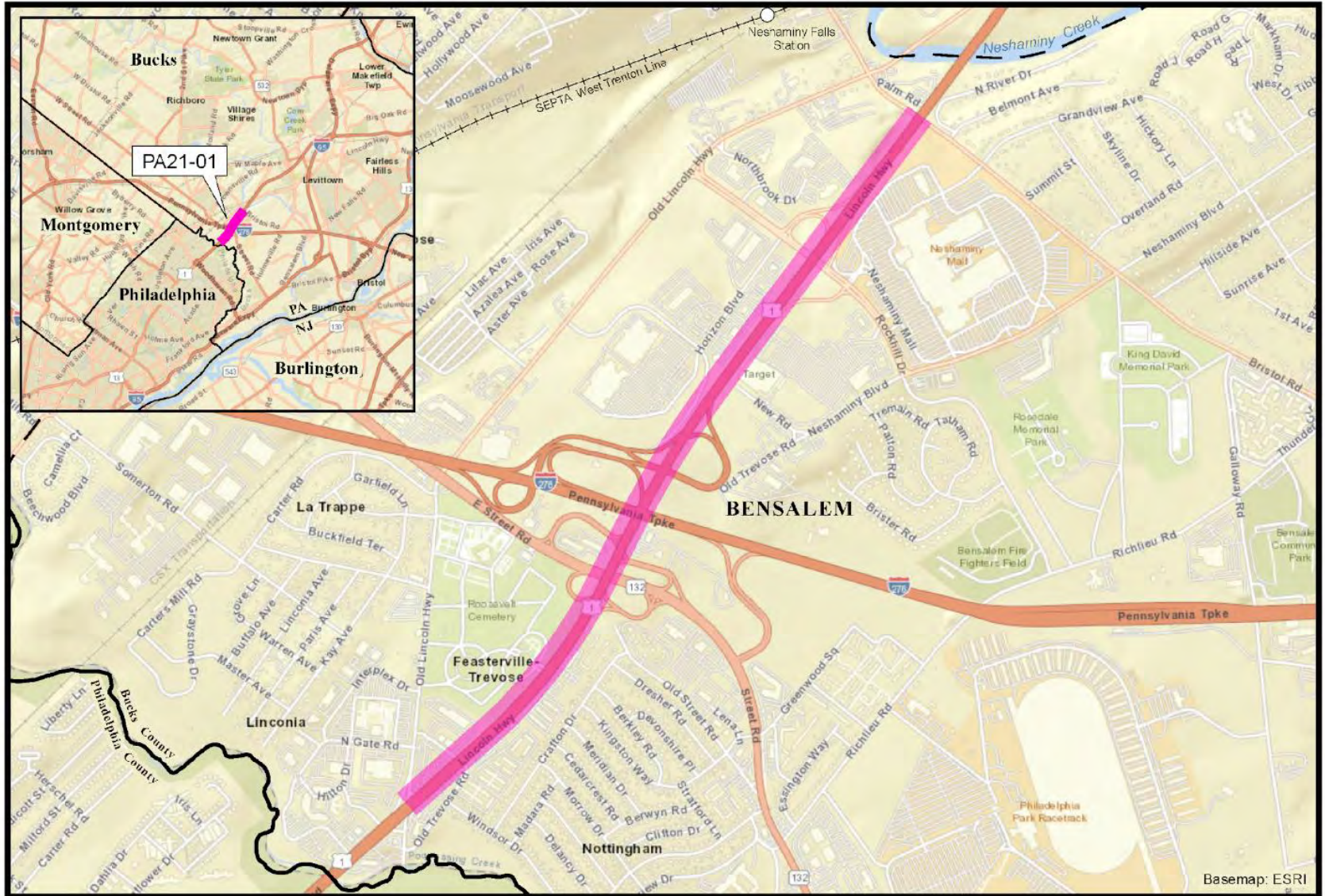
- **TIP Amendment**
- **Action:** Remove \$5,628,000 NHPP\* CON funds from FY22
- **Background:**
  - Funds are no longer needed as they were obligated under the FY2019 TIP.
  - Remaining funds (\$4,372,000) still programmed on TIP are for:
    - AC Conversion - \$2,122,000
    - Cost Increase - \$2,250,000

# Route 1 Improvement – South (RC1)

Bucks County | Reduce Funding

- **Cost Increase due to:**
- required drainage,
- relocations and repairs to a failed pipe causing a sinkhole;
- critical bridge repairs to Hulmeville Road over SEPTA tracks;
- adding a new median barrier, performing attenuator repairs, and increasing the contract quantity of temporary concrete barriers;
- temporary paving to provide a safe driving surface and temporary paving transitions at Street Road;
- utility relocations for the gas main, PECO power lines/cables, the transformer at Red Roof Inn, and the water line at Bensalem High School.

# PA21-01: Route 1 Improvement-South (Section RC1)





# TIP ACTION | Proposed – PA

*Agenda Item 5a*

**Recommend Board approval of PennDOT's TIP Amendment request:**

**Route 1 Improvement – South (RC1)**  
Remove \$5,628,000 NHPP\* CON funds from FY22.

\*This is not a cost decrease.

# ADA Ramps 2020 Philadelphia

City of Philadelphia | Reduce Funding

- **TIP Amendment**
- **Action:** Remove \$9,426,000 (FY22: \$2,713,000 STU/Toll Credit; FY23: \$3,000,000 STU/Toll Credit; FY24: \$1,655,000 STU/Toll Credit; FY25: \$2,058,000 STU/Toll Credit) from the CON phase
- **Background:**
  - Funds are no longer needed as they were obligated under the FY2019 TIP.

# ADA Ramps 2020 Philadelphia

City of Philadelphia | Reduce Funding

- **Background:**

- Project will construct Americans With Disabilities Act (ADA) compliant facilities along various state routes in the City of Philadelphia (**565 ramps**)
- Roadways include Route 1/Roosevelt Boulevard, Cottman Avenue, New State Road, Welsh Road/Roosevelt Boulevard, Bustleton Avenue/Bridge Street, Philmont Avenue, Richmond Street/Girard Avenue, Kingsessing Avenue, Parkside Avenue, Chester Avenue, 52nd Street, 42nd Street, and 65th Street.



# TIP ACTION | Proposed – PA

*Agenda Item 5b*

**Recommend Board approval of PennDOT's TIP Amendment request:**

## **ADA Ramps 2020 Philadelphia**

Remove \$9,426,000 (FY22: \$2,713,000  
STU/Toll Credit; FY23: \$3,000,000  
STU/Toll Credit; FY24: \$1,655,000  
STU/Toll Credit; FY25: \$2,058,000  
STU/Toll Credit) from the CON phase

\*This is not a cost decrease.



# US 202, Johnson Hwy to Township Line Rd (61S)

Montgomery County | Increase Funding

- **TIP Amendment**
- **Action:** Add \$33,539,000 (FY22: \$5,628,000 NHPP\*/\$2,713,000 STU\*/Toll Credit; FY23: \$3,000,000 STU\*/Toll Credit; FY24: \$2,583,000 STU\*/Toll Credit; FY25: \$2,058,000 STU\*/Toll Credit; FY26: \$2,623,000 NHPP\*/Toll Credit; FY27: \$14,934,000 STU\*/Toll Credit) to the construction phase.

# US 202, Johnson Hwy to Township Line Rd (61S)

## Montgomery County | Increase Funding

- **Background:**
  - This is not a cost increase.
  - CON funds were not able to be obligated under the previous TIP.
  - During the TIP Update, only \$20 M was programmed for AC Conversion
  - Project to be Let in December 2020.
  - Total CON cost is \$53,539,000
  - Multiple Delays
    - Delays in ROW acquisitions
    - Delays in Utility relocation
    - Delays in securing permits

## PA21-03: US 202, Johnson Highway to Township Line Road (61S)



## Project includes:

- Widening of US 202 between Johnson Hwy and Township Line Rd
- Coordinated ITS and traffic signal system will be integrated to improve traffic flow
- 5 foot bike lanes will be provided in both directions.
- Box culvert and bridge replacement
- Drainage pipes, noise walls, and SWM facilities will be installed



# TIP ACTION | Proposed – PA

*Agenda Item 5c*

**Recommend Board approval of PennDOT's TIP Amendment request:**

## **US 202, Johnson Hwy to Township Line Rd (61S)**

Add \$33,539,000 (FY22: \$5,628,000 NHPP\*/\$2,713,000 STU\*/Toll Credit;

FY23: \$3,000,000 STU\*/Toll Credit;

FY24: \$2,583,000 STU\*/Toll Credit;

FY25: \$2,058,000 STU\*/Toll Credit;

FY26: \$2,623,000 NHPP\*/Toll Credit;

FY27: \$14,934,000 STU\*/Toll Credit) to the construction phase.

\*This is not a cost increase.



# Thank You

Connect With Us!



[www.dvrpc.org/TIP](http://www.dvrpc.org/TIP)



# Greater Philadelphia Pedestrian Portal



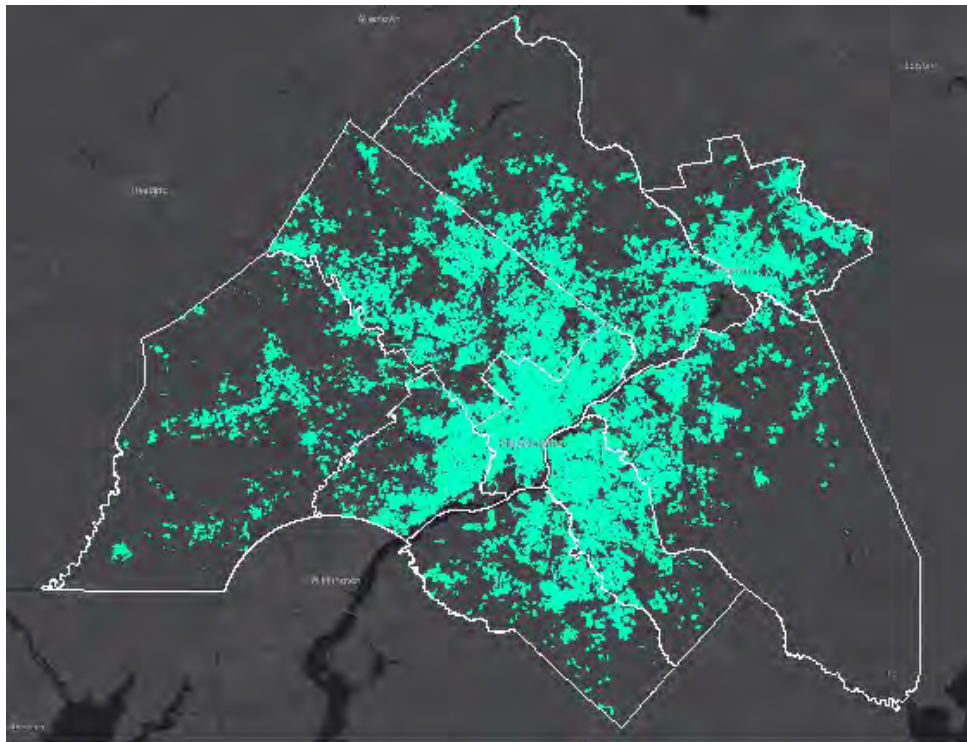
## DVRPC's RTC Meeting

Kim Korejko, Manager of Data Coordination  
October 2020

# DVRPC's Pedestrian Facilities Inventory

Three features were captured

1. Sidewalks
2. Crosswalks
3. Curb Ramps



# 1. Sidewalks

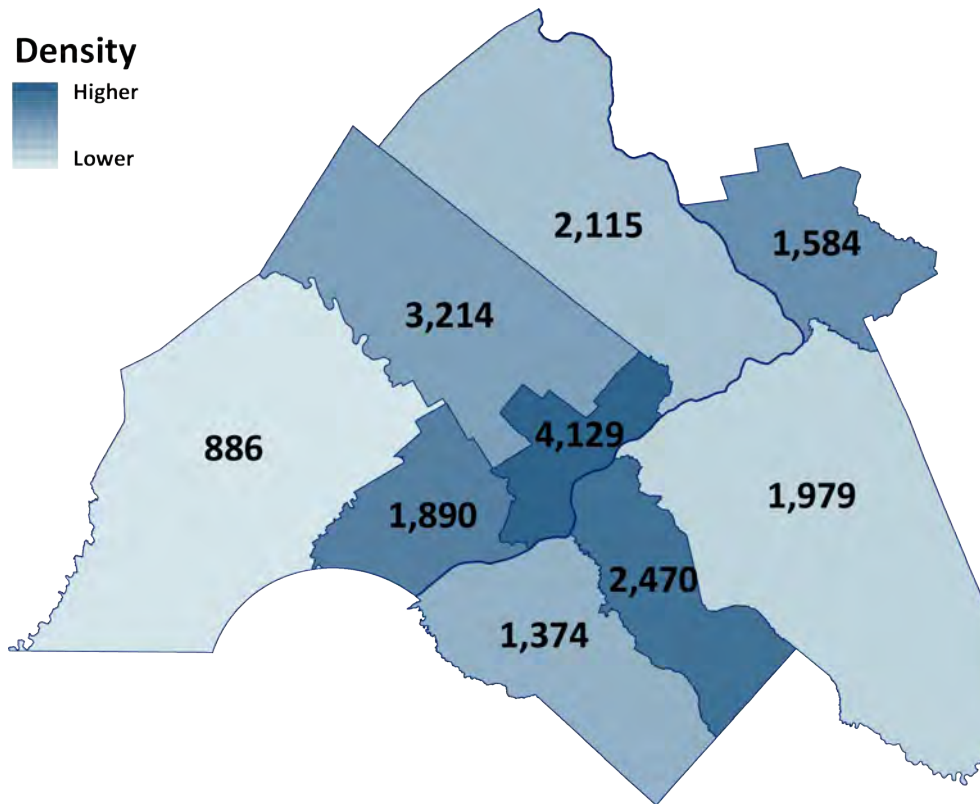
A paved pedestrian path running adjacent to a public road. Only existing sidewalks digitized.

- Surface Material: concrete, asphalt, brick, mixed, paver, other, unknown





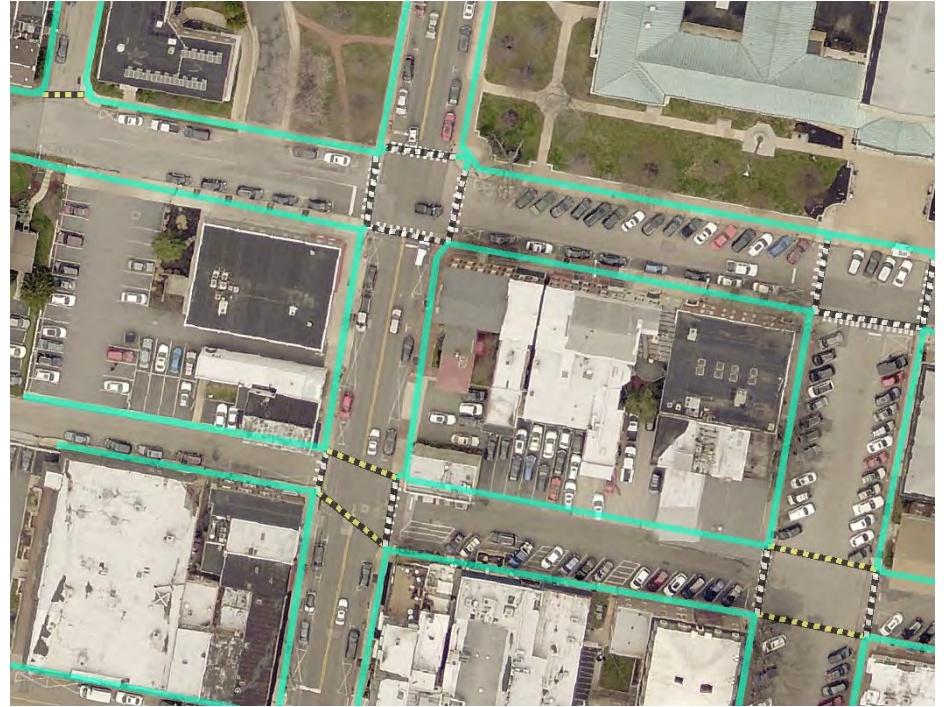
# Miles of Sidewalk in Greater Philadelphia



# Crosswalks

Any marked or unmarked path across a roadway, most often found at intersection.

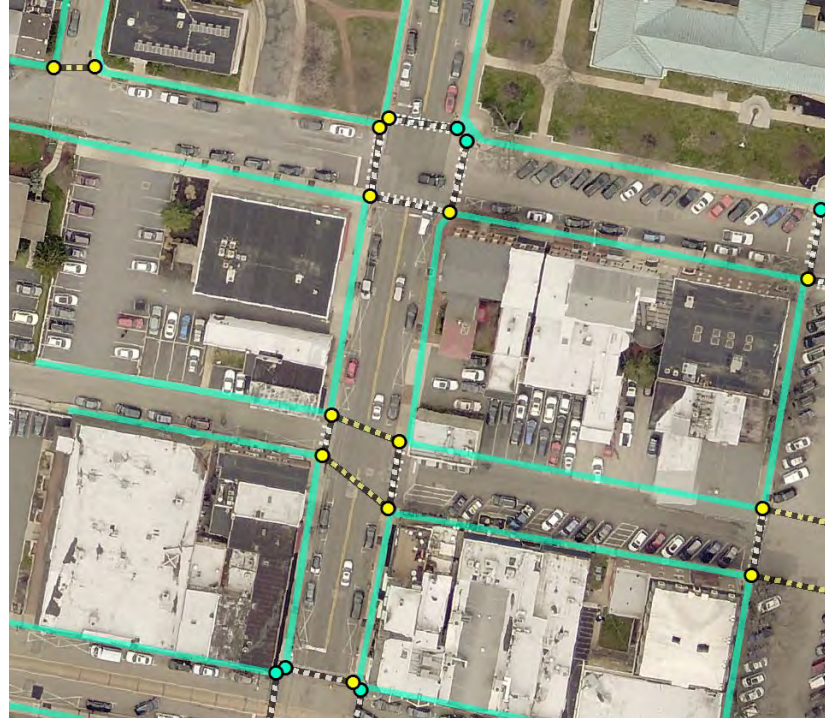
- Type: bar pairs, continental, dashed, decorative, diagonal, ladder, parallel, unmarked
- Raised: yes/no



# Curb Ramps

Point where a crosswalk connects to a sidewalk.

- Status: proposed, assumed, existing
- Position: island/median, mid-block, multidirectional, other, perpendicular, single direction



# What's Next?

- Analyze the completed dataset to identify gaps in the network
- Continue to improve the inventory
- Share the product with our planning partners through an online platform
- Develop funding program to aide in the construction of sidewalks

# Greater Philadelphia Pedestrian Portal



## What you can do with the Greater Philadelphia Pedestrian Portal

Explore Greater Philadelphia's sidewalk inventory or plan your next pedestrian project to join a shared conversation about walkability in our region.



View our regional sidewalk map



**COMING SOON!**  
Edit the network



**COMING SOON!**  
Plan & share projects

# walk.dvrpc.org > Explore

The screenshot displays the 'Explore' interface of the walk.dvrpc.org website. At the top left, the 'GREATER PHILADELPHIA PEDESTRIANportal' logo is visible alongside the 'dvrpc REGIONAL PLANNING COMMISSION' logo. The top right navigation bar includes 'Explore', 'Edit', and 'Plan' buttons. A search bar with the placeholder text 'Search the map' is located in the upper right corner. The main map area shows a network of streets including S Davis Ave, E Pine St, Hopkins Ave, Hopkins Rd, and Jans Ave. Pedestrian routes are indicated by blue lines with circular nodes at intersections. A vertical toolbar on the right side of the map contains icons for zooming in (+) and out (-), a full-screen icon, a satellite view icon, a share icon, a print icon, and a download icon. At the bottom right of the map, the text 'City of Philadelphia, State of New Jersey, Esri, HERE, Garmin, INCREMENT P, NGA, USGS' is displayed.

# walk.dvrpc.org > Edit

GREATER PHILADELPHIA PEDESTRIANportal | DELAWARE VALLEY dvrpc REGIONAL PLANNING COMMISSION

Logout Explore Edit Plan

Add:  Note  Sidewalk  Crosswalk  Ramp Cancel My Edits All Edits

Search the map

Ramp Attributes

Editing Ramps

Remove?

Status

Detectable Warning Surface



Ramp Position

Enter note for edits (optional)

SAVE EDITS

# walk.dvrpc.org > Plan

GREATER PHILADELPHIA PEDESTRIANportal | DELAWARE VALLEY dvrpc REGIONAL PLANNING COMMISSION

Logout   [Explore](#) [Edit](#) [Plan](#)

[Create Project](#) [My Projects](#) [All Projects](#)

Search the map

## < Intersection

Edit your project or draw features on the map.

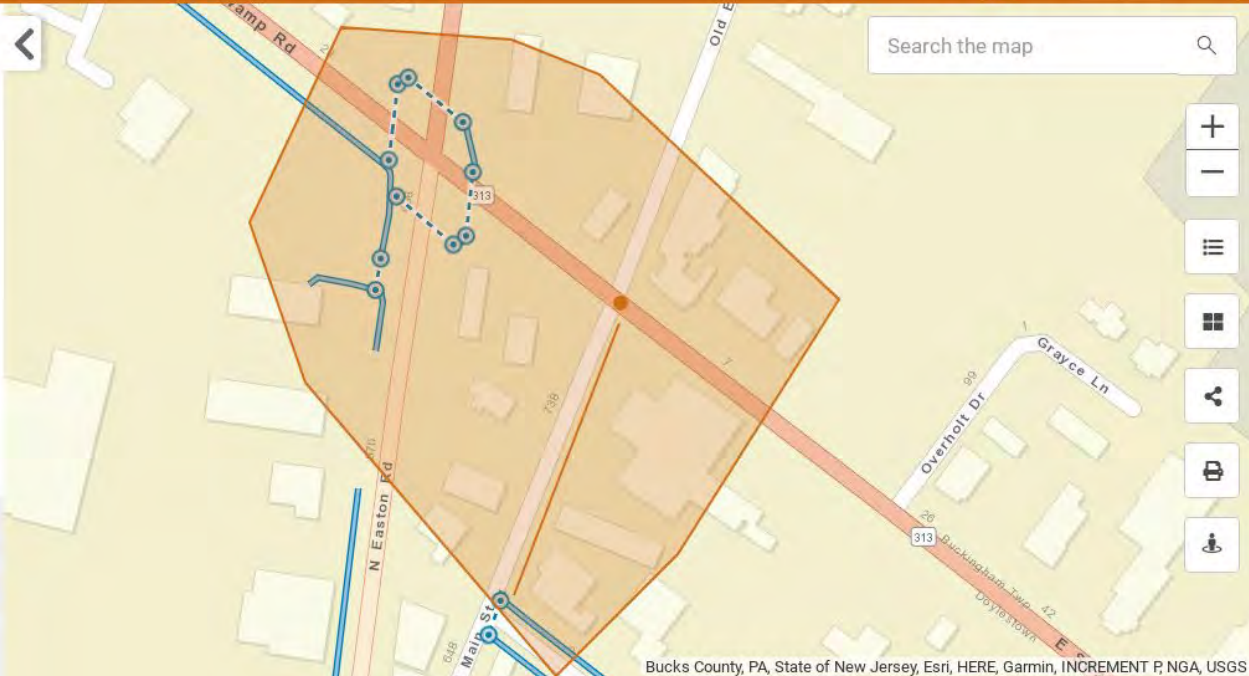
Project Name

Sharing

Type

[UPDATE PROJECT](#)

[3 FEATURES](#)



Bucks County, PA, State of New Jersey, Esri, HERE, Garmin, INCREMENT P, NGA, USGS



# Our Partners

**Sidewalk Inventory**  
Century Engineering  
with Sabra Wang and KMJ



**Pedestrian Portal**  
Tierra Plan  
with MIG

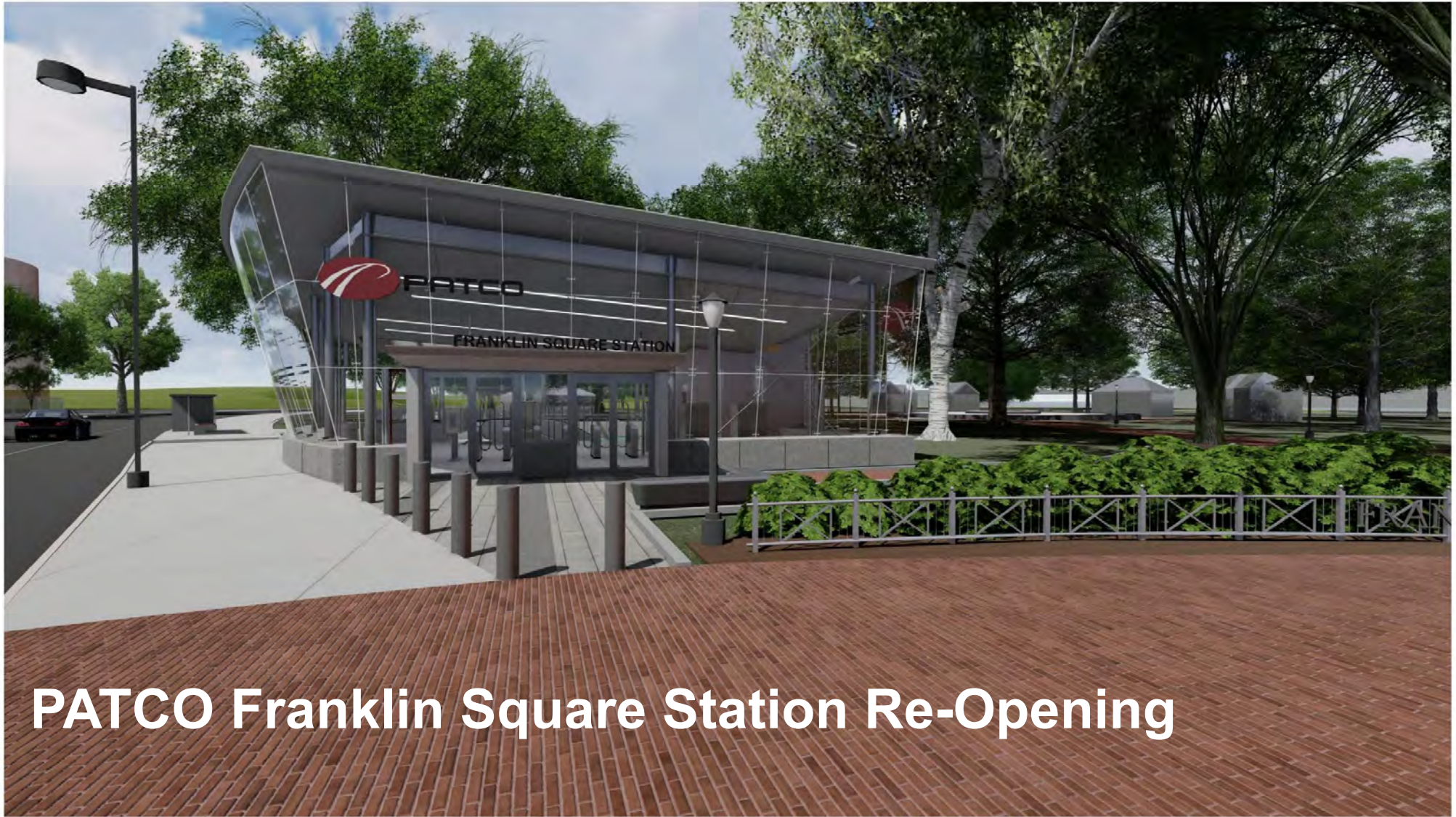


# Questions?

**Kim Korejko**

**email | [kkorejko@dvrpc.org](mailto:kkorejko@dvrpc.org)**

**[walk.dvrpc.org](http://walk.dvrpc.org)**



# PATCO Franklin Square Station Re-Opening

October 6, 2020





FRANKLIN SQUARE STATION RE-OPENING

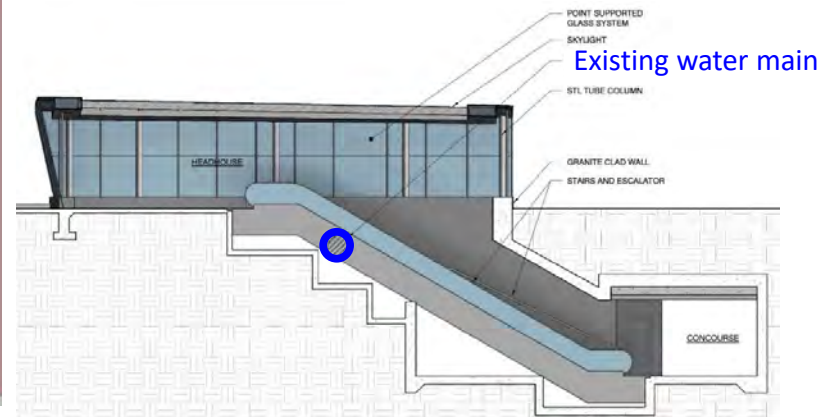


# Franklin Square Park



## Legend

-  Existing routing (abandoned in-place)
-  Proposed re-route





Original Headhouse



Current Condition



Proposed Headhouse



FRANKLIN SQUARE STATION RE-OPENING





FRANKLIN SQUARE STATION RE-OPENING













EXISTING CONCOURSE LOOKING SOUTH



EXISTING CONCOURSE TILING



INTERIOR PERSPECTIVE OF CONCOURSE LEVEL

# SAFE ROUTES *to* TRANSIT

**Bordentown Station**

October, 2020



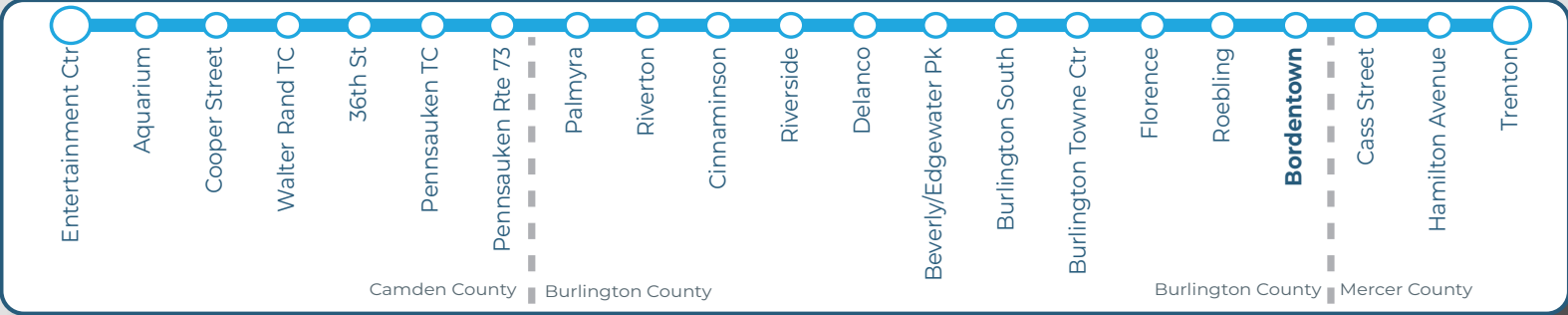
Art by Rick Petit



River LINE

2015 A

MTRANSIT



Source: DVRPC (2019), NJ Transit

# Study Area

## *Intersections*

1. Park & Prince
2. Park & Farnsworth
3. Crosswicks & Farnsworth
4. Burlington & Farnsworth
5. Burlington & Prince

## *Corridors*

6. Park Street
7. Prince Street



# Existing Conditions



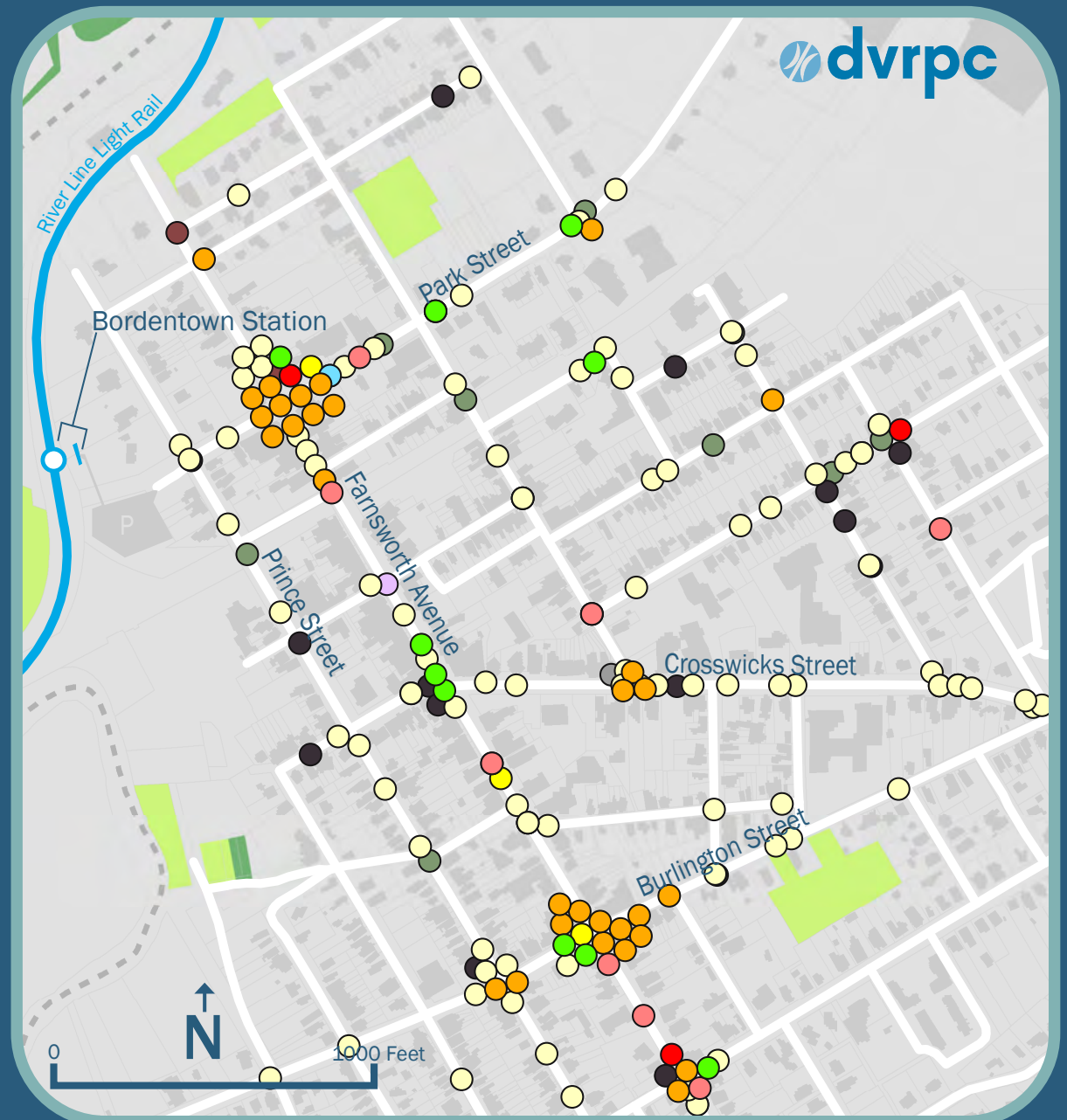




# Crash Data

## 2010-2016 Crashes- NJDOT

- Pedestrian
- Cyclist
- Same Direction Rear
- Same Direction Side
- Right Angle
- Opposite Direction (Head on)
- Opposite Direction Side Swipe
- Struck Parked Vehicle
- Left U Turn
- Backing
- Encroachment
- Fixed Object



# Sidewalks

- Gaps in sidewalks most prevalent outside of “downtown” or in places with large driveways



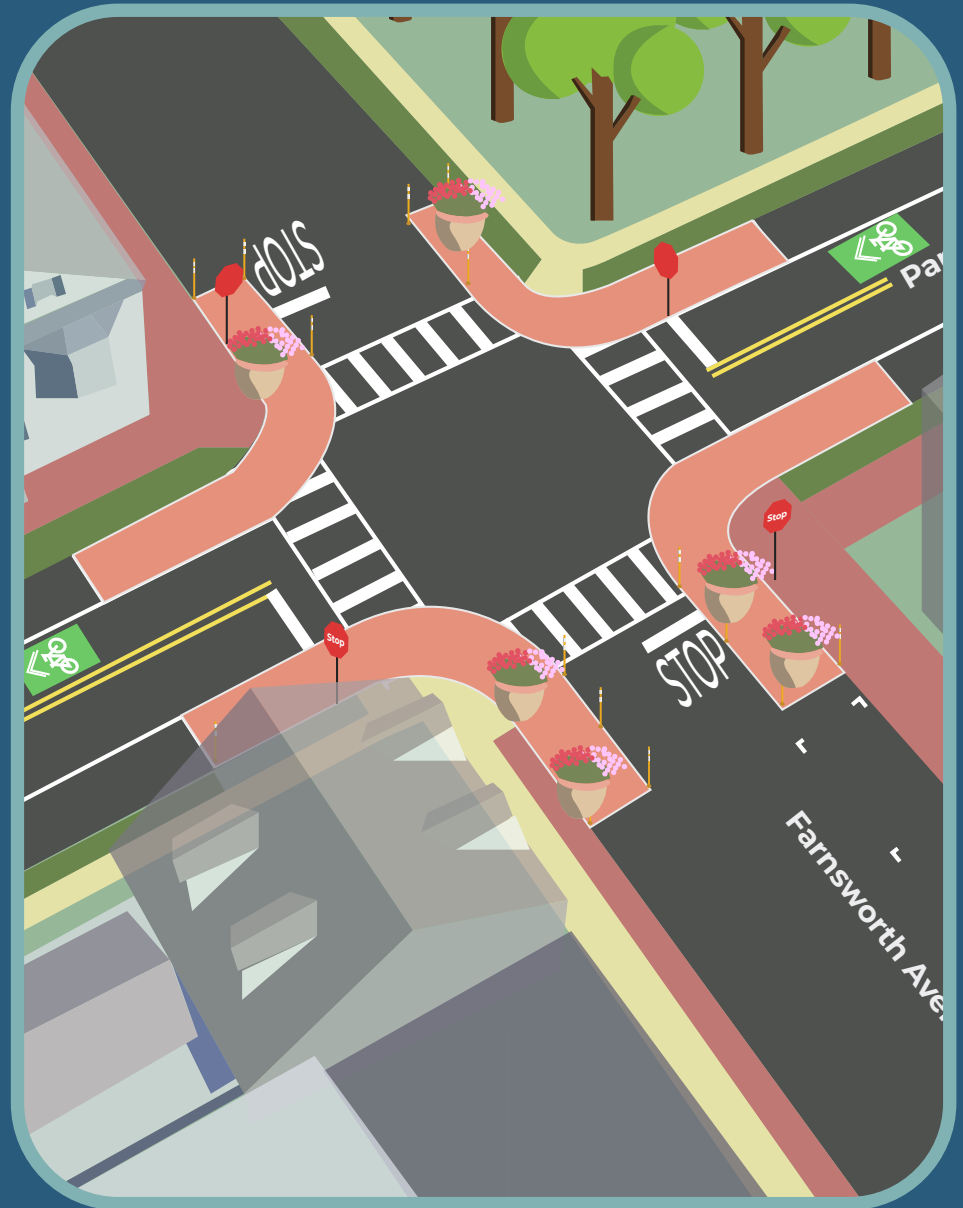
# Lighting Analysis

- Used Google Streetview to plot lights, applied 10' radius
- Station gaps are highest priority

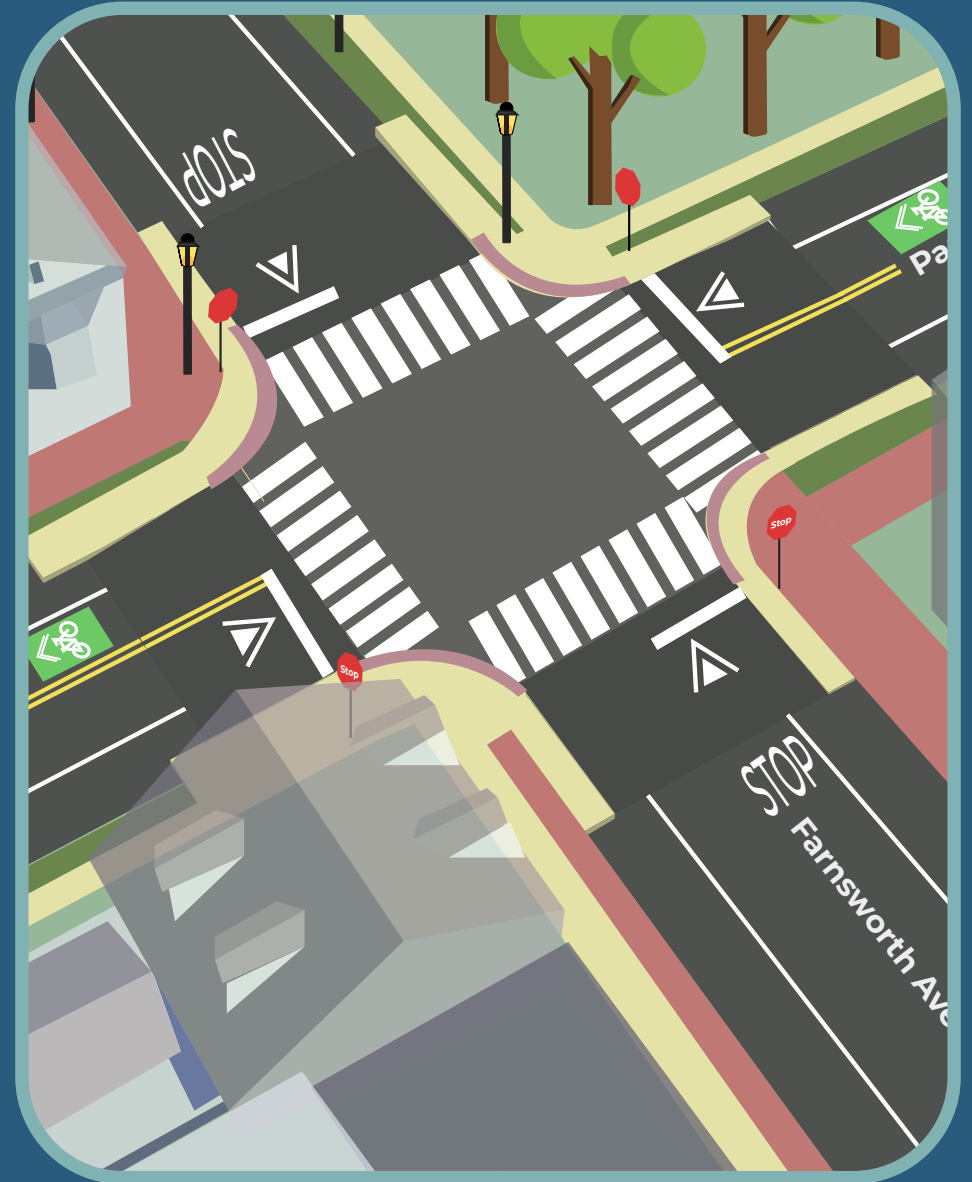
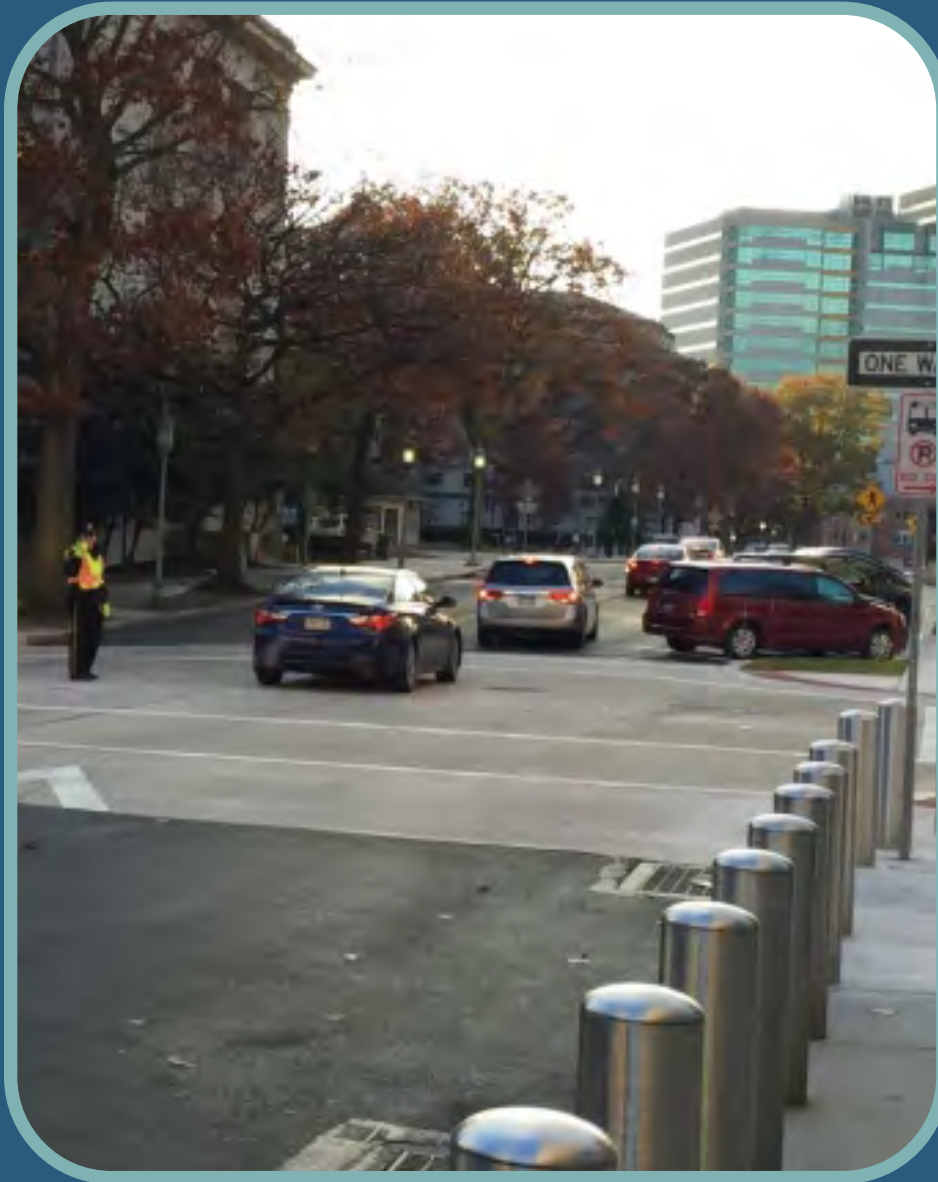


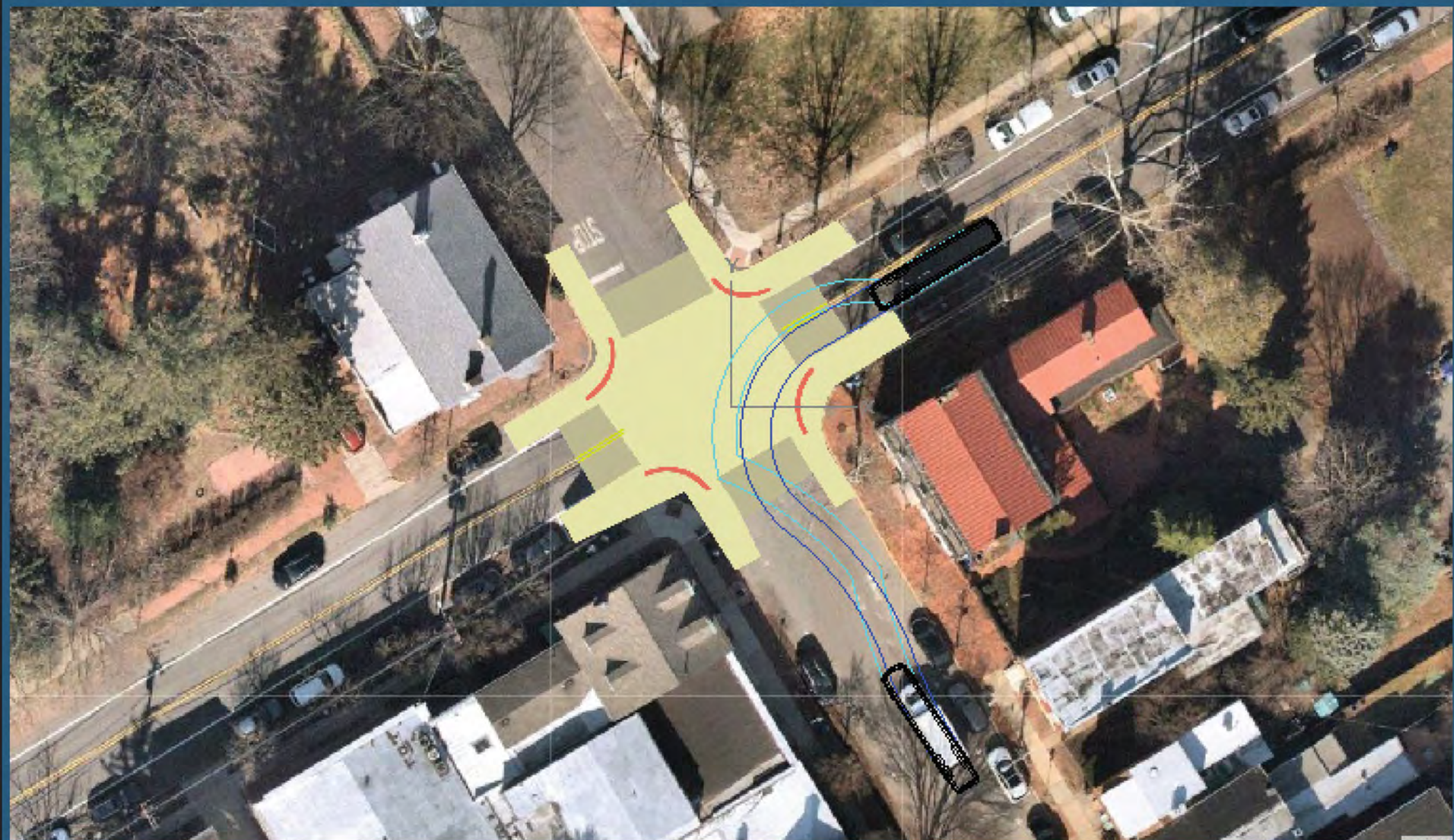
Street light with 10' radius

# Park & Farnsworth: Recommendations



# Park & Farnsworth: Recommendations

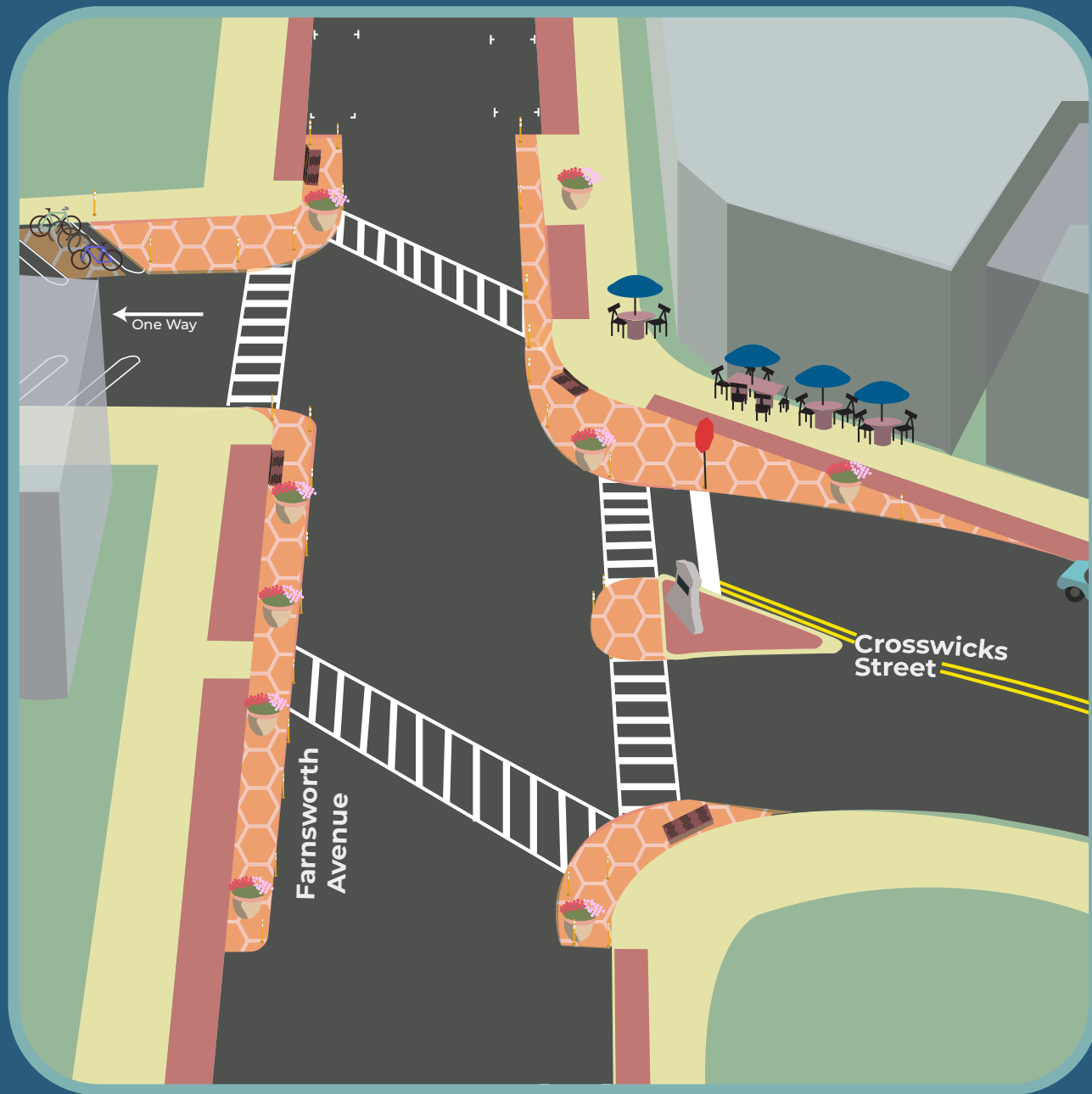




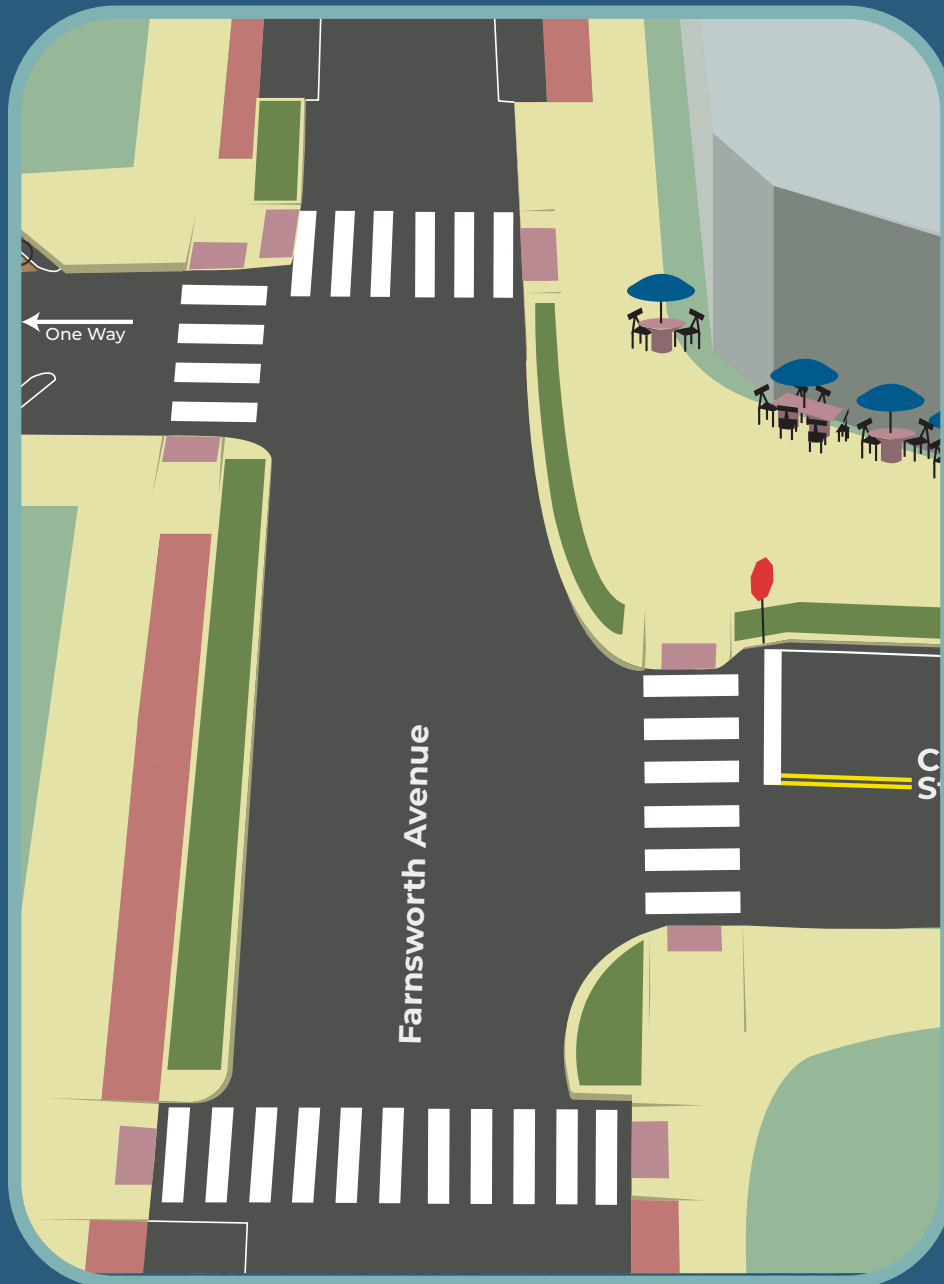




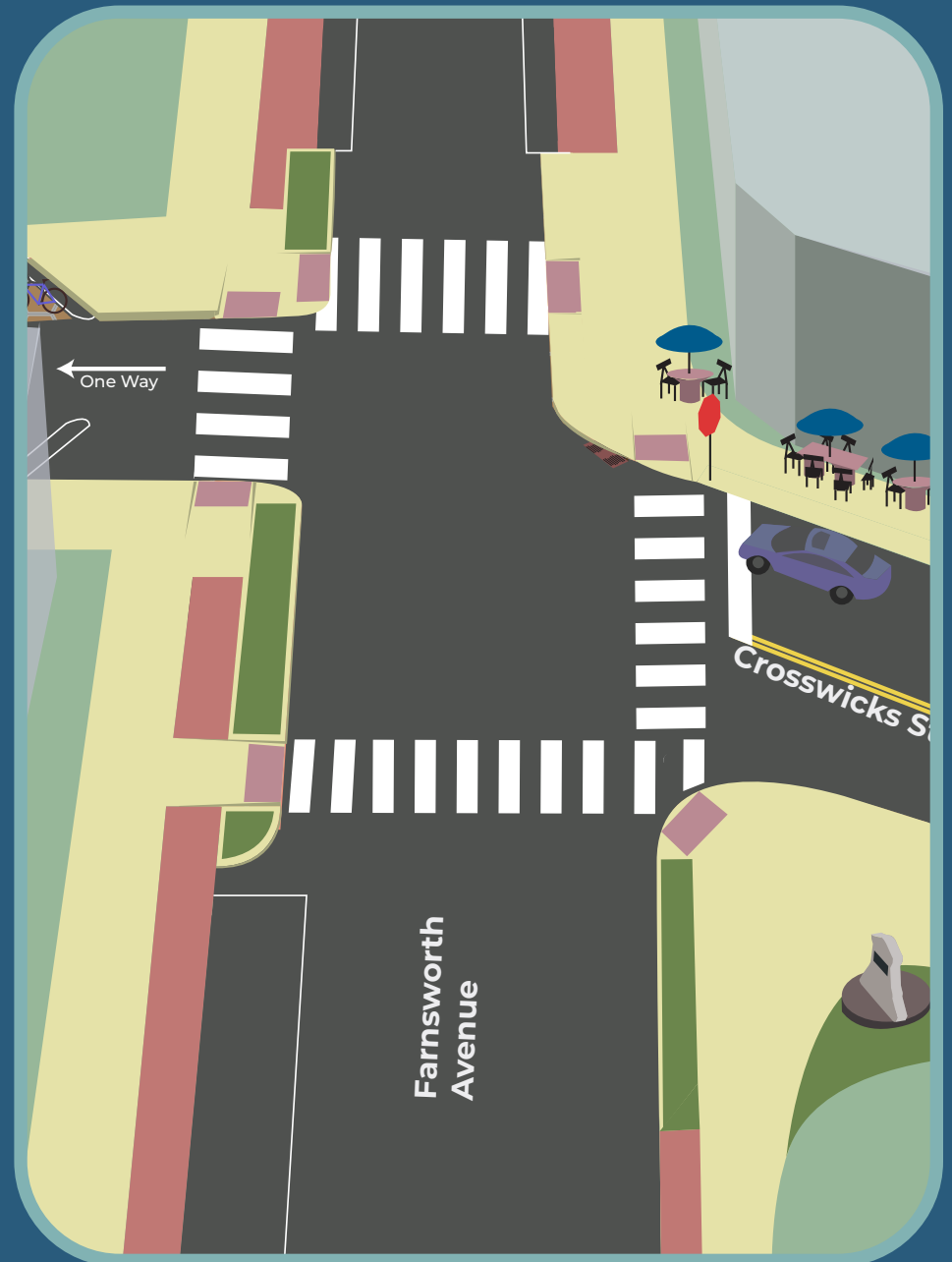
# Farnsworth & Crosswicks: Recommendations



# Option 1



# Option 2





# Next Steps and Implementation Progress





# IDRuM Presentation

## October 6, 2020 RTC



Katie Nash | [knash@dvrpc.org](mailto:knash@dvrpc.org)  
Transportation Planner  
Office of Capital Programs and Transportation Operations  
Management

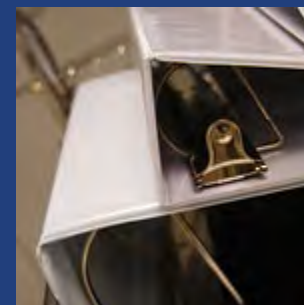
# What are the Detour Route Maps?

- PennDOT District 6-0 Detour Routes
- All detour routes have been vetted by PennDOT and all necessary agencies
- Detour routes are truck/heavy vehicle approved
- Provide Planners, Consultants, and First Responders access to detour routes to be used during construction, special event planning, major incidents, etc.
- All detour routes provide Potential Control Points



# B.ID. – “Before IDRuM”

- Paper maps stored in binders
- Hard to keep track of who or what agency had a copy
- Difficult to distribute updates
- Not easily accessible by consultants



# IDRuM 1.0/2.0

**I Interactive Detour Route Mapping**

Home Application Download Tutorial Links Logout On-Line Ver 2.1 - GUEST

**I IDRuM**  
Interactive Detour Route Mapping  
SELECT AN AREA

- NJDOT North
- NJDOT South
- PennDot District 8-0

Incident Location:  
Chemical Road  
to  
Ridge Pike

476

- Potential Control Point
- Incident Location
- Primary Detour Route
- Secondary Detour Route

**DRIVING DIRECTIONS**

**Northbound:**

- Exit I - 476 at Exit # 18A (Ridge Pike),
- Turn left onto Chemical Road,
- Turn left onto Germantown Pike to I - 276 or I - 476 (Northeast Extension).

**Southbound:**

- Exit I - 476 at Exit #18B to Germantown Road East,
- Turn right onto Chemical Road,
- Turn right onto Ridge Pike to I - 476.

**ADDITIONAL INFORMATION**

PennDOT  
Montgomery County Maintenance Man: (610) 275-2356  
Traffic Management Center Man: (610) 268-6934

PA State Police - Berks Station: (717) 590-6200  
Northtown Dispatch Center: (484) 250-7000  
PA Turnpike (Highways): (610) 523-6568  
Plymouth Township Police: (610) 279-1900

- DVRPC's Internet Flash Application
- Provides Access to Official PennDOT and NJDOT Detour Routes
- Interactive Browser-based Application
- 5 PA Counties
- 10 NJ Counties





# IDRuM Reboot

- Why did it come about?
  - Adobe Flash Player no longer supported
  - Existing application not user friendly
- What needed to be done to move to new format?
  - Data cleaning and creation
  - Mapping changes
  - Manual and digital coordinate inputs
  - Publish data to AGOL



# IDRuM Reboot

- Features
  - Navigable by County, Route, or Segment
  - Zoom In to view segments and incident locations, Zoom Out to view region
  - Clicking on a segment will provide a new tab with the PDF for the detour route
  - Adaptable



# Live Demo



# New Jersey Detour Routes

- NJDOT collaborating with NJIT for a Statewide Detour Route System
- IDRuM will have a temporary application for the DVRPC's existing NJ Detour Routes





Thank You!