



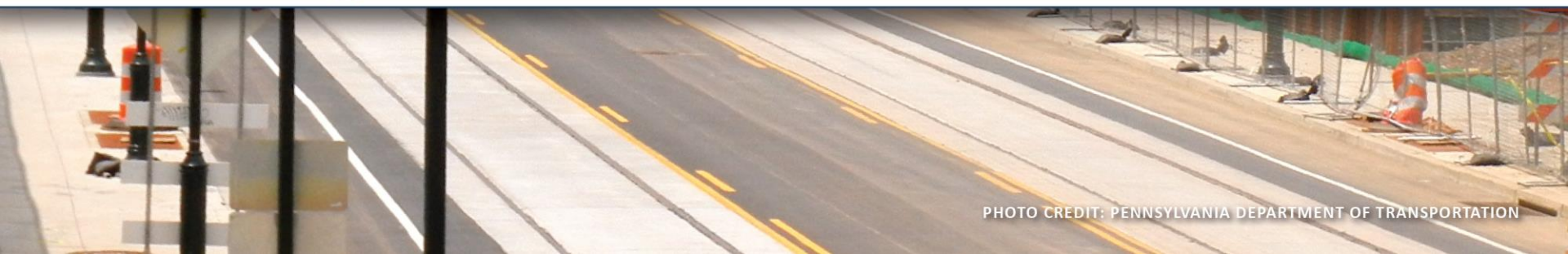
TIP Actions

Transportation Improvement Program

New Jersey TIP (FY2016-2019)

Pennsylvania TIP (FY2017-2020)

October 2017



Waverly Road over Tacony Creek (CB #275)

Montgomery County | Add New Project to TIP

- ▶ **Action Type:** TIP Amendment
- ▶ **Action:** Amend the TIP by adding a new \$2 million sSTP funded bridge project and program accordingly:
 - FY18 PE (\$350,000)
 - FY19 FD (\$300,000)
 - FY20 UTL (\$25,000) and ROW (\$25,000)
 - FY21 CON (\$1.3 million)



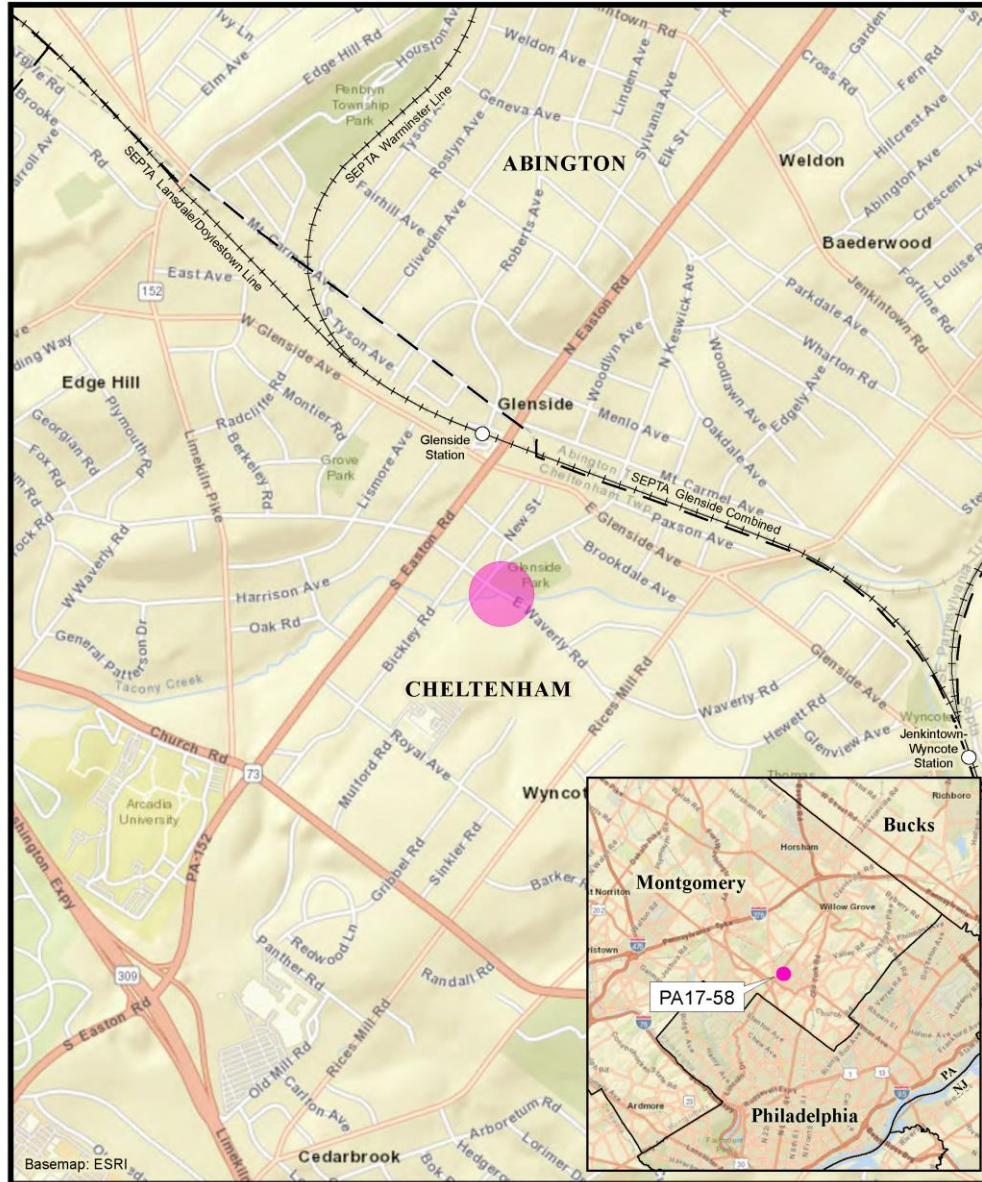
Waverly Road over Tacony Creek (CB #275)

Montgomery County | Add New Project to TIP

- ▶ **Reason:** Additional funds to region made available by PennDOT to counties that implemented new \$5 vehicle registration fee via Act 89.
 - ▶ \$2 Million reserved for each county that passed resolution, with 50% local match required.
- ▶ Local match provided by bridge structures advanced with \$5 Registration Fee Revenue
 - ▶ Camp Wawa Road over East Branch of the Perkiomen Creek (CB #150)



PA17-58: Waverly Road over Tacony Creek (County Bridge #275)



TIP Action | Proposed – PA

Amend the PA TIP for the Following Project:

a. Waverly Road over Tacony Creek (CB #275), Montgomery County

That the RTC Recommend that the Board approve amending the TIP by adding a new \$2 Million sSTP funded bridge project and program accordingly:

- FY18 PE (\$350,000)
- FY19 FD (\$300,000)
- FY20 UTL (\$25,000) and ROW (\$25,000)
- FY21 CON (\$1.3 million)

These are additional funds to the region



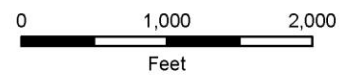
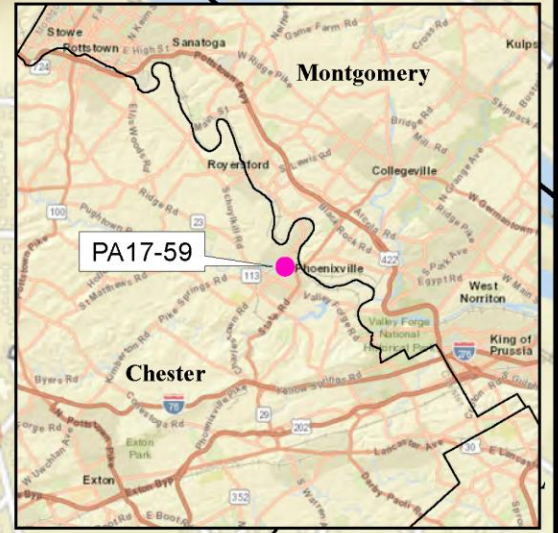
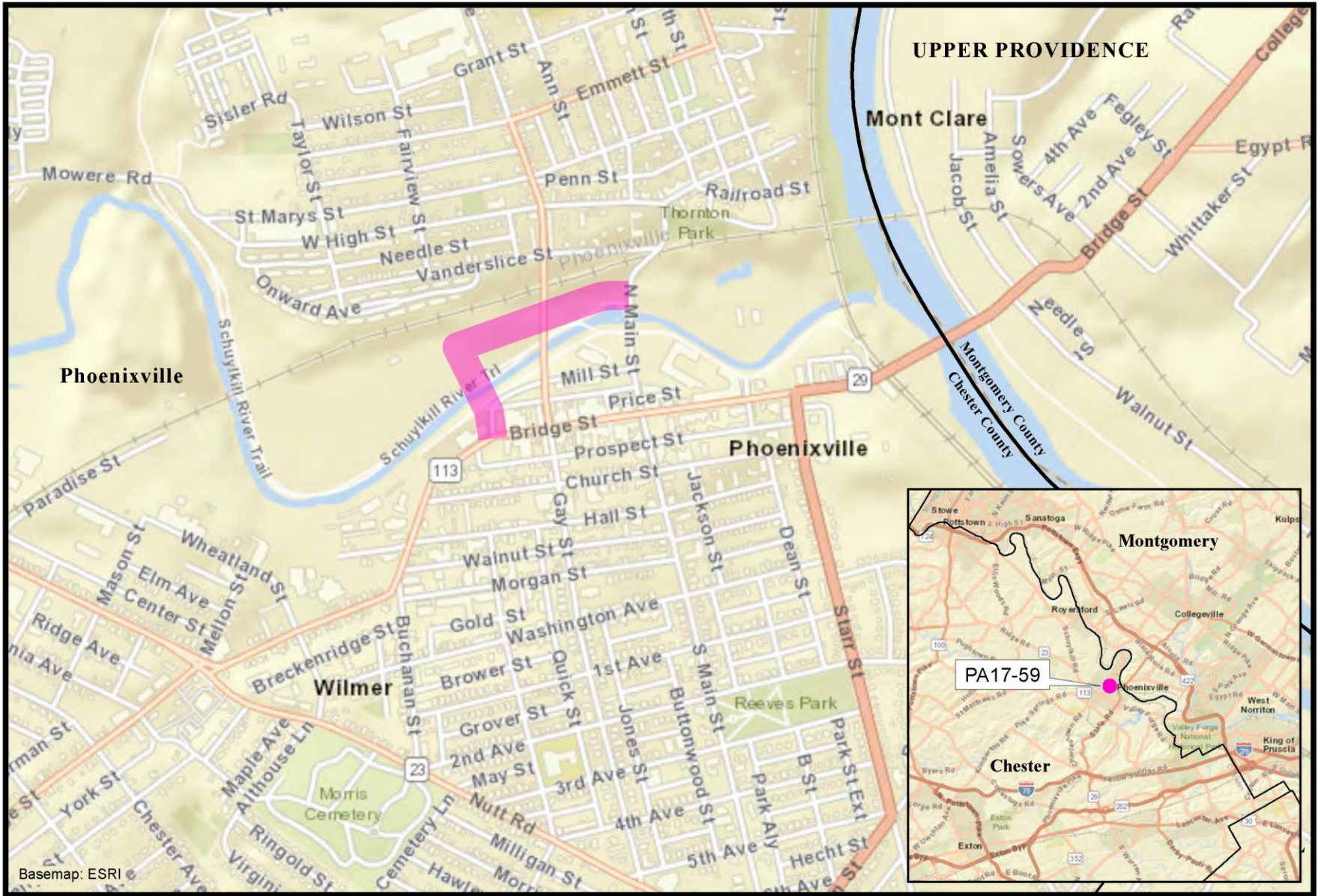
French Creek Parkway – Phase 1

Chester County | Remove Project from TIP

- ▶ **Action Type:** TIP Amendment
- ▶ **Action:** Amend the TIP by removing project from the TIP
- ▶ **Reason:** FHWA approved a “No Build Alternative” after completing PE



PA17-59: French Creek Parkway - Phase 1



Basemap: ESRI

TIP Action | Proposed – PA

Amend the PA TIP for the Following Project:

a. French Creek Parkway – Phase 1, Chester County

That the RTC Recommend that the Board approve amending the TIP by removing the French Creek Parkway – Phase 1 project from the TIP.

- FY17 FD (\$325,000 SXF/Toll Credit match)
- FY18 UTL (\$25,000 SXF/Toll Credit match)
- FY19 CON (\$2,817,000 SXF/Toll Credit match)

*SXF is fund code for earmarks





Transportation
Improvement
Program

TIP

Thank You!

www.dvrpc.org/TIP



Transportation Conformity Demonstration: *Connections 2045* LRP, FY 2017 PA TIP, and FY 2018 NJ TIP

Regional Technical Meeting

October 10, 2017

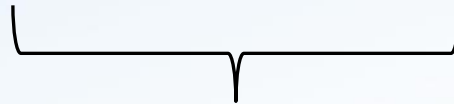
Presentation

- ❖ Conformity Overview
- ❖ DVRPC Region
- ❖ Emissions Analysis Results
- ❖ Air Quality Trends

Conformity Overview

There are three major sources of emissions

- ❖ Stationary – power plants, industrial boilers, etc.
- ❖ Industry – petroleum refineries, cement kilns, etc.
- ❖ Mobile Sources
 - Off-road – trains, planes, construction equipment
 - On-Road Mobile Sources – cars, trucks, buses
 - Accounts for 38% NO_x, 14% VOC, 3% PM_{2.5}



Combine to form Ozone

Source: FHWA Transportation Air Quality Selected Facts and Figures

Conformity Overview

Transportation Conformity is a federal requirement to control emissions of on-road, mobile sources in designated air quality Non-attainment or Maintenance Areas



Who Must Demonstrate Conformity?

Non-Attainment Areas

- ❖ Region not meeting federal air quality standards (NAAQS)

Maintenance Area

- ❖ Area that previously was in non-attainment

State Implementation Plans (SIPs)

- ❖ States must develop plans (SIPs) to meet or continue to maintain the NAAQS

Conformity Overview

Conformity Triggers

- ❖ Amendments to the FY 2017 TIP for PA
- ❖ A new FY 2018 TIP for NJ
- ❖ A New *Connections 2045 LRP*

DVRPC Region

Multiple Non-attainment and Maintenance Areas in Multiple Jurisdictions

❖ Non-Attainment

➤ Ozone

— Entire region in one NAA.

➤ PM_{2.5}

— Annual Std.

— Delaware County is stand-alone NAA

❖ Maintenance Areas

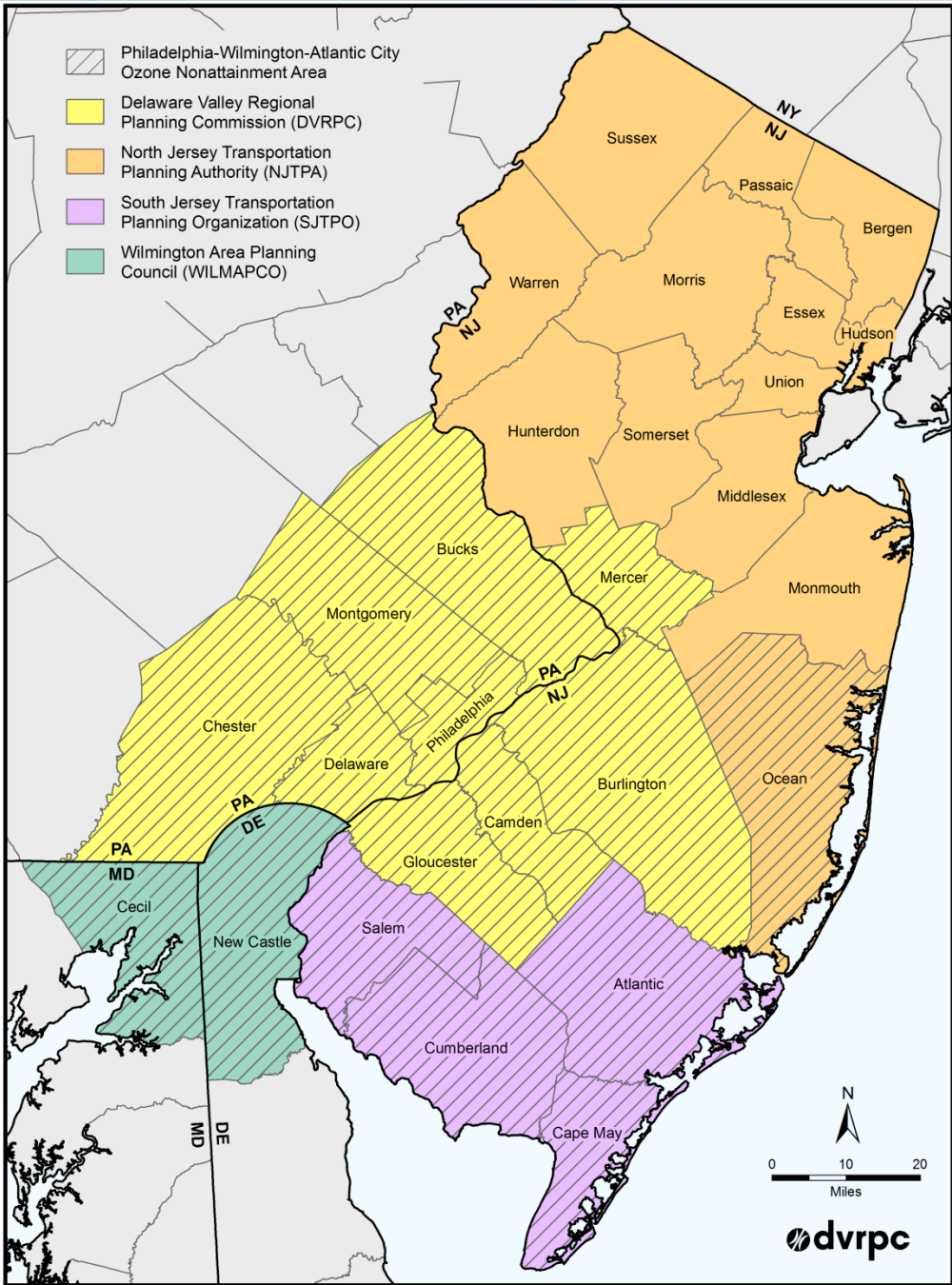
➤ PM_{2.5}

— Annual and 24-Hour Stds

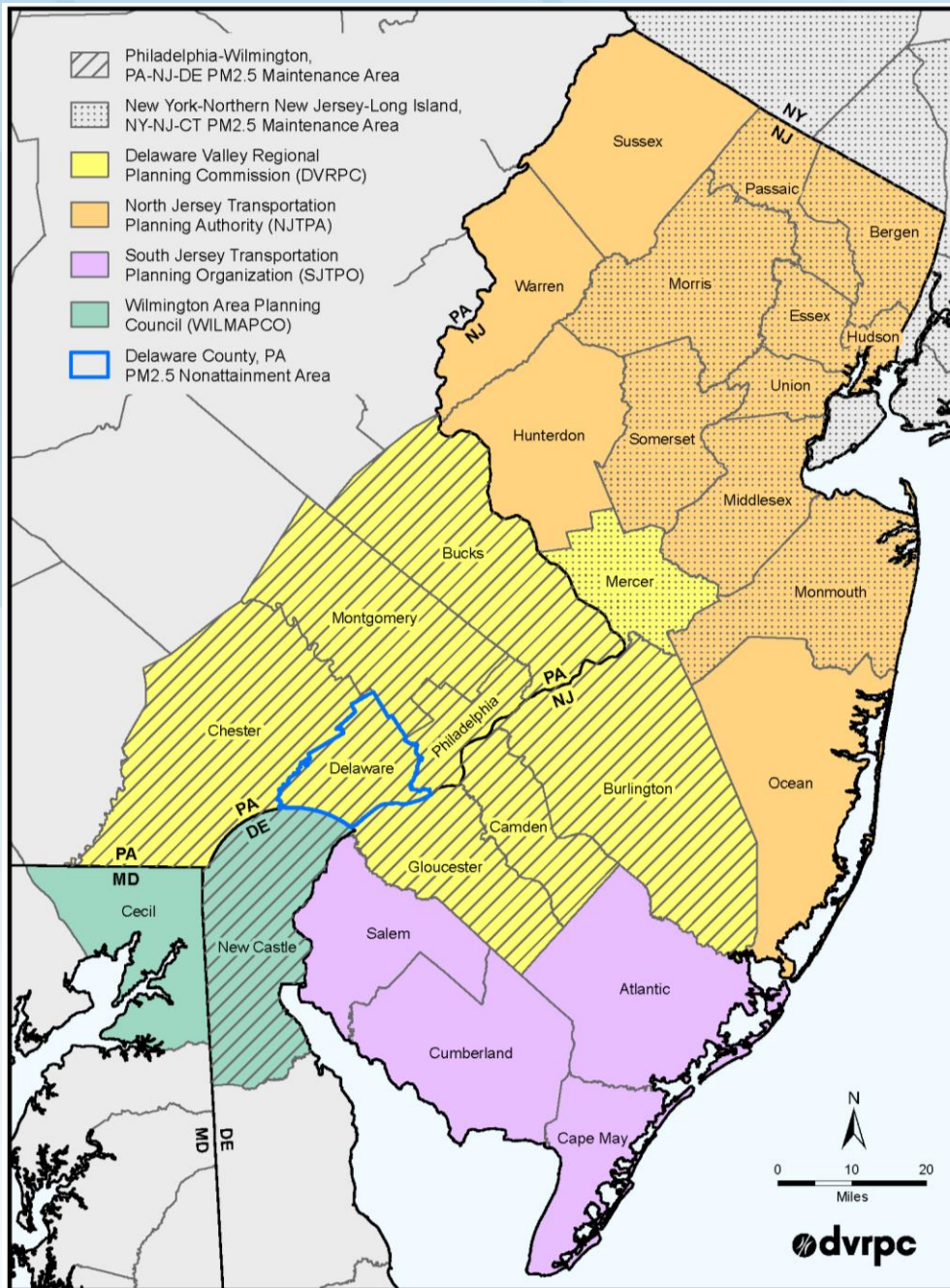
— Region is in two different Maintenance Areas

• Philadelphia – Wilmington (8 DVRPC Counties + NCC, DE)

• New York – Northern NJ – Long Island (Mercer County)



Ozone Non-Attainment Area



PM_{2.5} Maintenance Areas

Delaware County Update

Data shows Delaware County is meeting PM_{2.5} Standard

- ❖ EPA has approved “Clean Data Determination”

Next step to Attainment

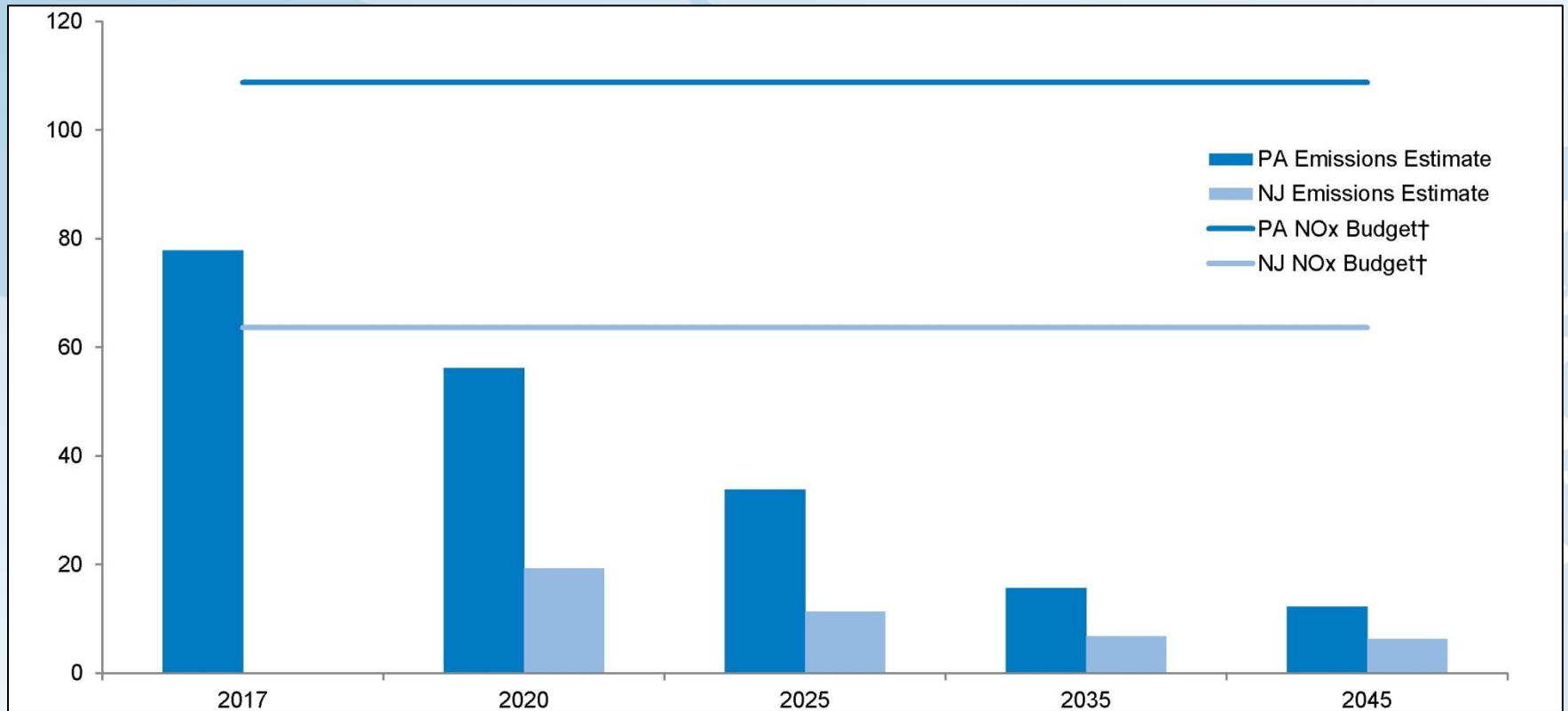
- ❖ PA DEP must submit re-designation request
 - expected Spring 2018
- ❖ To be reviewed and approved by EPA
 - Could take >1 year to finalize

Conformity Test

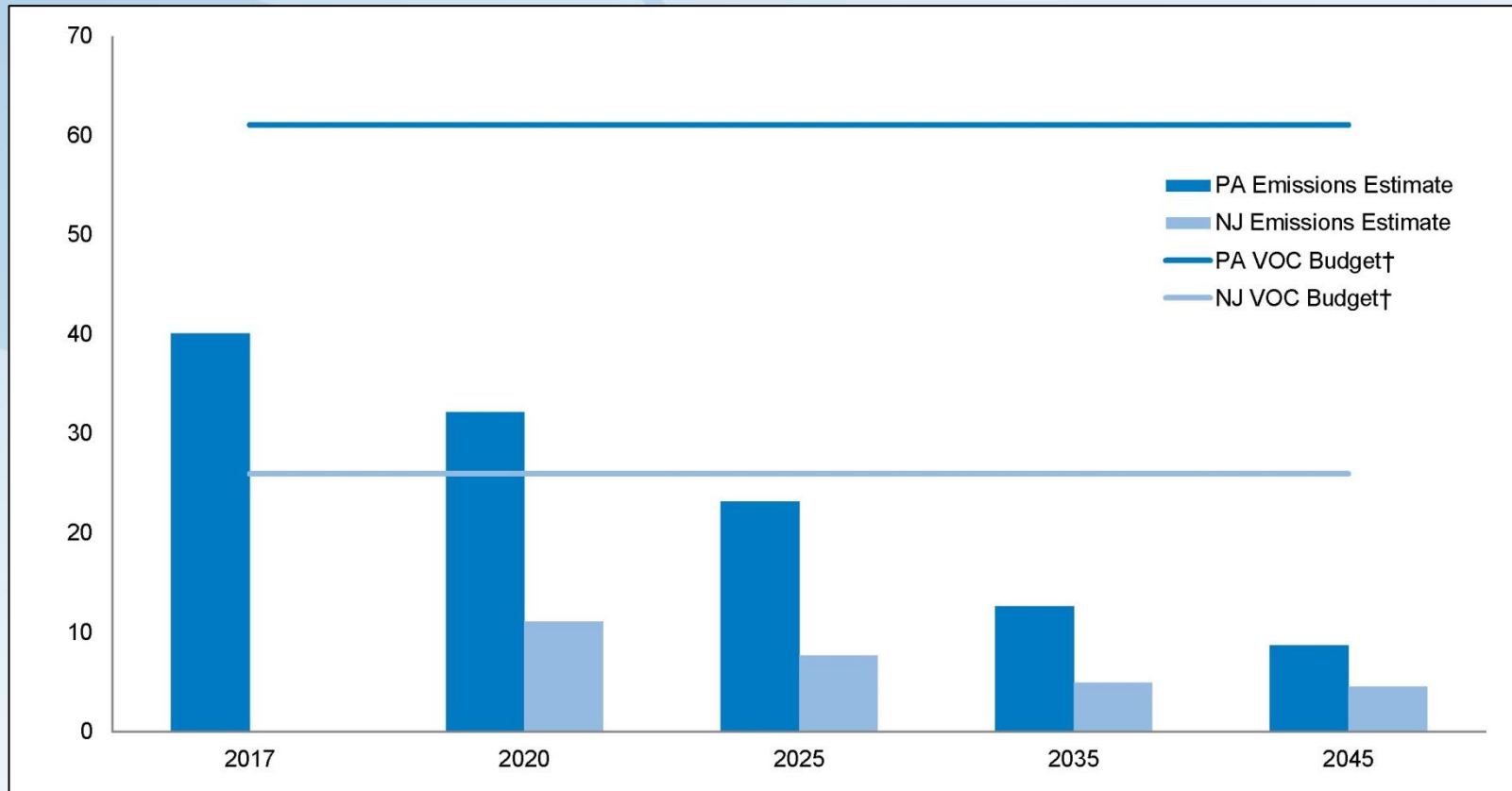
Conformity is tested against SIP “Budgets”

- ❖ A budget is an emissions ceiling established in the SIP
- ❖ Projected emissions from projects in the TIP and Plan are compared to SIP budgets
- ❖ If projected emissions are less than budget, the TIP or Plan is conforming to the SIP

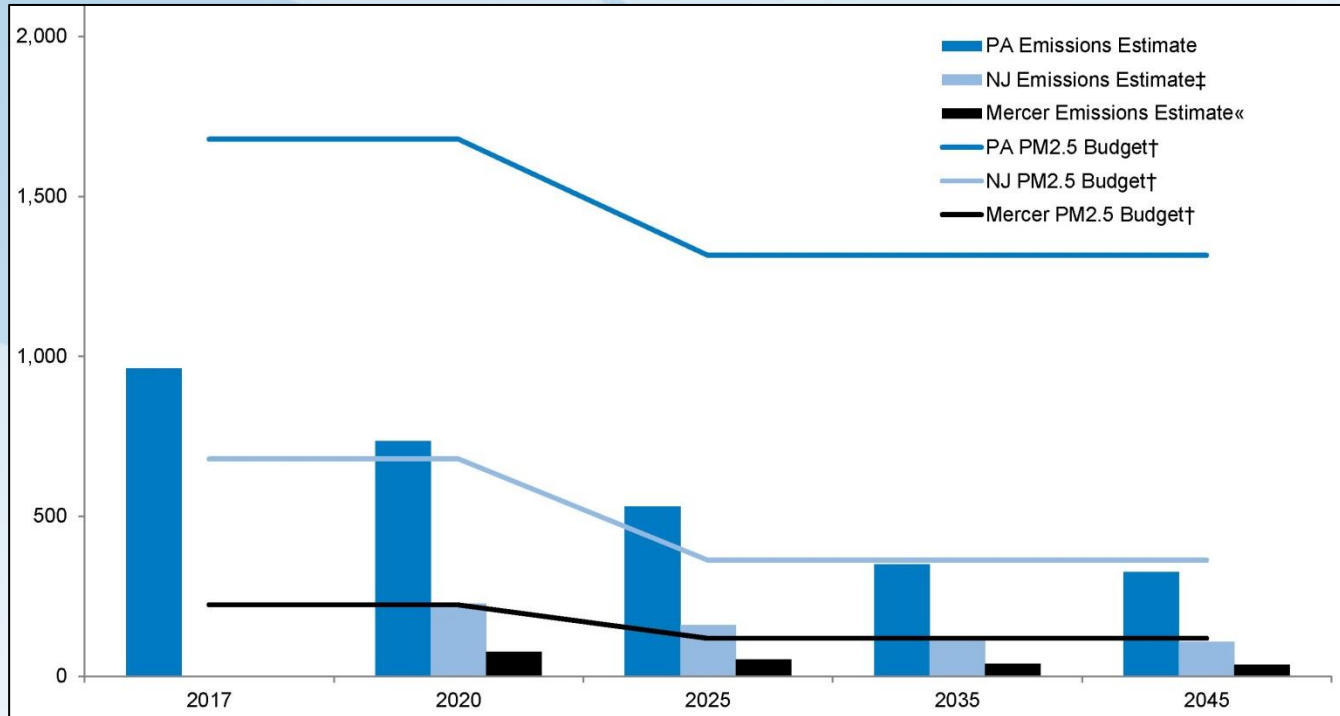
NO_x Emissions Results



VOC Emissions Results



PM_{2.5} Emissions Results



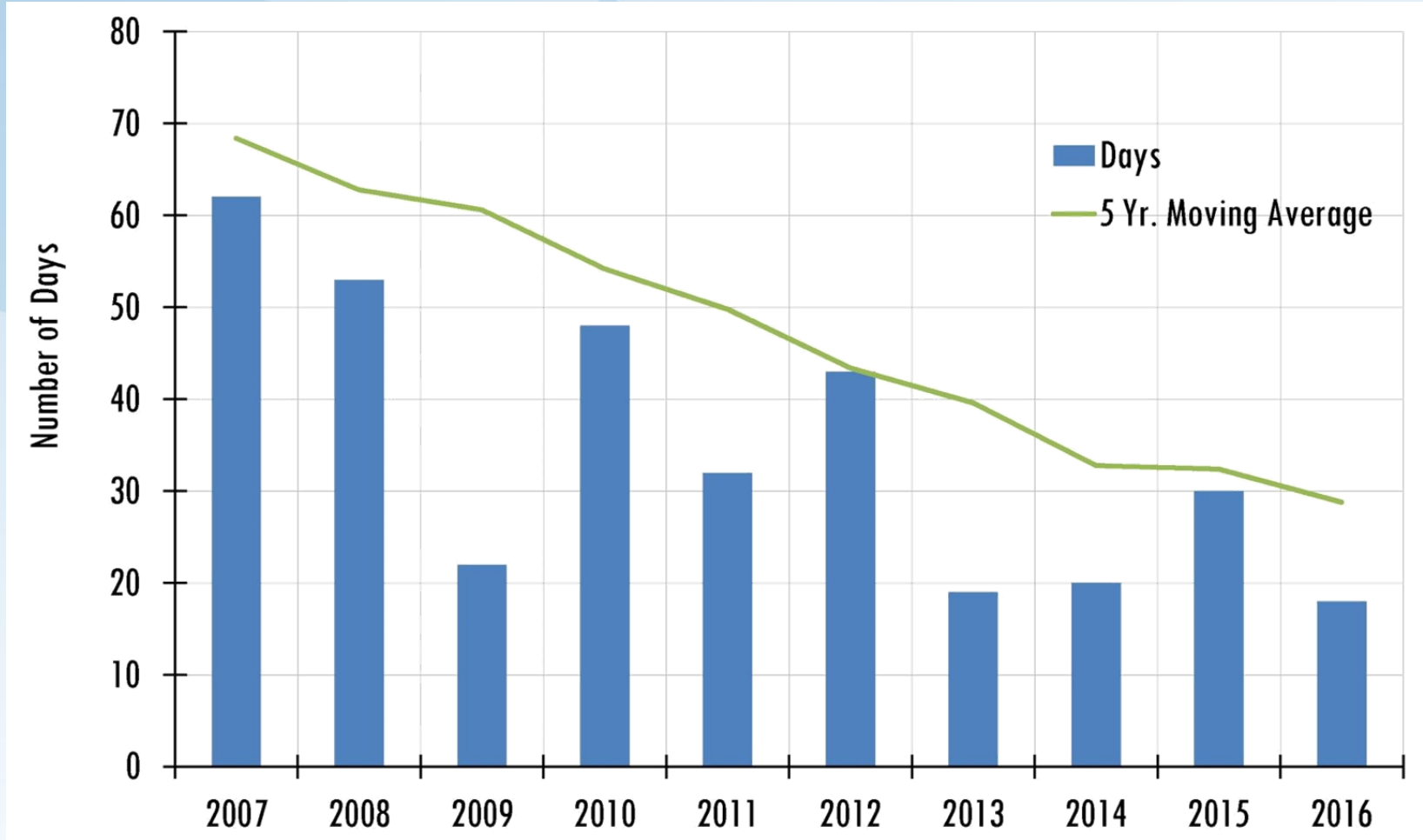
When Will it End?

The Region has been in Maintenance of the CO standards for 20 years

- ❖ Hasn't been required to perform emissions test since 2008
- ❖ Hasn't had any new violations of the CO std.
- ❖ Still required to mention CO in Conformity documents until next year
- ❖ Following this schedule....



Regional Air Quality Trends



Emissions Analysis Results

FY 2017 PA TIP, FY 2018 NJ TIP, and the *Connections 2045* LRP

- ❖ “Conform” to the corresponding SIPs and the current final conformity guidance under CAA including all applicable NAAQS requirements
- ❖ Transportation investments identified in the TIPs and the Plan do not impede efforts to attain NAAQS

Conformity Results

- ❖ Meet the 8-hour ozone, daily, and annual PM_{2.5} SIP requirements
- ❖ Replaces the existing conformity finding of July 2016

Public Comment

Public Comment Period

- ❖ September 1 through October 4, 2017
- ❖ Two public meetings
 - ❖ September 18, 2017 – Collingswood, New Jersey
 - ❖ September 19, 2017 – Philadelphia, Pennsylvania

Comments were accepted:

- ❖ At Public Meeting
- ❖ Online
- ❖ Via mail and fax

One public comment submitted on the Conformity Determination

Requested Action

That the RTC recommend that the DVRPC Board adopt the conformity findings of *Connections 2045* LRP, FY 2017 TIP for Pennsylvania, and FY 2018 TIP for New Jersey for Ozone, PM_{2.5}, and CO in the DVRPC planning area.

An aerial photograph of a city skyline, featuring several prominent skyscrapers. The most notable is a tall, blue-glass building with a distinctive, stepped, Art Deco-style top. To its right is another tall, white building with a similar stepped top. In the foreground, there are several shorter, multi-story buildings with a grid-like facade. The sky is clear and blue.

Questions

Sean Greene
Manager, Air Quality Programs
sgreene@dvrpc.org

REGIONAL TECHNICAL COMMITTEE

OCTOBER 10, 2017

CONNECTIONS

2045

PLAN FOR GREATER PHILADELPHIA



Agenda

- Overview of *Connections 2045*
- What Has Changed
- Public Comments
- Action

Public & Stakeholder Outreach



+ Long-Range Financial Plan Subcommittee

+ Public Comment Period & Meetings

+ Regional Meetings, Conferences, Events, and Workshops

The Connections 2045 Vision

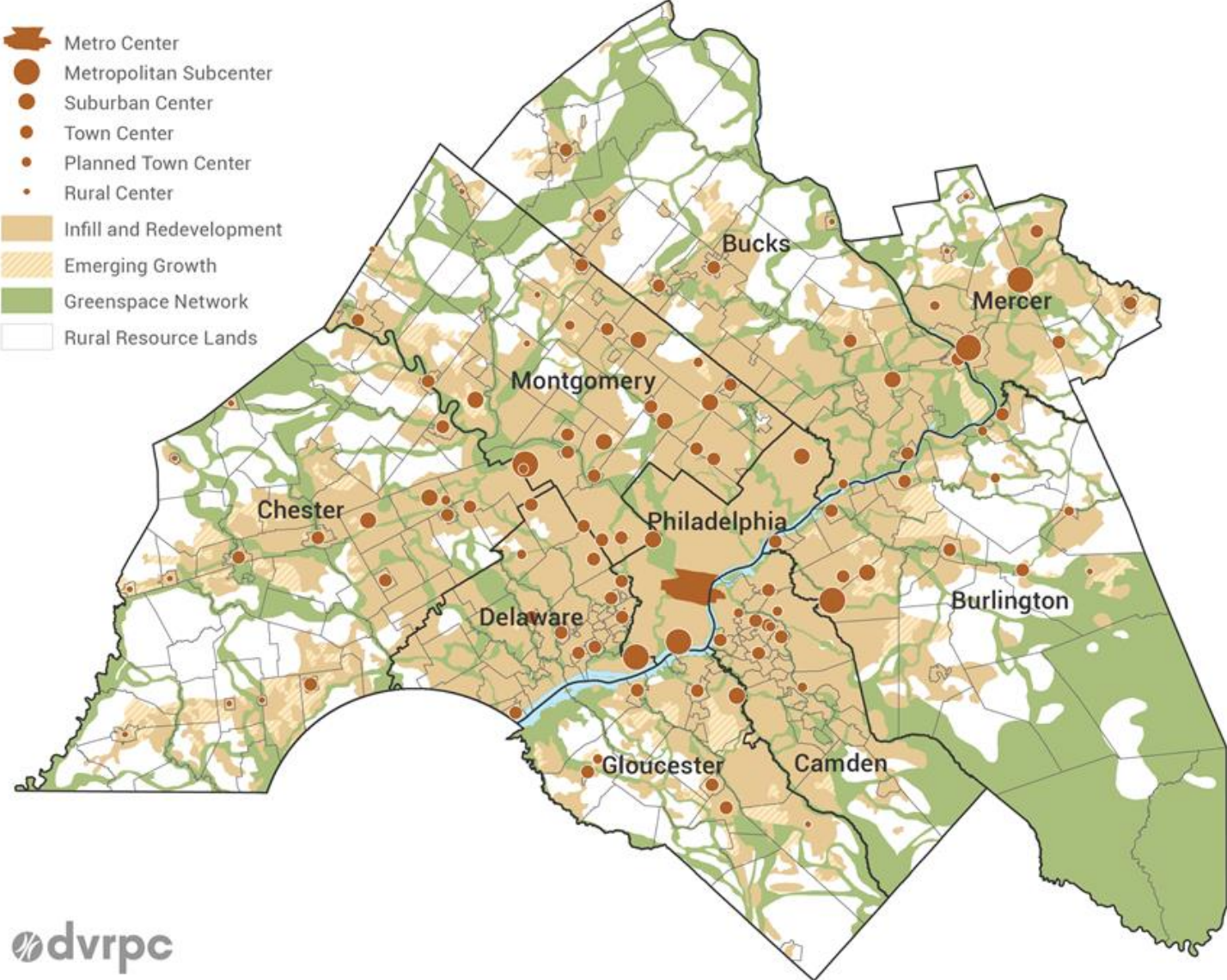
Over the Next 30 Years, Greater Philadelphia will:

- **Sustain the Environment**
- **Develop Livable Communities**
- **Expand the Economy**
- **Advance Equity and Foster Diversity**
- **Build an Integrated, Multimodal Transportation Network**

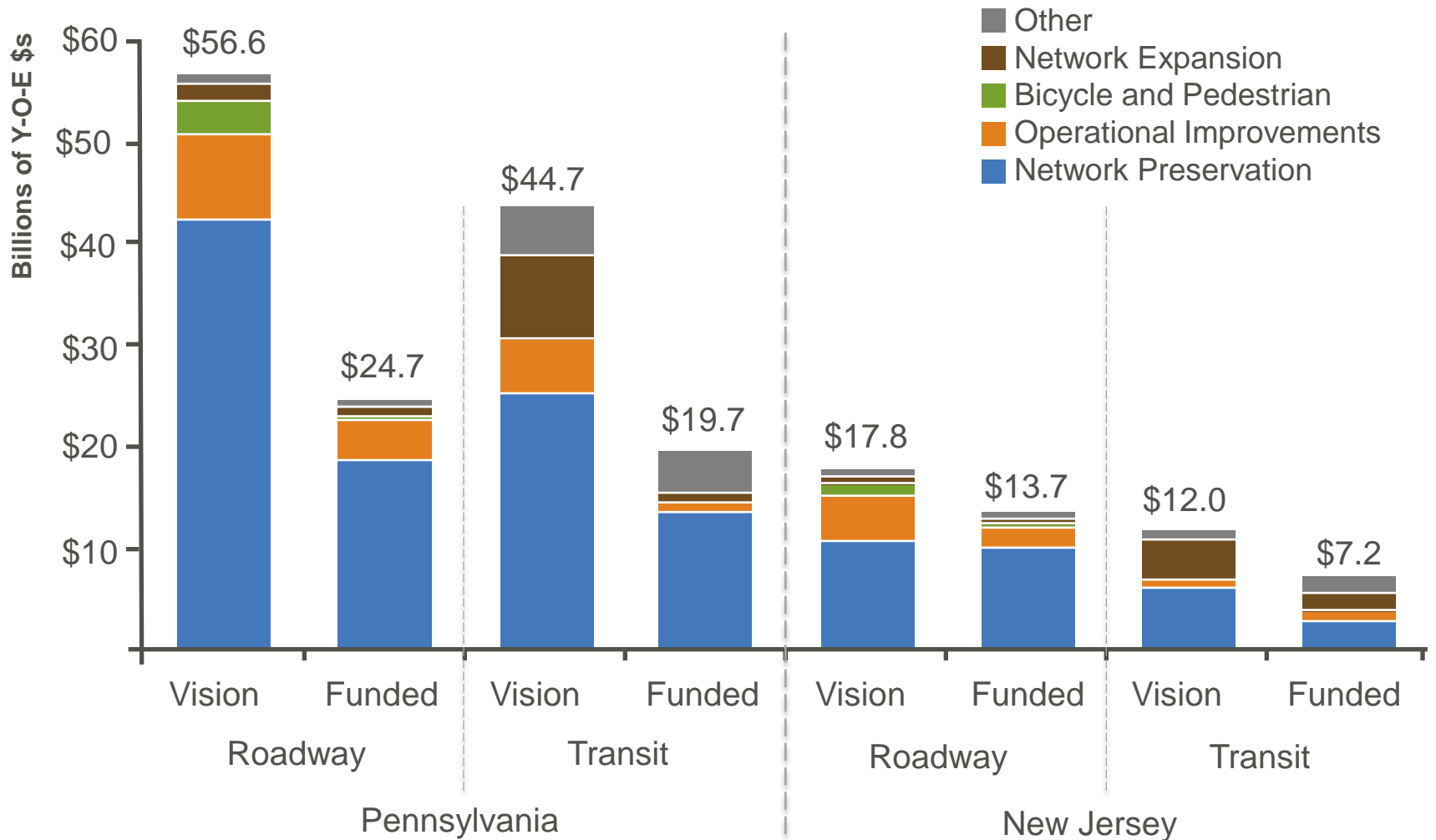
Using Key Strategies:

- **Enhance Education**
- **Increase Regional Cooperation & Government Efficiency**

Land Use Vision



Vision and Funded Plan



Major Regional Project Webmap

Submit comments on the Draft
Connections 2045 Long-Range Plan

CONNECTIONS 2045

Roadway Projects

- Roadway System Preservation
- Roadway Operational Improvements
- Roadway System Expansion
- Bicycle and Pedestrian

Transit Projects

- Transit System Preservation
- Transit Operational Improvements
- Transit System Expansion

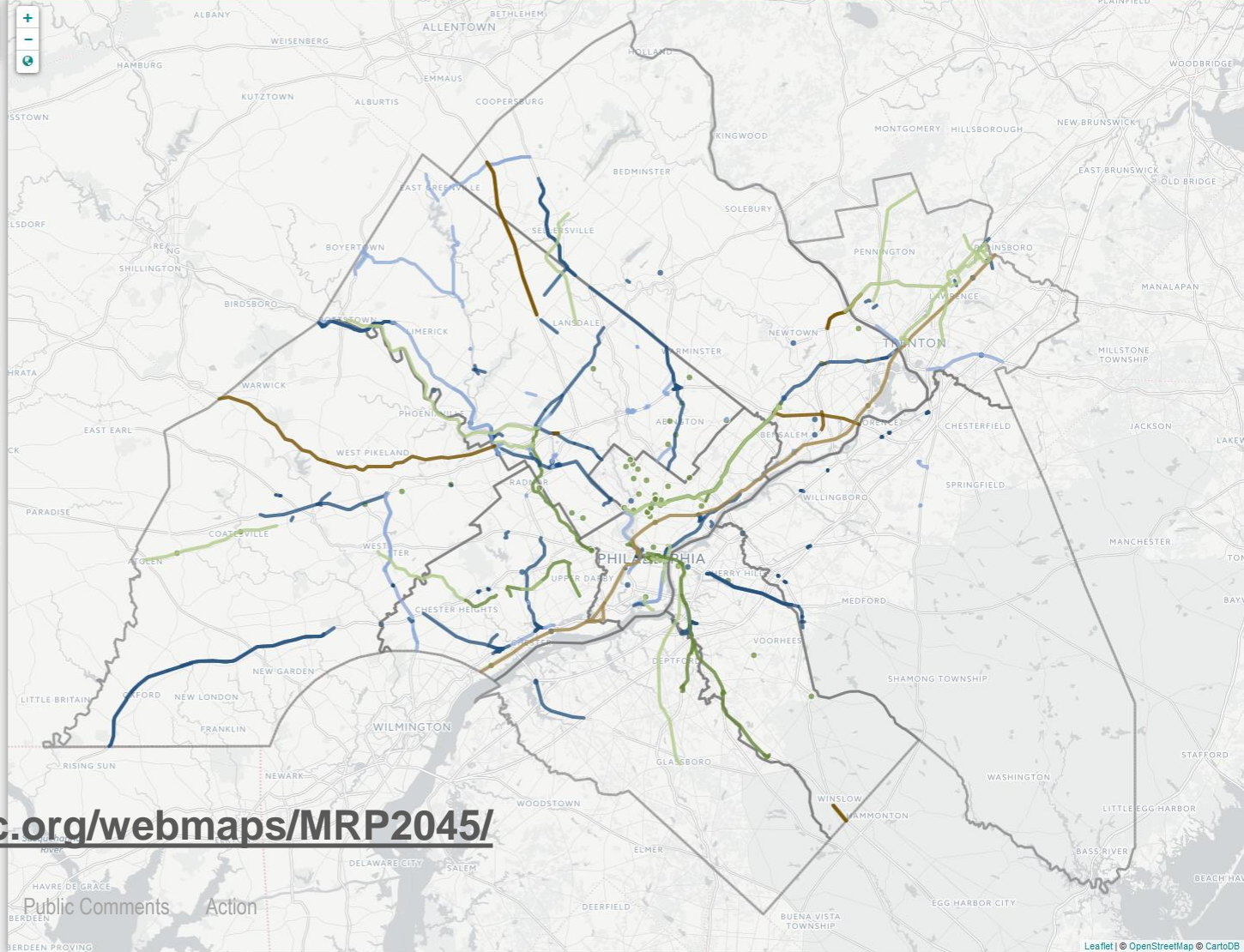
External Projects

- Externally Funded

Some projects do not have geographic limits and cannot be mapped, for the full list of projects [view the table.](#)

Legend

- Roadway Funded
- Roadway Unfunded
- Transit Funded
- Transit Unfunded
- Externally Funded
- Externally Unfunded



<https://www.dvrpc.org/webmaps/MRP2045/>

VISION



Be more **equitable** with a reduction in poverty, increased economic mobility, and racially and socioeconomically integrated communities. Give all children in the region, no matter where they live, access to good schools and an education that prepares them for the jobs of the future.

AN INTEGRATED, MULTIMODAL TRANSPORTATION NETWORK



HAV Uncertainty

Decrease

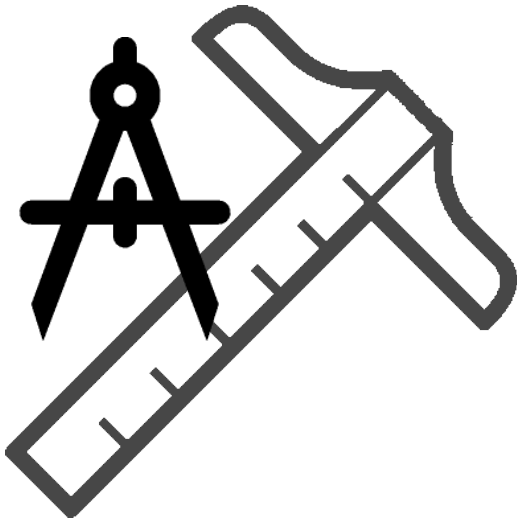
Implication

Increase

New / Changed Goals

- Encourage Regional Cooperation & Multimunicipal Planning
- Enhance Business Growth through Government Efficiency
- Promote Equitable Access to Transportation for Vulnerable Persons
- Build Inclusive Communities & Develop without Displacement
- Move Toward Zero Transportation Deaths
- Build Partnerships and Adapt to a Changing Transportation Marketplace
- Improve Transportation System Management and Operations

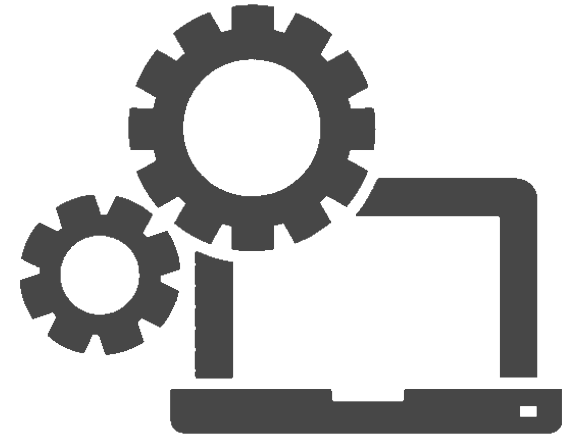
Transportation Strategies



Design



Markets



Technology

Public Comments

- Bryan Quigley – Environment and Cybersecurity
- Ed Fox – Remove Wrightstown as a Center
- Joseph Russell – Use transportation investments to build livable communities
- Tom Schaffer – 69th Street TC Garage, add Delco to ‘Improved Transit Access to PHL’ project
- Randy Waltermeyer – Paoli-Thorndale Line and US 202, Section 100
- Brenden Read – Enhance transit service in region’s outer areas
- John Dodds, Philadelphia Unemployment Project – Job access & reverse commute key for reducing poverty
- John Boyle – Bike/ped funding & projects, Vision Zero, AV Opportunities
- Dana Dobson – New technologies to create safer & sustainable transportation
- Boyle, Dobson, and Olivia Glenn – The Circuit Trails

Action....

Recommend DVRPC Board adoption of the *Connections 2045 Plan for Greater Philadelphia*, as the long-range plan for the DVRPC region.



WWW.DVRPC.ORG/CONNECTIONS2045

Questions or Comments?

CONNECTIONS

2045

Plan for Greater Philadelphia

WWW.DVRPC.ORG/CONNECTIONS2045



Transportation
Improvement
Program



TIP

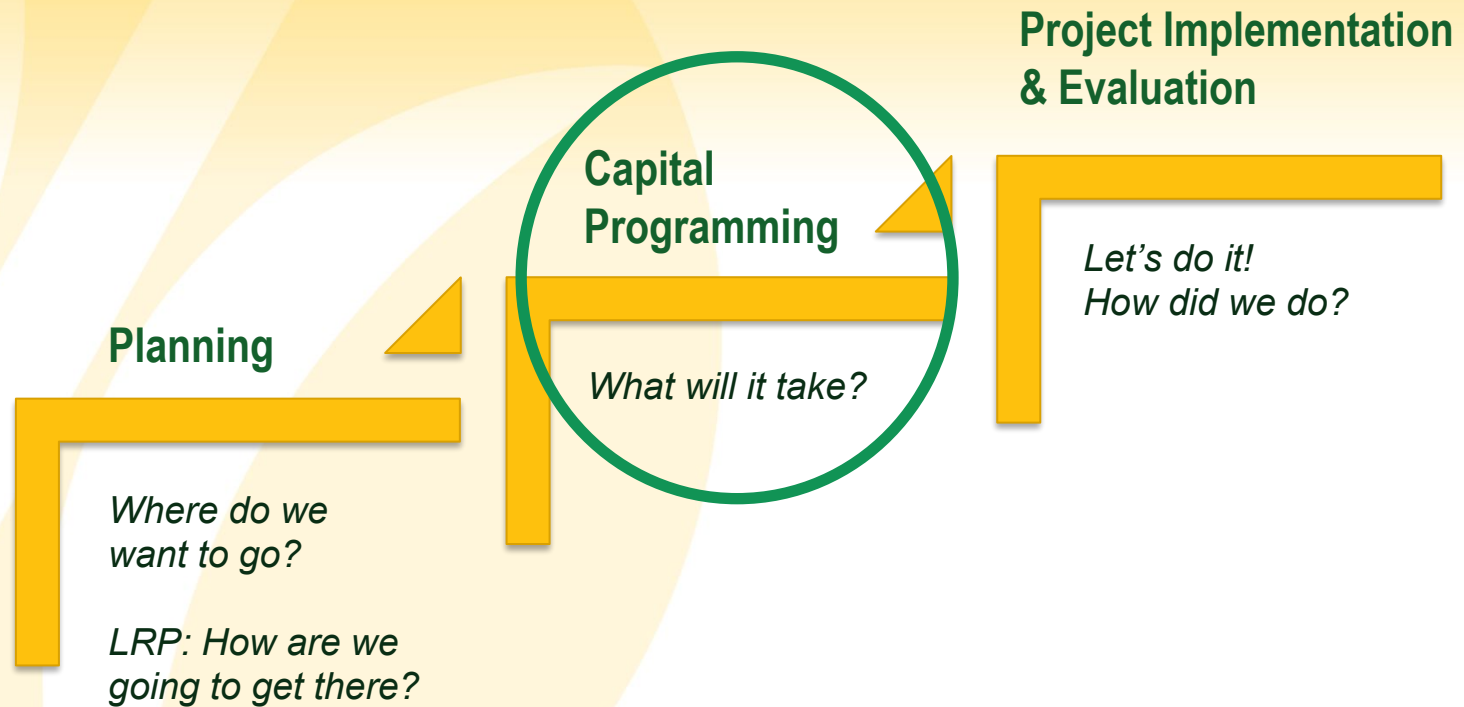
Proposed Adoption of the Draft DVRPC FY2018 TIP for NJ

(FY2018 - 2021)

October 10, 2017 RTC Meeting



TIP = Capital Programming

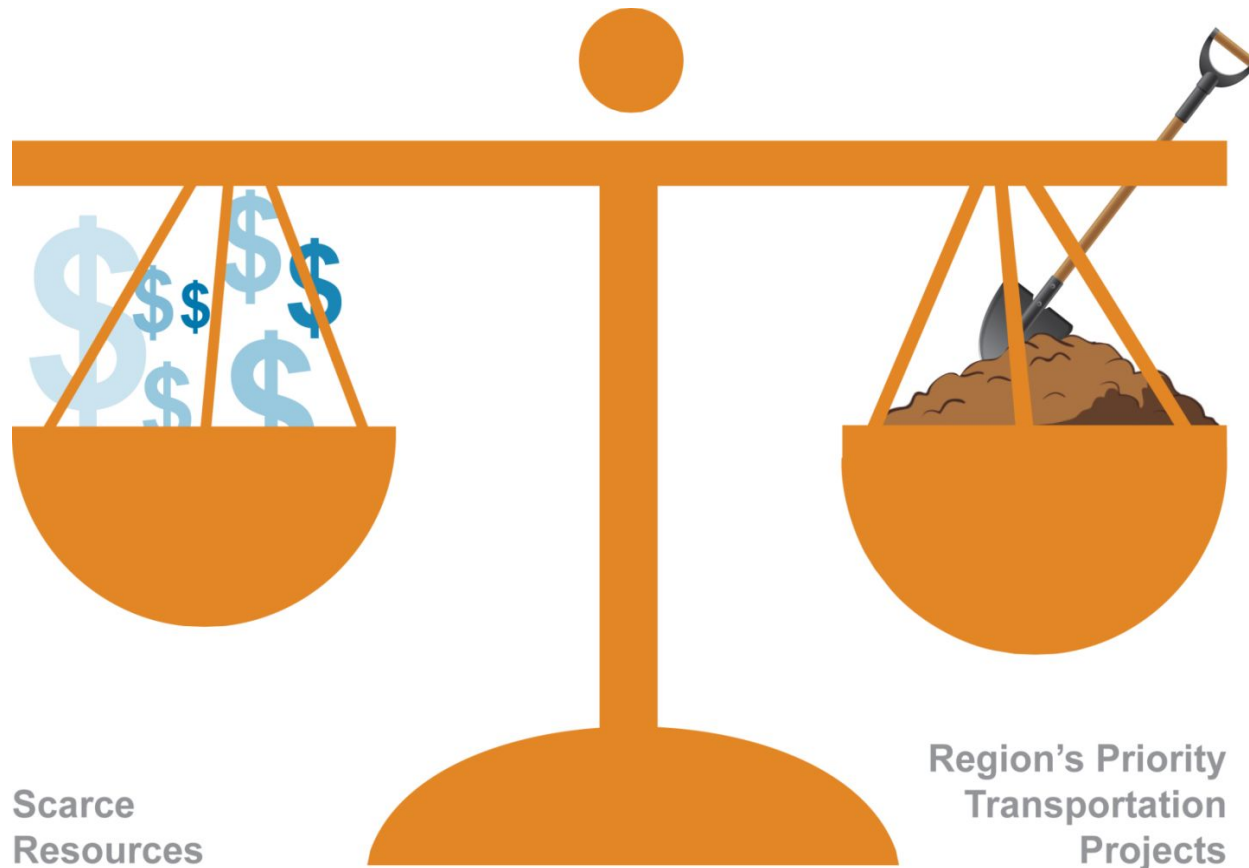


What is the TIP

- ▶ Developing and maintaining the TIP makes the region **eligible** to receive and spend federal transportation dollars!



Regional Decision Making is Critical



Examples of Project Categories (for highway funded projects)

- ▶ Roadway Rehab/Reconstruction/Restoration - 26.9%
- ▶ Interchanges/Intersections, Signals, ITS - 17.9%
- ▶ Highway New Capacity - 15.2%
- ▶ Bridge Replacement/Rehabilitation - 12.2%
- ▶ Bicycle/Pedestrian/Streetscapes - 1.5%
- ▶ Other (*reserve line items, county bus purchases, etc*) - 26.3%





BEFORE

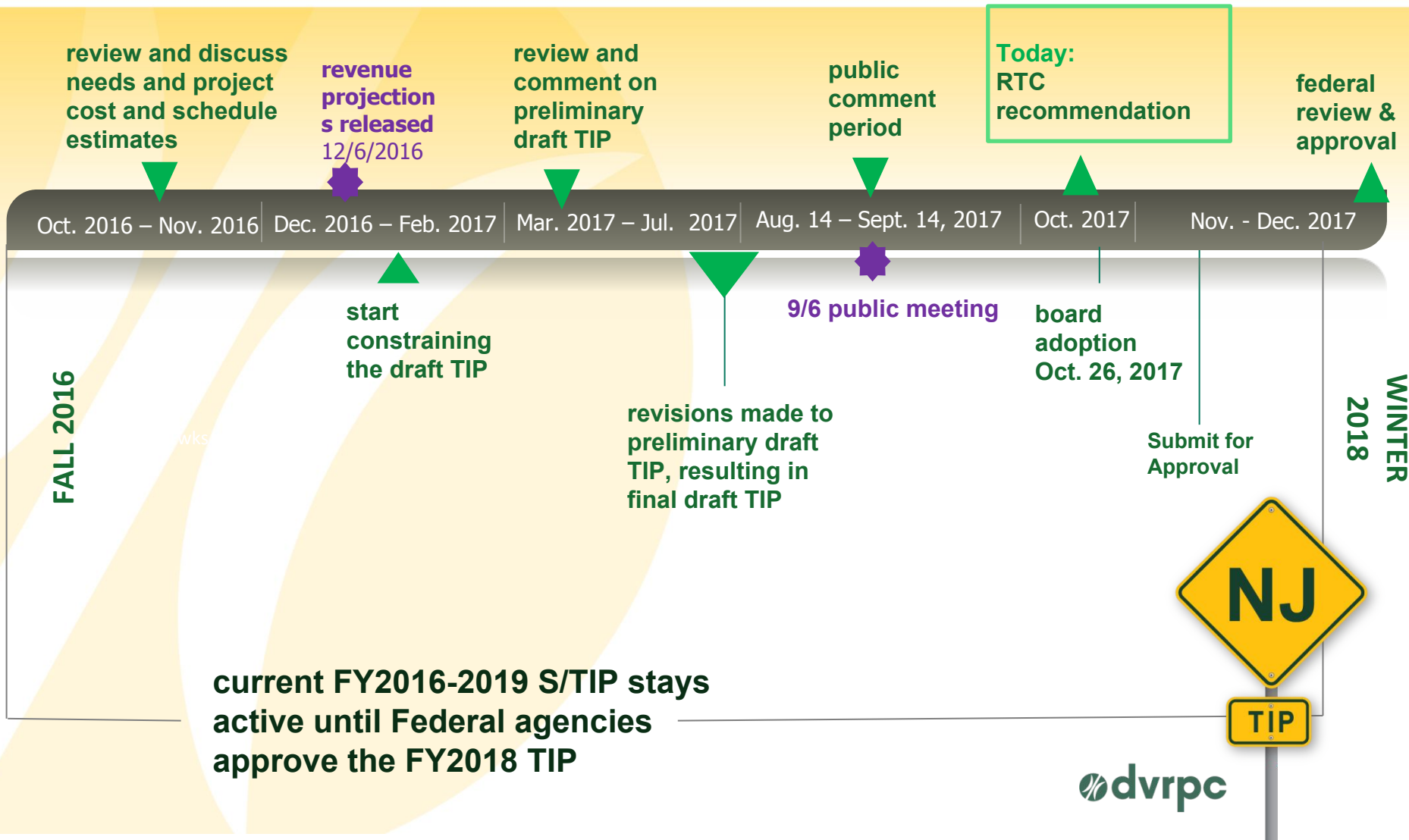


AFTER

TIP

PHOTO CREDITS: (LEFT) REMINGTON & VERNICK ENGINEERS & AFFILIATES, (RIGHT) KWAN HUI

Almost 1 Year to Develop the Draft TIP for NJ



DVRPC Region – Still Over \$7 Billion!

**PA and NJ TIPs =
\$7,413,353,000 over 4 years**

PA TIP (FY2017-20)

\$5,388,015,000

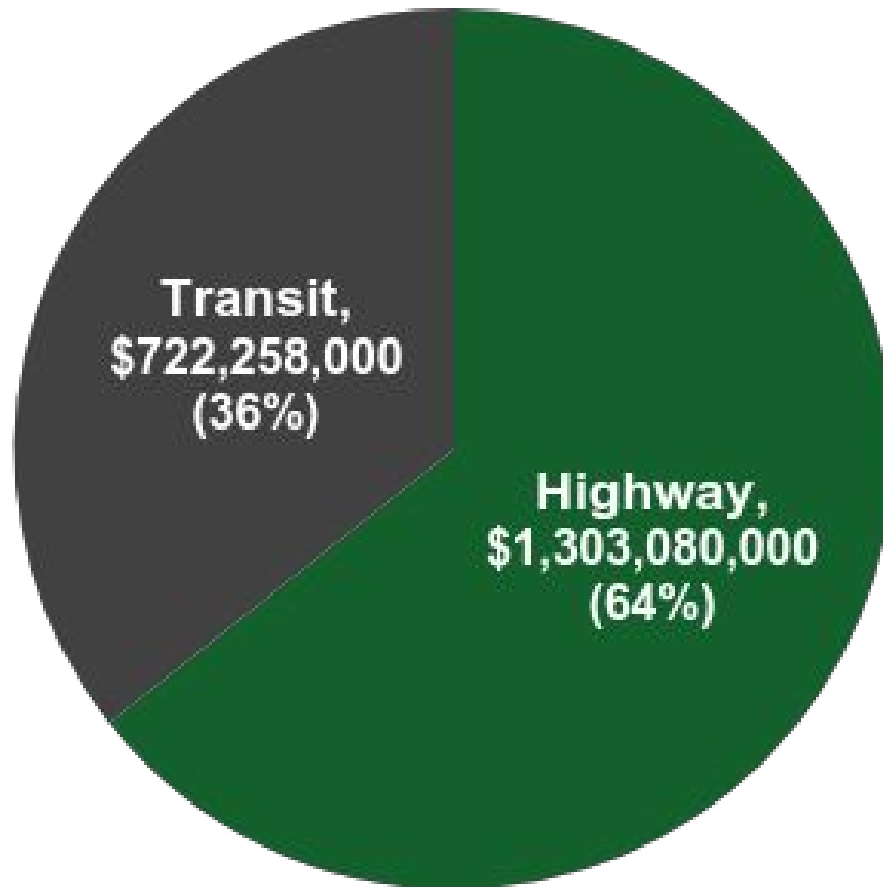
DRAFT NJ TIP (FY2018-21)

\$2,025,338,000



TIP

Draft NJ TIP: \$2 Billion o/ 4 Years, 152 projects



Highway (Draft): New/Returned Projects and Programs

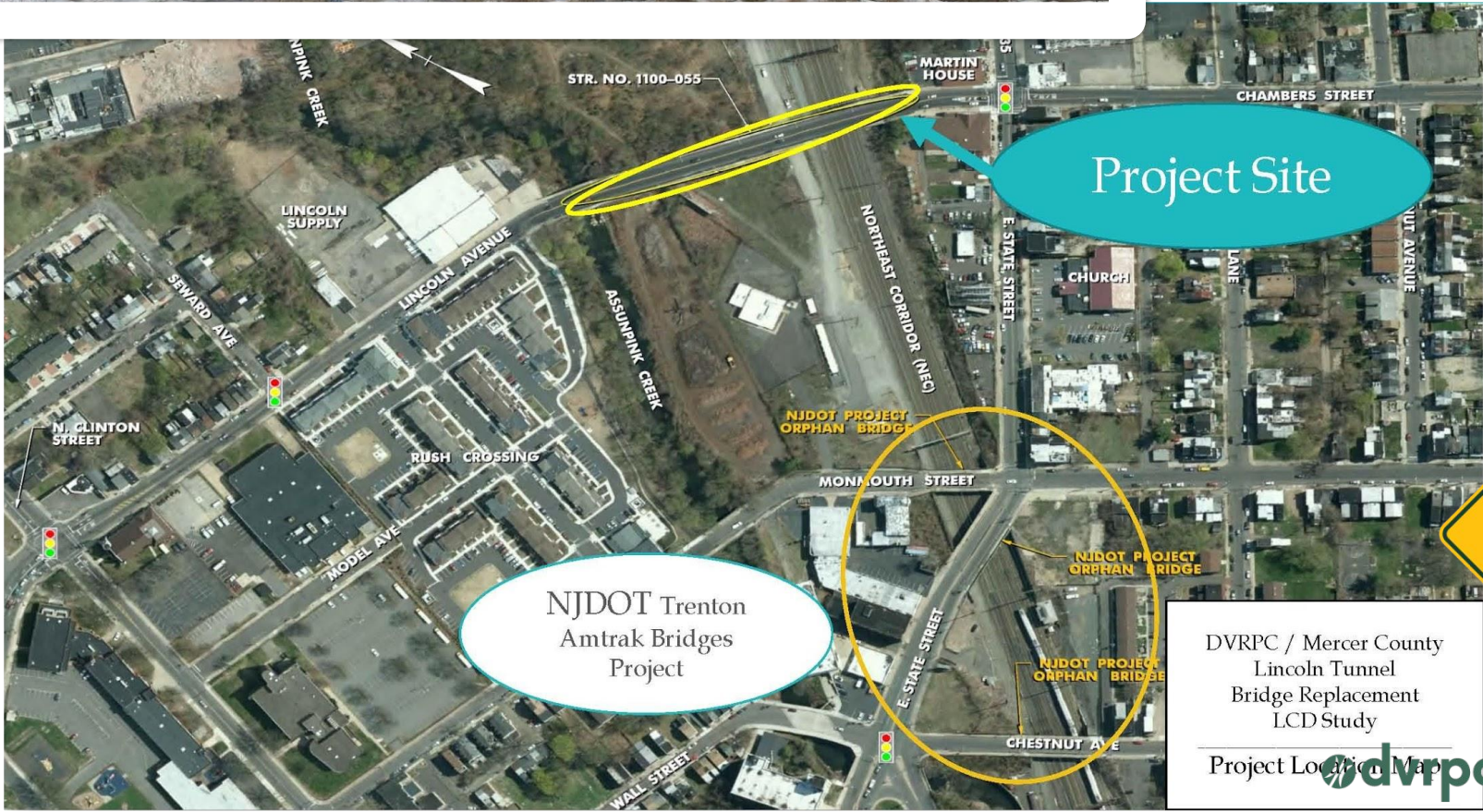
- ▶ **DVRPC Highway Program**
 - 6 New Projects (5 are locally sponsored)
 - 9 Highway Projects “graduated” from CD phase (2 local)
 - 9 new projects with CD phase only
 - 2 projects “returned” to the TIP
- ▶ **Study and Development Program (S&D)**
 - 1 new study also have funding in Highway Program (Rt. 130 Bridge o/ Main Branch of Newton Creek, DB #16340)
 - 8 studies are still funded in S&D and Highway Programs
- ▶ **NJDOT Statewide Program – 9 New**





Local CD Grad

Mercer County's
Lincoln Avenue/Chambers
Street Bridge over Amtrak
and Assunpink Creek
(\$40 million CON est.)



Project Site

NJDOT Trenton
Amtrak Bridges
Project

DVRPC / Mercer County
Lincoln Tunnel
Bridge Replacement
LCD Study
Project Location Map



NJDOT will advance 2 additional projects to CD, since Draft TIP was published:

1. Burlington County

Route 130 and Delaware Avenue/
Florence-Columbus Road (CR 656) intersection

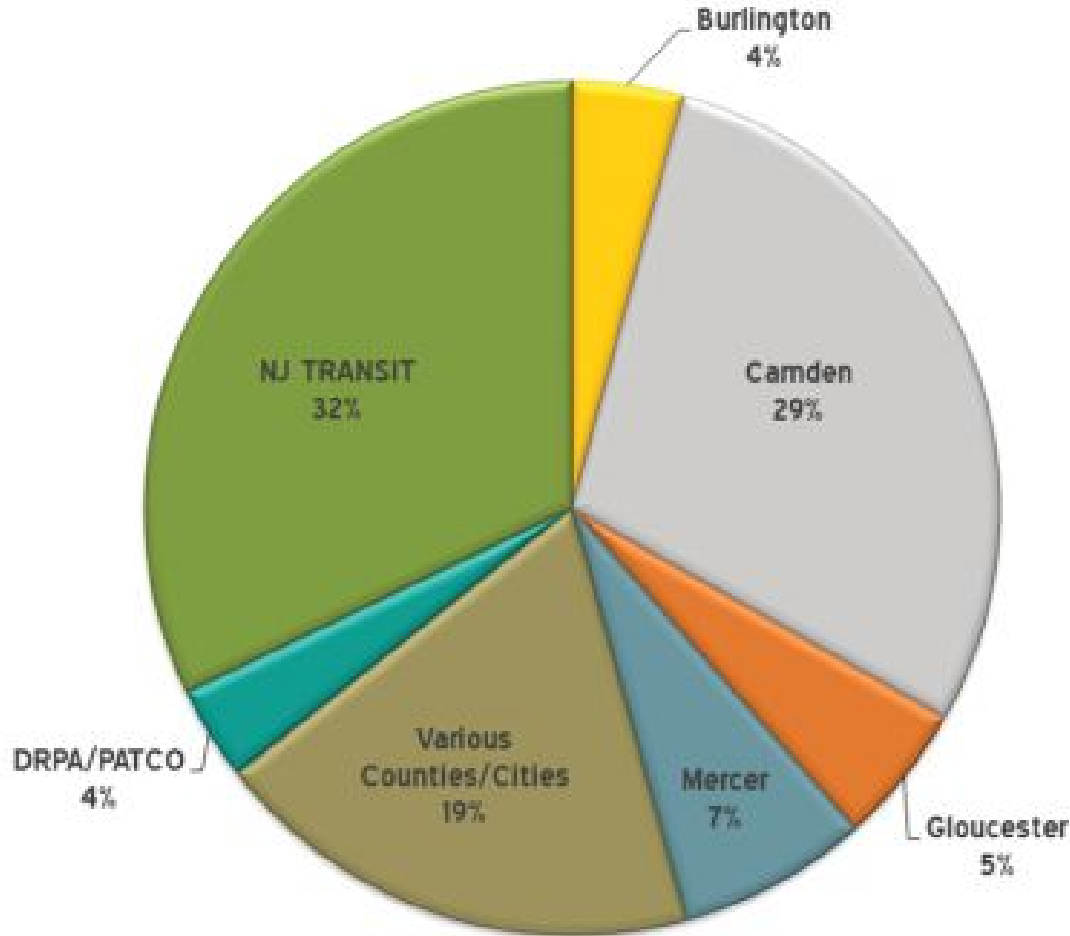


2. Mercer County

Alexander Road Bridge
over Delaware and
Raritan Canal
(DB #18312)



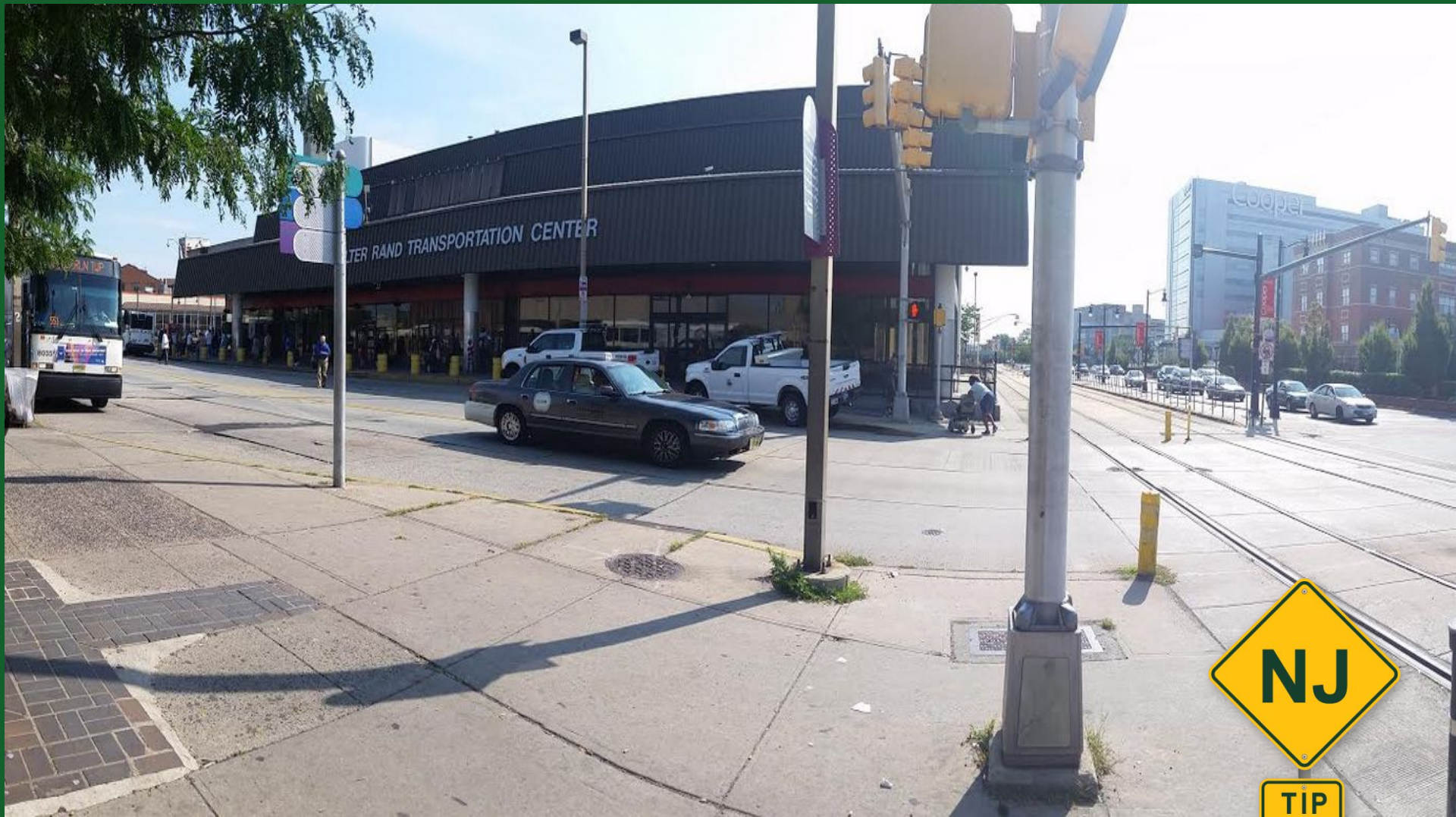
DRAFT NJ TIP: Cost Summary by County and Transit Operator



Study work will continue for the Glassboro-Camden Rail Line (DB #T302)

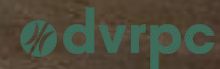


Walter Rand Transportation Center Improvements (DB #T303)



Reopening of PATCO's Franklin Square Station

NEW Transit Project/Program



Other New Items (Draft NJ TIP)

- ▶ **Upcoming DVRPC CMAQ Competitive Program (at least \$6 Million)**
 - \$1 million set-aside for construction-ready Circuit Trail projects
- ▶ **More CMAQ, HSIP, and STP-STU funding for Local Program**
- ▶ **New Federal Fund Source: NHFP**
 - National Highway Freight Program (for Highway and Rail)



Other New Items (Draft NJ TIP)

TTF Reauthorization provided new funding levels for County Aid, Municipal Aid, Local Bridge program, Freight funding and others...

- County Aid (DVRPC): + \$16.7 million
- Municipal Aid (DVRPC): +\$14.0 million
- Urban Aid: +\$5.0 million
- Local Bridges, Future Needs: +\$22.3 million
- (NEW) Local Freight Impact Fund (statewide): \$30.1 million



Public Comment on Draft TIP

- ▶ **Public Comment Period**
 - *August 14, 2017 to September 14, 2017*
- ▶ **Sept. 6th Public Info. Session in Collingswood, NJ, 6-8 PM**
- ▶ **View complete documents on website at**
www.dvrpc.org/tip
- ▶ **Advertisement via multiple means; comment guide**
- ▶ **Comments sent to DVRPC:**
 - Public Comment Web Map Application
 - Email to tip@dvrpc.org
 - U.S. Mail



Comments and Responses

- ▶ **“Index of Comments”**
 - summary
 - every “issue” has an “Item ID” or “Item #”
 - commenter
 - Individuals or interest groups from general public
 - DVRPC “Planning Partners”
- ▶ **“Original Comments” (Full version)**
- ▶ **Responses provided by appropriate entity**
(to be completed prior to 10/26 Board meeting)



Comments and Responses

- ▶ **Supports project - 47%**
 - Camden-Glassboro Light Rail Line
- ▶ **Requests for a new TIP project/line item/study - 23%**
- ▶ **Project concerns, questions, and/or suggestions - 20%**
- ▶ **General concerns, questions, and/or suggestions - 6%**
- ▶ **Requests to expand project scope - 3%**
 - Alexander Rd. Bridge o/ D&R Canal
- ▶ **Not supportive of project - 1%**



List of Recommended Changes

- ▶ List of Recommended Changes will provided to the NJ Subcommittee of the RTC for review and approval. DVRPC staff will answer questions and confirm approval via call or email.
- ▶ List of changes would become part of the final, printed TIP document



Examples of Recommended Changes

- ▶ **Schedule adjustments + cost restructuring**
 - NJDOT sponsored projects
 - Local sponsored projects
- ▶ **Various technical changes**



Action Request:

Delegate TIP Adoption to the Subcommittee

- ▶ That the RTC delegate the approval of the FY2018 TIP for New Jersey to the NJ Subcommittee of the RTC, pending review and acceptance of the final List of Recommended Changes to the Draft FY2018 TIP.





Transportation
Improvement
Program

TIP

Thank You!

www.dvrpc.org/TIP





FY 2018

WORK PROGRAM AMENDMENTS

District 6 Modeling Assistance
Freight Model Enhancement

October 10, 2017
RTC Meeting

Matt Gates

District 6 Modeling Assistance

- Allow DVRPC to hire an additional Travel Modeler
- Would work exclusively on PennDOT traffic studies
 - I-95 corridor
 - Others, as needed
- Advertise as a Senior Transportation Engineer
- Funding for two fiscal years
 - FY2018 - \$105,000
 - FY2019 - \$220,000

Action Requested

- That the RTC recommend the Board amend DVRPC's FY 2018 Planning Work Program to include the District 6 Modeling Assistance and acknowledge that this work will be funded from a new MPMS number (TBD).

Enhanced Freight Model

- Replacement for current model's “heavy truck” and “light truck” trip purposes.
- Freight Generation by NAICS → Truck Trip Generation
- Tour-Based Truck Model with Multi-Class assignment
- Extensive data collection
 - ▣ Vehicle classification counts
 - ▣ ATRI truck GPS traces
 - ▣ Commodity Flow Survey microdata
 - ▣ Parcel delivery data
 - ▣ Special Generators – Ports, Distribution Centers

Enhanced Freight Model

- Funding for three fiscal years
 - FY2018 \$120,000
 - FY2019-20 \$380,000
- Includes consultant assistance in FY2019

Action Requested

- That the RTC recommend the Board amend DVRPC's FY 2018 Planning Work Program to include the Enhanced Freight Model and acknowledge that this work will be funded from MPMS No. 92889.

King of Prussia Rail Project

An Extension of the Norristown High Speed Line



King of Prussia Rail

Liz Smith, SEPTA

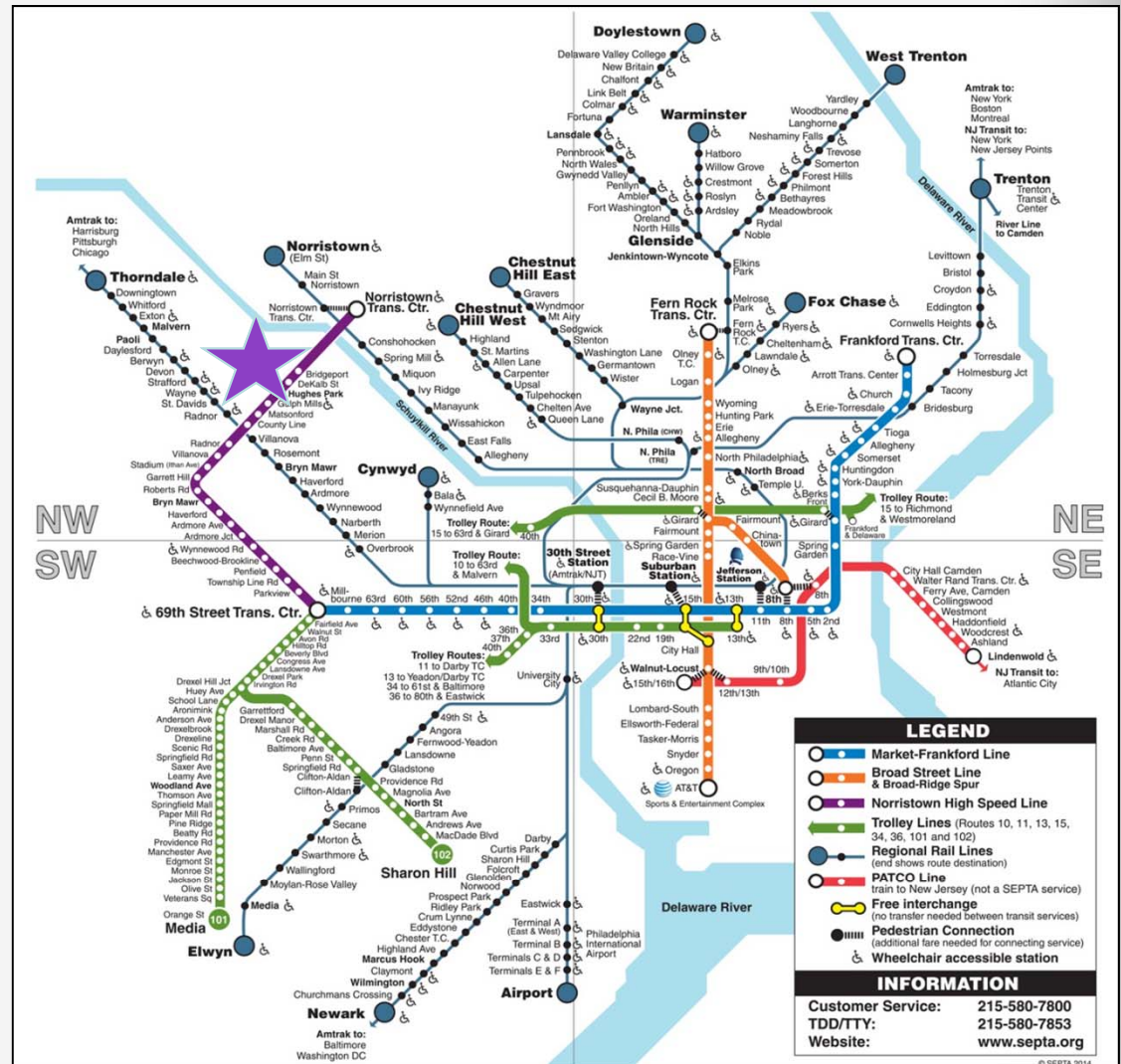


Project Background

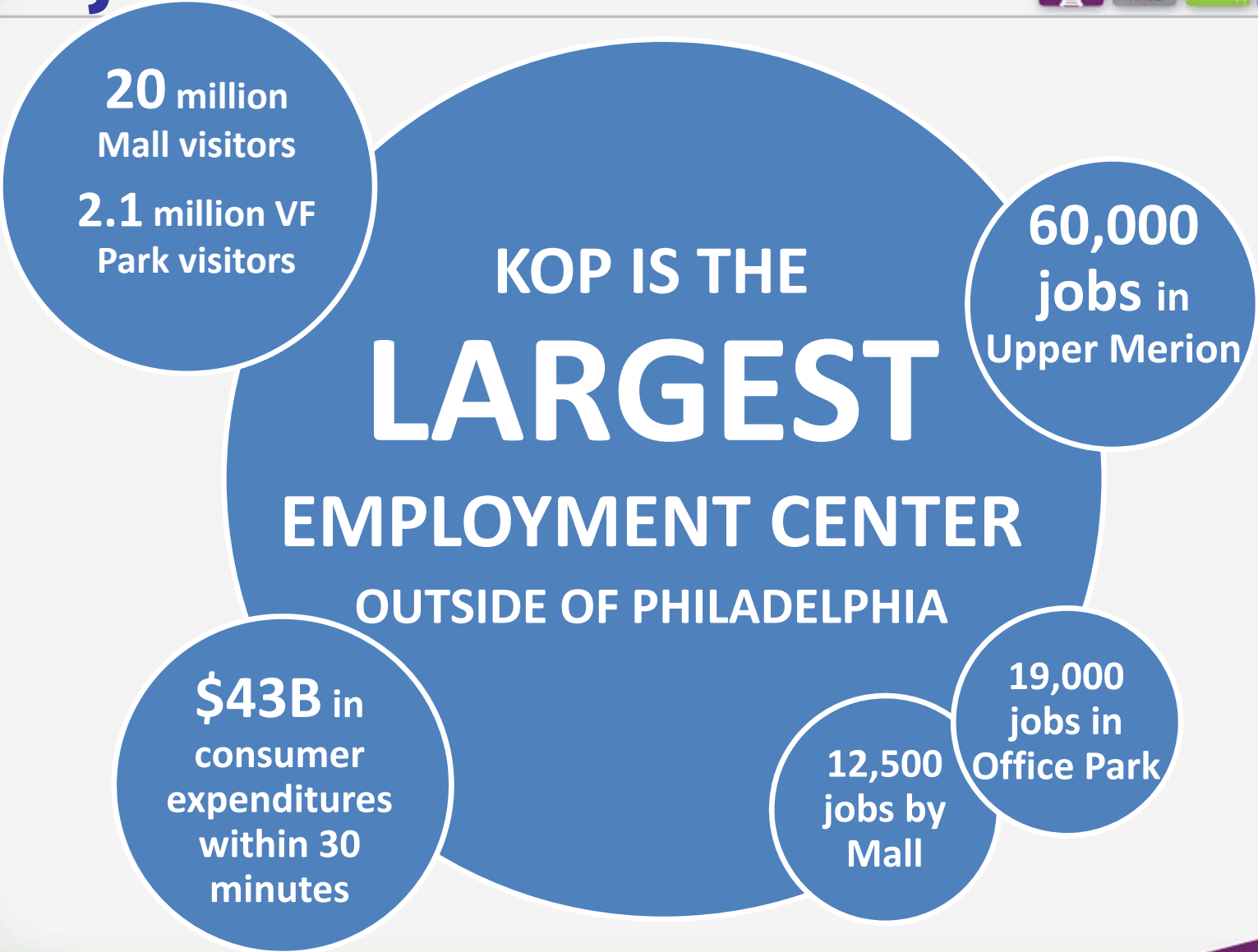


King of Prussia not currently served by rail

- Although served by 6 bus routes with high ridership, riders experience low on-time performance and long trip times



Project Need



Project Need

KOP IS GROWING ...

Mall expanded by 155,000 sqft

Business park re-zoned for mixed use

Village at Valley Forge
1.5 M sqft office
500 hotel rooms
2,000 residential units

... IT NEEDS BETTER TRANSIT TO SUPPORT EVOLVING NEEDS

Lower rate of licensed drivers

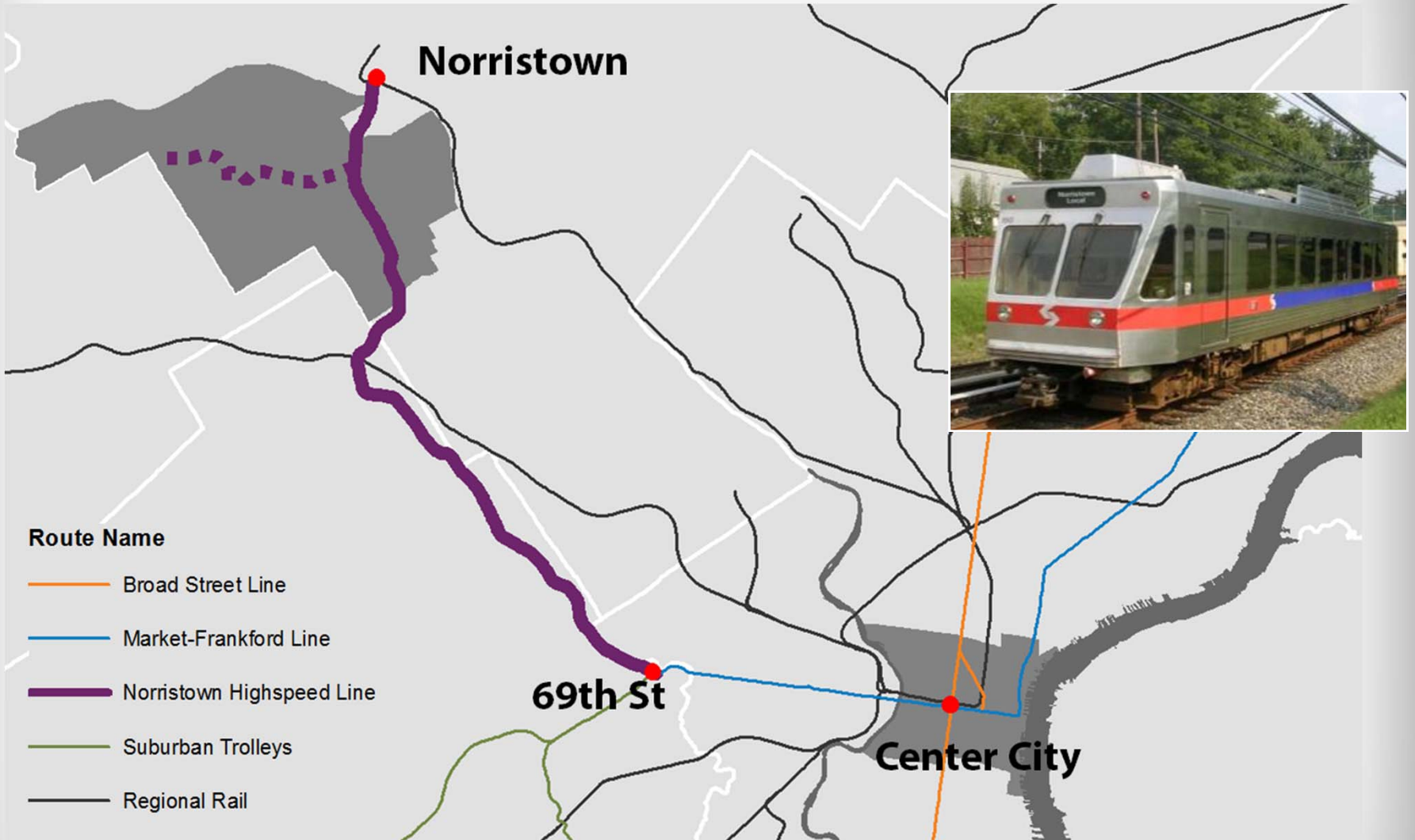
Six bus routes
5,600 riders
65% on-time



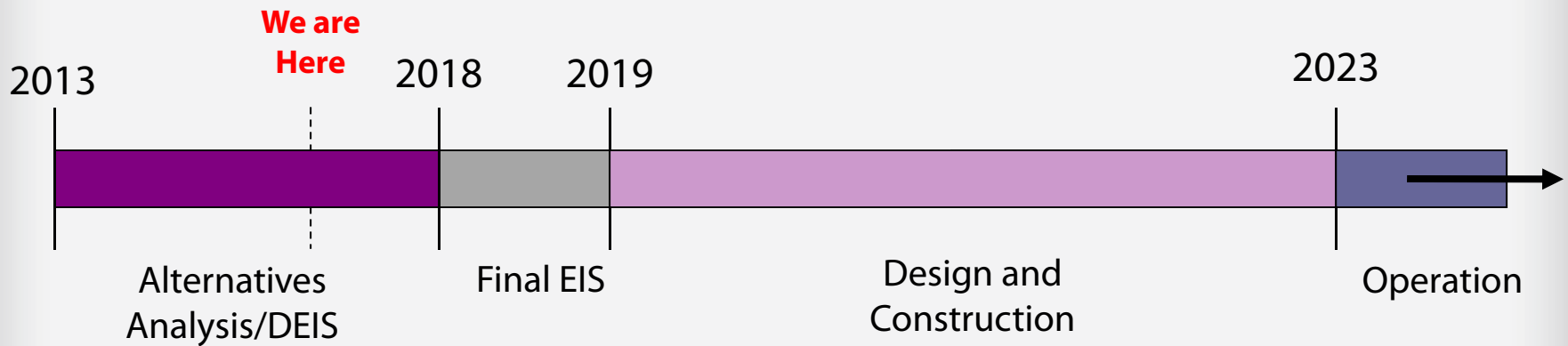
NHSL
99% on-time
No Schuylkill traffic



Norristown High Speed Line



Project Schedule



Planning Process



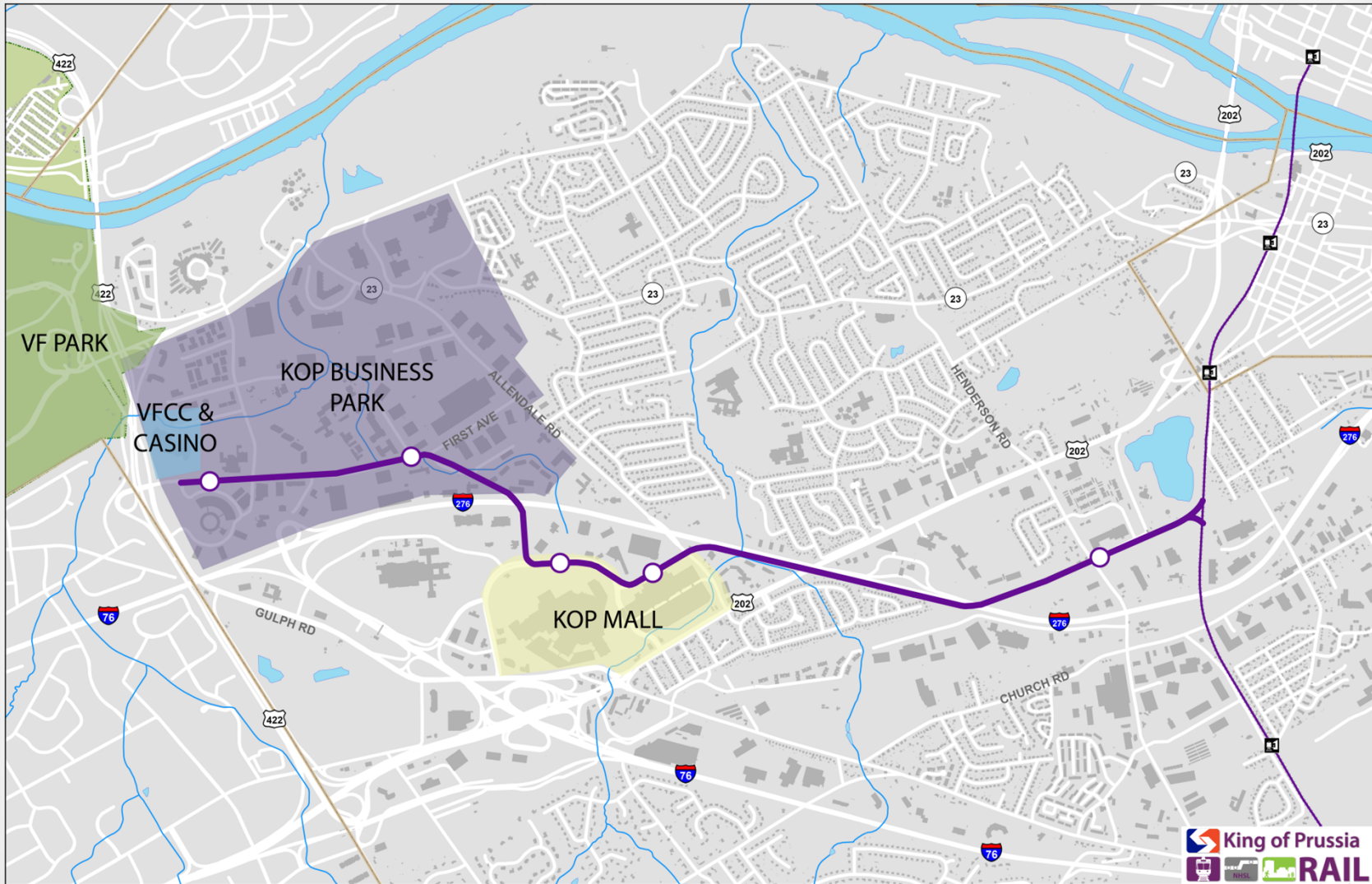
Alternatives Analysis

A process to work with the public and project stakeholders to determine the best routing (Alternative) for the project, looking at various factors including costs, benefits, and impacts.

Draft Environmental Impact Statement (DEIS)

The purpose of the EIS is to provide full and open evaluation of environmental issues and alternatives, and to inform decision-makers and the public of reasonable ways to avoid or minimize negative impacts and enhance the quality of the environment.

Recommended LPA



Recommended LPA



Project Facts	
Capital Cost	\$1.1B
Increased O&M Cost	\$4.9M
Ridership	9,500
69th St to Business Park (local)	36 min
69th St to Business Park (express)	22 min
NTC to Business Park (local)	16 min

Rendering



Visualizing KOP Rail | Artistic rendering of KOP Rail traveling along Mall Boulevard

Rendering



Visualizing KOP Rail | Artistic rendering of KOP Rail traveling along 1st Ave

Public Involvement

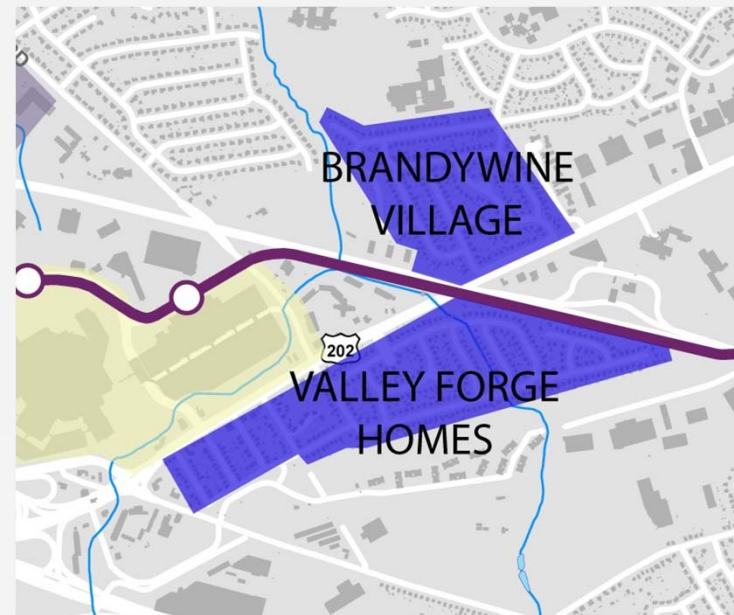
Key Part of Project

- Public Meetings
 - 6 rounds of meetings to date
 - Public Hearings planned for Fall 2017
- Project Committees
- Stakeholder Coordination
- Community Working Group
- Website/Social Media



Residential Concerns

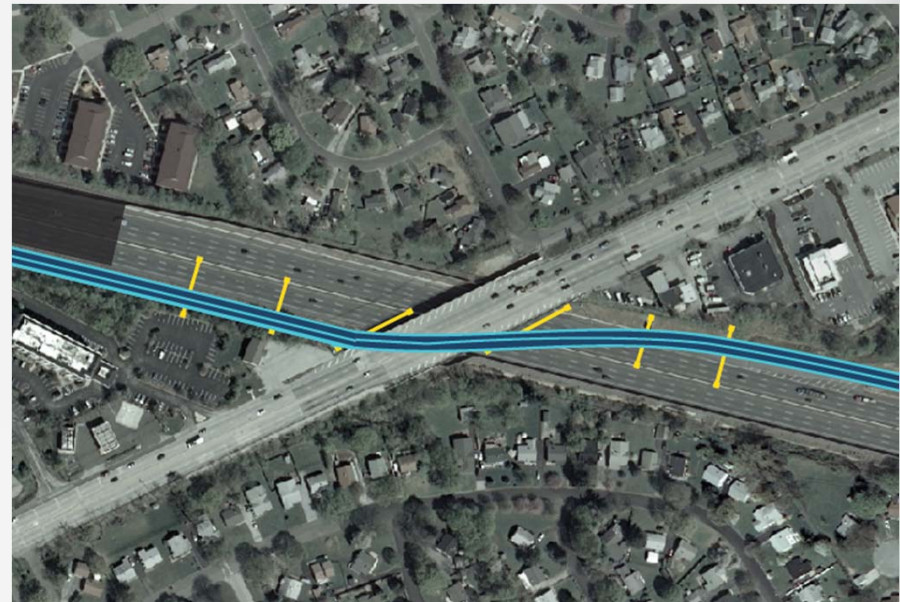
- Concerns heard from residents adjacent to alignment with backyards on Powderhorn, Bluebuff and Kingwood
 - Impacts on Property Values
 - Sinkholes
 - Visual Impact
 - Noise and Vibration
 - Construction



LPA Design Options

Resulted in Follow Up Meetings & Development of Design Options

- Backyard Visits, Neighborhood Meetings, Community Working Group
- Created Design Options for recommended LPA based on the Community feedback



Rendering



DEIS document to be released by FTA on October 13th

- Public Hearings
- Public Information Sessions
- 45 day Comment Period
 - Comments can be made via public or private testimony at public hearings, project website, email, or mail.

Public Hearings



Monday November 13th

- Doubletree Hotel, KOP
- Open House: 1-2 pm, 5-6 pm
- Presentation and public comment: 2 to 4 pm, 6 to 8 pm

Wednesday November 15th

- Norristown Municipal Building
- Open House: 5-6 pm
- Presentation and public comment: 6 to 8 pm

Why KOP Rail?



It Connects Community with Opportunity by:

- Promoting and strengthening regional growth
- Significantly reducing the daily commute – and commuting costs
- Providing faster, more reliable, and more frequent service and greater access to the region's jobs, premier medical and educational institutions, as well as shopping, dining and entertainment
- Addressing growing mobility needs
- Meeting the needs of development trends, directing future growth

An Extension of the Norristown High Speed Line



Thank You!

www.kingofprussiarail.com

info@kingofprussiarail.com

www.twitter.com/KOPRail