



2000 – 2015 TRAVEL TRENDS

DVRPC RTC Meeting

May 9, 2017

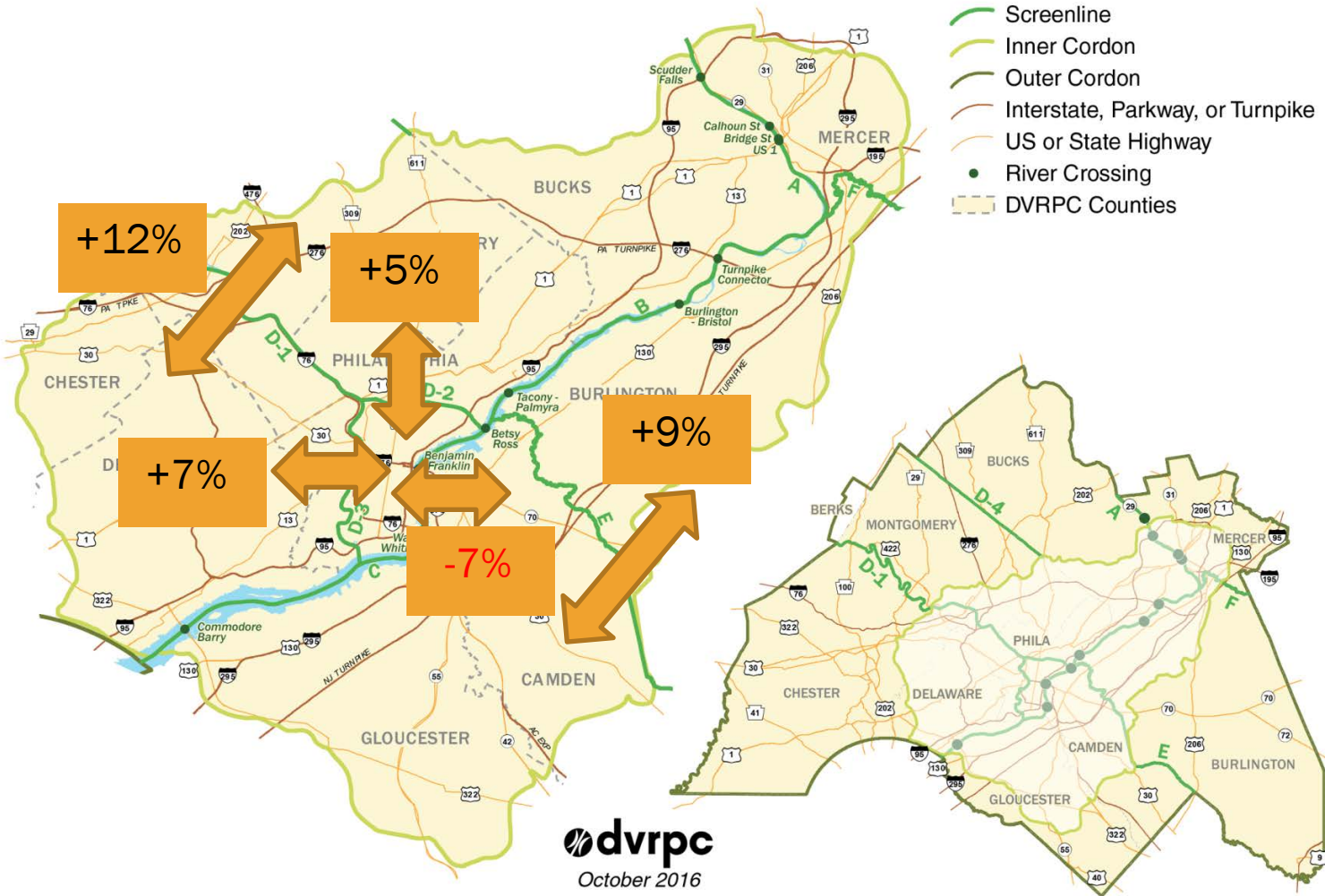
OVERVIEW

- ✘ DVRPC does this report every 5 years
- ✘ It's a snapshot at a point in time
- ✘ By comparing to previous reports - can see how things change over time
- ✘ Needed for model development
- ✘ One drawback - doesn't always tell you WHY things changed

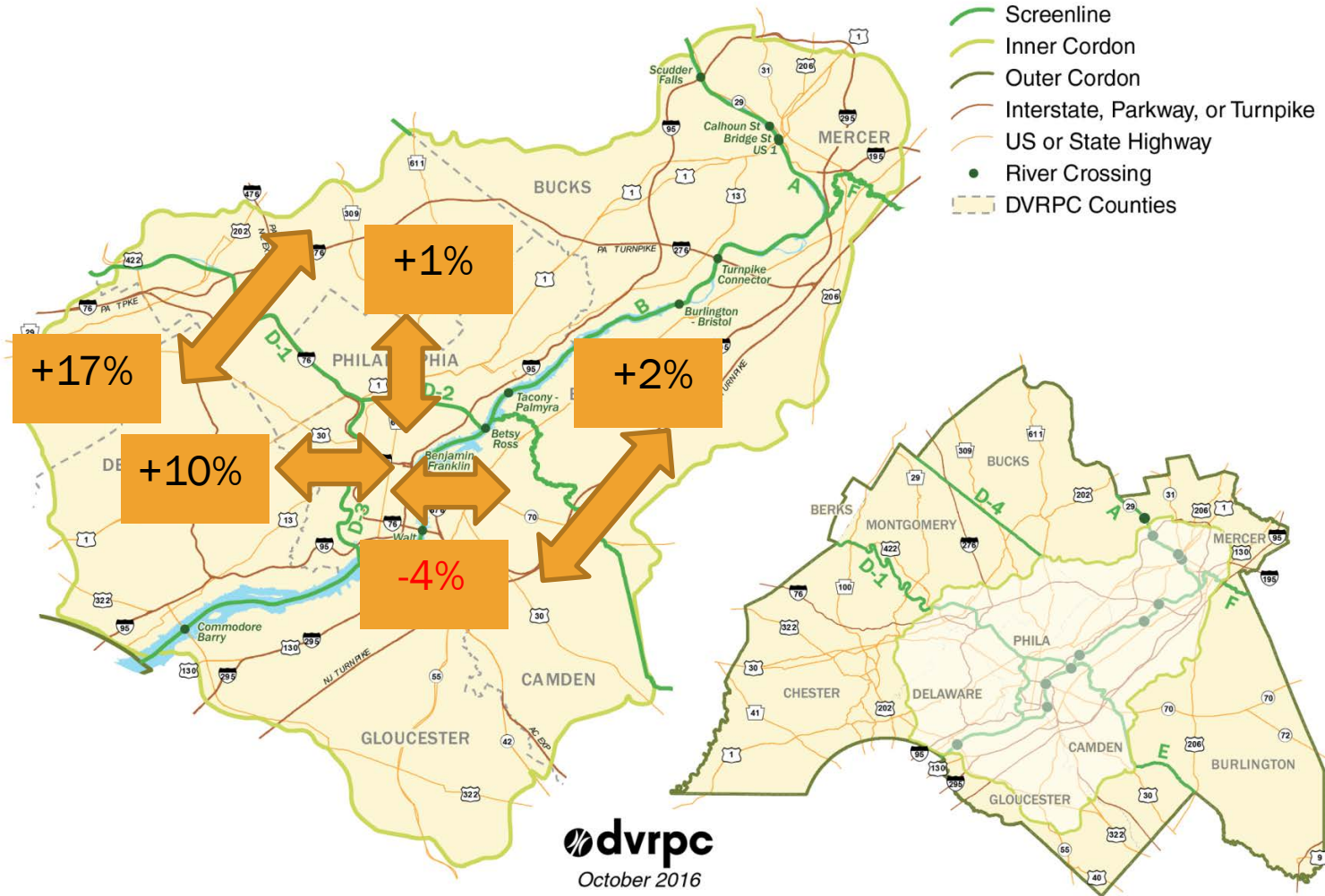
REGIONAL MAP & SCREENLINES



2010 - 2015 HIGHWAY TRENDS



2010 - 2015 TRANSIT TRENDS

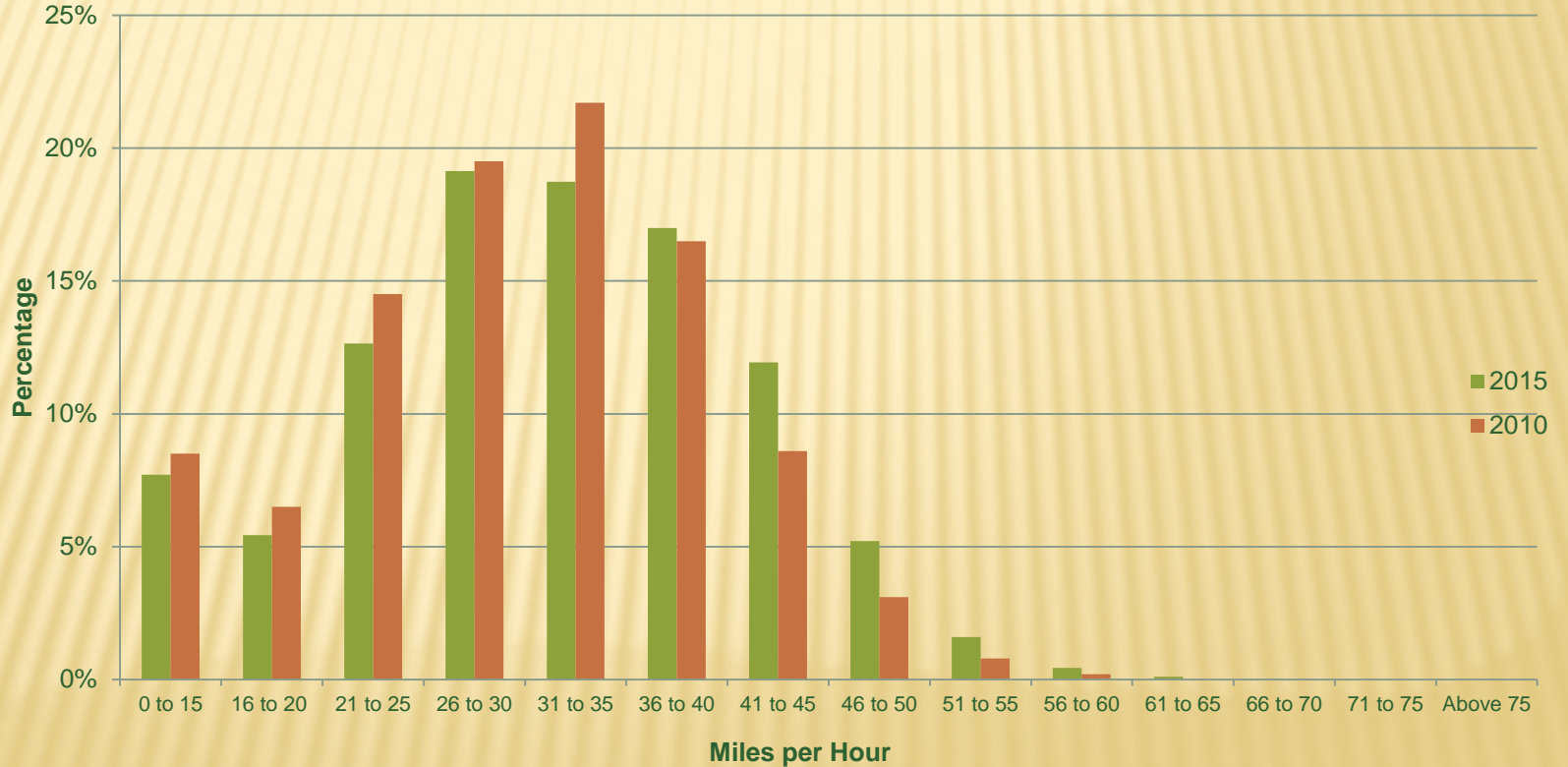


TRANSIT TRIPS

From / To		2010	2015	% Change
West	cross Schuylkill	222,424	244,150	+9.77%
East	cross Delaware	64,606	62,224	-3.69%
North		234,344	237,171	+1.21%
TOTAL		521,374	543,545	+4.25%

SPEED DATA

Weighted Avg
2010 = 29.8
2015 = 31.3



VEHICLE CLASSIFICATION

Vehicle Type	2010	2015
Motorcycle	1%	1%
Passenger Car	77%	76%
2-Axle, 4-Tire Single-Unit Truck	15%	15%
School & Commercial Bus	1%	1%
2-Axle, 6-Tire Single-Unit Truck	4%	4%
3-Axle Single-Unit Truck	1%	1%
4-Axle Single-Unit Truck	0%	0%
4- or Less Axle Single Trailer Truck	1%	1%
5-Axle Single Trailer Truck	1%	1%
6- or More Axle Single Trailer Truck	0%	0%
5-Axle Multitrailer Truck	0%	0%
6-Axle Multitrailer Truck	0%	0%
7- or More Axle Multitrailer Truck	0%	0%
All Trucks and Buses	22%	23%
Heavy Trucks	7%	7%
Tractor-Trailers	2%	2%

TURNPIKES & INTERSTATES

✘ New Jersey Turnpike



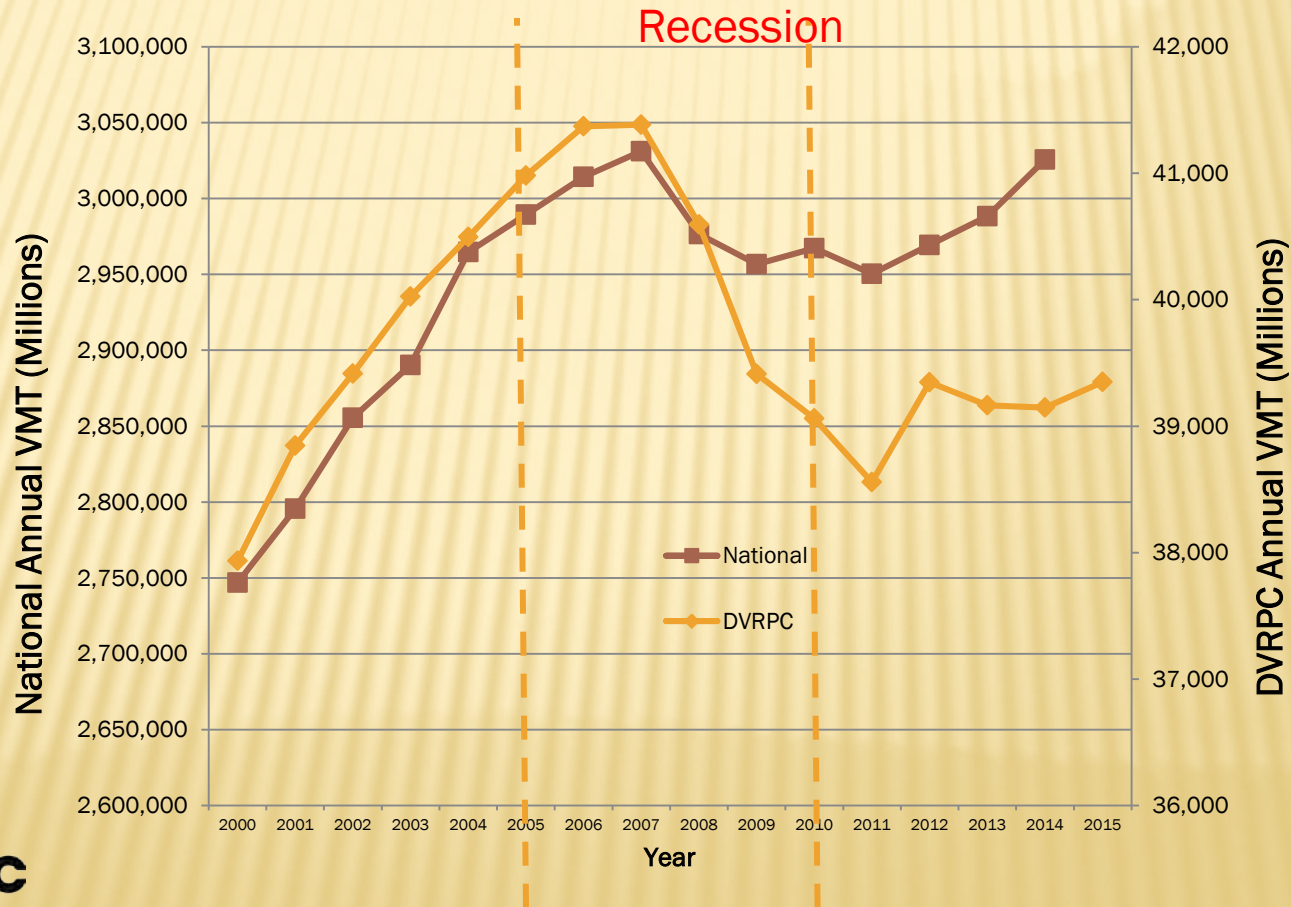
TRAFFIC VOLUME (AADT)

✘ Percentage change for the entire Region

	2000 to 2005	2005 to 2010	2010 to 2015
Traffic Volume (AADT)	+6.80%	-5.30%	+6.80%

VEHICLE MILES OF TRAVEL (VMT)

✘ DVRPC compared to the rest of U.S.



Questions?



DVRPC TRAVEL MODEL UPDATE PLANNING

May 9, 2017
RTC Meeting

Matthew T. Gates

Recent Improvement Planning

Plan for Upgrades to the DVRPC
Regional Travel Demand Model
2010 - 2011

DRAFT

February 2010



Delaware Valley Regional Planning
Commission (DVRPC)

Peer Review

February 2015



Better Methods. Better Outcomes.

3/9/17 Steering Committee Meeting

- Bucks County
- Delaware County
- Montgomery County
- Philadelphia County
- Mercer County
- SEPTA
- NJ Transit
- DRPA
- US Census Bureau
- FTA
- TMIP
- Rutgers University
- Consultants

Completed Tasks

- On-Board Survey
- I-76 Ops Model
- CC Evac Model
- VISSIM Standards
- Household Survey
- Validation Data
- Airport Model
- 2010- 2013
- 2010- 2012
- 2011- 2013
- 2011- 2013
- 2012- 2015
- 2015- 2016
- 2016

Ongoing Tasks

- NJ Transit Bus Surveys
- TIM2.3
- TIM3.0
- DREAM
- Sports Complex
- 2014 – 2017
- 2016 – 2017
- 2013 – 2018
- 2016 – 2017
- 2017

Future Optional Tasks

- Multi-Class Assignment
- Tour-Based Freight Model
- More VISSIM Standards
- Bicycle Assignment Model
- TNC/Taxi/Car Share Model
- Trip Generation Rates for Smart Growth
- Regional Accessibility Map
- Transit Service Planning Model

Optional Tasks, continued

- Dynamic Traffic Assignment Model
- Health Impacts Model
- New Land Use Model
- Autonomous Vehicle Model
- New On-Board Transit Survey
- New Household Travel Survey
- Tourist Survey and Model
- Macro to Micro Model Standards

Questions, comments, feedback

Matthew Gates

Manager, Office of Modeling and Analysis

mgates@dvrpc.org

(215) 238-2911

One Minute Report

- STOPS Training at DVRPC
 - Wednesday, September 6 – Friday, September 8
 - Free for transit operators and other public agencies
 - 25 seats for non-DVRPC staff



FY 2018

WORK PROGRAM AMENDMENT

30th Street Station Area Traffic Forecasts

May 9, 2017
RTC Meeting

Matthew T. Gates

30th Street Station District Plan

- ❖ Amtrak, SEPTA, Drexel, PennDOT, and Brandywine Trust
- ❖ 18 Million ft² new development
- ❖ 40,000 new jobs
- ❖ 8,000-10,000 new residents
- ❖ \$10 Billion investment
 - ❖ \$3.5B for Drexel Yards
 - ❖ \$4.5B in private real estate
 - ❖ \$2.0B in infrastructure



PHILADELPHIA
30TH STREET STATION
DISTRICT PLAN
Growing Philadelphia's Future at 30th Street Station



I-76 Ramp Relocation



Traffic Forecasts

- ❖ 2025 and 2045
- ❖ Daily and Peak Hour
- ❖ No-Build and Build
- ❖ MPMS # 78757
- ❖ \$67,100



Action Requested

- That the RTC recommend the Board amend DVRPC's FY 2018 Planning Work Program to include the 30th Street Station Area Traffic Forecasts.



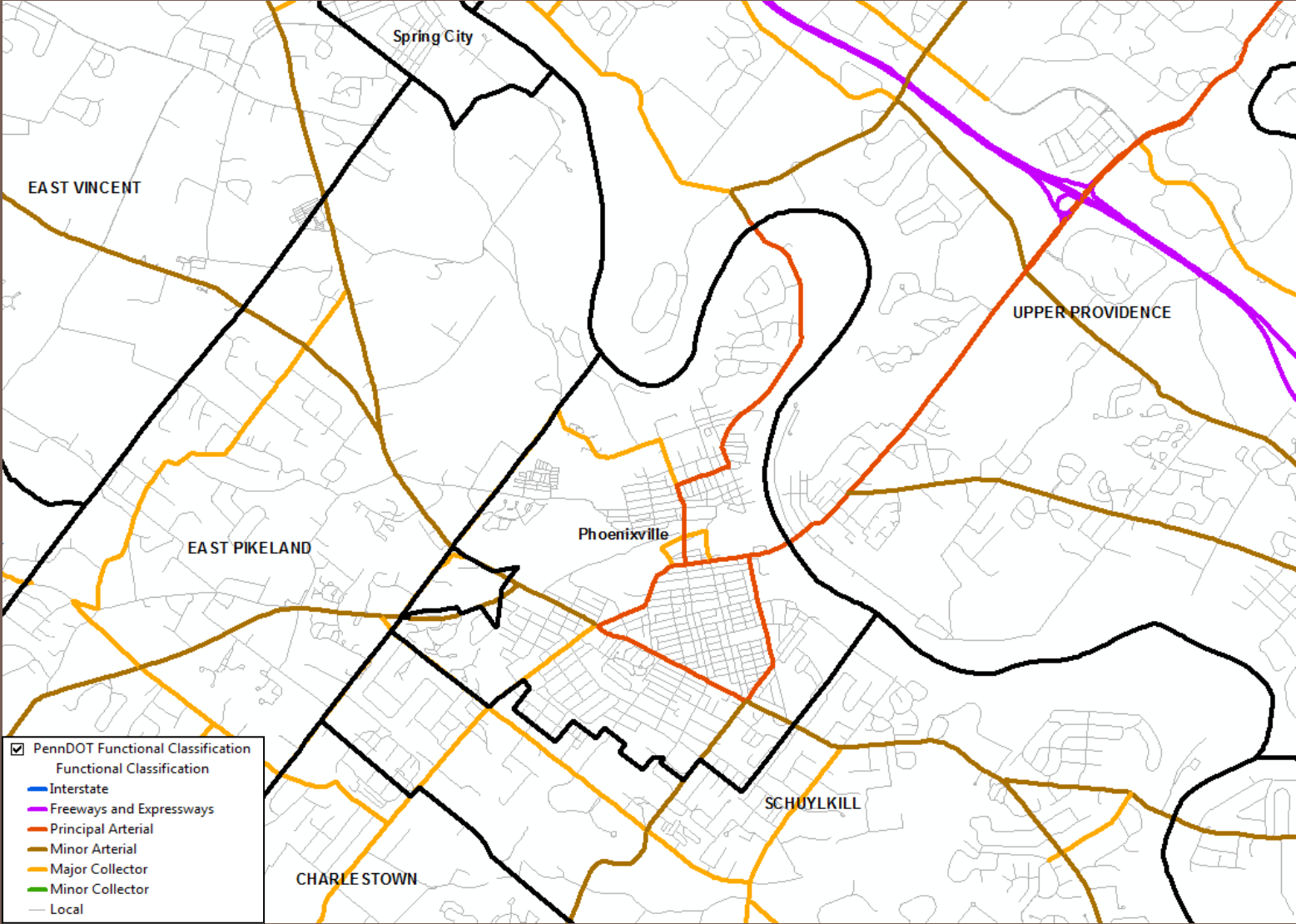
FEDERAL FUNCTIONAL CLASS SYSTEM CHANGES

French Creek Parkway, Chester County
and
Evans Road, Montgomery County

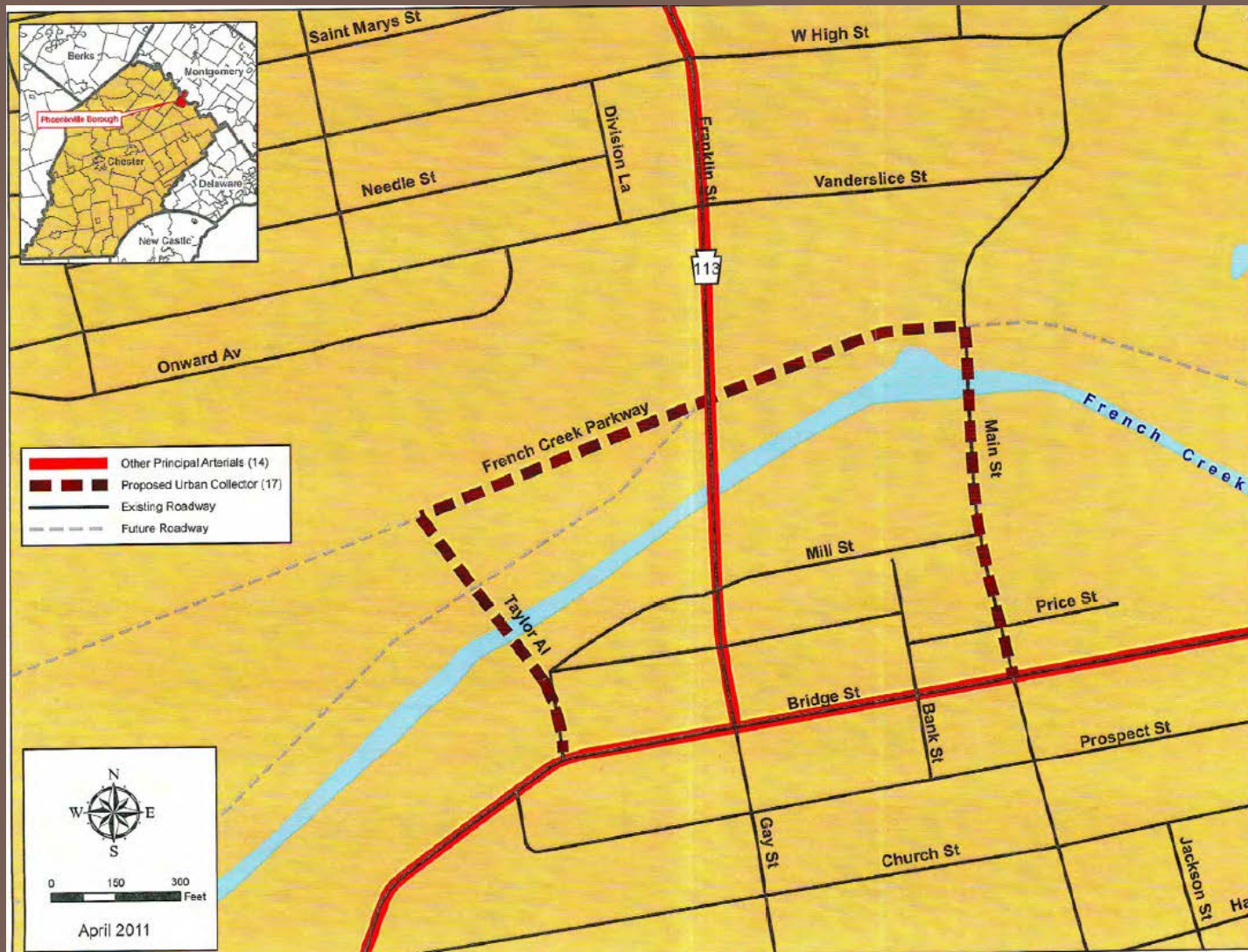
May 9, 2017
RTC Meeting

Matthew T. Gates

Phoenixville Borough



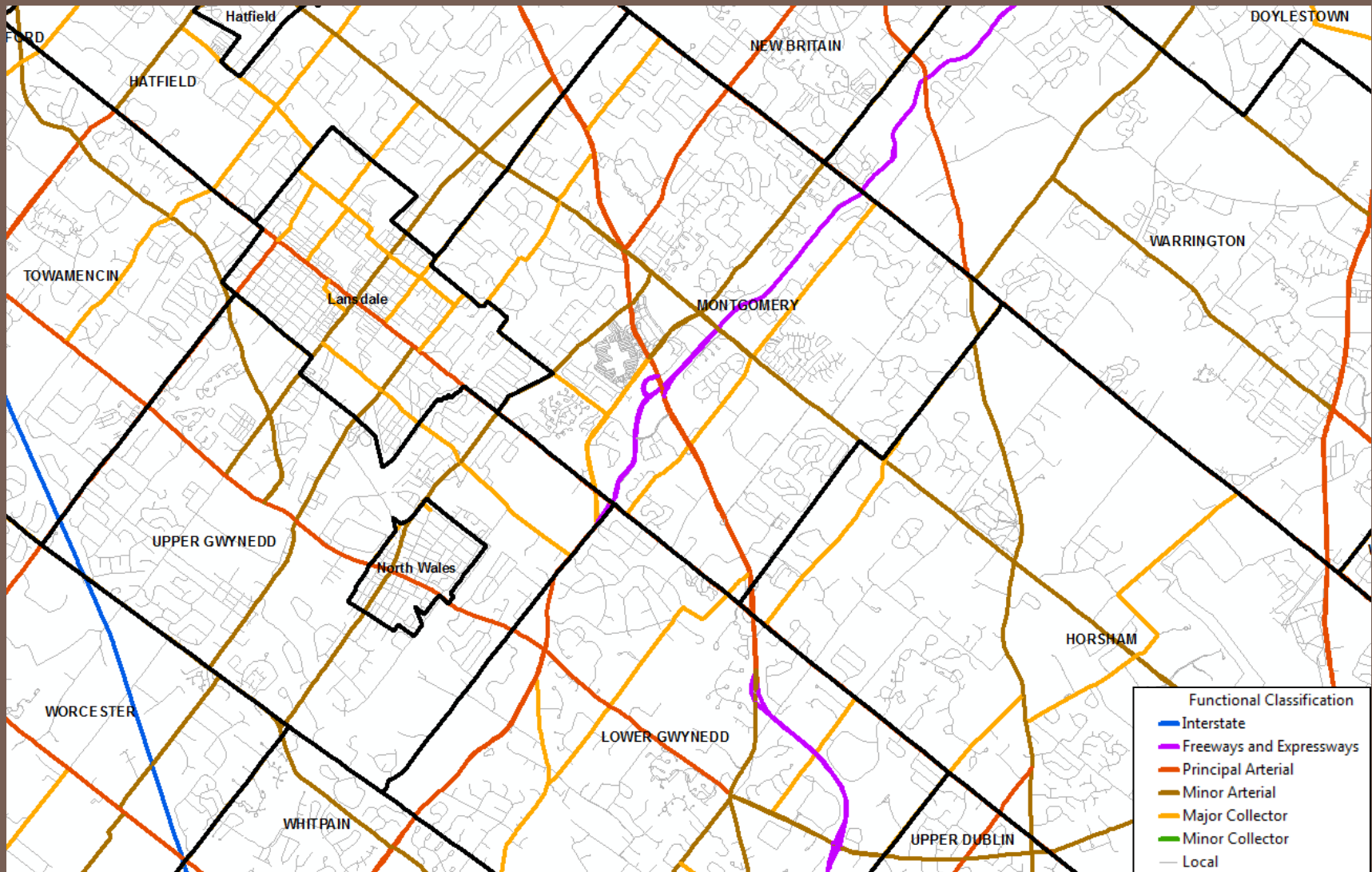
French Creek Parkway



Remove from Federal Aid System

- G651, Segment 0010, French Creek Parkway from Taylor Alley to Main Street, 0.26 miles
- G649, Segment 0010, Main Street from Bridge Street to French Creek Parkway, 0.16 miles
- G650, Segment 0010, Taylor Alley from Bridge Street to French Creek Parkway, 0.13 miles

Montgomery Township



Evans Road



Remove from Federal Aid System

- G690, Segment 0010, Evans Road from PA 63 (Welsh Road) to PA 309 (Bethlehem Pike), 0.25 miles

Action Requested



- That the Board approve the Federal Functional Class changes in Chester County and Montgomery County

FY 2018 Funding Adjustment to
Transportation Management
Association and MAP Contractor
Work Programs

*Presentation to
RTC
May 9, 2017*

Background

- Mobility Alternatives Program (MAP) initiated in 1995 - TMA contractors funded at \$54,000 each (+ 20% required match), no increase since inception
- TMA Assistance Grant Program initiated in 1990, 20% increase in 2006 to current level of \$153,600 (+ 20% required match)
- Funding constraints preclude more
 - Programming
 - Proactive business development
 - Implementation of TDM strategies
 - TDM advocacy during the development process
 - Employer outreach
 - Service to municipalities
 - Communication
 - Visible presence, “being at the table”

PA TMA Policy Committee

- Reps from county planning commissions, OTIS, PennDOT, SEPTA, FHWA, staffed by DVRPC
- Seeks to re-examine tasks and performance measures, and consider formula funding with incentives (rather than current flat rates)
- Re-examination takes place over next 6 months, with aim for new guidance for FY19-20 Work Programs (7/1/18-6/30/20)
- To address more immediate need, one-year interim solution for funding adjustments for 7/1/17-6/30/18 devised

One-Year, Interim Proposal

<u>TMA/MAP Contractor</u>	<u>Funding Adjustment</u>	<u>Match</u>
Bucks County TMA	\$26,000	\$6,500
Delaware County TMA	\$26,000	\$6,500
GVFTMA	\$26,000	\$6,500
Partnership TMA	\$26,000	\$6,500
TMACC	\$26,000	\$6,500
Central Phila TMA	\$11,500	\$2,875
SEPTA	\$12,000	\$3,000
Clean Air Council	<u>\$16,500</u>	<u>\$4,125</u>
Total	\$170,000 (CMAQ)	\$42,500

Action Proposed

Summary – recommend that the Board approve a one-year interim solution for funding adjustments for 7/1/17-6/30/18 totaling \$170,000 in CMAQ funds

Recommend that the Board approve the TMA Policy Committee's one-year interim solution for funding adjustments for the time period 7/1/17 – 6/30/18; and to modify the PA TIP by increasing the MAP program by \$35,625 (\$28,500 CMAQ/\$7,125 Local) and the TMA Assistance Grant program by \$176,875 (\$141,500 CMAQ/\$35,375 Local)



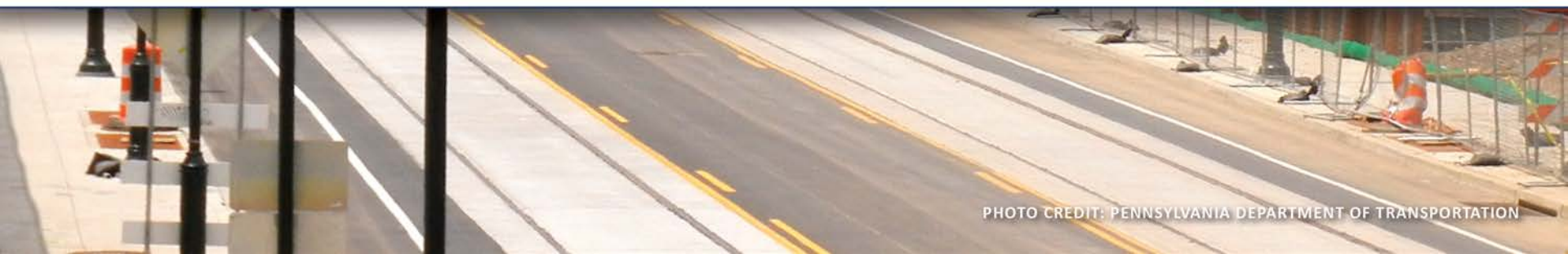
TIP Actions

Transportation Improvement Program

New Jersey TIP (FY2016-2019)

Pennsylvania TIP (FY2017-2020)

May 2017



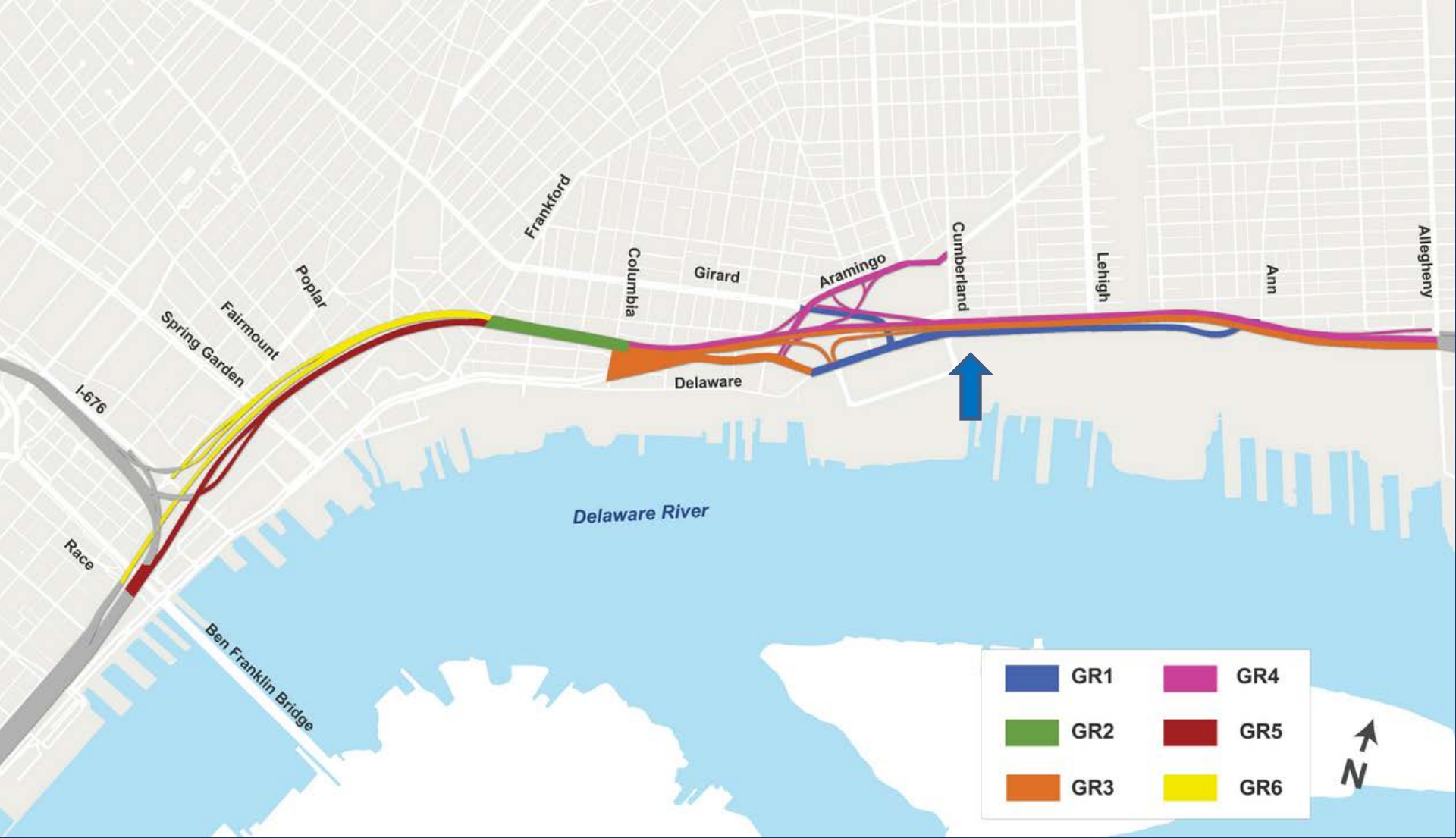
I-95, Columbia Avenue to Ann Street (GR1)

City of Philadelphia

Add UTL and ROW Phases Back into the TIP

- ▶ **Action Type:** TIP Amendment
- ▶ **Action:** Add UTL and ROW phases back into the TIP, totaling \$12,100,000 NHPP/Toll Credit Match, accordingly:
 - UTL FY17 (\$3,600,000)
 - ROW FY17 (\$4,250,000)
 - ROW FY18 (\$4,250,000)Overall project cost would increase from \$4,171,000 to \$16,271,000.
- ▶ **Reasons:**
 - Accrued Unbilled Costs for UTL and ROW related work





Source: www.95revive.com

TIP Action | Proposed – PA

Amend the PA TIP for the Following Project:

a. I-95, Columbia Avenue to Ann Street (GR1), City of Philadelphia

Amend the TIP by adding UTL and ROW phases back into the TIP, totaling \$12,100,000 NHPP/Toll Credit Match, accordingly:

- UTL FY17 (\$3,600,000)
- ROW FY17 (\$4,250,000)
- ROW FY18 (\$4,250,000)

Overall project cost would increase from \$4,171,000 to \$16,271,000.

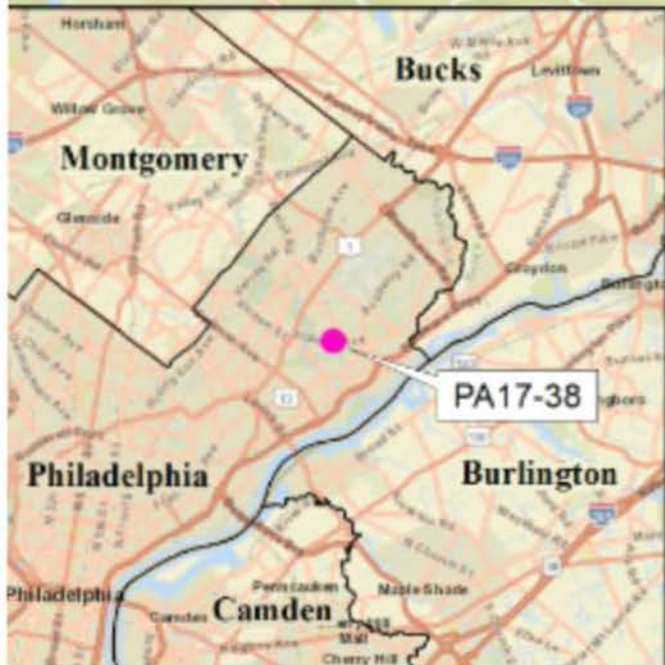
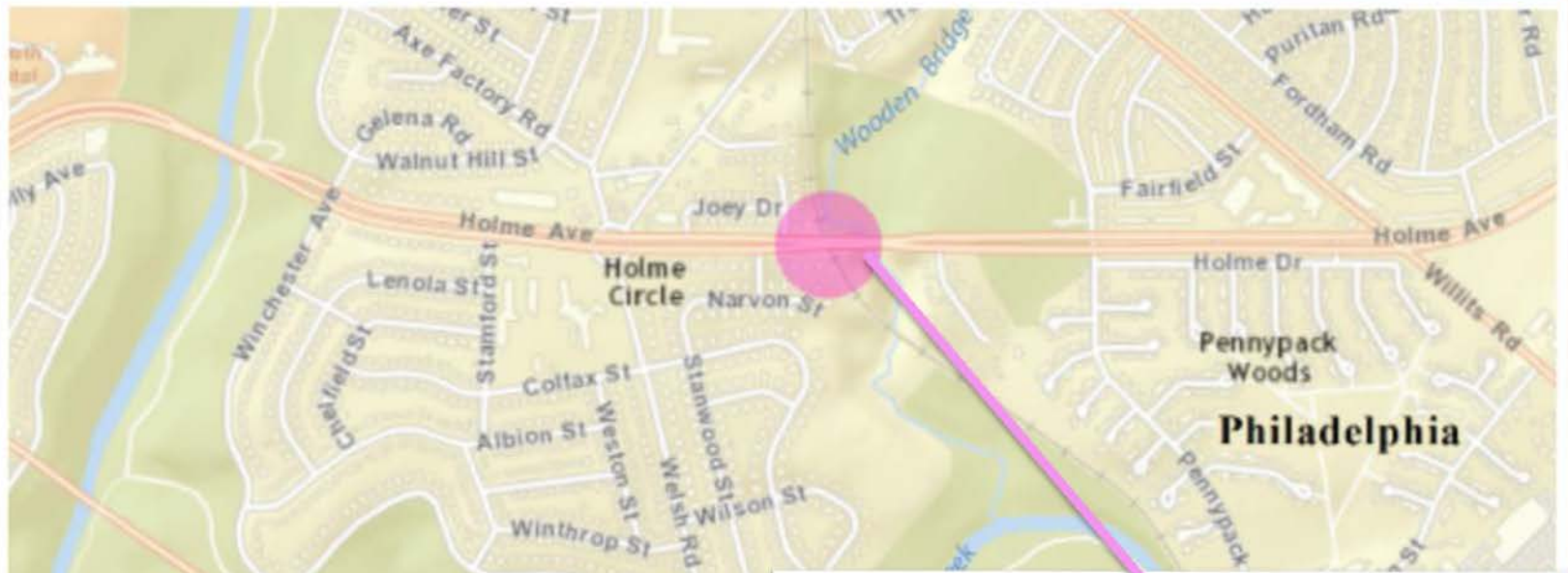


Holme Avenue over Wooden Bridge Run

City of Philadelphia | Federalize Project

- ▶ **Action Type:** TIP Amendment
- ▶ **Action:** Add a new \$20,000 (**STP** BOE/Toll Credit Match) FY17 FD phase, in order to federalize the project.
- ▶ **Reasons:**
 - Meet accelerated let schedule (June 2017)
 - Section 106 environmental review process issues
- ▶ Updated PennDOT FCCs since RTC packet distribution due to change in Holme Avenue:
 - #072-A (New!)
 - #74
 - #77 (New!)





Source: Google Earth, 2016

Image Landsat / Copernicus
© 2016 Google



Source: Google Earth, 2016

TIP Action | Proposed – PA

Amend the PA TIP for the Following Project:

b. Holme Avenue over Wooden Bridge Run, City of Philadelphia

Amend the TIP by adding a new \$20,000 (**STP** BOF/Toll Credit Match) FY17 FD phase, in order to federalize the project.



River Road at Golden Pheasant over Delaware Canal

Bucks County | Add New Project to the TIP

- ▶ **Action Type:** TIP Amendment
- ▶ **Action:** Add a new \$6,480,000 bridge project to the TIP, accordingly:
 - FY18 PE (\$680,000 STP/\$170,000 State 185)
 - FY19 FD (\$570,000 State 185)
 - FY19 UTL (\$110,000 State 185)
 - FY19 to FY21 ROW (\$250,000 State 185 total)
 - FY25 CON (\$4,700,000 State 185)







Source: www.goldenpheasant.com



Source: Google Earth, 2016



Source: Chimmy Chunga, Google Earth

TIP Action | Proposed – PA

Amend the PA TIP for the Following Project:

c. River Road at Golden Pheasant over Delaware Canal

Amend the TIP by adding a new \$6,480,000 bridge project to the TIP, accordingly:

- ▶ FY18 PE (\$680,000 STP/\$170,000 State 185)
- ▶ FY19 FD (\$570,000 State 185)
- ▶ FY19 UTL (\$110,000 State 185)
- ▶ FY19 to FY21 ROW (\$250,000 State 185 total)
- ▶ FY25 CON (\$4,700,000 State 185)





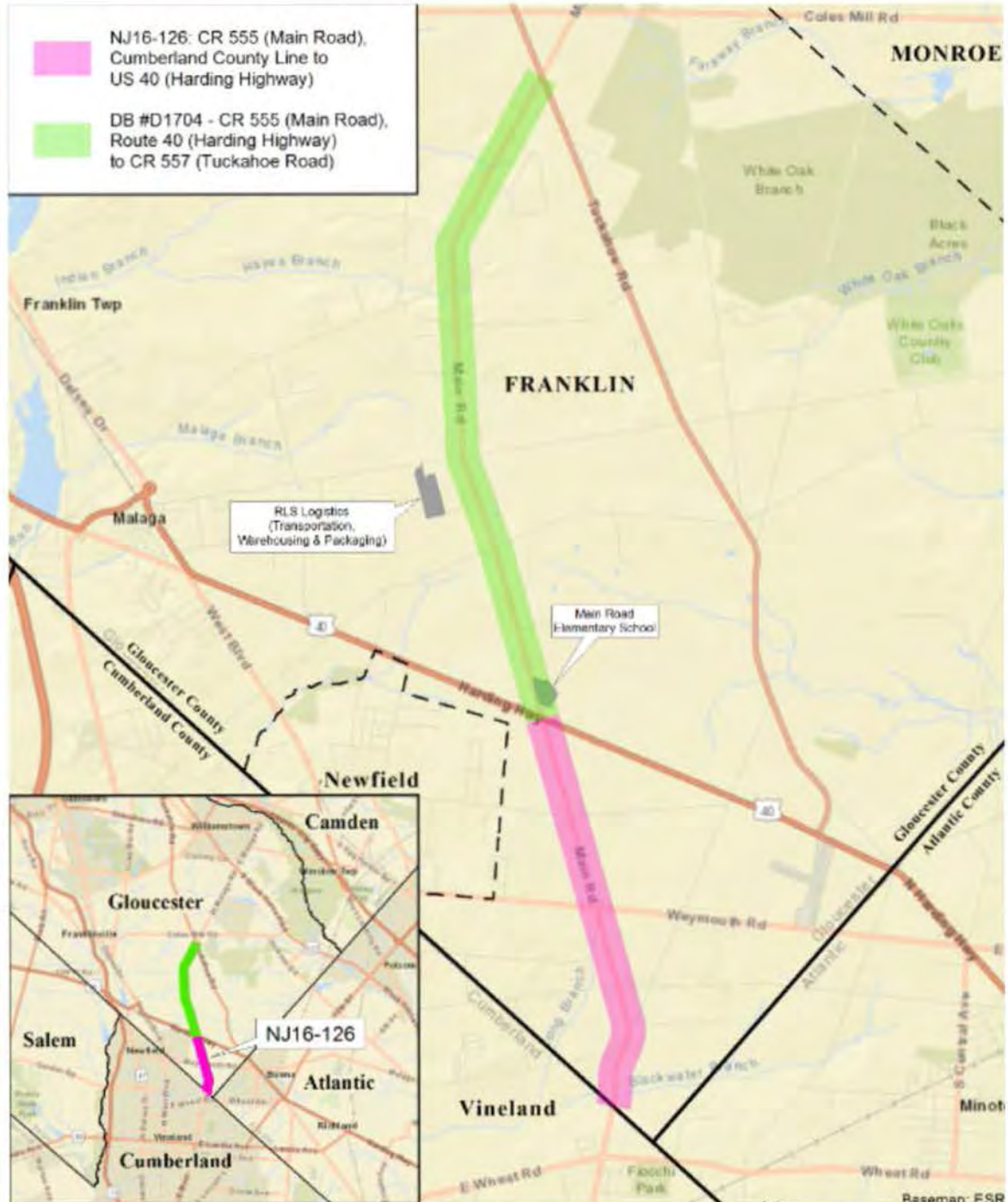
CR 555 (Main Road), Cumberland County line to Route 40 (Harding Highway) Gloucester County | Add New Project to the TIP

- ▶ **Action Type:** TIP Amendment
- ▶ **Action:** Add a new \$2,500,000 STP-STU funded project to the TIP for FY17 CON.
- ▶ **Reason:**
 - Additional obligation authority from NJDOT to DVRPC (additional funds to the region for FY17)
 - Project can realistically submit final PS&E package to Local Aid by July 1st.

**Project will not stay on the TIP,
if it misses FY17 authorization deadline.**



-  NJ16-126: CR 555 (Main Road), Cumberland County Line to US 40 (Harding Highway)
-  DB #D1704 - CR 555 (Main Road), Route 40 (Harding Highway) to CR 557 (Tuckahoe Road)

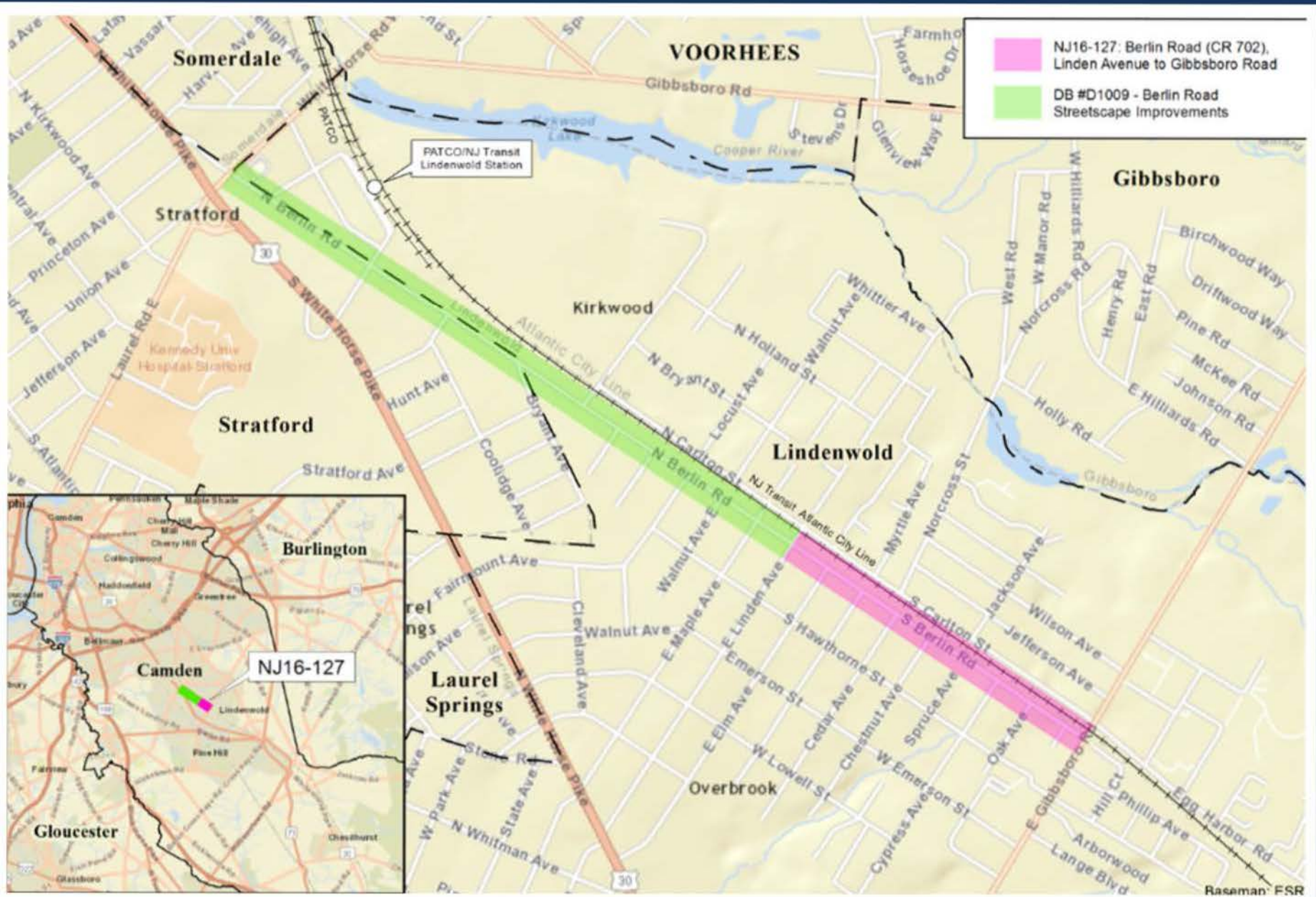


Berlin Road (CR 702), Linden Avenue to Gibbsboro Road Camden County | Add New Project to the TIP

- ▶ **Action Type:** TIP Amendment
- ▶ **Action:** Add a new \$471,000 TAPR funded project to the TIP for FY17 CON.
- ▶ **Reasons:**
 - Additional obligation authority from NJDOT to DVRPC (additional funds to the region for FY17)
 - Project can realistically submit final PS&E package to Local Aid by July 1st.

**Project will not stay on the TIP,
if it misses FY17 authorization deadline.**





Completed Streetscape Improvements under DB #D1009 Berlin Road at Maple Avenue Intersection



Source: Google Earth, 2016

Arney's Mount Trail, Phase 1

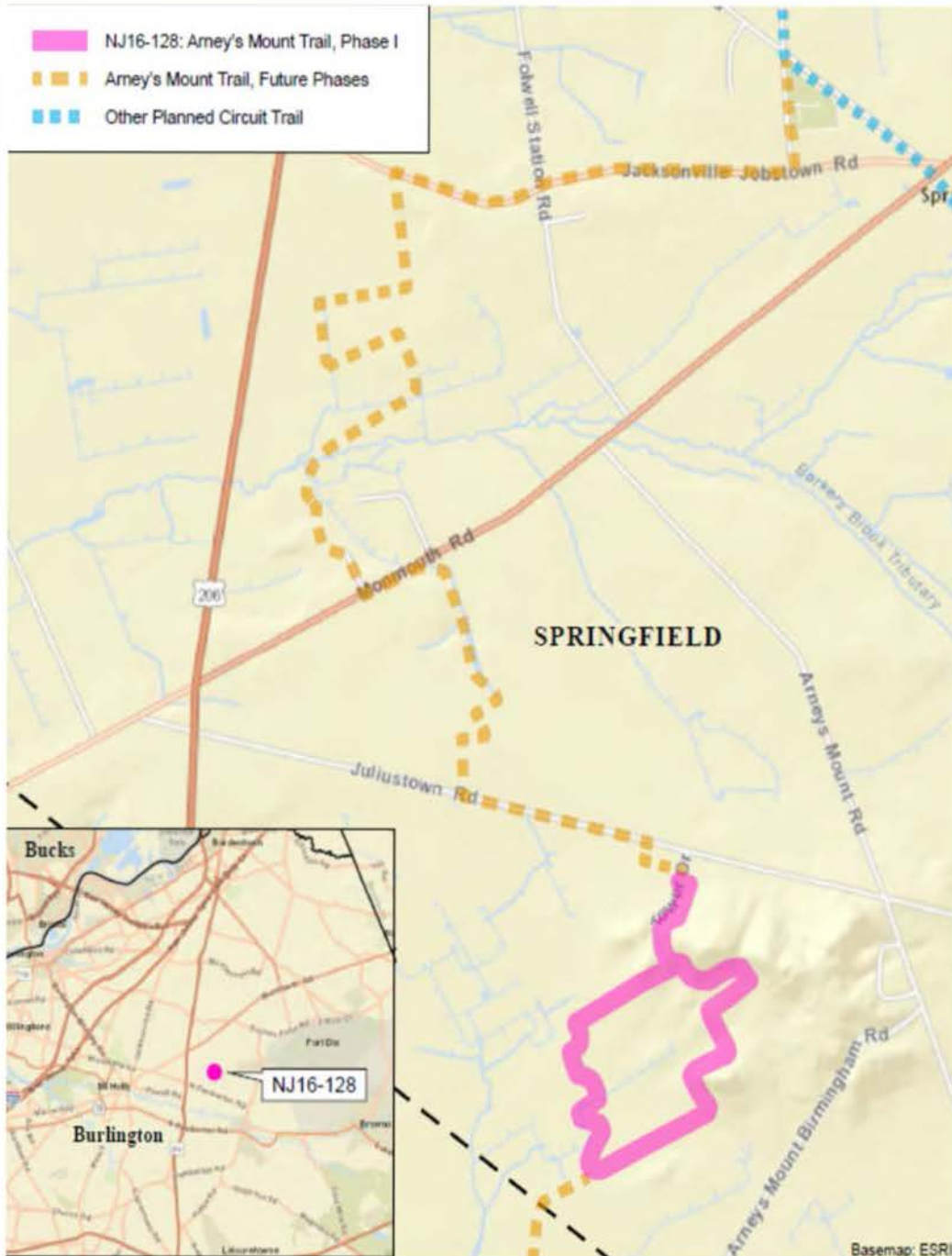
Burlington County | Add New Project to the TIP

- ▶ **Action Type:** TIP Amendment
- ▶ **Action:** Add a new \$3,000,000 TAPR funded project to the TIP for FY17 CON.
- ▶ **Background:**
 - Additional obligation authority from NJDOT to DVRPC (additional funds to the region for FY17)
 - Project can realistically submit final PS&E package to Local Aid by July 1st.

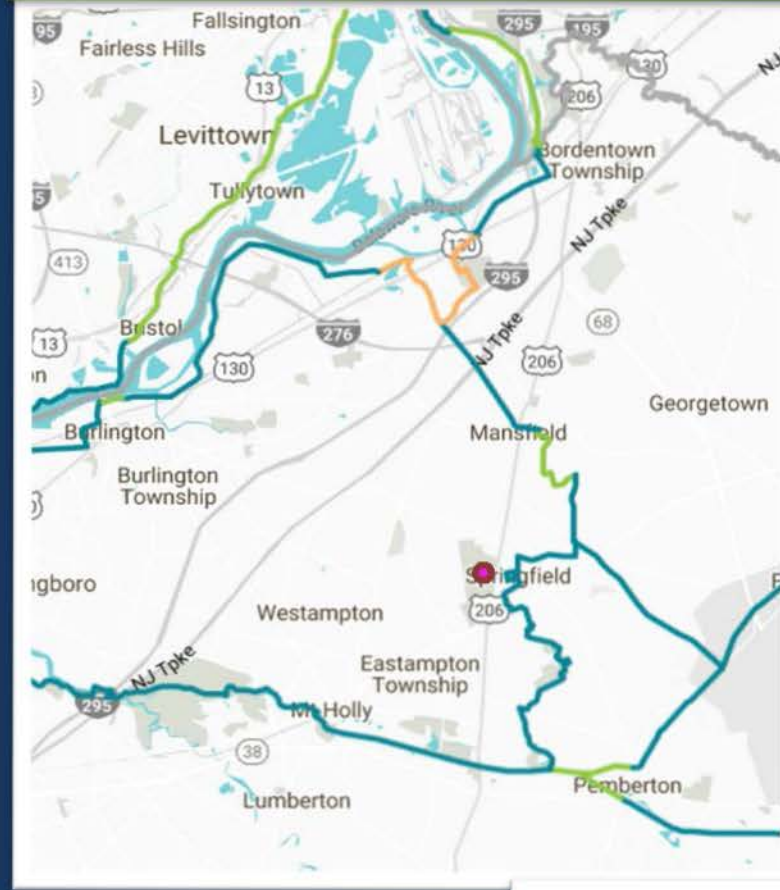
**Project will not stay on the TIP,
if it misses FY17 authorization deadline.**



- █ NJ16-128: Arney's Mount Trail, Phase I
- █ Arney's Mount Trail, Future Phases
- █ Other Planned Circuit Trail



dvrpc THE CIRCUIT TRAILS



Trail Status

- █ Existing
- █ In Progress
- █ Planned

● Arney's Mount Trail

TIP Action | Proposed – NJ

Amend the NJ TIP for the Following Projects:

d. CR 555 (Main Road), Cumberland County line to Route 40 (Harding Highway), Gloucester County

Amend the TIP by adding a new \$2,500,000 STP-STU funded project to the TIP for FY17 CON.

e. Berlin Road (CR 702), Linden Avenue to Gibbsboro Road, Camden County (Lindenwold Borough)

Amend the TIP by adding a new \$471,000 TAPR funded project to the TIP for FY17 CON.

f. Arney's Mount Trail, Phase 1, Burlington County

Amend the TIP by adding a new \$3,000,000 TAPR funded project to the TIP for FY17 CON.

These are additional funds to the region for FY17.



Transportation
Improvement
Program

TIP

Thank You!

www.dvrpc.org/TIP