



CMP Update

DVRPC RTC
May 6, 2014

The graphic features a light blue background with a white horizontal band. On the left, there are four quadrants: top-left shows a grid of black and white rectangles; top-right shows a road with dashed lines; bottom-left shows a road with a bicycle symbol and green circles; bottom-right shows a blue arrow pointing right. The text 'CMP Overview' is centered in the white band.

CMP Overview

- Strengthens the connection between the Plan & the TIP
- Performs analysis of the regional transportation network, identifies congested corridors & multimodal strategies
- Evaluates anticipated & experienced effectiveness of strategies
- Where SOV capacity is being considered, coordinates as required



Start of Fourth Update

- Draft methodology discussed with CMP Advisory Committee
- Data sources white paper
- Draft revised criteria
- Initial analysis



Archived Operations Data

- Probes=GPS, cell phone, and other mobile sources
- Provides travel speed and travel time by segment
- Covers limited access highways and most arterials
- Source: I-95 Corridor Coalition's Vehicle Probe Project (VPP)
- Data and easy-to-use interface available free to Board member agencies



Request

- Would you help us keep Board members appropriately informed so they are comfortable when it comes time to adopt the CMP?
 - How much does the RTC want to know (additional participants in the CMP Advisory Committee are welcome)?
 - How much does your Board member want to know?

Thanks!



For more information, please contact:

Zoe Neaderland, Manager
Office of Transportation Safety & Congestion Management
(215) 238-2839
ZNeaderland@dvrpc.org
www.dvrpc.org/CongestionManagement

Requested Action

Staff requests recommendation for authorization to open a minimum 30-day public comment period for the purpose of gathering public and agency comments for:

- The amendments to the *Connections 2040* Long-Range Plan,
- Draft FY 2015 TIP for Pennsylvania, and
- The Draft Conformity Determination of the *Connections 2040* Long-Range Plan, FY 2014 TIP for New Jersey, and FY 2015 TIP for Pennsylvania;

to issue proper public notifications; to publish the draft documents of the respective TIPs and conformity findings on the internet; to make copies available at certain public libraries; and to hold public meetings.



Multimodal Transportation Fund

May 6, 2014

***David J. Bratina
Office of Multimodal Transportation
Central Office – Keystone Building***



Program Overview

- Multimodal Transportation Fund
 - Established by Transportation Act 89
 - Passed by the Legislature and signed by the Governor into law in November, 2013
 - Increase funding for transportation by \$2.3 Billion additional funding by year 5
 - Addresses all modes of transportation
 - State Roads/Bridges \$1.3 billion
 - Public Transportation \$480 million
 - Local Roads and Bridges \$237 million
 - PA Turnpike Expansion Projects \$ 86 million
 - **Multimodal Transportation Fund** **\$144 million**
 - Dirt/Gravel/Low-Volume Roads \$ 30 million

Funding

- Funding
 - Divided between PennDOT and Commonwealth Finance Authority (DCED)
 - Approximately \$ 60 million available in FY 2014-15
 - Approximately \$ 98 million available in FY 2015-16
 - Approximately \$ 98 million available in FY 2016-17
 - Approximately \$102 million available in FY 2017-18

Funding

	FY 2014-15	FY 2015-16
CFA / DCED	\$ 39.7 million	\$ 58.5 million
PennDOT (multimodal)	\$ 20.0 million	\$ 5.0 million
PennDOT (highway- bridge)	\$ 0	\$ 35.0 million
Totals	\$ 59.7 million	\$ 98.5 million

Commonwealth Finance Authority / DCED

- Program jointly administered by DCED and PennDOT staff
- Applications accepted until June 20, 2014
- Program Guidelines and Application for Assistance is available:
 - www.newpa.com/find-and-apply-for-funding/multimodal-transportation-fund
- Applications located at www.esa.dced.state.pa.us.
- Decisions by September 9, 2014 CFA Board Mtg.

▶ PennDOT Discretionary

- Administered by PennDOT – Office of Multimodal Transportation
- Applications accepted until June 30, 2014
- Program Guidelines and Applications are available:
 - www.dot.state.pa.us, (Multimodal Transportation tab)
- Applications and attachments are to be submitted to: RA-PDMultimodalfund@pa.gov
- Decisions by 4th Qtr. 2014

Eligible Applicants

- Municipalities
- Councils of Government
- Businesses or Non-Profits
- Economic Development Organizations
- Public Transportation Agencies
- Ports or Rail/Freight Entities

▶ Eligible Projects

- Projects which coordinate local land use with transportation assets to enhance existing communities
- Projects related to streetscape, lighting, sidewalk enhancement and pedestrian safety
- Projects improving connectivity or utilization of existing transportation assets
- Projects related to transit-oriented development

▶ Matching Funds

- Matching Funds Requirement
 - Local match shall be not less than 30% of project costs
 - Shall consist of cash contributions only
 - Matching funds need to be secured and documented

- Grants
 - Total project cost of at least \$100,000
 - Total project cost not to exceed \$3,000,000

▶ MTF Criteria

- Economic conditions of the region
- Consistency with local, regional, statewide planning
- Benefits to safety and mobility
- Technical and Financial feasibility
- Level of matching investment
- Number and Quality of jobs
- Regional nature of the project
- Project readiness
- Energy efficiency
- Operational sustainability
- Multimodal in nature

▶ Multimodal Transportation Fund

- Again, Application deadline is June 30, 2014
- Questions can be submitted to: djbratina@pa.gov
- Questions?



WORK PROGRAM AMENDMENT

May 6th, 2014

Fang Yuan, Ph.D.

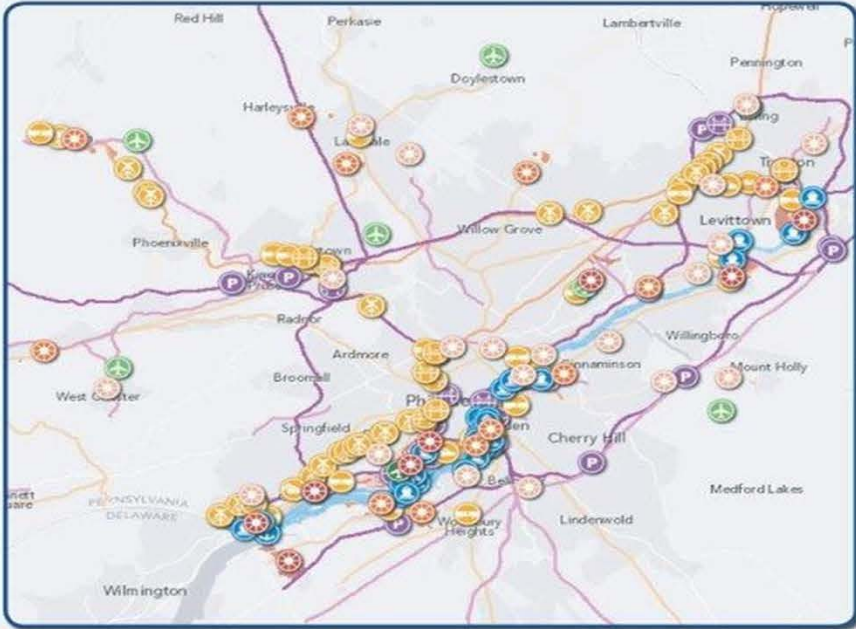
SHRP2 C20

- SHRP2 focuses on applied research in **Safety, Renewal, Reliability, Capacity**
- SHRP2 develops recommended procedures, practices, and applications
- C20 - freight demand modeling and data improvement
 - ▣ 13 recognized research initiatives
 - ▣ 7 implementation assistance awards for freight data improvement pilot



DVRPC Freight Data and Mapping Tool

PHILLY FREIGHT FINDER
FREIGHT MAPPING & DATA PLATFORM FOR THE DELAWARE VALLEY
AVAILABLE AT: www.dvrpc.org/webmaps/phillyfreightfinder
dvrpc
REGIONAL PLANNING COMMISSION



Why a web map?

- Unique regional tool
- Public access to data
- Improve region-wide data-sharing
- Better identify & justify funding priorities

Application is an integrated system that allows for exploration on various levels, including links to existing reports

What kind of data?

Standard Data
To build consistency in the information about facilities throughout the region

- Name
- Size
- Owner
- Municipal
- Operator
- Location

Indicators
To better understand the use and role of facilities in the larger regional system

- Capacity
- Related Reports
- Activity

Standard data and indicators establish a framework for creation of performance measures and an improved DVRPC counting program

Trucking/Highways

- Freeway (Interstate + Limited Access)
- Truck Parking
- NHS Connector
- Highway River Crossing

Freight Rail

- Rail Lines (Interstate + Secondary + Industrial)
- Class 1 Grade Crossing
- Rail Yard
- Intermodal Rail Yard
- Rail River Crossing

Ports/Waterways

- River (Delaware + Schuylkill)
- Anchorage
- Port Terminal

Airports

- Commercial
- Reliever
- Heliport

Freight Centers

- Mega Center
- Major Center
- Intermediate Center

Pipelines

- Pipeline

Communities

- Freight as a Good Neighbor

For more information contact:

Ted Dahlburg, DVRPC p. (215) 238-2844 e. tdahlburg@dvrpc.org	Michael Ruane, DVRPC p. (215) 238-2888 e. mruane@dvrpc.org
--	--

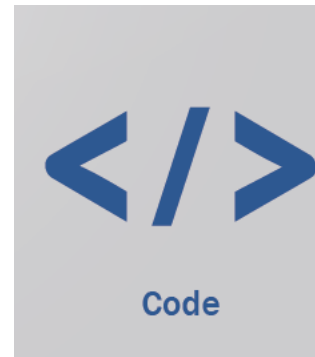
SHRP2 - Innovative Local Freight Data

Work Plan:

- Develop a data collection plan
- Establish a core freight database
- Enhance *PhillyFreightFinder*
- Develop open source products
- Develop project reports & experience sharing

Cost / Timeline:

- \$150,000 / 12 months



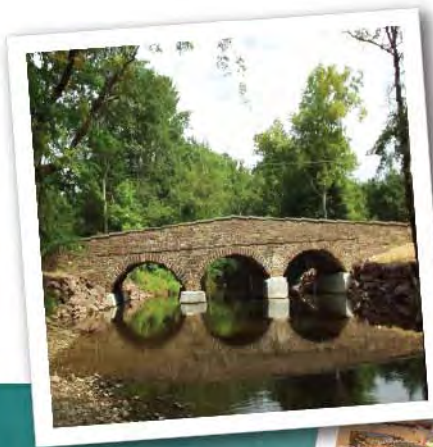


May 2014

★ TIP A-C-T-I-O-N-S

Transportation Improvement Program

New Jersey (FY2014-2017)
Pennsylvania (FY2013-2016)



DELAWARE VALLEY
dvrpc
REGIONAL
PLANNING COMMISSION

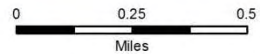
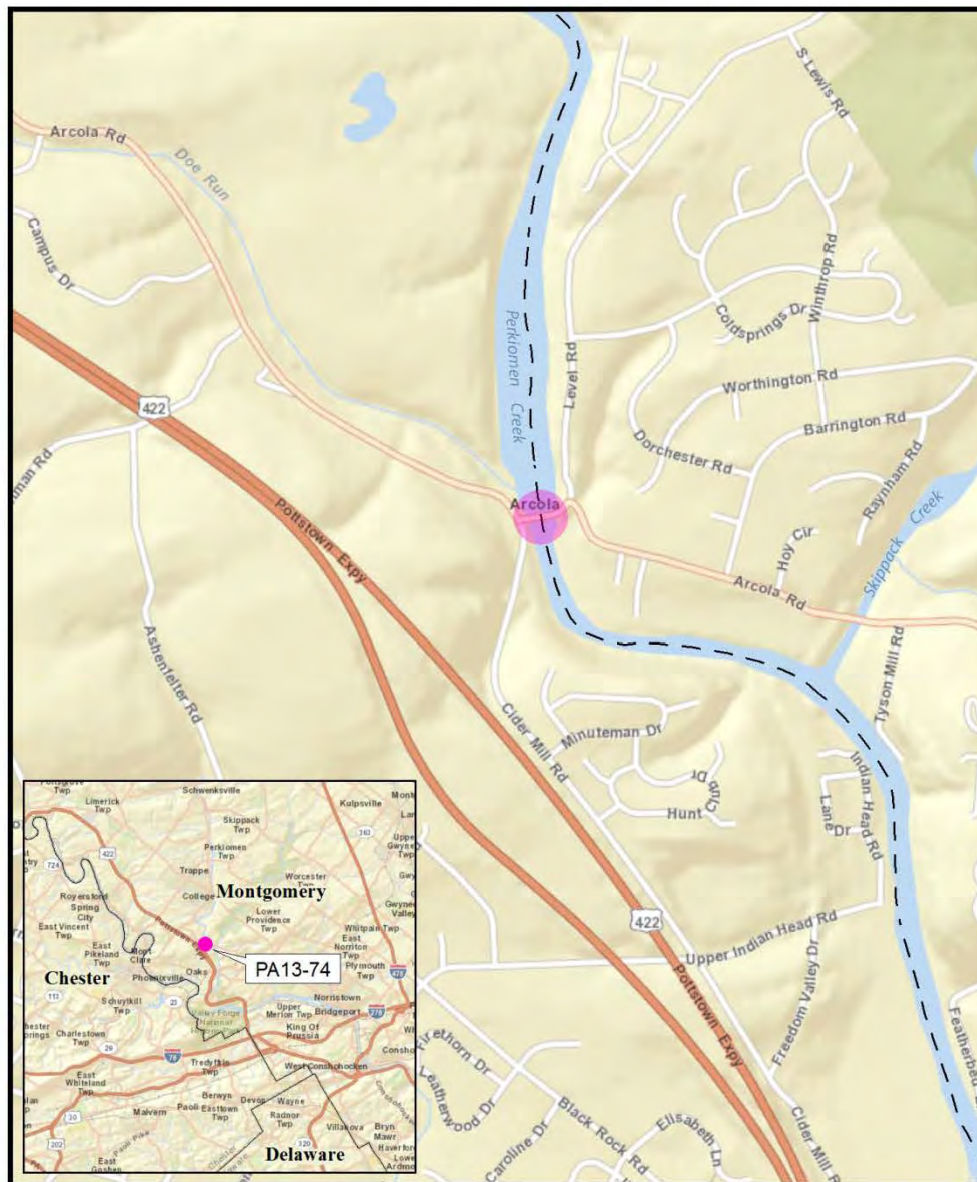


Advance Construction - PA

- a. Arcola Road Bridge over Perkiomen Creek (CB #155), Montgomery County
 - ❖ *Modify the TIP for PA by advancing the \$7,531,000 construction phase from FY17 to FY14*
 - ❖ *Add \$7,531,000 CON phase: \$4,938,000 (\$3,950,000 BOF/ \$740,000 State 183/ \$248,000 Local) in FY14 and \$2,062,000 (\$1,650,000 BOF/ \$309,000 State 183/ \$103,000 Local) in FY15.*
 - ❖ *Arcola Road Bridge was closed in August 2013 and there is a 4 mile detour route*
 - ❖ *Funding for this project contributes to replacing the Arcola Road Bridge with a new two-lane bridge that will have a sidewalk on at least one side. The bridge links Lower and Upper Providence Townships.*



PA13-74: Arcola Road Bridge Over Perkiomen Creek





Courtesy of *The Times Herald*

a. Arcola Road Bridge over Perkiomen Creek (CB #155), Montgomery County

Modify the TIP for PA by advancing the \$7,531,000 construction phase from FY17 to FY14 and FY15:

- \$4,938,000 (\$3,950,000 BOF/ \$740,000 State 183/ \$248,000 Local) construction phase in FY14 and a \$2,062,000 (\$1,650,000 BOF/ \$309,000 State 183/ \$103,000 Local) construction phase in FY15.



Approve and Add New ARLE Round 4 Projects - PA

b. Approval of ARLE Round 4 (2013 funding) Projects, Various Counties

- ❖ *Approve 17 projects that were selected as part of PennDOT's Automated Red-Light Enforcement (ARLE) Program Round 4 and amend the TIP by adding the selected projects in FY14, as well as modify the TIP by adding \$1,400,000 State Appropriation 244 funds to a previously awarded ARLE Round 3 project, Philadelphia Safety Improvements (MPMS #97990), for FY14 construction.*
- ❖ *The region was awarded a total of \$7,833,000 State 244 funds for 17 projects:*
 - *\$415,000 for Bucks County.*
 - *\$1,245,000 for Chester County.*
 - *\$514,000 for Delaware County.*
 - *\$526,000 for Montgomery County.*
 - *\$183,000 for a project in both Bucks and Montgomery Counties.*
 - *\$4,950,000 for the City of Philadelphia.*
- ❖ *The ARLE program targets high crash intersections within PA with the implementation of an automated system that records and fines red light running violations, which generates funds. By Committee, PennDOT distributes funds via a grant program. More than 131 applications were submitted by municipalities totaling about \$22.8 million for Round 4 of ARLE that awarded a total of \$8.8 million statewide.*



Approve and Add New ARLE Round 4 Projects - PA

Municipality and Project Type	MPMS #	Total CON Amount (FY14)
BUCKS COUNTY		
SR 313/SR 563 New Traffic Signal	102283	\$160,000
SR 202 (Lower York Road) Traffic Signal Interconnect System	102284	\$165,000
County Line Road Intersection Improvements	102285	\$183,000
SR 132 Traffic Signal Communication System	102288	\$90,000
CHESTER COUNTY		
SR 0100/Temple Road/Glocker Way Adaptive Traffic Control Management	102292	\$51,000
SR 0030 (Lancaster Avenue) Adaptive Signal System Upgrade	102293	\$564,000
SR 0030 (Lancaster Avenue) Adaptive Signal System Installation	102294	\$445,000
Parker Ford Safety Improvements	102295	\$185,000
DELAWARE COUNTY		
SR 202 (Wilmington-West Chester Pike) Adaptive Signal System	102290	\$432,000
SR 0452 (Pennell Road) Corridor Improvements	102291	\$82,000
MONTGOMERY COUNTY		
Spring House Adaptive Signal System	102297	\$346,000
Towamencin Township Signal System Modernization	102298	\$180,000



Approve and Add New ARLE Round 4 Projects - PA

Municipality and Project Type	MPMS #	Total CON Amount (FY14)
PHILADELPHIA		
Traffic Calming Program	102279	\$1,000,000 (\$400,000 for Final Design/ \$600,000 for Construction)
Broad Street Pedestrian Crossing Improvements	102280	\$1,200,000 (\$400,000 Final Design/ \$800,000 Construction)
L.E.D. Street Light Improvement Program	102281	\$850,000 (\$260,000 Final Design/ \$590,000 Construction)
School House Lane/Kelly Drive Anti-Skid Pavement Surfaces	102282	\$500,000
Philadelphia Safety Improvements	97790	\$1,400,000 (ARLE Round 4 funds will increase construction in FY14 from \$1,500,000 to \$2,900,000 State 244)

b. Approval of ARLE Round 4 (2013 funding) Projects, Various Counties

Approve 17 projects that were selected as part of PennDOT's Automated Red-Light Enforcement (ARLE) Program Round 4 and amend the TIP by adding the selected projects in FY14, as well as modify the TIP by adding \$1,400,000 State Appropriation 244 funds to a previously awarded ARLE Round 3 project, Philadelphia Safety Improvements (MPMS #97990), for FY14 construction:

- ❖ *\$415,000 for Bucks County.*
- ❖ *\$1,245,000 for Chester County.*
- ❖ *\$514,000 for Delaware County.*
- ❖ *\$526,000 for Montgomery County.*
- ❖ *\$183,000 for a project in both Bucks and Montgomery Counties.*
- ❖ *\$4,950,000 for the City of Philadelphia.*

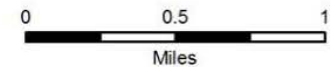
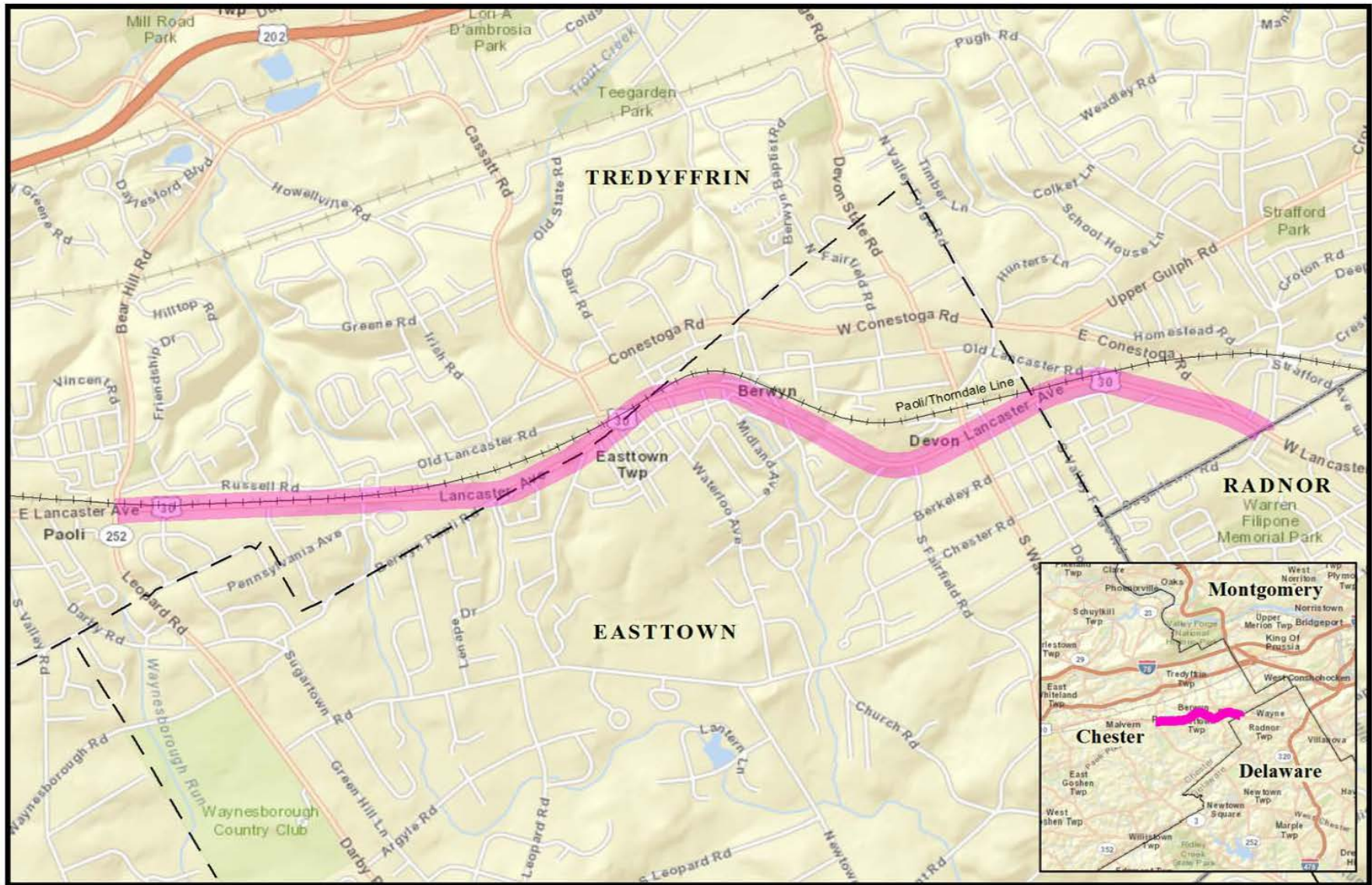
★ Add New Projects - PA

c. Surface Treatment/Resurfacing Projects, Various Counties

- ❖ *Amend the TIP for PA by adding 2 resurfacing projects for FD and CON in FY14 and FY15 in the amount of \$12,670,000 State 581:*
 - *Resurfacing of Rt. 30 (MPMS #102379), Chester County - \$3,650,000*
 - *Roosevelt Boulevard Resurfacing (MPMS #102388), City of Philadelphia - \$9,020,000*
- ❖ *These projects are funded by Additional State A-581 funds provided to the region under Act 89.*
- ❖ *Projects must be let in calendar year 2014 and need to have capital budget approval/authorization.*
- ❖ *Candidates for the Enhanced Resurfacing Program were solicited from PennDOT District Offices throughout the State.*

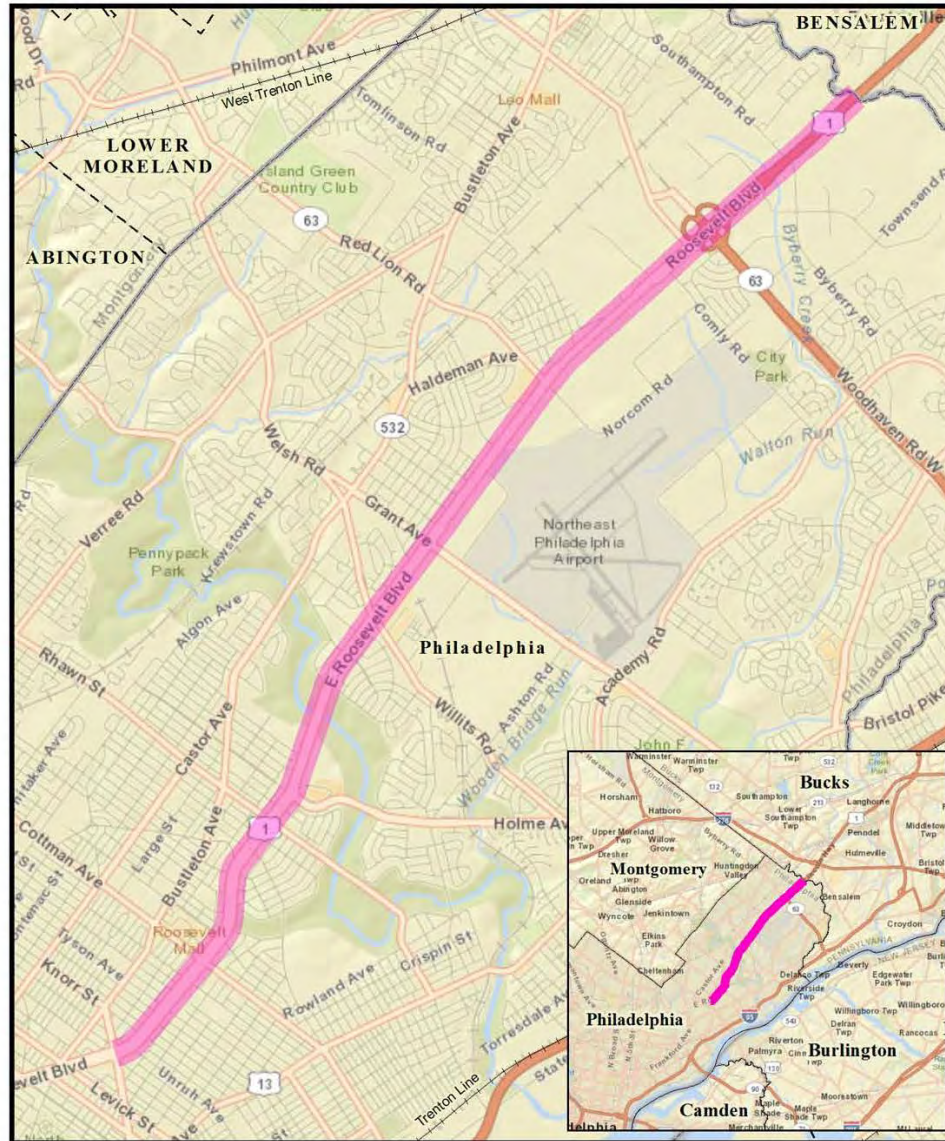
PA13-76: Surface Treatment/Resurfacing Projects

Resurfacing of Route 30 (MPMS #102379)





PA13-76: Surface Treatment/Resurfacing Projects Roosevelt Boulevard Resurfacing (MPMS #102388)



c. Surface Treatment/Resurfacing Projects, Various Counties

Amend the TIP for PA by adding 2 resurfacing projects for FD and CON in FY14 and FY15 in the amount of \$12,670,000 State 581:

- Resurfacing of Rt. 30 (MPMS #102379), Chester County - \$3,650,000
- Roosevelt Boulevard Resurfacing (MPMS #102388), City of Philadelphia - \$9,020,000

These projects are funded by Additional State A-581 funds provided to the region under Act 89.



THANK YOU