



Planning for All



SHOW OF HANDS

Interactive exercise for the room.

Raise your hand if the question applies to you and your experience.

1



Public Health

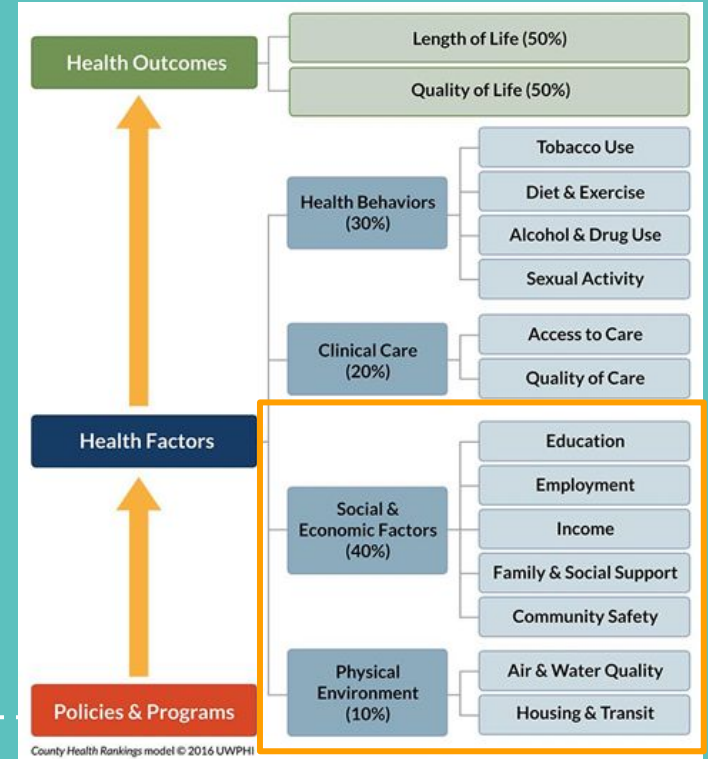
Amy Verbofsky, DVRPC



Why DVRPC does public health:

“ The Social Determinants of Health are conditions in the places where people live, learn, work, and play that affect a wide range of health risks and outcomes. ”

-CDC





How DVRPC does public health:





Benefits:

- Lifts up a lot of our existing work by being explicit about its connection to health
- Engages new partners
- Taps new sources of funding
- Health is very relatable

Challenges:

- Health data can be very hard to obtain at smaller geographies
- Connects to everything so it can be very broad

WHAT do you NEED to be HEALTHY?

(CIRCLE ALL THAT APPLY TO YOU)



CLEAN ENVIRONMENT



JOBS/INCOME



ACCESS TO QUALITY HEALTHCARE



SUPPORTIVE COMMUNITY



AFFORDABLE, HEALTHY FOOD



SAFE GREEN SPACE



PLACES AND TIME TO EXERCISE



EMOTIONAL WELL-BEING



EDUCATION



SAFETY



MOTIVATION TO BE HEALTHY



OTHER: _____

2

Air Quality

Sean Greene, DVRPC





How Does DVRPC do air quality:

- Regulatory Programs
- Cooperative Planning and Funding Programs
- Public Education and Outreach



Connections between planning + air quality:



- **Transportation is responsible for almost 50% of certain emissions in the Greater Philadelphia Area.**
- **Planning for a multimodal transportation system benefits the environment, economy, and promotes equity.**



Benefits:

- Healthier public and environment.
- Less traffic congestion.
- More sustainable transportation strategies.

Challenges:

- Funding availability.
- Land-use, air quality, and transportation are intricately intertwined = complex issues.

3

Philanthropy

Alison Hastings, DVRPC

Why Did DVRPC Start 2 Nonprofits?



Each nonprofit's mission is to support the work of DVRPC and its local government members by finding new sources of funding and offering an alternative organizational structure to conduct projects and programs benefiting region.

- **DVRPC Southeastern Pennsylvania Corporation - Bucks, Chester, Delaware, Montgomery, and Philadelphia counties**
- **DVRPC Foundation for New Jersey, Inc. - Burlington, Camden, Gloucester, and Mercer counties**

Connections between planning + philanthropy:



- A lot of the change or interventions that Philanthropy wants to make is within the **built environment**, **natural environments**, and **decision-making systems** that Planning is intrinsically a part of or works alongside (ex. **Public Health**, **Public Spaces**, **Accessing higher paying jobs**)



Benefits:

- DVRPC and member governments have been approached by several foundations to undertake projects; had no way to accept funds if 501C3 status was required.
- If government funding goes away for an important issue, such as climate change, is a mechanism in place to find funds to keep that work going.

Challenges:

- DVRPC is investing limited resources to create and maintain mechanisms for new funding... results TBD
- DVRPC does not want to compete with direct service providers; does not want to compete with potential partners.

Panel questions

Discussion and questions about planning
practices in other fields





Thank you!

Apply for the PPTF by
December 22nd:

<https://www.dvrpc.org/GetInvolved/PPTFApplication/>