



Updating **Greater
Philadelphia's
Long-Range Plan**

Public Participation Task Force | 03.12.19



CONNECTIONS

2045



Delaware Valley Regional Planning Commission



- Federally-Designated MPO for Nine-County Philadelphia Region in PA and NJ
- Created in 1965 to Plan for the “Orderly Growth and Development” of the Region
- Short, Medium, and Long-Term Transportation Plans Provide Funding for Projects
- Board Members Include States, Counties, Cities, and Transportation Agencies

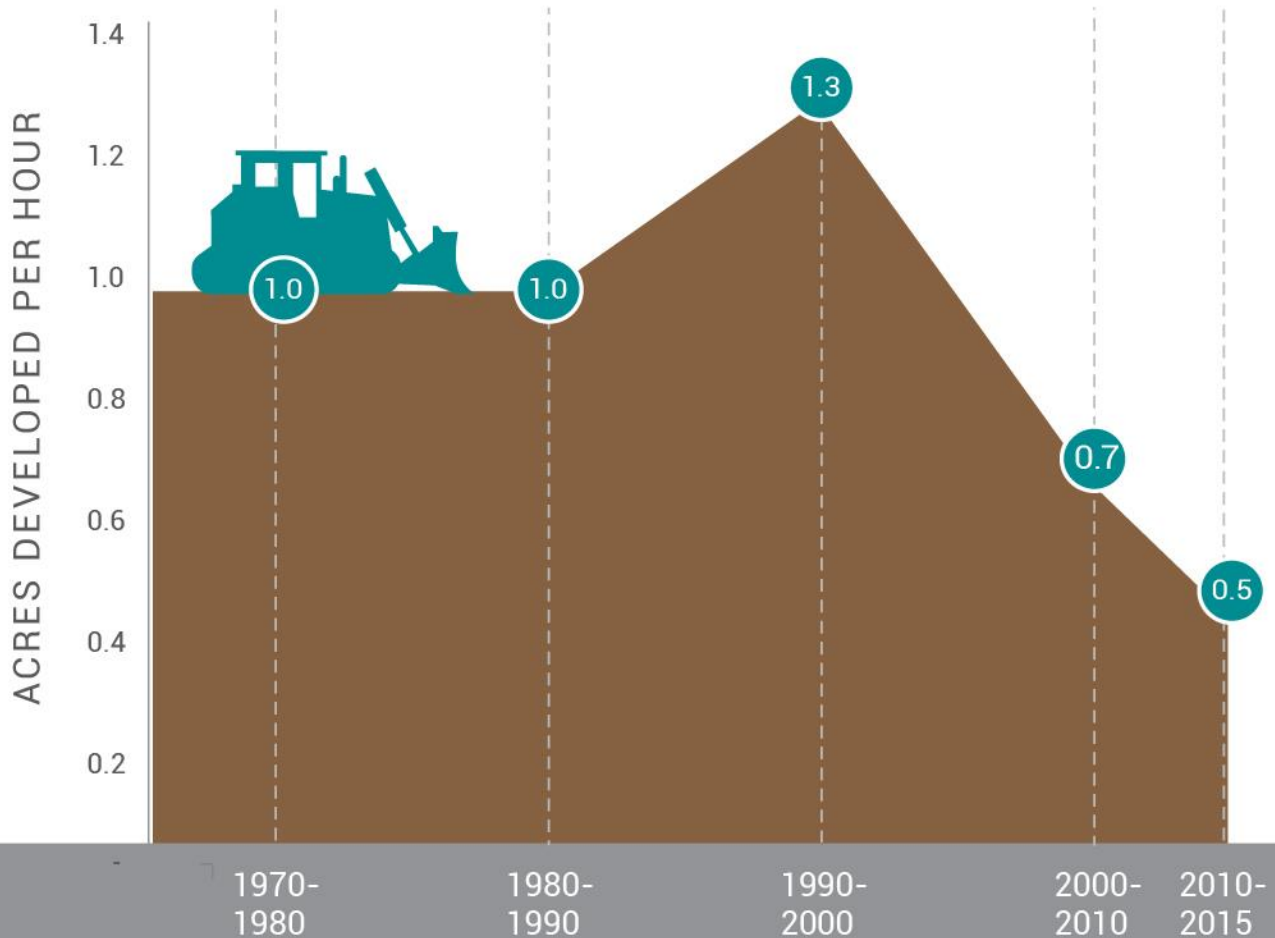
Long-Range Planning



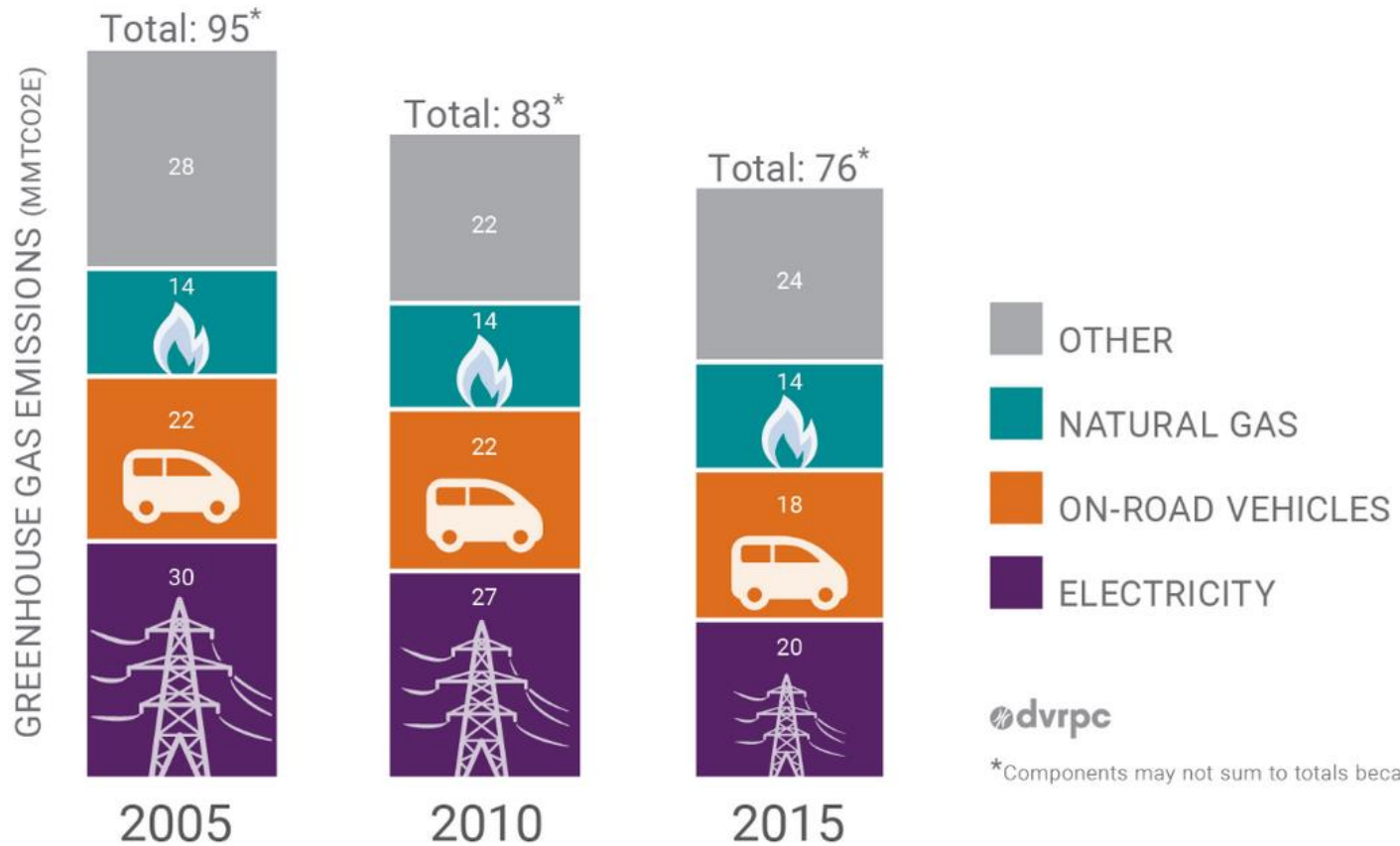
Tracking Progress
Rating the Region
Future Forces Indicators
U.S. DOT Performance Measures



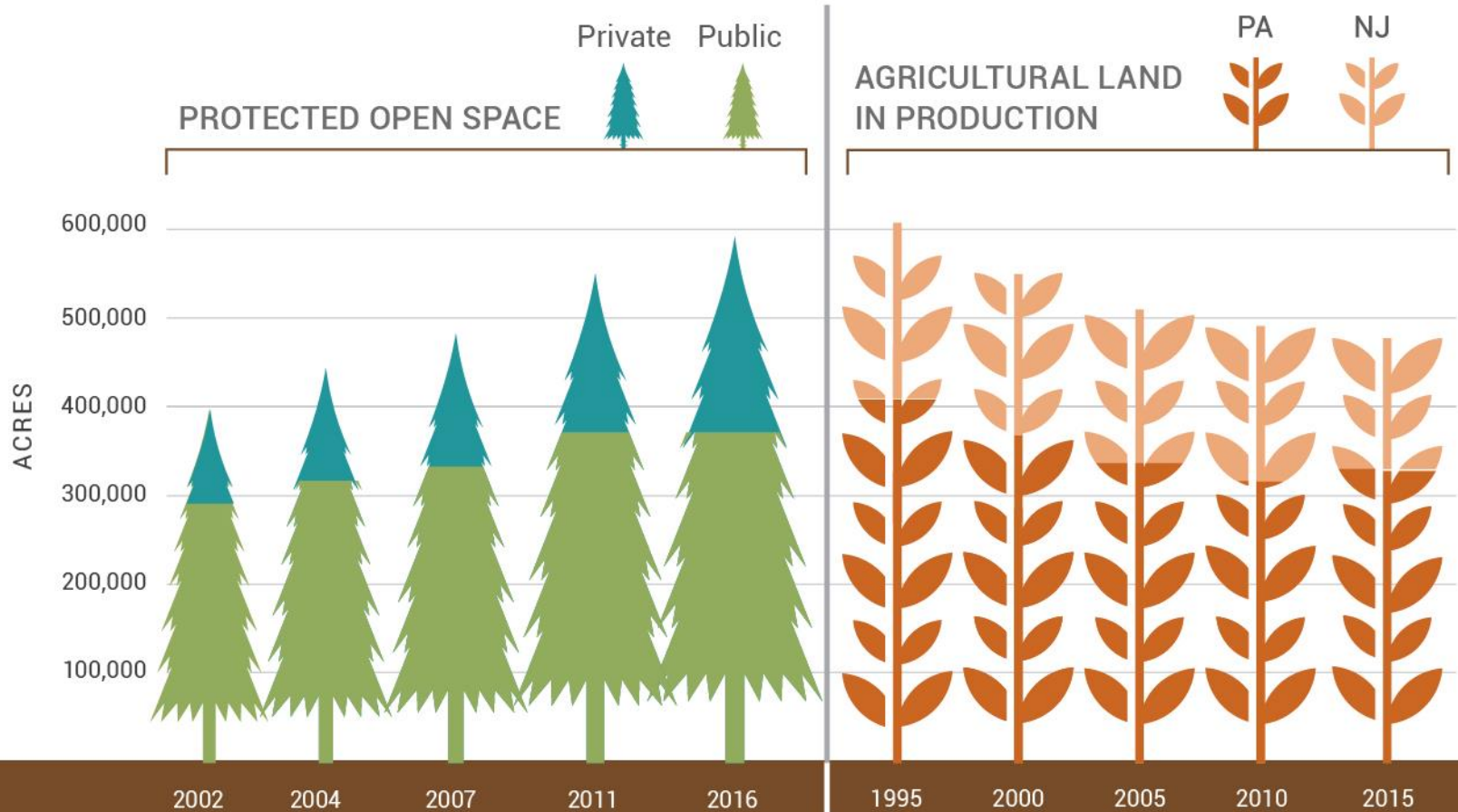
Land Development



Greenhouse Gas Emissions



Open Space and Ag Land



Regional Indicators



#1

An aging population with increasing service and mobility needs.

#2

Disparities between urban and suburban educational attainment and unemployment.

#3

Relatively low expenditures in academic research and development, and venture capital investment.



#1

Diverse economy and extensive highway, transit, aviation, and port facilities.

#2

Rich in healthcare resources.

#3

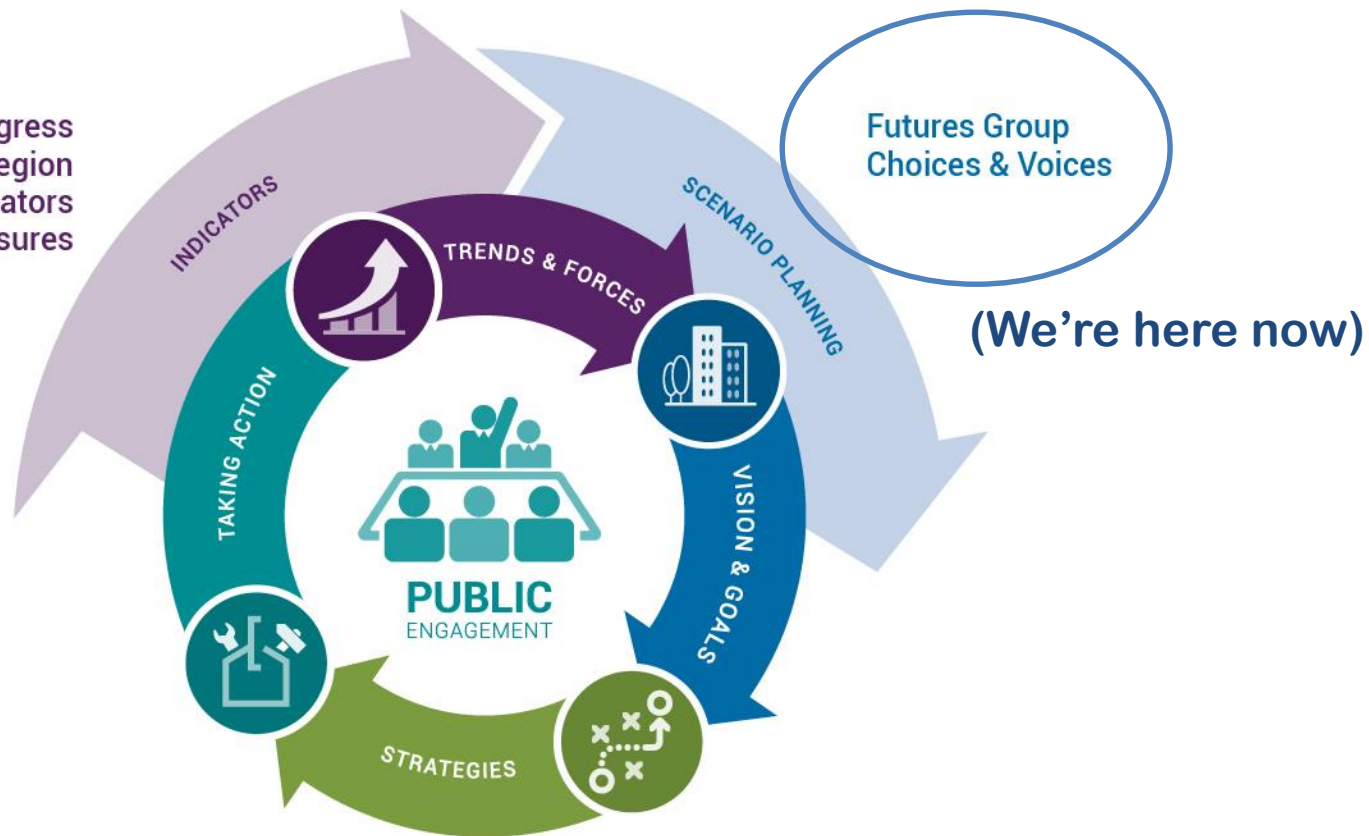
Large number of higher education institutions.



CONNECTIONS

2045

Tracking Progress
Rating the Region
Future Forces Indicators
U.S. DOT Performance Measures





Futures Group

“The only relevant discussions about the future are those where we succeed in shifting the question from whether something will happen to what would we do if it happened.”

Arie de Geus

Shell International Petroleum Company

Future Forces



People and jobs moving to walkable communities is the start of a long-term trend.



Increased outsourcing and automation means individuals must create their own economic opportunities.



Continued rise in atmospheric carbon levels lead to significant disruptions from climate change.



Smartphones, apps, and real-time info help people get around using new and existing transportation modes.

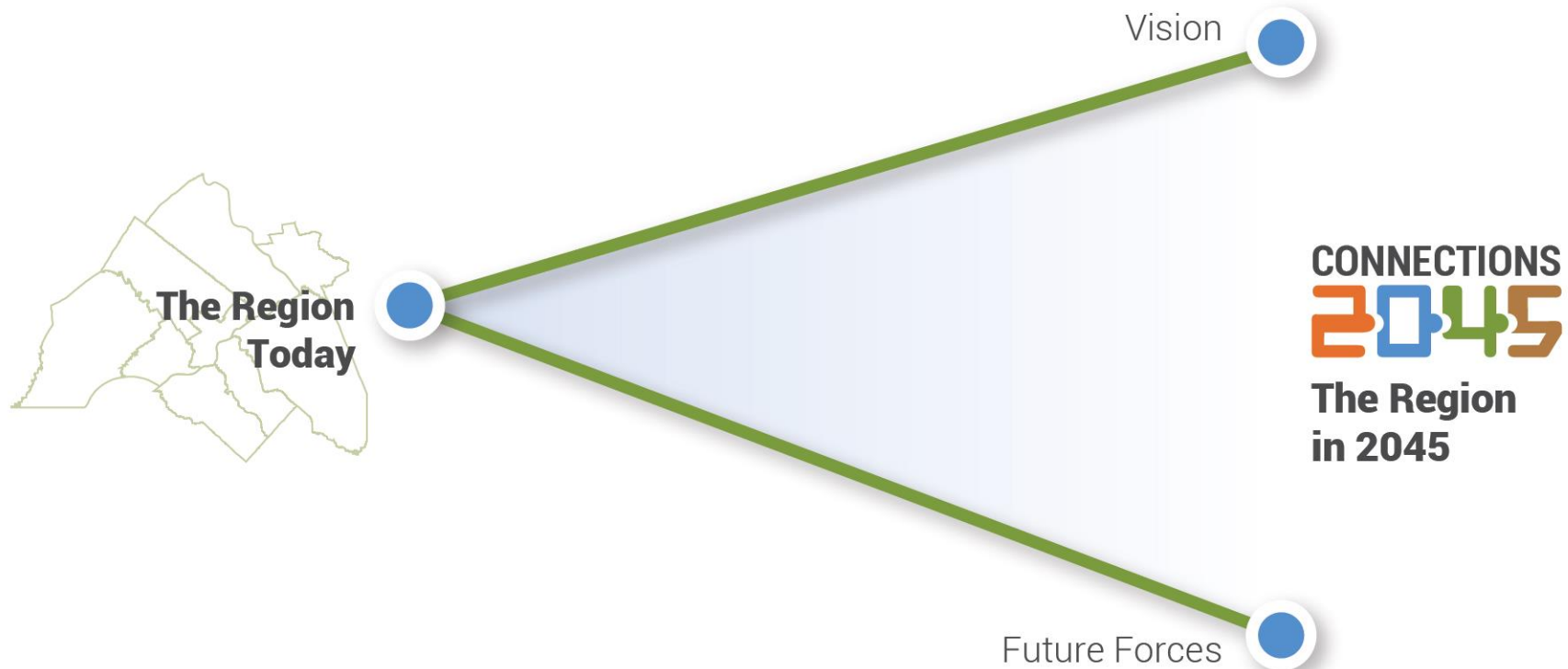


An abundance of domestically produced oil and natural gas keeps the cost of energy low.

CONNECTIONS

2045

Planning for Future Forces



Public Engagement



26

workshops
and meetings



1,815
comments
received



13
committees



9
counties



35
stakeholder
presentations



How we got
the word out:



social media



email



web



print

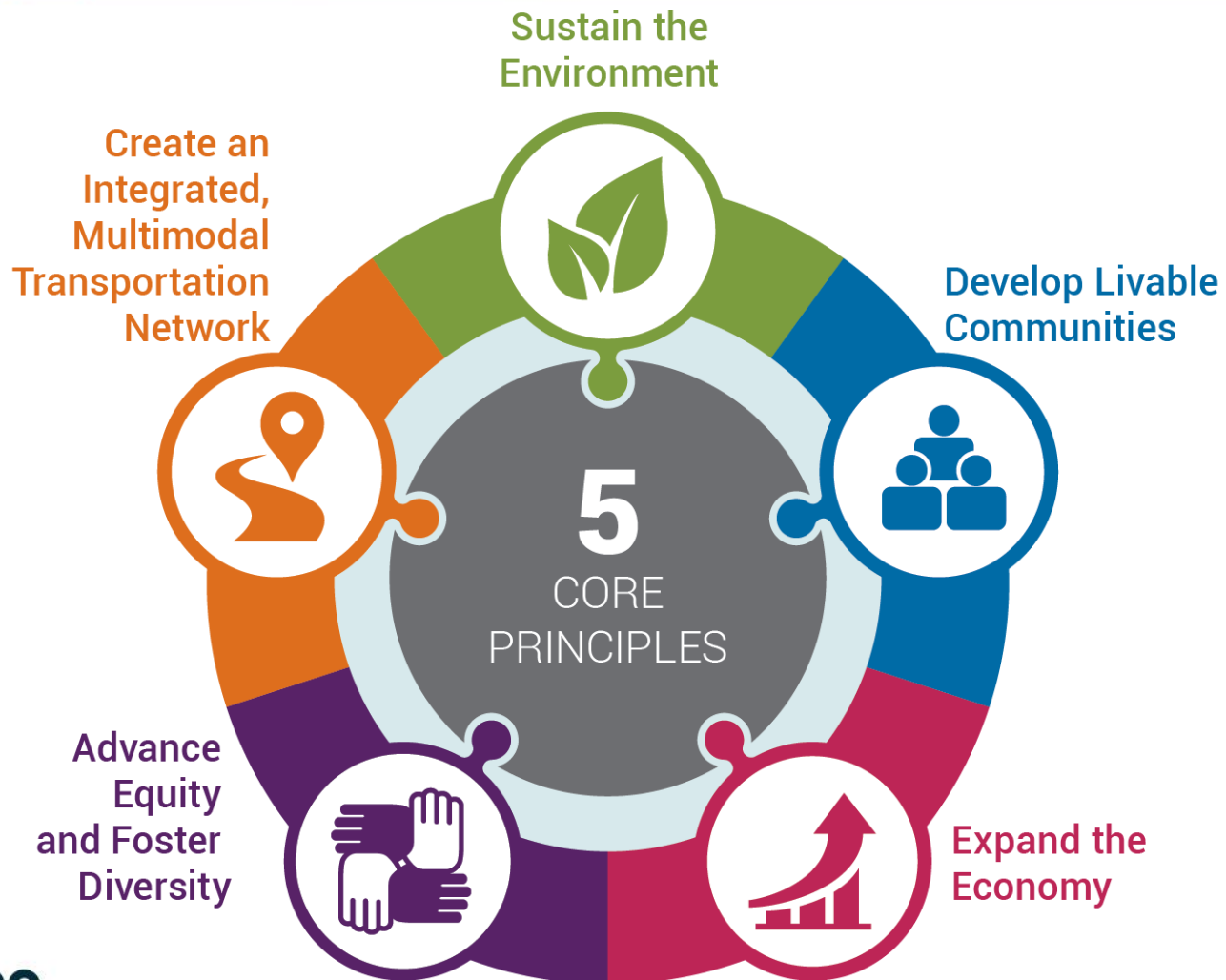


mail

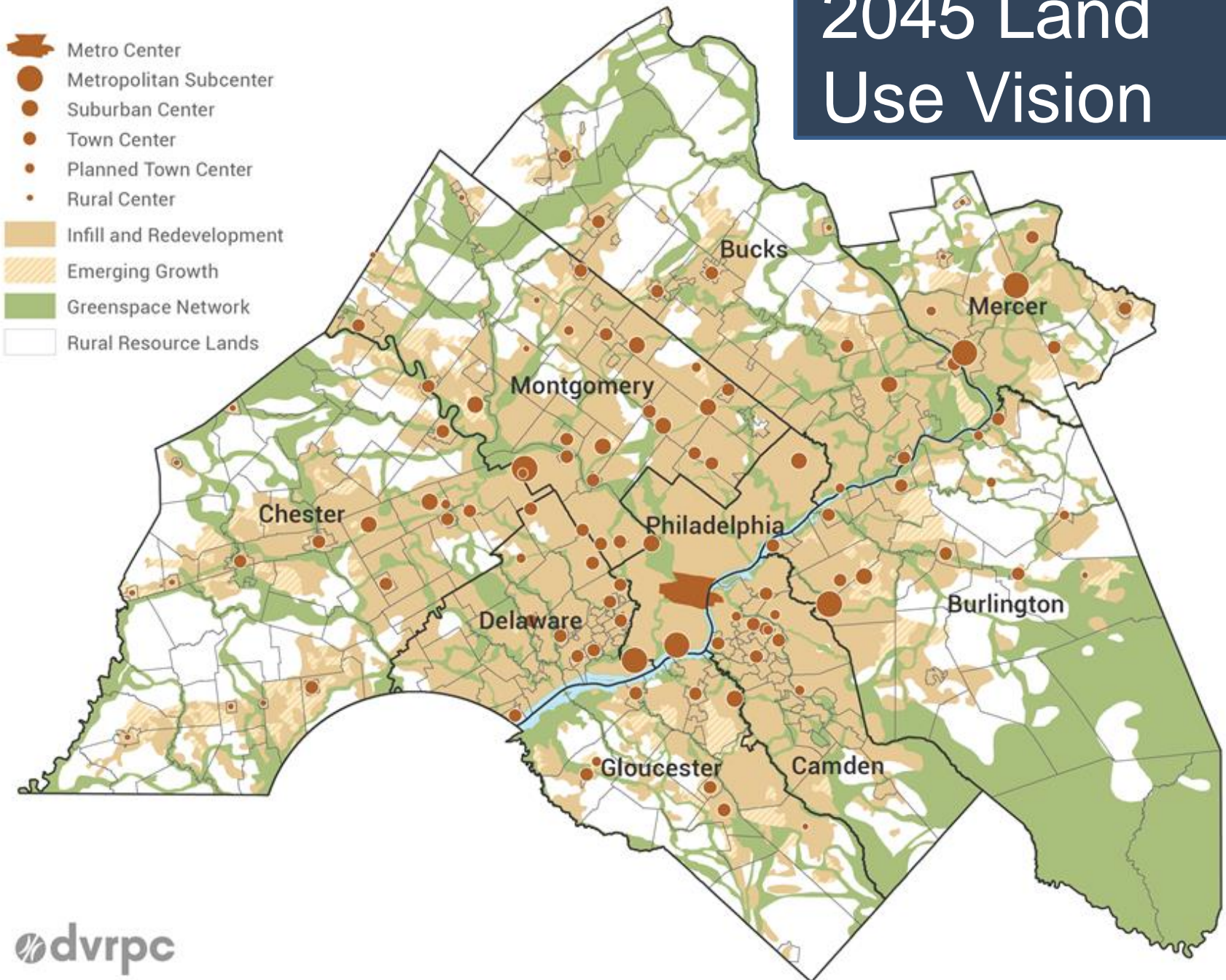
What We Heard



Vision

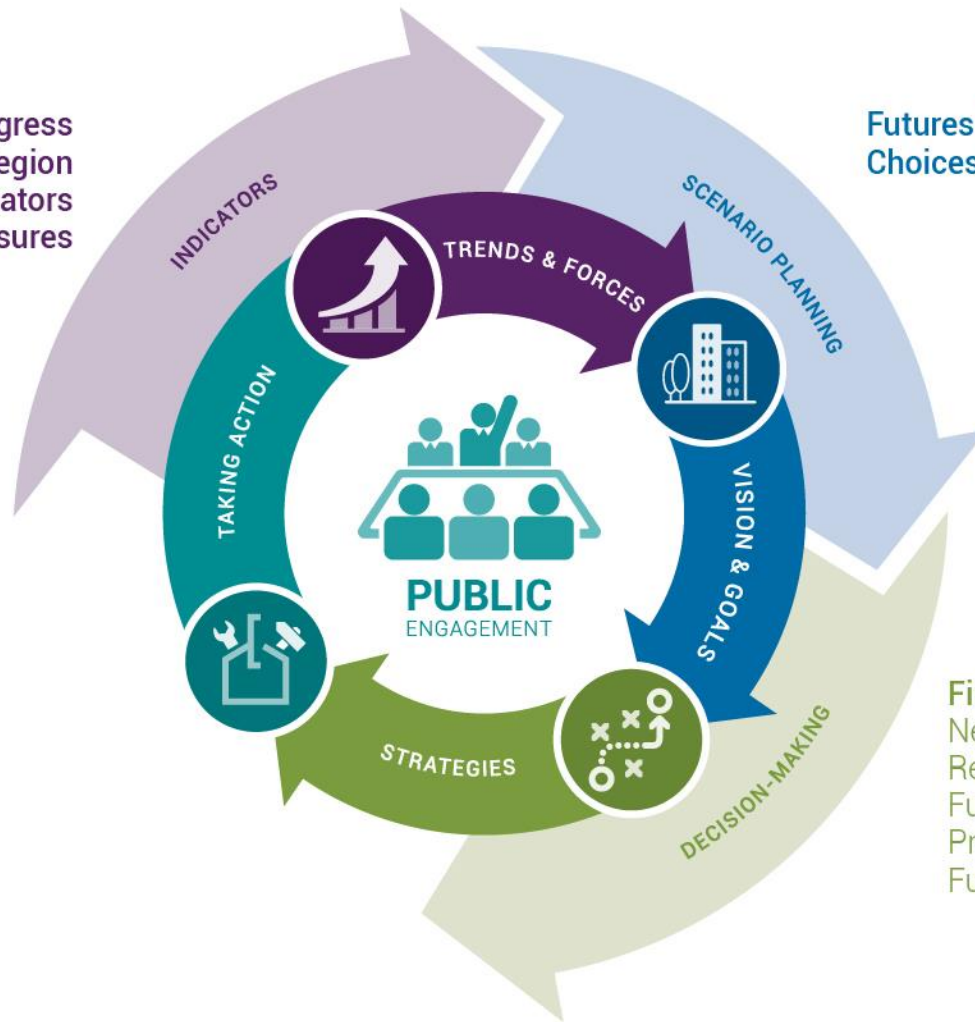


2045 Land Use Vision



Long-Range Planning

Tracking Progress
Rating the Region
Future Forces Indicators
U.S. DOT Performance Measures

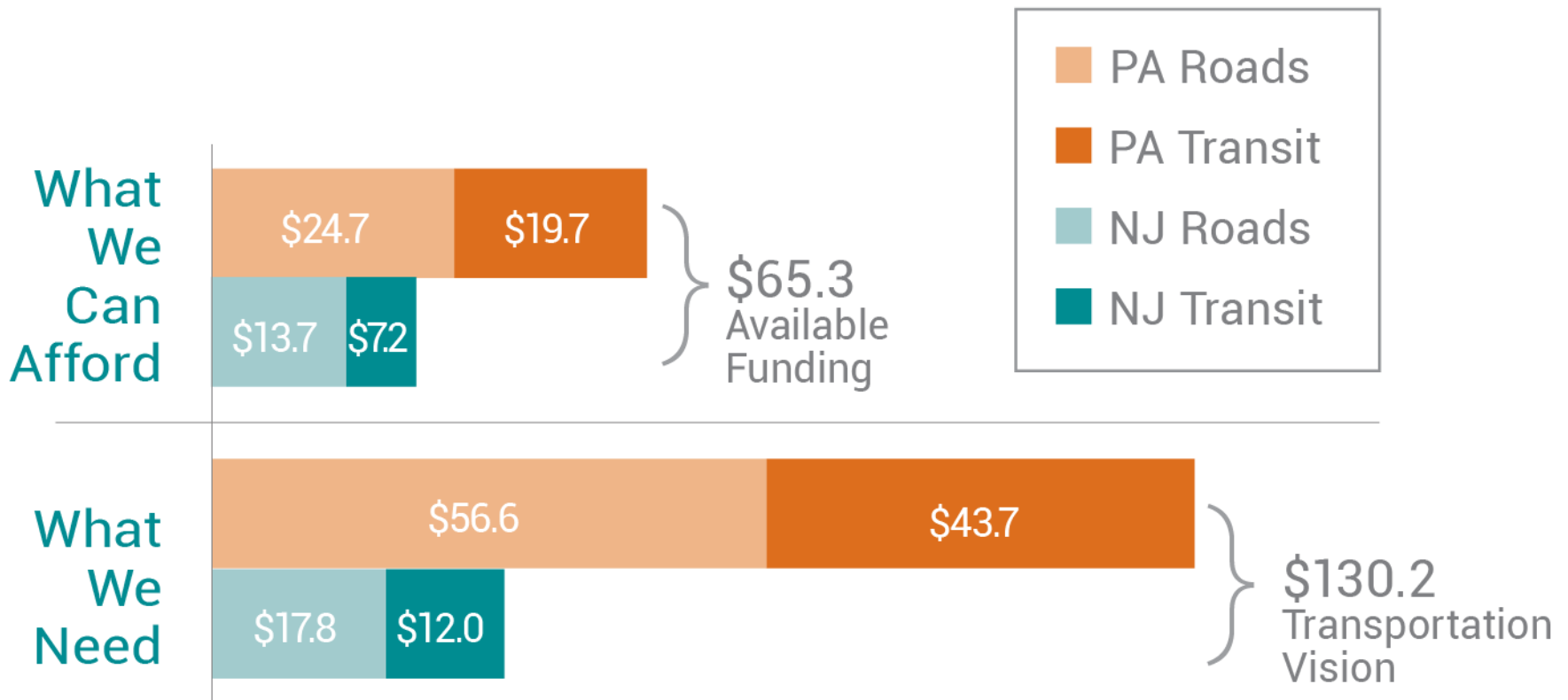


Futures Group
Choices & Voices

Financial Plan
Needs Assessment
Revenue Forecast
Funding Allocation
Project Evaluation
Funding Options



Transportation Vision & Available Funding



Local Funding Options



MILEAGE-BASED USER FEES

Drivers are charged by the mile for travel on a defined roadway network.



TOLL EXISTING HIGHWAYS

A user fee on designated limited access roads and bridges.



ACCESS FEES

A charge on nonresidential taxable property located near transit stations; similar to a business improvement district.



CARBON TAX

Assessed based on the carbon content emitted by the burning of fossil fuels.



SALES TAX

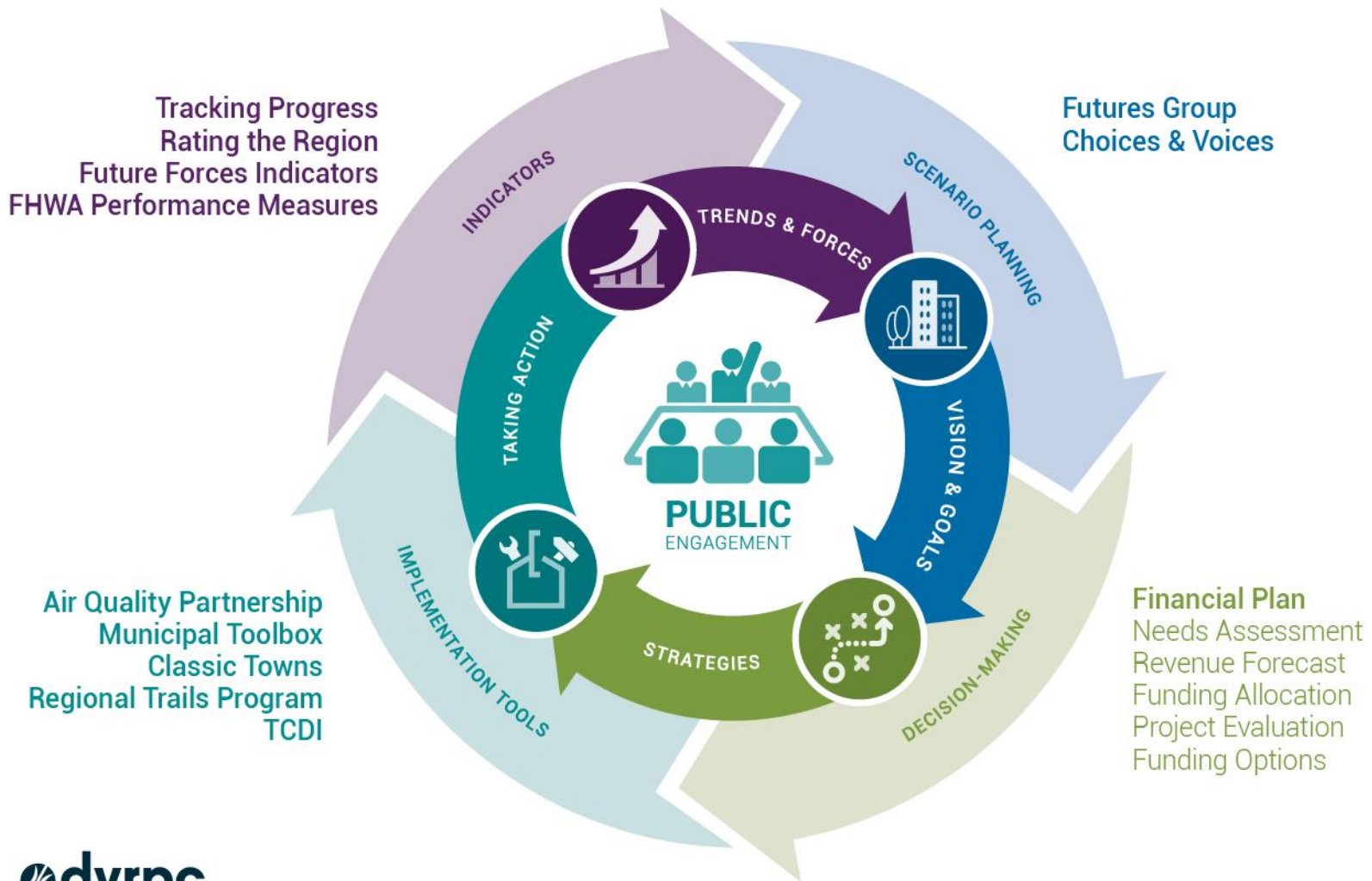
Levied as a percentage of the purchase price for goods, products, and services.



CONGESTION PRICING

Sets variable tolls to manage demand for using a facility or entering a specific zone, using revenue generated to provide more transportation options.

Long-Range Planning





Major Regional Project Webmap

Submit comments on the Draft Connections 2045 Long-Range Plan



Roadway Projects

- Roadway System Preservation
- Roadway Operational Improvements
- Roadway System Expansion
- Bicycle and Pedestrian

Transit Projects

- Transit System Preservation
- Transit Operational Improvements
- Transit System Expansion

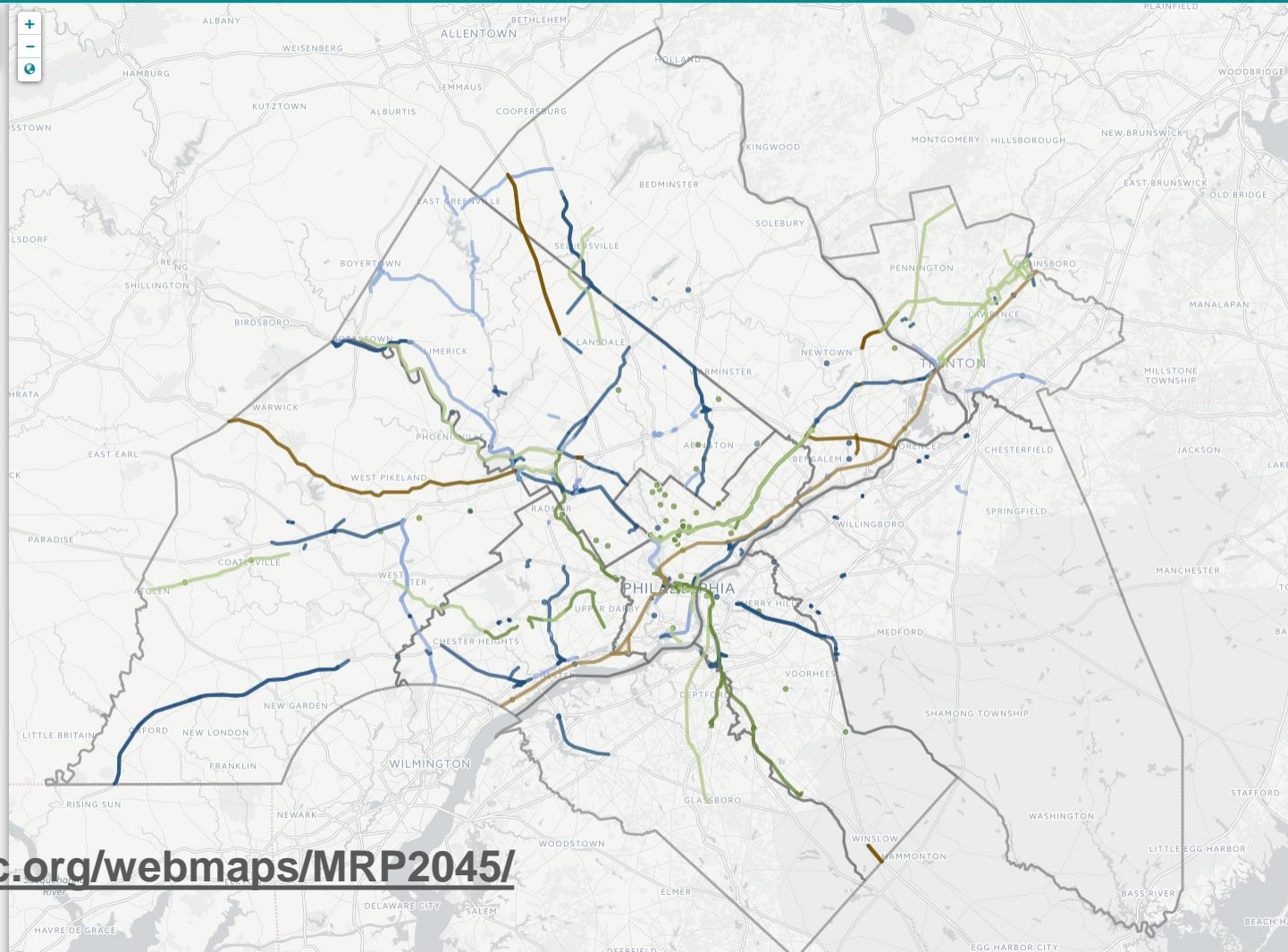
External Projects

- Externally Funded

Some projects do not have geographic limits and cannot be mapped, for the full list of projects view the table.

Legend

- Roadway Funded
- Roadway Unfunded
- Transit Funded
- Transit Unfunded
- Externally Funded
- Externally Unfunded



<https://www.dvrpc.org/webmaps/MRP2045/>

What You Can Do



JOIN A
COMPOSTING
PROGRAM



INSULATE
AND SEAL
YOUR HOME



AVOID
IDLING



USE LED OR
FLUORESCENT
LIGHTS



BUY LOCAL
PRODUCE



PLANT
A TREE



VISIT / SHOP
IN A CENTER



CLEAN UP
IN YOUR
COMMUNITY



SUPPORT
MIXED-USE
DEVELOPMENT



ENJOY LOCAL
PARKS & TRAILS



STAY INFORMED
ON COMMUNITY
ISSUES



USE RENEWABLE
ENERGY



SUPPORT LOCAL
BUSINESSES



START A
WALKING
SCHOOL BUS



ATTEND PUBLIC
MEETINGS



SUPPORT
POLICIES
FOR EQUITY



TAKE TRANSIT,
WALK, OR BIKE



COMBINE
ERRANDS
INTO ONE TRIP



TRAVEL
OFF-PEAK



CONSIDER A
HYBRID OR
ELECTRIC VEHICLE



CONNECTIONS

2045



Thank You!

www.dvrpc.org/connections2045



CONNECT WITH US
www.dvrpc.org

