



# Welcome to the Public Participation Task Force



# DVRPC + the Long-Range Plan



# Ground rules

- Let everyone have a chance to speak
- It's okay to disagree
- But... disagree with the idea, not the person.
- Do not interrupt one another



# Presentations

Let's start with the first set of slides



# Future City Competition



Susan L. Best, PE  
Philadelphia Region Future City Competition



# AGENDA

- What is the Future City Competition?
- Benefits
- How to Get Involved





# WHAT IS THE FUTURE CITY COMPETITION?

- Educational program developed by DiscoverE / National Engineers Week.
- Project-based learning program for 6<sup>th</sup>, 7<sup>th</sup> and 8<sup>th</sup> graders to imagine a city of the future.
- Students develop a vision of the world in the next 100 years.
- 2018-2019 will be the 24<sup>th</sup> year of the competition in Philadelphia





# ***WHAT IS THE FUTURE CITY COMPETITION?***

- Starts in September and concludes with a regional competition in late January
  - Registration begins in the Spring
- Each year has a new theme
- The winning team from each region competes in the national competition held in Washington, DC in February





# ***WHAT DO THE STUDENTS DO?***

- Use creativity to help solve a problem that faces society
- Find out what goes into planning, building, and running a city
- Use teamwork to achieve a goal
- Learn how engineers and planners affect our every day lives





# ***FUTURE CITY COMPETITION TEAMS***

- Official Competition Team:
  - Three students, plus one alternate
  - Teacher
  - Mentor
- School/Organization decides how to create teams



# ***FUTURE CITY COMPETITION DELIVERABLES***

- Project Plan
- Virtual City Presentation (Slide)
- City Essay
- City Model
- City Presentation



# ***FUTURE CITY COMPETITION DELIVERABLE – PROJECT PLAN***

- Set Goals
  - List resources, constraints, assumptions, and goals
- Schedule
- Team Check-In
- Team Reflection



# ***FUTURE CITY COMPETITION DELIVERABLE - VIRTUAL CITY PRESENTATION***

- Design a virtual city in SimCity and prepare a slide presentation





# *VIRTUAL CITY / SIMCITY*

- Not your typical computer game!
  - *requires thought, patience and problem solving skills*
- Students learn what goes into designing and managing an entire city
  - *Providing power, transportation, water, education, clean environment, waste management, and safety*
  - *Managing the budget*
  - *Understand purpose of zoning*



# ***FUTURE CITY COMPETITION DELIVERABLE – CITY ESSAY***

- Describe their city
- Define a problem based on the essay challenge
- Describe how their city solved the problems





***2019 THEME:  
POWERING OUR FUTURE***

*Design a resilient power grid that can withstand and quickly recover from the impacts of a natural disaster.*



# FUTURE CITY COMPETITION DELIVERABLE – CITY MODEL





# FUTURE CITY COMPETITION DELIVERABLE – CITY PRESENTATION

- Preliminary
- Finals









BENEFITS



# ***BENEFITS***

- 85% of participants see math and science in their future.
- 57% said Future City helped them in their other classes.
- 83% reported they learned how to use problem solving to address real-world problems.





# ***BENEFITS***

- 68% said they could see themselves as engineers someday.
- 89% reported that they have a new appreciation for the engineering and planning that goes into a city.
- 75% said it boosted their self-confidence.





HOW TO GET INVOLVED

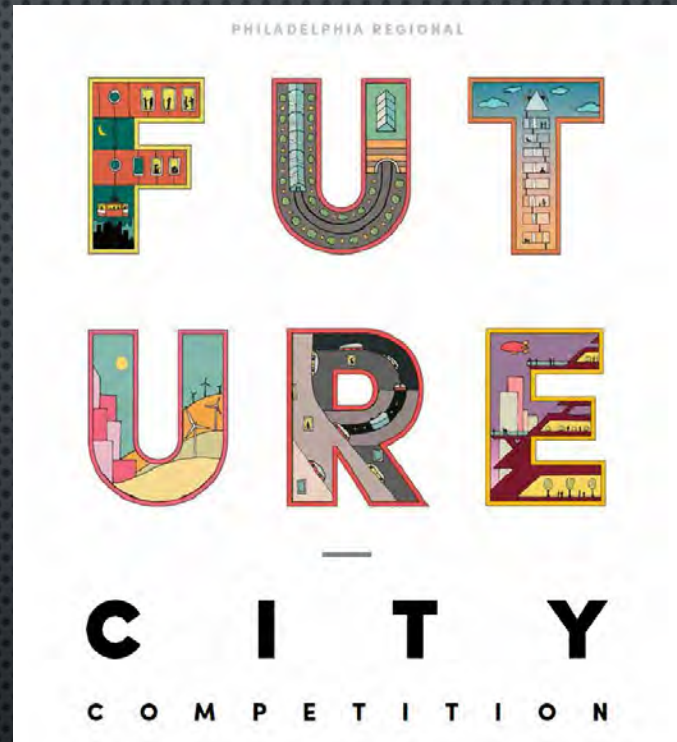


# ***HOW TO GET INVOLVED***

- Encourage your local school or youth organization to participate
- Volunteer
  - Mentor
  - Deliverables Judge or Special Awards Evaluator
  - General volunteer
- Be a sponsor
  - At \$250 or more, a special award is given in the sponsor's name
  - Future City is a 501(c)3 educational outreach program and is tax deductible
- [www.futurecityphilly.org](http://www.futurecityphilly.org)



# THANKS FOR YOUR TIME!



## ANY QUESTIONS?

Contact: Susan Best  
610-592-4358  
susanbest54@gmail.com





POWER TO THE  
YOUTH

By: TIMMY LAWRENCE



# Get

## The Youth Leadership Council?

- **Work at The Food Trust**
- **Team of 10-15 students that attend different schools**
  - **Come together to work on a school year long advocacy project**
- **We choose our own policy and advocacy topic for the year**

# Philly!



# Water Advocacy work

Morgan video

- Water access in school
  - Issues with lead pipes
  - No working water fountains
  - Students choosing sodas over water
- We spoke with city council member
- Testified at SRC meetings
- Worked with other nonprofits



# Why the youth are involved

- Giving ourselves to right to voice our grievances
- Feeling our power
- The tools of resistance
  - Building vocabulary
  - Gaining new perspectives
  - Networking and collaborating
  - Knowledge is key
  - Reconditioning
- Seeing our goals being accomplished
- WE CARE!!!





# What's next

- Mental health access in schools
  - More quality counselors
  - Trauma training for teacher
  - Restorative justice training
- Collaborating with other nonprofits to have a mental health access campaign





# In conclusion

- We have great ideas but are never asked
- Cultivate our creativity and curiosity
- Remind us that the world needs our greatness
- The revolution is coming





# Community + Environmental Planning @ Rowan University

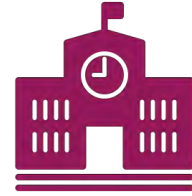
Delaware Valley Regional Planning Commission | **8.9.18**



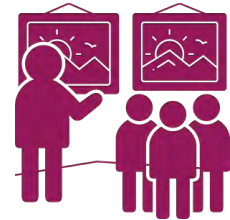
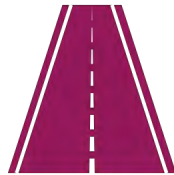
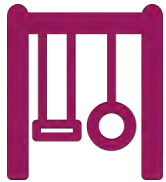


# Community + Environmental Planning Program





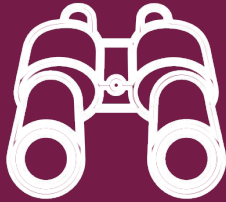
# Planners Connect People to Resources





# Planning Education

Employs a range of  
teaching methods



**To allow students to:**

1. Understand the field conceptually +
2. Comprehend the effects of planning within the places we call home and our culture

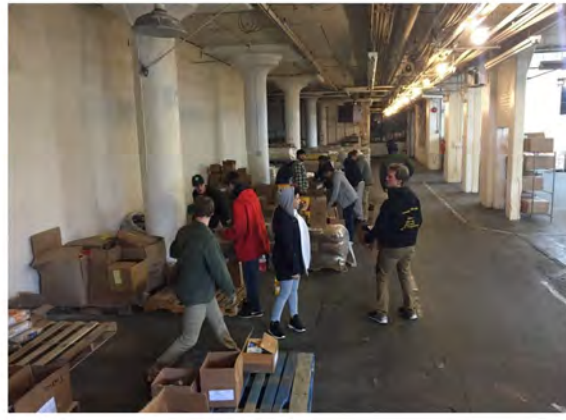
---





Lectures









Projects





Projects





**Food Systems Planning Consulting Assignment**  
*Salem County Group Distribution*  
 Spring 2018



| Group Number | Group Members  | Assigned Municipalities              |
|--------------|--|--------------------------------------|
| 1            | Max Nolan, Kate Viscusi, Shannon Goodman, Kelsey Whitten         | Oldmans, Penns Grove, Carney's Point |
| 2            | Nick Corwinski, Camden Putnal, Alec Walker                       | Pennsville, Salem                    |
| 3            | Dante Masale, Alec Ketchell, Rashawn Brown, JP Perez             | Marlinton, Woodstown, Pittsgrove     |
| 4            | Devon Moulton, Jason Vinociguera, Kayon Esaiandochi, Dan Sindoni | Upper Pittsgrove, Alloway            |
| 5            | Diego Reyes, Alex Roman, Alex Barasa                             | Lower Alloways, Elsinboro, Quinton   |
| 6            | Rudy Camilo, Tim Lemon, Amanda Paton, Tim Gleason                | Pittsgrove, Elmer                    |

# SALEM COUNTY FOOD OUTLET GUIDE

*Created for the Ready, Set, Grow! Initiative by Rowan University's Spring 2018 Food Systems Planning Class*

**Farmers Markets/Farm Stands**  
 Graham's Jersey Farm Stand  
 US-40, Carneys Point, NJ 08069  
 856-299-2182  
 Hours of Operation:  
 • 8AM-8PM Monday-Sunday

Graham's Jersey Farm Stand is a produce stand with a variety of seasonal fruits and vegetables. It's not a one-stop shop for groceries but it provides a source for healthy food options.



| Elmer                       |     |     |      |        |                |              |                        |                   |        |
|-----------------------------|-----|-----|------|--------|----------------|--------------|------------------------|-------------------|--------|
| Food Outlet                 | EBT | WIC | Cash | Credit | Personal Check | Healthy Food | Accessible by Transit? | Ready to Eat Food | Price  |
| Large Format Food Stores    |     |     |      |        |                |              |                        |                   |        |
| Elmer IGA                   | ✓   | ✓   | ✓    | ✓      | ✓              | ✓            |                        | ✓                 | \$\$   |
| Small Format Food Stores    |     |     |      |        |                |              |                        |                   |        |
| Andersons Country Store     |     |     | ✓    |        |                | ✓            |                        | ✓                 | \$\$\$ |
| Dollar General              |     |     | ✓    | ✓      | ✓              |              |                        | ✓                 | \$\$   |
| Heritages                   |     |     | ✓    |        | ✓              | ✓            |                        | ✓                 | \$     |
| Joes Butcher Shop           | ✓   | ✓   |      | ✓      | ✓              |              |                        | ✓                 | \$\$\$ |
| Pittsgrove Deli and Grocery | ✓   |     | ✓    | ✓      |                |              |                        |                   | \$\$\$ |
| Sunoco Gas Station          |     |     | ✓    |        |                |              |                        | ✓                 | \$     |
| US Gas and Food Mart        |     |     | ✓    | ✓      |                |              |                        | ✓                 | \$     |
| Wawa                        | ✓   |     | ✓    |        |                | ✓            | ✓                      | ✓                 | \$     |



# Planning Courses @ Rowan University

---

- Foundations of Planning & Environmental Design
- Urban Geography
- Metropolitan + Regional Planning
- Land Use + Conservation
- NJ Applied Planning Practice
- Sensing the Sustainable City
- Environmental + Sustainable Planning
- Community Planning + Design
- Transportation Geography
- Population Geography
- Geovisualization
- Environmental Impact Assessment
- Food Systems Planning





Megan Bucknum  
*Dept. of Geography,  
Planning, + Sustainability*  
**bucknum@rowan.edu**





# Q&A

Discussion with presenters





# Breakout Discussion:

How to  
engage youth  
in LRP?

Educating  
youth on  
issues

Schools

Hands-on workshops

Community  
leaders host  
meetings





**You are working at the regional  
planning agency and want to  
engage youth in the LRP.  
What is your outreach strategy?**

**(20 mins)**





**20 mins**

Keep brainstorming

**10 minutes**

Start solidifying your idea

**5 minutes**

Get your idea down!



**20 mins**

Keep brainstorming







~~**20 mins**~~

~~Keep brainstorming~~

**10 minutes**

Start solidifying your idea





~~**20 mins**~~

~~Keep brainstorming~~

~~**10 minutes**~~

~~Start solidifying your idea~~

**5 minutes**

Get your idea down!



# 1-minute Report Back



What did your group come up with?





# Thanks!

Any questions?

Contact Shoshana Akins at [sakins@dvrpc.org](mailto:sakins@dvrpc.org).