

What is the Long-Range Plan?

Public Participation Task Force | 04.03.18

CONNECTIONS

2045



Delaware Valley Regional Planning Commission



- Federally-Designated MPO for Nine-County Philadelphia Region in PA and NJ
- Created in 1965 to Plan for the “Orderly Growth and Development” of the Region
- Short, Medium, and Long-Term Transportation Plans Provide Funding for Projects
- Board Members Include States, Counties, Cities, and Transportation Agencies

The Region by the Numbers

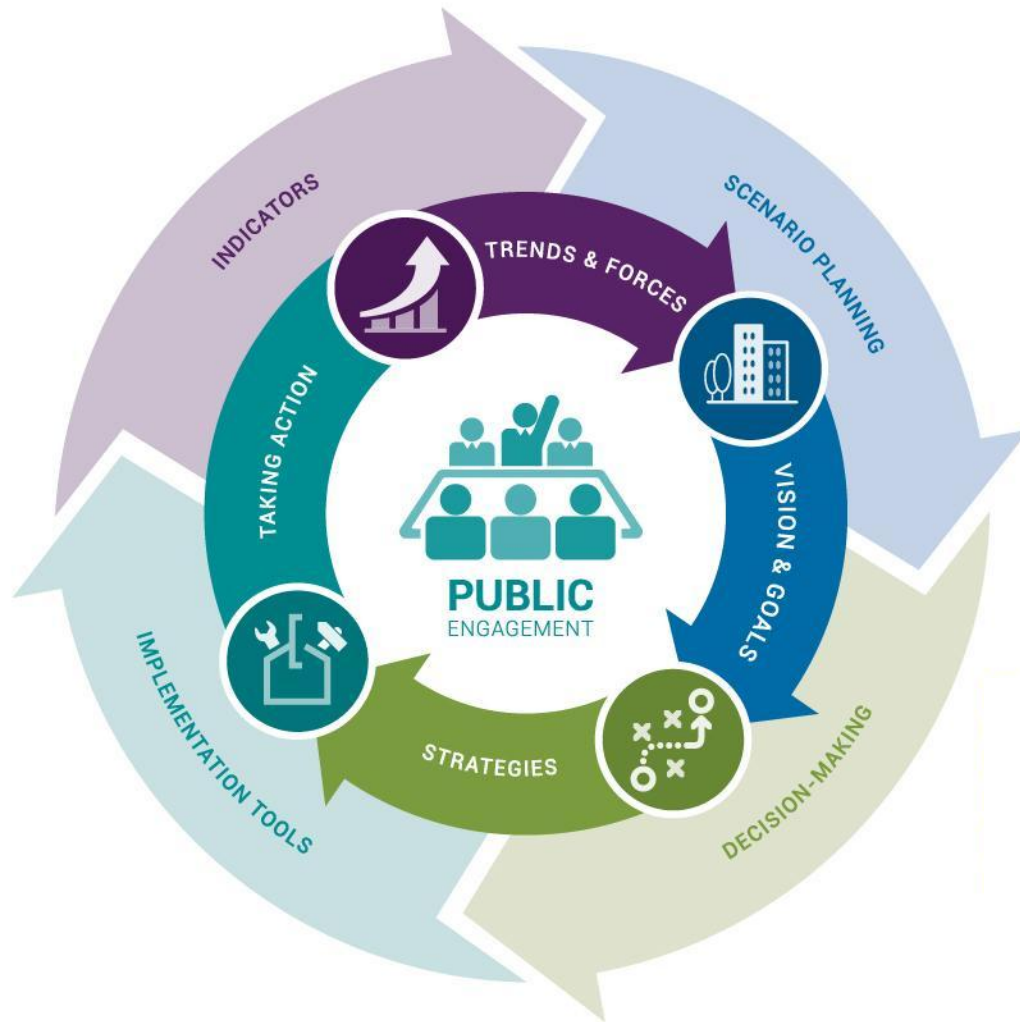


- Governance = 9 Counties & 351 Municipalities
- Population Growth to 2045 = 11.5%
- Employment Growth to 2045 = 11.8%
- Land Development = 24 Acres/Day
- Daily Traffic = 110,000,000 VMT
- Transit = 1,000,000 Trips/Day

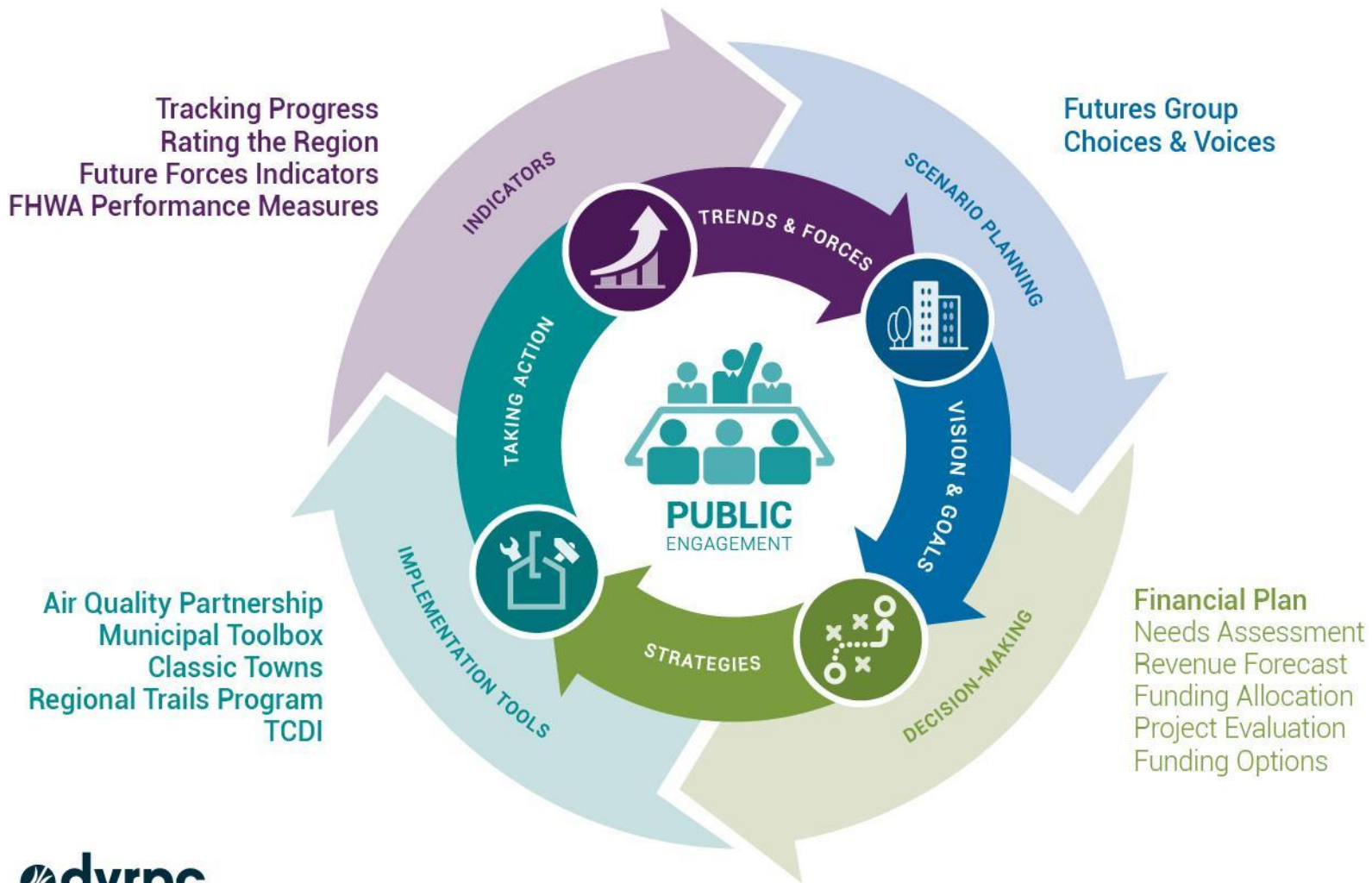
Long-Range Planning



Long-Range Planning



Long-Range Planning



Regional Indicators



#1

An aging population with increasing service and mobility needs.

#2

Disparities between urban and suburban educational attainment and unemployment.

#3

Relatively low expenditures in academic research and development, and venture capital investment.



#1

Diverse economy and extensive highway, transit, aviation, and port facilities.

#2

Rich in healthcare resources.

#3

Large number of higher education institutions.



Future Forces



People and jobs moving to walkable communities is the start of a long-term trend.



Increased outsourcing and automation means individuals must create their own economic opportunities.



Continued rise in atmospheric carbon levels lead to significant disruptions from climate change.

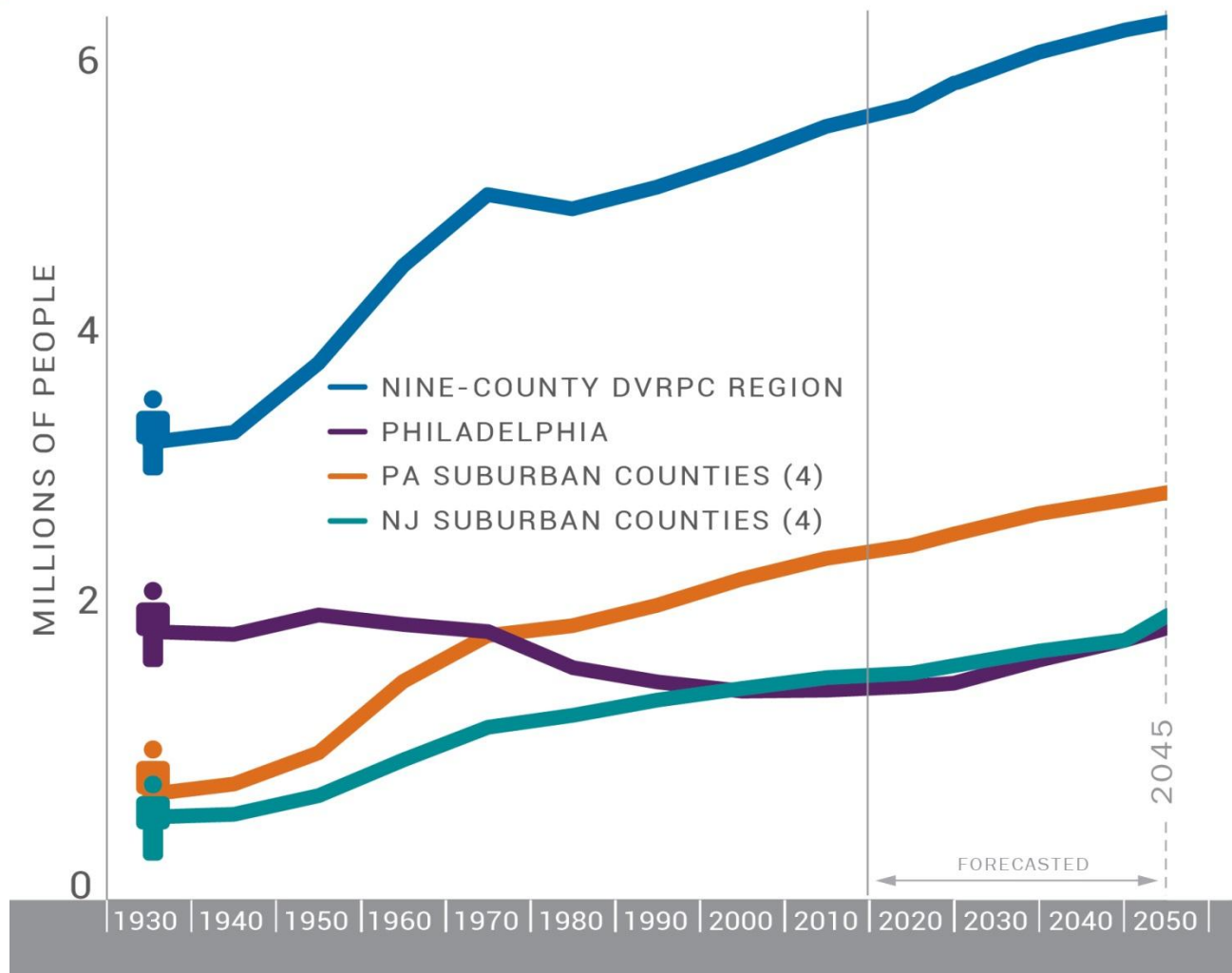


Smartphones, apps, and real-time info help people get around using new and existing transportation modes.



An abundance of domestically produced oil and natural gas keeps the cost of energy low.

Regional Population, 1930-2045





Visioning Spring 2016 Workshops



What We Heard



Vision





Sustain the Environment





Develop Livable Communities



Expand the Economy



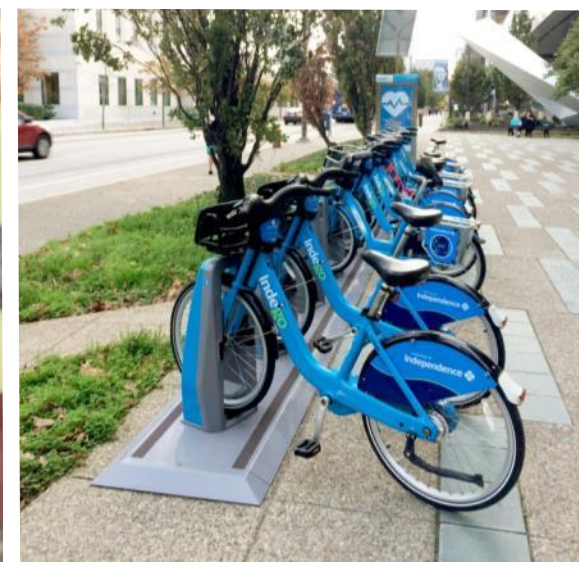


Advance Equity and Foster Diversity

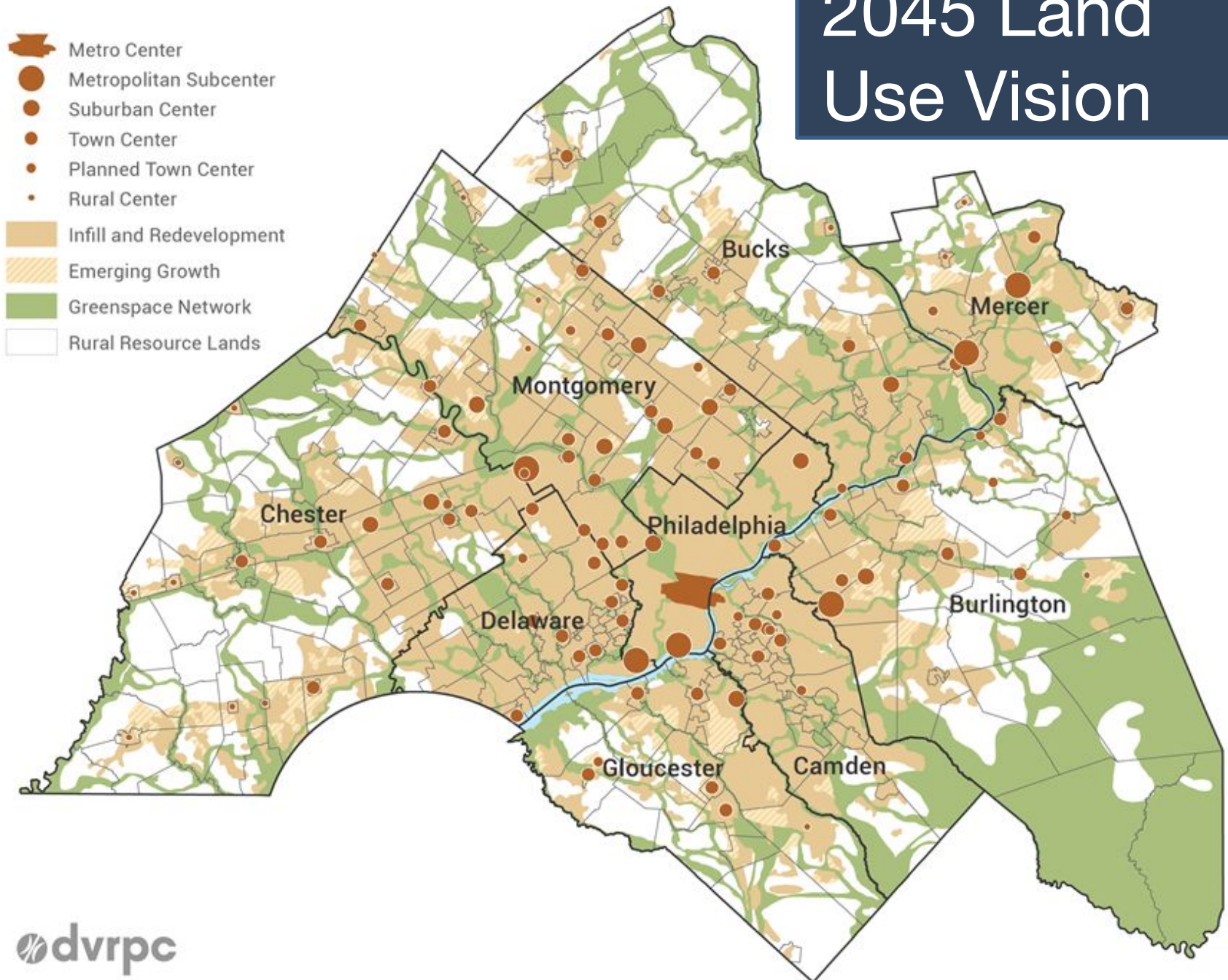




Create Integrated Multimodal Transportation Network



2045 Land Use Vision





Long-Range Financial Plan

Needs Assessment & Vision Plan

Revenue Forecast

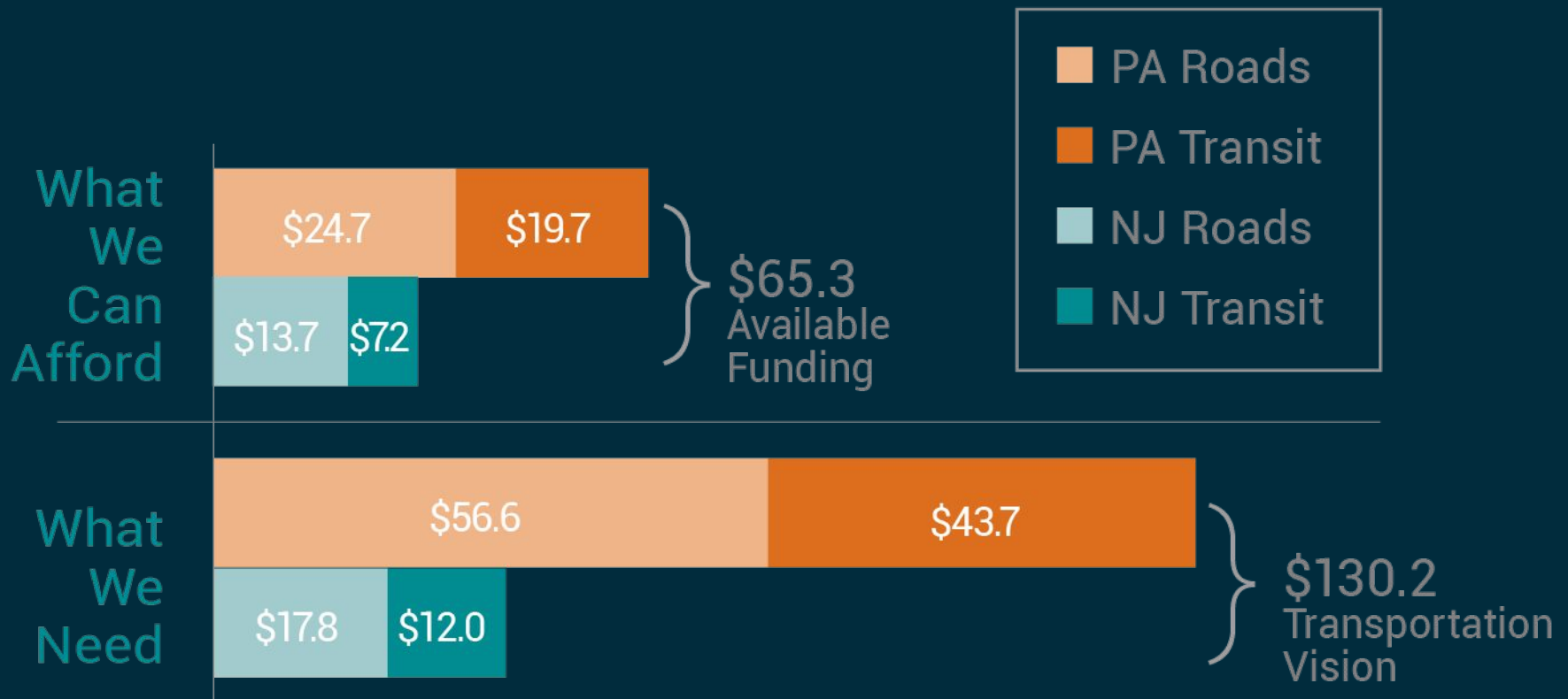
Funding Allocation

Project Evaluation & Selection

Funding Options



Transportation Vision & Available Funding



Major Regional Project Webmap

Submit comments on the Draft
Connections 2045 Long-Range Plan



Roadway Projects

- Roadway System Preservation
- Roadway Operational Improvements
- Roadway System Expansion
- Bicycle and Pedestrian

Transit Projects

- Transit System Preservation
- Transit Operational Improvements
- Transit System Expansion

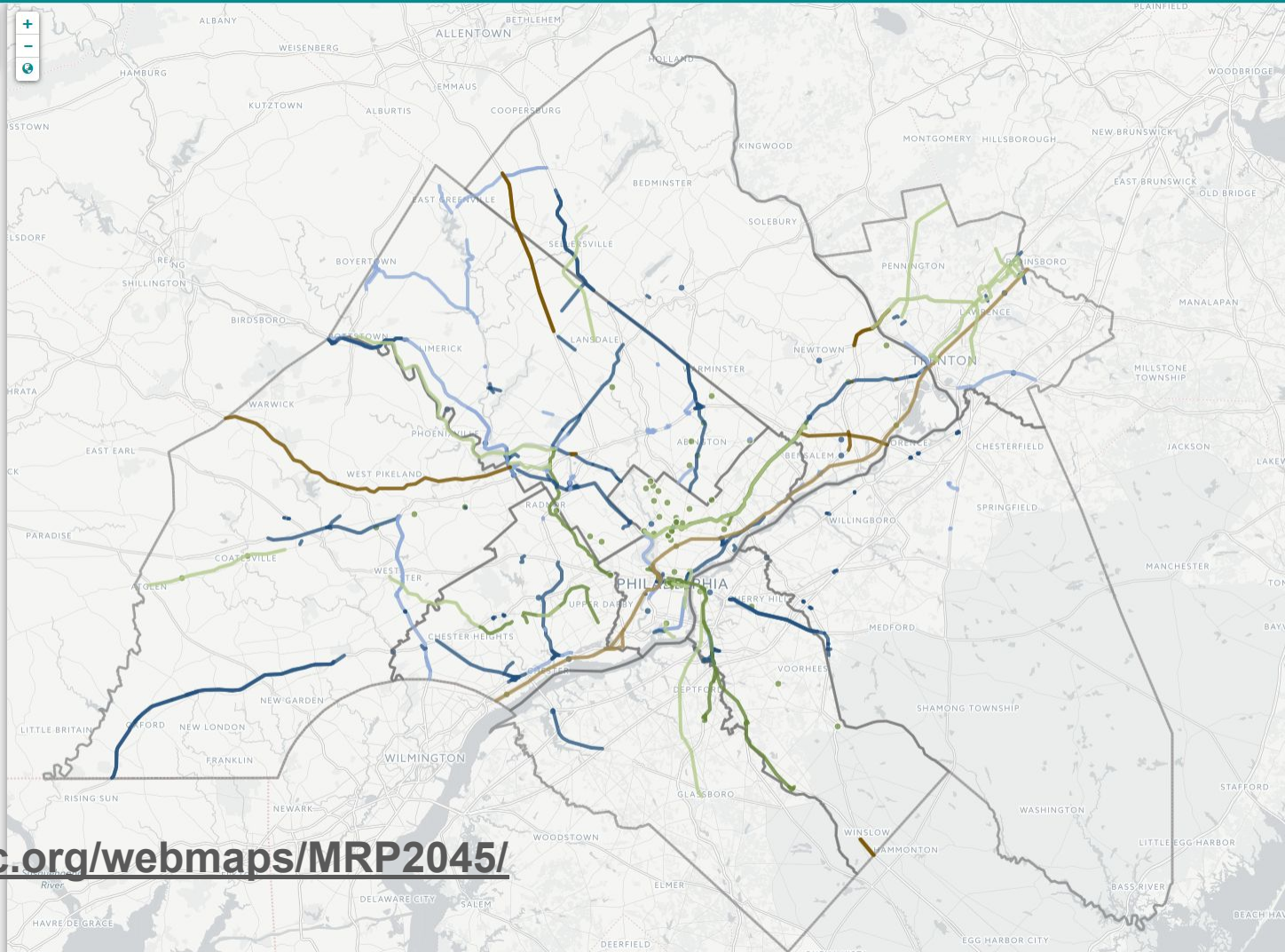
External Projects

- Externally Funded

Some projects do not have geographic limits and cannot be mapped, for the full list of projects [view the table.](#)

Legend

-  Roadway Funded
-  Roadway Unfunded
-  Transit Funded
-  Transit Unfunded
-  Externally Funded
-  Externally Unfunded



<https://www.dvrpc.org/webmaps/MRP2045/>

Local Funding Options



MILEAGE-BASED USER FEES

Drivers are charged by the mile for travel on a defined roadway network.



TOLL EXISTING HIGHWAYS

A user fee on designated limited access roads and bridges.



ACCESS FEES

A charge on nonresidential taxable property located near transit stations; similar to a business improvement district.



CARBON TAX

Assessed based on the carbon content emitted by the burning of fossil fuels.



SALES TAX

Levied as a percentage of the purchase price for goods, products, and services.



CONGESTION PRICING

Sets variable tolls to manage demand for using a facility or entering a specific zone, using revenue generated to provide more transportation options.



CONNECTIONS
2045

Thank You!
bfusco@dvrpc.org

www.dvrpc.org/connections2045



CONNECT WITH US
www.dvrpc.org





Tracking Progress
Regional Indicators
Update Project

Public Participation Taskforce | April 3, 2018



CONNECTIONS

2045

Tracking Progress Regional Indicators - What Are They?



- Data points with which to track the region’s progress under the Long-Range Plan’s principles
- A “dashboard” of metrics we want to move the needle on
- Outcomes measuring whether we’re attaining our vision for the region





Tracking Progress Regional Indicators - What They've Been



1. Are people driving less?
2. Is transit ridership increasing?
3. Have vehicle fatalities declined?
4. Is congestion getting worse?



5. Are fewer people driving to work alone?
6. Is commute time decreasing?
7. Has the number of deficient bridges in need of rehabilitation or replacement decreased?



8. Are roads better maintained?
9. Is the transit system being maintained?
10. Is tip investment in plan centers increasing?
11. Are freight shipments in the region increasing?



12. Is passenger traffic at Philadelphia international airport increasing?
13. Has the number of jobs in the region increased?
14. Has average annual pay in the region increased?
15. Is the workforce becoming more educated?



16. Is housing affordable?
17. Are greenhouse gas emissions lower?
18. Are we using less energy?
19. Is the population of core cities/developed communities/mature suburbs increasing?
20. Is employment in core cities/developed communities/mature suburbs increasing?



21. Have the tax bases of core cities/developed communities/mature suburbs increased?
22. Has residential construction activity increased in core cities and developed communities/mature suburbs?



Tracking Progress Regional Indicators - What They've Been

- Updated...
 - Once with each new plan (every 4 years)
 - Usually once in between (so more like 2 every two years)
- Difficult to update all the 2 page summaries



Tracking Progress Regional Indicators - What They Could Be

- Updated annually (depending on data source)
- More visual, less tabley & texty
- With data highlights summarized in media blasts when a data update occurs--driving people to our website
- Hopefully more relevant to regional stakeholders (like you!)
- Something that links visitors to the many seemingly disparate but actually related efforts of DVRPC
- Not falsely labeling an indicator as only related to one principle

What We're Looking for

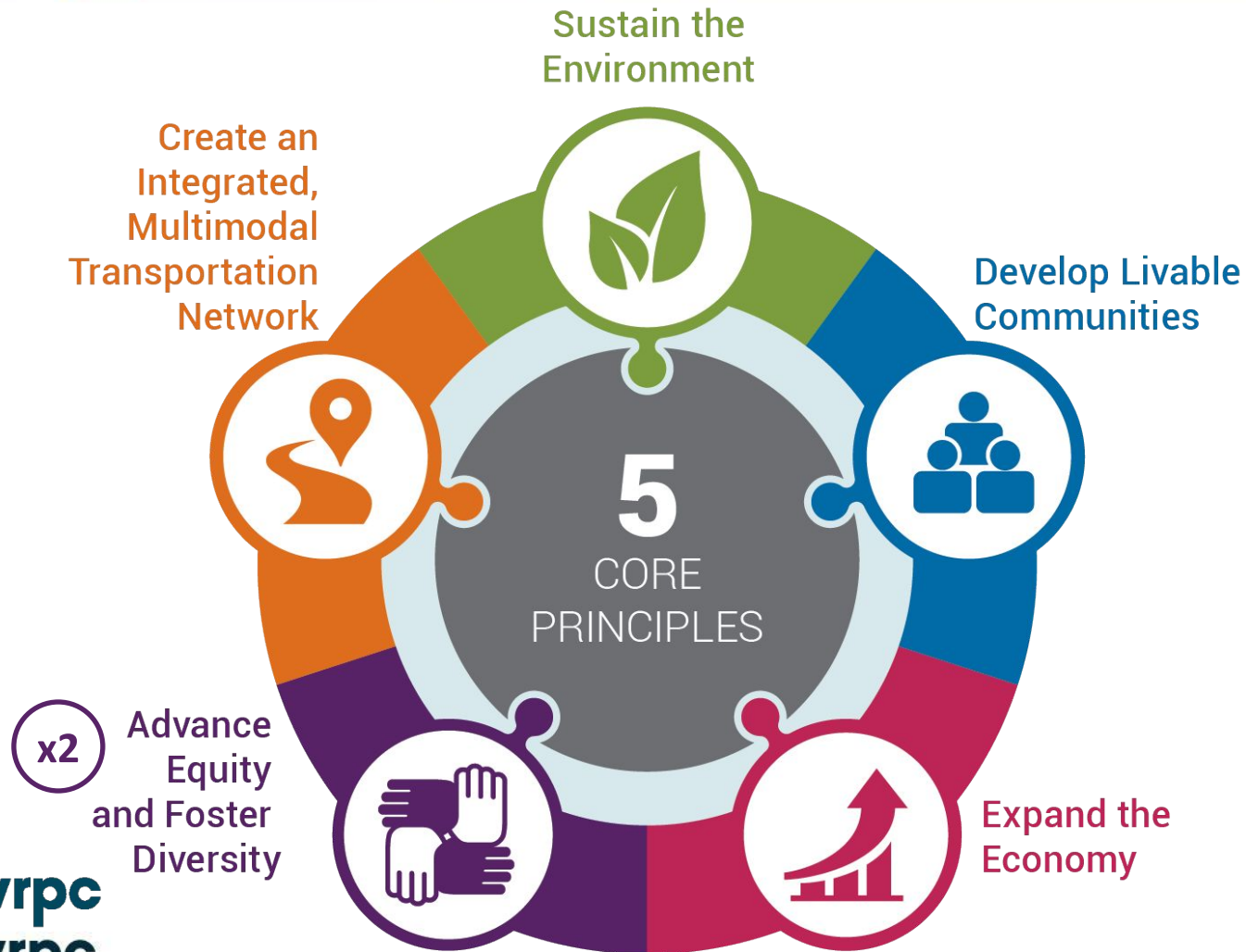
- Fairly high-level
- Reliable data
- Something meaningful/relevant
- Something with a trend line
- Fairly frequently updatable



What We're Particularly Looking for from you

- Fairly high-level
- Reliable data
- **Something meaningful/relevant**
- Something with a trend line
- Fairly frequently updatable

5 Principles (6 Tables)



Thank You!

Ben Gruswitz | Senior Planner
bgruswitz@dvrpc.org

www.dvrpc.org/connections2045

CONNECTIONS

2045



CONNECT WITH US
www.dvrpc.org



Indicators Workshop Overview

CONNECTIONS

2045

Overview of Workshop

- Ground Rules
- Activity #1 – Brainstorm Indicators
- Activity #2 – “Open House”
 - See what other tables talked about (report-back)
 - Use stickers to see the “wisdom of the crowd”
- Next Steps
- Thank you!

Setting up Activity #1

- Goal: Brainstorm indicators for particular Plan Principle
- Small group discussions at your table
- Tables organized by Plan Principle...
 - You're all experts
 - Lots of cross-over between Principles
 - Ok for repetition

Tables

- Transportation
- Livable Communities
- Environment
- Economy
- Equity (A)
- Equity (B)

Ground Rules

- Let everyone have a chance to speak
- Ok to disagree
- But... disagree with the idea, not the person.
- Do not interrupt one another

Activity #1 – Brainstorm Indicators

- Goal: Brainstorm indicators for particular Plan Principle
- Optional Worksheets – if you want to write down your thoughts
- At end - put up 3-5 of your best ideas on poster boards
- Time: 20-30 minutes
- Timekeeper: Shoshana



Activity #1 – Brainstorm Indicators

1. Introduce yourself
2. What data would you like to see analyzed for this Principle?
3. How might we “track progress” towards this Principle?



5 minutes left

Put “best ideas” on Post-its/ Poster Board



2 minutes left

Now's the time to put "best ideas" on
Poster Board

Activity #2 – Open House

- Goal: See what other tables came up with
- Use your stickers to help us see the “wisdom of the crowd.”



Next Steps for Indicators Project

- Transcribe small group discussion notes
- Do a similar workshop with Regional Technical Committee (RTC)



Next Steps for Indicators Project

- Transcribe small group discussion notes
- Do a similar workshop with Regional Technical Committee (RTC)



THANK YOU!

- Questions about LRP and Indicators – see Brett, Jackie, Ben
- Feedback on tonight’s workshop – see Shoshana, Alison



CONNECTIONS

2045

Sustain the Environment





Develop Livable Communities



CONNECTIONS

2045

Expand the Economy



CONNECTIONS

2045

Advance Equity and Foster Diversity





Create Integrated Multimodal Transportation Network

