

**DVRPC**

**WHAT WE ARE**

**AND**

**WHAT WE DO**

---

**Public  
Participation  
Task Force**

**John Ward**  
Deputy Executive  
Director

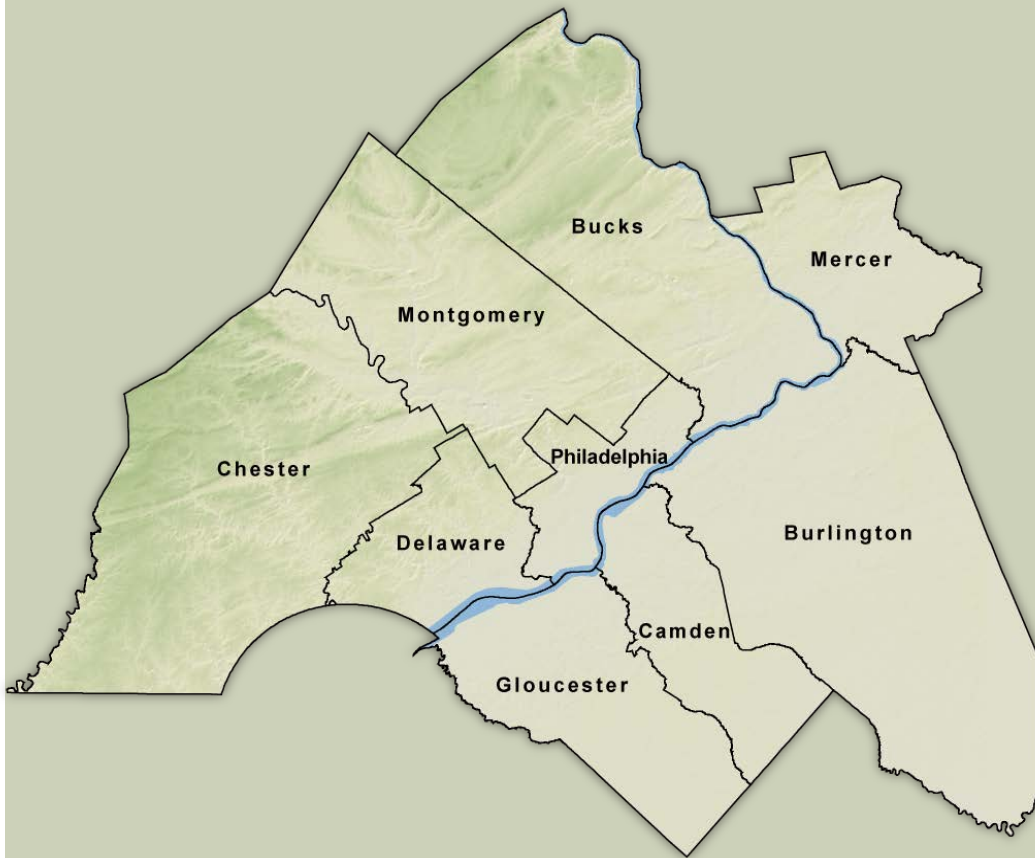
February 25, 2016

# WHAT IS DVRPC?

- Federally-designated MPO for nine-county Philadelphia region
- Created in 1965
- Plan for “orderly growth and development”
- Transportation, land use, open space, housing and economic development
- Long Range Plan: Connections 2040

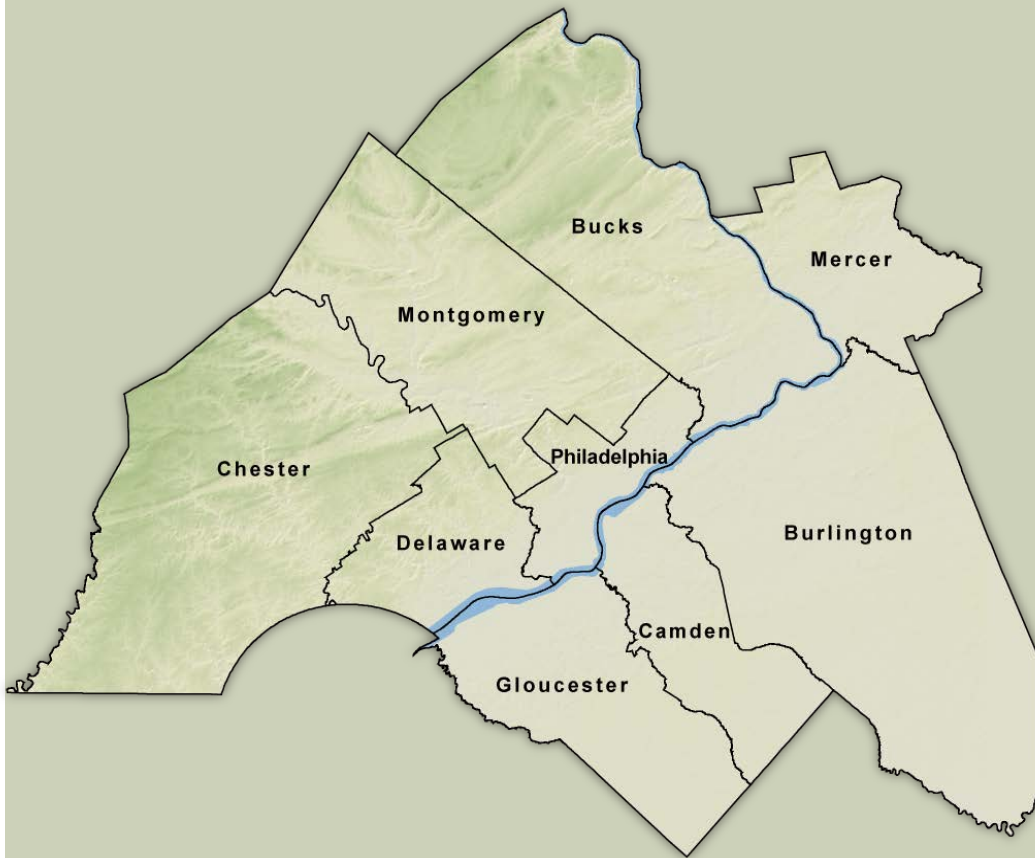


# DVRPC BY THE NUMBERS



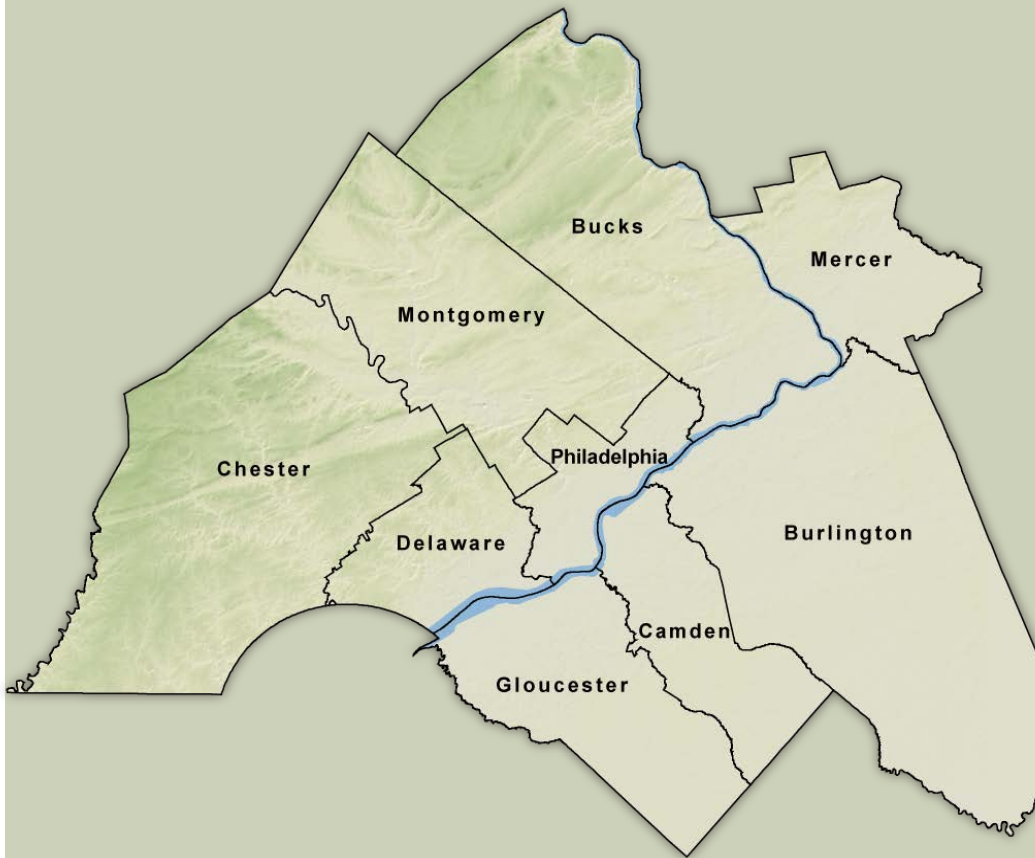
Population =

# DVRPC BY THE NUMBERS



Population =  
*5.5 million people*

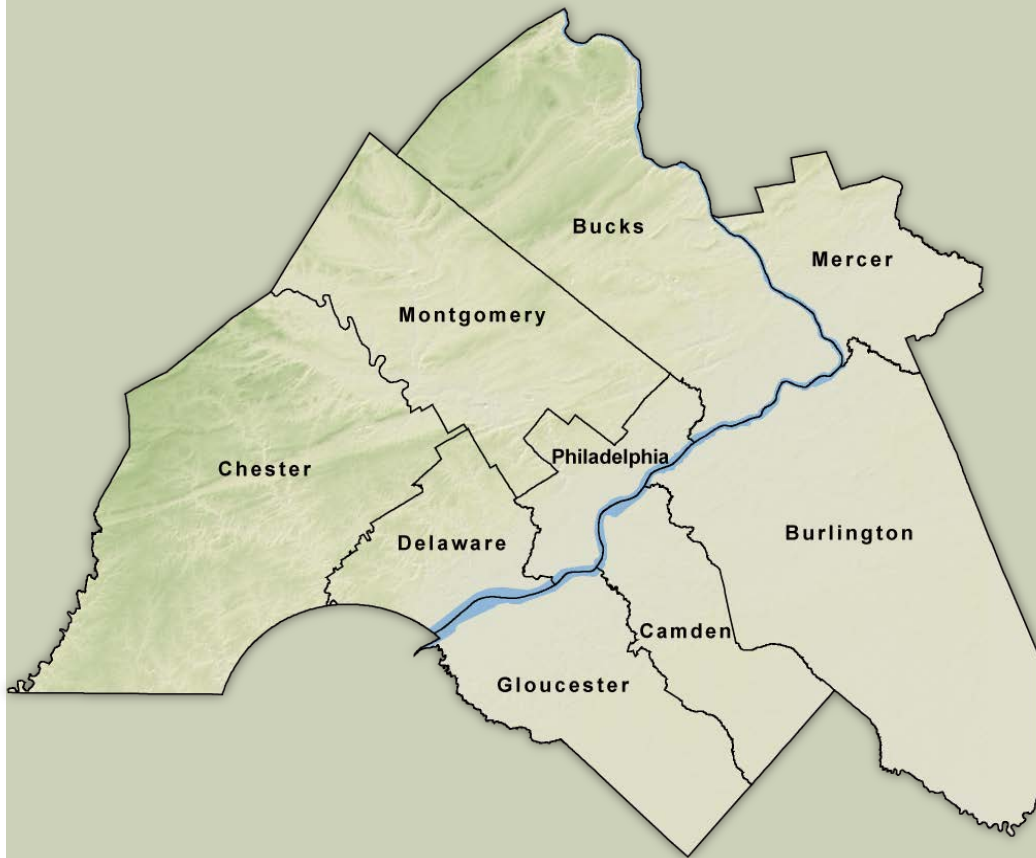
# DVRPC BY THE NUMBERS



Population =  
*5.5 million people*

Employment =

# DVRPC BY THE NUMBERS



Population =  
*5.5 million people*

Employment =  
*2.8 million jobs*

# DVRPC BY THE NUMBERS

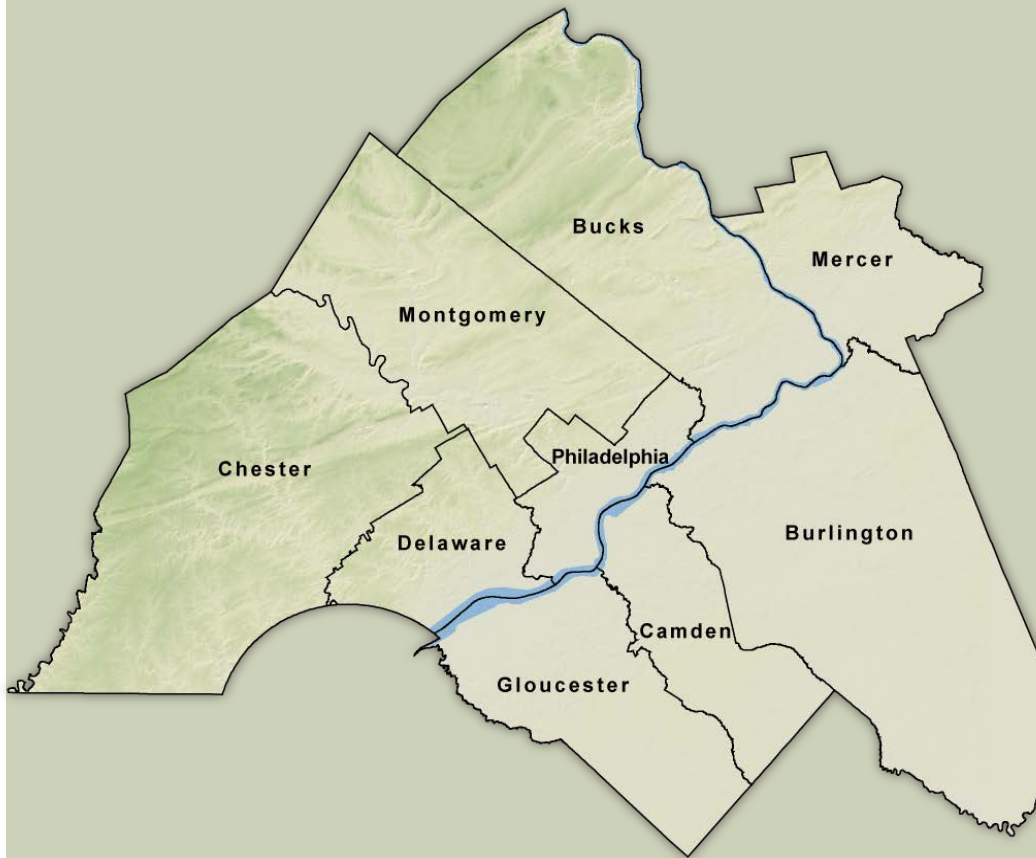


Population =  
*5.5 million people*

Employment =  
*2.8 million jobs*

Land area =

# DVRPC BY THE NUMBERS



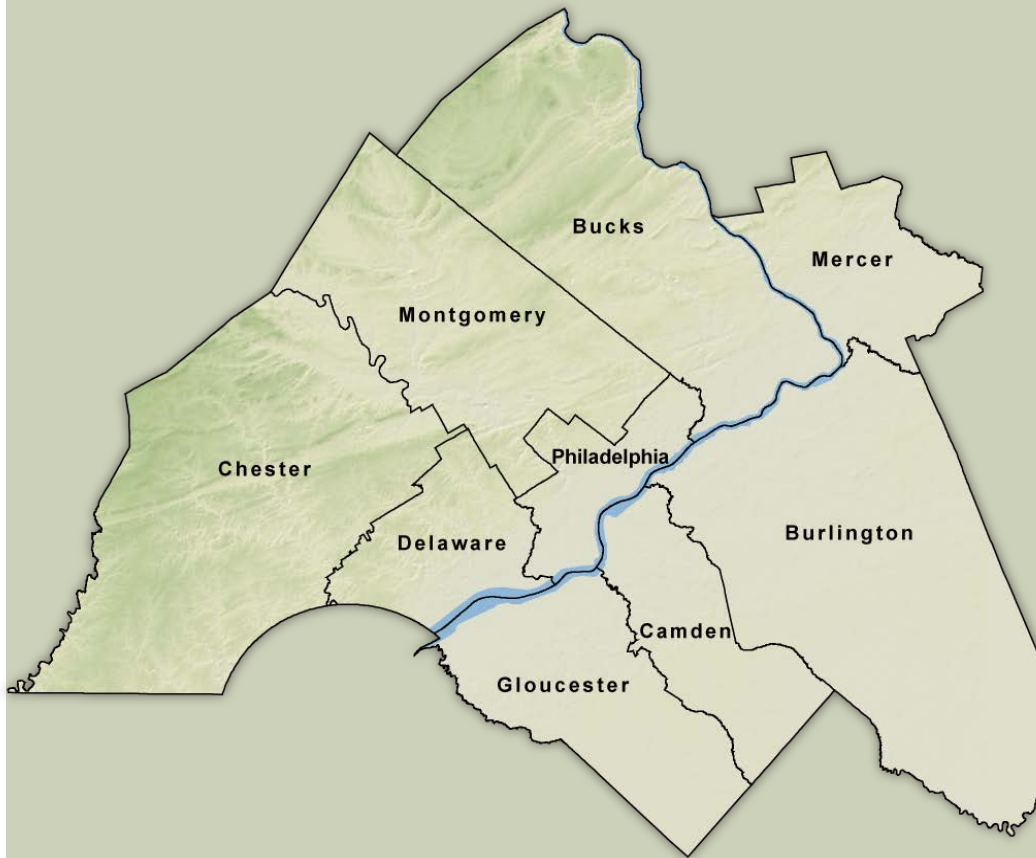
Population =  
*5.5 million people*

Employment =  
*2.8 million jobs*

Land area =  
*over 3,800 square miles*



# DVRPC BY THE NUMBERS



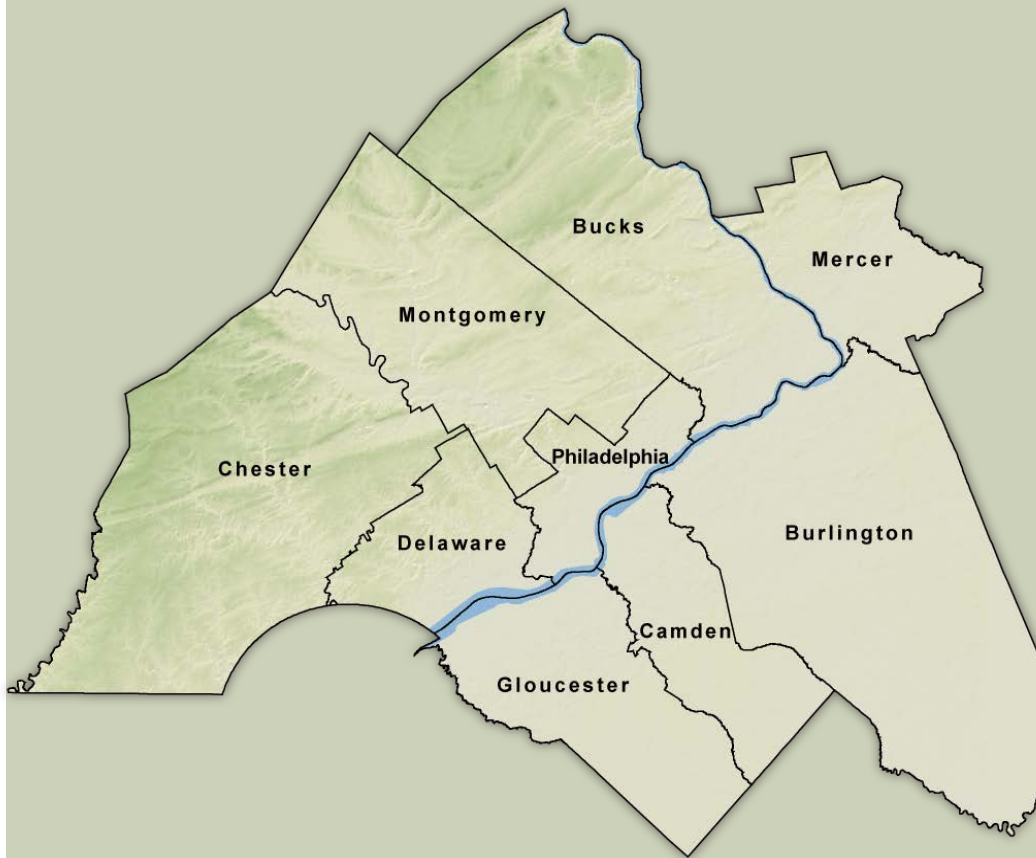
Population =  
*5.5 million people*

Employment =  
*2.8 million jobs*

Land area =  
*over 3,800 square miles*

Daily traffic =

# DVRPC BY THE NUMBERS



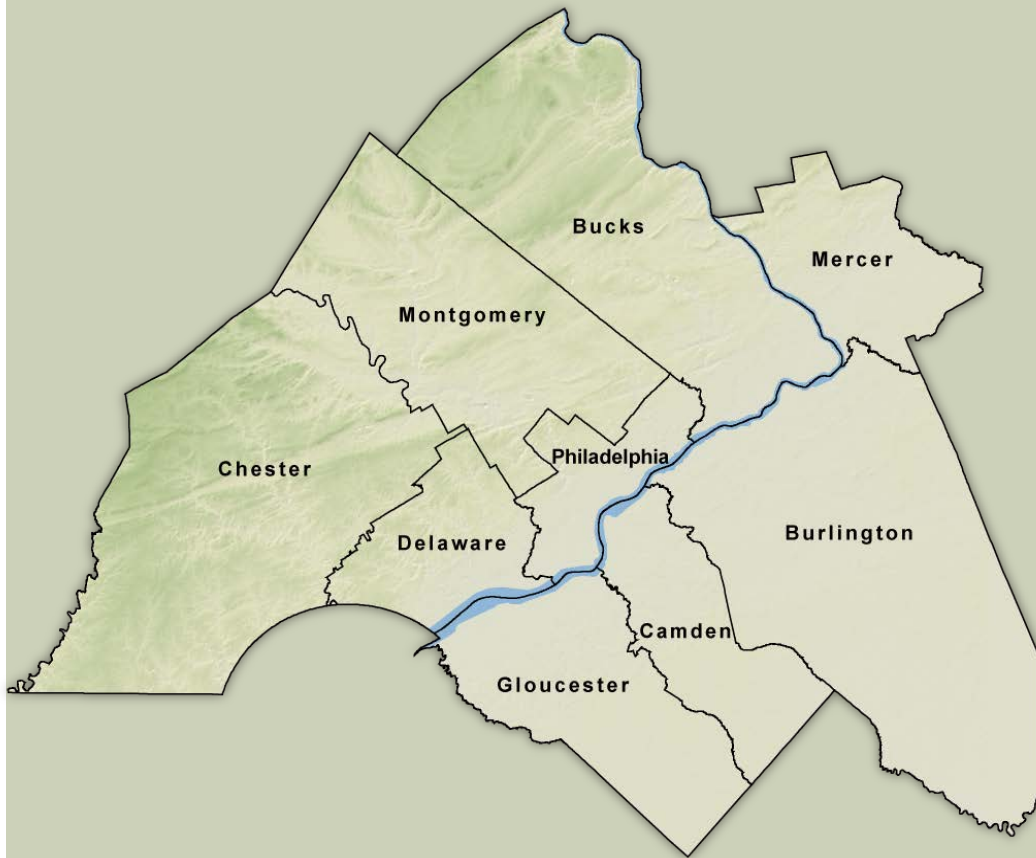
Population =  
*5.5 million people*

Employment =  
*2.8 million jobs*

Land area =  
*over 3,800 square miles*

Daily traffic =  
*112 million VMT*

# DVRPC BY THE NUMBERS



Population =  
*5.5 million people*

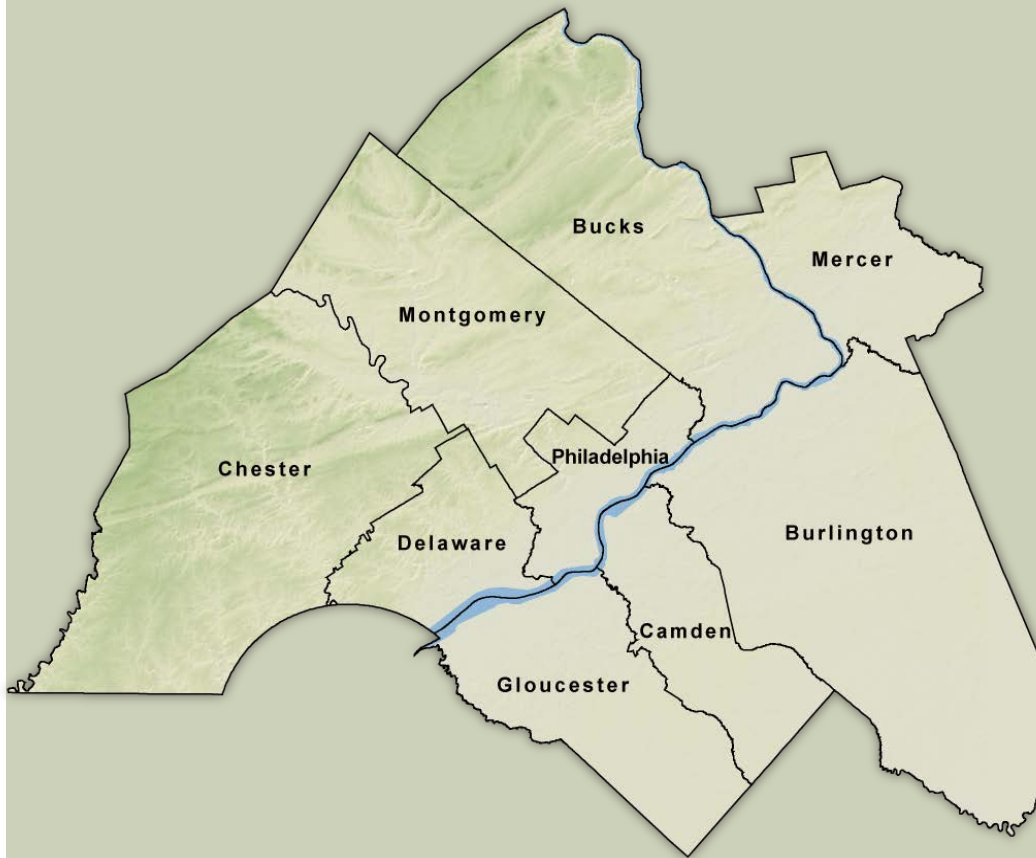
Employment =  
*2.8 million jobs*

Land area =  
*over 3,800 square miles*

Daily traffic =  
*112 million VMT*

Transit =

# DVRPC BY THE NUMBERS



Population =  
*5.5 million people*

Employment =  
*2.8 million jobs*

Land area =  
*over 3,800 square miles*

Daily traffic =  
*112 million VMT*

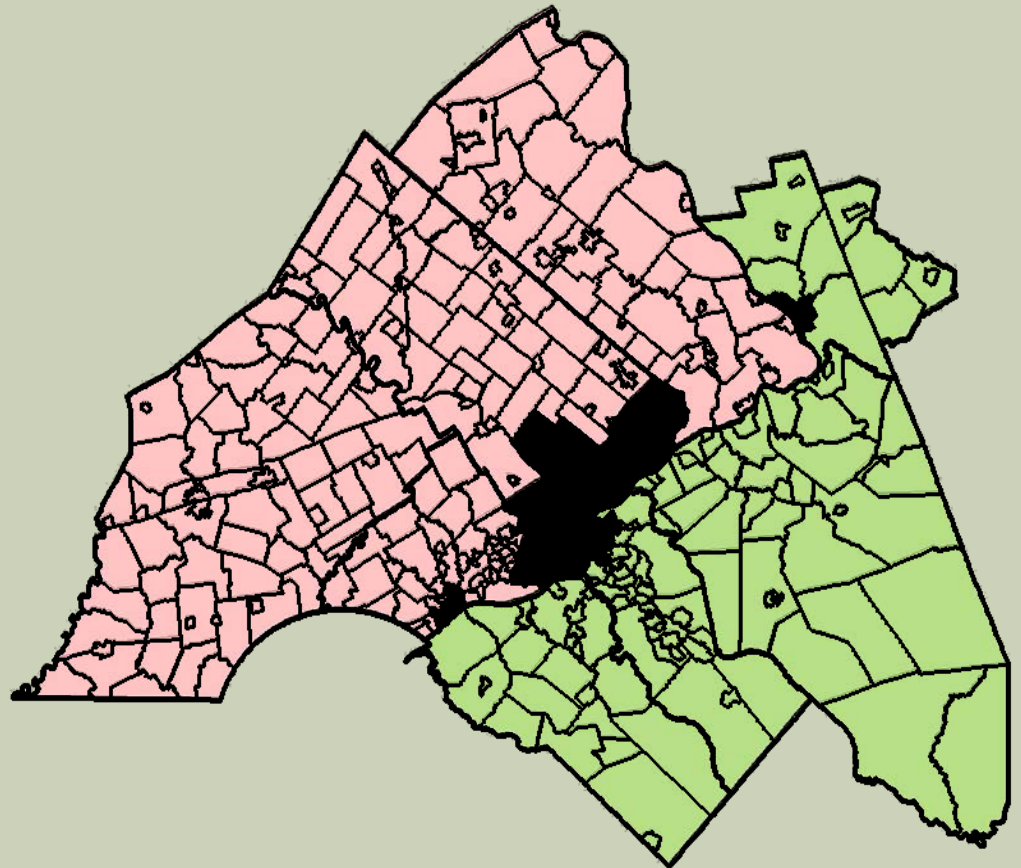
Transit =  
*1 million trips per day*

# THE REGION (30,000 FOOT VIEW)



# THE REGION (GROUND LEVEL VIEW)

- 352 Municipalities
- One Large City
- Three Small Cities
- Nine Counties
- Two States



# DVRPC BOARD STRUCTURE

## PA State

- Three Members

## NJ State

- Three Members

## Board

## PA Local

- Six Members

## NJ Local

- Six Members

# MPO FEDERAL REQUIREMENTS

- Annual Planning Work Program
- Long Range Plan - \$63B
- Transportation Improvement Program - \$7B
- Congestion Management Process
- Air Quality Program
- Public Participation Process



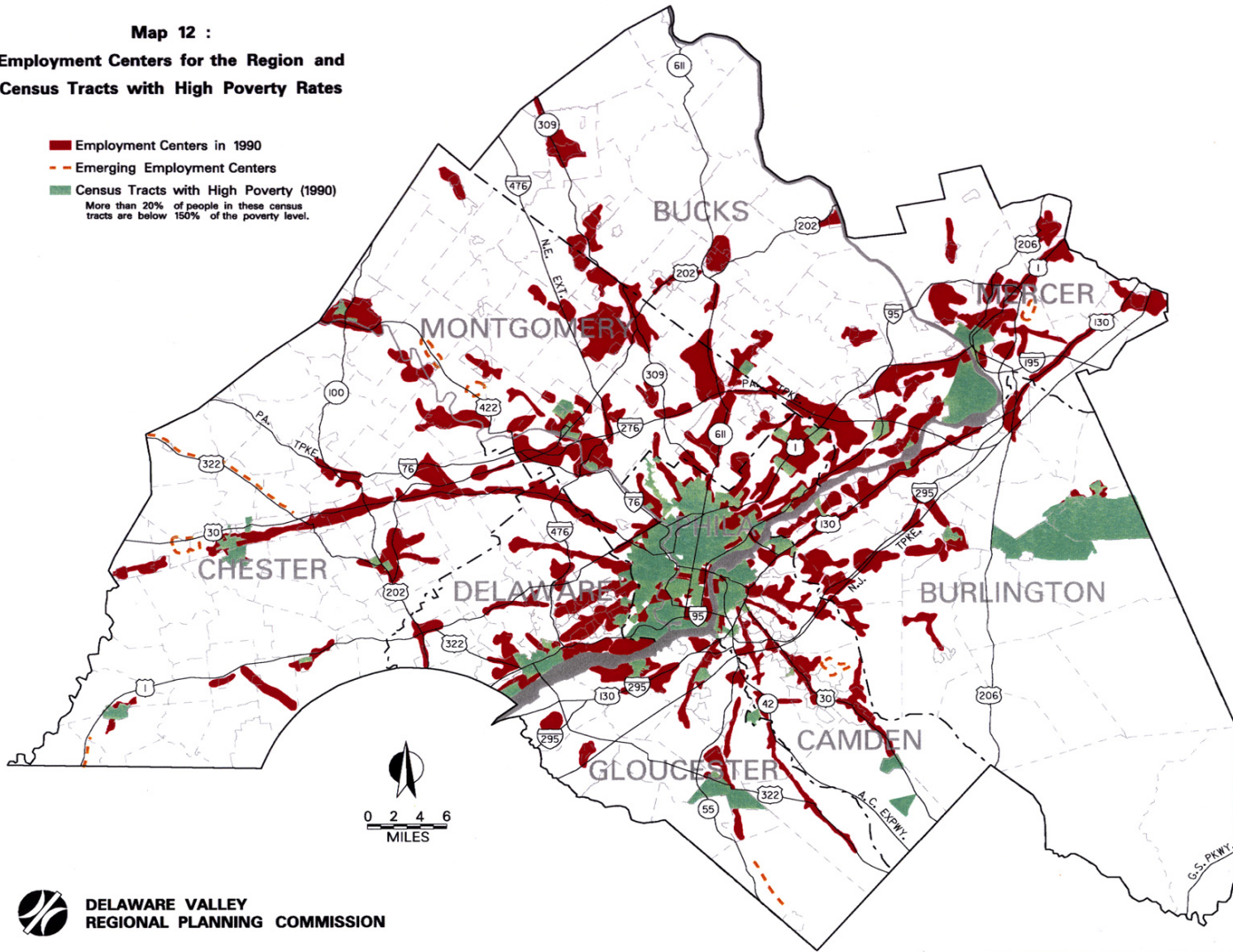
# MPO PLANNING FACTORS

- Economic Vitality
- Safety
- Security
- Accessibility and Mobility of People and Freight
- Environmental and Energy Sustainability
- Enhanced Integration and System Connectivity
- Efficient System Management and Operations
- Preservation of the Existing System
- Air Quality Program
- Resiliency and Reliability
- Travel and Tourism

# SOCIAL EQUITY

**Map 12 :**  
**Employment Centers for the Region and**  
**Census Tracts with High Poverty Rates**

- Employment Centers in 1990
- - - Emerging Employment Centers
- Census Tracts with High Poverty (1990)  
More than 20% of people in these census tracts are below 150% of the poverty level.



# CONNECTIONS 2040 REGIONAL PLAN



Manage Growth & Protect Resources



Create Livable Communities



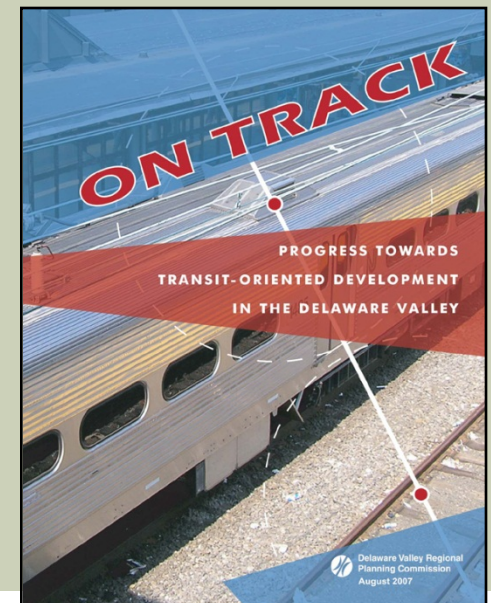
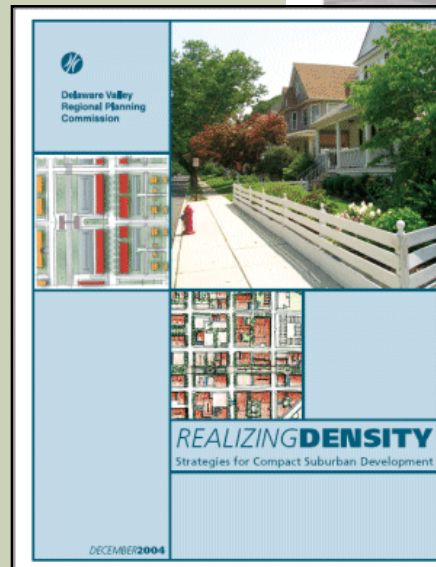
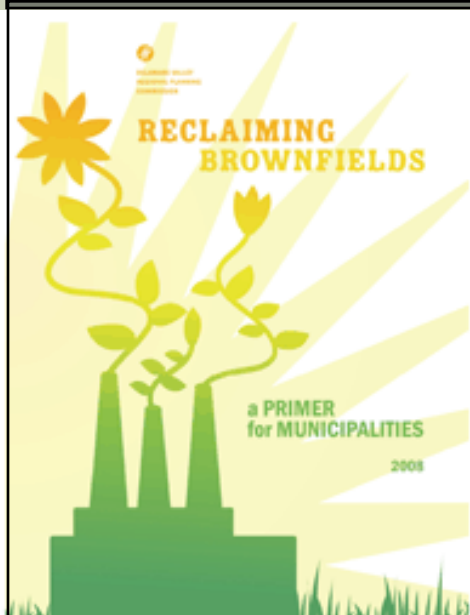
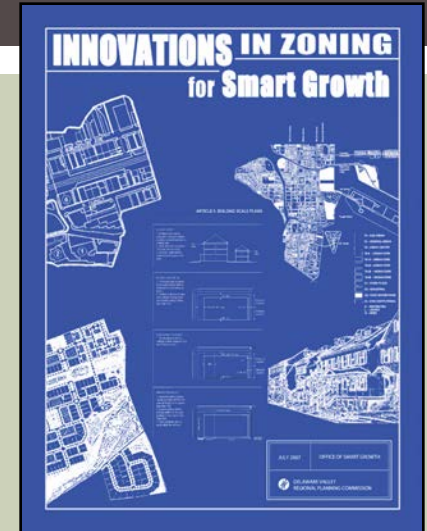
Build an Energy-Efficient Economy



Modernize the Multi-Modal Transportation System



# SMART GROWTH



# ENVIRONMENTAL PROTECTION

## ENVIRONMENTAL RESOURCE INVENTORY

for the TOWNSHIP of  
**ELK**  
GLOUCESTER COUNTY, NEW JERSEY



prepared by  
Delaware Valley  
Regional Planning  
Commission  
with  
The Environmental  
Commission of  
Elk Township

2008

## OPEN SPACE AND RECREATION PLAN

for the TOWNSHIP of  
**HARRISON**  
GLOUCESTER COUNTY, NEW JERSEY



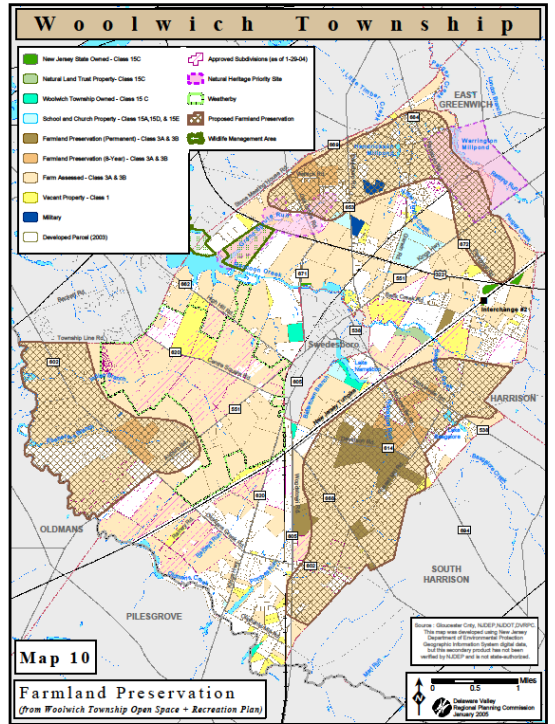
prepared by  
Delaware Valley  
Regional Planning  
Commission  
with  
The Open Space  
Committee of  
Harrison Township

NOVEMBER 2007

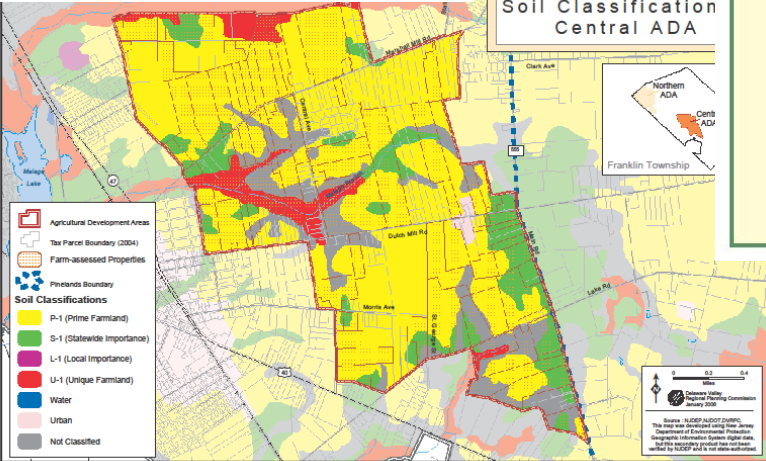
## Franklin Township Soil Classification Central ADA



Source: NJ DEP ADOT District 7  
This map was prepared using data from  
Department of Environmental Protection  
Geographic Information System files, and  
data supplied provided from the  
NJ DEP ADOT District 7 files.



Source: Gloucester County, NJ DEP ADOT District 7  
This map was developed using New Jersey  
Department of Environmental Protection  
Geographic Information System files, and  
data supplied provided from the  
NJ DEP ADOT District 7 files.



# TRAIL PLANNING AND DEVELOPMENT



**the Circuit**  
Greater Philadelphia's  
Regional Trail Network

- Existing Trails
- Trails in Progress
- Planned Trails



DELAWARE VALLEY  
REGIONAL  
PLANNING ORGANIZATION  
May 2012



# TRANSPORTATION

- Safety Planning
- Transit Planning
- Bicycle and Pedestrian Planning
- Transportation Operations Management
- Congestion Management
- Freight Planning
- Aviation Planning
- Corridor and Area Transportation Studies
- Travel Monitoring
- Travel Demand Model

# INFRASTRUCTURE INVESTMENT HIERARCHY

- **PRESERVE AND MAINTAIN**  
the Region's Infrastructure
- **IMPROVE THE OPERATION**  
of the Existing Transportation System
- **EXPAND THE SYSTEM**  
through Select, Appropriate Capacity Enhancements



# THANK YOU

**John Ward**  
**Deputy Executive Director**

**215-238-2899**

**[jward@dvrpc.org](mailto:jward@dvrpc.org)**



**PUBLIC**  
**PARTICIPATION**  
*task force*



Shoshana Akins  
Public Participation Planner  
E: [sakins@dvrpc.org](mailto:sakins@dvrpc.org)  
P: 215.238.2817



# Why public participation?

DVRPC includes public participation as a guiding tenet in our work: **to reach out to and engage as many members of the public as possible in the decision-making process.**

By engaging in constructive dialogue, decision-makers, planners, and the public can **share their opinions and mutually shape a vision** for their community, county, or region.



# Goals of the PPTF

- Provide **ongoing public access** to the regional planning and decision-making process;
- to **review** timely issues;
- to **serve as a conduit** to organizations and communities across the region for DVRPC's data and projects;
- and to assist the Commission in **implementing public outreach** strategies.



# Details of Membership

- Meetings are held every 6 weeks
- Stipends are given to members according to attendance at PPTF meetings
- New for 2016!
  - Attendance at RTC meetings
  - Attendance at committee meetings



# Opportunities

Serve on grant proposal review committee

**Example:** Transportation and Community Development Initiative (TCDI) funding to support growth in the individual municipalities of the Delaware Valley



# Opportunities

Co-host an event/meeting in  
your community

**Example:** Long-Range Plan  
(LRP) workshops to gather  
community opinion and  
perspective on “Future Forces”



# Opportunities

Serve on local plan/study  
advisory committee

**Example: Newton Lake Trail  
Feasibility Study**





# Opportunities

Forward DVRPC event and meeting announcements out to your various networks and organizational contacts

**Example:** Healthy Communities Task Force meeting on March 10<sup>th</sup> on creating age-friendly communities



# Opportunities

“Test-run” engagement and outreach exercises at PPTF meetings

**Example:** presentation by Equity Through Access (ETA) team in October 2015 meeting



# Results from Survey

- 70% indicated interest in “Community and/or Economic Development” and “Land use Planning”
- Active members with lots of hiking, biking, and open space
- Recommendation: green energy, smart growth, and bringing in diverse speakers



# Announcing!

2016 Leadership for PPTF

Chair: Peter Meyer

Vice Chair: Sadie Francis



# Next Meetings

- **March 22<sup>nd</sup>** Connection 2045 – LRP Workshop
- **May 15<sup>th</sup>** TIP Process and KOP Extension

