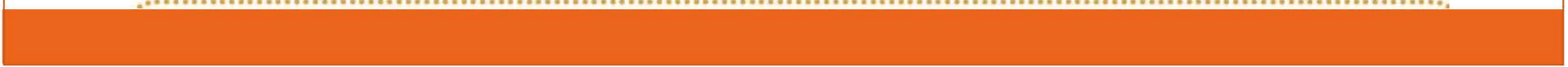


PHILADELPHIA
citizens
PLANNING INSTITUTE



I Love Where I Live!
That's Why I'm a Citizen Planner.



What is the CPI?

<http://citizensplanninginstitute.org>

[Home](#) | [Philadelphia City Planning Commission](#) | [Philadelphia2035](#) | [Zoning Matters](#) | [Twitter](#) | [Facebook](#) | [YouTube](#)

Sign up for Email Updates



[Planning Matters](#)

[Becoming a Citizen Planner](#)

[CPI Planning Classroom](#)

[About CPI](#)

[Contact Us](#)

[Grads in Action!](#)



Plan on it.

A Better Philadelphia

The Citizens Planning Institute's mission is to empower citizens to take a more effective and active role in shaping the future of their neighborhoods and of Philadelphia, through a greater understanding of city planning and the steps involved in development projects.

CPI Choice Neighborhoods Outreach Coordinator

Welcome Matthew da Silva, our AmeriCorps VISTA brought on to help develop

Welcome New Program Associate!

Ariel Diliberto is the new CPI Program Associate! Ariel is a CPI graduate and has a strong background in

Learn to Plan, Plan to Change

Change is inevitable. It will happen whether our community is prepared or not. Citizen Planners have the know-how to address change head-on and create a vision for their community's future. [READ MORE](#)

UPCOMING CLASSES (application required)

Fall Course Applications CLOSED
Classes in Oct/Nov
[Fall 2015 CPI Flyer](#)
[FALL 2015 CPI course summaries](#)

[Quotations from Graduates](#)

[CPI in a Page!](#)
[CPI Strategic Vision 2014](#)

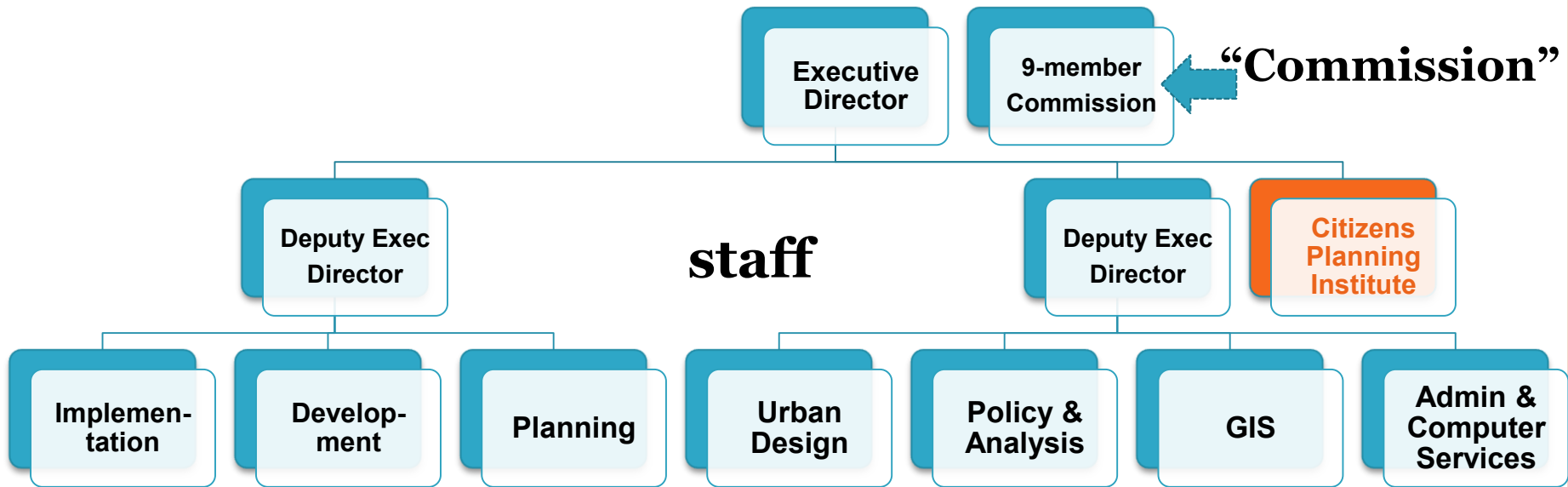
Power of the Plan For All
Tuesday, January 20, 2015-5:30-8pm
[Photos & Video](#)

[Jan20 PROGRAM Presentation slides](#)

Phila2035 Annual Update + Calendar 2015:
[phila2035.org](#)

[CPI Calendar page](#)

Philadelphia City Planning Commission



Philadelphia's Integrated Planning and Zoning Process



+



+



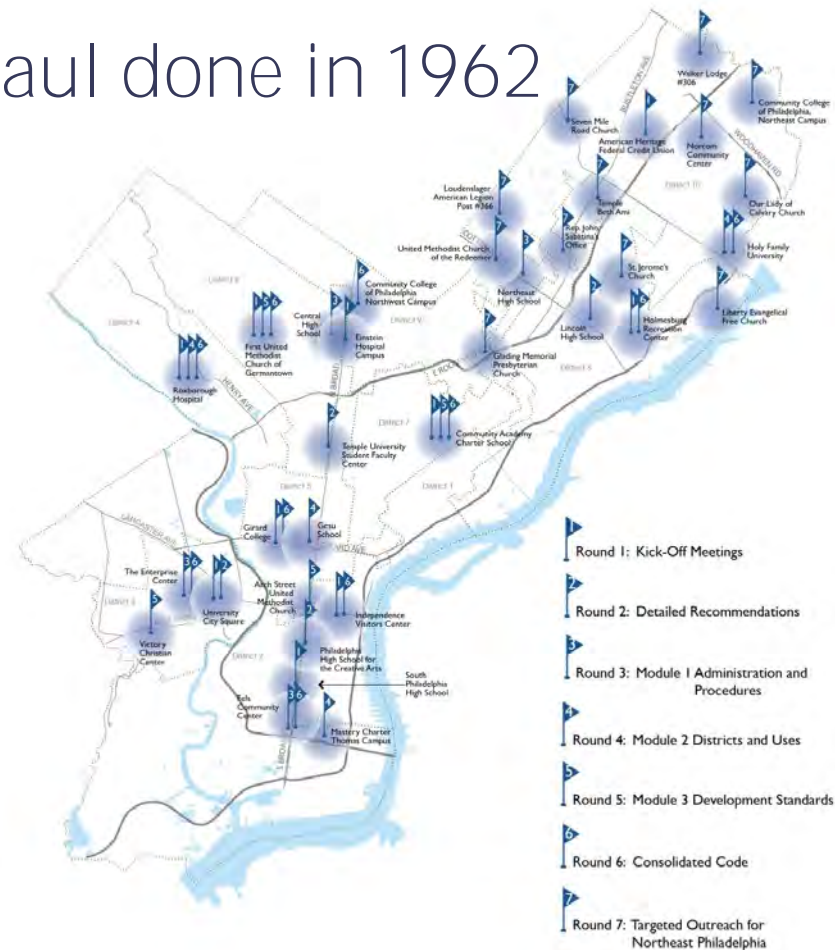
Receives **2013 National Planning Excellence Award**
for a **Best Practice**

from the **American Planning Association**



Zoning Code Reform

last zoning code overhaul done in 1962



Over 3,400 citizens were involved in the zoning code rewrite effort- 2007-2011.

Neighborhood Notice & Meetings



Formalizes the role of **community organizations** in the development process (**RCOs = Registered Community Organizations**);

Creates a standard for **notice and meetings**;

Applicable when application requires either:

- **Zoning Board approval** (variance/special exception) or
- **Civic Design Review**

Civic Design Review

Review of **LARGE** Projects that are likely to have a significant impact on the “public realm”

- Developer
- Community
- General Public

Process is **mandatory**-recommendations are **advisory**.



The “comprehensive” plan

“The City Planning Commission shall prepare and adopt, from time to time modify, and have the custody of a comprehensive plan of the City showing its present and planned physical development.”

- Philadelphia Home Rule Charter



Previous Comprehensive Plan: 1960

The “comprehensive” plan

1960 Comprehensive Plan shaped Philadelphia’s future

Penn Center



Transformative Ideas

Development of the Far Northeast

Center City Commuter Tunnel



Redevelopment of Society Hill



Population Shift

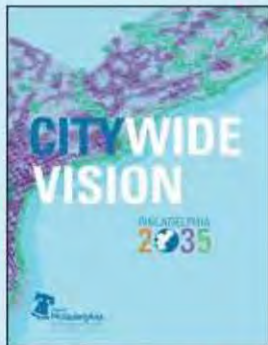
1960 Plan predicted 500,000 increase
Actually DECREASED by 500,000 people



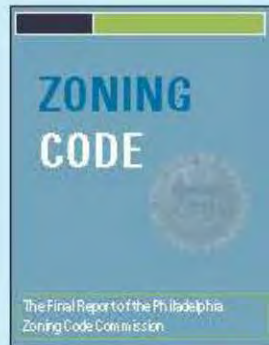
Integrated Planning & Zoning Phases

Phase I

Citywide planning and zoning



**ADOPTED
June 2011**



**ADOPTED
December 2011**

Phase II

District planning and remapping



Phase I: *The Citywide Vision*

PHILADELPHIA
2035

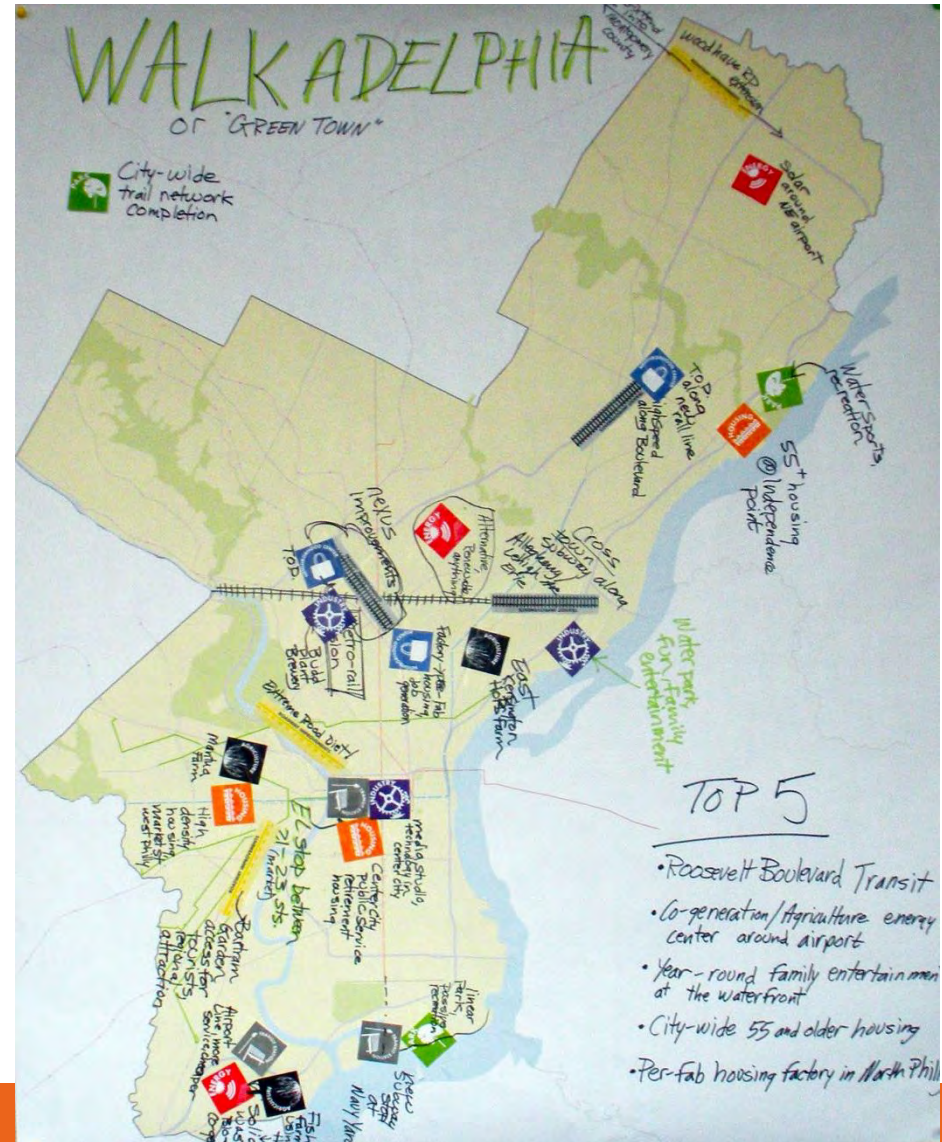


- 
- > Establish a 25 year vision for the City of Philadelphia
 - > Broad citywide goals and recommendations
 - > Guide City budgets, collaborations, and investments in the built environment
 - > Make development patterns more predictable for citizens, community groups, developers and investors

Citywide Vision – Public Outreach



- Eight public, citywide meetings
- Over 220 participants participated
- 31 visions of Philadelphia created
- 850+ big ideas

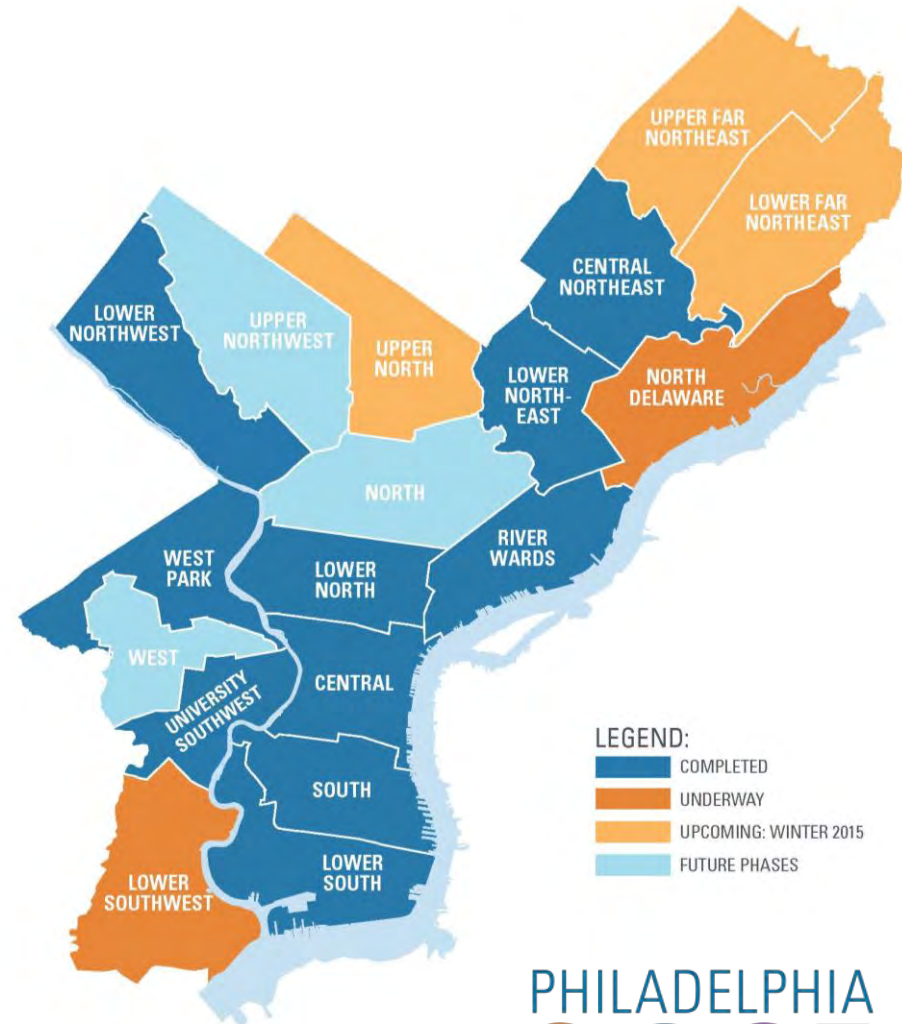


Phase II: *District Plans*

- Shorter time frame than the *Citywide Vision*
- Apply the recommendations of the *Citywide Vision* to specific areas

Focus on:

- City-owned land and assets
- Land use and zoning recommendations
- Focus Areas



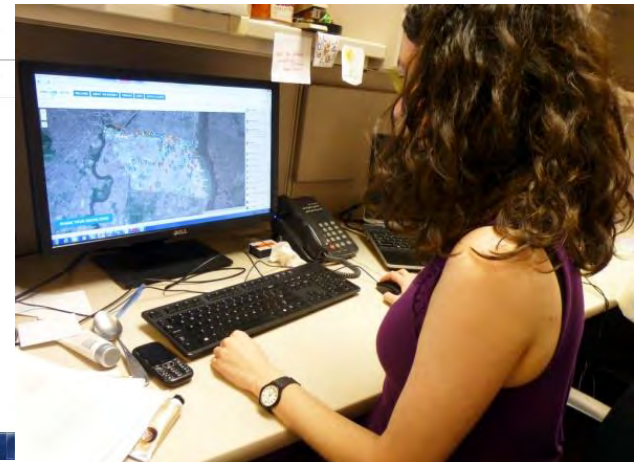
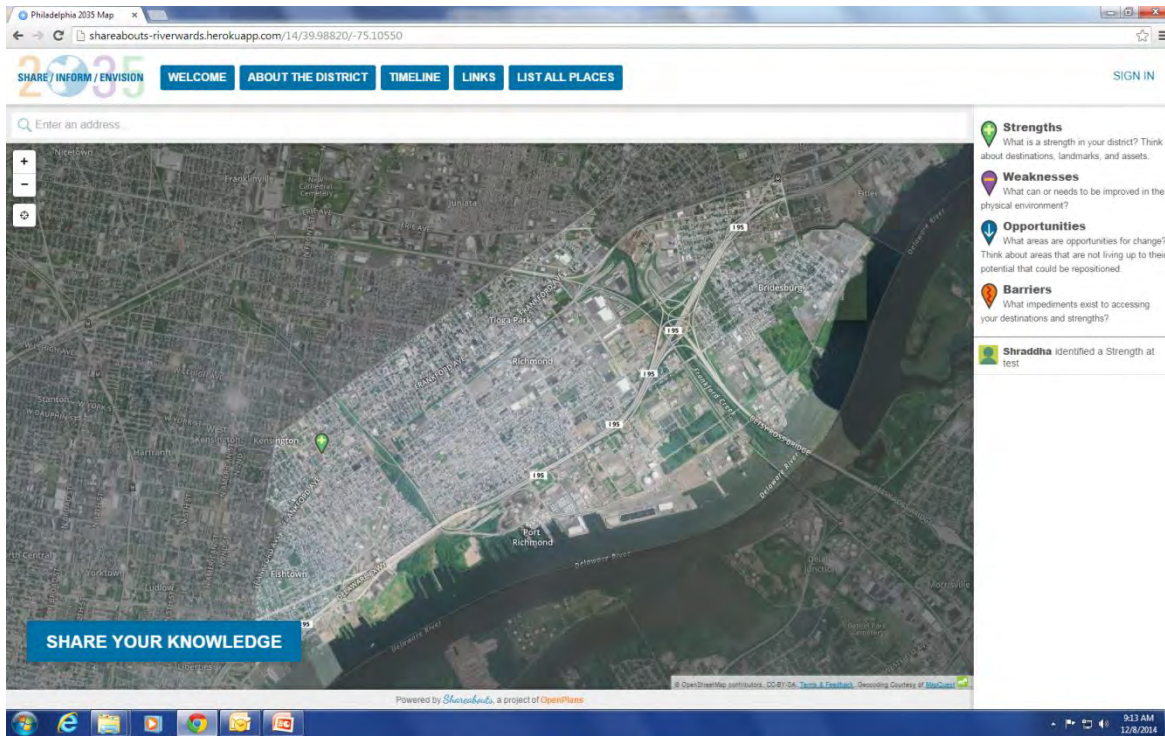
Citizen Participation is a KEY part of planning!





Online Engagement Tool

www.phila2035.org



Online engagement tool

THRIVE

with new growth
 and opportunity,

CONNECT

to the region and the
 world, and

RENEW

its valued resources
 for future generations.

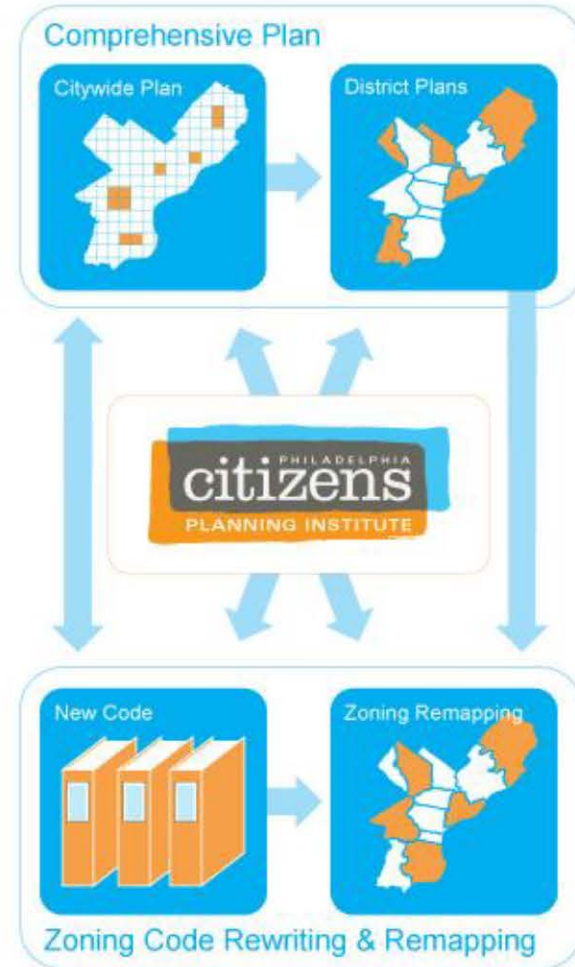
The cover features a central graphic with the Philadelphia 2035 logo and the slogan "POWER OF THE PLAN FOR ALL". Surrounding the logo are circular images of various Philadelphia neighborhoods, each labeled with its name: Lower Northwest, Lower Northeast, West Park, Central Northeast, Lower South, Lower North, Central, University Southwest, and Central. A central logo also includes the text "Part and Parcel of the City of Philadelphia" and "Partners for the future".

PHILADELPHIA 2035
 POWER OF THE PLAN FOR ALL
 ANNUAL UPDATE + 2015 CALENDAR

2011 2012 2013 2014 **2015** 2016 2017 2018 2019 2020 2021 2022 2023 2024 2025 2026 2027 2028 2029 2030 2031 2032 2033 2034 **2035**

PREPARED BY THE PHILADELPHIA CITY PLANNING COMMISSION

CPI Role in Integrated Process



CITIZENS PLANNING INSTITUTE

Mission: The Citizens Planning Institute empowers residents to be more effective advocates in neighborhood and citywide planning.

The Citizens Planning Institute (CPI) has been offering biannual classes since 2010 to educate Philadelphians about city planning and encourage residents to learn more about creating a more livable and sustainable Philadelphia. CPI has evolved into a recognized brand nationally through its classes, public workshops and presentations.

Successful graduates completing the 15 required hours of classes receive a Certificate of Completion as a Citizen Planner. To date, 330 participants represent 17 of the 18 planning districts in the city.

In 2015, the program tripled its staff with a new Program Associate position and a 3-year VISTA position. A new initiative called "Neighbors Helping Neighbors" aims to develop a Citizen's Toolkit, which along with a brand new CPI website, will launch in 2016.

330 PARTICIPANTS

120 NEIGHBORHOODS REPRESENTED

470+ COMMUNITY ORGANIZATIONS REPRESENTED

900 WORKSHOP PARTICIPANTS

CLASSES OFFERED

99 VOLUNTEER INSTRUCTORS/PANELISTS

"This class was great. It actively broadened my perspective of what is important to residents in their neighborhoods and how all these neighborhood activities can weave together for city-wide improvement."

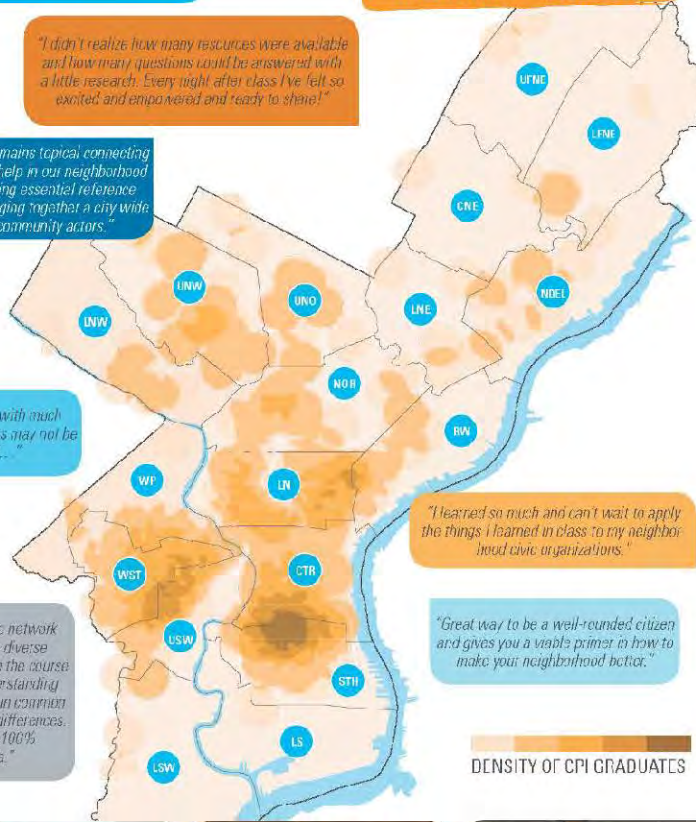
"I didn't realize how many resources were available and how many questions could be answered with a little research. Every night after class I've felt so excited and empowered and ready to share!"

"I find that CPI remains topical connecting us to issues that help in our neighborhood building, providing essential reference material, and bringing together a city-wide network of community actors."

"Eye-opening... with much information citizens may not be aware of..."

"The opportunity to network with people from diverse neighborhoods made the course invaluable for understanding how much we have in common despite geographic differences. It truly felt like 100% Philadelphia."

PHILADELPHIA
citizens
PLANNING INSTITUTE



"I learned so much and can't wait to apply the things I learned in class to my neighborhood civic organizations."

"Great way to be a well-rounded citizen and gives you a viable primer in how to make your neighborhood better."



2016

MON	TUE	WED	THU	FRI	SAT
		01	02	03	04

Sign up for Email Updates



[Planning Matters](#)

[Becoming a Citizen Planner](#)

[CPI Planning Classroom](#)

[About CPI](#)

[Contact Us](#)

[Grads in Action!](#)



Plan on it.
A Better Philadelphia
The Citizens Planning Institute's mission is to empower citizens to take a more effective and active role in shaping the future of their neighborhoods and of Philadelphia, through a greater understanding of city planning and the steps involved in development projects.

CPI Choice Neighborhoods Outreach Coordinator

Welcome Matthew da Silva, our AmeriCorps VISTA brought on to help develop CPI's role in the North Central Transformation Plan- the focus of a \$30M HUD grant leveraging millions of dollars in investments. We'll be posting updates here!

Welcome New Program Associate!

Ariel Diliberto is the new CPI Program Associate! Ariel is a CPI graduate and has a strong background in community outreach and program management.

We received many highly qualified responses to our search to fill this new position. Thank you!

Learn to Plan, Plan to Change

Change is inevitable. It will happen whether our community is prepared or not. Citizen Planners have the know-how to address change head-on and create a vision for their community's future. [READ MORE](#)

UPCOMING CLASSES (application required)

Fall Course Applications CLOSED
Classes in Oct/Nov

[Fall 2015 CPI Flyer](#)

[FALL 2015 CPI course summaries](#)

Quotations from Graduates

[CPI in a Page!](#)

[CPI Strategic Vision 2014](#)

Power of the Plan For All!
Tuesday, January 20, 2015- 5:30-8pm

[Photos & Video](#)

[Jan20 PROGRAM Presentation slides](#)

Phila2035 Annual Update + Calendar 2015:
[phila2035.org](#)

[CPI Calendar page](#)

Citizen Planners Grads in Action!



Joyce Smith- “Project Reclaim”

- “Viola Street Residents Association and I have grown together since my first CPI class. I had no idea how useful the CPI material would remain to be. I am making real connections as we chart our path to realize our goal.”

DeWayne Drummond, President of new civic assoc.- Mantua Now!

- “Plan or be planned for...This is my community...The people are coming out and have a voice, a strong voice.”





Wharton Student Life Center
January 2014



Spring 2014 Cohort

Graduations!

Center for Architecture
June 2013

Independence Visitor Center
January 2015

Fall 2014 Cohort





PHILADELPHIA
2035

January 20, 2015



. ..”my sense of ‘community’ expanded to include the whole city.“

. ..”I learned a ton, and the program has inspired me to build new connections in my community and to think about ways that I can play a bigger role in developing it. “

...“**I loved interacting with people from across the city**, hearing from a myriad of highly engaging experts, and starting to apply the perspectives I gained from the CPI courses to my own neighborhood. ..“

...“I was very inspired by the various groups from neighborhoods that I never heard of before and their ability to make so many **positive changes** within this city. It was great to be able to meet with such positive thinking people...”



Core Sessions



Electives

Requirements & Class Structure



Requirements & Course Structure



- **Core Course Sessions**
(required)

- ✦ 1-Planning in the City
- ✦ 2-Land Use & Zoning
- ✦ 3-The Development Process

- **Workshop-** (optional)

- **Elective Sessions**
(2 of 3 required)

- ✦ Creative Placemaking
- ✦ Urban Green Spaces
- ✦ Community Safety Through Design

2015 Workshop Participants



My Name: _____

Neighborhood(s): _____

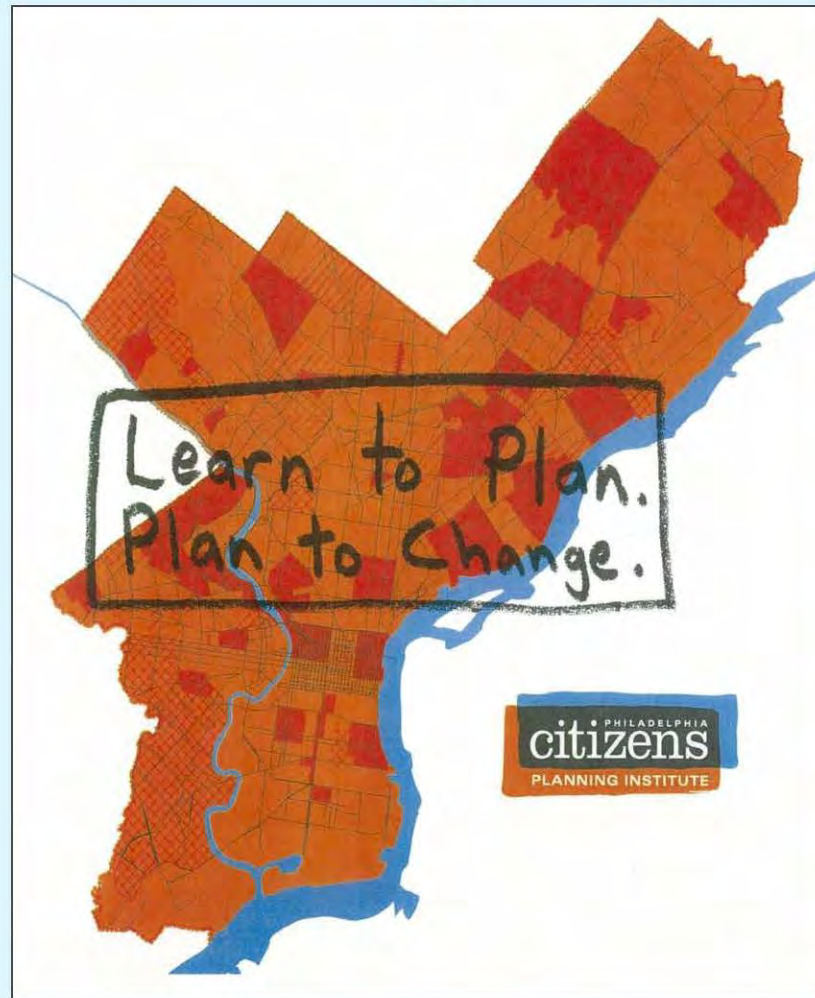
- Buildings
- Streetscape
- Infrastructure - streets, utilities
- Parking & transit
- Planning, zoning

- People - skills
- Economic
- Institutional
- Real Estate - inventories
- Technology - e-Connections

- Safety issues
- Cleaning programs
- Public spaces
- Gardens, parks



Neighborhood Planning Workbook



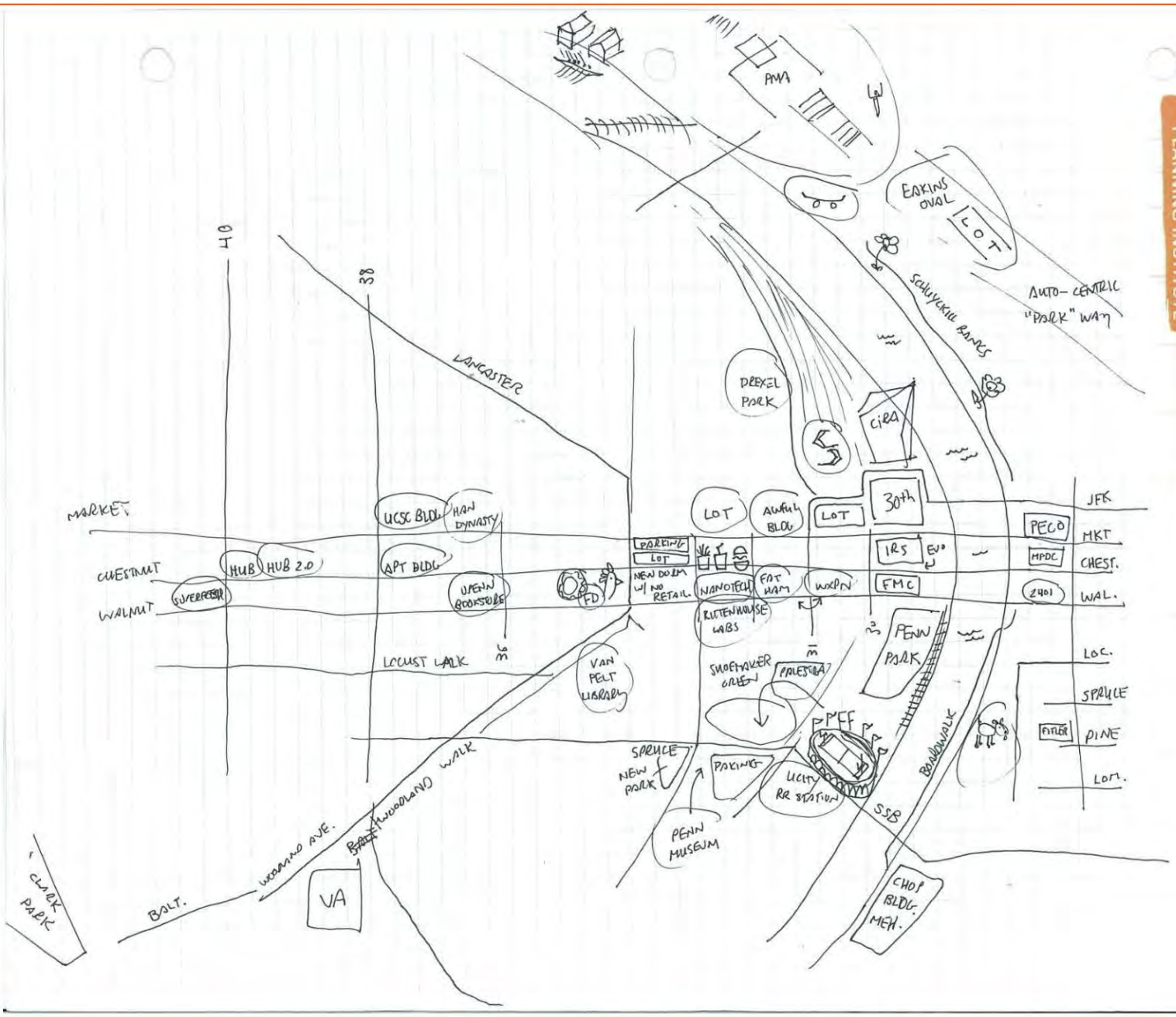


Describe your experience.



**Nothing is experienced
by itself,
but always in relation
to its surroundings,
the sequences of events leading up
to it,
the memory
of past experiences.**

– Kevin Lynch (1960)



CLARK PARK

40

38

LANCASTER

MARKET

CHESTNUT

WALNUT

WORMO AVE.

BOLT.

VA

BROAD

MUHAMMAD WALK

UCSB BLDG

HAN DYNASTY

HUB HUB 2.0

APT BLDG

OPEN BOOKSTORE

LOCUST WALK

FD

VAN PELT LIBRARY

SPRUCE NEW PARK

PENN MUSEUM

LOT

ALWAYS BLDG

FAT WARM

NANOTECH

WOLFEN

RUTENHOUSE LABS

SMOFTAKER GARDEN

PROSPECT

PARKING

UCITY RR STATION

SSB

LOT

30th

LOT

IRS

FMC

PENN PARK

BROADWALK

CHOP BLDG. MEN.

JFK

MKT

CHEST.

WAL.

LOC.

SPRUCE

PINE

LOT.

AUTO-CENTRAL "PARK" WAY

EAKINS OVAL

LOT

SCHUYLKILL RAMES

DREXEL PARK

CIRA

UCSB BLDG

HAN DYNASTY

HUB HUB 2.0

APT BLDG

OPEN BOOKSTORE

LOCUST WALK

FD

VAN PELT LIBRARY

SPRUCE NEW PARK

PENN MUSEUM

LOT

ALWAYS BLDG

FAT WARM

NANOTECH

WOLFEN

RUTENHOUSE LABS

SMOFTAKER GARDEN

PROSPECT

PARKING

UCITY RR STATION

SSB

LOT

30th

LOT

IRS

FMC

PENN PARK

BROADWALK

CHOP BLDG. MEN.

JFK

MKT

CHEST.

WAL.

LOC.

SPRUCE

PINE

LOT.

AUTO-CENTRAL "PARK" WAY

EAKINS OVAL

LOT

SCHUYLKILL RAMES

DREXEL PARK

CIRA



Interest in CPI:

San Antonio

Omaha

Charlotte, N.C.

Chattanooga

Planning Educators from China

Baton Rouge