



TRANSPORTATION & COMMUNITY
DEVELOPMENT INITIATIVE

FY 2015 Program



March 4, 2013



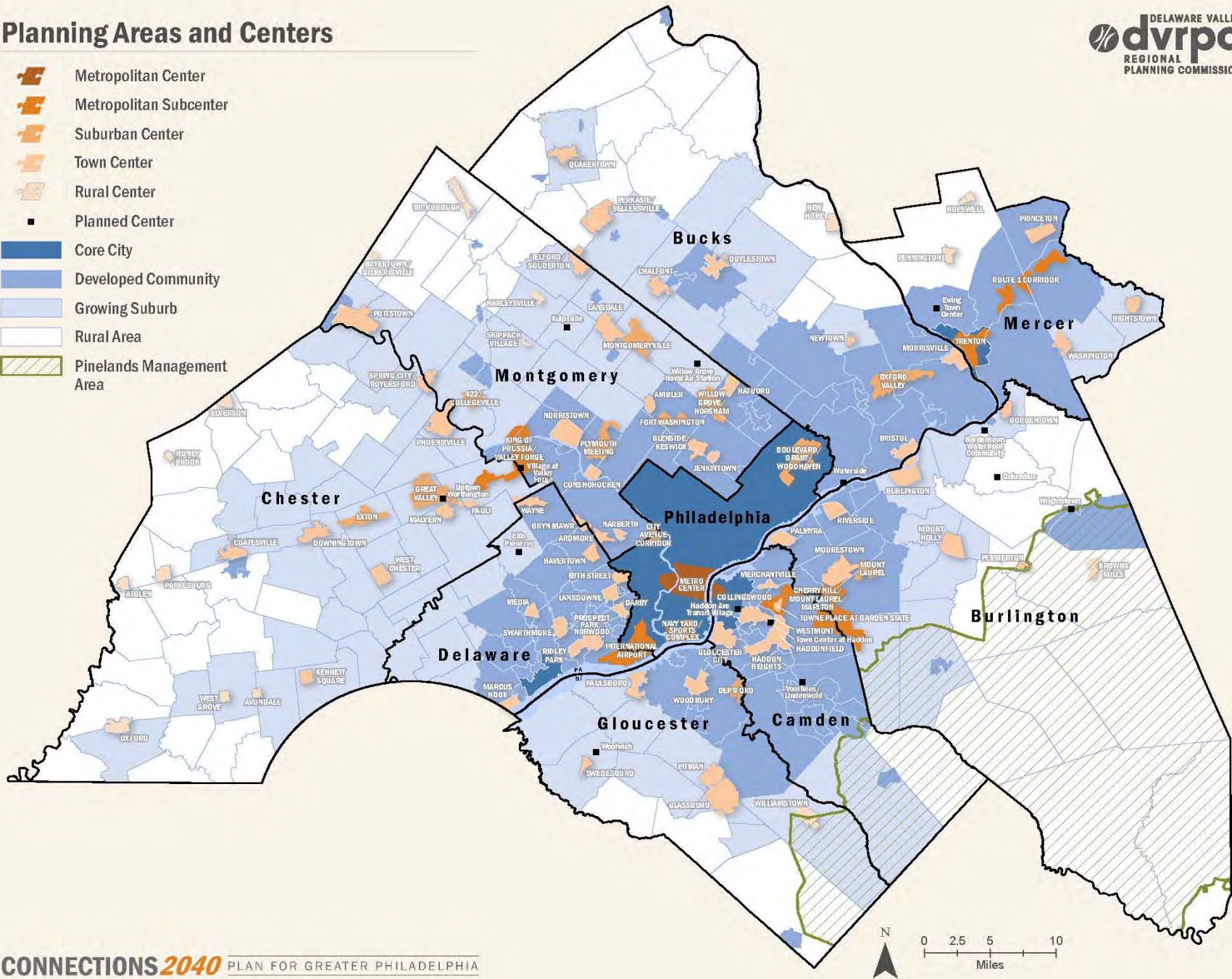
What is TCDI?

- Support smart growth in the individual municipalities of the region.
- Implement the goals outlined in *Connections 2040*.



Planning Areas and Centers

-  Metropolitan Center
-  Metropolitan Subcenter
-  Suburban Center
-  Town Center
-  Rural Center
-  Planned Center
-  Core City
-  Developed Community
-  Growing Suburb
-  Rural Area
-  Pinelands Management Area



Eligible Activities

- ▶ Marketing and Outreach
- ▶ Multi-Municipal Planning
- ▶ Community and Economic Development
- ▶ Transportation/Early Conceptual Design
- ▶ Land Use Regulation
- ▶ Multi-Municipal Planning
- ▶ Adaptive Reuse
- ▶ Sustainability
- ▶ Capacity Building

Not allowed: Construction, final engineering, and BID documents.

TCDI Program Funding

- ▶ Combination of state transportation dollars and federal STP funds.
- ▶ Planning amounts voted upon by DVRPC Board of Commissioners.
- ▶ \$1 million annually for PA and \$500 K annually for NJ.
- ▶ Solicitation is done every two years.



Project Criteria

- ▶ Does the project implement the goals of *Connections 2040*?
- ▶ Does the project enhance the existing transportation network?
- ▶ Is there a clear implementations strategy?
- ▶ Is the applicant ready to proceed and be complete in 24 months?
- ▶ Is the project consistent with local, regional, and state plans?
- ▶ What is the project's ability to encourage future development?
- ▶ Is there a clear problem statement?

Project Selection

- ▶ Review committee (NJ and PA)
- ▶ Committee members: DOTs, Office of Community Development, transit agencies, nonprofit, PPTF, and institutional.
- ▶ Rank projects based on criteria.
- ▶ Committee meets to discuss the rankings. (July 2014)
- ▶ Announcement in September 2014

Contracting

- ▶ Administrative Requirements
- ▶ Timeframes must be adhered
- ▶ Non-compliance results in the removal of your TCDI funds.



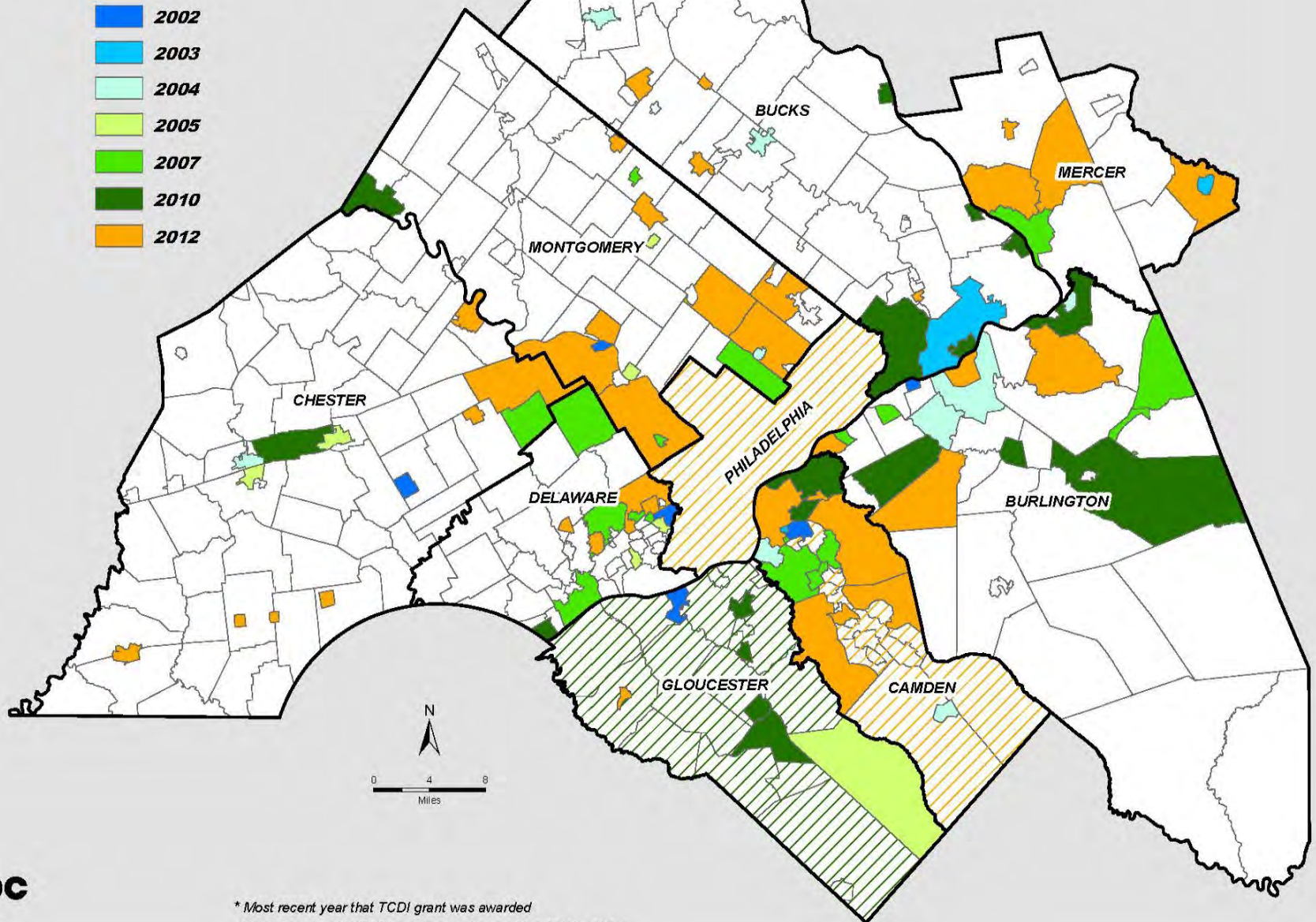
Project Implementation

- ▶ All TCDI project provide a resolution of adoption or acceptance by the Governing Body.
- ▶ Will withhold 10% of funds if not adopted.
- ▶ Must undergo the same application process and meet all requirements.
- ▶ Construction dollars not guaranteed. May receive priority status for TIP dollars.

TCDI Investment

- ▶ Over \$13 million dollar investment by DVRPC since 2002.
- ▶ \$3 million dollar investment made to the transportation network.
- ▶ Since 2002, over \$250 million have been leveraged by local, county, state, and federal partners.
- ▶ Largest investment in City of Philadelphia (\$2.5 million).
- ▶ Montgomery County has been awarded the most projects.
- ▶ Gloucester County has leveraged the most money with least number of awarded communities.

TCDI Investments in the DVRPC Region*



March 2012

* Most recent year that TCDI grant was awarded

Note: County-wide TCDI grants are shown with a hatch pattern



TRANSPORTATION & COMMUNITY
DEVELOPMENT INITIATIVE

Thank You!

For More Information:

Karen P. Cilurso, AICP, PP
Manager, Community Revitalization
Office of Smart Growth



215.238.2876 • kpcilurso@dvrpc.org

<http://www.dvrpc.org/tcdi>





CONNECTIONS *2040*

PLAN FOR GREATER PHILADELPHIA

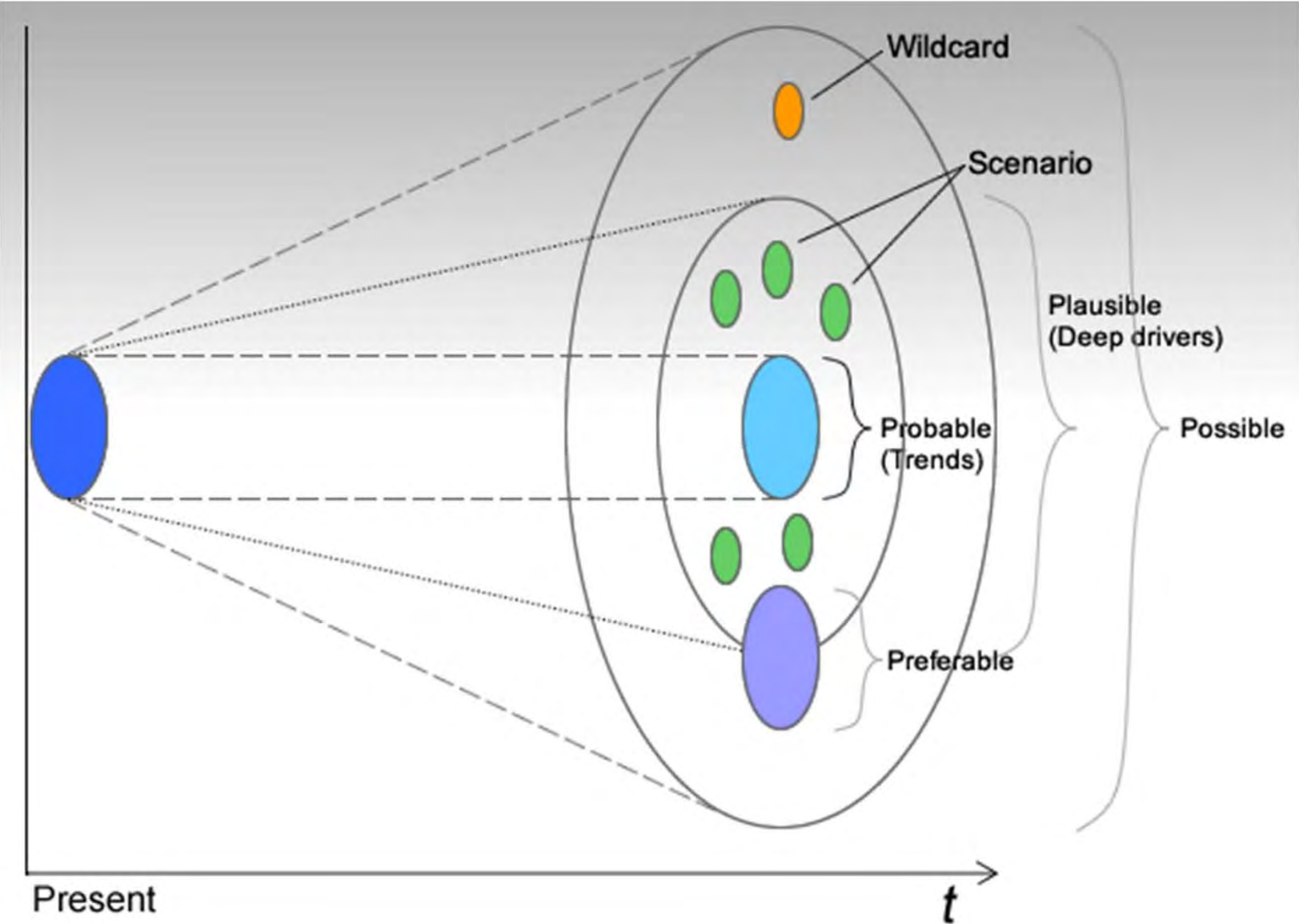
fostering sustainability, equity and innovation

THE FUTURE OF SCENARIO PLANNING

Public Participation Task Force I March 4, 2014

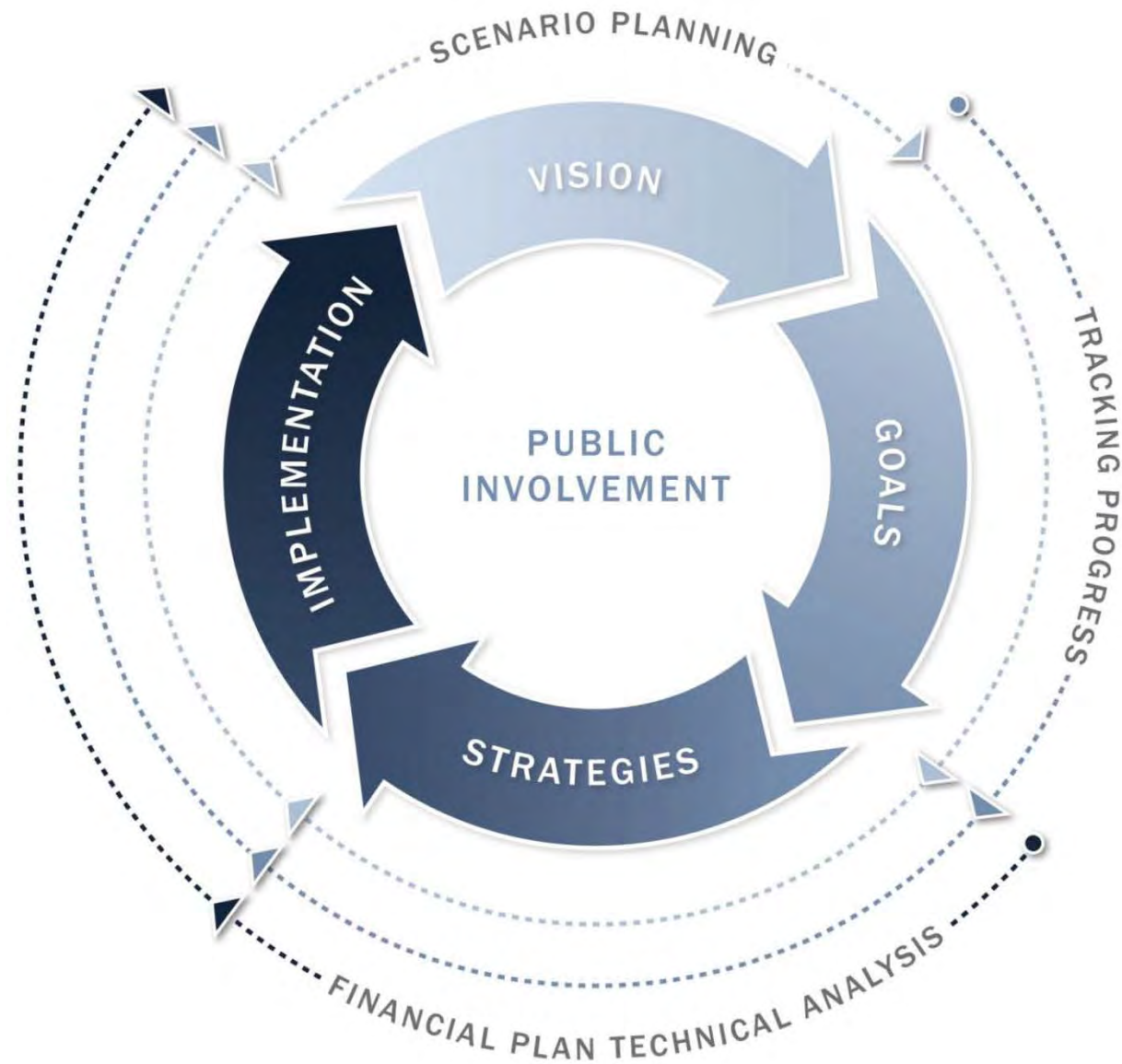


SCENARIO PLANNING

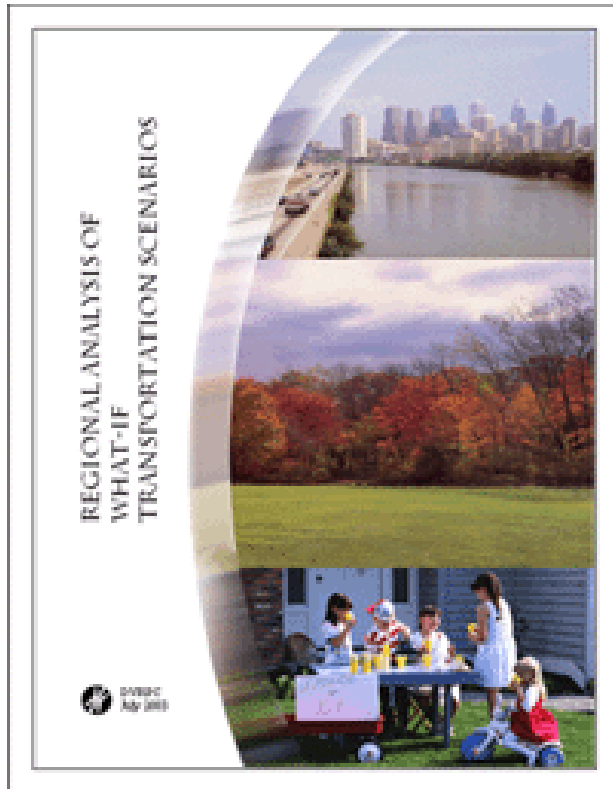


Source: www.quesucede.com

LONG-RANGE PLANNING



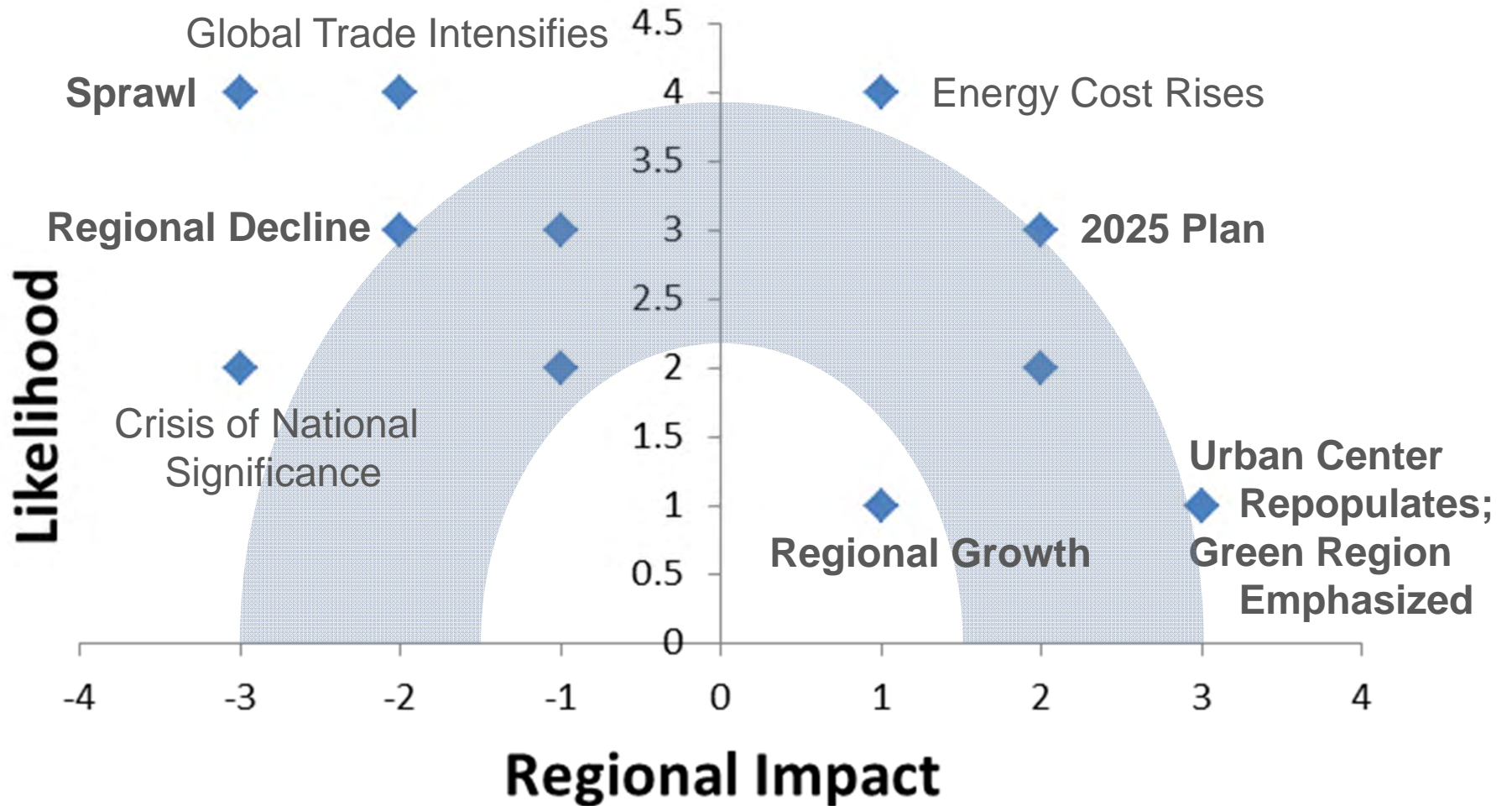
“WHAT-IF” TRANSPORTATION SCENARIOS



2003, Publication
#03020

- **2025 Plan**
- **Urban Center Repopulates**
- **Sprawl Accelerates**
- **IT amenities grow**
- **Regional economy strengthens**
- **Global trade intensifies**
- **Energy cost rises**
- **Infrastructure Investment Expands**
- **In-migration increases**
- **Out-migration increases**
- **Green region emphasized**
- **Crisis of national significance occurs**

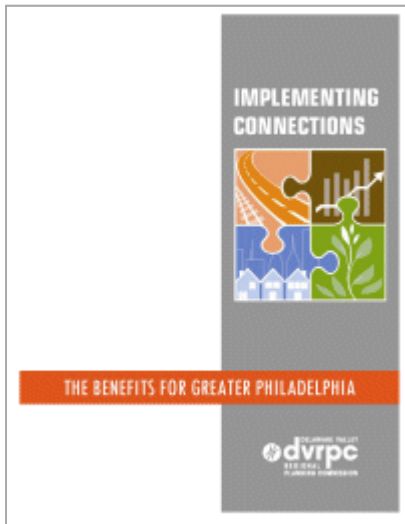
“WHAT-IF” TRANSPORTATION SCENARIOS



DVRPC LAND USE SCENARIOS



- Making the Land Use Connection: Regional What-if Scenario Analysis (2008, Pub #08059)



- Implementing Connections: The Benefits For Greater Philadelphia (2011, Pub #11045)

CONNECTIONS 2040



2012, Pub. #13004

www.dvrpc.org/choicesandvoices

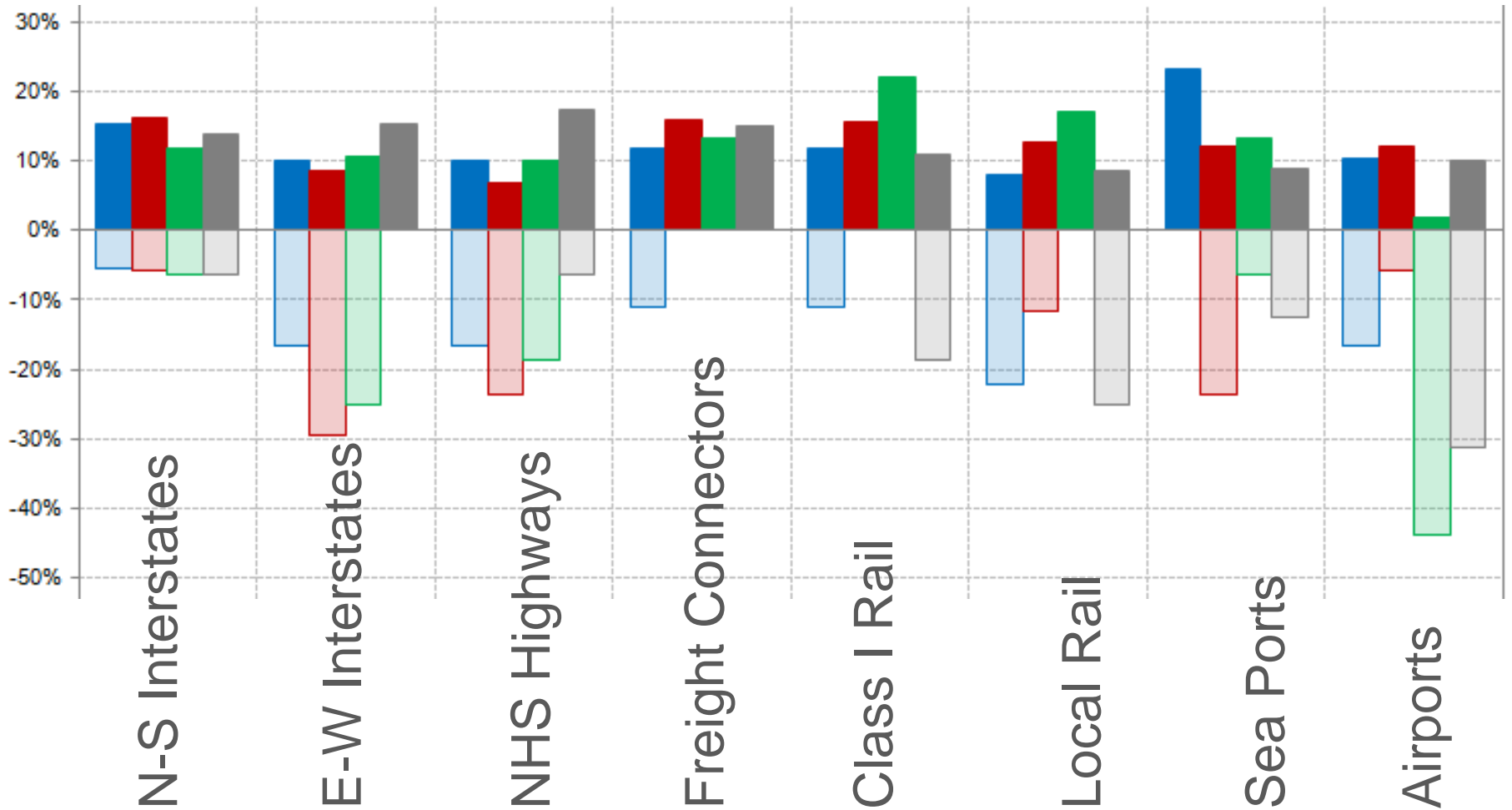
The image is a screenshot of a website titled "CONNECTIONS 2040 CHOICES & VOICES". The website has a green and blue color scheme. It features a header with the title and logos for "Connections 2040" and "dvrpc". Below the header, there is a section titled "How Would You Like It?" with a form for user input. To the right, there is a map of the region. At the bottom, there are several small images showing different transportation scenarios. The text below the screenshot reads: "Identify YOUR Vision for the Future of Greater Philadelphia by taking the *Connections 2040 Choices & Voices* challenge."

FUTURE FREIGHT FLOWS





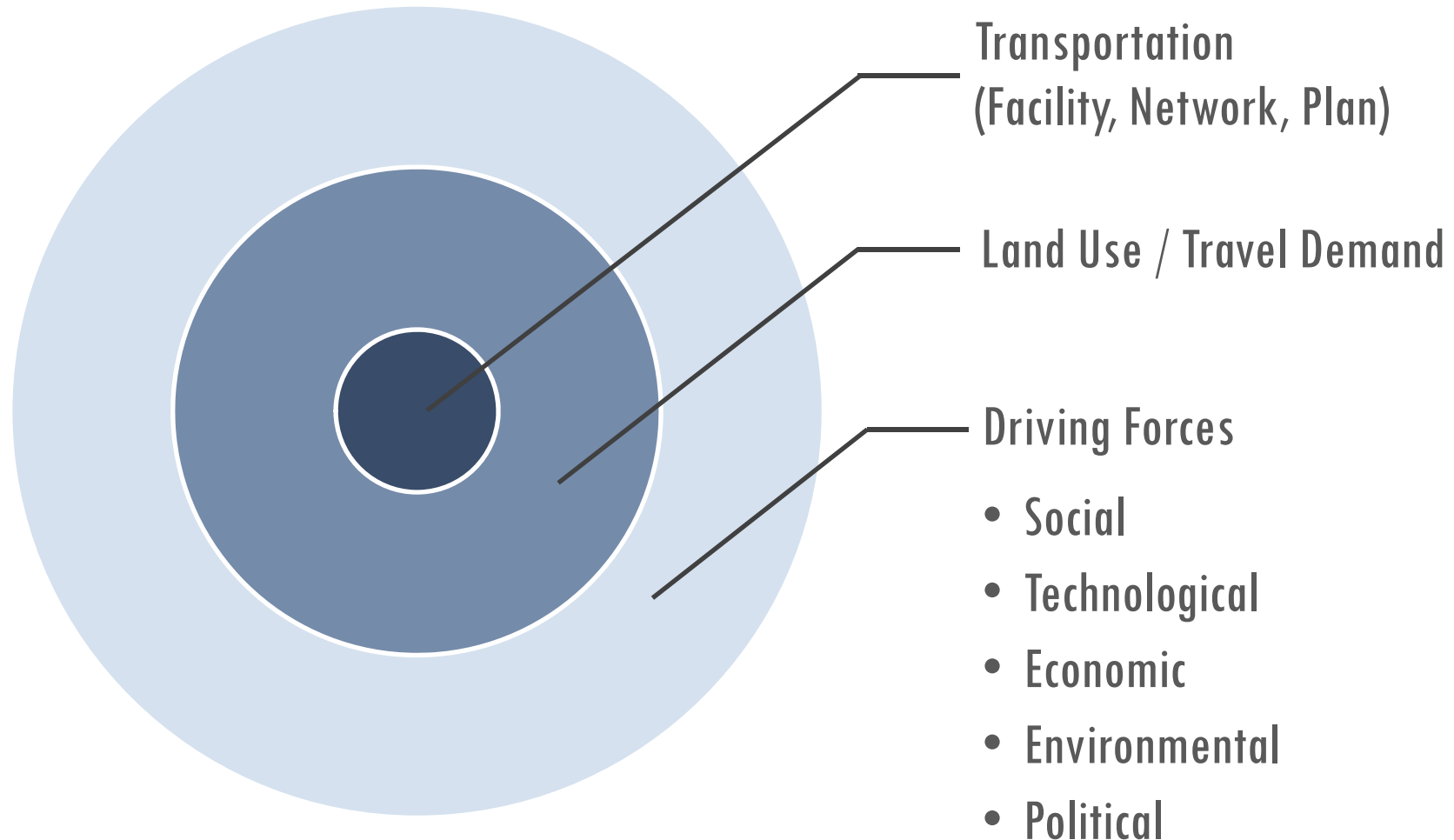
FUTURE FREIGHT FLOWS



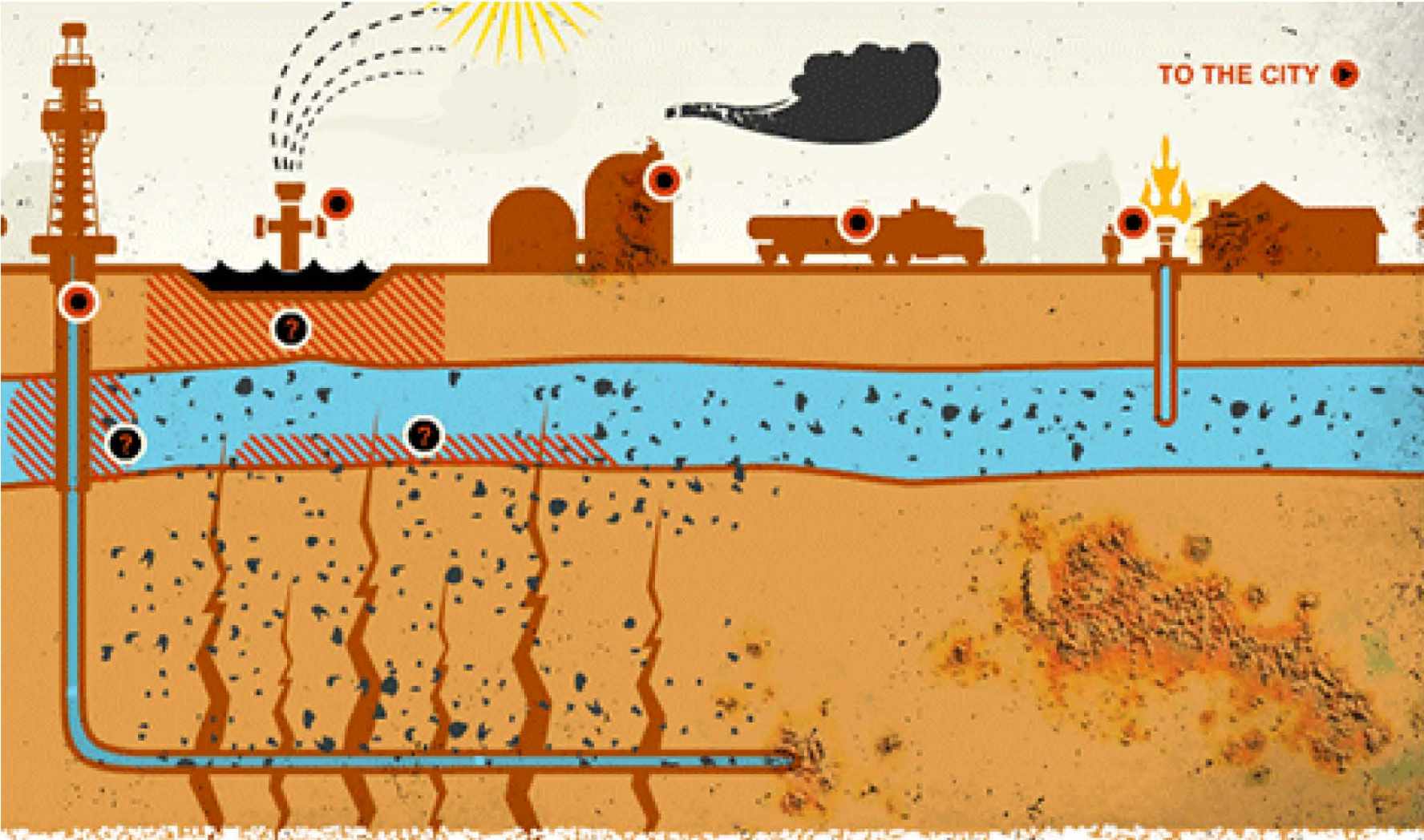
■ Global Marketplace
■ Naftastique

■ One World Order
■ Technology Savior

SCENARIO PLANNING



CHEAP ENERGY



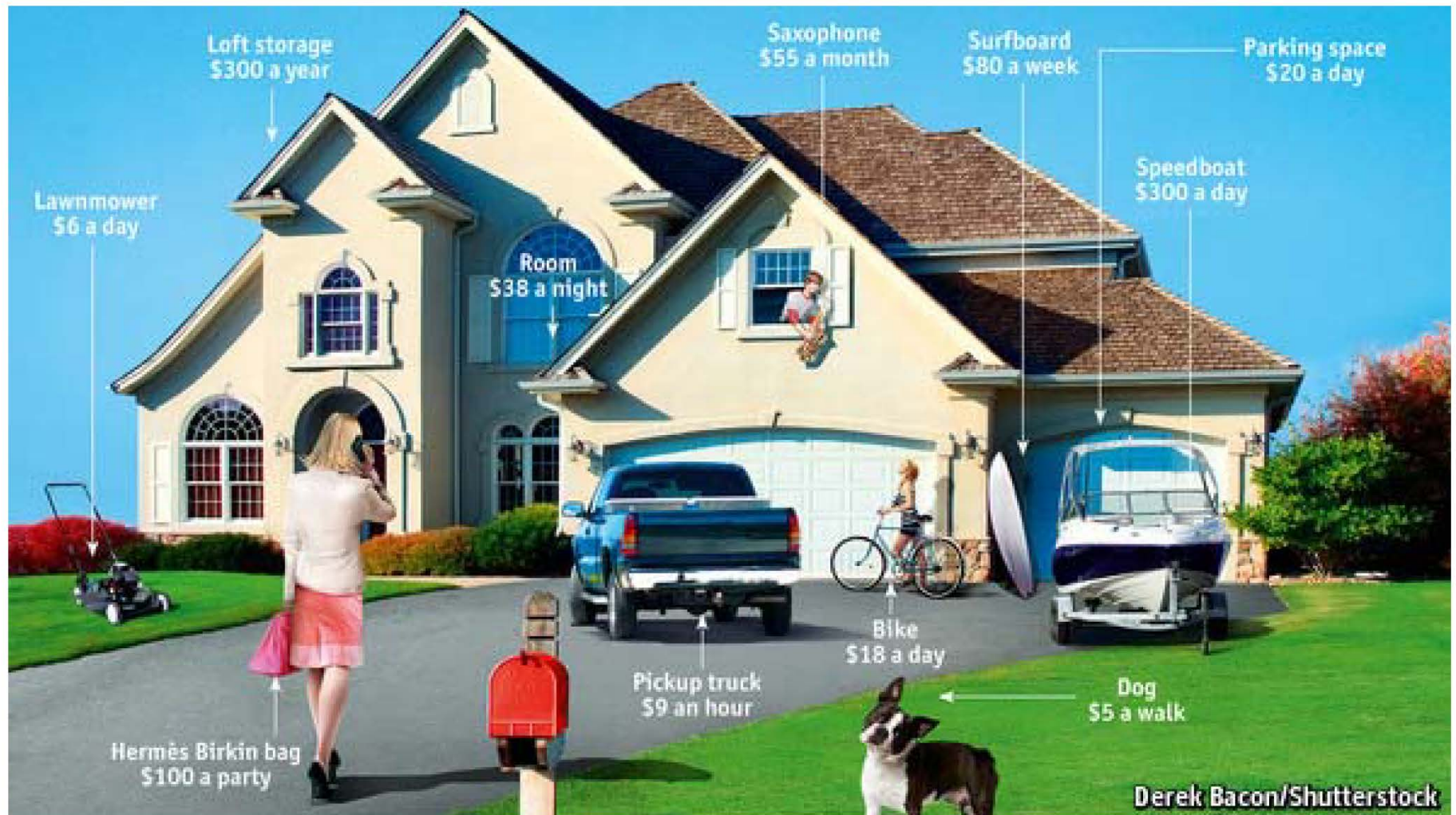
Source: Treehugger.com

THE MILLENNIALS

Source: Time

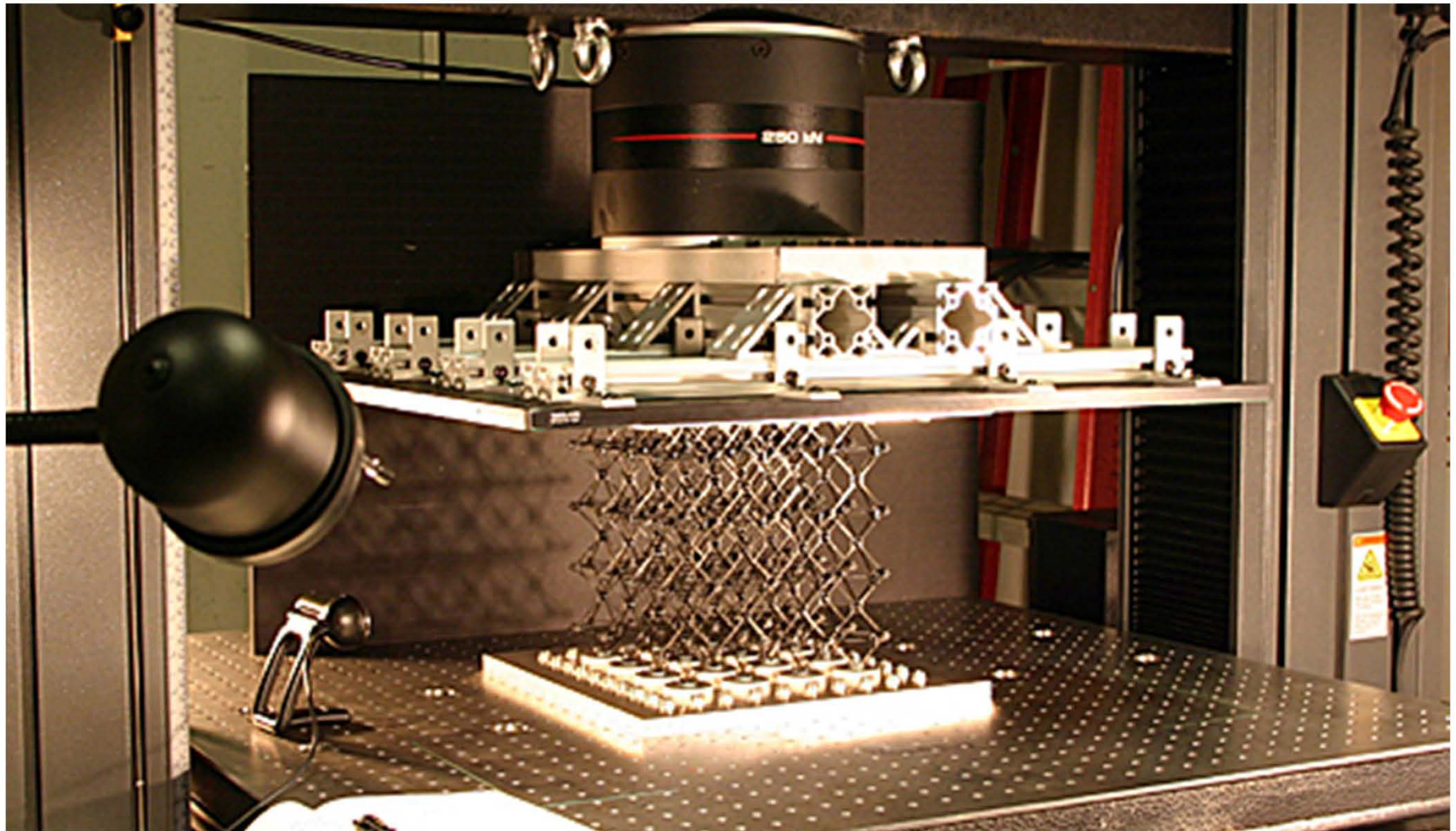


THE SHARED ECONOMY



Source: The Economist

3-D PRINTED INFRASTRUCTURE

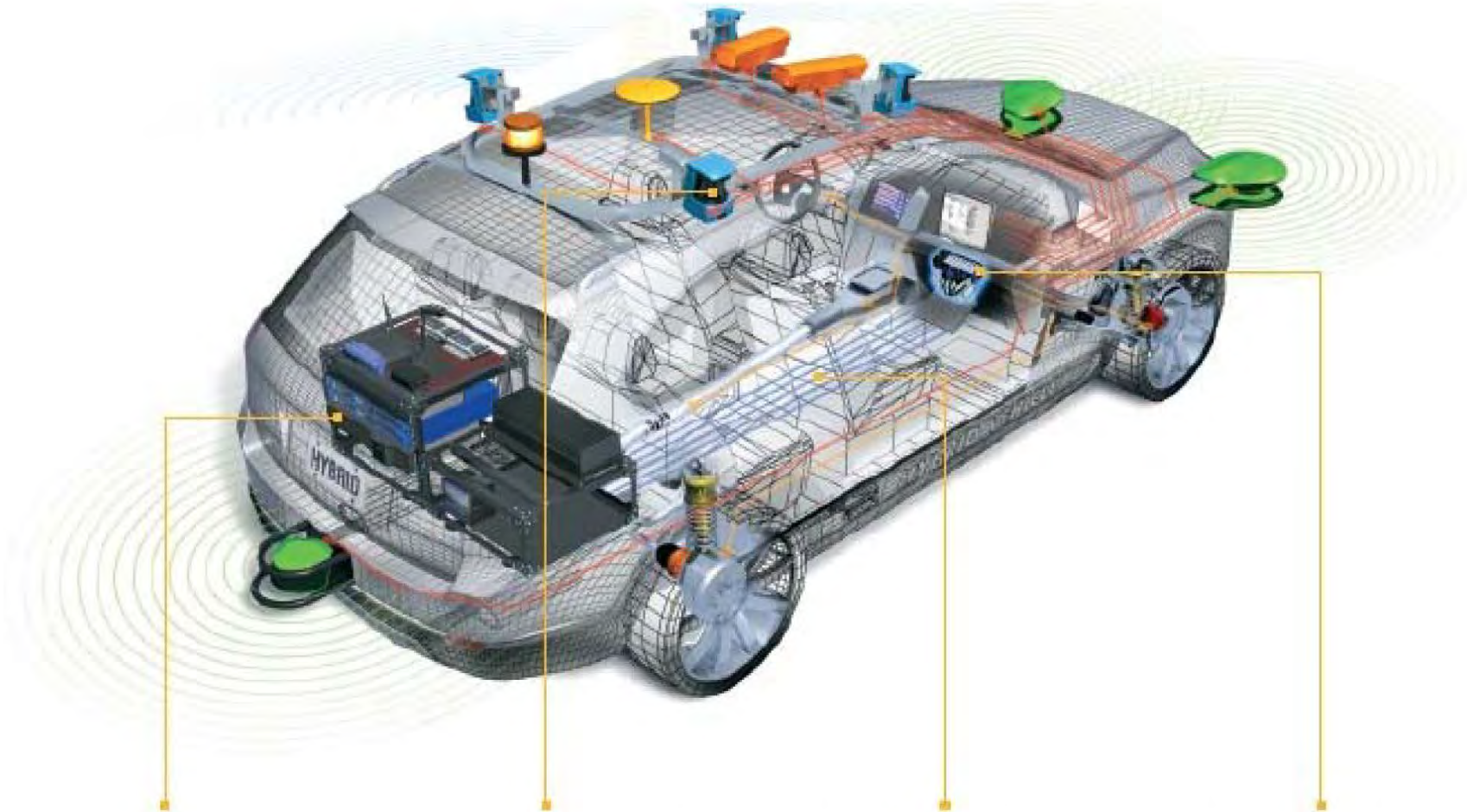


Source: Massachusetts Institute of Technology

CONFRONTING CLIMATE CHANGE



AUTONOMOUS VEHICLES



Multicore, Heterogeneous Computing

Source: National Instruments

Sensor Data Acquisition and Processing

JAUS Interoperable Communications

Drive-by-Wire System



REGIONAL GAMECHANGERS



Source: Amtrak



Source: A Vision for the Schuylkill Rail Yards. University of Pennsylvania. City Planning 703 Studio. Spring 2011.

SCENARIO WORKING GROUP

- Collaborative
- Blend Perspectives:
 - Transportation, Land Use, Economic, Environmental, and Health
- Challenge conventional wisdom and convene outside experts
- Brainstorm Global Drivers of Change and Regional Gamechangers
- Analyze 4-5 Differentiated Scenarios
- Identify Action Steps
- **Public Outreach**
- Short, narrative report & incorporate into Choices & Voices

What are some other drivers of change/regional gamechangers?



Source: A Vision for the Schuylkill Rail Yards. University of Pennsylvania. City Planning 703 Studio. Spring 2011.

Does the working group's program make sense?



Source: A Vision for the Schuylkill Rail Yards. University of Pennsylvania. City Planning 703 Studio. Spring 2011.

How can we better involve the public in this process?



Source: A Vision for the Schuylkill Rail Yards. University of Pennsylvania. City Planning 703 Studio. Spring 2011.



CONNECTIONS **2040**

PLAN FOR GREATER PHILADELPHIA

fostering sustainability, equity and innovation

bfusco@dvrpc.org

www.dvrpc.org/connections2040

www.dvrpc.org/choicesandvoices

THANK YOU!!

