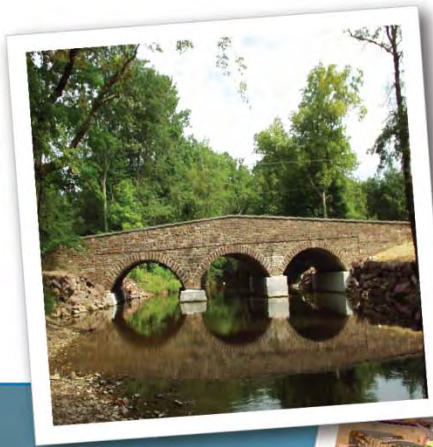




---

★ **TIP** TRANSPORTATION  
IMPROVEMENT PROGRAM

---



*New Jersey (FY2012-2015)*  
*Pennsylvania (FY2013-2016)*



# Transportation Improvement Program

**Developing and maintaining the  
Transportation Improvement Program  
is what makes the region eligible  
to receive and to spend  
federal transportation dollars**

**PA and NJ TIP = \$5.5 Billion over 4 years**



## What is the TIP?

- The near-term expression of the Long Range Plan
- Agreed upon list of priority projects that are regionally significant and all other projects seeking federal funds
- Not a guarantee
- Not a grant of money, but based on reimbursements
- Financially constrained
- **REQUIRED** by federal legislation

# DVRPC FY 2012-2015 TIP for NJ

## New Jersey Highway Program

Final Version

Gloucester

DB# D0503 Egg Harbor Road, Hurffville-Cross Keys Road to Hurffville-Grenloch Road, CR 630

AQCODE: 2020M

This project will widen Egg Harbor Road for 2.5 miles between CR 635 & CR 654 from 2 lanes to four lanes, and may include an auxiliary lane for left turn movements at selected intersections. Significant shoulder widths will also be included. Washington Township has experienced significant population growth and Egg Harbor Road provides the direct link from the Rt. 55 interchange on Rt. 47 near Five Points to the heart of Washington Township at the junction of Hurffville-Cross Keys Road. The roadway narrows down from a four-lane roadway to two with auxiliary lanes in this stretch of roadway.

This project is multi-year funded under the provisions of Section 13 of P.L. 1995, c.108. Total construction funding needed is expected to be \$13,000,000.

This project may be suitable for ITS treatments.

Major SOV Capacity Subcorr(s): 11A

Municipalities: Washington Township

DVRPC Planning Area: Developed Community

Project Manager: Bergeman, Chris

CIS Program Category: Local System Support

DOT Program Category: Local Aid

Degrees of Disadvantage: 0

Mileposts: 0.0 - 2.56

Improvement Type: Roadway New Capacity

Phase	Fund	TIP Program Years (\$ millions)				Later Fiscal Years (\$ millions)					
		2012	2013	2014	2015	2016	2017	2018	2019	2020	2021
CON	STP-STU	6.850									
CON	STP-STU		7.000								
Fiscal Year Total		6.850	7.000								
		<u>Total FY 2012-2015</u>			13.850	<u>Total Later FY 2016-2021</u>					

***Multi Year, multi modal program***

***Best Estimate of project schedule and costs***

***Four year program, updated every other year***



## How Is TIP Developed?

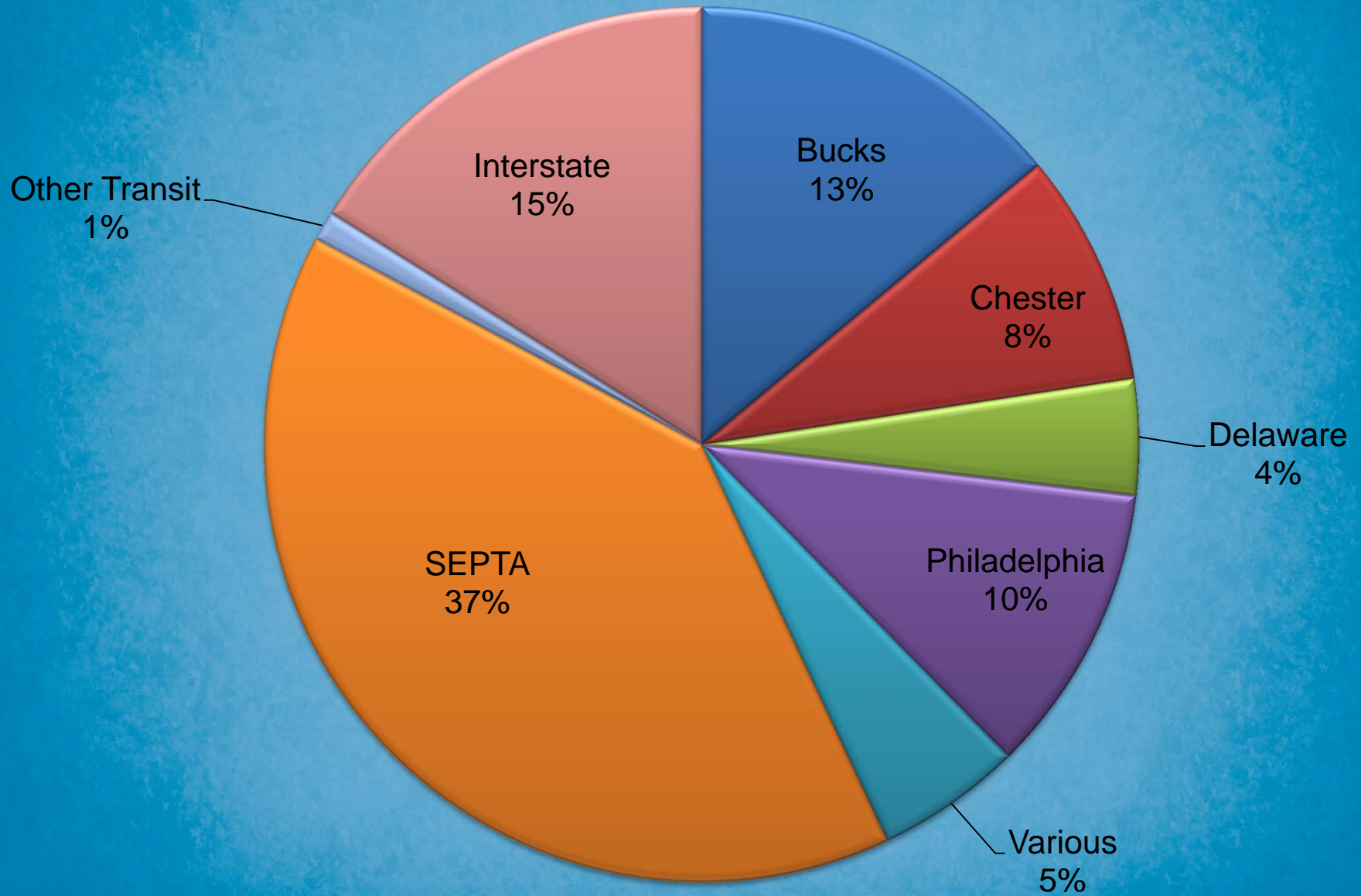
- Joint effort: DVRPC, Counties/Cities, DOT's, Transit Operators, Citizen Representative
- DOT's and transit operators update costs and schedules of current projects
- Agreement on financial resources
- Determine potential for new projects
- Subcommittee negotiates towards a constrained Draft Program
- Public Comment period May or June
- Presented for adoption to DVRPC Board in June or July
- Submitted to DOT for transmittal to FHWA/FTA



## FY2013 TIP for Pennsylvania - \$3.7 B

- **385 Highway projects totaling \$2.3 Billion**
  - Includes 15 projects funded by \$536 million provided by the Statewide Interstate Management Program (IMP) for I-95 Reconstruction
- **42 Transit projects totaling \$1.4 Billion**

## By PA County and Operator



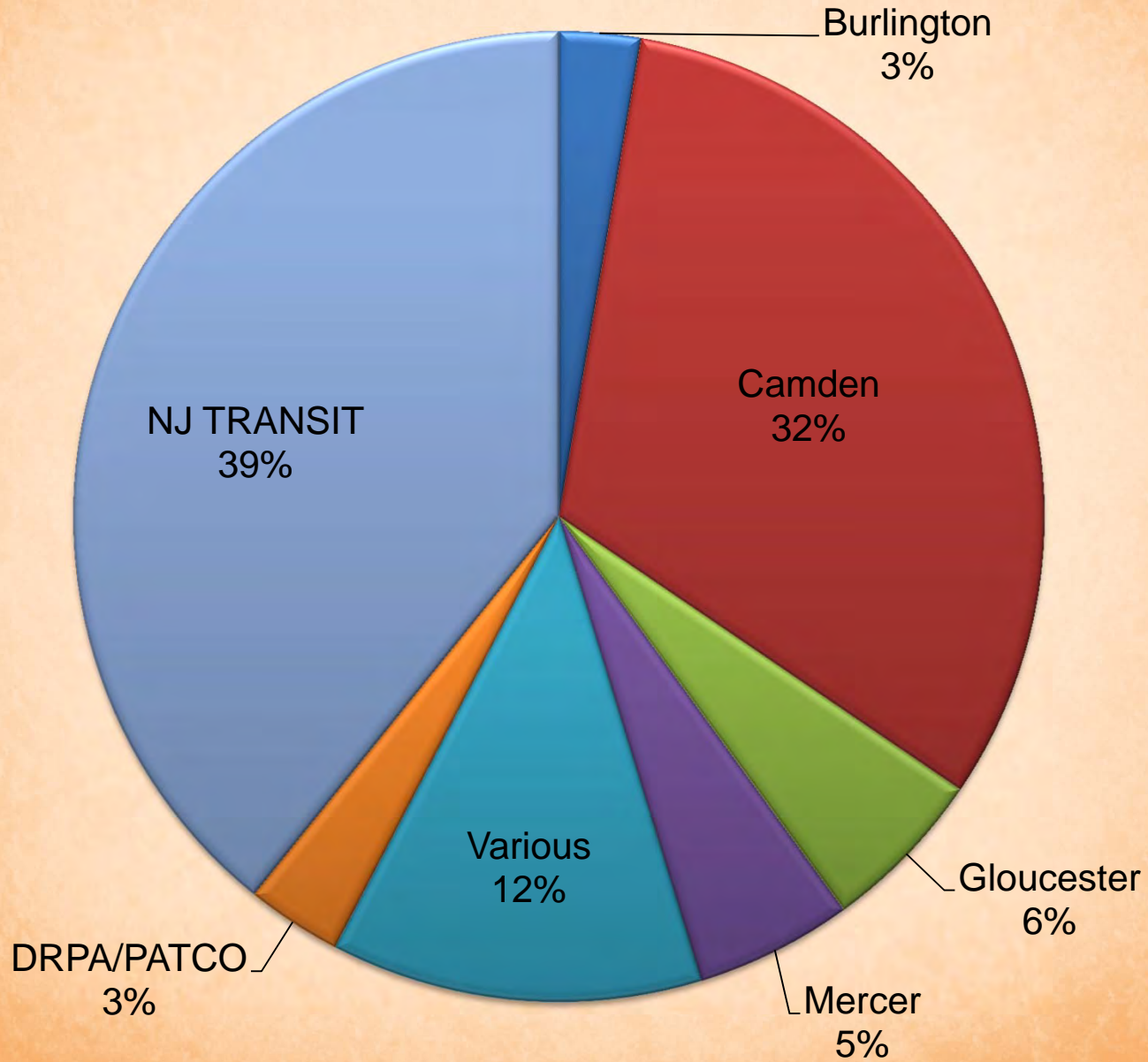


## **FY2012 TIP for New Jersey - \$1.8 B**

- 91 Highway projects totaling \$ 1 Billion**
- 14 DRPA/PATCO projects totaling \$60 million**
- 36 NJ TRANSIT projects totaling \$736 million**
- 15 Study & Development Program projects**



# By NJ County and Operator



## Resources

- + Products and Services
- + Long-Range Plan
- + Environment
- + Funding Opportunities
- Transportation Improvement Program (TIP)
  - Overview
  - New Jersey TIP**
  - Pennsylvania TIP
  - TIP Guide
- + Transportation
- + Operations and ITS
- + Land Use
- + Economic Development
- + Community Resources
- + Other Links

## Publications

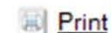
### Managing Access Along PA 611 in Bucks County



The evaluations summarized in this report were performed in support of PennDOT's statewide effort to promote the establi...

### Recent

## FY2012 TIP for NJ



On July 5, 2011, DVRPC closed the public comment period on the Draft FY 2012 TIP for the New Jersey portion of the region. This TIP was developed jointly in cooperation with NJDOT, NJ TRANSIT, DRPA/PATCO and DVRPC's member counties and cities. The 30+ day comment period allowed the public an opportunity to review and comment on the program prior to it being presented to the DVRPC Board for adoption. The DVRPC Board adopted the final TIP with Recommended Changes (see below for a list of Recommended Changes) on July 28, 2011. The DVRPC FY2012 TIP for New Jersey became effective on November 1, 2011.

The public comment period was conducted jointly with NJDOT and NJ TRANSIT and also served as an opportunity to comment on New Jersey's State Transportation Improvement Program (STIP).



## Detailed Information

Documents are in PDF format. Get the free [Adobe Acrobat Reader](#).

### TIP projects can be searched, mapped, and displayed interactively here

- [Summary and Explanatory Information](#)
- [Public Outreach Summary](#)
- [Libraries Displaying the TIP](#)
- Helpful Correspondences: [By Title](#) or [By DB#](#)
- [Recommended Changes to Draft FY2012 TIP](#)

### Summary of Amendments and Modifications

## Program Lists

- [All DVRPC Projects](#) [0.8 MB pdf]
- [Burlington County](#) [0.1 MB pdf]
- [Camden County](#) [0.1 MB pdf]

## Announcements

### Applications are Now Available for The Delaware Valley Regional Planning Commission's Pennsylvania FY2016 New Freedom Fund Round

The Delaware Valley Regional Planning Commission (DVRPC) is now accepting applications from eligible Pennsylvania agencies and organizations...

### Recent

March 8 Strategies for Older Suburbs Roundtable: Engaging Local Businesses to Build a Urban Downtown

March 7: Regional Listening Session on Freight Planning in Lansdale, PA

DVRPC News

[View All](#)

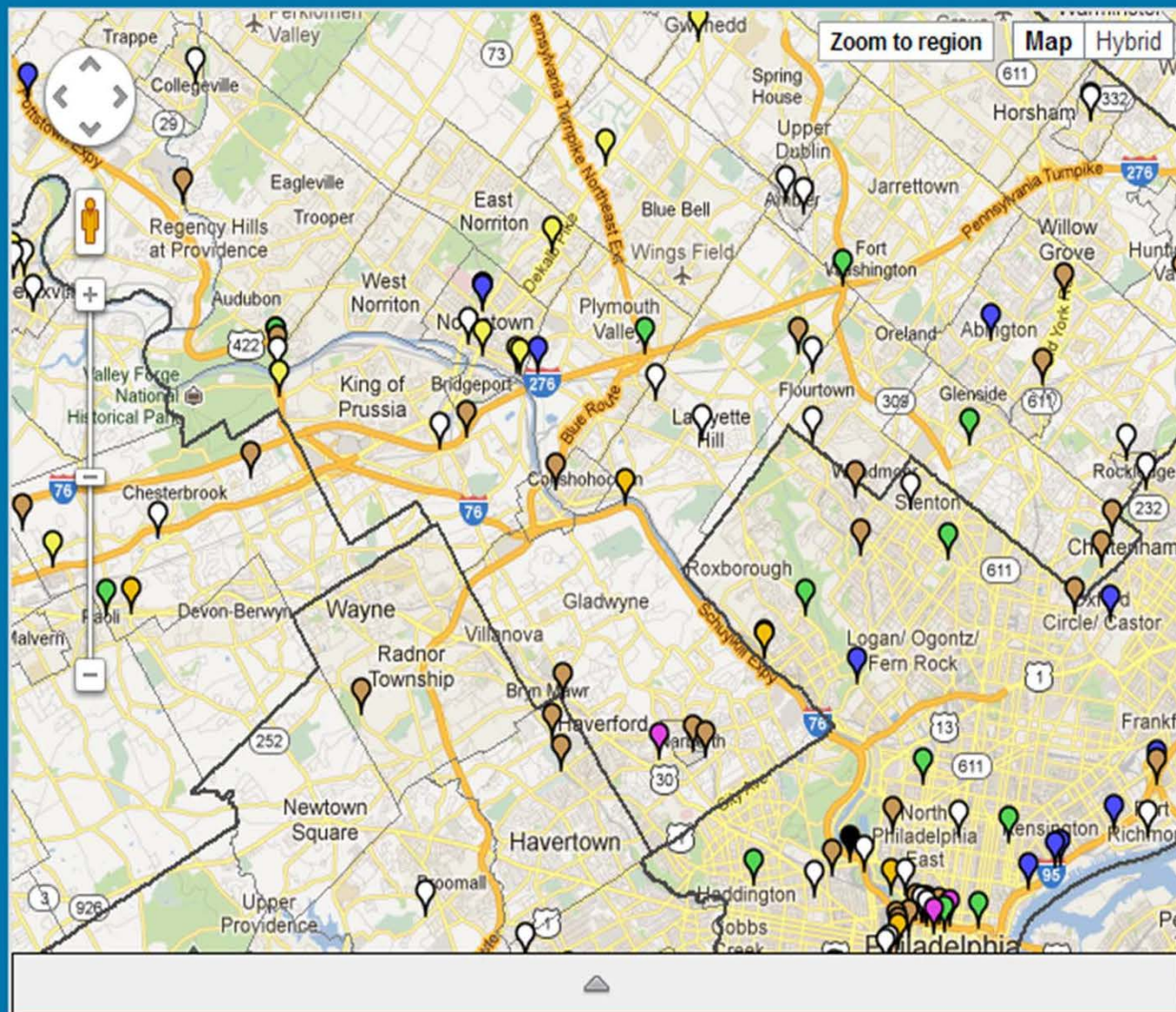
## Calendar

- 3/14 Public Participation Task Force
- 3/18 Transportation Operations Task Force
- 3/19 Urban Waterfront Action Group (UWA)



# Draft FY2013 Transportation Improvement Program (TIP) for PA

[Purpose](#) | [How To Use](#)



## Search

## Project Categories

[Click to show/hide all](#)

- [Highway Reconstruction-Restoration Projects](#)
- [Transit Restoration-Rehabilitation Projects](#)
- [Highway Safety, Operational or Drainage Improvements](#)
- [Transit Safety and Operational Improvements](#)
- [Highway New Capacity Projects](#)
- [Transit New Capacity Projects](#)
- [Bridge Replacement or Rehabilitation Projects](#)
- [Pedestrian or Bicycle Initiatives](#)
- [Other Air Quality Initiatives](#)
- [Studies and Other Miscellaneous Projects](#)

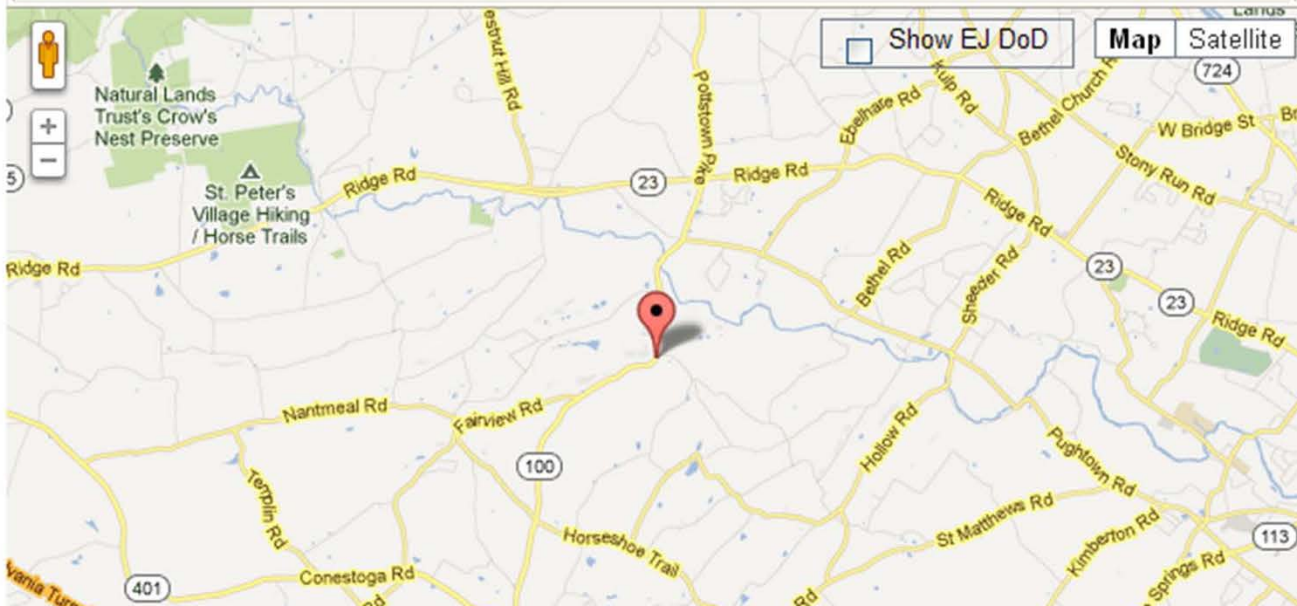
## Zoom

## Comments

## DVRPC TIP Project Detail

<b>Chester</b>	
MPMS 80042	PA 100, Corridor Safety Improvements
AQ Code: S6	
Limits: Hanover Street to Font Road	The DVRPC PA 100 Corridor Safety Study identified necessary safety improvements along the Route 100 Corridor in five townships of Chester County help reduce the incidents of speeding and the number of accidents. The police pull out, climbing lane, and Dynamic Message Sign improvements are planned measures to slow motorists down in order to reduce the number of "hit fixed objects" accidents that occur within this corridor due to drivers travelling "too fast for conditions". The SR 0023 and SR 0100 intersection improvements will be designed to reduce the number of angle and rear-end crashes that occur at this location, especially due to factors such as PM peak hour traffic congestion and intersection geometry. Locations: PA 100 N, Coventry, E Nantmeal, W Vincent & U Uwchlan Twps Corridor Safety Improvements. 9.36 (Miles). Companion with MPMS# 80044
Sponsor:	MCD: South Coventry Township; Upper Uwchlan Township; West Vincent Township; East Nantmeal Township; North Coventry Township

Phase	Fund	TIP Program Years (\$000)				Later FYs		
		2013	2014	2015	2016	2017-2020	2021	
CON	HSIP	0	0	3658	0	0		
FD	HSIP	477	0	0	0	0		
ROW	HSIP	0	151	0	0	0		
<b>Fiscal Year Total</b>		477	151	3658	0	0		
<b>Total FY 2013-2016 Cost 4286</b>								<b>Later</b>





# Draft FY2013 Transportation Improvement Program (TIP) for PA

[Purpose](#) | [How To Use](#)

**MPMS 76870 – Willow Grove Avenue Bridge Over SEPTA R8 Rail Line (CB)**

[Description](#) [Funding](#) [Comments](#)

Limits: Over SEPTA R8 Rail Line

The scope of work includes the removal of the existing structure and piers, the construction of new stone faced reinforced concrete abutments, reconstruction of the roadway approach and the construction of a new single span stringer bridge, concrete parapets and an electrification barrier over the SEPTA track. The bridge is currently closed to vehicular traffic.

AQ Code: S19  
County: Philadelphia  
MCD: Germantown-Chestnut Hill

► [Search](#)

► [Project Categories](#)

► [Zoom](#)

▼ [Comments](#)

To add a comment for a **specific TIP project**, please select that project on the map and then click on the Submit Comment icon to submit a comment.

Use the links below to interact with general comments for Draft DVRPC FY2013 TIP for Pennsylvania.

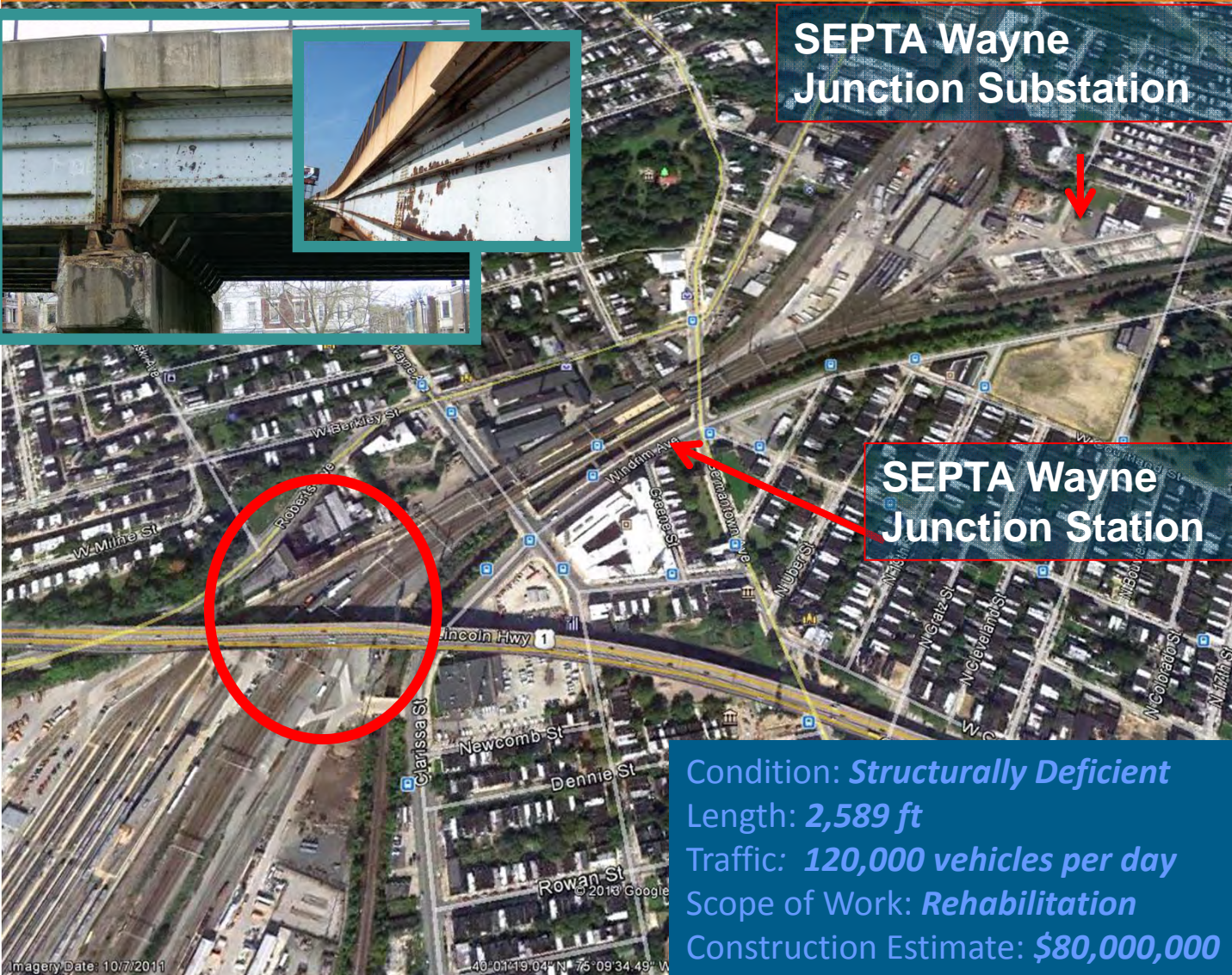
[Submit a general comment for Draft DVRPC FY2013 TIP for PA](#)

# TIP ACTIONS

SEPTA Wayne  
Junction Substation

SEPTA Wayne  
Junction Station

Condition: *Structurally Deficient*  
Length: *2,589 ft*  
Traffic: *120,000 vehicles per day*  
Scope of Work: *Rehabilitation*  
Construction Estimate: *\$80,000,000*





## Add New Projects (2) - PA

### a. Transit and Regional Rail Station Program, SEPTA (PA13-22)

- Amend the FY2013 PA TIP by adding the 23<sup>rd</sup> and Venango Streets and 35<sup>th</sup> and Allegheny Streets Bus Loop Rehabilitation projects to the Transit and Regional Rail Station Program with **\$2,150,000 federal discretionary Livability Initiative (Section 5309-C) funds** (\$1,720,000 Section 5309-C/ \$416,132 Section 1514 Bond/ \$13,868 Local) in FY13.
- \$2.15 million available through value engineering and low bid savings from the 33<sup>rd</sup> and Dauphin Streets Bus Facility Rehabilitation project.
- The FTA has approved SEPTA's request
- All 3 North Philadelphia locations share common need
- Loop Program on "Illustrative Unfunded" list

# FTA LIVABILITY INITIATIVE

## ONGOING AND PLANNED BUS FACILITY PROJECTS

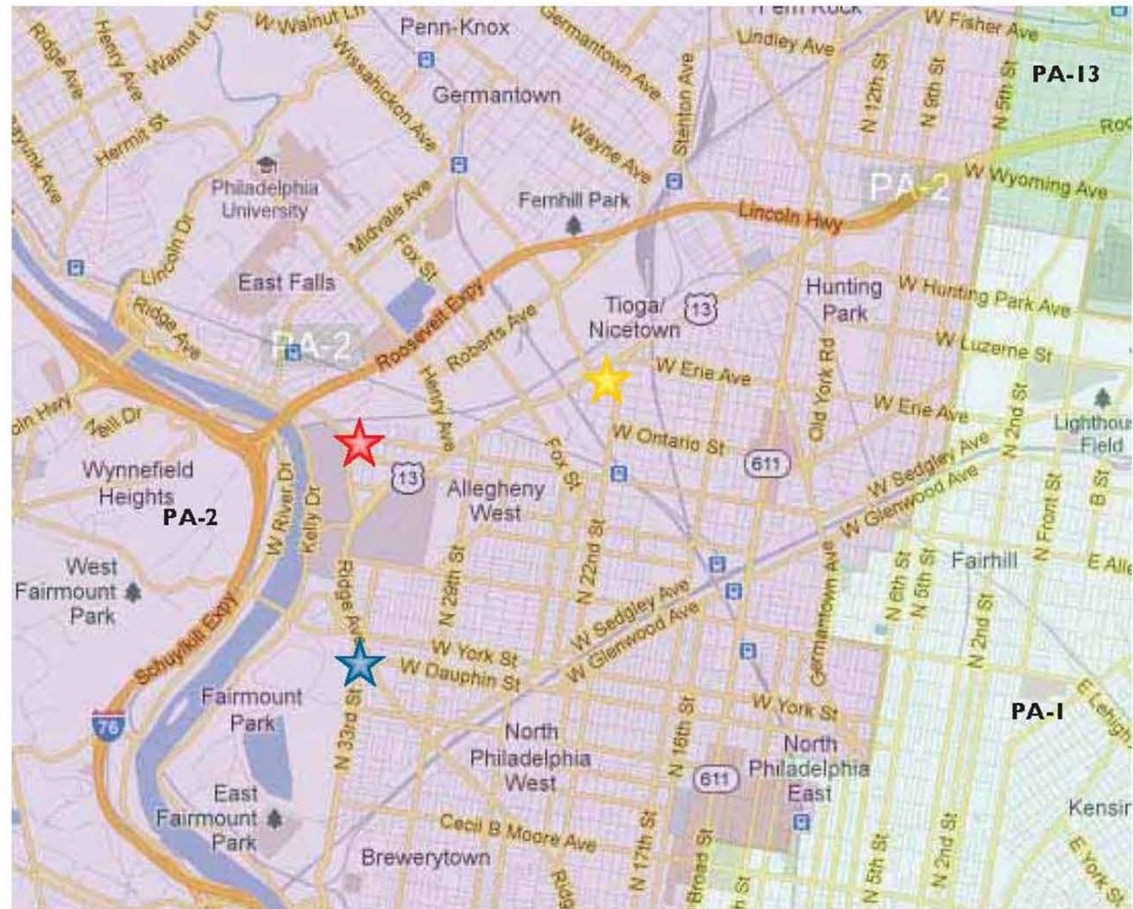
**33rd and Dauphin Streets Bus Facility  
(Under Construction)**



**23rd and Venango Streets Bus Facility  
(Planned)**



**35th and Allegheny Streets Bus Facility  
(Planned)**



District boundaries will be effective beginning with the 113th Congress.

Improvements include passenger loading platforms, shelters, lighting, signage, and bike racks



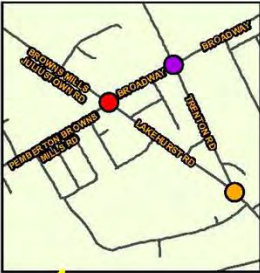
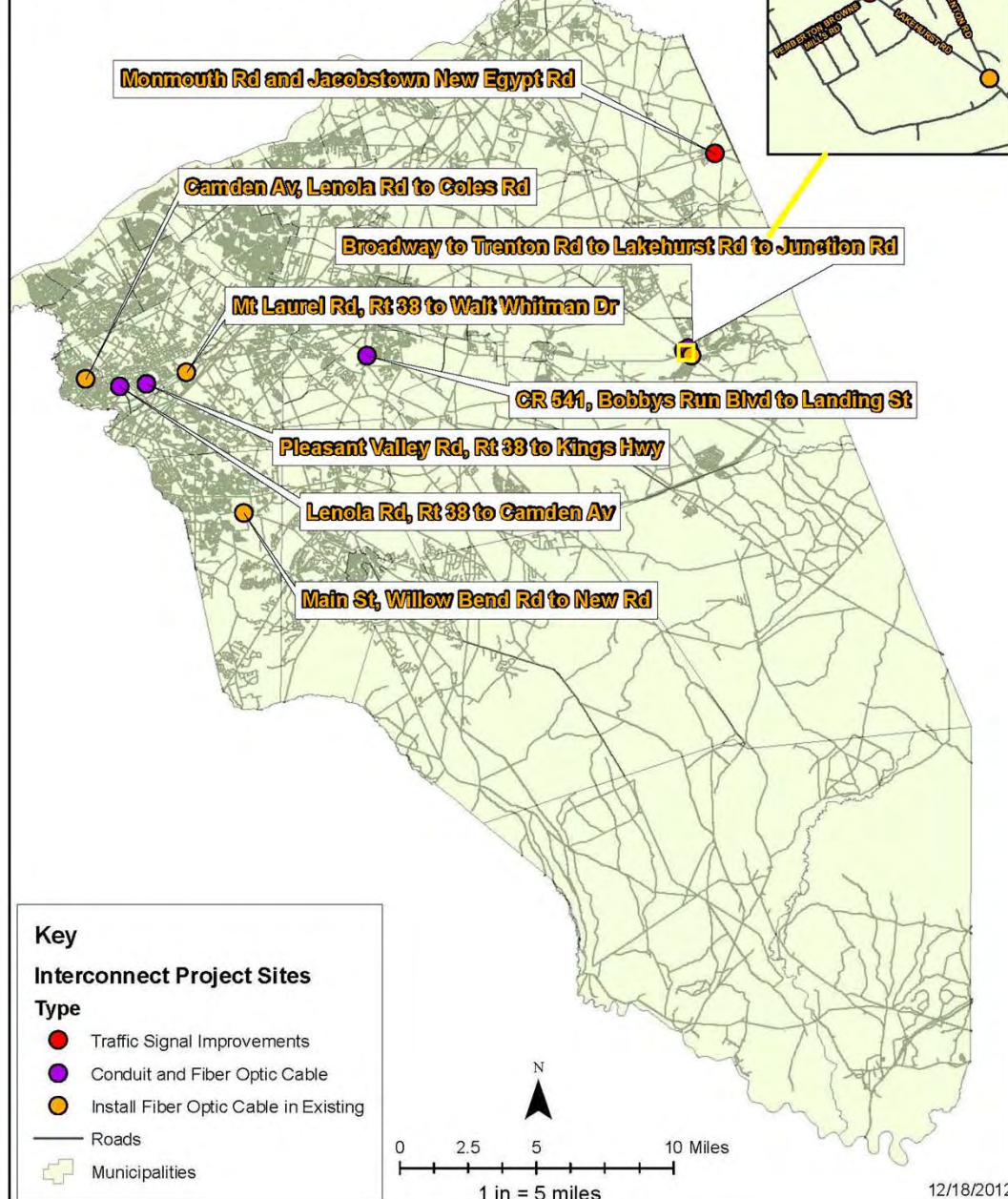


## Add a New Local Project - NJ

### d. Burlington County Roadway Traffic Signal Upgrade and System Interconnect, Burlington County (NJ12-56)

- *Amend the FY2012 TIP for New Jersey by adding a new \$1,030,000 STP-STU project for FY13 construction.*
- *Funds are available for construction projects that can be quickly obligated. Projects must have funds authorized this federal fiscal year—they will not be carried over into FY14.*
- *At the intersections of Monmouth & Jacobstown New Egypt Roads and Pemberton Browns Mills & Juliustown Roads, two traffic signals will be upgraded to current design standards and an uninterruptible power supply (UPS) will be provided in the event of power failure. The project will also link 17 traffic signals onto the County's existing traffic signal network by constructing an underground conduit and fiber optic cable at four locations and installing only a fiber optic cable at four other locations with an existing empty conduit.*

# Burlington County Traffic Signal Upgrade System Interconnect Project





# Public Participation

## Current TIP

*Year-Round*

### *Both via:*

- [DVRPC Website](#)
- U.S. Mail
- E-mail
- Fax
- Attend and comment at meeting

## DRAFT TIP

- Open House meetings
- 30 Day Public Comment Period
- Draft TIP displays at various libraries throughout region

Home > DVRPC Committees > The DVRPC Board > Agenda

### Resources

- Products and Services
- Long-Range Plan
- Environment
- Funding Opportunities
- Transportation Improvement Program (TIP)
- Transportation
- Operations and ITS
- Land Use
- Economic Development
- Community Resources
- Other Links

### Publications

#### Managing Access Along PA 611 in Bucks County



The evaluations summarized in this report were performed in support of PennDOT's statewide effort to promote the establi...

#### Recent



Environmental Justice at DVRPC: Fiscal Year 2012



Haverford Road Commerical Corridor Analysis



I-95/I-476 Interchange Feasibility Study: Phase 2 Executive Summary

[Search or View All](#)

## The DVRPC Board

[Print](#)

Thursday, February 28, 2013  
10:00am

Commission Office  
The ACP Building - 8th Floor  
190 N. Independence Mall West  
Philadelphia, PA 19106

For directions Call (215) 592-1800  
Please Use Sixth Street Entrance

#### WINTER WEATHER ALERT:

If snow or icing occurs on this day, call DVRPC at (215) 592-1800 to confirm if the meeting will be held.

### AGENDA

#### CALL TO ORDER - CHAIR'S COMMENTS

#### PUBLIC COMMENTS ON AGENDA and NON-AGENDA ITEMS

*NOTE: Visitors may view details and leave comments on any Action Item below by clicking on the hyperlinked title.*

#### ACTION ITEMS

##### 1. Minutes of Meeting of January 24, 2013

##### 2. Transportation Improvement Program (TIP) Actions

- a. PA13-21: [Additional Design Start Funding Provided to the DVRPC Region. \(Various MPMS#s\) Various Pennsylvania Counties](#)
- b. NJ12-51: [CR 553 Buck Road, Section 2, Resurfacing \(DB# D1301\), Gloucester County](#)
- c. NJ12-52: [CR 678, Harrison Street \(Mantua or Berkelev Road\), Resurfacing \(DB# D1302\), Gloucester County](#)
- d. NJ12-53: [Pearl Street Bulkhead Replacement \(DB# D1007A\), Camden County](#)

**Select TIP Action Item**

##### 3. Fiscal Year 2013 Planning Work Program Amendments

[Online Business and Technology Training Program \(OBT\)](#)

##### 4. Review of Recommended FY14 Pennsylvania New Freedom Project Slate

Staff will brief the Board on the Selection Committee's recommended list of five Pennsylvania New Freedom projects, which were originally approved last fiscal year for two years of funding—the second of these two years must now be reviewed and re-approved.

##### 5. Adjustments to 2040 Demographic Forecasts for Upper Merion Township

A better estimate of future growth in Upper Merion Township is available due to updated information on development. Staff will present the adjustments and ask for Board approval.

### Announcements

**Applications are Now Available for The Delaware Valley Regional Planning Commission's Pennsylvania FY2015 New Freedom Funding Round**

The Delaware Valley Regional Planning Commission (DVRPC) is now accepting applications from eligible Pennsylvania agencies and organiz...

#### Recent

March 8 Strategies for Older Suburbs Roundtable: Engaging Local Businesses to Build a Unified Downtown

March 7: Regional Listening Session on Freight Planning in Lansdale, PA

DVRPC News

[View All](#)

### Calendar

- 3/14 Public Participation Task Force
- 3/18 Transportation Operations Task Force
- 3/19 Urban Waterfront Action Group (UWAG)
- 3/21 Regional Aviation Committee
- 3/25 Philadelphia Diesel Difference Working Group
- 3/28 Board and Executive Committees

[View All](#)

**ACTION ITEM**

Date Prepared: February 15, 2013

COMMISSIONER'S SUMMARY SHEET  
DELAWARE VALLEY REGIONAL PLANNING COMMISSION  
BOARD MEETING FEBRUARY 28, 2013

Agenda Item:2a. Transportation Improvement Program (TIP) ActionPA13-21: Additional Design Start Funding Provided to the DVRPC Region, (Various MPMs), Various Pennsylvania Counties

PennDOT has requested that DVRPC amend the FY2013-2016 TIP for Pennsylvania by adding \$10,100,000 (\$2,800,000 State 185/\$2,500,000 State 581/\$4,800,000 State 183) design funds in FY13 to five TIP projects. This action advances three with construction programmed in Later Fiscal Years, one project that was on the Illustrative Unfunded List, and another new bridge project that is advancing. This action reflects an effort to make sure projects are in the design pipeline should there be a new revenue source, and a statewide initiative has made FY13 state funds available to PennDOT Districts throughout the state. These state funds are additional funds to the DVRPC region.

Funds have been made available to advance final design for the following projects in the DVRPC region:

- \$2,600,000 for Vine Street Expressway Bridges Over I-676 Expressway (PAB) - Part 3 (MPMS# 80054), City of Philadelphia. This project involves replacing two superstructures over I-676 in the City of Philadelphia and is the first phase of the three Vine Street Bridge contracts to advance. This section is located at the Free Library Pedestrian Bridge (Shakespeare Park) north of Logan Circle and the intersection realignment of 20th and Winter Street. \$2,403,000 is already programmed for final design in the current TIP. This TIP Action is to increase the final design phase by \$2,600,000 for more engineering due to the bridges needing to be replaced, instead of rehabilitated. The improvements include superstructure replacement with steel and concrete decks, pier removal and abutment modifications to accommodate the new superstructure and minor approach roadway work. An existing opening between 20th Street and the Free Library Pedestrian Bridge will be capped over with new superstructure as a part of this project. Approach roadway work will include reconstructing the Ben Franklin Parkway from 20th Street to 21st Street. There are existing sidewalks along both sides of 20th Street, Ben Franklin Parkway and Winter Street that will be replaced in kind. Existing bike lanes along Ben Franklin Parkway and 20th Street will also be replaced in kind. Enhancements along the Franklin Institute at the intersection of Winter Street and the Ben Franklin Parkway, and enhancements at the Free Library Pedestrian Bridge will have funding contributions from MPMS# 79473 and 85059 respectively. The construction cost of this project is estimated at \$78,500,000.
- \$2,200,000 for Vine Street Expressway Bridges Over I-676 Expressway (PAC) - Part 2 (MPMS# 88768), City of Philadelphia. This project involves replacement of two superstructures over I-676 in the City of Philadelphia and is the second of the three Vine Street Bridge contracts to advance. There is no final design funding on the current TIP. This section is located at the 19th Street Bridge over I-676, north of Logan Circle; the Family Court Pedestrian Bridge over I-676, north of Logan Circle and the 18th Street Bridge over I-676, north of Logan Circle. Part two of a three part breakout of MPMS# 80054. All existing structures to be reconstructed are non-composite prestressed concrete adjacent box beams with asphalt wearing surfaces supported by concrete abutments and a center concrete pier. The improvements include replacement with steel and concrete decks, pier removal and abutment modifications to accommodate the new superstructure and minor approach roadway work. Both the 18th Street and 19th Street Bridges have existing sidewalks on each side that will be replaced in kind. The construction cost of this project is estimated at \$112,899,000.
- \$2,500,000 for Roosevelt Boulevard over Wayne Junction (WAV) Viaduct (MPMS# 83736), City of Philadelphia. This project involves rehabilitating or replacing the bridge carrying Roosevelt Boulevard SR 0001 over Roberts Road, Wayne Avenue Station, Clarissa Street, Germantown Avenue, and N. Gratz Street. The existing bridge is 2,589 feet in length and carries two 12-foot northbound lanes, three 12-foot southbound lanes, shoulders, and a center median barrier. The rehabilitation or replacement will include deck replacement, superstructure and substructure repairs, bridge painting, bearing maintenance, evaluation of pin & hangers, fatigue analysis, and seismic analysis. The project will be constructed under traffic. This project has been on the Illustrative Unfunded List. The construction cost of this project is estimated at \$80,000,000.
- \$300,000 for I-95 Overhead Bridges (MPMS# 88407), Delaware County. This new project entails rehabilitation and painting of eight (8) bridges spanning I-95 in the City of Chester. The estimated construction cost of this project is \$300,000,000. The bridges are the Crosby Street Pedestrian Bridge, Edgemont Avenue, Madison Street, Upland Street, Potter Street, Walnut Street Pedestrian Bridge, Chestnut Street and Melrose Avenue. The Potter Street and Melrose Avenue bridges will have their decks replaced. The Chestnut Street Bridge will have a bituminous overlay and the rocker bearings reset. The Upland Street Bridge deck will have an LMC overlay. All bridges will have miscellaneous concrete repairs, have the protective fence repaired or replaced, and will be painted.
- \$2,500,000 for US 202, Dekalb Pike, Section 610 Johnson Highway to Morris Road (Design Only) (MPMS# 50364), Montgomery County. This Section 600 of US 202 project is currently in final design. This MPMS# contains design phase only. Improvements include widening US 202 from two to four or five lanes and intersection improvements at major intersections. The limits of Section 600 are from Johnson Highway to PA 309. See MPMS #s 83491, 83488, and 83490 for construction sections. Construction of these projects is estimated at \$200,000,000.

Financial Constraint:

Financial constraint will be maintained as these funds are additional to the region.

Conformity Finding:

The TIP's current conformity finding will not be impacted by these actions.

Cost and Source of Funds:

\$10,100,000 (\$4,800,000 State 183/\$2,800,000 State 185/\$2,500,000 State 581)

Date Action Required:

February 28, 2013

Recommendations:

Regional Technical Committee — Recommends approval.

Staff — Recommends approval.

Action Proposed:

That the Board approve TIP Action PA13-21, PennDOT's request that DVRPC amend the FY2013-2016 TIP for Pennsylvania by adding \$10,100,000 (\$2,800,000 State 185/\$2,500,000 State 581/\$4,800,000 State 183) design funds in FY13, and update project titles and descriptions as needed, to the following five TIP projects:

- \$2,600,000 State 183 for Vine Street Expressway Bridges Over I-676 Expressway (PAB) - Part 3 (MPMS# 80054), City of Philadelphia.
- \$2,200,000 State 183 for Vine Street Expressway Bridges Over I-676 Expressway (PAC) - Part 2 (MPMS# 88768), City of Philadelphia.
- \$2,500,000 State 185 for Roosevelt Boulevard over Wayne Junction (WAV) Viaduct (MPMS# 83736), City of Philadelphia.
- \$300,000 State 185 for I-95 Overhead Bridges (MPMS# 88407), Delaware County.
- \$2,500,000 State 581 for US 202, Dekalb Pike, Section 610 Johnson Highway to Morris Road (Design Only) (MPMS# 50364), Montgomery County.

[Download information packet for February 2013](#) [ 4 MB pdf ]

Comments for this action item are currently not being accepted.



## Issues

- Revenue and Demands
- Deteriorated Infrastructure
- PA Governor Corbett's Plan
- New Federal Authorization is MAP 21--  
more performance based, some changes,  
short-lived bill









CLEARANCE  
↓ 10m 2m ↓

STOP



NO  
MOTOR  
VEHICLES

NO MOTOR  
VEHICLES











06/05/2008 12:01 AM



BIKE ROUTE

NO  
MOTOR  
VEHICLES

GRUNTA & CO





08/03/2010 16:52







SEPTA

Olney

R8

STAY BEHIND THE GAP





355

PLAINSBORO

78

5535

HealthLine

HealthLine  
from here to health

NEW JERSEY TRANSIT CORPORATION  
NJ TRANSIT BUS OPERATIONS, INC.

New Jersey  
9XZ848  
OMNIBUS

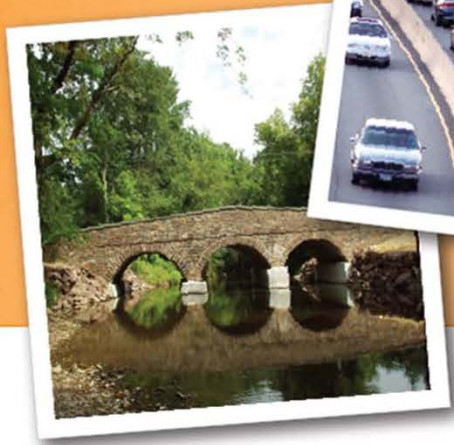


# I-95 and the Girard Avenue Interchange



Reconstructed Delaware Avenue at Penn Treaty Park  
Girard Avenue Interchange





# THANK YOU



DELAWARE VALLEY  
 **dvrpc**  
REGIONAL  
PLANNING COMMISSION



March 14, 2013

# Camden Food Economy Strategy

# Tonight we want to hear from you: what do you think about...

- Camden?
- The Food System?
- The Food Economy?
- Camden's Food Economy?

Compare your answers to findings from our Stakeholder Analysis.



# Overview of DVRPC

- Philadelphia's Metropolitan Planning Organization (MPO), created in 1965
- Interstate, intercounty, and intercity agency
- Prioritize transportation funding
- 2 States, 9 Counties, 352 Municipalities
- Issue areas – Transportation, Land Use, the Economy, and the Environment



# Overview of DVRPC

- Long Range Plan
- Comprehensive Economic Development Strategy (CEDS)
- Transportation Improvement Program
- RideECO
- TCDI



TRANSPORTATION & COMMUNITY  
DEVELOPMENT INITIATIVE



**DVRPC FY 2012-2015 TIP for NJ**  
New Jersey Highway Program Final Version

**Camden**

**DBF 01005 BattleShip New Jersey Access Road (Clinton Ave)**  
Recovery Streetscape

AP0000: 253  
 Description: This project is an economic infrastructure improvement in support of economic development along the waterfront of Clinton Square in Camden. Access Road is a 1.5-mile-long street in the City of Camden. These improvements to the Camden waterfront will include resurfacing, lighting, landscaping, and other aesthetic improvements. Camden's Port Development Authority will manage this project.

The following special Federal appropriations were allocated to the project: FY12 Omnibus Appropriations \$M, \$523,100

AP0000: 253

Municipality: Camden City DVRPC Planning Area: Con City  
 Project Manager: Camden Port Dev. Assn. CDS Program Category: Local System Support  
 DOT Program Category: Degree of Disadvantage: B  
 Improvement Type: Streetscape Rehabilitation

Phase	Fund	TIP Program Years (\$ millions)					Later Fiscal Years (\$ millions)				
		2012	2013	2014	2015	2016	2017	2018	2019	2020	2021
CDM	2530	0.414									
Fiscal Year Total		0.414									
		Total FY 2012-2015					Total Later FY 2016-2021				
		0.414					0.000				

**DBF 01009 Berlin Road Streetscape Improvements, Camden County**

AP0000: 40  
 Description: Streetscape improvements will include sidewalk improvements to Berlin Road (Rt 102) between Oldhouse Rd (Rt 686) and White Horse Rd (Rt 702) within the Borough of Lindwood, Camden County. These improvements include the installation of 200 linear feet of new sidewalk on the northern side of Berlin Road between Oldhouse Road (Rt 686) and White Horse Rd (Rt 702). The new sidewalk improvements will be 6 feet wide and will be installed on a concrete surface with a 3-inch gasket edge and install a width of four feet. The improvements also include upgrades to 10 intersections for bicycle accessibility by installing a grade of existing sidewalk and installation of detectable warning surfaces. Sidewalk improvements along the entire 7.203-mile feet of sidewalk require the establishment of the project and release the sidewalk and curb on both sides of the project area and paving of 115 linear feet within the approved street lines in the Borough of Lindwood. 20 historic period style light fixtures and street lamps will be installed along the sidewalk between the project area. The project will include the installation of 100 linear feet of new sidewalk on the southern side of Berlin Road between Oldhouse Road (Rt 686) and White Horse Rd (Rt 702). The project will include any changes to the County roadway or any improvements that will change the character of the roadway. This project does not require the acquisition of any property interest or other project improvements are within the public right-of-way.

Municipality: Lindwood Borough DVRPC Planning Area: Develop Community  
 Project Manager: CDS Program Category: Local System Support  
 DOT Program Category: Degree of Disadvantage:  
 Improvement Type: Streetscape

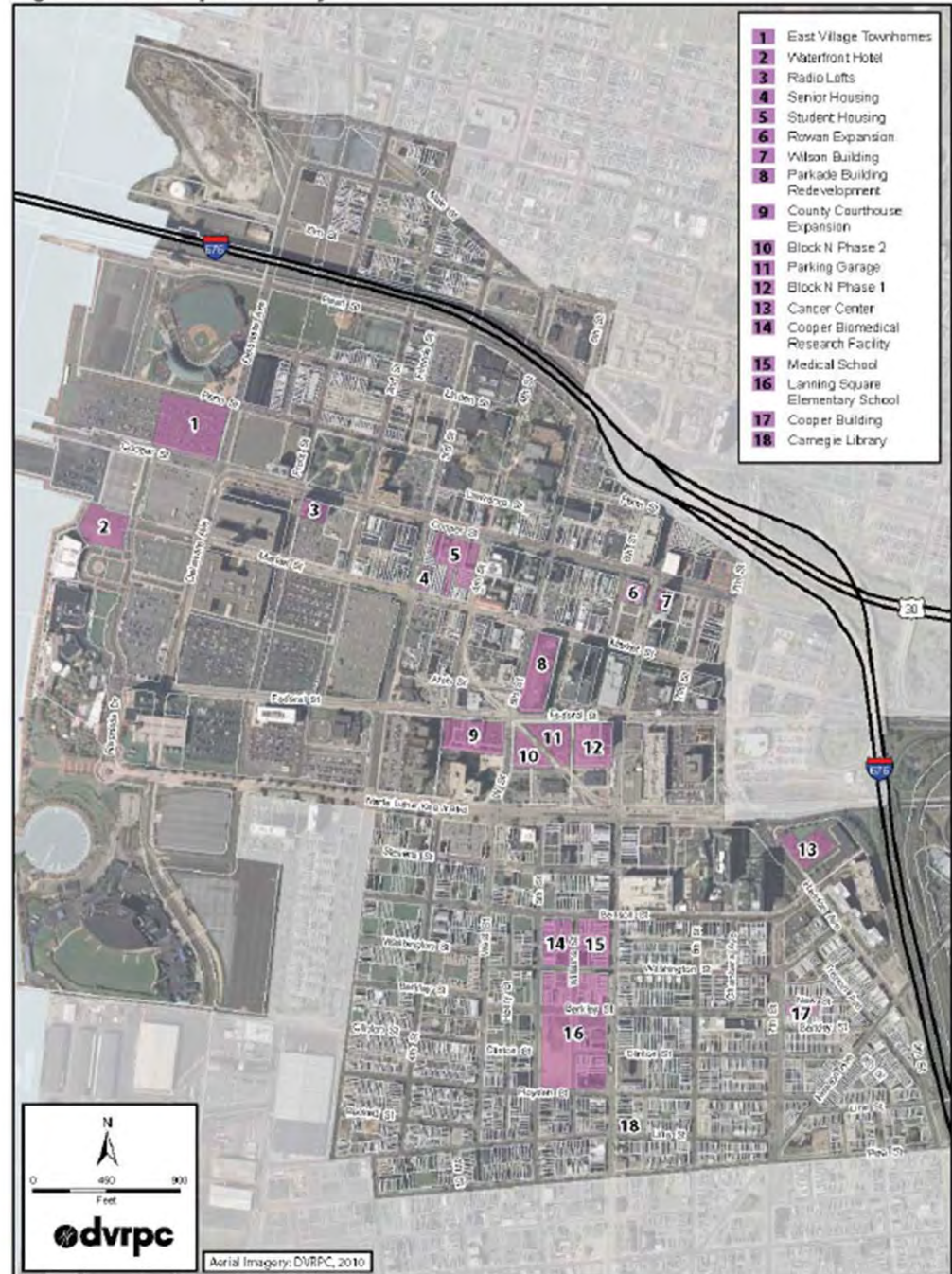
Phase	Fund	TIP Program Years (\$ millions)					Later Fiscal Years (\$ millions)				
		2012	2013	2014	2015	2016	2017	2018	2019	2020	2021
CDM	2530	0.648									
Fiscal Year Total		0.648									
		Total FY 2012-2015					Total Later FY 2016-2021				
		0.648					0.000				

12/10/2012 Page 6



# Recent Work in Camden City

Figure 2: Development Projects

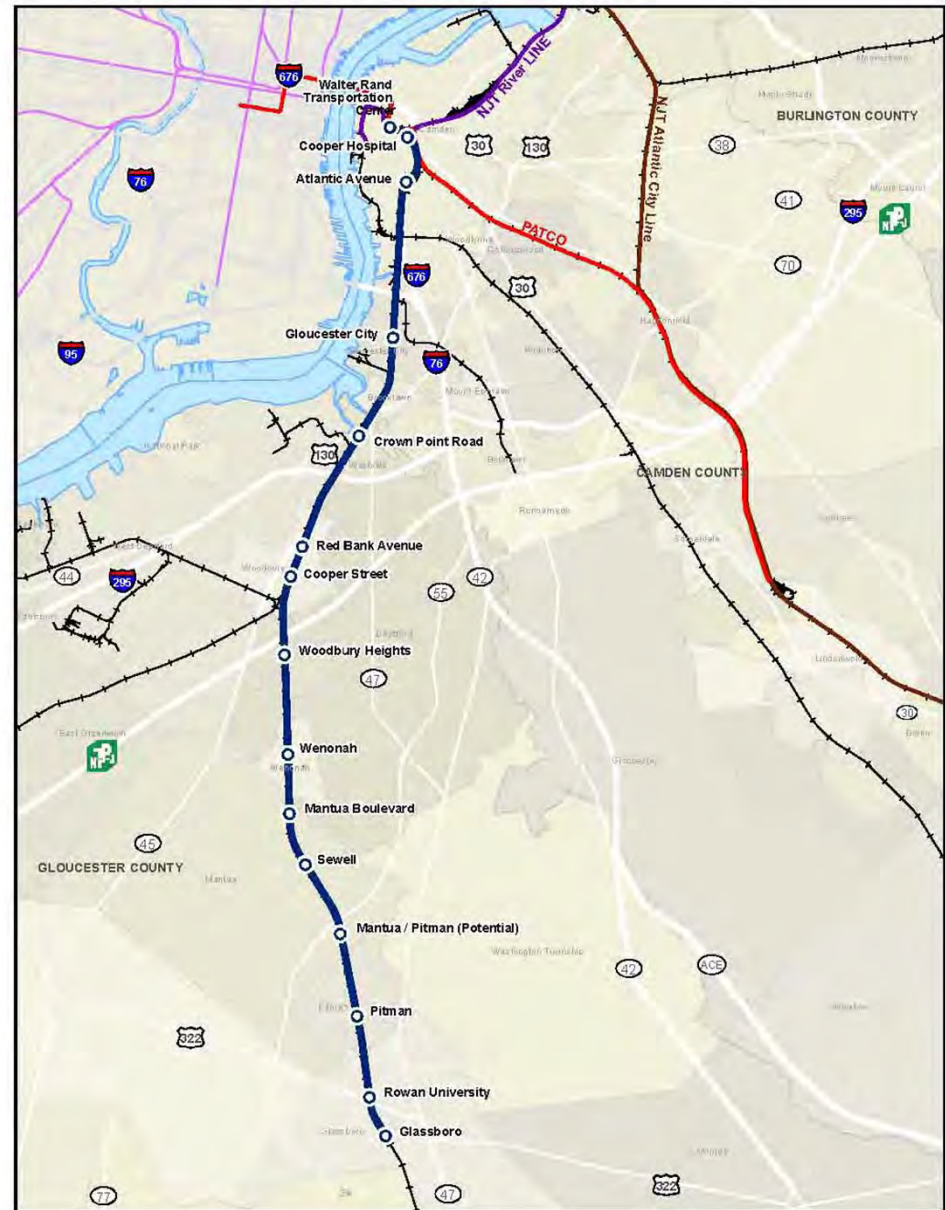


**FINDING SPACE**  
**BALANCING PARKING NEEDS and URBAN VITALITY**  
 in the CITY of CAMDEN

# Recent Work in Camden City



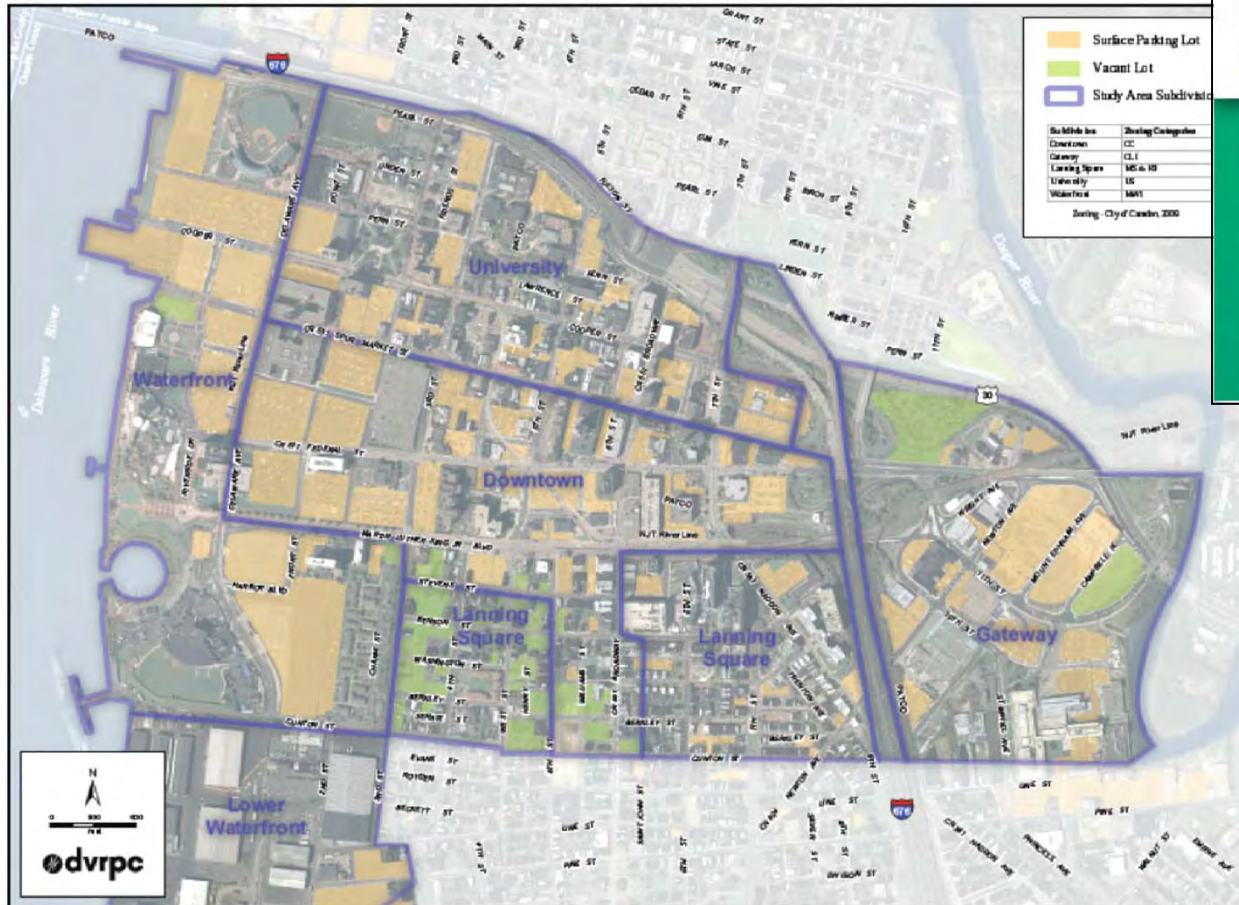
FIGURE 4: GLASSBORO-CAMDEN CORRIDOR



Source: PATCO/DRPA, 2009

# Recent Work in Camden City

Figure 3: Developable Land



DELAWARE VALLEY  
**dvrpc**  
 REGIONAL  
 PLANNING COMMISSION

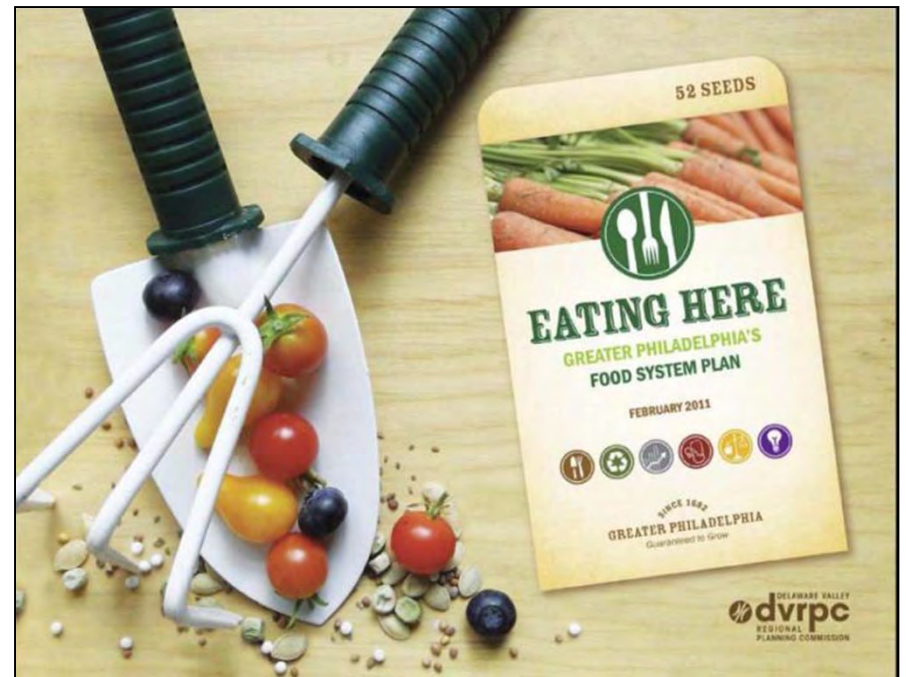
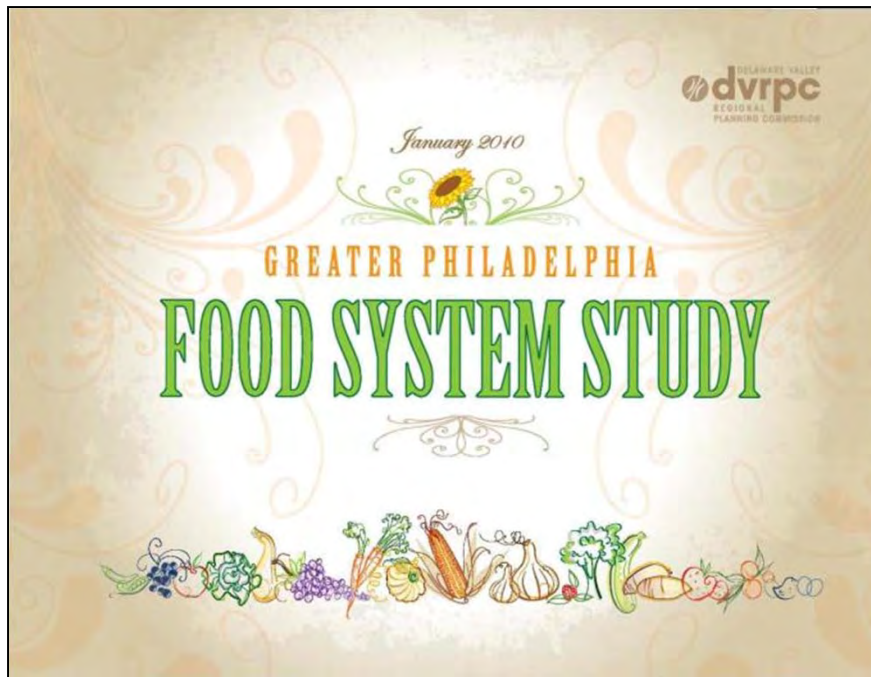
November 2012

City of Camden  
**Access Study**



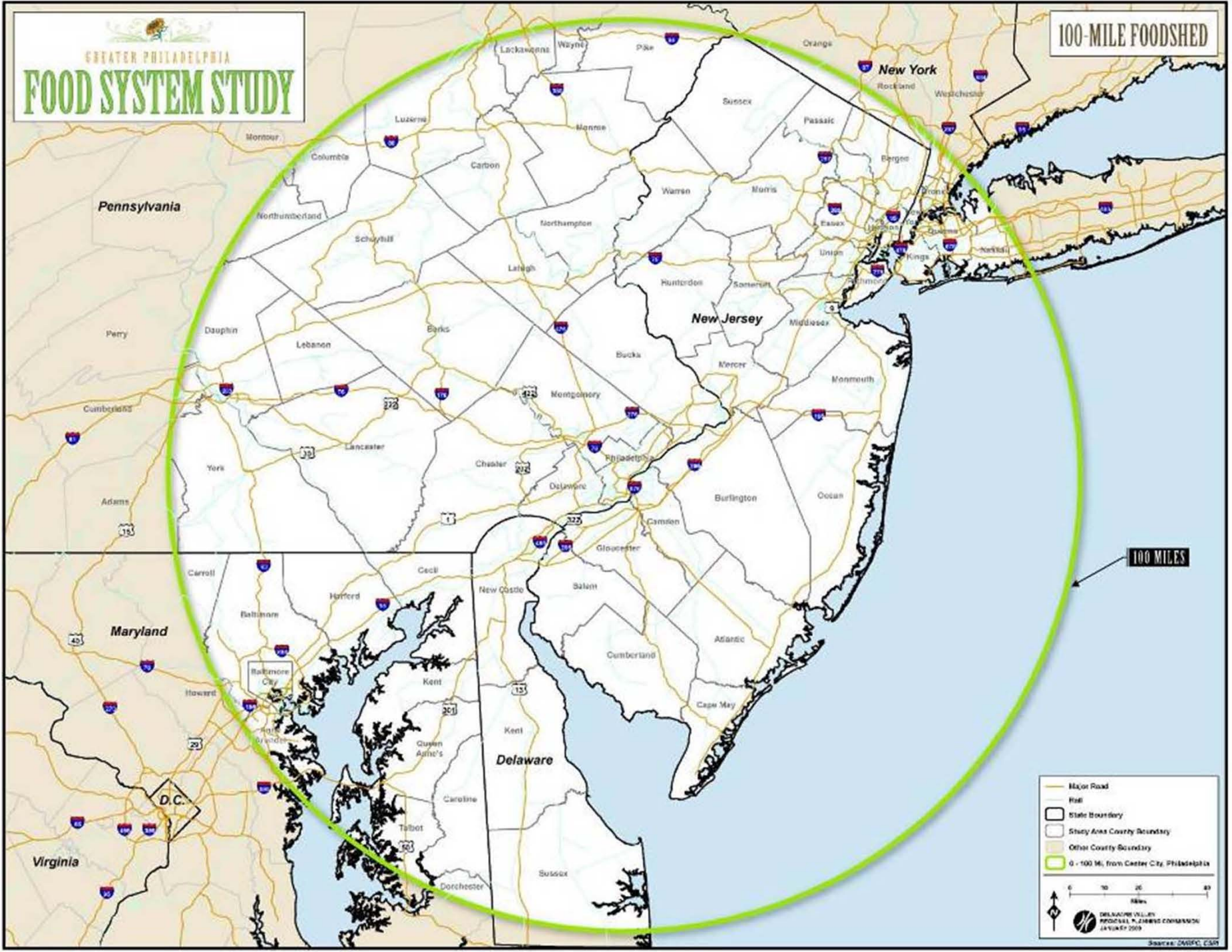
# DVRPC's Regional Food System Planning Work

- In September 2007, DVRPC Board identified a food system study as a top priority
- Identified two large deliverables
- Tied process to funding/implementation opportunity



GREATER PHILADELPHIA  
**FOOD SYSTEM STUDY**

100-MILE FOODSHED



100 MILES

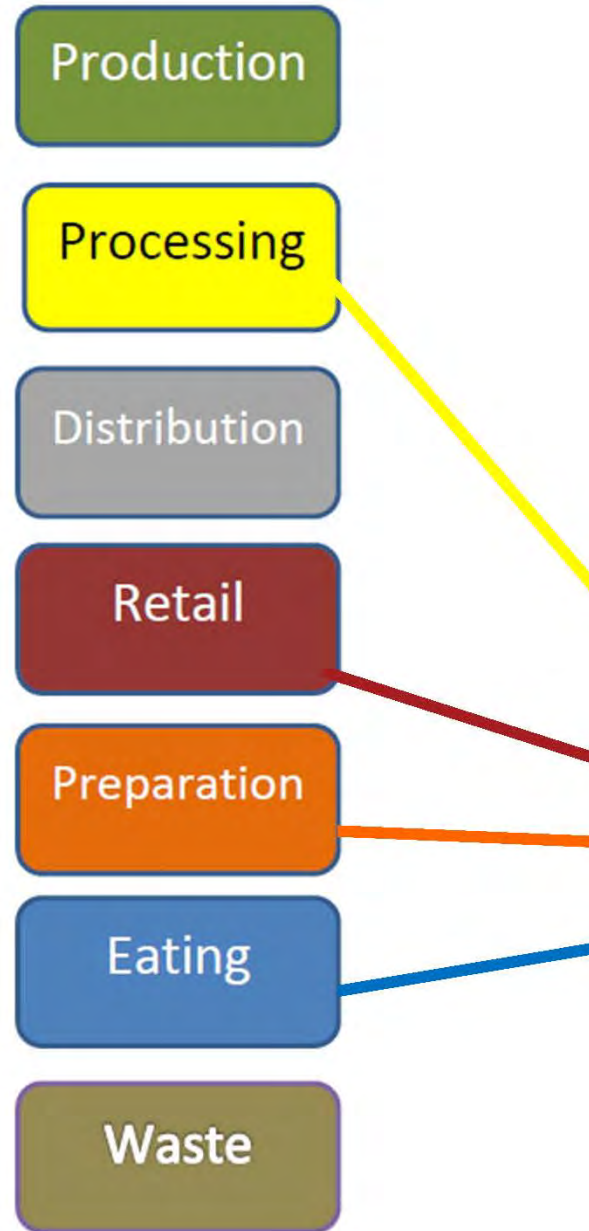
- Major Road
- Rail
- ▭ State Boundary
- ▭ Study Area County Boundary
- ▭ Other County Boundary
- 0 - 100 Mi. from Center City, Philadelphia

0 10 20 30 Miles

DELAWARE DELAWARE COMMISSION  
 JANUARY 2009

Source: GISDC, CSAP

## Parts of the Food System



# Camden Food Economy Strategy

- Co-Investment between **Campbell Soup Company** and **DVRPC**
- Food System vs. **Food Economy**
- Study vs. **Strategy**
- 24-month timeline
  - About 18 months remaining
- Project Team

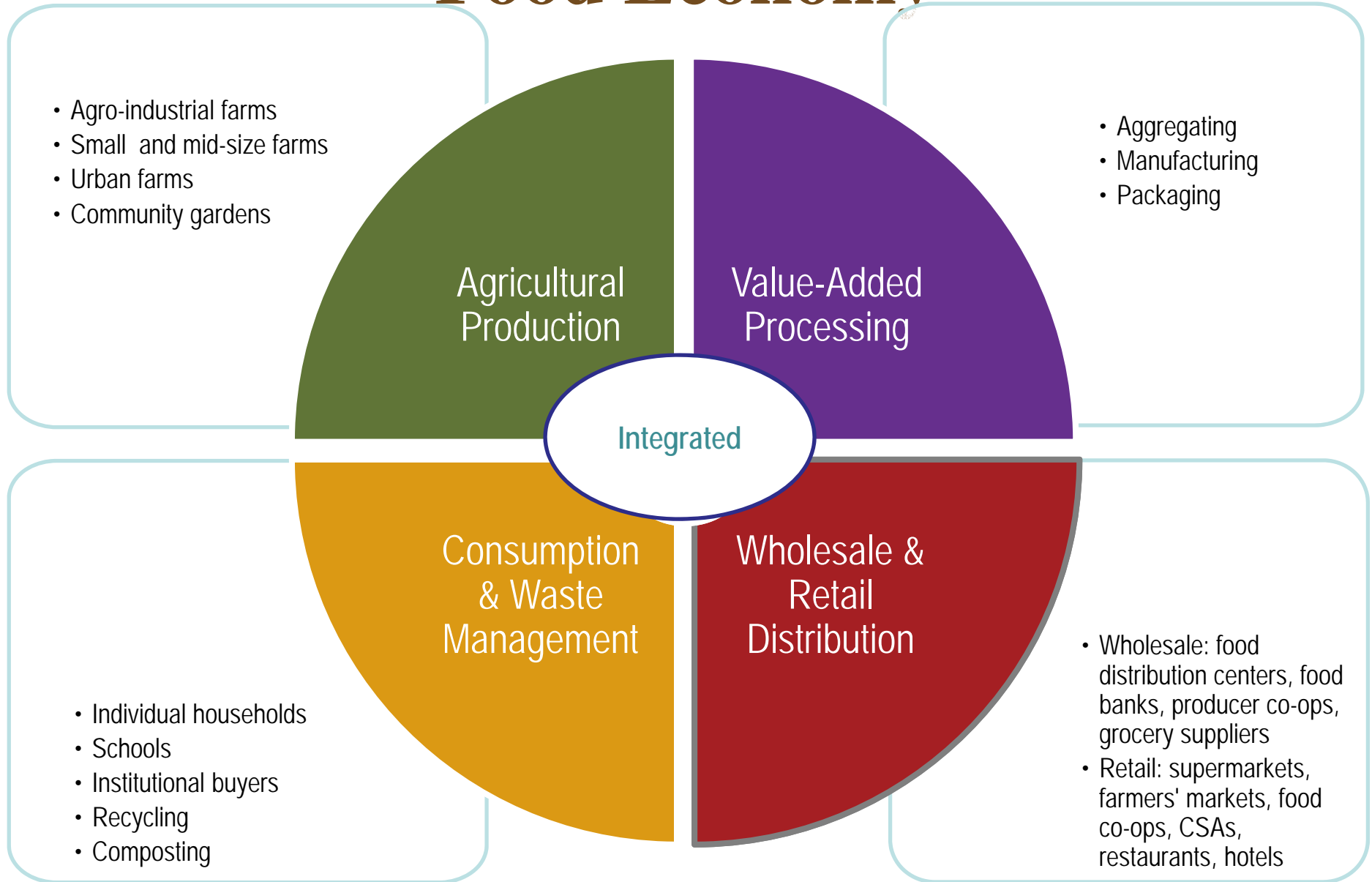


# Camden Food Economy Strategy

- Project's Goal:
  - Through coordinated work and research with a team of partners, create a strategy that identifies stakeholders, funders, current projects and investments, and strategies that are improving and will improve Camden City's Food System and Economy.



# Food Economy



Courtesy of TRF, Opportunity Finance Fund, and CDFI Fund

# Food Economy Examples

- Agricultural Production – Camden City Garden Club
- Value Added Processing – Kaplan and Zubrin
- Wholesale and Retail – Cousins Supermarkets
- Consumption and Waste Management – Organic Diversion



# Your Opinions

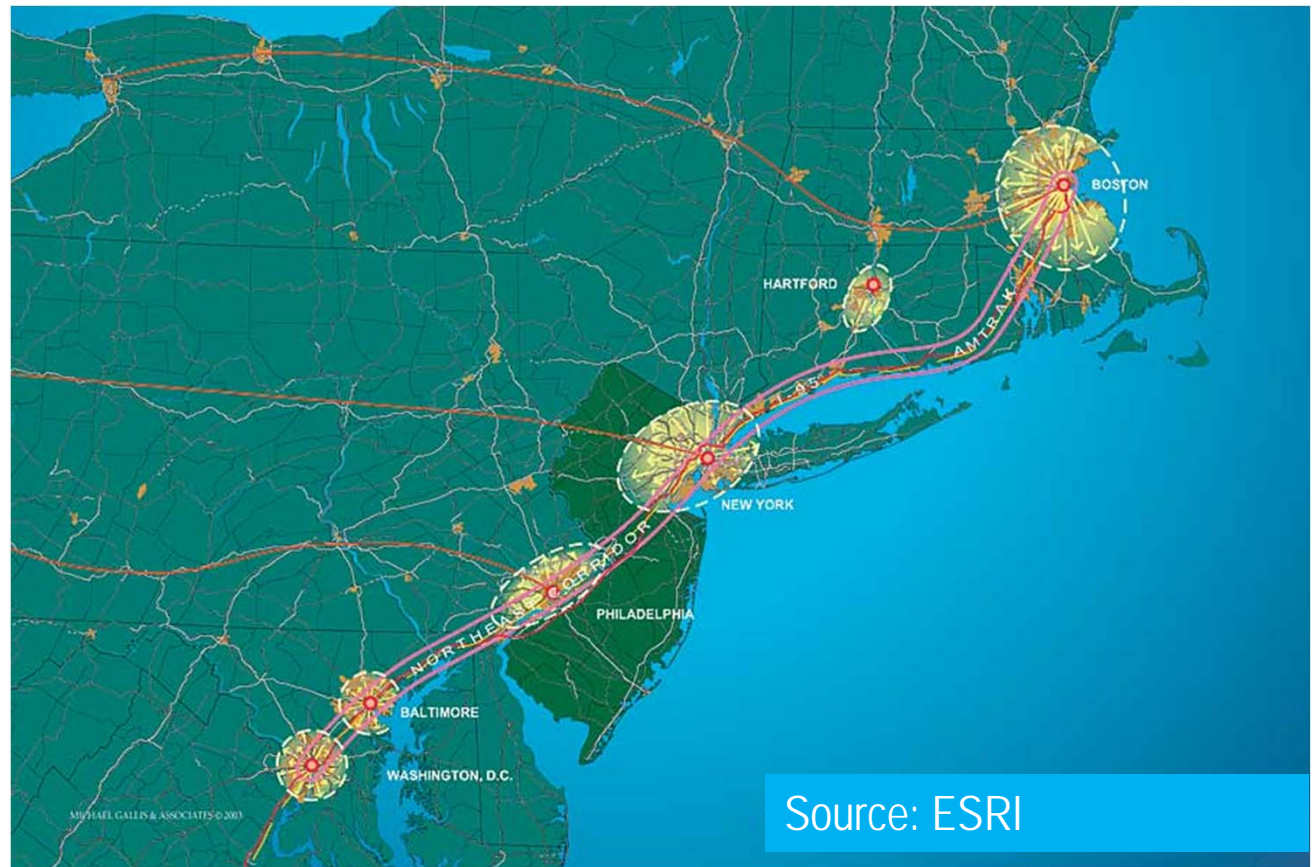
1. What is an example of a food economy business in your community? (Producer/manufacturer, store, restaurant)





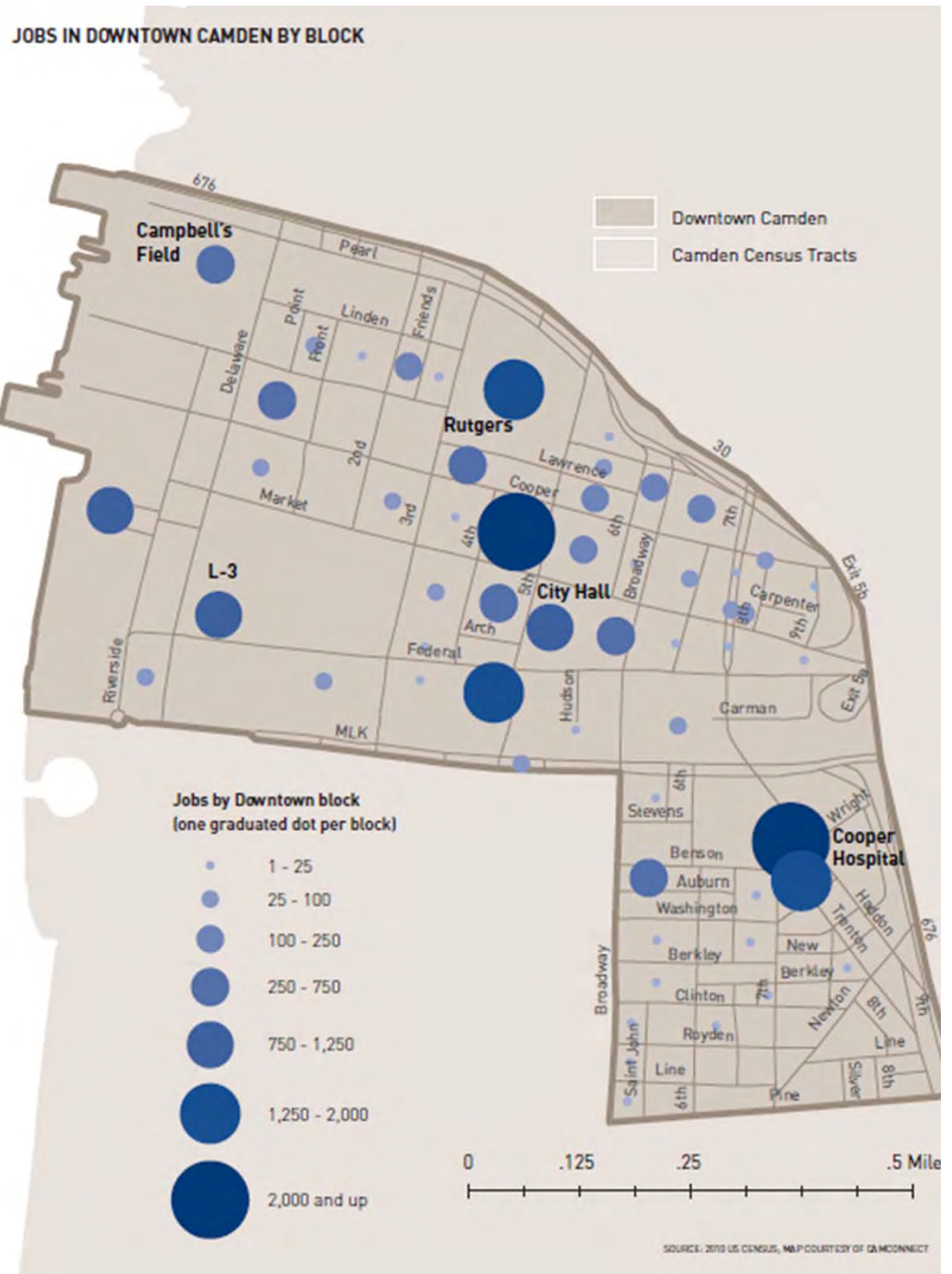
# Camden's Advantages

- Geographic center in a large region; Northeast/Mid-Atlantic mega-region



# Camden's Advantages

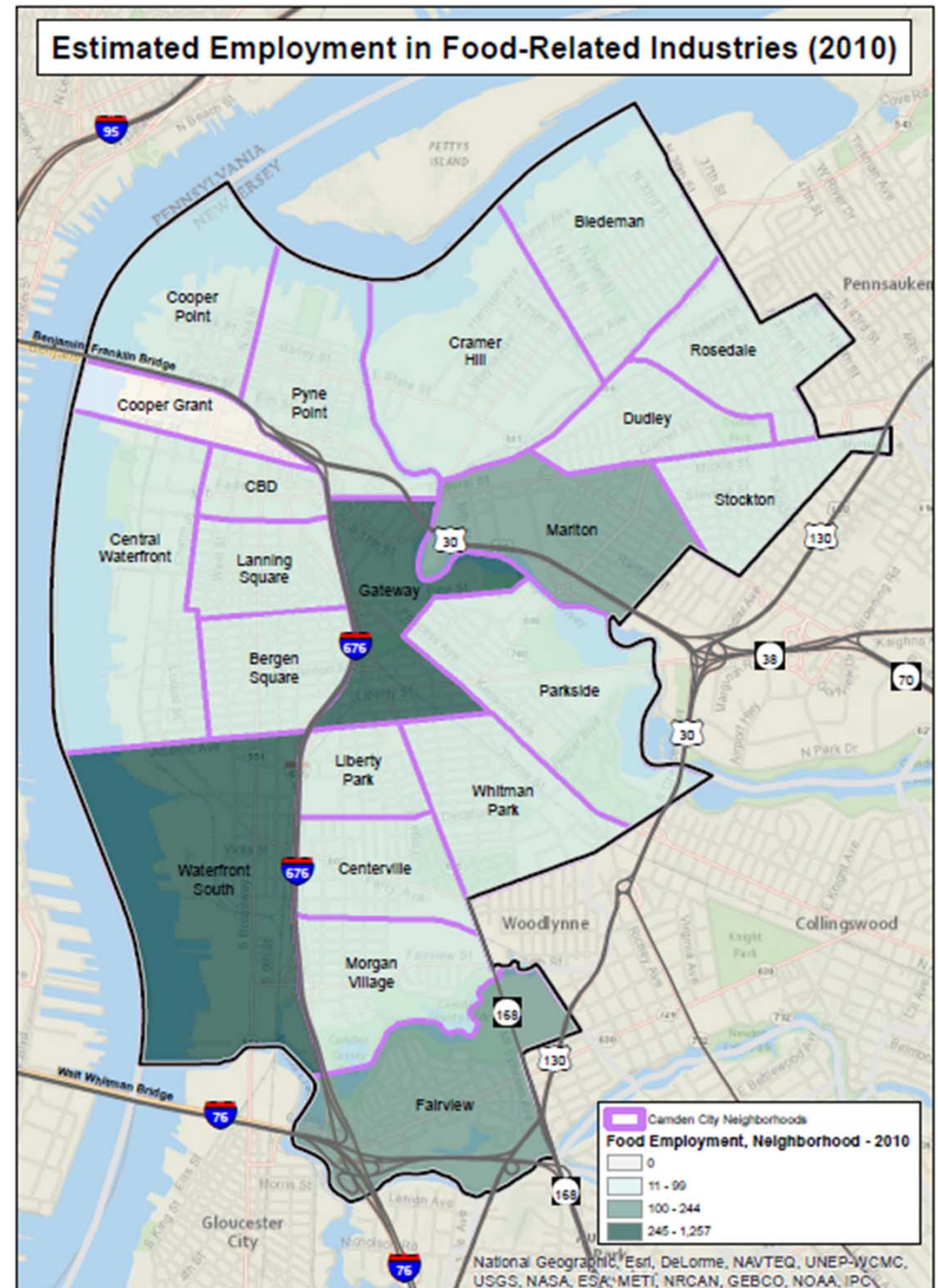
- Geographic center in a large region; Northeast/Mid-Atlantic mega-region
- Employment Center (34,000 employees)



Source: Cooper's Ferry Partnership, 2012

# Camden's Advantages

- Geographic center in a large region; Northeast/Mid-Atlantic mega-region
- Employment Center (34,000 employees)
- Food Employment Center (at least 3,000 employees)



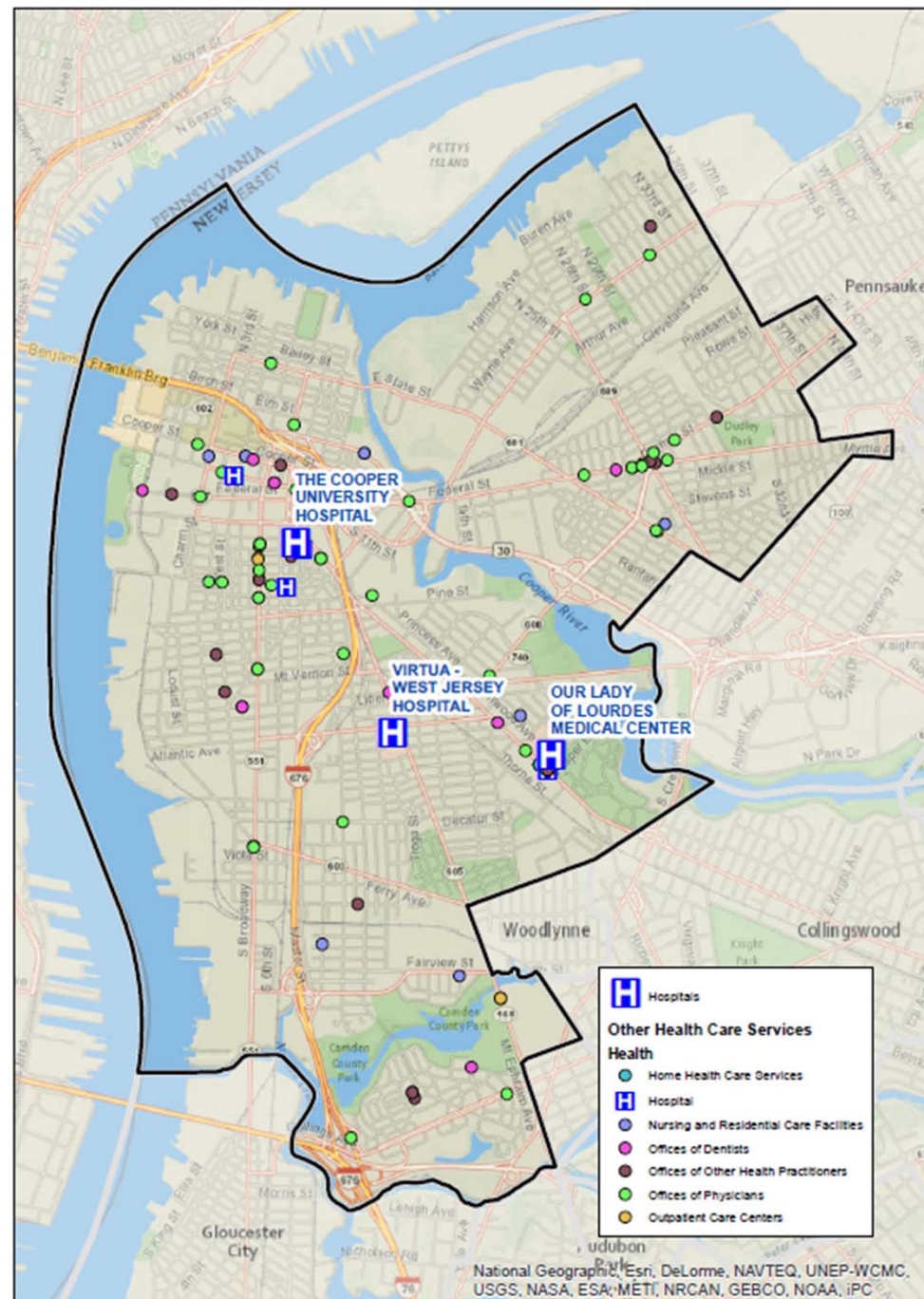
# Camden's Advantages

- Geographic center in a large region; Northeast/Mid-Atlantic mega-region
- Employment Center (34,000 employees)
- Food Employment Center (at least 3,000 employees)
- Access (transit, highway, port)
- Affordable real estate



# Camden's Advantages

- Geographic center in a large region; Northeast/Mid-Atlantic mega-region
- Employment Center (34,000 employees)
- Food Employment Center (at least 3,000 employees)
- Access (transit, highway, port)
- Affordable real estate
- Strong regional institutions
- Extremely active and talented nonprofit community



# Other Food Economy Projects from Around the Nation

## State:

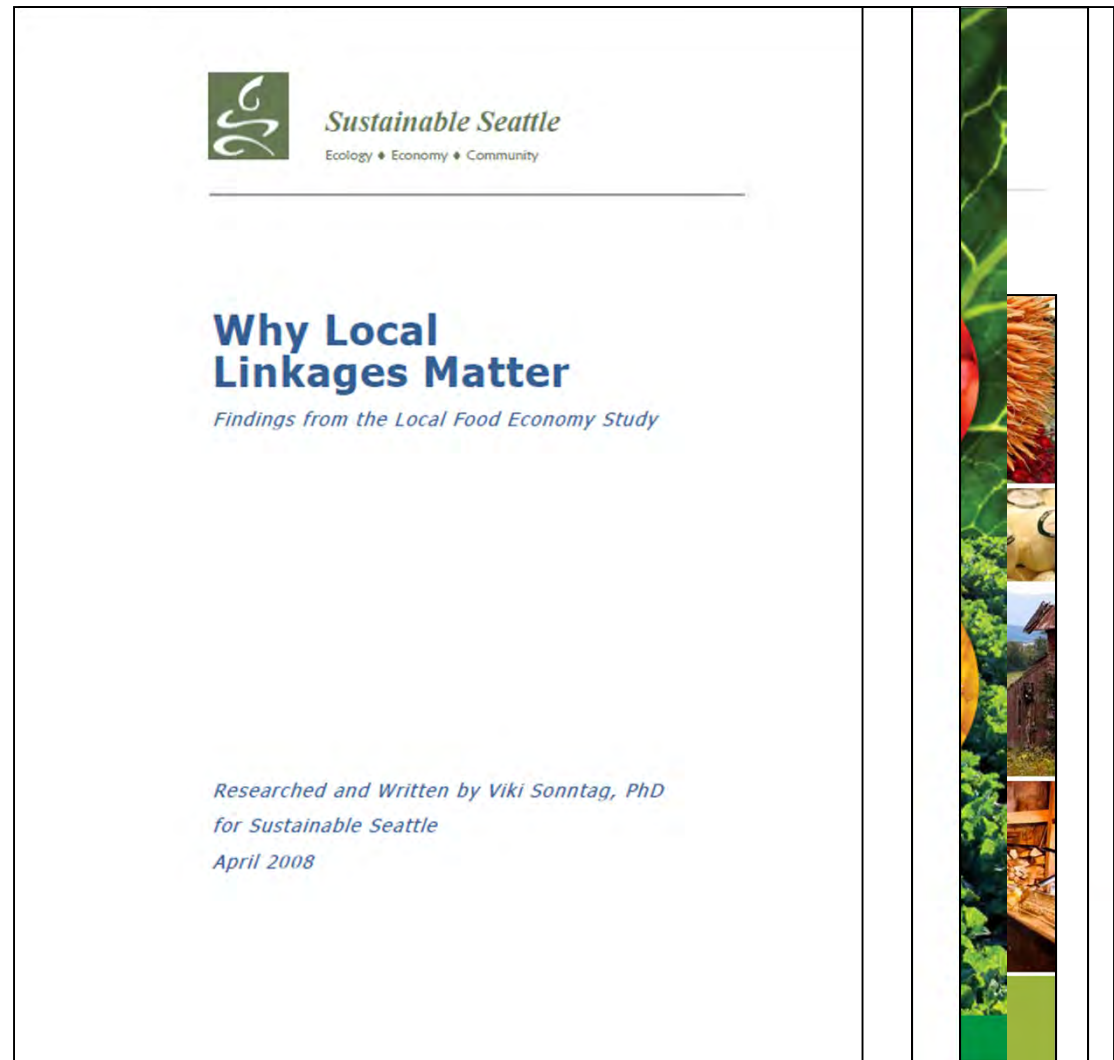
- Illinois (2009)
- North Carolina (2010)
- Vermont (2011)
- West Virginia (2012)

## Region:

- Appalachia (2012)

## City:

- NYC (2007)
- Seattle (2008)



# Stakeholder Analysis

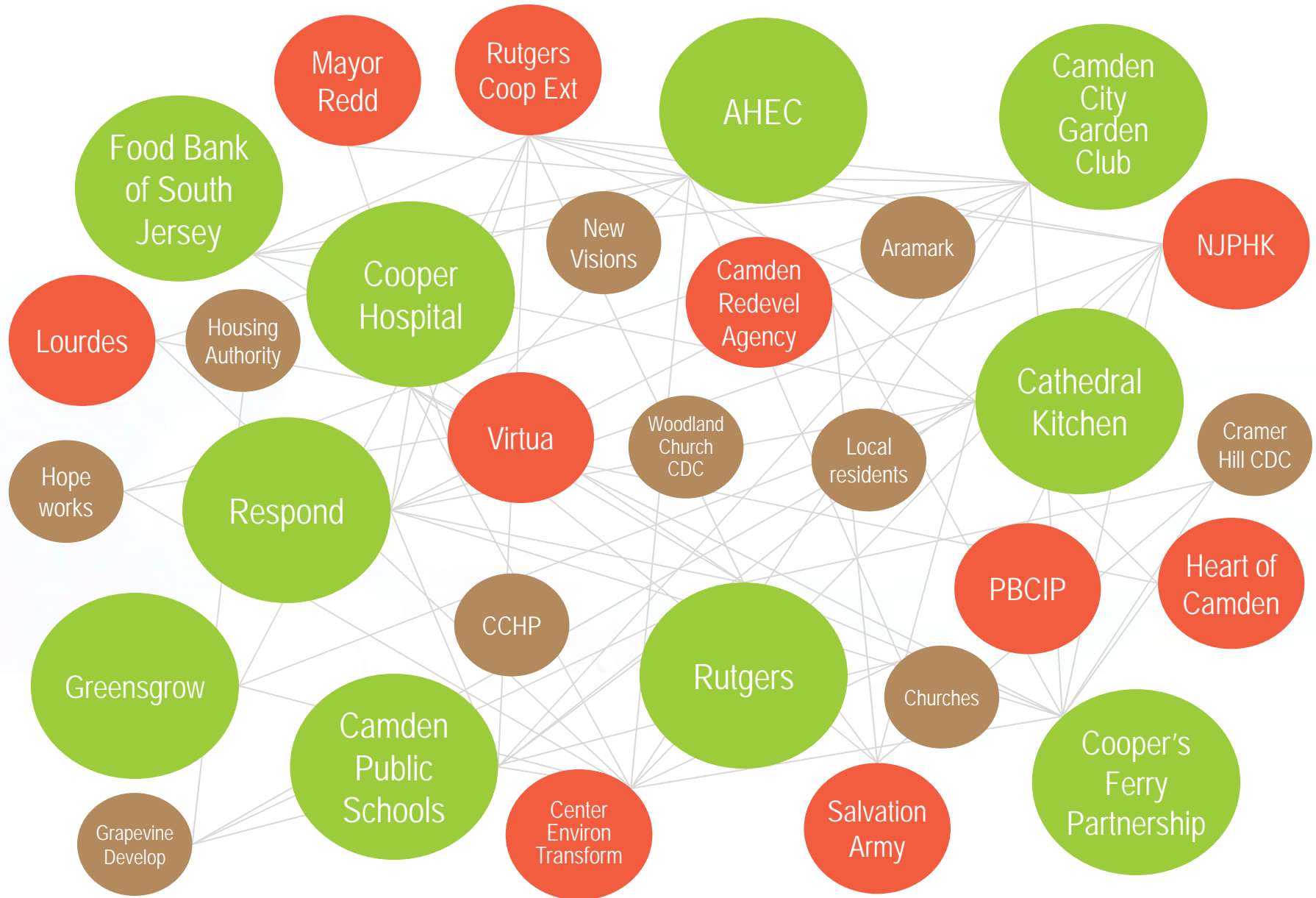
- Learn who is doing what, where, and with whom
- Collect opinions on challenges, opportunities, and changes
- Gather initial recommendations
- Talk to many, but not all, informed stakeholders

The Stakeholder Analysis is...

- NOT a scientific survey
- NOT representative of all stakeholders



# 30 most frequently suggested organizations





# Your Opinions

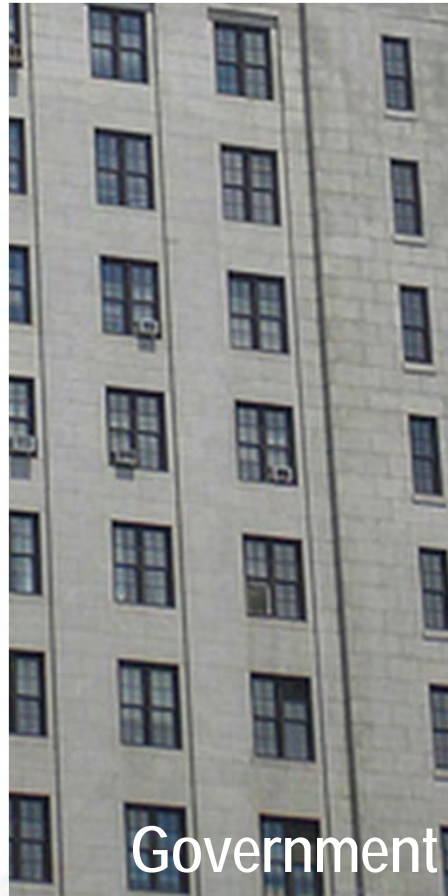
1. *What is an example of a food economy business in your community? (Producer/manufacturer, store, restaurant)*
2. *What are the biggest challenges facing Camden's Food Economy?*



# *“What are the biggest challenges facing Camden’s Food Economy?”*



Economy



Government



Food Retail

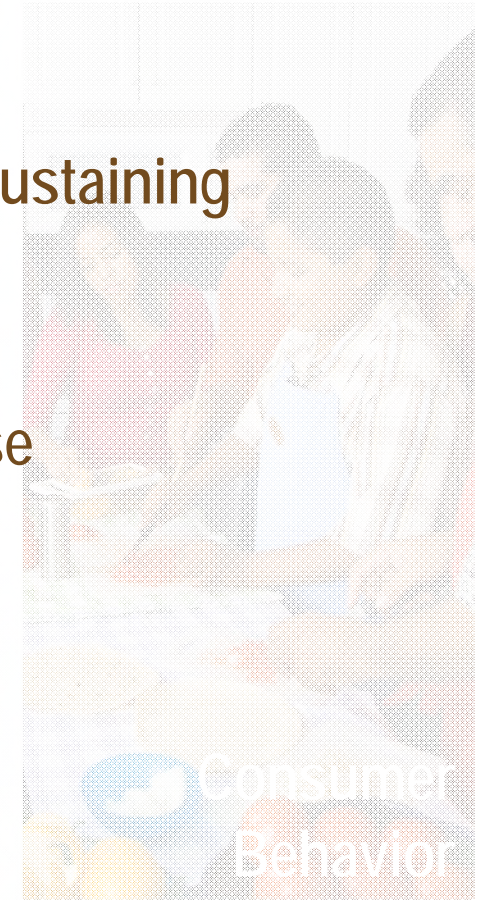
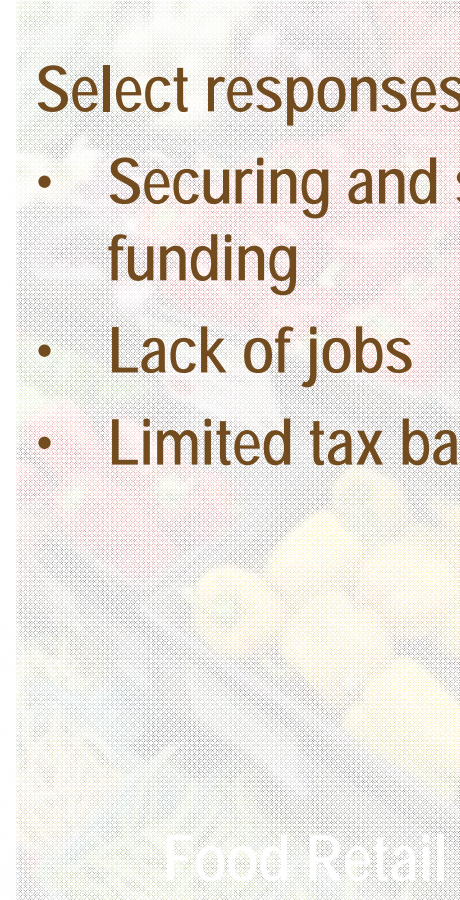


Consumer Behavior



# Challenges: Economy

*"What are the biggest challenges facing Camden's Food Economy?"*



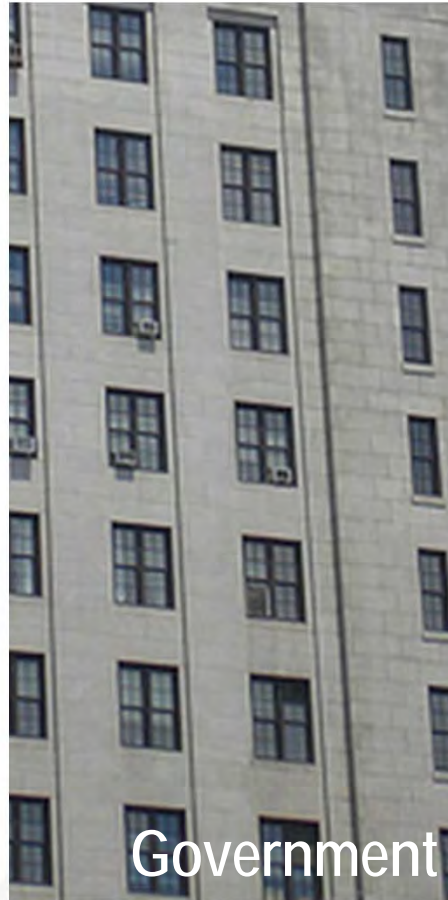
Select responses:

- Securing and sustaining funding
- Lack of jobs
- Limited tax base



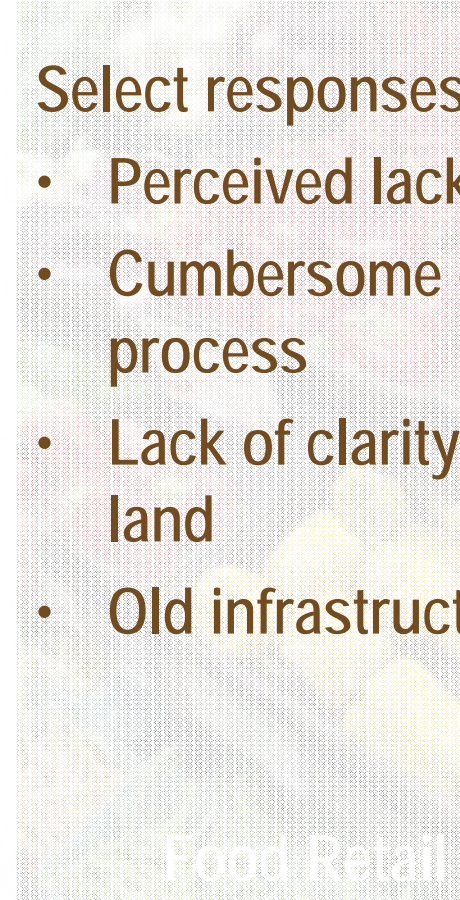
# Challenges: Government

*"What are the biggest challenges facing Camden's Food Economy?"*



Select responses:

- Perceived lack of capacity
- Cumbersome development process
- Lack of clarity on ownership of land
- Old infrastructure



# Challenges: Food Retail

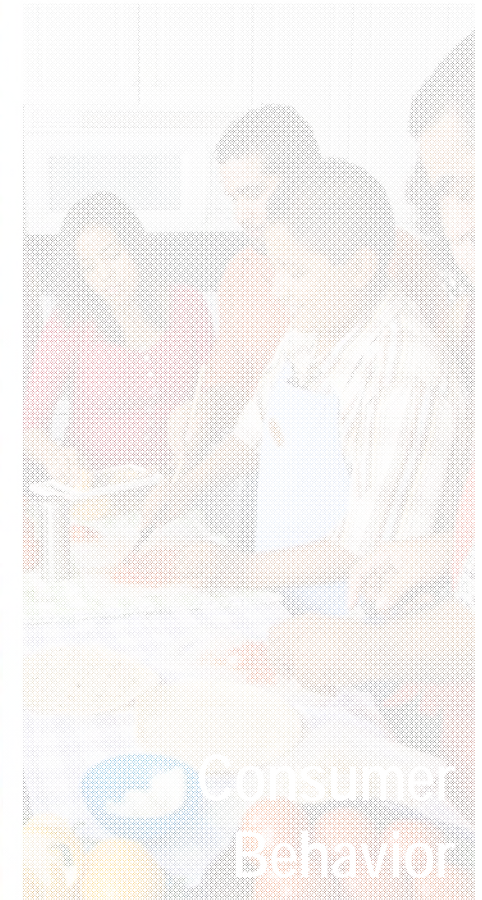
*"What are the biggest challenges facing Camden's Food Economy?"*

Select responses:

- Developing a supermarket
- Lack of healthy options at corner stores
- Farmers' markets are not linked to the food security system

Economy

Government



# Challenges: Consumer Behavior

*“What are the biggest challenges facing Camden’s Food Economy?”*

Select responses:

- Trying to change lifestyles & behavior
- Getting residents to understand what they can contribute

Economy

Government

Food Retail

Consumer Behavior



# Challenges: Other

*“What are the biggest challenges facing Camden’s Food Economy?”*

Topics not in the ‘top 4’ but also mentioned frequently:

- Public safety- real and perceived
- Perceived lack of coordination among organizations



# Your Opinions

1. *What is an example of a food economy business in your community? (Producer/manufacturer, store, restaurant)*
2. *What are the biggest challenges facing Camden's Food Economy?*
3. *What are the biggest opportunities for Camden's Food Economy?*



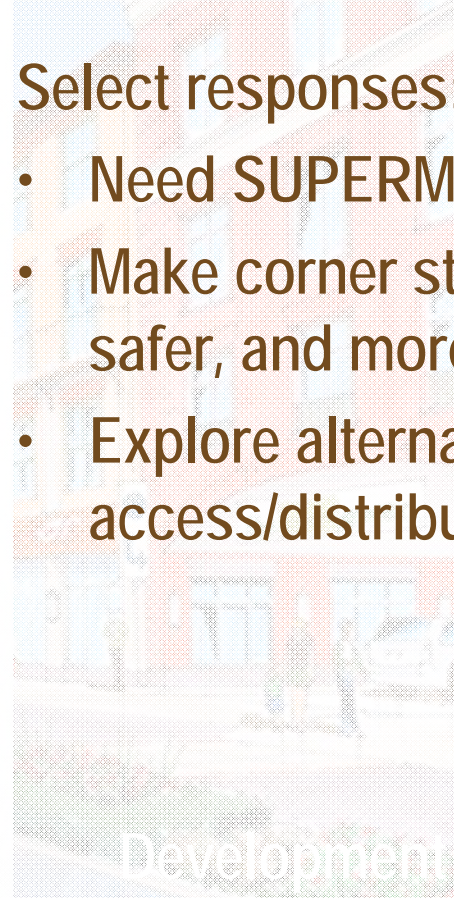


# *“What are the biggest opportunities for Camden’s Food Economy?”*



# Opportunities: Food Retail

*"What are the biggest opportunities for Camden's Food Economy?"*



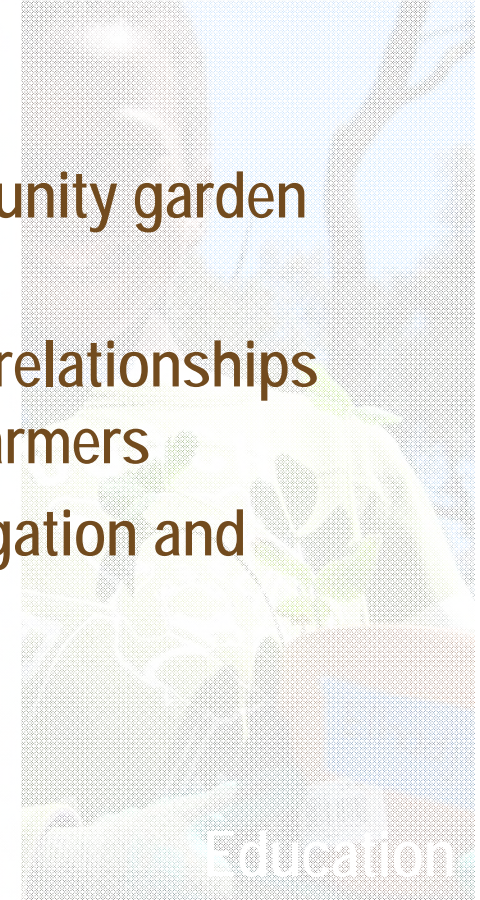
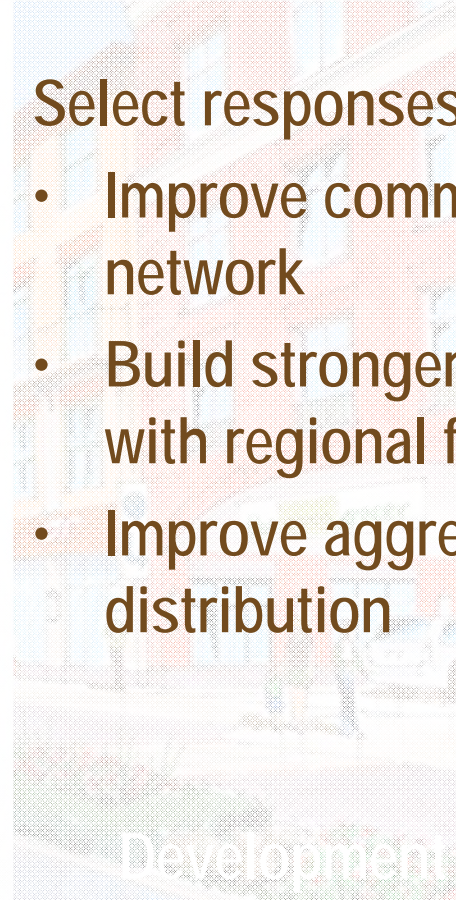
Select responses:

- Need SUPERMARKETS!
- Make corner stores healthier, safer, and more welcoming
- Explore alternative access/distribution models



# Opportunities: Local Food

*"What are the biggest opportunities for Camden's Food Economy?"*



Select responses:

- Improve community garden network
- Build stronger relationships with regional farmers
- Improve aggregation and distribution



# Opportunities: Development

*"What are the biggest opportunities for Camden's Food Economy?"*

Select responses:

- Good time for investors to come into the city
- Haddon Avenue Transit Village
- Downtown opportunities
- Local government is encouraging development

Food Retail

Local Food



Development



Education



# Opportunities: Education

*"What are the biggest opportunities for Camden's Food Economy?"*

## Select responses:

- Program delivery through churches and day care centers
- Educate both parents and kids
- Cooking and tasting demos at farmers' markets
- Focus on healthy eating rather than obesity

Food Retail

Local Food

Development

Education



# Changes: Consumer Behavior

*“What are the biggest changes to Camden’s Food Economy in the last 5-10 years?”*



Select responses:

- Institutional kitchens are changing
- Youth nutrition educational programs have been successful
- Eating habits are getting worse by generation

Institutions

Lack of Change



# Your Opinions

- 1. What is an example of a food economy business in your community? (Producer/manufacturer, store, restaurant)*
- 2. What are the biggest challenges facing Camden's Food Economy?*
- 3. What are the biggest opportunities for Camden's Food Economy?*
- 4. Which three (3) issues matter the most to you?*



# Your Opinions

1. *What is an example of a food economy business in your community? (Producer/manufacturer, store, restaurant)*
2. *What are the biggest challenges facing Camden's Food Economy?*
3. *What are the biggest opportunities for Camden's Food Economy?*
4. *Which three (3) issues matter the most to you?*
5. *What's your idea? Big or little. How would you improve food access, the food system, or the food economy in Camden City?*





# DVRPC's Initial Conclusions

- (Healthy) food access is of paramount concern
- Access is both an issue of supply and demand
- A lot of great things already happening in Camden
- Economic development and job creation are key
- Everyone (individual, organization, industry, business) has different perspectives and needs





# Thank You!

[WWW.DVRPC.ORG/FOOD](http://WWW.DVRPC.ORG/FOOD)

Alison Hastings  
[ahastings@dvrpc.org](mailto:ahastings@dvrpc.org)  
215.238.2929

Karin Morris  
[kmorris@dvrpc.org](mailto:kmorris@dvrpc.org)  
215.238.2858

Kim Korejko  
[kkorejko@dvrpc.org](mailto:kkorejko@dvrpc.org)  
215.238.2936

Amy Verbofsky  
[averbofsky@dvrpc.org](mailto:averbofsky@dvrpc.org)