



TIP ACTIONS

Transportation Improvement Program

New Jersey TIP (FY2020-2023)

Pennsylvania TIP (FY2021-2024)

PHOTO CREDIT: PENNSYLVANIA DEPARTMENT OF TRANSPORTATION

DVRPC Board | July 2021



Coatesville Train Station

Chester County | Remove Funding from TIP

- **TIP Amendment**
- **Action:** Reduce FY21 CON funds by \$33,954,000
\$13,850,000 FTA Section 5307 / \$13,314,000 FTA Section 5337 /
\$6,790,000 State 1516
- **Reason:** Funds associated with other Urbanized Areas (UZA) in PA inadvertently programmed in DVRPC TIP
Keystone Corridor funds provided by FTA will continue to be directed to Coatesville Train Station
- **Background:**
 - *Total cost estimate = \$64,949,000*
 - *\$21,237,000 already placed into a grant*

Coatesville Train Station Funding – FY21 CON on FY2021 PA TIP

**Reduce funds on DVRPC TIP by:
\$33,954,000**

**\$13,850,000 FTA Section 5307
\$13,314,000 FTA Section 5337
\$6,790,000 State 1516**

**Harrisburg Area Transportation Study TIP
\$12,671,000**

**\$3,884,000 FTA Section 5307
\$6,253,000 FTA Section 5337
\$2,534,000 State 1516**

**Lancaster MPO TIP
\$20,884,000**

**\$7,452,000 FTA Section 5307
\$9,255,000 FTA Section 5337
\$4,177,000 State 1516**

**\$21,237,000
already in grant**

**DVRPC TIP
\$9,759,000**

**\$4,172,000 FTA Section 5337
\$3,635,000 FTA Section 5307
\$1,952,000 State 1516**

Funds will continue to be directed to the Coatesville Train Station project

TIP ACTION | Proposed - PA

Request Board Approval of TIP Amendment

- **Coatesville Train Station**

Reduce FY21 CON funds by \$33,954,000

\$13,850,000 FTA Section 5307

\$13,314,000 FTA Section 5337

\$6,790,000 State 1516

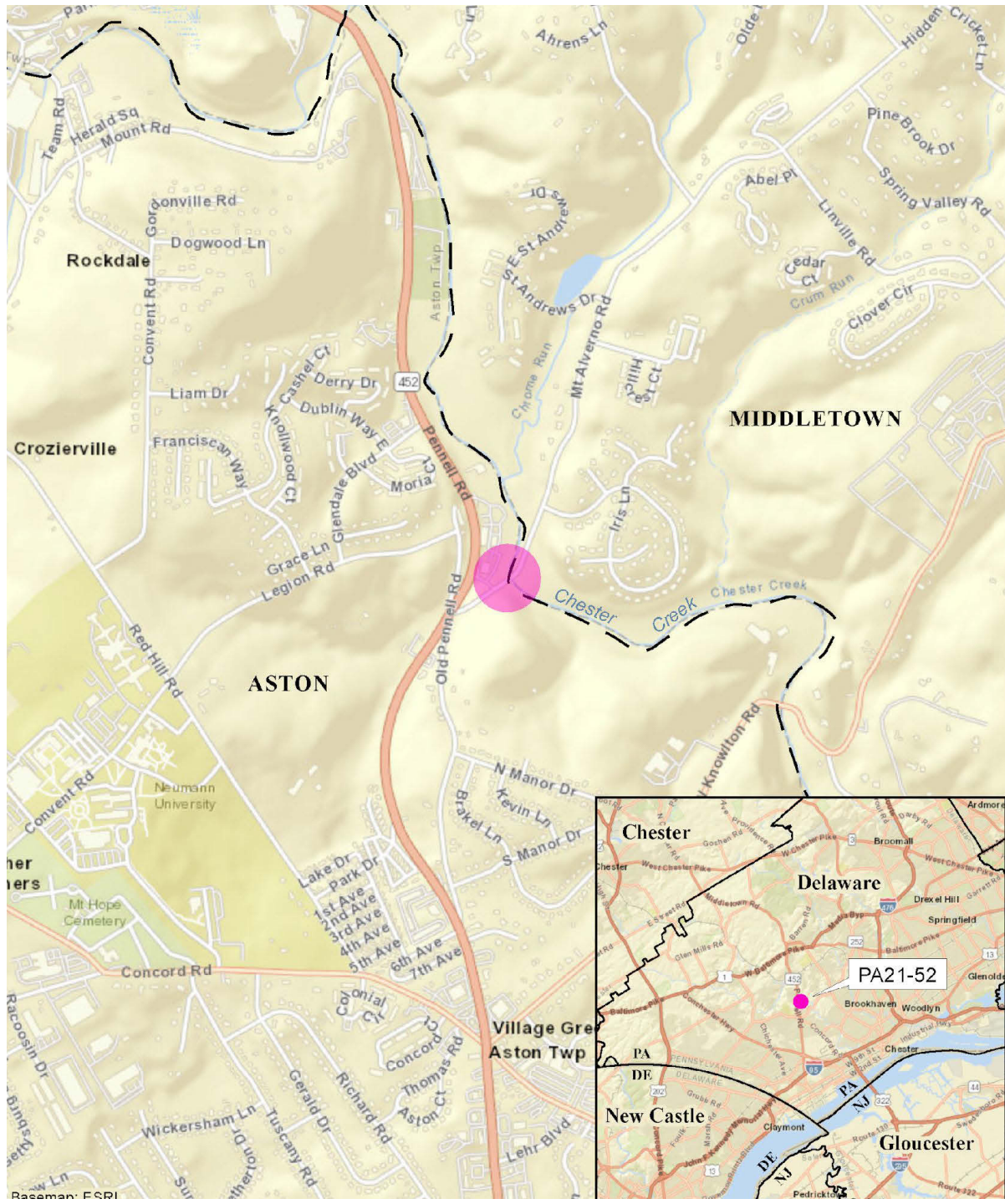
- \$12,671,000 to Harrisburg Area Transportation Study TIP
- \$20,884,000 to Lancaster MPO TIP



Mount Alverno Road Bridge Over Chester Creek (CB #9)

Delaware County | Add CON Phase Back into TIP

- **TIP Amendment**
- **Action:** Add CON phase back into TIP for \$4,500,000
(FY21: \$363,000 BOF / \$938,000 STU / \$244,000 State 183 / \$82,000 Local;
FY22: \$2,299,000 BOF / \$431,000 State 183 / \$143,000 Local)
- **Reason:** Programmed for CON in previous FY2019 TIP;
Expected to be obligated/encumbered during FY2021 TIP Update;
Delays encountered during constructability reviews.
- **Background:**
 - *Total estimated cost = \$5,104,000 for the pre-CON and CON phases*



Bridge replacement

- Hydraulic improvements
- Approaches reconstructed to provide wider shoulders
- Fill guiderail gaps

TIP ACTION | Proposed - PA

Request Board Approval of TIP Amendment

- **Mount Alverno Road Bridge Over Chester Creek (CB #9)**

Add CON phase back into TIP for \$4,500,000

FY21: \$363,000 BOF / \$938,000 STU / \$244,000 State 183 / \$82,000 Local

FY22: \$2,299,000 BOF / \$431,000 State 183 / \$143,000 Local



Barbadoes Street Connector Road

Montgomery County | Low Bid Cost Savings

- **TIP Amendment**
- **Action:** Reduce CON phase by \$5,198,000
(FY22: \$1,000,000 NHPP / \$3,221,000 STU / Toll Credit
FY23: \$932,000 STU / Toll Credit
FY24: \$45,000 STU / Toll Credit)
- **Reason:** Low bid cost savings
- **Background:**
 - *Project is breakout from US 202, Markley Street Improvements (Section 510)*



- Extension of Barbadoes Street between Lafayette & Washington Streets
- Eastern connection to Water Street
- Addresses truck turning conflicts at intersection of Water & Main Streets
- Sidewalk on east side to provide access between Schuylkill River Trail and Lafayette Street sidewalk
- New sidewalk connections to adjacent parking lot

TIP ACTION | Proposed - PA

Request Board Approval of TIP Amendment

- **Barbadoes Street Connector Road**

Reduce CON phase by \$5,198,000

FY22: \$1,000,000 NHPP / \$3,221,000 STU / Toll Credit

FY23: \$932,000 STU / Toll Credit

FY24: \$45,000 STU / Toll Credit



Henry Ave Corridor Safety Improvements, Phase 2

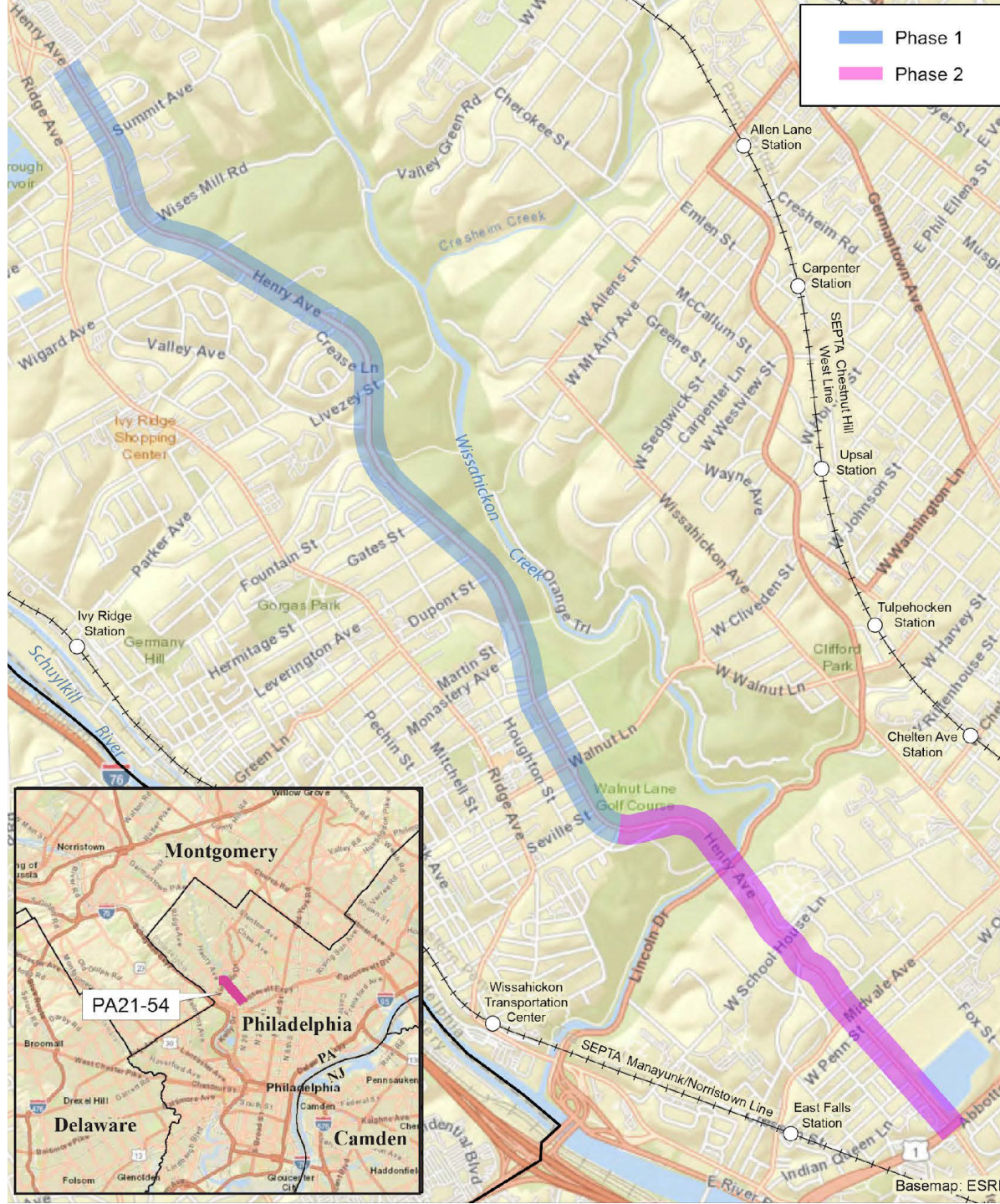
City of Philadelphia | Cost Increase

- **TIP Amendment**
- **Action:** Increase CON phase by \$8,801,000
(FY21: \$2,000,000 NHPP / \$3,801,000 STU / Toll Credit;
FY22: \$3,000,000 STU / Toll Credit)
- Increase work limits to Barnes Street
- **Reason:** Additional funding to address community concerns, increased work limits
- **Background:**
 - *CON phase increasing from \$5,999,000 to \$14,800,000*



Additional work includes:

- Left turn lanes,
- Raised intersection,
- Bumpouts & medians,
- Sidewalk & ADA ramps,
- Shared-use bicycle and pedestrian path,
- Pavement markings,
- Electronic speed feedback signs,
- Philadelphia Water Department drainage & water relocation,
- Interconnected traffic signals, and
- Upgraded traffic signals.



■	Phase 1
■	Phase 2

Additional work includes:

- Left turn lanes,
- Raised intersection,
- Bumpouts & medians,
- Sidewalk & ADA ramps,
- Shared-use bicycle and pedestrian path,
- Pavement markings,
- Electronic speed feedback signs,
- Philadelphia Water Department drainage & water relocation,
- Interconnected traffic signals, and
- Upgraded traffic signals.

TIP ACTION | Proposed - PA

Request Board Approval of TIP Amendment

- **Henry Ave Corridor Safety Improvements, Phase 2**
Increase CON phase by \$8,801,000
FY21: \$2,000,000 NHPP / \$3,801,000 STU / Toll Credit;
FY22: \$3,000,000 STU / Toll Credit
Increase work limits to Barnes Street





THANK YOU!



PHOTO CREDIT: PENNSYLVANIA DEPARTMENT OF TRANSPORTATION



Economic Recovery Collaborative

Final Report Summary
presented to the Delaware Valley
Regional Planning Commission

July 22, 2021



PRESENTED BY

HEATHER SIMMONS, GLOUCESTER COUNTY COMMISSIONER

JOSEPH DIVIS, INTERIM PRESIDENT, AT&T NEW JERSEY

Our Community Priorities

- Stem the Tide of COVID-19
- Administer Vaccinations
- Rebuild the Local Economy

ERC Mission & Vision

- Develop strategies for economic recovery and growth
- Focus on addressing barriers to success, especially in technology, transportation and education
- Seek input from community stakeholders
- Attract new business and industry
- Create jobs

ERC Recommendations

1. Create an economic development “Navigator”

Progress:

- Out to RFP for this professional service

ERC Recommendations

2. Provide direct support to small businesses with focus on women- and minority-owned businesses

Progress:

- Established Small Business and Microenterprise Recovery Grant with CDBG (Cares Act funds)
- Developed online recovery resource directory

ERC Recommendations

3. Develop business Information Hubs

Progress:

- Feasibility study about to be released (Triad Associates; CDBG funds)
- Identified site for Pilot “Innovation Station” and developing plan (America’s Recovery Act funds)

ERC Recommendations

4. Enhance Broadband Service

Progress:

- Identifying areas in need of service; assessing costs
- Working with federal delegation on Infrastructure Bill

ERC Recommendations

5. Address Public Transportation Needs

Progress:

- Ensure completion of Light Rail Line
- Study for new shuttle routes (DVRPC)

ERC Recommendations

6. Develop training and education for new and expanding industries, including:
 - Alternative energy (especially offshore wind)
 - Advanced manufacturing
 - Cannabis
 - Film

ERC Recommendations

6. Develop training and education for new industries:

Progress:

- Established SJ Regional Film Cooperative
- Collaborating with K-12, RCSJ and Rowan on training
- Secured labor agreements for offshore wind

ERC Recommendations

6. Develop training and education for new industries:

Progress:

- Construction of wind turbine facilities underway at Paulsboro Marine Terminal
- Working with state on grants for offshore wind/cannabis
- Assisting municipalities with cannabis

ERC Recommendations

7. Grow employment opportunities for our neurodiverse population

Progress:

- Investing in Project Search to enhance training, education and employment for neurodiverse population (Human Services and NJDOL)

ERC Recommendations

8. Create a “shovel-ready” properties inventory

Progress:

- Secured partnership with NJEDA to leverage \$14b incentive package for Gloucester County

ERC Recommendations

8. Create a “shovel-ready” properties inventory

Progress:

- Working with CME on “shovel-ready” properties inventory and marketing plan, including compilation and analysis of data for selected sites for development and paying special attention to locations near Rowan’s West Campus, greenfields and brownfields properties

ERC Recommendations

9. Bolster Tourism and Hospitality

Progress:

- Working with Visit South Jersey on promotional, technical and financial support to the tourism & hospitality industry, outdoor recreation facilities and County parks
- Developing an interactive tourism map

Encouraging Continued Involvement

- Regular Updates
- Invitations to Participate
- Spreading the Word

Thank You and Questions

Heather Simmons, Gloucester
County Commissioner
hsimmons@co.gloucester.nj.us

Joseph Divis, Interim President,
AT&T New Jersey
joseph.divis@att.com



DRAFT



connections

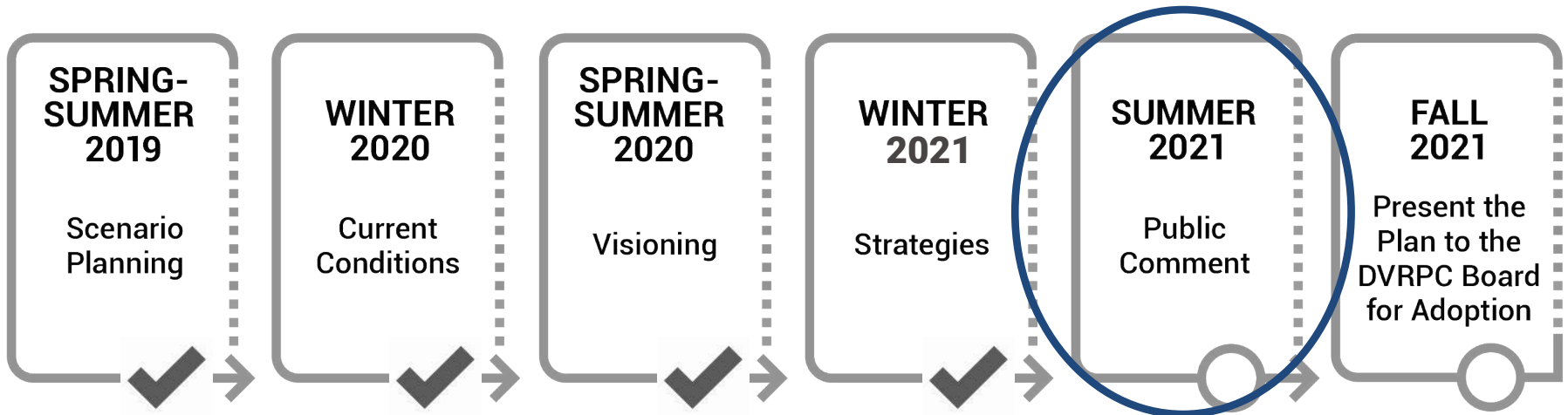
2050

PLAN for GREATER PHILADELPHIA

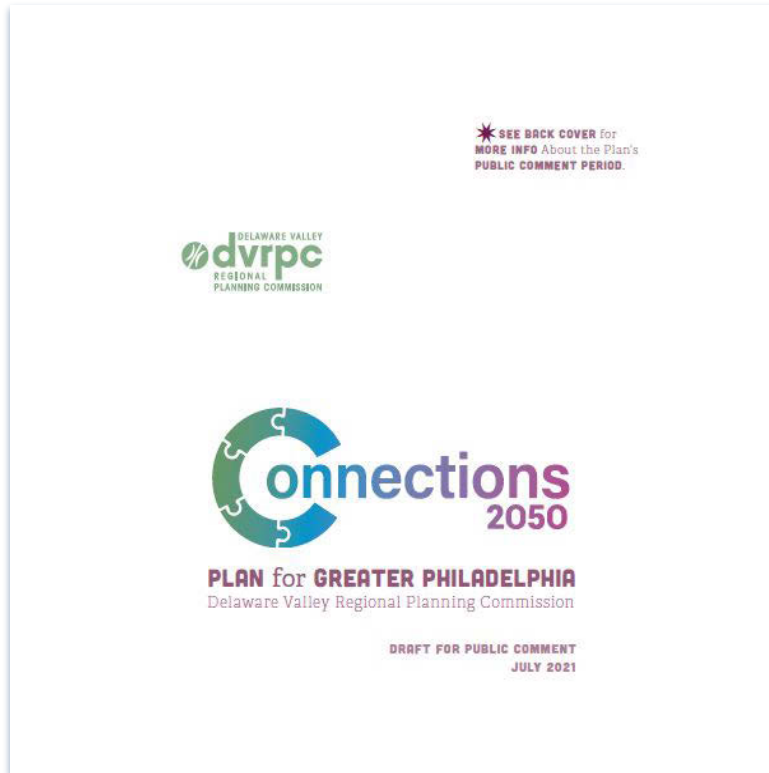
DVRPC Board | July 2021



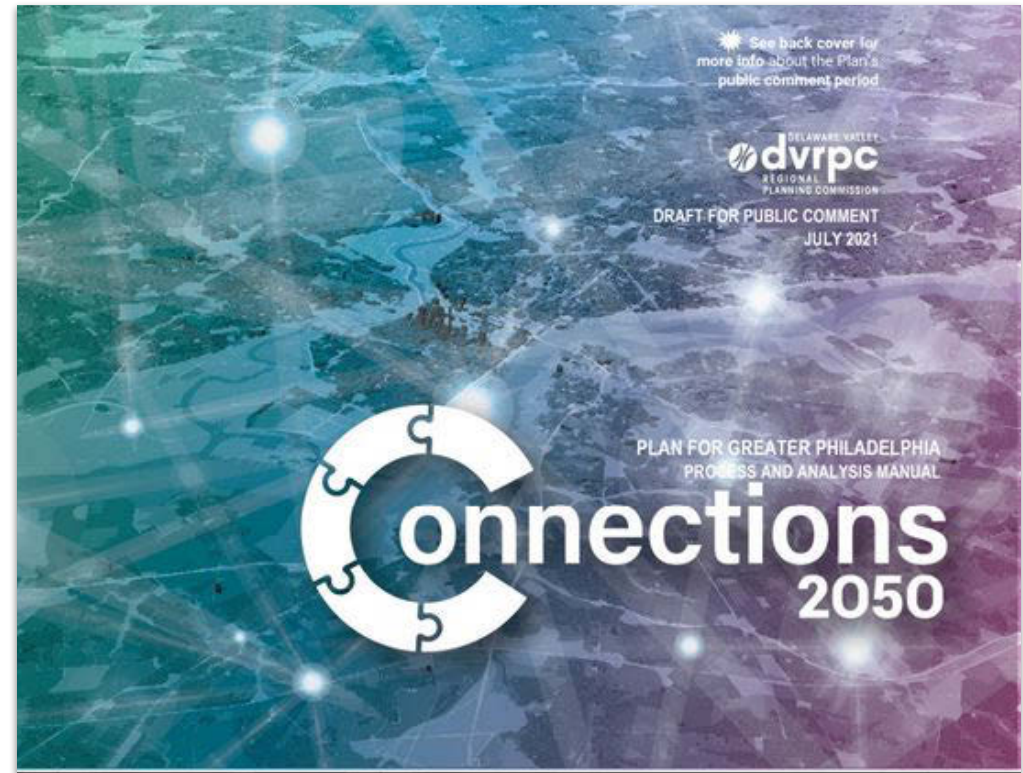
2050 Plan Development



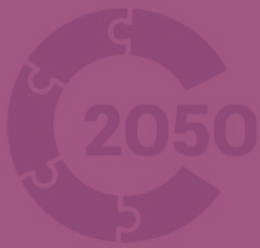
Introducing...



Policy Manual



Process & Analysis Manual



VISIONING – What We Heard

“Seamless automated private and public transport to provide access from anywhere to anywhere, to both reduce GHG emissions and to improve access to jobs and work for people in underserved neighborhoods.”

“Legalization of multi-family housing in all areas of the region.”

“An economy that has a goal of making society better, not individuals wealthier.”

“A welcoming community where people from a variety of backgrounds and with a variety of belief systems can live in harmony with mutual respect in an environmentally and economically sustainable way.”

“Black women have [the] same quality access to jobs, housing, healthcare, and education as white men.”

“greater investment in transit and open space.”

All quotes on this page come directly from participants in the Plan's visioning outreach.



VISION for 2050

The *Connections 2050* vision is: An **EQUITABLE, RESILIENT,** and **SUSTAINABLE** Greater Philadelphia region that:

Preserves and protects the natural **ENVIRONMENT.**

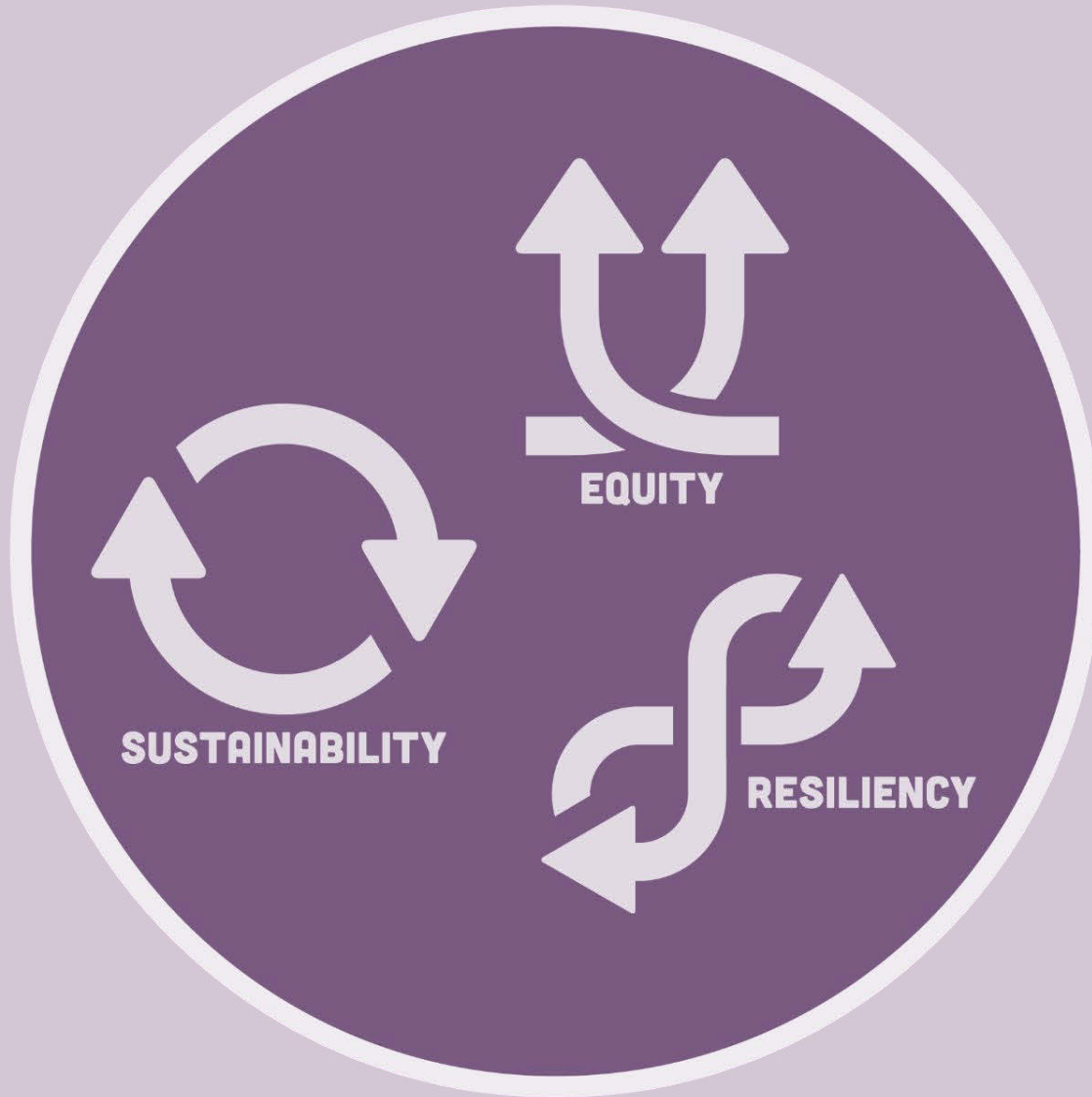
Develops inclusive, healthy, and walkable **COMMUNITIES.**

Grows an innovative **ECONOMY** with broadly shared prosperity.

Maintains a safe, multimodal **TRANSPORTATION NETWORK** that serves everyone and expands access to opportunity.



Plan **PRINCIPLES**





PRESERVE & PROTECT the **NATURAL ENVIRONMENT**



Protect Open Space



Net Zero Carbon



Design with Nature



Local Food Production



Clean Air & Water



DEVELOP INCLUSIVE, HEALTHY, & WALKABLE COMMUNITIES



Affordable Housing



Integrated Communities



Schools & Amenities



Vibrant Centers



Historic Preservation



MAINTAIN a **SAFE, MULTIMODAL TRANSPORTATION NETWORK** that **SERVES EVERYONE** and Expands **ACCESS** to **OPPORTUNITY**



Modernize Infrastructure



Vision Zero



Integrate Modes



Mobility & Reliability



(Cyber)Security



GROW an **INNOVATIVE ECONOMY** with Broadly **SHARED PROSPERITY**



Workforce Skills



Green Economy



Small Business



Global Connections



Reduce Poverty



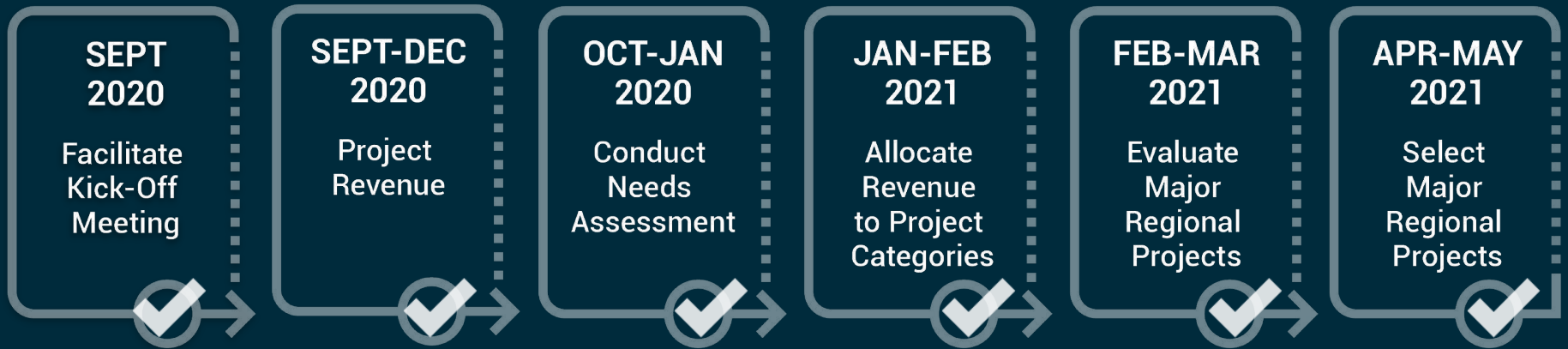
Key Strategies

EQUITY — RESILIENCY — SUSTAINABILITY

<p>Strategies →</p> <p>ENVIRONMENT</p> <p>Goals →</p>	<p>1 Preserve Open Space and Focus Growth in Centers</p>	<p>2 Reduce Greenhouse Gas Emissions and Improve Air Quality</p>	<p>3 Expand Nature in the Built Environment, Improve Water Quality, and Adapt to Climate Change</p>
<p>Strategies →</p> <p>COMMUNITIES</p> <p>Goals →</p>	<p>4 Uplift Every Voice to Build Inclusive Communities that Develop Without Displacement</p>	<p>5 Design New and Celebrate Historic High-Quality, Walkable, Neighborhoods</p>	<p>6 Increase the Supply and Variety of Affordable Housing Options and Support an Aging Population</p>
<p>Strategies →</p> <p>TRANSPORTATION</p> <p>Goals →</p>	<p>7 Maintain Existing Infrastructure and Facilitate the Equitable Deployment of New Transportation Modes and Technologies</p>	<p>8 Safely Accommodate Transit, Walking, and Biking, and Transportation Network Users of All Abilities</p>	<p>9 Promote Equitable Access to Opportunity</p>
<p>Strategies →</p> <p>ECONOMY</p> <p>Goals →</p>	<p>10 Bolster Connections to the Global Economy and Access to Communications Technologies</p>	<p>11 Expand Key Economic Sectors</p>	<p>12 Support Small Businesses, Entrepreneurship, and Lifelong Learning</p>
<p>Strategies →</p> <p>REGIONAL PLANNING</p> <p>Goals →</p>	<p>13 Be Prepared to Adapt to a Range of Plausible Futures</p> <p>ALL GOALS</p>	<p>14 Decision-making that Supports the Regional Vision</p> <p>ALL GOALS</p>	<p>15 Take Individual & Municipal Actions</p> <p>ALL GOALS</p>

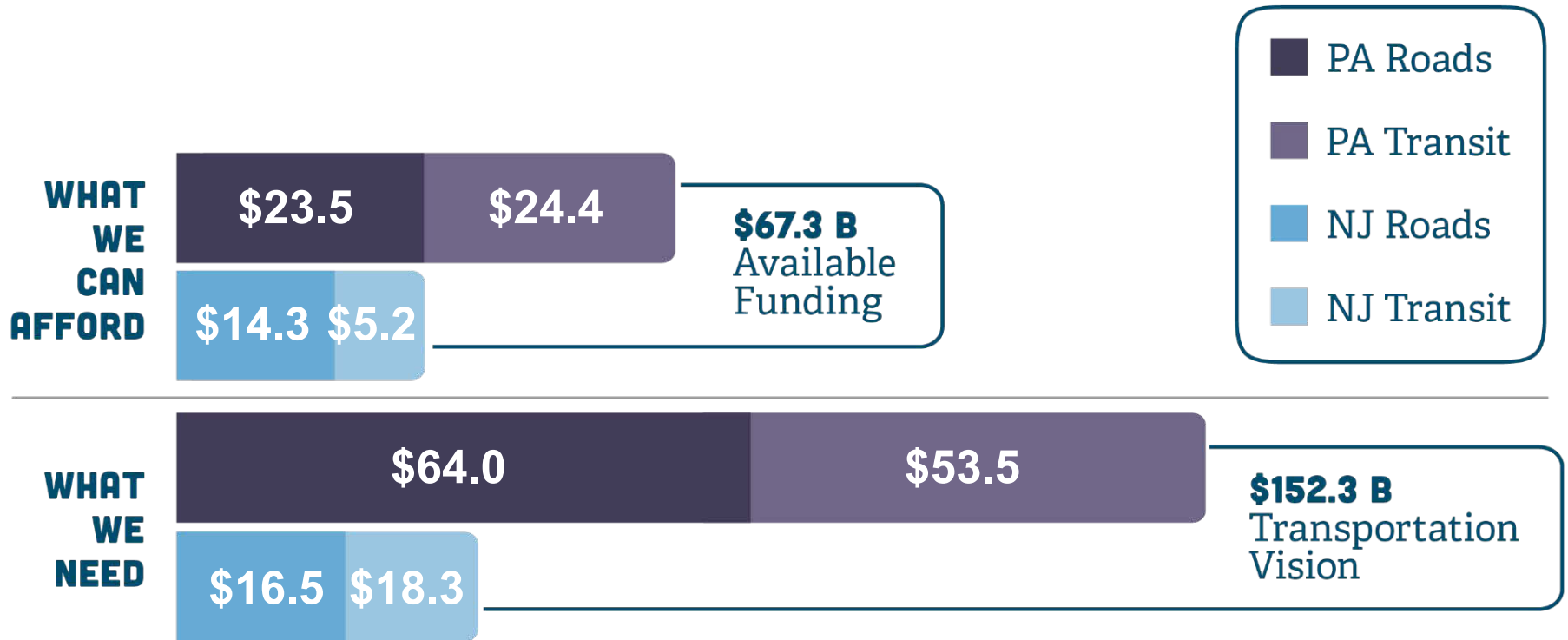


2050 Financial Plan





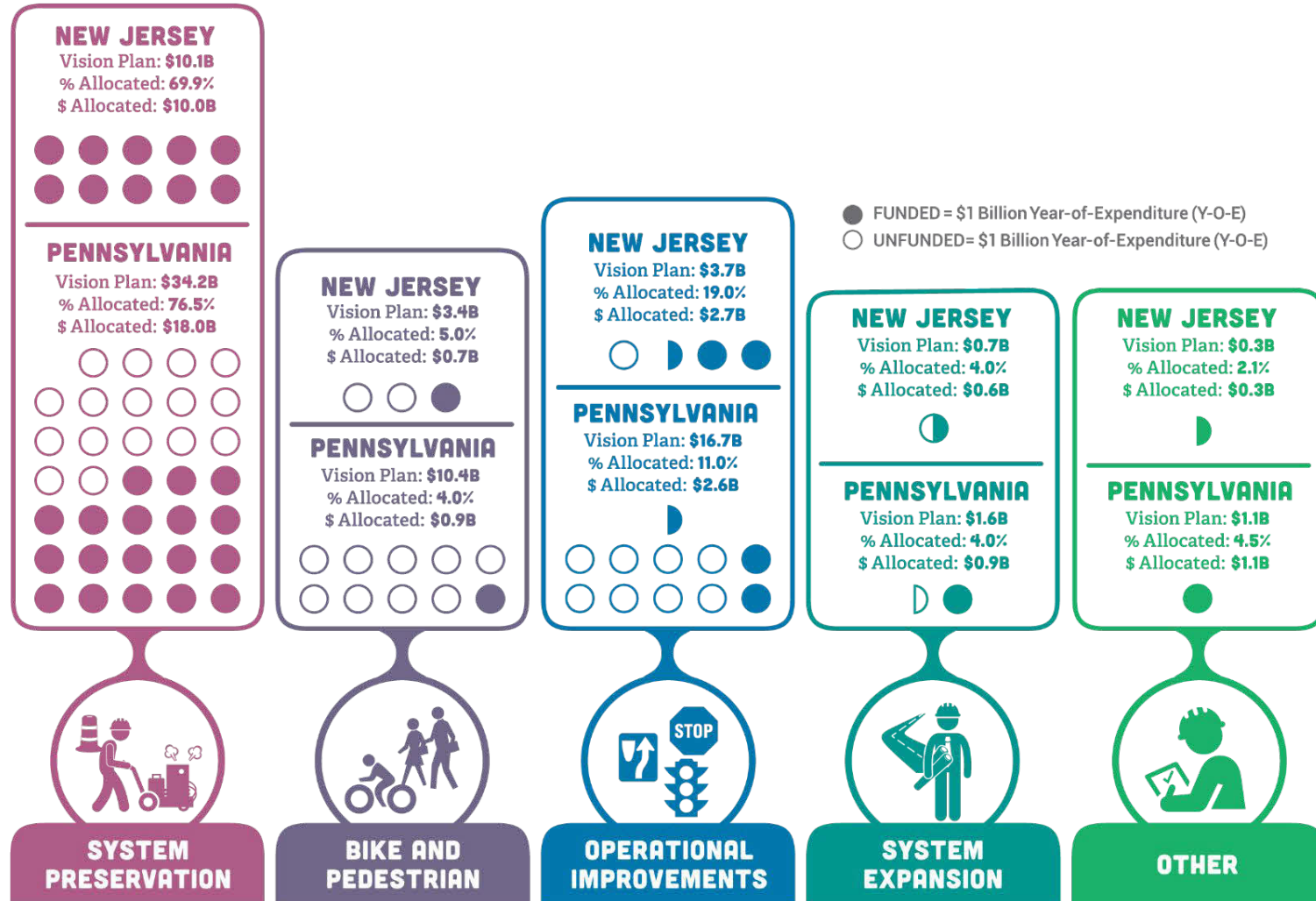
Regional Transportation Vision Compared to Available Funding



In billions of year-of-expenditure \$s

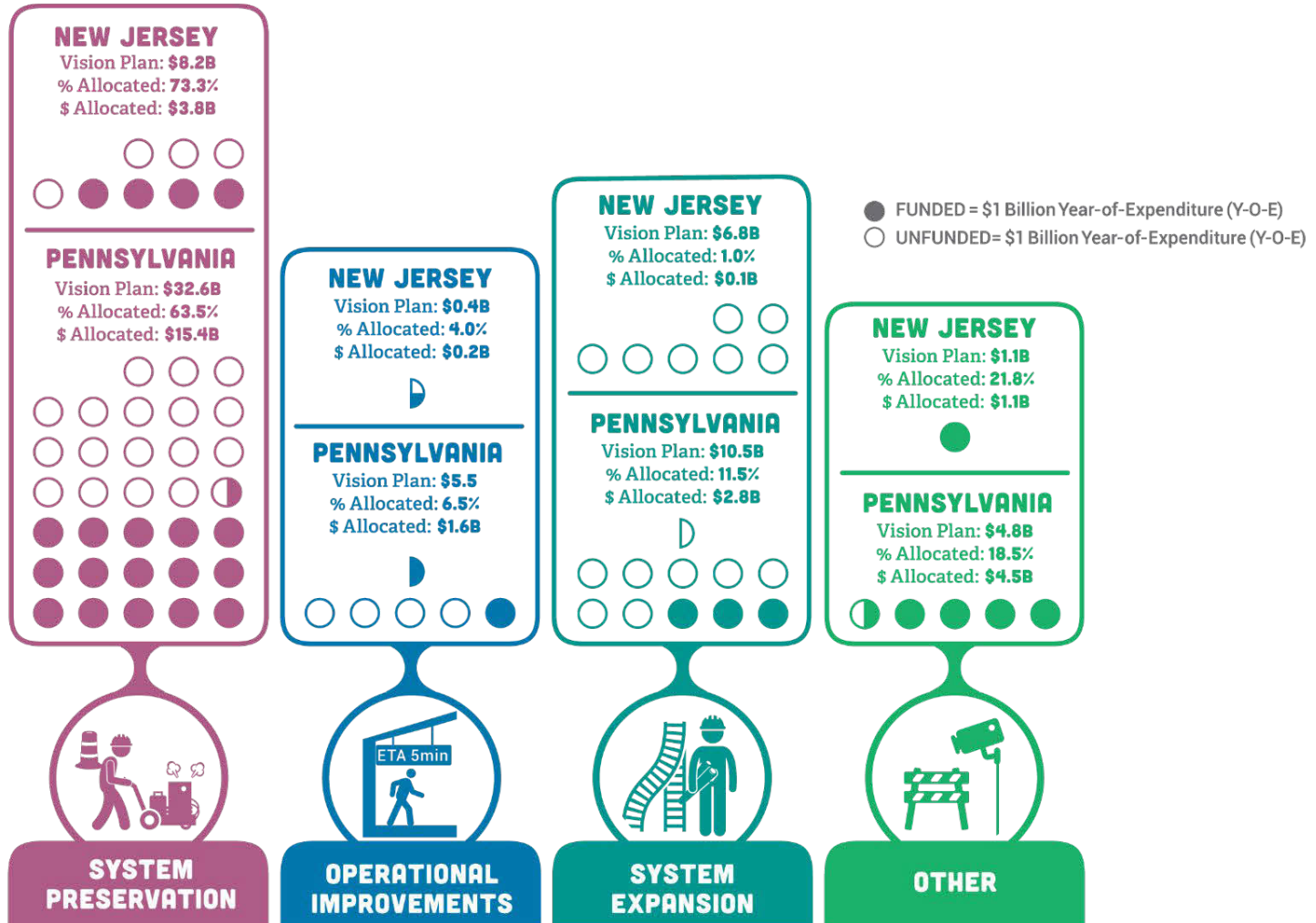


Allocating Roadway Funds by Project Category





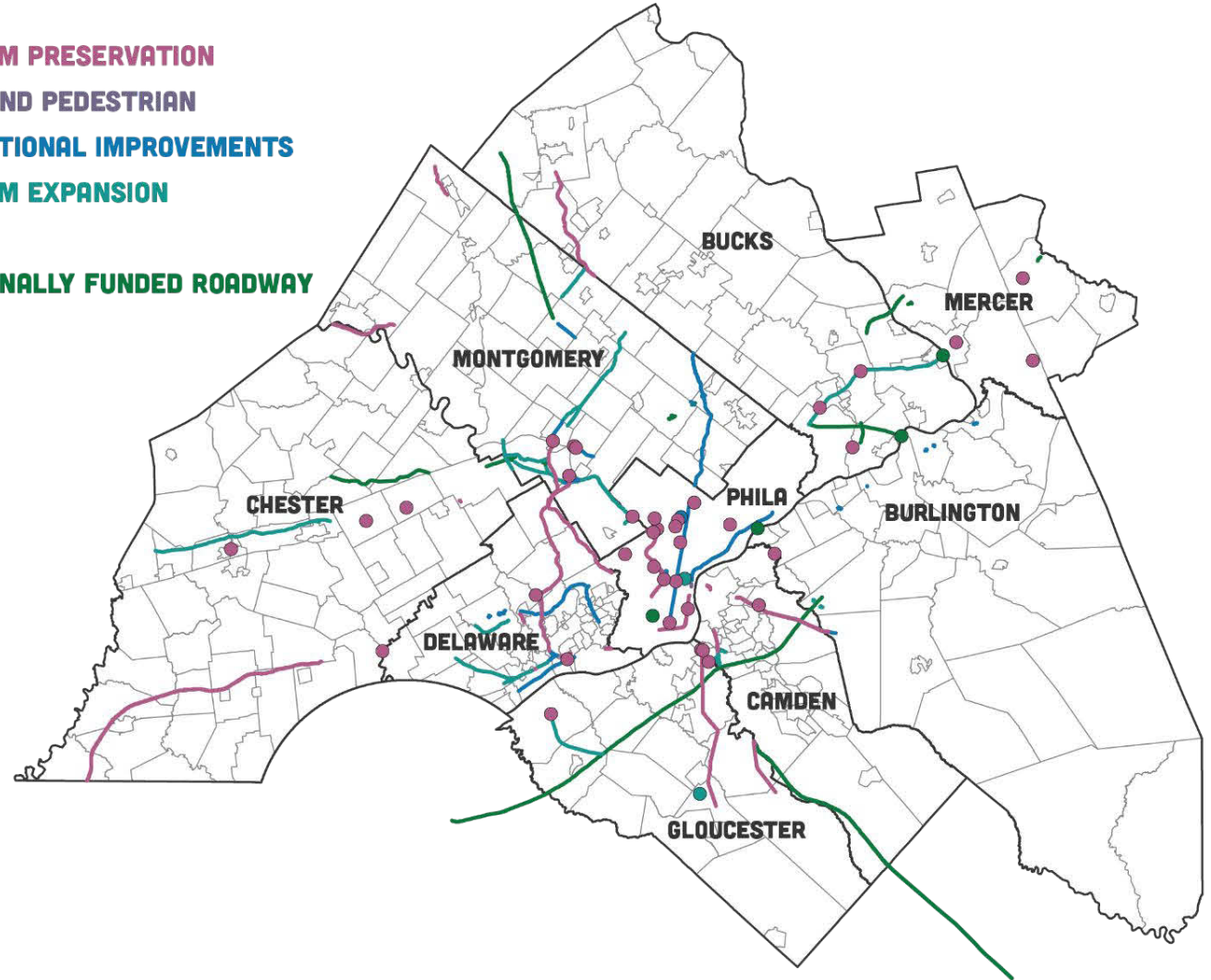
Allocating Transit Funds by Project Category





2050 Major Regional Projects

- SYSTEM PRESERVATION
- BIKE AND PEDESTRIAN
- OPERATIONAL IMPROVEMENTS
- SYSTEM EXPANSION
- OTHER
- EXTERNALLY FUNDED ROADWAY





Thank You!

Brett Fusco

bfusco@dvrpc.org



CONNECT WITH US
www.dvrpc.org

